

T34S, R7W, 6th P.M.

SGOMI

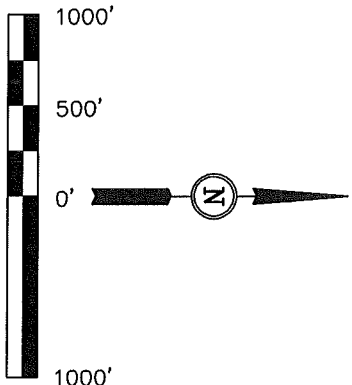
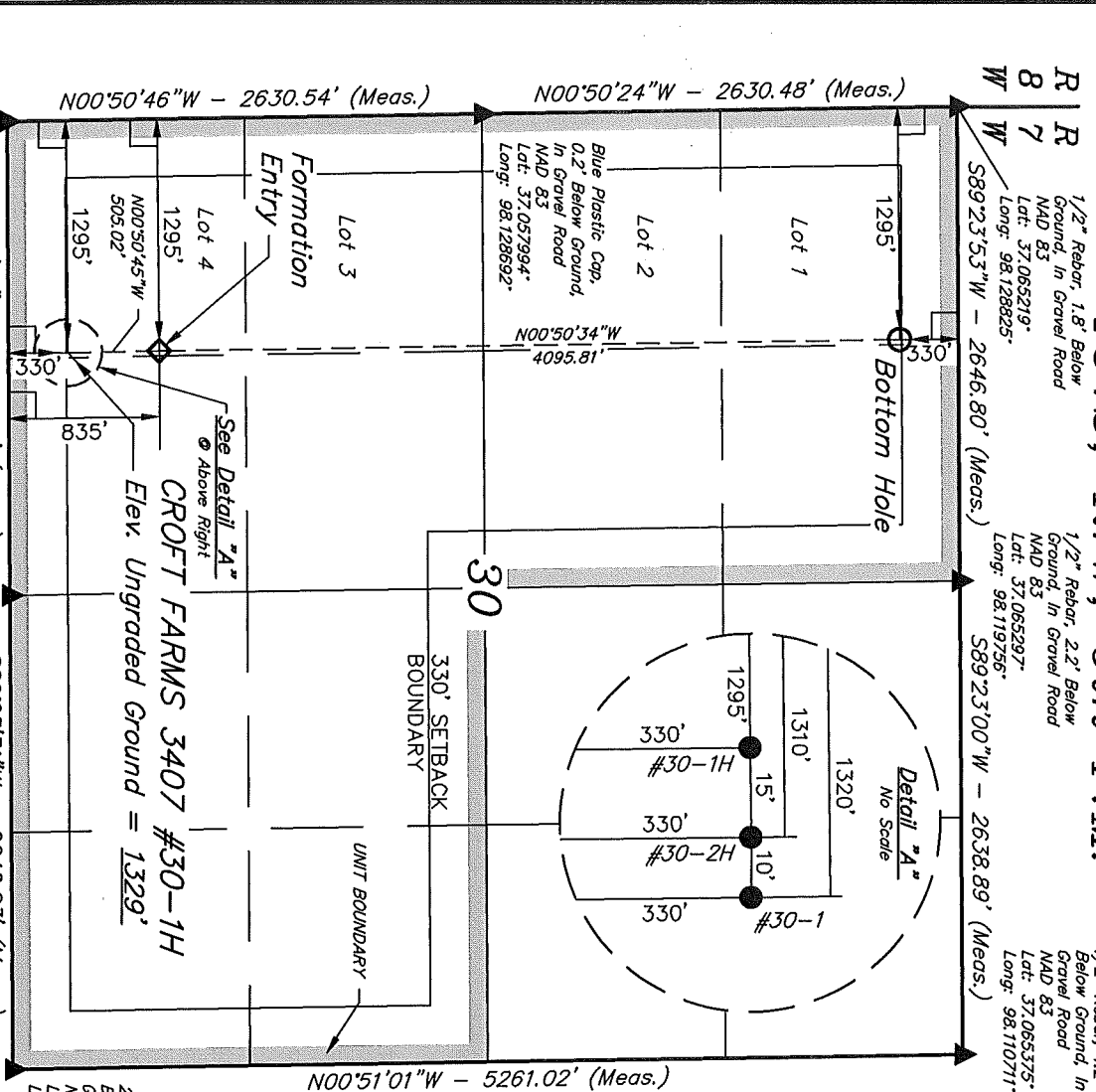
Well location, CROFT FARMS 3407 #30-1H, located as shown in the SW 1/4 SW 1/4 of Section 30, T34S, R7W, 6th P.M., Harper County, Kansas.

BASIS OF ELEVATION

SPOT ELEVATION LOCATED AT THE NORTHEAST CORNER OF SECTION 22, T33S, R7W, 6th P.M. TAKEN FROM THE ANTHONY, QUADRANGLE, KANSAS, HARPER COUNTY, 7.5 MINUTE QUAD (TOPOGRAPHIC MAP) PUBLISHED BY THE UNITED STATES DEPARTMENT OF THE INTERIOR, GEOLOGICAL SURVEY. SAID ELEVATION IS MARKED AS BEING 1348 FEET.

BASIS OF BEARINGS

BASIS OF BEARINGS IS A G.P.S. OBSERVATION.



CERTIFICATE
THIS IS TO CERTIFY THAT THE ABOVE PLAT IS A TRUE AND CORRECT COPY OF THE ORIGINAL SURVEY AND THAT THE SAME ARE IN ACCORDANCE WITH THE BEST OF MY KNOWLEDGE AND BELIEF.



UNITAH ENGINEERING & LAND SURVEYING
85 SOUTH 200 EAST - VERNAL, UTAH 84078
(435) 789-1017

SCALE	1" = 1000'	DATE SURVEYED:	01-20-12	DATE DRAWN:	01-23-12
PARTY	L.S. D.S. C.C.	REFERENCES	G.L.O. PLAT		
WEATHER	COLD	FILE	SGOMI		

NAD 83 (#30-1H TARGET BOTTOM HOLE)	NAD 83 (#30-1H FORMATION ENTRY)	NAD 83 (#30-2H SURFACE LOCATION)
LATITUDE = 370351.66" (37.064350)	LATITUDE = 370311.17" (37.053103)	LATITUDE = 370306.18" (37.051717)
LONGITUDE = 980727.74" (98.124372)	LONGITUDE = 980726.99" (98.124164)	LONGITUDE = 980726.89" (98.124136)
NAD 27 (#30-1H TARGET BOTTOM HOLE)	NAD 27 (#30-1H FORMATION ENTRY)	NAD 27 (#30-2H SURFACE LOCATION)
LATITUDE = 370351.58" (37.064328)	LATITUDE = 370311.08" (37.053078)	LATITUDE = 370306.09" (37.051692)
LONGITUDE = 980726.50" (98.124028)	LONGITUDE = 980725.75" (98.123819)	LONGITUDE = 980725.66" (98.123794)

LEGEND:

- = 90° SYMBOL
- = PROPOSED WELL HEAD
- ▲ = SECTION CORNERS LOCATED.