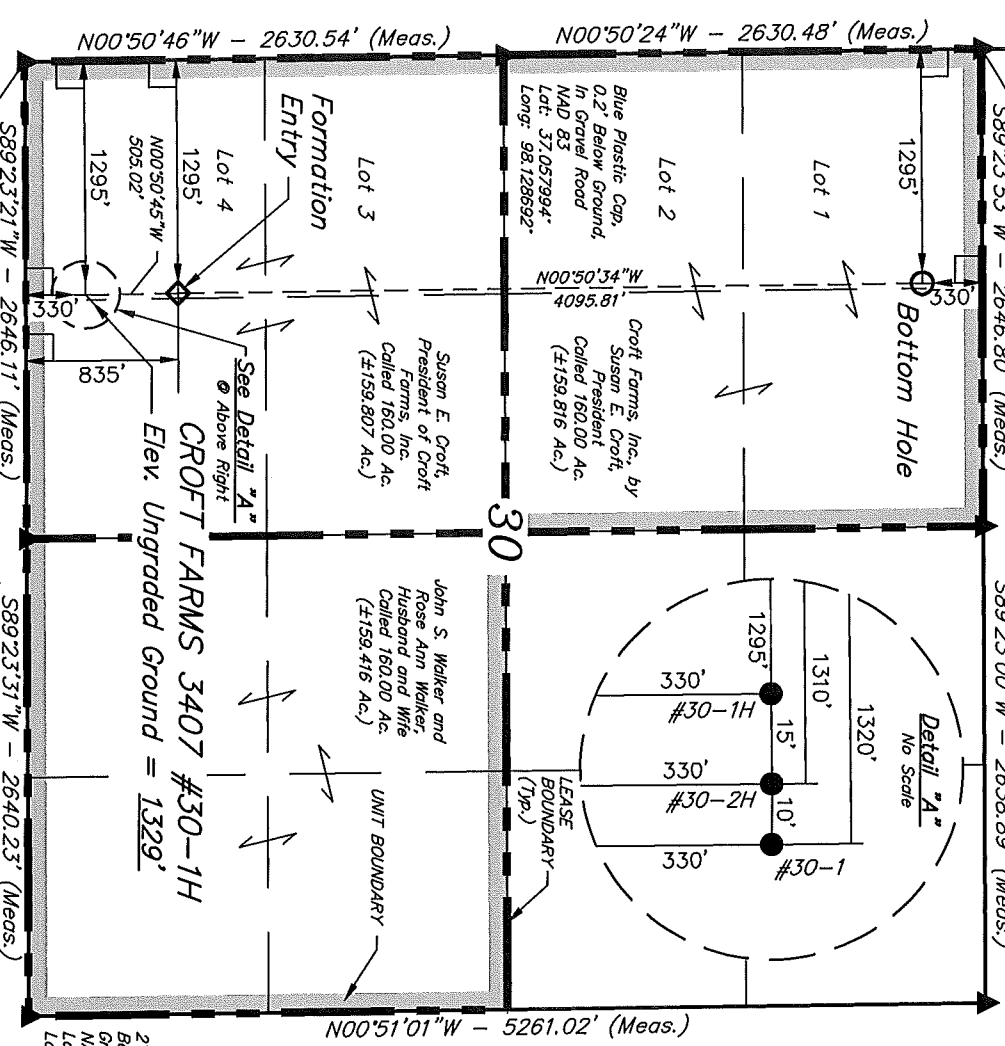


T34S, R7W, 6th P.M.

1/2" Rebar, 1.8' Below Ground, In Gravel Road  
 NAD 83  
 Lat: 37.0652919°  
 Long: 98.128825°

1/2" Rebar, 2.2' Below Ground, In Gravel Road  
 NAD 83  
 Lat: 37.065297°  
 Long: 98.119756°

1/2" Rebar, 1.2' Below Ground, In Gravel Road  
 NAD 83  
 Lat: 37.0653375°  
 Long: 98.110711°



NAD 83 (#30-1H TARGET BOTTOM HOLE)	NAD 83 (#30-1H FORMATION ENTRY)	NAD 83 (#30-2H SURFACE LOCATION)
LATITUDE = 37.035166° (37.064350)	LATITUDE = 37.031117° (37.053103)	LATITUDE = 37.030618° (37.051717)
LONGITUDE = 98.072724° (98.124372)	LONGITUDE = 98.072699° (98.124164)	LONGITUDE = 98.072689° (98.124136)
NAD 27 (#30-1H TARGET BOTTOM HOLE)	NAD 27 (#30-1H FORMATION ENTRY)	NAD 27 (#30-2H SURFACE LOCATION)
LATITUDE = 37.035158° (37.064328)	LATITUDE = 37.031108° (37.053078)	LATITUDE = 37.030609° (37.051692)
LONGITUDE = 98.072650° (98.124028)	LONGITUDE = 98.072575° (98.123819)	LONGITUDE = 98.072566° (98.123794)

LEGEND:

- = 90° SYMBOL
- = PROPOSED WELL HEAD.
- ▲ = SECTION CORNERS LOCATED.

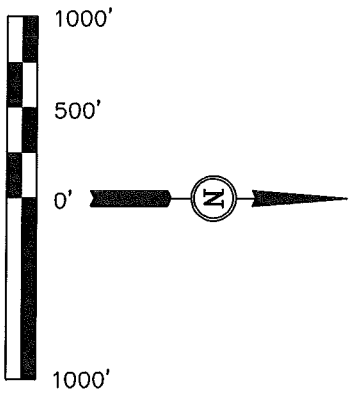
SGOMI

**UNIT BOUNDARY PLAT**

(For CROFT FARMS 3407 #30-1H)

Located In  
 Section 30, T34S, R7W, 6th P.M.  
 Harper County, Kansas

BASIS OF BEARINGS  
 BASIS OF BEARINGS IS A G.P.S. OBSERVATION.  
 CROFT FARMS 3407 #30-1H UNIT  
 Called 480.00 Acres



CERTIFICATE

THIS IS TO CERTIFY THAT THE ABOVE PLAT IS A TRUE AND CORRECT COPY OF THE ORIGINAL SURVEY RECORDS AND THAT THE SAME ARE IN ACCORDANCE WITH THE BEST OF MY KNOWLEDGE AND BELIEF.



UNTAH ENGINEERING & LAND SURVEYING

85 SOUTH 200 EAST - VERNAL, UTAH 84078

(435) 789-1017

SCALE	1" = 1000'	DATE SURVEYED:	01-20-12	DATE DRAWN:	02-09-12
PARTY	L.S. D.S. C.C.	REFERENCES	G.L.O. PLAT		
WEATHER	COLD	FILE	SGOMI		