

T34S, R7W, 6th P.M.

SGOMI

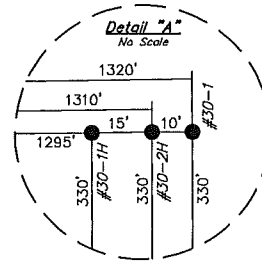
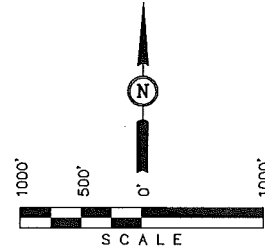
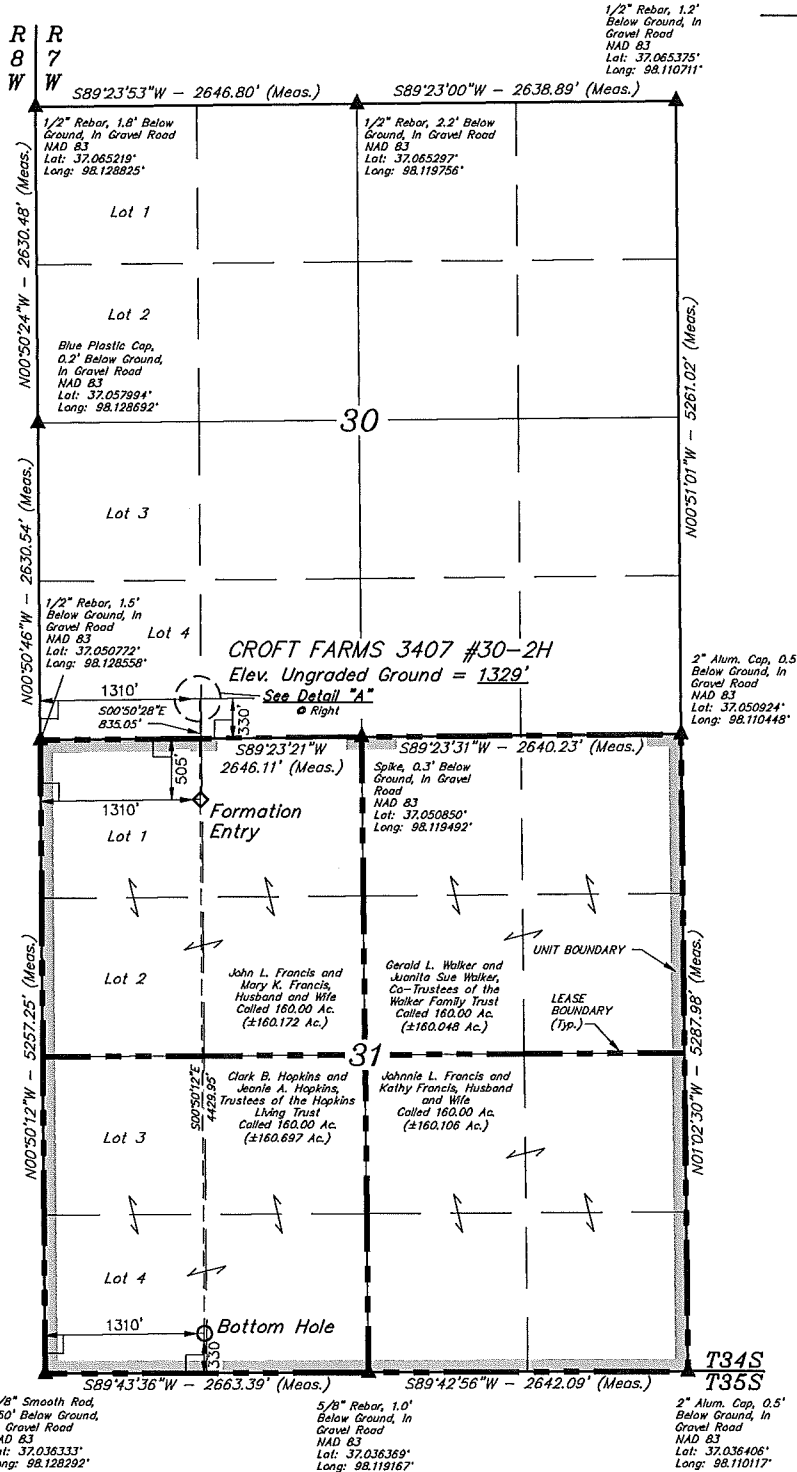
UNIT BOUNDARY PLAT
(For CROFT FARMS 3407 #30-2H)

Located In
Section 31, T34S, R7W, 6th P.M.
Harper County, Kansas

BASIS OF BEARINGS

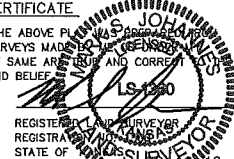
BASIS OF BEARINGS IS A G.P.S. OBSERVATION.

CROFT FARMS 3407 #30-2H UNIT
Called 640.00 Acres



CERTIFICATE

THIS IS TO CERTIFY THAT THE ABOVE PLAT IS A TRUE AND CORRECT REPRESENTATION OF THE FIELD NOTES OF ACTUAL SURVEYS MADE BY ME UNDER THE SUPERVISION AND THAT THE SAME ARE TRUE AND CORRECT TO THE BEST OF MY KNOWLEDGE AND BELIEF.



LEGEND:

- └ = 90° SYMBOL
- = PROPOSED WELL HEAD.
- ▲ = SECTION CORNERS LOCATED.

UINTAH ENGINEERING & LAND SURVEYING		
85 SOUTH 200 EAST - VERNAL, UTAH 84078		
(435) 789-1017		
SCALE 1" = 1000'	DATE SURVEYED: 01-20-12	DATE DRAWN: 02-09-12
PARTY L.S. D.S. C.C.	REFERENCES G.I.O. PLAT	
WEATHER COLD	FILE SGOMI	

NAD 83 (#30-2H TARGET BOTTOM HOLE) LATITUDE = 37°02'14.13" (37.037258) LONGITUDE = 98°07'25.75" (98.123819)	NAD 83 (#30-2H FORMATION ENTRY) LATITUDE = 37°02'57.93" (37.049425) LONGITUDE = 98°07'26.56" (98.124044)	NAD 83 (#30-1H SURFACE LOCATION) LATITUDE = 37°03'06.18" (37.051717) LONGITUDE = 98°07'26.71" (98.124086)
NAD 27 (#30-2H TARGET BOTTOM HOLE) LATITUDE = 37°02'14.04" (37.037233) LONGITUDE = 98°07'24.52" (98.123478)	NAD 27 (#30-2H FORMATION ENTRY) LATITUDE = 37°02'57.84" (37.049400) LONGITUDE = 98°07'25.32" (98.123700)	NAD 27 (#30-1H SURFACE LOCATION) LATITUDE = 37°03'06.09" (37.051692) LONGITUDE = 98°07'25.48" (98.123744)