

T34S, R7W, 6th P.M.

SGOMI

Well location, DAVIS 3407 #27-2H, located as shown on the Line Between the SE 1/4 SW 1/4 of Section 27 and the NE 1/4 NW 1/4 of section 34, T34S, R7W, 6th P.M., Harper County, Kansas.

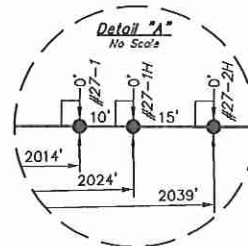
BASIS OF ELEVATION

SPOT ELEVATION LOCATED AT THE NORTHEAST CORNER OF SECTION 22, T33S, R7W, 6th P.M. TAKEN FROM THE ANTHONY, QUADRANGLE, KANSAS, HARPER COUNTY, 7.5 MINUTE QUAD (TOPOGRAPHIC MAP) PUBLISHED BY THE UNITED STATES DEPARTMENT OF THE INTERIOR, GEOLOGICAL SURVEY. SAID ELEVATION IS MARKED AS BEING 1348 FEET.

BASIS OF BEARINGS

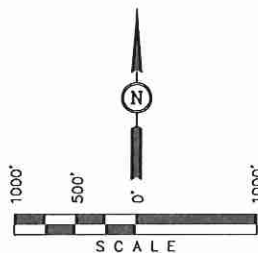
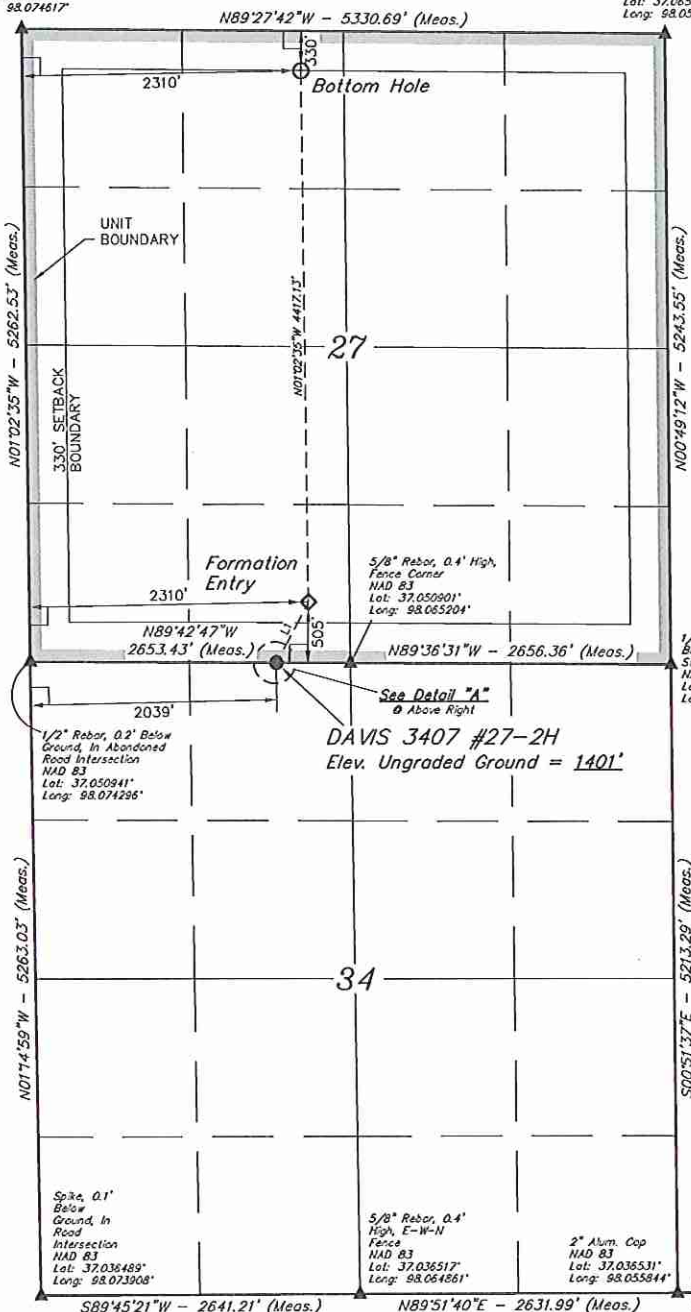
BASIS OF BEARINGS IS A G.P.S. OBSERVATION.

LINE TABLE		
LINE	BEARING	LENGTH
L1	N27°25'05"E	567.49'



PK No7
NAD 83
Lot: 37.065392°
Long: 98.074617°

Rebar
NAD 83
Lot: 37.065392°
Long: 98.056347°



CERTIFICATE

THIS IS TO CERTIFY THAT THE ABOVE PLAT WAS PREPARED FROM FIELD NOTES OF ACTUAL SURVEYS MADE BY ME OR UNDER MY SUPERVISION AND THAT THE SAME ARE TRUE AND CORRECT TO THE BEST OF MY KNOWLEDGE AND BELIEF.

REGISTERED LAND SURVEYOR
 REGISTRATION NO. 12345
 STATE OF KANSAS

LEGEND:

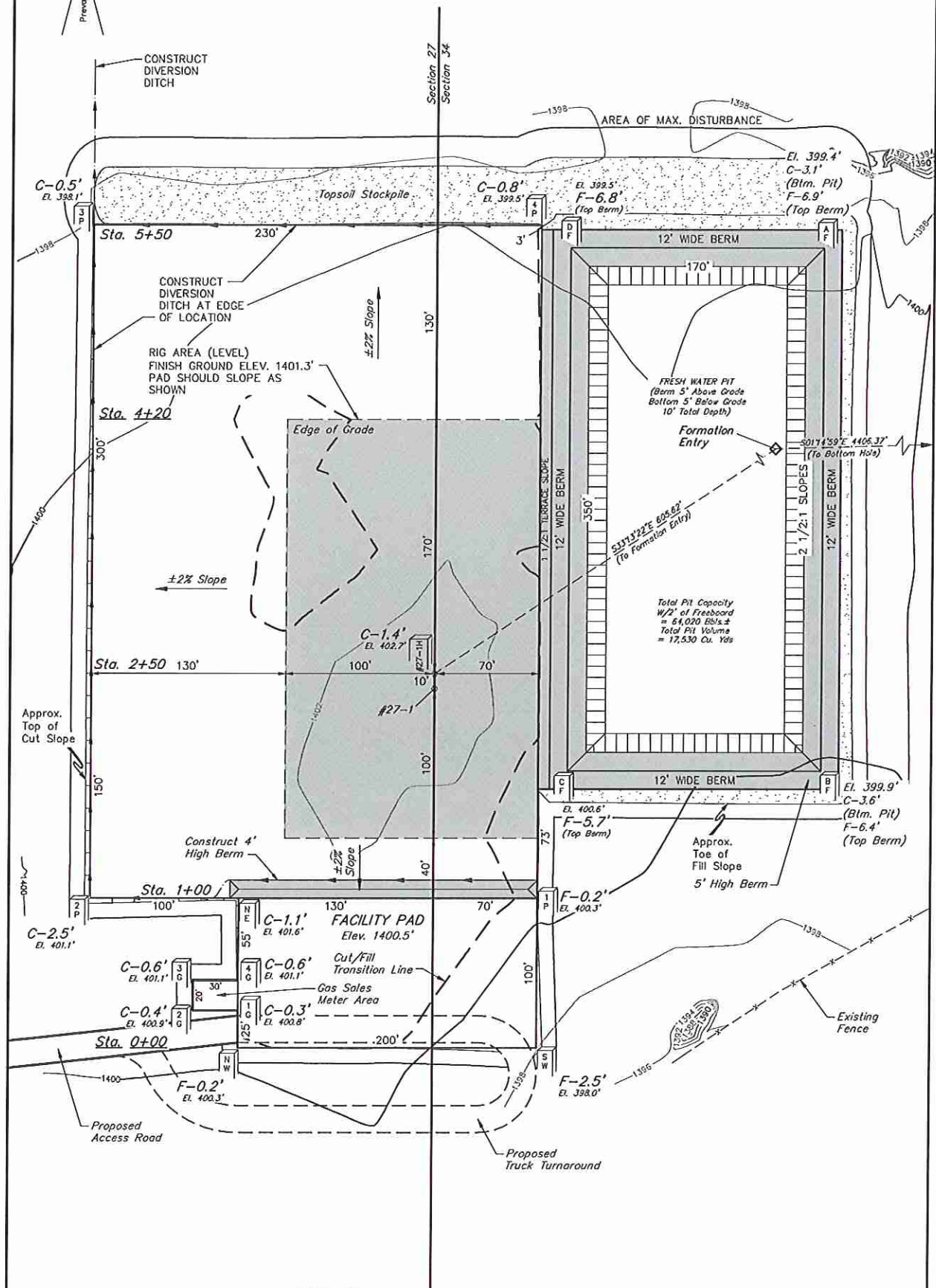
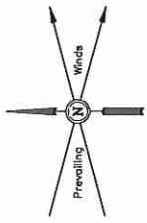
- └─ = 90° SYMBOL
- = PROPOSED WELL HEAD.
- ▲ = SECTION CORNERS LOCATED.

NAD 83 (#27-2H TARGET BOTTOM HOLE)	NAD 83 (#27-2H FORMATION ENTRY)	NAD 83 (#27-2H SURFACE LOCATION)
LATITUDE = 37°03'51.92" (37.064422)	LATITUDE = 37°03'08.26" (37.052234)	LATITUDE = 37°03'03.28" (37.050911)
LONGITUDE = 98°04'00.04" (98.066678)	LONGITUDE = 98°03'59.07" (98.066408)	LONGITUDE = 98°04'02.30" (98.067306)
NAD 27 (#27-2H TARGET BOTTOM HOLE)	NAD 27 (#27-2H FORMATION ENTRY)	NAD 27 (#27-2H SURFACE LOCATION)
LATITUDE = 37°03'51.84" (37.064400)	LATITUDE = 37°03'08.17" (37.052269)	LATITUDE = 37°03'03.19" (37.050886)
LONGITUDE = 98°03'58.81" (98.066336)	LONGITUDE = 98°03'57.85" (98.066069)	LONGITUDE = 98°04'01.07" (98.066984)

UNTAH ENGINEERING & LAND SURVEYING		
85 SOUTH 200 EAST - VERNAL, UTAH 84078		
(435) 789-1017		
SCALE 1" = 1000'	DATE SURVEYED: 11-05-11	DATE DRAWN: 02-16-12
PARTY L.S. K.H. C.C.	REFERENCES G.L.O. PLAT	
WEATHER COOL	FILE SGOMI	

SGOMI
LOCATION LAYOUT FOR
DAVIS 3407 #27-1 & #27-1H
ON THE LINE BETWEEN THE SE 1/4 SW 1/4
OF SECTION 27 AND THE NE 1/4 NW 1/4 OF
SECTION 34, T34S, R7W, 6TH P.M.

FIGURE #1
 SCALE: 1" = 60'
 DATE: 12-09-11
 DRAWN BY: C.C.



Elev. Ungraded Ground At #27-1H Loc. Stake = 1402.7'
 FINISHED GRADE ELEV. AT #27-1H LOC. STAKE = 1401.3'