

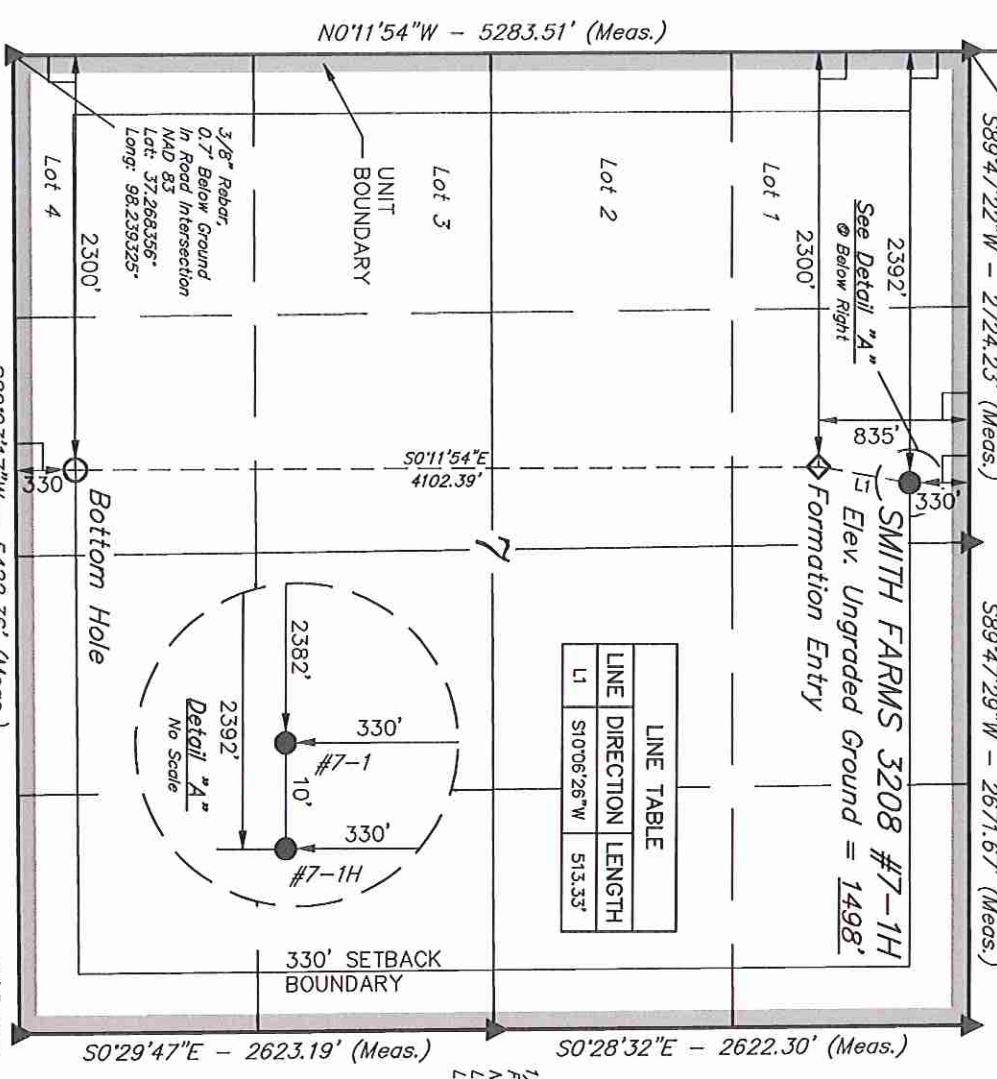
T32S, R8W, 6th P.M.

SGOMI

Concrete Remains, Spike, 0.8' Below Ground In Road Intersection
 NAD 83 Lat: 37.282867° Long: 98.239411°

3/4" Rebar, 0.4' Below Ground In Gravel Road
 NAD 83 Lat: 37.282903° Long: 98.230047°

Nail Flush With Road In Intersection
 NAD 83 Lat: 37.282939° Long: 98.220867°



POINT	COORDINATES	DESCRIPTION
D 83 (#7-1H TARGET BOTTOM HOLE)	NAD 83 (#7-1H FORMATION ENTRY)	NAD 83 (#7-1H SURFACE LOCATION)
Latitude = 37°16'09.61" (37.269336)	Latitude = 37°16'50.17" (37.280603)	Latitude = 37°16'55.17" (37.281992)
Longitude = 98°13'53.13" (98.231425)	Longitude = 98°13'53.37" (98.231492)	Longitude = 98°13'52.27" (98.231188)
D 27 (#7-1H TARGET BOTTOM HOLE)	NAD 27 (#7-1H FORMATION ENTRY)	NAD 27 (#7-1H SURFACE LOCATION)
Latitude = 37°16'09.54" (37.269317)	Latitude = 37°16'50.10" (37.280563)	Latitude = 37°16'55.10" (37.281972)
Longitude = 98°13'51.89" (98.231081)	Longitude = 98°13'52.13" (98.231147)	Longitude = 98°13'51.02" (98.230839)

LEGEND:

- = 90° SYMBOL
- = PROPOSED WELL HEAD. Long: 98.220692°
- ▲ = SECTION CORNERS LOCATED.

SCALE	1" = 1000'	DATE SURVEYED:	09-13-11	DATE DRAWN:	10-18-11
PARTY	L.S. K.H. C.C.	REFERENCES	G.L.O. PLAT		
WEATHER	WARM	FILE	SGOMI		

REVISIONS: 01-24-12 C.C.
 REVISED: 11-03-11 C.C.
 REVISED: 10-18-11 C.C.

UTAH ENGINEERING & LAND SURVEYING
 85 SOUTH 200 EAST - VERNAL, UTAH 84078
 (435) 789-1017

CERTIFICATE

THIS IS TO CERTIFY THAT THE ABOVE PLAT WAS PREPARED FROM FIELD NOTES OF ACTUAL SURVEYS MADE BY THE SURVEYOR UNDER MY SUPERVISION AND THAT THE SAME ARE TRUE AND CORRECT TO THE BEST OF MY KNOWLEDGE AND BELIEF.

REGISTERED LAND SURVEYOR
 STATE OF UTAH
 L.S. JOHNSON
 No. 112

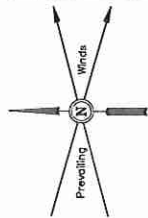
SPOT ELEVATION LOCATED AT THE NORTHEAST CORNER OF SECTION 22, T32S, R7W, 6th P.M. TAKEN FROM THE ANTHON QUADRANGLE, KANSAS, HARPER COUNTY, 7.5 MINUTE QUAD (TOPOGRAPHIC MAP) PUBLISHED BY THE UNITED STATES DEPARTMENT OF THE INTERIOR, GEOLOGICAL SURVEY. SAID ELEVATION IS MARKED AS BEING 1348 FEET.

BASIS OF BEARINGS

BASIS OF BEARINGS IS A G.P.S. OBSERVATION.

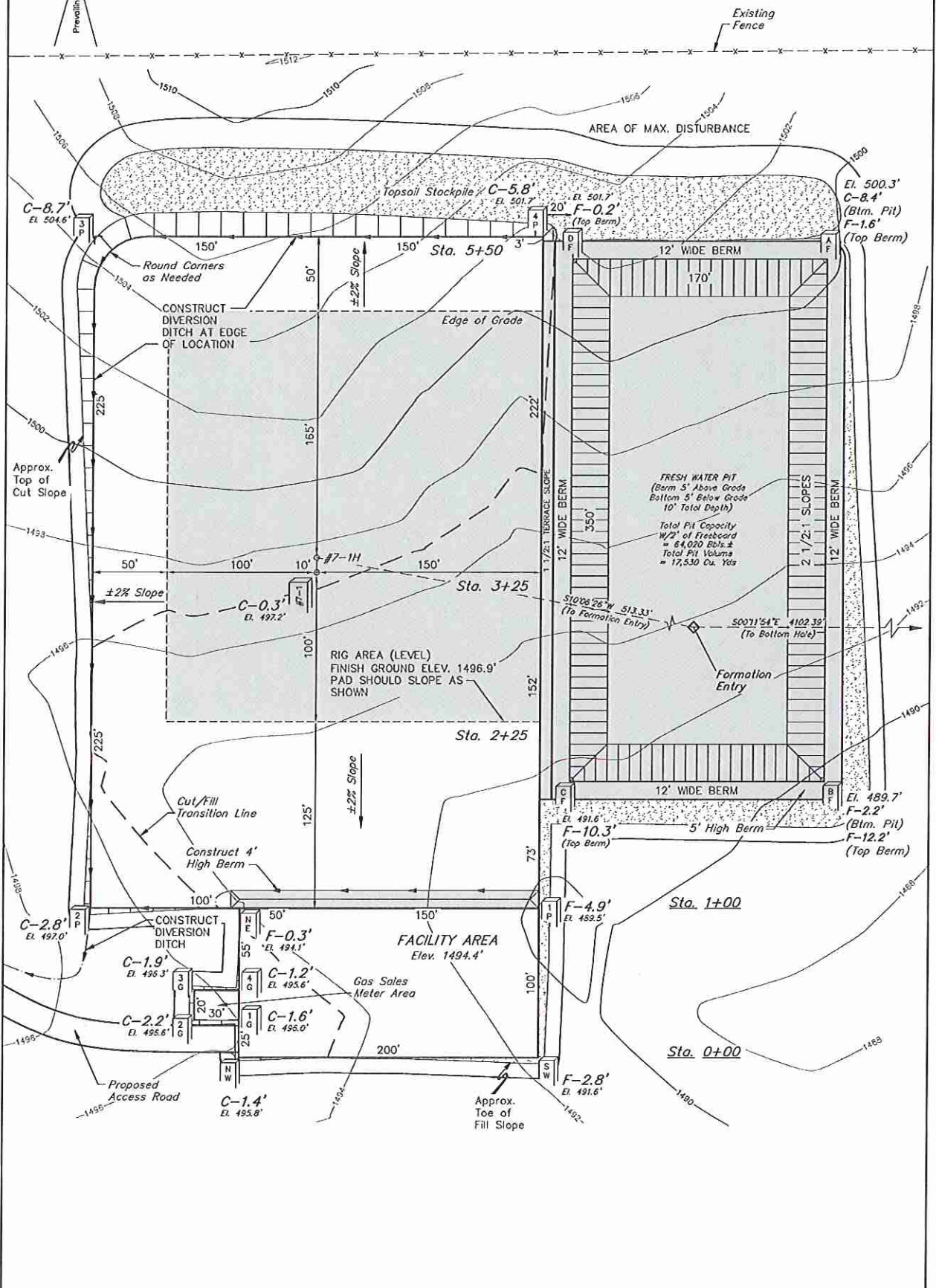
BASIS OF ELEVATION

Well location, SMITH FARMS 3208 #7-1H, located as shown in the NE 1/4 NW 1/4 of Section 7, T32S, R8W, 6th P.M., Harper County, Kansas.



SGOMI
LOCATION LAYOUT FOR
SMITH FARMS 3208 #7-1 & #7-1H
SECTION 7, T32S, R8W, 6th P.M.
NE 1/4 NW 1/4

FIGURE #1
 SCALE: 1" = 60'
 DATE: 01-30-12
 DRAWN BY: C.C.



Elev. Ungraded Ground At Loc. Stake = 1497.2'
 FINISHED GRADE ELEV. AT LOC. STAKE = 1496.9'