

T32S, R7W, 6th P.M.

SGOMI

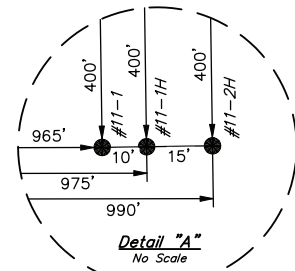
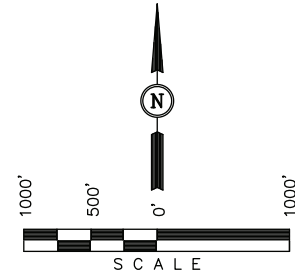
Well location, PARSONS TRUST 3207 #11-1H, located as shown in the NW 1/4 NW 1/4 of Section 11, T32S, R7W, 6th P.M., Harper County, Kansas.

BASIS OF ELEVATION

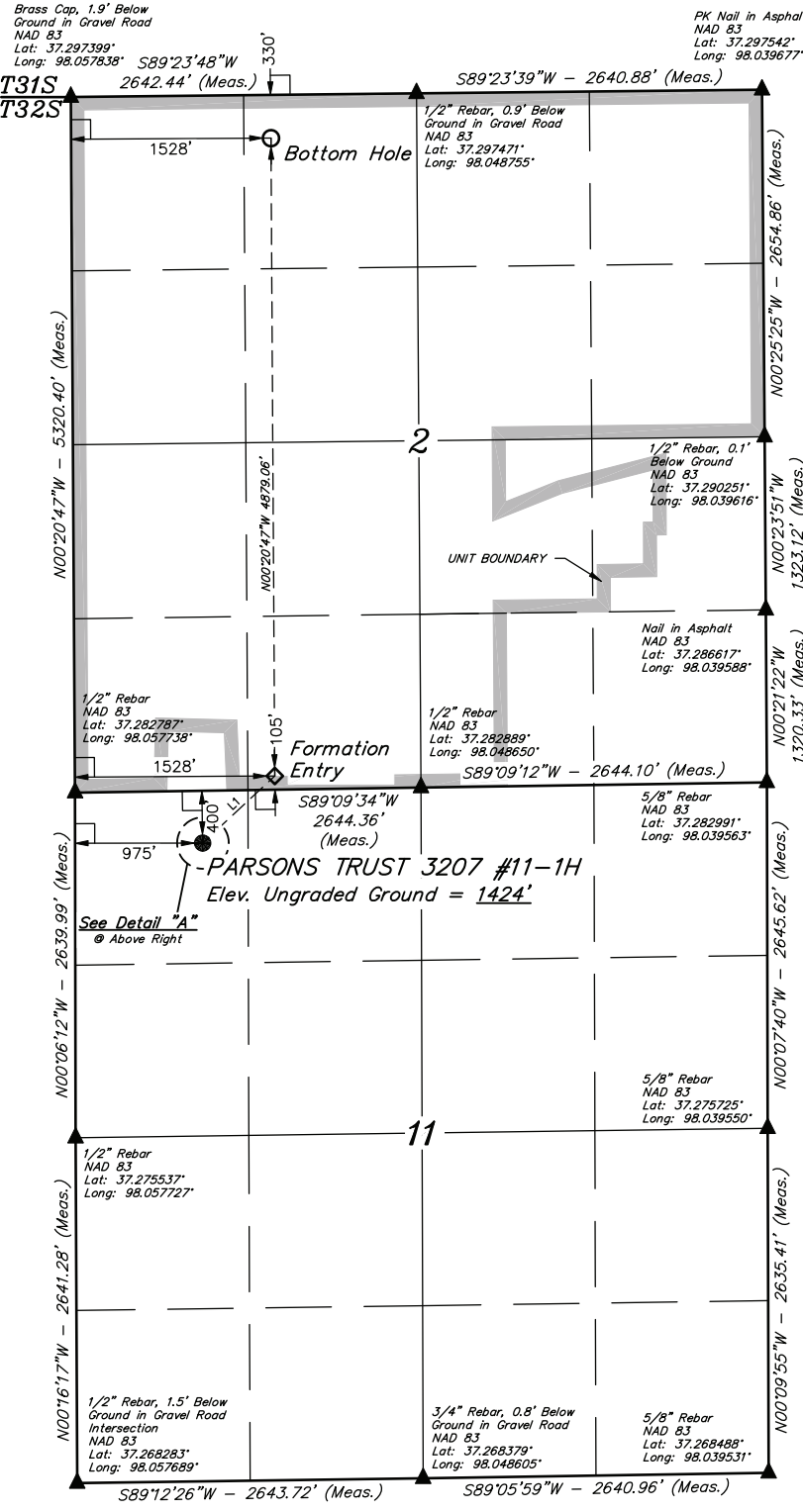
SPOT ELEVATION LOCATED AT THE NORTHEAST CORNER OF SECTION 22, T33S, R7W, 6th P.M. TAKEN FROM THE ANTHONY, QUADRANGLE, KANSAS, HARPER COUNTY, 7.5 MINUTE QUAD (TOPOGRAPHIC MAP) PUBLISHED BY THE UNITED STATES DEPARTMENT OF THE INTERIOR, GEOLOGICAL SURVEY. SAID ELEVATION IS MARKED AS BEING 1348 FEET.

BASIS OF BEARINGS

BASIS OF BEARINGS IS A G.P.S. OBSERVATION.



LINE TABLE		
LINE	BEARING	LENGTH
L1	N47°04'16"E	753.35'



CERTIFICATE

THIS IS TO CERTIFY THAT THE ABOVE PLAT WAS PREPARED FROM FIELD NOTES OF ACTUAL SURVEYS MADE BY ME OR UNDER MY SUPERVISION AND THAT THE SAME ARE TRUE AND CORRECT TO THE BEST OF MY KNOWLEDGE AND BELIEF.



LEGEND:

- └─┘ = 90° SYMBOL
- = PROPOSED WELL HEAD.
- ▲ = SECTION CORNERS LOCATED.

NAD 83 (#11-1H TARGET BOTTOM HOLE) LATITUDE = 37°17'47.52" (37.296534) LONGITUDE = 98°03'09.28" (98.052579)	NAD 83 (#11-1H FORMATION ENTRY) LATITUDE = 37°16'59.29" (37.283135) LONGITUDE = 98°03'08.96" (98.052489)	NAD 83 (#11-1H SURFACE LOCATION) LATITUDE = 37°16'54.21" (37.281726) LONGITUDE = 98°03'15.79" (98.054386)
NAD 27 (#11-1H TARGET BOTTOM HOLE) LATITUDE = 37°17'47.45" (37.296514) LONGITUDE = 98°03'08.06" (98.052239)	NAD 27 (#11-1H FORMATION ENTRY) LATITUDE = 37°16'59.21" (37.283114) LONGITUDE = 98°03'07.74" (98.052150)	NAD 27 (#11-1H SURFACE LOCATION) LATITUDE = 37°16'54.14" (37.281706) LONGITUDE = 98°03'14.57" (98.054047)

UINTAH ENGINEERING & LAND SURVEYING
 85 SOUTH 200 EAST - VERNAL, UTAH 84078
 (435) 789-1017

SCALE 1" = 1000'	DATE SURVEYED: 01-05-12	DATE DRAWN: 01-19-12
PARTY L.S. D.S. C.C.	REFERENCES G.L.O. PLAT	
WEATHER COLD	FILE SGOMI	

SGOMI

PRODUCTION FACILITY LAYOUT FOR

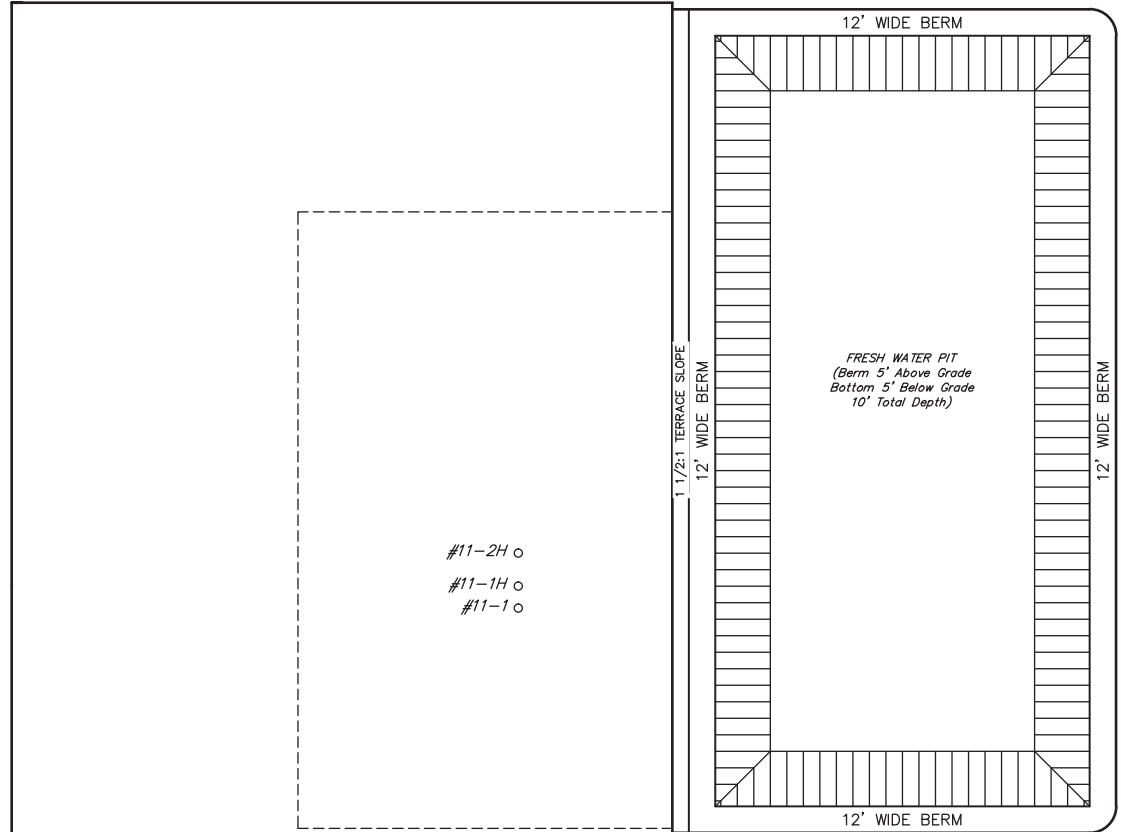
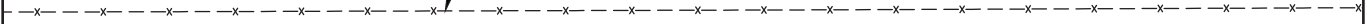
PARSONS TRUST 3207 #11-1, #11-1H & #11-2H
SECTION 11, T32S, R7W, 6th P.M.
NW 1/4 NW 1/4

FIGURE #3

SCALE: 1" = 60'
DATE: 02-01-12
DRAWN BY: C.C.



Existing Fence



#11-2H
#11-1H
#11-1

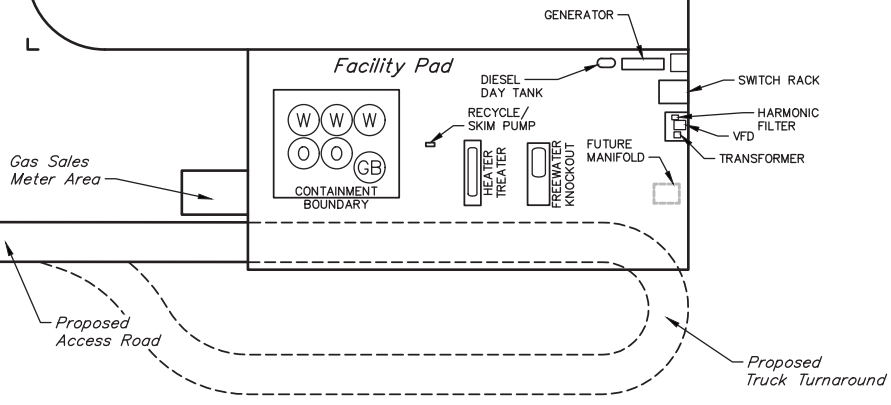
12' WIDE BERM

FRESH WATER PIT
(Berm 5' Above Grade
Bottom 5' Below Grade
10' Total Depth)

1 1/2:1 TERRACE SLOPE
12' WIDE BERM

12' WIDE BERM

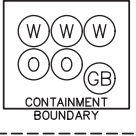
12' WIDE BERM



GENERATOR

Facility Pad

Gas Sales Meter Area



CONTAINMENT BOUNDARY

DIESEL DAY TANK

RECYCLE/SKIM PUMP

HEATER TREATER

FREEWATER KNOCKOUT

FUTURE MANIFOLD

SWITCH RACK

HARMONIC FILTER

VFD

TRANSFORMER

Proposed Access Road

Proposed Truck Turnaround