

# T32S, R7W, 6th P.M.

# SGOMI

Well location, PARSONS TRUST 3207 #11-2H, located as shown in the NW 1/4 NW 1/4 of Section 11, T32S, R7W, 6th P.M., Harper County, Kansas.

## BASIS OF ELEVATION

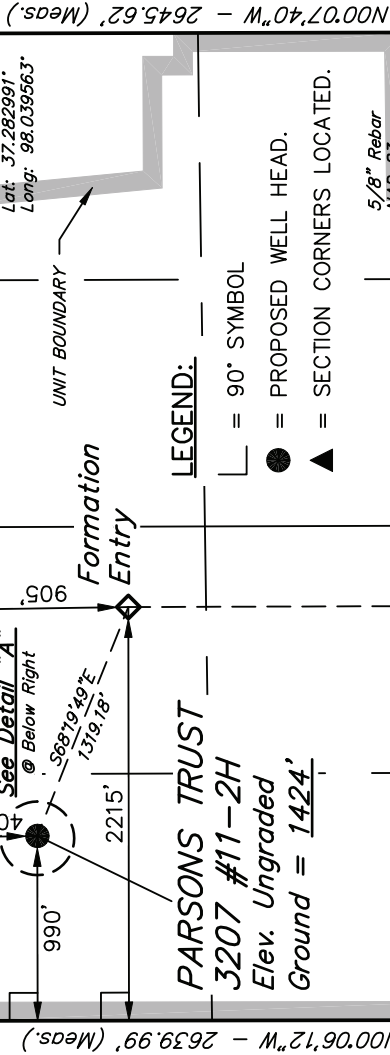
SPOT ELEVATION LOCATED AT THE NORTHEAST CORNER OF SECTION 22, T33S, R7W, 6th P.M. TAKEN FROM THE ANTHONY, QUADRANGLE, KANSAS, HARPER COUNTY, 7.5 MINUTE QUAD (TOPOGRAPHIC MAP) PUBLISHED BY THE UNITED STATES DEPARTMENT OF THE INTERIOR, GEOLOGICAL SURVEY. SAID ELEVATION IS MARKED AS BEING 1348 FEET.

## BASIS OF BEARINGS

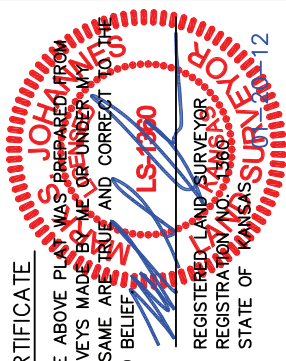
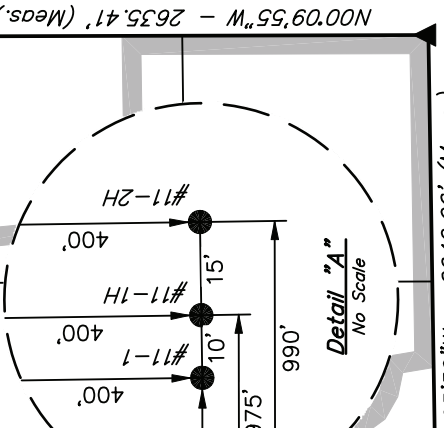
BASIS OF BEARINGS IS A G.P.S. OBSERVATION.

1/2" Rebar  
NAD 83  
Lat: 37.282787°  
Long: 98.057738°  
S89°09'34"W - 2644.36' (Meas.)

5/8" Rebar  
NAD 83  
Lat: 37.282991°  
Long: 98.039563°  
S89°09'12"W - 2644.10' (Meas.)



- LEGEND:**
- = 90° SYMBOL
  - = PROPOSED WELL HEAD.
  - ▲ = SECTION CORNERS LOCATED.



CERTIFICATE  
THIS IS TO CERTIFY THAT THE ABOVE PLAN WAS PREPARED FROM FIELD NOTES OF ACTUAL SURVEYS MADE BY ME OR UNDER MY SUPERVISION AND THAT THE SAME ARE TRUE AND CORRECT TO THE BEST OF MY KNOWLEDGE AND BELIEF.

<b>UNTAH ENGINEERING &amp; LAND SURVEYING</b>	
85 SOUTH 200 EAST - VERNAL, UTAH 84078	
(435) 789-1017	
SCALE 1" = 1000'	DATE SURVEYED: 01-05-12
PARTY L.S. D.S. C.C.	DATE DRAWN: 01-19-12
WEATHER COLD	REFERENCES G.L.O. PLAT
	FILE SGOMI

NAD 83 (#11-2H TARGET BOTTOM HOLE)	NAD 83 (#11-2H FORMATION ENTRY)	NAD 83 (#11-2H SURFACE LOCATION)
LATITUDE = 37°16'09.37" (37.269270)	LATITUDE = 37°16'49.39" (37.280387)	LATITUDE = 37°16'54.22" (37.281727)
LONGITUDE = 98°03'00.30" (98.050063)	LONGITUDE = 98°03'00.44" (98.050122)	LONGITUDE = 98°03'15.60" (98.054334)
NAD 27 (#11-2H TARGET BOTTOM HOLE)	NAD 27 (#11-2H FORMATION ENTRY)	NAD 27 (#11-2H SURFACE LOCATION)
LATITUDE = 37°16'09.30" (37.269250)	LATITUDE = 37°16'49.32" (37.280367)	LATITUDE = 37°16'54.15" (37.281708)
LONGITUDE = 98°02'59.08" (98.049744)	LONGITUDE = 98°02'59.22" (98.049783)	LONGITUDE = 98°03'14.38" (98.053994)

SGOMI

PRODUCTION FACILITY LAYOUT FOR

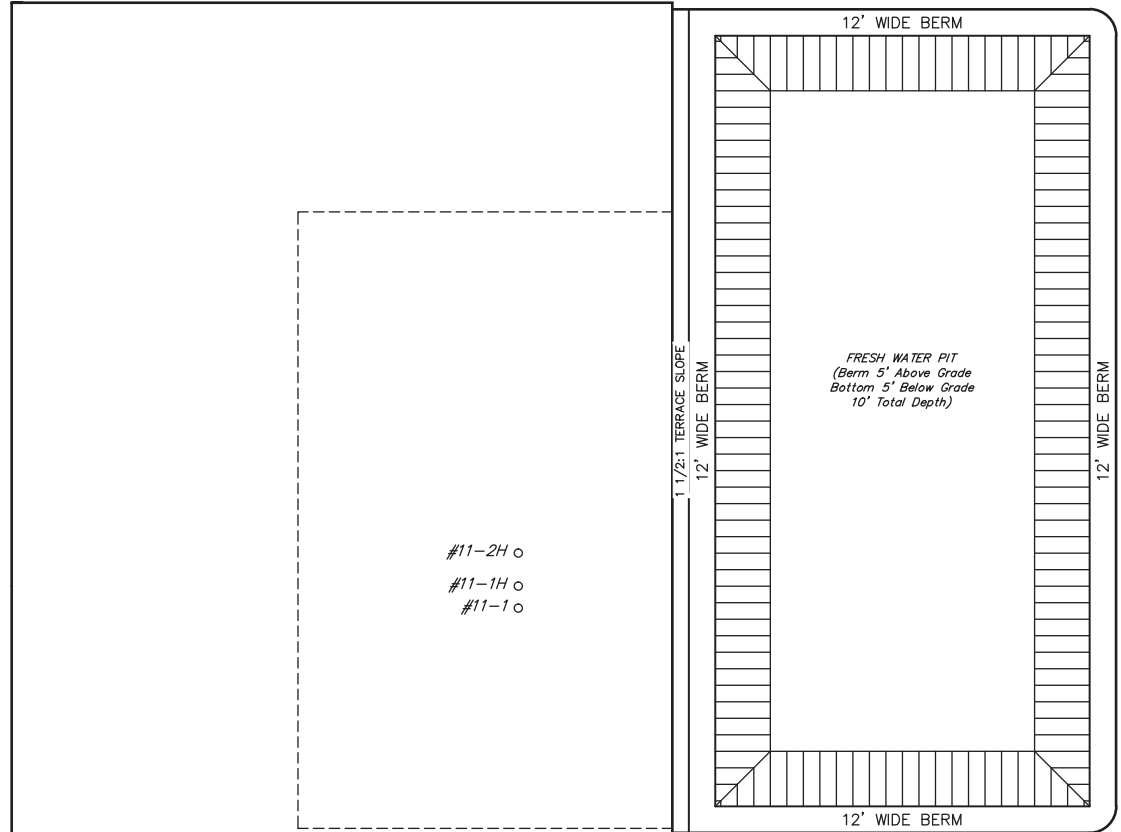
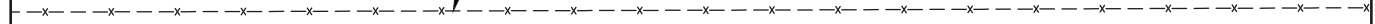
PARSONS TRUST 3207 #11-1, #11-1H & #11-2H  
SECTION 11, T32S, R7W, 6th P.M.  
NW 1/4 NW 1/4

FIGURE #3

SCALE: 1" = 60'  
DATE: 02-01-12  
DRAWN BY: C.C.

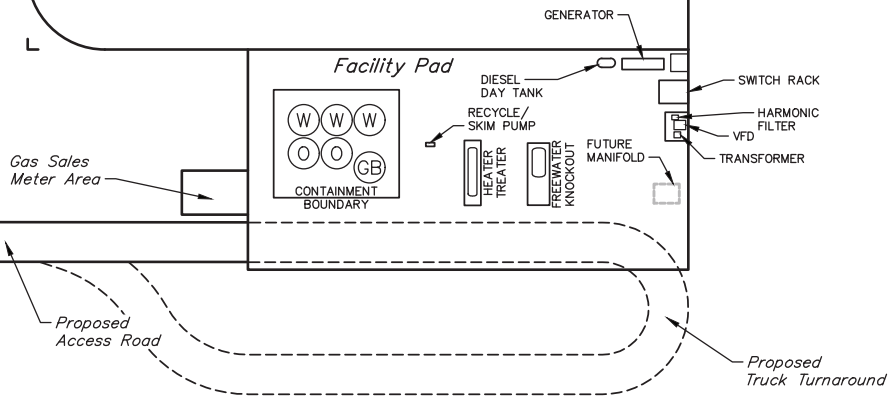


Existing  
Fence



#11-2H  
#11-1H  
#11-1

FRESH WATER PIT  
(Berm 5' Above Grade  
Bottom 5' Below Grade  
10' Total Depth)



Facility Pad

GENERATOR

DIESEL DAY TANK

SWITCH RACK

RECYCLE/SKIM PUMP

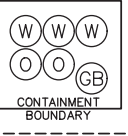
HARMONIC FILTER

HEATER TREATER

FREEWATER KNOCKOUT

VFD

TRANSFORMER



Gas Sales  
Meter Area

Proposed  
Access Road

Proposed  
Truck Turnaround