



DRILL STEM TEST REPORT

Prepared For: **Shelby Resources LLC**

2717 Canal Boulevard
Suite C
Hays, Kansas 67601

ATTN: Charlie Sturdavant

16/21S/16W/Pawnee

RGW Unit #1-16

Start Date: 2011.12.13 @ 22:50:00

End Date: 2011.12.14 @ 07:56:30

Job Ticket #: 18811 DST #: 1

Superior Testers Enterprises LLC
PO Box 138 Great Bend KS 67530
1-800-792-6902

Printed: 2011.12.14 @ 06:21:45



DRILL STEM TEST REPORT

Shelby Resources LLC
 2717 Canal Boulevard
 Suite C
 Hays, Kansas 67601
 ATTN: Charlie Sturdavant

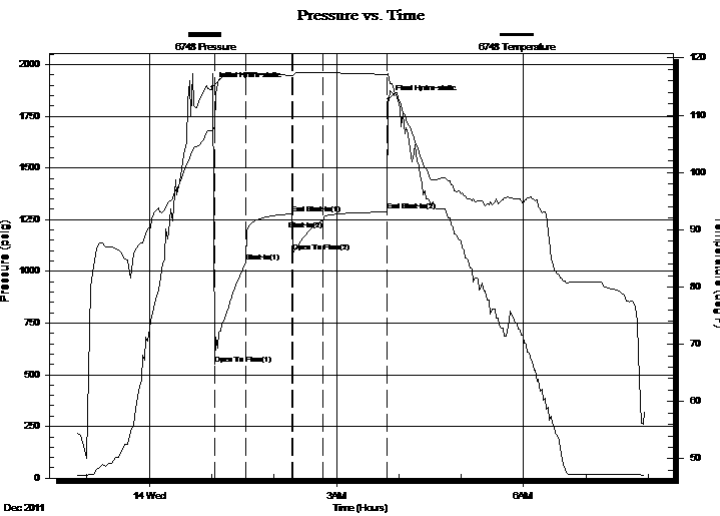
RGW Unit #1-16
16/21S/16W/Pawnee
 Job Ticket: 18811 **DST#: 1**
 Test Start: 2011.12.13 @ 22:50:00

GENERAL INFORMATION:

Formation: **Arbuckle**
 Deviated: No Whipstock: ft (KB)
 Test Type: Conventional Bottom Hole (Initial)
 Time Tool Opened: 01:02:30 Tester: Ken Swinney
 Time Test Ended: 07:56:30 Unit No: 3325 Great Bend/50
 Interval: **3750.00 ft (KB) To 3840.00 ft (KB) (TVD)** Reference Elevations: 2002.00 ft (KB)
 Total Depth: 3840.00 ft (KB) (TVD) 1991.00 ft (CF)
 Hole Diameter: 7.88 inches Hole Condition: Fair KB to GR/CF: 11.00 ft

Serial #: 6748 Outside
 Press @ Run Depth: 1246.50 psig @ 3836.92 ft (KB) Capacity: 5000.00 psig
 Start Date: 2011.12.13 End Date: 2011.12.14 Last Calib.: 2011.12.14
 Start Time: 22:50:00 End Time: 07:56:30 Time On Btm: 2011.12.14 @ 01:00:30
 Time Off Btm: 2011.12.14 @ 03:50:00

TEST COMMENT: 1ST Open 30 Minutes/Strong blow/Blow to bottom of bucket in 1 minute
 1ST Shut In 45 Minutes/No blow back
 2ND Open 30 Minutes/Strong blow/Blow to bottom of bucket in 1 minute
 2ND Shut In 60 Minutes/No blow back



PRESSURE SUMMARY

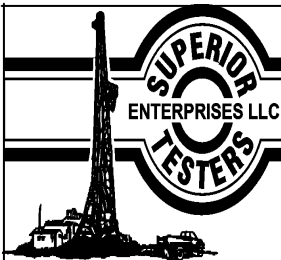
Time (Min.)	Pressure (psig)	Temp (deg F)	Annotation
0	1892.83	107.29	Initial Hydro-static
3	550.45	107.94	Open To Flow (1)
33	1047.18	117.37	Shut-In(1)
78	1278.31	116.94	End Shut-In(1)
78	1093.79	116.92	Open To Flow (2)
107	1246.50	117.44	Shut-In(2)
169	1294.18	117.14	End Shut-In(2)
170	1831.04	117.29	Final Hydro-static

Recovery

Length (ft)	Description	Volume (bbl)
2220.00	Slightly gas cut Muddy Water	30.43
0.00	Gas 1% Mud 15% Water 84%	0.00
120.00	Mud 100%	1.75
0.00	Recovery Chlorides 27000 ppm	0.00
0.00	Recov resistivity .58 ohms @ 65 degrees	0.00

Gas Rates

Choke (inches)	Pressure (psig)	Gas Rate (Mcf/d)



DRILL STEM TEST REPORT

Shelby Resources LLC
 2717 Canal Boulevard
 Suite C
 Hays, Kansas 67601
 ATTN: Charlie Sturdavant

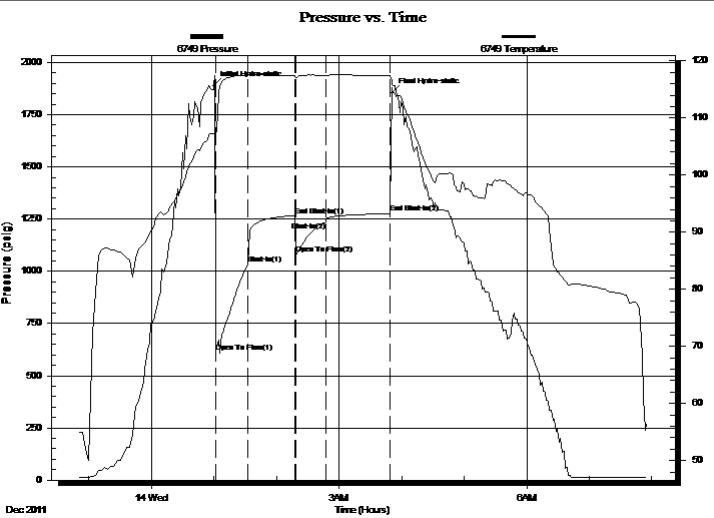
RGW Unit #1-16
16/21S/16W/Pawnee
 Job Ticket: 18811 **DST#: 1**
 Test Start: 2011.12.13 @ 22:50:00

GENERAL INFORMATION:

Formation: **Arbuckle**
 Deviated: No Whipstock: ft (KB)
 Time Tool Opened: 01:02:30
 Time Test Ended: 07:56:30
 Interval: **3750.00 ft (KB) To 3840.00 ft (KB) (TVD)**
 Total Depth: 3840.00 ft (KB) (TVD)
 Hole Diameter: 7.88 inches Hole Condition: Fair
 Test Type: Conventional Bottom Hole (Initial)
 Tester: Ken Swinney
 Unit No: 3325 Great Bend/50
 Reference Elevations: 2002.00 ft (KB)
 1991.00 ft (CF)
 KB to GR/CF: 11.00 ft

Serial #: 6749 Inside
 Press @ Run Depth: 1277.92 psig @ 3835.92 ft (KB) Capacity: 5000.00 psig
 Start Date: 2011.12.13 End Date: 2011.12.14 Last Calib.: 2011.12.14
 Start Time: 22:50:00 End Time: 07:56:00 Time On Btm: 2011.12.14 @ 01:00:00
 Time Off Btm: 2011.12.14 @ 03:51:00

TEST COMMENT: 1ST Open 30 Minutes/Strong blow/Blow to bottom of bucket in 1 minute
 1ST Shut In 45 Minutes/No blow back
 2ND Open 30 Minutes/Strong blow/Blow to bottom of bucket in 1 minute
 2ND Shut In 60 Minutes/No blow back



PRESSURE SUMMARY

Time (Min.)	Pressure (psig)	Temp (deg F)	Annotation
0	1887.66	107.33	Initial Hydro-static
2	615.50	107.03	Open To Flow (1)
33	1034.36	117.48	Shut-In(1)
78	1267.36	117.44	End Shut-In(1)
79	1082.44	117.03	Open To Flow (2)
107	1235.72	117.43	Shut-In(2)
169	1277.92	117.43	End Shut-In(2)
171	1855.75	116.05	Final Hydro-static

Recovery

Length (ft)	Description	Volume (bbl)
2220.00	Slightly gas cut Muddy Water	30.43
0.00	Gas 1% Mud 15% Water 84%	0.00
120.00	Mud 100%	1.75
0.00	Recovery Chlorides 27000 ppm	0.00
0.00	Recov resistivity .58 ohms @ 65 degrees	0.00

Gas Rates

Choke (inches)	Pressure (psig)	Gas Rate (Mcf/d)



DRILL STEM TEST REPORT

TOOL DIAGRAM

Shelby Resources LLC
 2717 Canal Boulevard
 Suite C
 Hays, Kansas 67601
 ATTN: Charlie Sturdavant

RGW Unit #1-16
16/21S/16W/Pawnee
 Job Ticket: 18811 **DST#: 1**
 Test Start: 2011.12.13 @ 22:50:00

Tool Information

Drill Pipe:	Length: 3516.00 ft	Diameter: 3.88 inches	Volume: 51.42 bbl	Tool Weight:	2000.00 lb
Heavy Wt. Pipe:	Length: 0.00 ft	Diameter: 0.00 inches	Volume: 0.00 bbl	Weight set on Packer:	20000.00 lb
Drill Collar:	Length: 210.00 ft	Diameter: 2.25 inches	Volume: 1.03 bbl	Weight to Pull Loose:	76000.00 lb
			<u>Total Volume: 52.45 bbl</u>	Tool Chased	0.00 ft
Drill Pipe Above KB:	4.75 ft			String Weight: Initial	58000.00 lb
Depth to Top Packer:	3750.00 ft			Final	70000.00 lb
Depth to Bottom Packer:	ft				
Interval between Packers:	89.92 ft				
Tool Length:	118.67 ft				
Number of Packers:	2	Diameter:	6.75 inches		
Tool Comments:					

Tool Description	Length (ft)	Serial No.	Position	Depth (ft)	Accum. Lengths
Shut-in tool	5.00			3726.25	
Hydraulic tool	5.00			3731.25	
Change over sub	0.75			3732.00	
Jars	6.00			3738.00	
Safety Joint	2.00			3740.00	
Packer	5.00			3745.00	28.75 Bottom Of Top Packer
Packer	5.00			3750.00	
Anchor	6.00			3756.00	
change over sub	0.75			3756.75	
drill pipe	63.42			3820.17	
change over sub	0.75			3820.92	
anchor	14.00			3834.92	
Recorder	1.00	6749	Inside	3835.92	
Recorder	1.00	6748	Outside	3836.92	
bull plug	3.00			3839.92	89.92 Bottom Packers & Anchor

Total Tool Length: 118.67



DRILL STEM TEST REPORT

FLUID SUMMARY

Shelby Resources LLC
 2717 Canal Boulevard
 Suite C
 Hays, Kansas 67601
 ATTN: Charlie Sturdavant

RGW Unit #1-16
16/21S/16W/Pawnee
 Job Ticket: 18811 **DST#: 1**
 Test Start: 2011.12.13 @ 22:50:00

Mud and Cushion Information

Mud Type: Gel Chem	Cushion Type:	Oil API:	deg API
Mud Weight: 9.00 lb/gal	Cushion Length: ft	Water Salinity:	ppm
Viscosity: 54.00 sec/qt	Cushion Volume: bbl		
Water Loss: 7.20 in ³	Gas Cushion Type:		
Resistivity: ohm.m	Gas Cushion Pressure: psig		
Salinity: 6800.00 ppm			
Filter Cake: 1.00 inches			

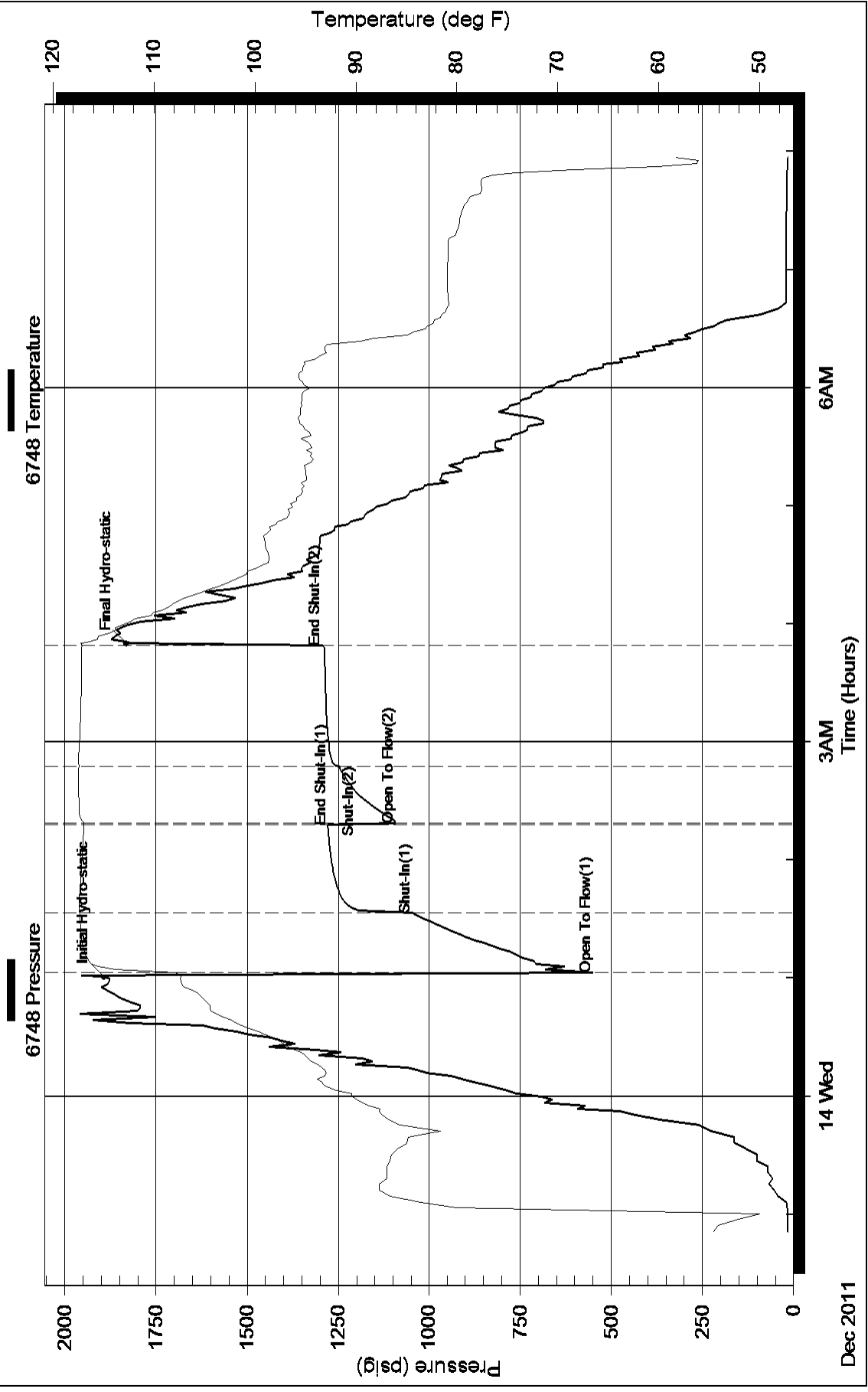
Recovery Information

Recovery Table

Length ft	Description	Volume bbl
2220.00	Slightly gas cut Muddy Water	30.427
0.00	Gas 1% Mud 15% Water 84%	0.000
120.00	Mud 100%	1.755
0.00	Recovery Chlorides 27000 ppm	0.000
0.00	Recov resistivity .58 ohms @ 65 degrees	0.000

Total Length: 2340.00 ft Total Volume: 32.182 bbl
 Num Fluid Samples: 0 Num Gas Bombs: 0 Serial #:
 Laboratory Name: Laboratory Location:
 Recovery Comments:

Pressure vs. Time



Pressure vs. Time

