

Both

TRANS PACIFIC OIL CORPORATION
QUENZER-NORTON LEASE
SE.1/4, SECTION 13, T17S, R26W
NESS COUNTY, KANSAS

Notes:

1. Set iron rod at location site.
2. All flagging Red & Yellow.
3. Overhead power available at W. line, Sec.13 and N. & S. lines of SW.1/4, Sec.13.
4. Kansas One Call System Inc. should be notified before excavation (1-800-344-7233).
5. CAUTION; Various pipelines in Sec.13.
6. Contact landowner for best access.
7. Location fell in a E-W fence and under a E-W o'hd. electric service line, set (2) alternates.

*Drillsite Location
 Quenzer-Norton "B" Unit #1-13
 * 5'FSL 2310'FEL
 Ground Elevation = 2480

Y = 695927 X = 1529516

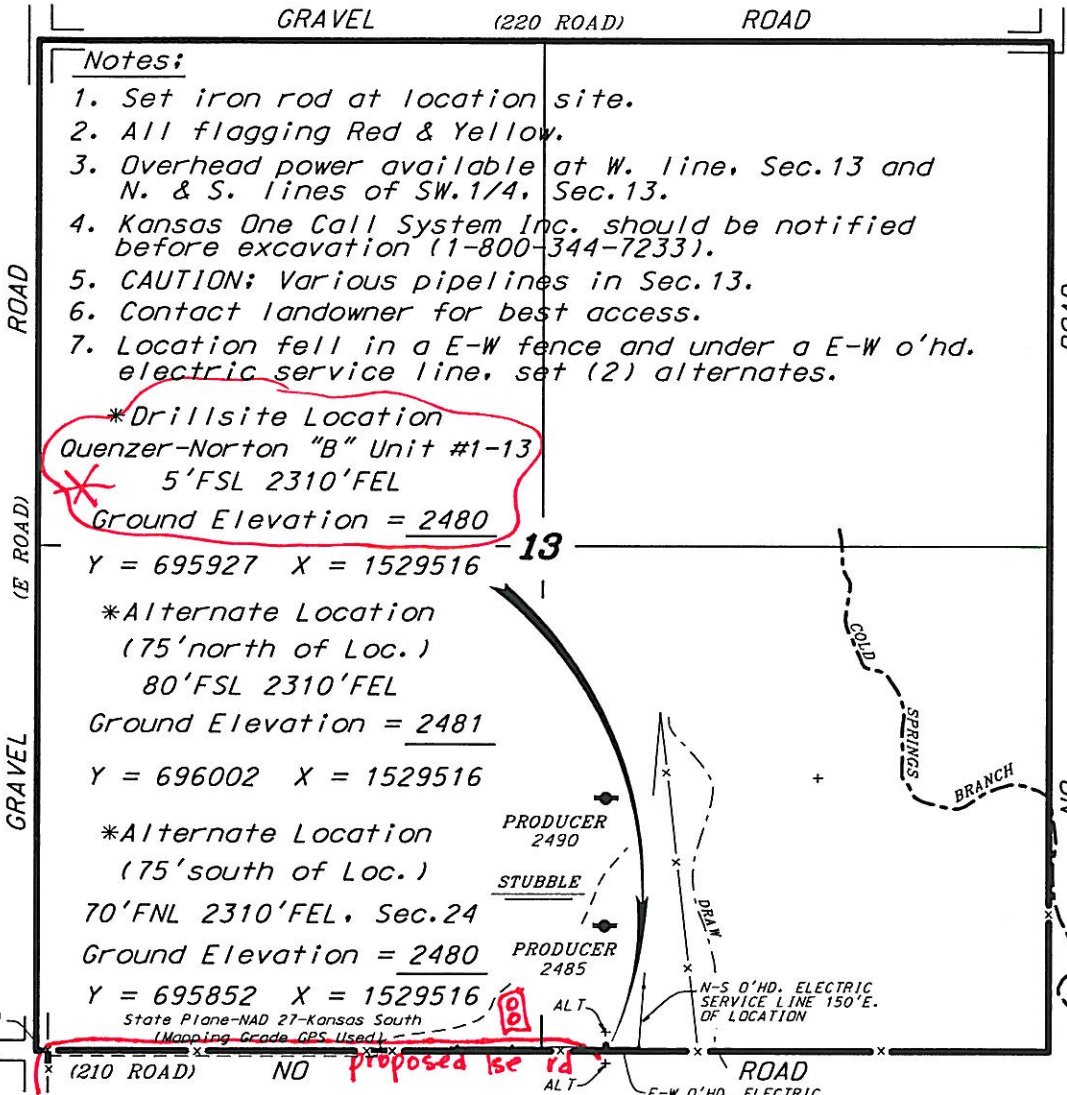
*Alternate Location
 (75' north of Loc.)
 80'FSL 2310'FEL
 Ground Elevation = 2481

Y = 696002 X = 1529516

*Alternate Location
 (75' south of Loc.)
 70'FNL 2310'FEL, Sec.24
 Ground Elevation = 2480

Y = 695852 X = 1529516

State Plane-NAD 27-Kansas South
(Mapping Grade GPS Used)



*Ingress and egress to location as shown on this plat is per usage only and may not be legally opened for public use. Contact landowner, tenant and county road department for access.

SECTION 24

