



TEMPORARY ABANDONMENT WELL APPLICATION

OPERATOR: License# _____
 Name: _____
 Address 1: _____
 Address 2: _____
 City: _____ State: _____ Zip: _____ + _____
 Contact Person: _____
 Phone: (_____) _____
 Contact Person Email: _____
 Field Contact Person: _____
 Field Contact Person Phone: (_____) _____

API No. 15- _____
 Spot Description: _____
 _____ Sec. _____ Twp. _____ S. R. _____ E W
 _____ feet from N / S Line of Section
 _____ feet from E / W Line of Section
 GPS Location: Lat: _____, Long: _____
 County: _____ (e.g. xx.xxxxx) (e.g. -xxx.xxxxx)
 Lease Name: _____ Well #: _____
 Elevation: _____ GL KB
 Well Type: (check one) Oil Gas OG WSW Other: _____
 SWD Permit #: _____ ENHR Permit #: _____
 Gas Storage Permit #: _____
 Spud Date: _____ Date Shut-In: _____

| | Conductor | Surface | Production | Intermediate | Liner | Tubing |
|------------------|-----------|---------|------------|--------------|-------|--------|
| Size | | | | | | |
| Setting Depth | | | | | | |
| Amount of Cement | | | | | | |
| Top of Cement | | | | | | |
| Bottom of Cement | | | | | | |

Casing Fluid Level: _____ How Determined? _____ Date: _____
 Casing Squeeze(s): _____ to _____ w / _____ sacks of cement, _____ to _____ w / _____ sacks of cement. Date: _____
 (top) (bottom) (top) (bottom)
 Do you have a valid Oil & Gas Lease? Yes No
 Depth and Type: Junk in Hole at _____ (depth) Tools in Hole at _____ (depth) Casing Leaks: Yes No Depth of casing leak(s): _____
 Type Completion: ALT. I ALT. II Depth of: DV Tool: _____ w / _____ sacks of cement Port Collar: _____ w / _____ sack of cement
 (depth) (depth)
 Packer Type: _____ Size: _____ Inch Set at: _____ Feet
 Total Depth: _____ Plug Back Depth: _____ Plug Back Method: _____

Geological Data:

| Formation Name | Formation Top | Formation Base | Completion Information |
|----------------|---------------|----------------|--|
| 1. _____ | At: _____ | to _____ Feet | Perforation Interval _____ to _____ Feet or Open Hole Interval _____ to _____ Feet |
| 2. _____ | At: _____ | to _____ Feet | Perforation Interval _____ to _____ Feet or Open Hole Interval _____ to _____ Feet |

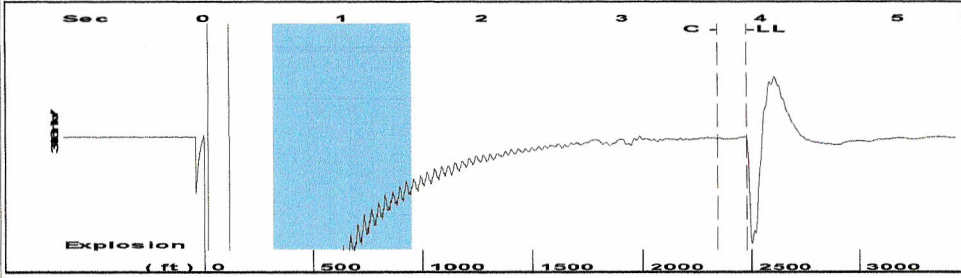
Submitted Electronically

| | | | | | |
|--|----------------------------|-----------------|---|----------------------|---------------------------------|
| Do NOT Write in This Space - KCC USE ONLY | Date Tested: _____ | Results: _____ | Date Plugged: _____ | Date Repaired: _____ | Date Put Back in Service: _____ |
| | Review Completed by: _____ | Comments: _____ | TA Approved: Yes <input type="checkbox"/> Denied <input type="checkbox"/> | | |

Mail to the Appropriate KCC Conservation Office:

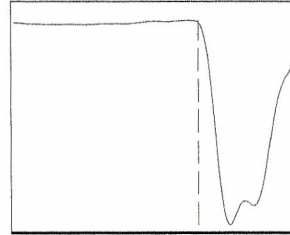
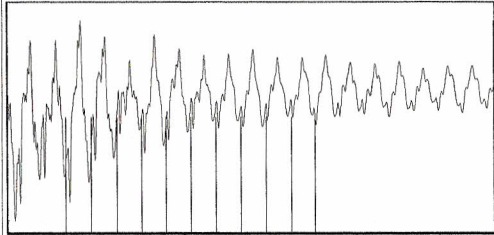
| | | |
|--|--|--------------------|
| | KCC District Office #1 - 210 E. Frontview, Suite A, Dodge City, KS 67801 | Phone 620.225.8888 |
| | KCC District Office #2 - 3450 N. Rock Road, Building 600, Suite 601, Wichita, KS 67226 | Phone 316.630.4000 |
| | KCC District Office #3 - 1500 SW Seventh Steet, Chanute, KS 66720 | Phone 620.432.2300 |
| | KCC District Office #4 - 2301 E. 13th Street, Hays, KS 67601-2651 | Phone 785.625.0550 |
| | Underground Porosity Gas Storage (UPGS) 8200 E. 34th Street Circle N., Suite 1003, Wichita, KS 67226 | Phone 316.734.4933 |

Group: Garden City TA'd Well: ROTH F#2-9 (acquired on: 01/19/12 11:11:57)



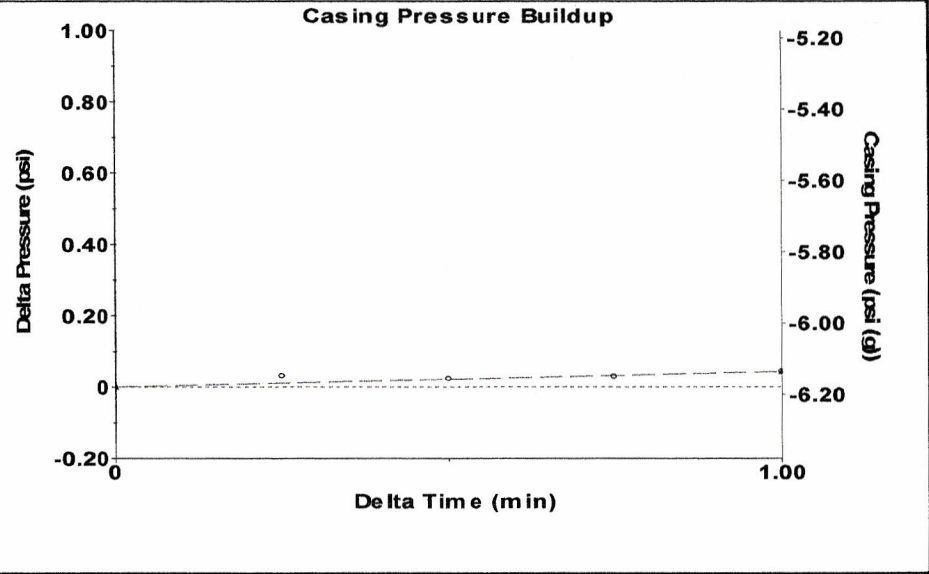
Filter Type High Pass Automatic Collar Count Yes Time 3.898 sec
 Manual Acoustic Velo 1238.28 ft/s Manual JTS/sec 19.5312 Joints 78.2361 Jts
 Depth 2480.09 ft

[0.5 to 1.5 (Sec)]



Analysis Method: Automatic

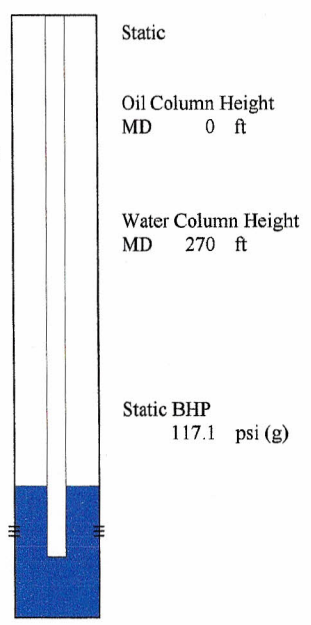
Group: Garden City TA'd Well: ROTH F#2-9 (acquired on: 01/19/12 11:11:57)



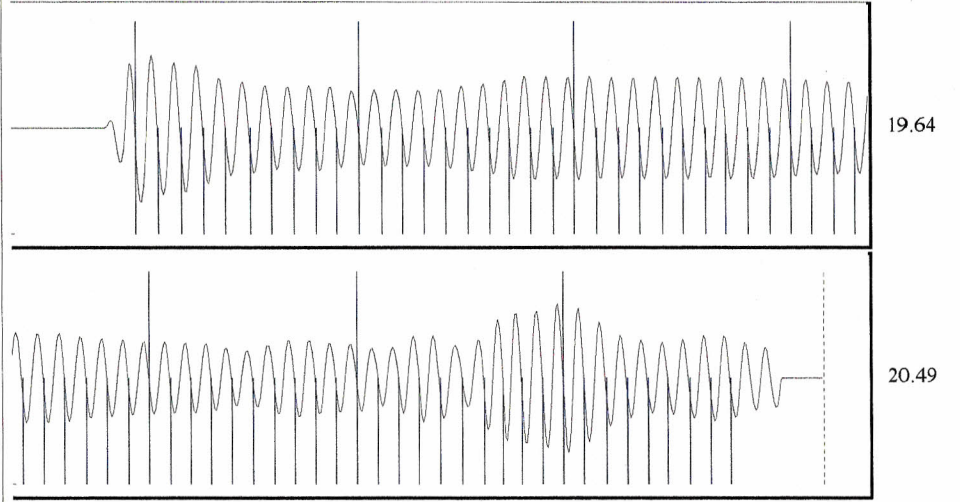
Change in Pressure 0.04 psi PT8746 Range 0 - ? psi
 Change in Time 1.00 min

Group: Garden City TA'd Well: ROTH F#2-9 (acquired on: 01/19/12 11:11:57)

| Production | | Potential | | Casing Pressure | |
|-----------------------|----------------|--------------|--------|-------------------------------|---------|
| Oil | 0 | -*- | BBL/D | -6.2 | psi (g) |
| Water | 0 | -*- | BBL/D | 0.044 | psi |
| Gas | 0.0 | -*- | Mscf/D | 1.00 | min |
| IPR Method | | Vogel | | Gas/Liquid Interface Pressure | |
| PBHP/SBHP | | - *- | | -5.6 psi (g) | |
| Production Efficiency | | 0.0 | | Liquid Level Depth | |
| Oil | 40 deg.API | | | 2480.09 ft | |
| Water | 1.05 Sp.Gr.H2O | | | Pump Intake Depth | |
| Gas | 0.73 Sp.Gr.AIR | | | 2910.00 ft | |
| Acoustic Velocity | | 1272.49 ft/s | | Formation Depth | |
| | | | | 2750.00 ft | |



Group: Garden City TA'd Well: ROTH F#2-9 (acquired on: 01/19/12 11:11:57)



Acoustic Velocity 1272.49 ft/s Joints counted 68
 Joints Per Second 20.0708 jts/sec Joints to liquid level 78.2361
 Depth to liquid level 2480.09 ft Filter Width 17.5312 21.5312
 Automatic Collar Count Yes Time to 1st Collar 0.292 3.68