



Confidentiality Requested:

Yes  No

KANSAS CORPORATION COMMISSION 1073311  
OIL & GAS CONSERVATION DIVISION

Form ACO-1

August 2013

Form must be Typed  
Form must be Signed  
All blanks must be Filled

WELL COMPLETION FORM  
WELL HISTORY - DESCRIPTION OF WELL & LEASE

OPERATOR: License # \_\_\_\_\_

Name: \_\_\_\_\_

Address 1: \_\_\_\_\_

Address 2: \_\_\_\_\_

City: \_\_\_\_\_ State: \_\_\_\_\_ Zip: \_\_\_\_\_ + \_\_\_\_\_

Contact Person: \_\_\_\_\_

Phone: ( \_\_\_\_\_ ) \_\_\_\_\_

CONTRACTOR: License # \_\_\_\_\_

Name: \_\_\_\_\_

Wellsite Geologist: \_\_\_\_\_

Purchaser: \_\_\_\_\_

Designate Type of Completion:

- New Well       Re-Entry       Workover
- Oil       WSW       SWD       SIOW
- Gas       D&A       ENHR       SIGW
- OG       GSW       Temp. Abd.
- CM (Coal Bed Methane)
- Cathodic       Other (Core, Expl., etc.): \_\_\_\_\_

If Workover/Re-entry: Old Well Info as follows:

Operator: \_\_\_\_\_

Well Name: \_\_\_\_\_

Original Comp. Date: \_\_\_\_\_ Original Total Depth: \_\_\_\_\_

- Deepening       Re-perf.       Conv. to ENHR       Conv. to SWD
- Plug Back       Conv. to GSW       Conv. to Producer
- Commingled      Permit #: \_\_\_\_\_
- Dual Completion      Permit #: \_\_\_\_\_
- SWD      Permit #: \_\_\_\_\_
- ENHR      Permit #: \_\_\_\_\_
- GSW      Permit #: \_\_\_\_\_

Spud Date or Recompletion Date	Date Reached TD	Completion Date or Recompletion Date
-----------------------------------	-----------------	---

API No. 15 - \_\_\_\_\_

Spot Description: \_\_\_\_\_

\_\_\_\_\_ - \_\_\_\_\_ - \_\_\_\_\_ Sec. \_\_\_\_\_ Twp. \_\_\_\_\_ S. R. \_\_\_\_\_  East  West

\_\_\_\_\_ Feet from  North /  South Line of Section

\_\_\_\_\_ Feet from  East /  West Line of Section

Footages Calculated from Nearest Outside Section Corner:

- NE       NW       SE       SW

GPS Location: Lat: \_\_\_\_\_, Long: \_\_\_\_\_  
(e.g. xx.xxxxx) (e.g. -xxx.xxxxx)

Datum:  NAD27       NAD83       WGS84

County: \_\_\_\_\_

Lease Name: \_\_\_\_\_ Well #: \_\_\_\_\_

Field Name: \_\_\_\_\_

Producing Formation: \_\_\_\_\_

Elevation: Ground: \_\_\_\_\_ Kelly Bushing: \_\_\_\_\_

Total Vertical Depth: \_\_\_\_\_ Plug Back Total Depth: \_\_\_\_\_

Amount of Surface Pipe Set and Cemented at: \_\_\_\_\_ Feet

Multiple Stage Cementing Collar Used?  Yes  No

If yes, show depth set: \_\_\_\_\_ Feet

If Alternate II completion, cement circulated from: \_\_\_\_\_

feet depth to: \_\_\_\_\_ w/ \_\_\_\_\_ sx cmt.

Drilling Fluid Management Plan

*(Data must be collected from the Reserve Pit)*

Chloride content: \_\_\_\_\_ ppm Fluid volume: \_\_\_\_\_ bbls

Dewatering method used: \_\_\_\_\_

Location of fluid disposal if hauled offsite: \_\_\_\_\_

Operator Name: \_\_\_\_\_

Lease Name: \_\_\_\_\_ License #: \_\_\_\_\_

Quarter \_\_\_\_\_ Sec. \_\_\_\_\_ Twp. \_\_\_\_\_ S. R. \_\_\_\_\_  East  West

County: \_\_\_\_\_ Permit #: \_\_\_\_\_

AFFIDAVIT

I am the affiant and I hereby certify that all requirements of the statutes, rules and regulations promulgated to regulate the oil and gas industry have been fully complied with and the statements herein are complete and correct to the best of my knowledge.

Submitted Electronically

KCC Office Use ONLY

- Confidentiality Requested  
Date: \_\_\_\_\_
- Confidential Release Date: \_\_\_\_\_
- Wireline Log Received
- Geologist Report Received
- UIC Distribution
- ALT  I  II  III Approved by: \_\_\_\_\_ Date: \_\_\_\_\_

1073311

Operator Name: \_\_\_\_\_ Lease Name: \_\_\_\_\_ Well #: \_\_\_\_\_

Sec. \_\_\_\_\_ Twp. \_\_\_\_\_ S. R. \_\_\_\_\_  East  West County: \_\_\_\_\_

**INSTRUCTIONS:** Show important tops of formations penetrated. Detail all cores. Report all final copies of drill stems tests giving interval tested, time tool open and closed, flowing and shut-in pressures, whether shut-in pressure reached static level, hydrostatic pressures, bottom hole temperature, fluid recovery, and flow rates if gas to surface test, along with final chart(s). Attach extra sheet if more space is needed.

Final Radioactivity Log, Final Logs run to obtain Geophysical Data and Final Electric Logs must be emailed to kcc-well-logs@kcc.ks.gov. Digital electronic log files must be submitted in LAS version 2.0 or newer AND an image file (TIFF or PDF).

Drill Stem Tests Taken <i>(Attach Additional Sheets)</i>	<input type="checkbox"/> Yes <input type="checkbox"/> No	<input type="checkbox"/> Log	Formation (Top), Depth and Datum	<input type="checkbox"/> Sample
Samples Sent to Geological Survey	<input type="checkbox"/> Yes <input type="checkbox"/> No	Name	Top	Datum
Cores Taken	<input type="checkbox"/> Yes <input type="checkbox"/> No			
Electric Log Run	<input type="checkbox"/> Yes <input type="checkbox"/> No			
List All E. Logs Run:				

CASING RECORD <input type="checkbox"/> New <input type="checkbox"/> Used							
Report all strings set-conductor, surface, intermediate, production, etc.							
Purpose of String	Size Hole Drilled	Size Casing Set (In O.D.)	Weight Lbs. / Ft.	Setting Depth	Type of Cement	# Sacks Used	Type and Percent Additives

ADDITIONAL CEMENTING / SQUEEZE RECORD				
Purpose:	Depth Top Bottom	Type of Cement	# Sacks Used	Type and Percent Additives
<input type="checkbox"/> Perforate				
<input type="checkbox"/> Protect Casing				
<input type="checkbox"/> Plug Back TD				
<input type="checkbox"/> Plug Off Zone				

Did you perform a hydraulic fracturing treatment on this well?  Yes  No *(If No, skip questions 2 and 3)*

Does the volume of the total base fluid of the hydraulic fracturing treatment exceed 350,000 gallons?  Yes  No *(If No, skip question 3)*

Was the hydraulic fracturing treatment information submitted to the chemical disclosure registry?  Yes  No *(If No, fill out Page Three of the ACO-1)*

Shots Per Foot	PERFORATION RECORD - Bridge Plugs Set/Type Specify Footage of Each Interval Perforated	Acid, Fracture, Shot, Cement Squeeze Record <i>(Amount and Kind of Material Used)</i>	Depth

TUBING RECORD:      Size: \_\_\_\_\_ Set At: \_\_\_\_\_ Packer At: \_\_\_\_\_ Liner Run:  Yes  No

Date of First, Resumed Production, SWD or ENHR: \_\_\_\_\_ Producing Method:  
 Flowing  Pumping  Gas Lift  Other *(Explain)* \_\_\_\_\_

Estimated Production Per 24 Hours	Oil Bbls.	Gas Mcf	Water Bbls.	Gas-Oil Ratio	Gravity

<b>DISPOSITION OF GAS:</b> <input type="checkbox"/> Vented <input type="checkbox"/> Sold <input type="checkbox"/> Used on Lease <i>(If vented, Submit ACO-18.)</i>	<b>METHOD OF COMPLETION:</b> <input type="checkbox"/> Open Hole <input type="checkbox"/> Perf. <input type="checkbox"/> Dually Comp. <input type="checkbox"/> Commingled <i>(Submit ACO-5)</i> <i>(Submit ACO-4)</i> <input type="checkbox"/> Other <i>(Specify)</i> _____	<b>PRODUCTION INTERVAL:</b> _____ _____
--	---	---



## DRILL STEM TEST REPORT

Prepared For: **Trans Pacific Oil Corporation**

100 South Main  
Suite 200  
Wichita, Kansas 67202+3735

ATTN: Christina Goodrich

**14/17S/26W/Ness**

**Dumler Unit A 1-14**

Start Date: 2011.10.31 @ 15:16:00

End Date: 2011.10.31 @ 21:57:30

Job Ticket #: 18792                      DST #: 1

Superior Testers Enterprises LLC  
PO Box 138 Great Bend KS 67530  
1-800-792-6902

Printed: 2011.10.31 @ 20:18:34

Trans Pacific Oil Corporation  
Dumler Unit A 1-14  
14/17S/26W/Ness  
DST # 1  
Marmaton  
2011.10.31



# DRILL STEM TEST REPORT

Trans Pacific Oil Corporation  
 100 South Main  
 Suite 200  
 Wichita, Kansas 67202+3735  
 ATTN: Christina Goodrich

**Dumler Unit A 1-14**

**14/17S/26W/Ness**

Job Ticket: 18792

**DST#: 1**

Test Start: 2011.10.31 @ 15:16:00

## GENERAL INFORMATION:

Formation: **Marmaton**

Deviated: No Whipstock: ft (KB)

Time Tool Opened: 16:53:30

Time Test Ended: 21:57:30

Test Type: Conventional Bottom Hole (Initial)

Tester: Ken Swinney

Unit No: 3325 Great Bend/190

**Interval: 4197.00 ft (KB) To 4310.00 ft (KB) (TVD)**

Reference Elevations: 2591.00 ft (KB)

Total Depth: 4310.00 ft (KB) (TVD)

2582.00 ft (CF)

Hole Diameter: 7.88 inches Hole Condition: Fair

KB to GR/CF: 9.00 ft

**Serial #: 6651**

**Inside**

Press @ Run Depth: 85.77 psig @ 4305.71 ft (KB)

Capacity: 5000.00 psig

Start Date: 2011.10.31

End Date:

2011.10.31

Last Calib.:

2011.10.31

Start Time:

15:16:00

End Time:

21:57:30

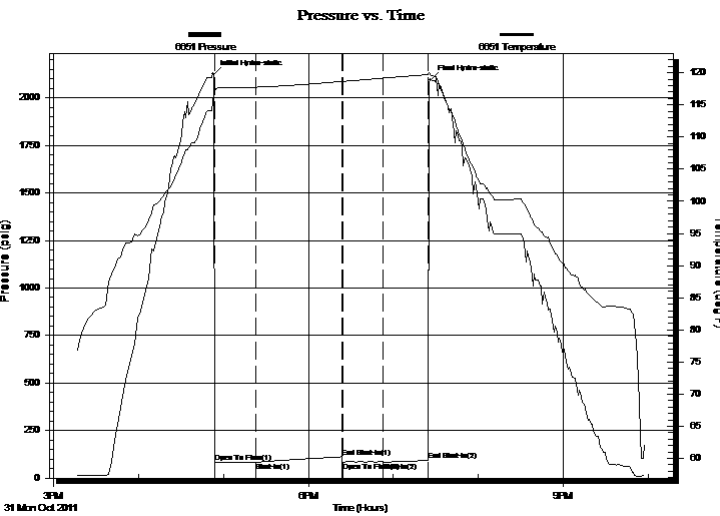
Time On Btm:

2011.10.31 @ 16:53:00

Time Off Btm:

2011.10.31 @ 19:26:30

**TEST COMMENT:** 1ST Open 30 Minutes/Weak blow/Blow built to 3/4 inch then died back to 1/4 inch  
 1ST Shut In 60 Minutes/No blow back  
 2ND Open 30 Minutes/No blow  
 2ND Shut In 30 Minutes/No blow back



## PRESSURE SUMMARY

Time (Min.)	Pressure (psig)	Temp (deg F)	Annotation
0	2122.84	116.90	Initial Hydro-static
1	84.65	117.02	Open To Flow (1)
30	85.30	117.77	Shut-In(1)
91	111.89	118.66	End Shut-In(1)
91	83.53	118.66	Open To Flow (2)
120	85.77	119.18	Shut-In(2)
152	92.15	119.73	End Shut-In(2)
154	2093.98	119.64	Final Hydro-static

## Recovery

## Gas Rates

Length (ft)	Description	Volume (bbl)
15.00	Watery oil cut mud	0.22
0.00	Water 5% Oil 10% Mud 85%	0.00

	Choke (inches)	Pressure (psig)	Gas Rate (Mcf/d)



# DRILL STEM TEST REPORT

Trans Pacific Oil Corporation

**Dumler Unit A 1-14**

100 South Main  
Suite 200  
Wichita, Kansas 67202+3735  
ATTN: Christina Goodrich

**14/17S/26W/Ness**

Job Ticket: 18792

**DST#: 1**

Test Start: 2011.10.31 @ 15:16:00

## GENERAL INFORMATION:

Formation: **Marmaton**

Deviated: No Whipstock: ft (KB)

Time Tool Opened: 16:53:30

Time Test Ended: 21:57:30

Test Type: Conventional Bottom Hole (Initial)

Tester: Ken Swinney

Unit No: 3325 Great Bend/190

**Interval: 4197.00 ft (KB) To 4310.00 ft (KB) (TVD)**

Reference Elevations: 2591.00 ft (KB)

Total Depth: 4310.00 ft (KB) (TVD)

2582.00 ft (CF)

Hole Diameter: 7.88 inches Hole Condition: Fair

KB to GR/CF: 9.00 ft

**Serial #: 6749 Outside**

Press @ Run Depth: 89.24 psig @ 4306.71 ft (KB)

Capacity: 5000.00 psig

Start Date: 2011.10.31

End Date: 2011.10.31

Last Calib.: 2011.10.31

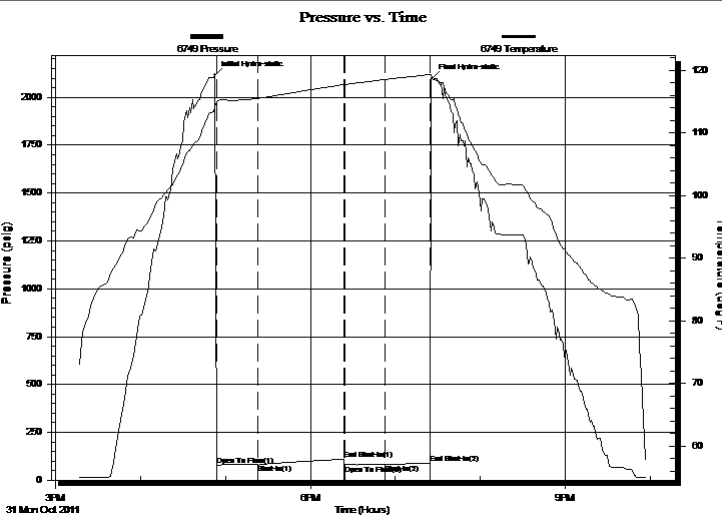
Start Time: 15:16:00

End Time: 21:58:00

Time On Btm: 2011.10.31 @ 16:52:30

Time Off Btm: 2011.10.31 @ 19:26:00

**TEST COMMENT:** 1ST Open 30 Minutes/Weak blow/Blow built to 3/4 inch then died back to 1/4 inch  
 1ST Shut In 60 Minutes/No blow back  
 2ND Open 30 Minutes/No blow  
 2ND Shut In 30 Minutes/No blow back



## PRESSURE SUMMARY

Time (Min.)	Pressure (psig)	Temp (deg F)	Annotation
0	2115.48	114.29	Initial Hydro-static
1	79.35	115.09	Open To Flow (1)
30	82.06	115.54	Shut-In(1)
91	108.91	117.72	End Shut-In(1)
92	79.77	117.73	Open To Flow (2)
121	82.13	118.57	Shut-In(2)
153	89.24	119.33	End Shut-In(2)
154	2099.88	119.06	Final Hydro-static

## Recovery

Length (ft)	Description	Volume (bbl)
15.00	Watery oil cut mud	0.22
0.00	Water 5% Oil 10% Mud 85%	0.00

## Gas Rates

	Choke (inches)	Pressure (psig)	Gas Rate (Mcf/d)



# DRILL STEM TEST REPORT

**TOOL DIAGRAM**

Trans Pacific Oil Corporation

**Dumler Unit A 1-14**

100 South Main  
Suite 200  
Wichita, Kansas 67202+3735  
ATTN: Christina Goodrich

**14/17S/26W/Ness**

Job Ticket: 18792

**DST#: 1**

Test Start: 2011.10.31 @ 15:16:00

## Tool Information

Drill Pipe:	Length: 4196.00 ft	Diameter: 3.88 inches	Volume: 61.36 bbl	Tool Weight: 2000.00 lb
Heavy Wt. Pipe:	Length: 0.00 ft	Diameter: 0.00 inches	Volume: 0.00 bbl	Weight set on Packer: 20000.00 lb
Drill Collar:	Length: 0.00 ft	Diameter: 0.00 inches	Volume: 0.00 bbl	Weight to Pull Loose: 80000.00 lb
		Total Volume: 61.36 bbl		Tool Chased 2.00 ft
Drill Pipe Above KB:	19.00 ft			String Weight: Initial 57000.00 lb
Depth to Top Packer:	4197.00 ft			Final 57000.00 lb
Depth to Bottom Packer:	ft			
Interval between Packers:	112.71 ft			
Tool Length:	132.71 ft			
Number of Packers:	2	Diameter: 6.75 inches		

Tool Comments:

Tool Description	Length (ft)	Serial No.	Position	Depth (ft)	Accum. Lengths
------------------	-------------	------------	----------	------------	----------------

Shut-in tool	5.00			4182.00	
Hydraulic tool	5.00			4187.00	
Packer	5.00			4192.00	20.00 Bottom Of Top Packer
Packer	5.00			4197.00	
Anchor	3.00			4200.00	
change over sub	0.75			4200.75	
drill pipe	93.21			4293.96	
change over sub	0.75			4294.71	
anchor	10.00			4304.71	
Recorder	1.00	6651	Inside	4305.71	
Recorder	1.00	6749	Outside	4306.71	
bull plug	3.00			4309.71	112.71 Bottom Packers & Anchor

**Total Tool Length: 132.71**



# DRILL STEM TEST REPORT

## FLUID SUMMARY

Trans Pacific Oil Corporation

**Dumler Unit A 1-14**

100 South Main  
Suite 200  
Wichita, Kansas 67202+3735  
ATTN: Christina Goodrich

**14/17S/26W/Ness**

Job Ticket: 18792

**DST#: 1**

Test Start: 2011.10.31 @ 15:16:00

### Mud and Cushion Information

Mud Type: Gel Chem  
Mud Weight: 9.00 lb/gal  
Viscosity: 50.00 sec/qt  
Water Loss: 6.80 in<sup>3</sup>  
Resistivity: ohm.m  
Salinity: 2800.00 ppm  
Filter Cake: 1.00 inches

Cushion Type:  
Cushion Length: ft  
Cushion Volume: bbl  
Gas Cushion Type:  
Gas Cushion Pressure: psig

Oil API: deg API  
Water Salinity: ppm

### Recovery Information

Recovery Table

Length ft	Description	Volume bbl
15.00	Watery oil cut mud	0.219
0.00	Water 5% Oil 10% Mud 85%	0.000

Total Length: 15.00 ft      Total Volume: 0.219 bbl

Num Fluid Samples: 0

Num Gas Bombs: 0

Serial #:

Laboratory Name:

Laboratory Location:

Recovery Comments:

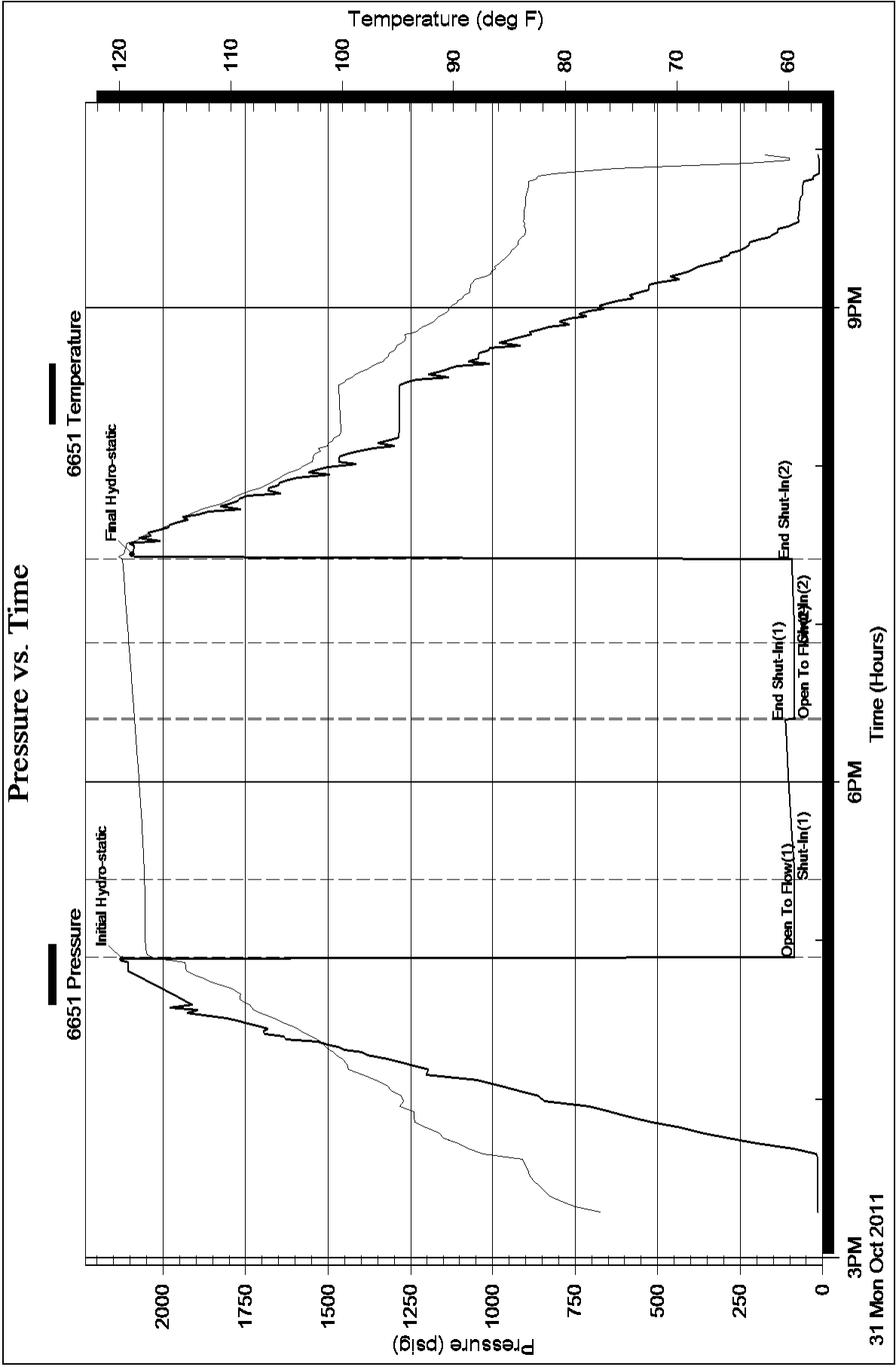
Serial #: 6651

Inside

Trans Pacific Oil Corporation

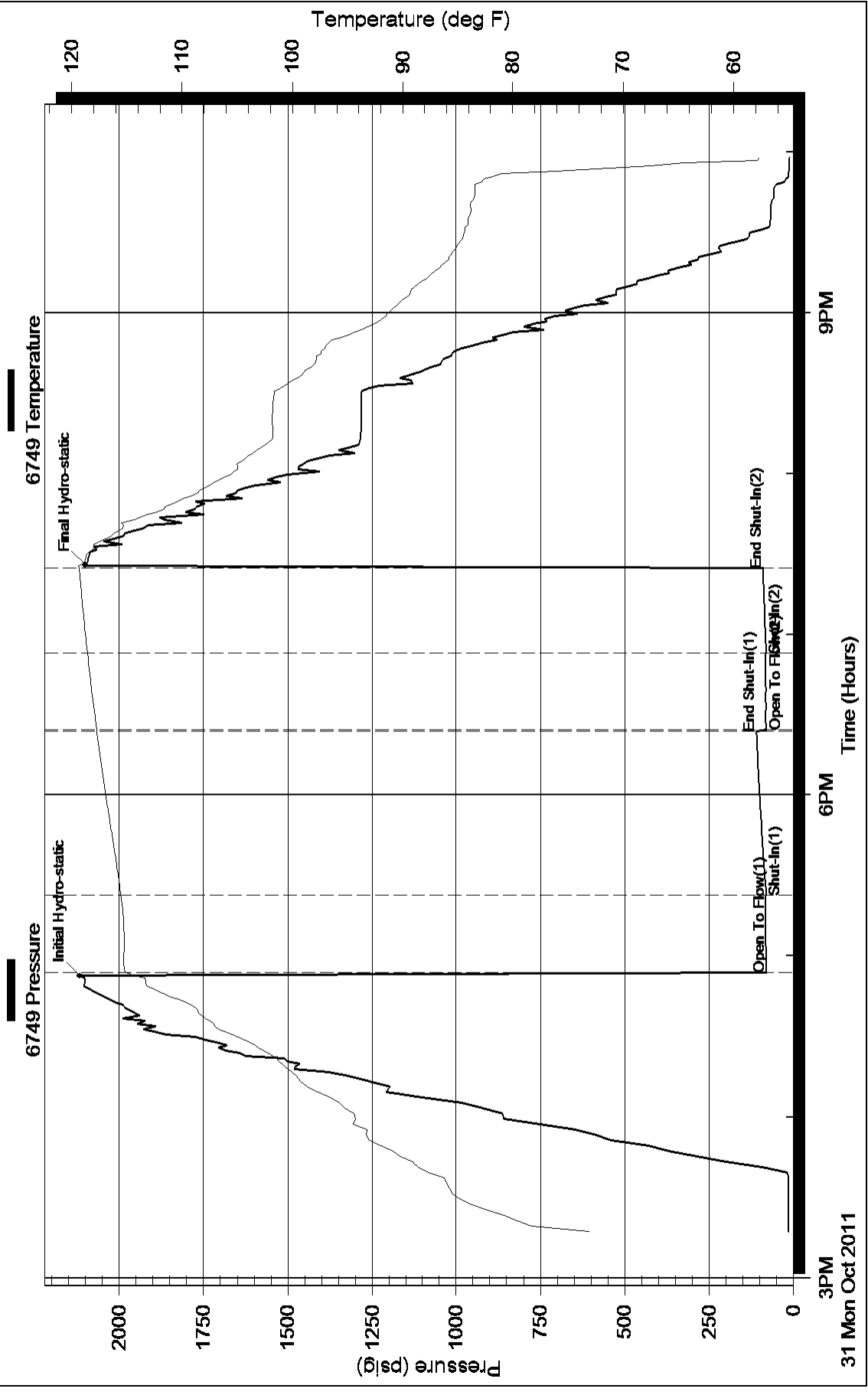
14/17S26W/Ness

DST Test Number: 1





# Pressure vs. Time





## DRILL STEM TEST REPORT

Prepared For: **Trans Pacific Oil Corporation**

100 South Main  
Suite 200  
Wichita, Kansas 67202+3735

ATTN: Christina Goodrich

**14/17S/26W/Ness**

**Dumler Unit A 1-14**

Start Date: 2011.11.01 @ 12:06:00

End Date: 2011.11.01 @ 20:01:00

Job Ticket #: 18792                      DST #: 2

Superior Testers Enterprises LLC  
PO Box 138 Great Bend KS 67530  
1-800-792-6902

Printed: 2011.11.01 @ 18:17:08



# DRILL STEM TEST REPORT

Trans Pacific Oil Corporation  
 100 South Main  
 Suite 200  
 Wichita, Kansas 67202+3735  
 ATTN: Christina Goodrich

**Dumler Unit A 1-14**

**14/17S/26W/Ness**

Job Ticket: 18792

**DST#: 2**

Test Start: 2011.11.01 @ 12:06:00

## GENERAL INFORMATION:

Formation: **Fort Scott**

Deviated: No Whipstock: ft (KB)

Time Tool Opened: 13:46:30

Time Test Ended: 20:01:00

Test Type: Conventional Bottom Hole (Initial)

Tester: Ken Swinney

Unit No: 3325 Great Bend/190

**Interval: 4376.00 ft (KB) To 4429.00 ft (KB) (TVD)**

Reference Elevations: 2591.00 ft (KB)

Total Depth: 4429.00 ft (KB) (TVD)

2582.00 ft (CF)

Hole Diameter: 7.88 inches Hole Condition: Fair

KB to GR/CF: 9.00 ft

**Serial #: 6749 Outside**

Press @ Run Depth: 76.12 psig @ 4425.90 ft (KB)

Capacity: 5000.00 psig

Start Date: 2011.11.01

End Date: 2011.11.01

Last Calib.: 2011.11.01

Start Time: 12:06:00

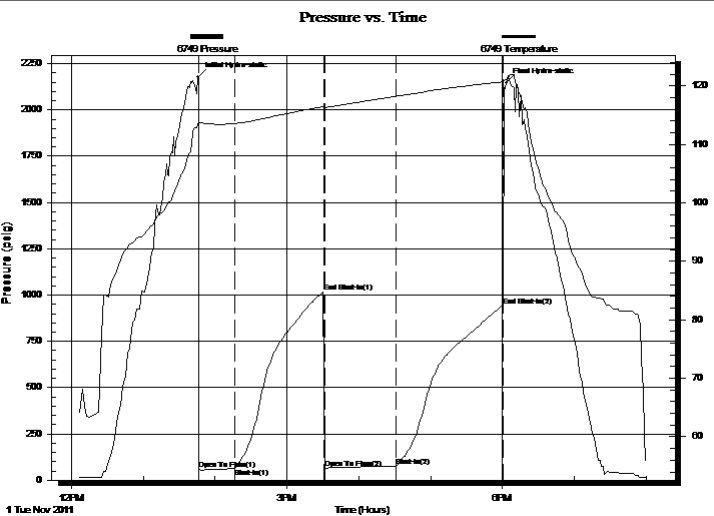
End Time: 20:01:00

Time On Btm: 2011.11.01 @ 13:46:00

Time Off Btm: 2011.11.01 @ 18:03:30

**TEST COMMENT:** 1ST Open 30 Minutes/Good blow/Blow built to bottom of bucket in 20 minutes  
 1ST Shut In 75 Minutes/No blow back  
 2ND Open 60 Minutes/Good blow/Blow built to bottom of bucket in 8 minutes  
 2ND Shut In 90 Minutes/No blow back

## PRESSURE SUMMARY



Time (Min.)	Pressure (psig)	Temp (deg F)	Annotation
0	2180.11	113.84	Initial Hydro-static
1	56.42	113.64	Open To Flow (1)
31	62.31	113.56	Shut-In(1)
105	1014.66	116.48	End Shut-In(1)
106	63.23	116.29	Open To Flow (2)
166	76.12	118.21	Shut-In(2)
255	943.05	120.70	End Shut-In(2)
258	2146.13	121.07	Final Hydro-static

## Recovery

Length (ft)	Description	Volume (bbl)
0.00	600 feet of gas in pipe	0.00
65.00	Oil cut Mud	0.95
0.00	Oil 20% Mud 80%	0.00

## Gas Rates

Choke (inches)	Pressure (psig)	Gas Rate (Mcf/d)



# DRILL STEM TEST REPORT

Trans Pacific Oil Corporation  
 100 South Main  
 Suite 200  
 Wichita, Kansas 67202+3735  
 ATTN: Christina Goodrich

**Dumler Unit A 1-14**

**14/17S/26W/Ness**

Job Ticket: 18792

**DST#: 2**

Test Start: 2011.11.01 @ 12:06:00

## GENERAL INFORMATION:

Formation: **Fort Scott**  
 Deviated: No Whipstock: ft (KB)  
 Test Type: Conventional Bottom Hole (Initial)  
 Time Tool Opened: 13:46:30 Tester: Ken Swinney  
 Time Test Ended: 20:01:00 Unit No: 3325 Great Bend/190  
 Interval: **4376.00 ft (KB) To 4429.00 ft (KB) (TVD)** Reference Elevations: 2591.00 ft (KB)  
 Total Depth: 4429.00 ft (KB) (TVD) 2582.00 ft (CF)  
 Hole Diameter: 7.88 inches Hole Condition: Fair KB to GR/CF: 9.00 ft

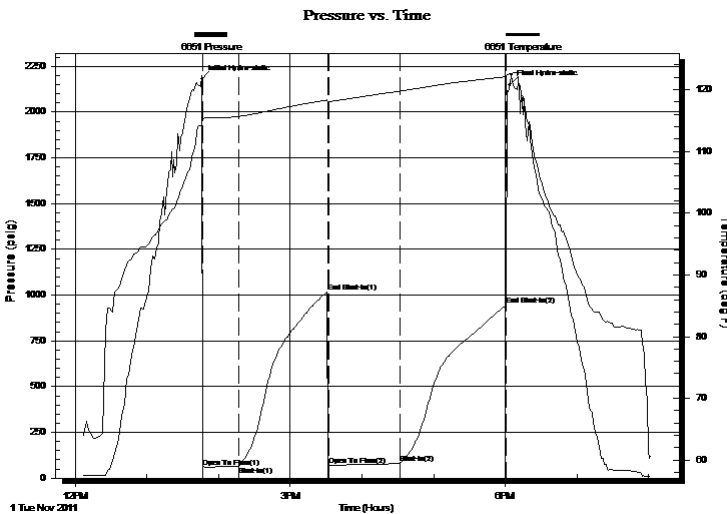
## Serial #: 6651

Inside

Press @ Run Depth: 944.10 psig @ 4424.90 ft (KB) Capacity: 5000.00 psig  
 Start Date: 2011.11.01 End Date: 2011.11.01 Last Calib.: 2011.11.01  
 Start Time: 12:06:00 End Time: 20:01:30 Time On Btm: 2011.11.01 @ 13:46:00  
 Time Off Btm: 2011.11.01 @ 18:03:30

**TEST COMMENT:** 1ST Open 30 Minutes/Good blow/Blow built to bottom of bucket in 20 minutes  
 1ST Shut In 75 Minutes/No blow back  
 2ND Open 60 Minutes/Good blow/Blow built to bottom of bucket in 8 minutes  
 2ND Shut In 90 Minutes/No blow back

## PRESSURE SUMMARY



Time (Min.)	Pressure (psig)	Temp (deg F)	Annotation
0	2180.34	114.98	Initial Hydro-static
1	61.20	114.94	Open To Flow (1)
31	65.47	115.67	Shut-In(1)
105	1016.24	118.36	End Shut-In(1)
106	68.10	118.13	Open To Flow (2)
166	79.45	119.77	Shut-In(2)
255	944.10	122.11	End Shut-In(2)
258	2147.62	122.55	Final Hydro-static

## Recovery

## Gas Rates

Length (ft)	Description	Volume (bbl)
0.00	600 feet of gas in pipe	0.00
65.00	Oil cut Mud	0.95
0.00	Oil 20% Mud 80%	0.00

	Choke (inches)	Pressure (psig)	Gas Rate (Mcf/d)



# DRILL STEM TEST REPORT

**TOOL DIAGRAM**

Trans Pacific Oil Corporation  
 100 South Main  
 Suite 200  
 Wichita, Kansas 67202+3735  
 ATTN: Christina Goodrich

**Dumler Unit A 1-14**  
**14/17S/26W/Ness**  
 Job Ticket: 18792      **DST#: 2**  
 Test Start: 2011.11.01 @ 12:06:00

**Tool Information**

Drill Pipe:	Length: 4386.00 ft	Diameter: 3.88 inches	Volume: 64.14 bbl	Tool Weight: 2000.00 lb
Heavy Wt. Pipe:	Length: 0.00 ft	Diameter: 0.00 inches	Volume: 0.00 bbl	Weight set on Packer: 20000.00 lb
Drill Collar:	Length: 0.00 ft	Diameter: 0.00 inches	Volume: 0.00 bbl	Weight to Pull Loose: 100000.0 lb
			<u>Total Volume: 64.14 bbl</u>	Tool Chased 0.00 ft
Drill Pipe Above KB:	30.00 ft			String Weight: Initial 58000.00 lb
Depth to Top Packer:	4376.00 ft			Final 60000.00 lb
Depth to Bottom Packer:	ft			
Interval between Packers:	52.90 ft			
Tool Length:	72.90 ft			
Number of Packers:	2	Diameter: 6.75 inches		

Tool Comments:

Tool Description	Length (ft)	Serial No.	Position	Depth (ft)	Accum. Lengths
Shut-in tool	5.00			4361.00	
Hydraulic tool	5.00			4366.00	
Packer	5.00			4371.00	20.00      Bottom Of Top Packer
Packer	5.00			4376.00	
Anchor	5.00			4381.00	
change over sub	0.75			4381.75	
drill pipe	31.40			4413.15	
change over sub	0.75			4413.90	
anchor	10.00			4423.90	
Recorder	1.00	6651	Inside	4424.90	
Recorder	1.00	6749	Outside	4425.90	
bull plug	3.00			4428.90	52.90      Bottom Packers & Anchor

**Total Tool Length: 72.90**



# DRILL STEM TEST REPORT

## FLUID SUMMARY

Trans Pacific Oil Corporation

**Dumler Unit A 1-14**

100 South Main  
Suite 200  
Wichita, Kansas 67202+3735  
ATTN: Christina Goodrich

**14/17S/26W/Ness**

Job Ticket: 18792

**DST#: 2**

Test Start: 2011.11.01 @ 12:06:00

### Mud and Cushion Information

Mud Type: Gel Chem  
Mud Weight: 9.00 lb/gal  
Viscosity: 52.00 sec/qt  
Water Loss: 7.19 in<sup>3</sup>  
Resistivity: 6400.00 ohm.m  
Salinity: ppm  
Filter Cake: 1.00 inches

Cushion Type:  
Cushion Length: ft  
Cushion Volume: bbl  
Gas Cushion Type:  
Gas Cushion Pressure: psig

Oil API: deg API  
Water Salinity: ppm

### Recovery Information

Recovery Table

Length ft	Description	Volume bbl
0.00	600 feet of gas in pipe	0.000
65.00	Oil cut Mud	0.951
0.00	Oil 20% Mud 80%	0.000

Total Length: 65.00 ft      Total Volume: 0.951 bbl

Num Fluid Samples: 0

Num Gas Bombs: 0

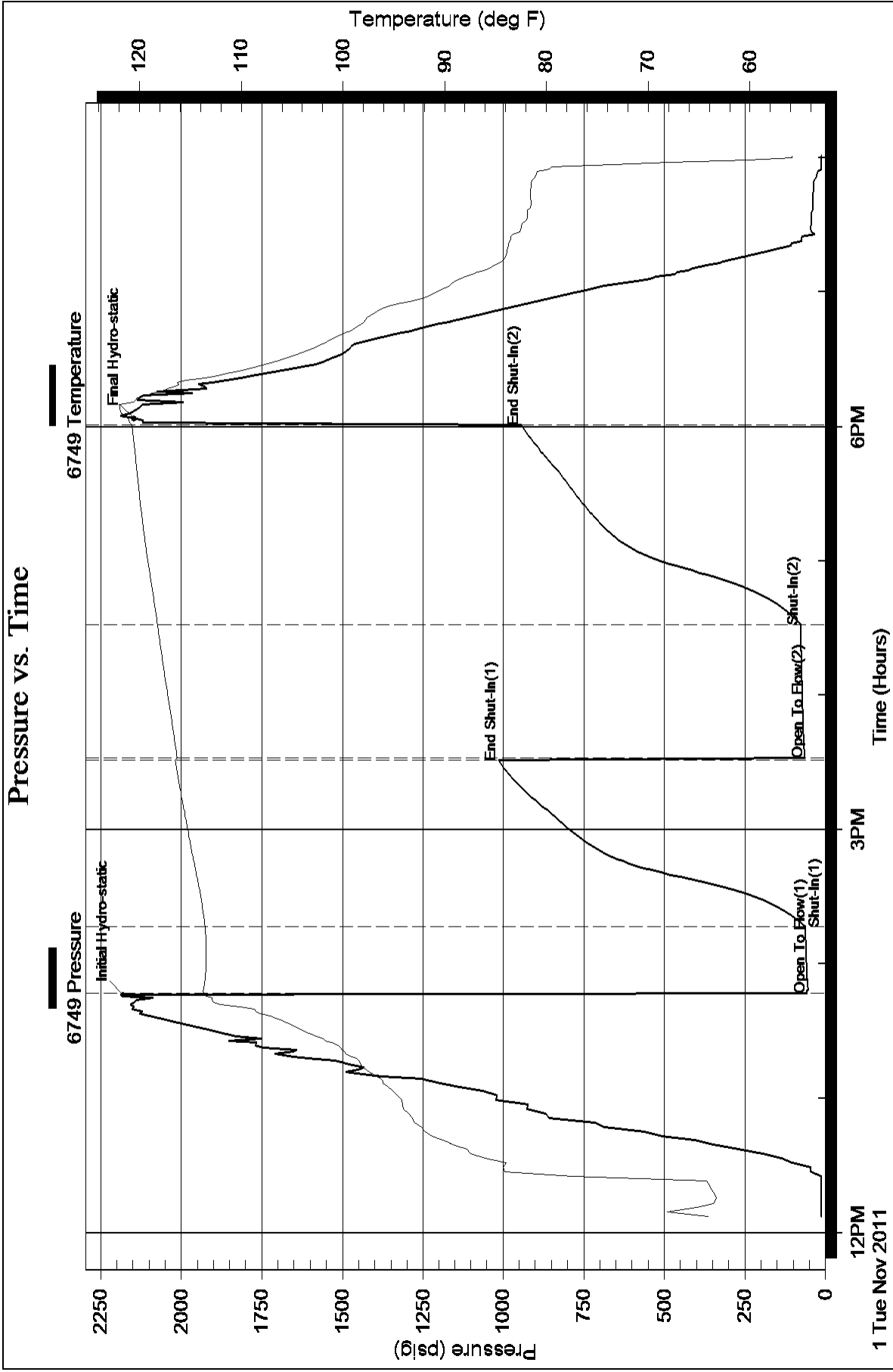
Serial #:

Laboratory Name:

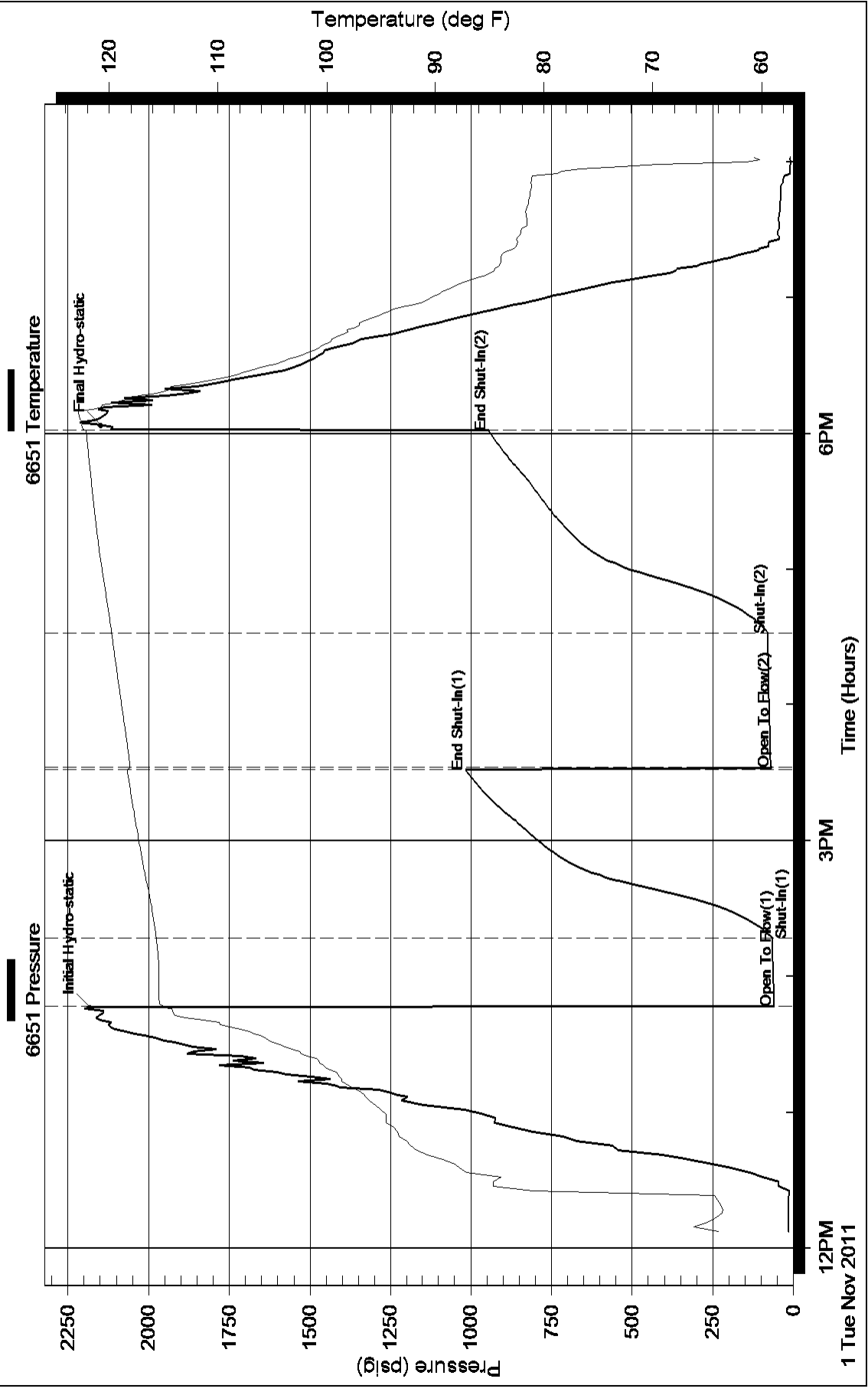
Laboratory Location:

Recovery Comments:

### Pressure vs. Time



# Pressure vs. Time







## DRILL STEM TEST REPORT

Prepared For: **Trans Pacific Oil Corporation**

100 South Main  
Suite 200  
Wichita, Kansas 67202+3735

ATTN: Christina Goodrich

**14/17S/26W/Ness**

**Dumler Unit A 1-14**

Start Date: 2011.11.02 @ 13:01:00

End Date: 2011.11.02 @ 21:10:30

Job Ticket #: 18793                      DST #: 3

Superior Testers Enterprises LLC  
PO Box 138 Great Bend KS 67530  
1-800-792-6902

Printed: 2011.11.02 @ 19:27:26



# DRILL STEM TEST REPORT

Trans Pacific Oil Corporation  
 100 South Main  
 Suite 200  
 Wichita, Kansas 67202+3735  
 ATTN: Christina Goodrich

**Dumler Unit A 1-14**

**14/17S/26W/Ness**

Job Ticket: 18793

**DST#: 3**

Test Start: 2011.11.02 @ 13:01:00

## GENERAL INFORMATION:

Formation: **Mississippi**  
 Deviated: No Whipstock: ft (KB)  
 Time Tool Opened: 14:56:30  
 Time Test Ended: 21:10:30  
 Test Type: Conventional Bottom Hole (Initial)  
 Tester: Ken Swinney  
 Unit No: 3325 Great Bend/190  
 Interval: **4472.00 ft (KB) To 4521.00 ft (KB) (TVD)**  
 Reference Elevations: 2591.00 ft (KB)  
 Total Depth: 4521.00 ft (KB) (TVD) 2582.00 ft (CF)  
 Hole Diameter: 7.88 inches Hole Condition: Fair KB to GR/CF: 9.00 ft

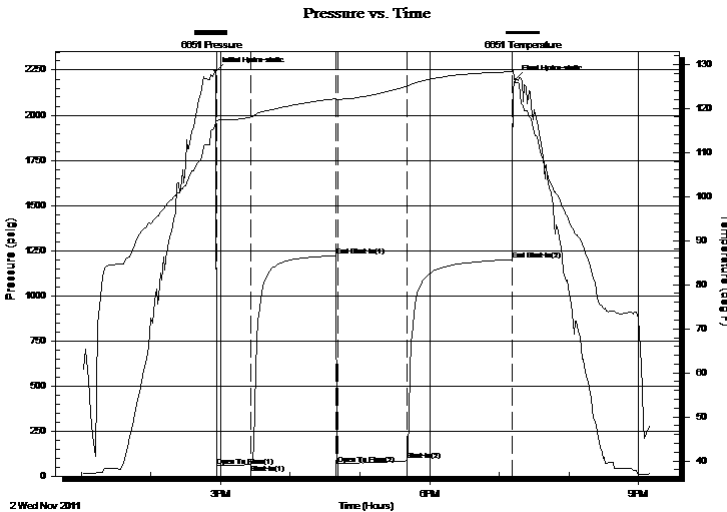
## Serial #: 6651

Inside

Press @ Run Depth: 85.12 psig @ 4517.11 ft (KB) Capacity: 5000.00 psig  
 Start Date: 2011.11.02 End Date: 2011.11.02 Last Calib.: 2011.11.02  
 Start Time: 13:01:00 End Time: 21:10:30 Time On Btm: 2011.11.02 @ 14:55:30  
 Time Off Btm: 2011.11.02 @ 19:14:00

TEST COMMENT: 1ST Open 30 Minutes/Fair blow/Blow built to 4 1/2 inches  
 1ST Shut In 75 Minutes/No blow back  
 2ND Open 60 Minutes/Fair blow/Blow built to 8 inches  
 2ND Shut In 90 Minutes/No blow back

## PRESSURE SUMMARY



Time (Min.)	Pressure (psig)	Temp (deg F)	Annotation
0	2243.52	116.80	Initial Hydro-static
1	56.53	117.16	Open To Flow (1)
31	63.94	118.03	Shut-In(1)
104	1221.81	122.19	End Shut-In(1)
106	68.50	121.99	Open To Flow (2)
166	85.12	124.99	Shut-In(2)
256	1200.14	128.32	End Shut-In(2)
259	2197.20	125.79	Final Hydro-static

## Recovery

Length (ft)	Description	Volume (bbl)
0.00	85 feet gas in pipe	0.00
5.00	Clean oil 100%	0.07
90.00	Oily mud/ Oil 40% Mud 60%	1.32

## Gas Rates

	Choke (inches)	Pressure (psig)	Gas Rate (Mcf/d)



# DRILL STEM TEST REPORT

Trans Pacific Oil Corporation  
 100 South Main  
 Suite 200  
 Wichita, Kansas 67202+3735  
 ATTN: Christina Goodrich

**Dumler Unit A 1-14**

**14/17S/26W/Ness**

Job Ticket: 18793

**DST#: 3**

Test Start: 2011.11.02 @ 13:01:00

## GENERAL INFORMATION:

Formation: **Mississippi**  
 Deviated: No Whipstock: ft (KB)  
 Time Tool Opened: 14:56:30  
 Time Test Ended: 21:10:30  
 Test Type: Conventional Bottom Hole (Initial)  
 Tester: Ken Swinney  
 Unit No: 3325 Great Bend/190  
 Interval: **4472.00 ft (KB) To 4521.00 ft (KB) (TVD)**  
 Reference Elevations: 2591.00 ft (KB)  
 Total Depth: 4521.00 ft (KB) (TVD)  
 2582.00 ft (CF)  
 Hole Diameter: 7.88 inches Hole Condition: Fair  
 KB to GR/CF: 9.00 ft

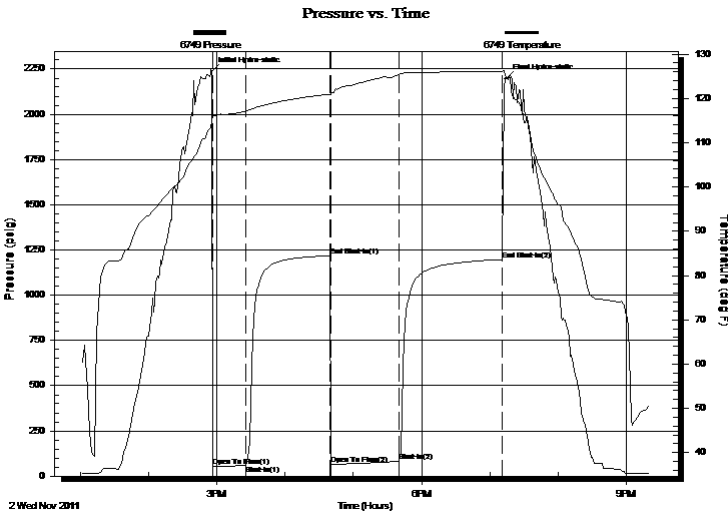
## Serial #: 6749

**Outside**

Press @ Run Depth: 1197.59 psig @ 4518.11 ft (KB) Capacity: 5000.00 psig  
 Start Date: 2011.11.02 End Date: 2011.11.02 Last Calib.: 2011.11.02  
 Start Time: 13:01:00 End Time: 21:21:00 Time On Btm: 2011.11.02 @ 14:55:30  
 Time Off Btm: 2011.11.02 @ 19:14:00

**TEST COMMENT:** 1ST Open 30 Minutes/Fair blow/Blow built to 4 1/2 inches  
 1ST Shut In 75 Minutes/No blow back  
 2ND Open 60 Minutes/Fair blow/Blow built to 8 inches  
 2ND Shut In 90 Minutes/No blow back

## PRESSURE SUMMARY



Time (Min.)	Pressure (psig)	Temp (deg F)	Annotation
0	2238.11	115.03	Initial Hydro-static
1	51.44	115.78	Open To Flow (1)
30	60.30	117.13	Shut-In(1)
104	1218.90	120.94	End Shut-In(1)
105	64.47	120.88	Open To Flow (2)
165	81.51	125.43	Shut-In(2)
256	1197.59	126.14	End Shut-In(2)
259	2196.93	124.88	Final Hydro-static

## Recovery

Length (ft)	Description	Volume (bbl)
0.00	85 feet gas in pipe	0.00
5.00	Clean oil 100%	0.07
90.00	Oily mud/ Oil 40% Mud 60%	1.32

## Gas Rates

	Choke (inches)	Pressure (psig)	Gas Rate (Mcf/d)



# DRILL STEM TEST REPORT

**TOOL DIAGRAM**

Trans Pacific Oil Corporation

**Dumler Unit A 1-14**

100 South Main  
Suite 200  
Wichita, Kansas 67202+3735  
ATTN: Christina Goodrich

**14/17S/26W/Ness**

Job Ticket: 18793

**DST#: 3**

Test Start: 2011.11.02 @ 13:01:00

## Tool Information

Drill Pipe:	Length: 4474.00 ft	Diameter: 3.88 inches	Volume: 65.43 bbl	Tool Weight: 2000.00 lb
Heavy Wt. Pipe:	Length: 0.00 ft	Diameter: 0.00 inches	Volume: 0.00 bbl	Weight set on Packer: 20000.00 lb
Drill Collar:	Length: 0.00 ft	Diameter: 0.00 inches	Volume: 0.00 bbl	Weight to Pull Loose: 68000.00 lb
			<u>Total Volume: 65.43 bbl</u>	Tool Chased 2.00 ft
Drill Pipe Above KB:	22.00 ft			String Weight: Initial 58000.00 lb
Depth to Top Packer:	4472.00 ft			Final 58000.00 lb
Depth to Bottom Packer:	ft			
Interval between Packers:	49.11 ft			
Tool Length:	69.11 ft			
Number of Packers:	2	Diameter: 6.75 inches		

Tool Comments:

Tool Description	Length (ft)	Serial No.	Position	Depth (ft)	Accum. Lengths
Shut-in tool	5.00			4457.00	
Hydraulic tool	5.00			4462.00	
Packer	5.00			4467.00	20.00 Bottom Of Top Packer
Packer	5.00			4472.00	
Anchor	2.00			4474.00	
change over sub	0.75			4474.75	
drill pipe	30.61			4505.36	
change over sub	0.75			4506.11	
anchor	10.00			4516.11	
Recorder	1.00	6651	Inside	4517.11	
Recorder	1.00	6749	Outside	4518.11	
bull plug	3.00			4521.11	49.11 Bottom Packers & Anchor

**Total Tool Length: 69.11**



# DRILL STEM TEST REPORT

## FLUID SUMMARY

Trans Pacific Oil Corporation

**Dumler Unit A 1-14**

100 South Main  
Suite 200  
Wichita, Kansas 67202+3735  
ATTN: Christina Goodrich

**14/17S/26W/Ness**

Job Ticket: 18793

**DST#: 3**

Test Start: 2011.11.02 @ 13:01:00

### Mud and Cushion Information

Mud Type: Gel Chem  
Mud Weight: 9.00 lb/gal  
Viscosity: 59.00 sec/qt  
Water Loss: 6.79 in<sup>3</sup>  
Resistivity: ohm.m  
Salinity: 5800.00 ppm  
Filter Cake: 1.00 inches

Cushion Type:  
Cushion Length: ft  
Cushion Volume: bbl  
Gas Cushion Type:  
Gas Cushion Pressure: psig

Oil API: deg API  
Water Salinity: ppm

### Recovery Information

Recovery Table

Length ft	Description	Volume bbl
0.00	85 feet gas in pipe	0.000
5.00	Clean oil 100%	0.073
90.00	Oily mud/ Oil 40% Mud 60%	1.316

Total Length: 95.00 ft      Total Volume: 1.389 bbl

Num Fluid Samples: 0

Num Gas Bombs: 0

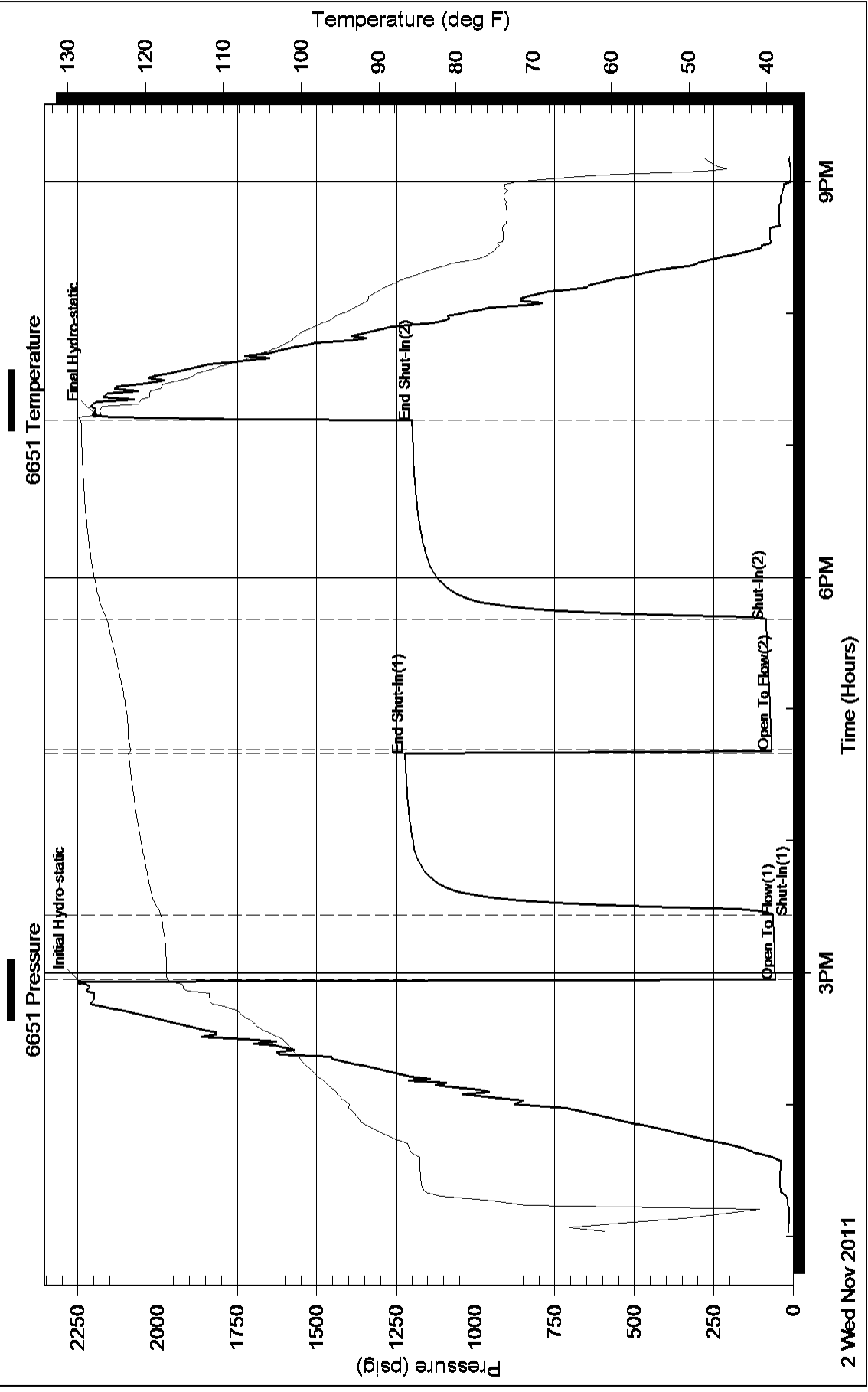
Serial #:

Laboratory Name:

Laboratory Location:

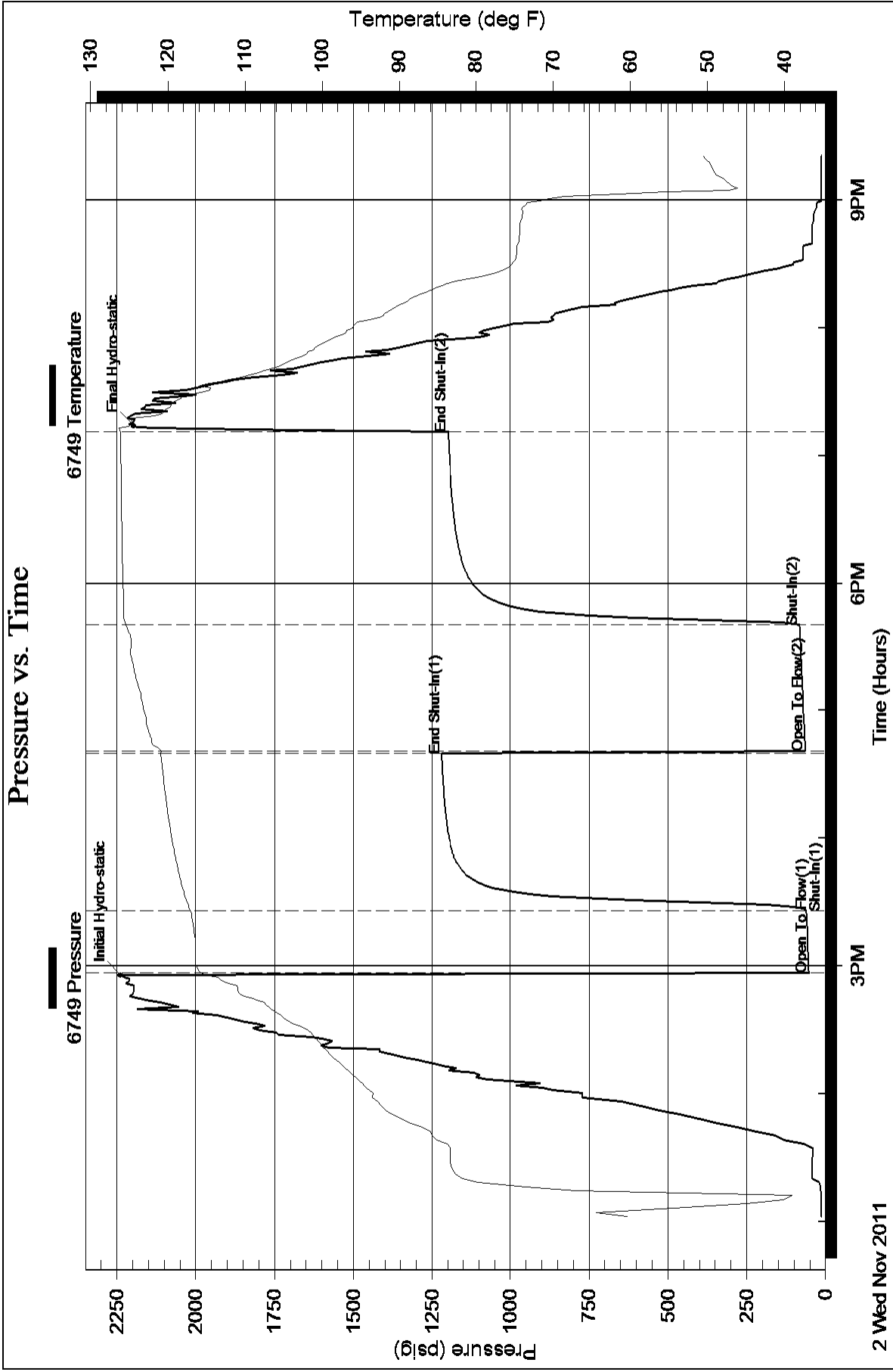
Recovery Comments:

# Pressure vs. Time

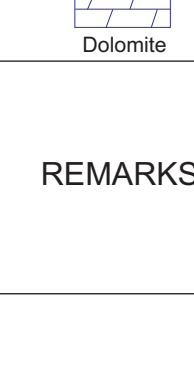


2 Wed Nov 2011

### Pressure vs. Time







**GEOLOGIST'S REPORT**  
**DRILLING TIME AND SAMPLE LOG**

Geologist on Well: Bryce Bidleman & Cristina Goodrich		ELEVATIONS	
LEASE: Dangler Unit - A #1 -14	KB: 2584	DF: 2582	GL: 2575
FIELD: _____	LOCATION: 200' FNL & 670' FWL	SEC: 14	TMPSP: 17S
ROE: _____	STATE: Kansas	CONTRACTOR: Duke Drilling Rig #4	CONTRACTOR: _____
SPUD: 10/26/2011	COMP: 11/03/2011	Measurements are All From Kelly Bushing	
RTD: 4521	LTD: 4521	CONDUCTION	
MUD UP: 3577	TYPE MUD: CHEMICAL	SURFACE: 8.588 @ 222'	PRODUCTION: 4.172 @ 4516'
SAMPLES SAVED FROM: 3800	TO: TD	ELECTRICAL SURVEYS	
DRILLING TIME KEPT FROM: 3800	TO: TD	GEOLOGICAL SUPERVISION FROM: 3800 - TD	
SAMPLES EXAMINED FROM: 3800	TO: TD	Superior CND OIL	
REFERENCE WELL: Dangler U - #2 Hickel	STRUCT: Superior	SUPERIOR TESTERS	
Formation	Sample Tops	E-log Tops	Struct
Anhydrite	1932 (+652)	1934 (+650)	+2
Basic Anhydrite	1965 (+619)	1965 (+619)	1B1
Heebner	3851 (-1267)	3851 (-1271)	-1
Lansing	3894 (-1310)	3894 (-1310)	1B1
Stark Shale	4144 (-1560)	4148 (-1564)	-2
BKC	4207 (-1623)	4208 (-1624)	-3
Marmaton	4232 (-1648)	4235 (-1651)	-4
Fort Scott	4423 (-1839)	4421 (-1817)	1B1
Cherokee Shale	4423 (-1839)	4428 (-1844)	1B1
Missouri Dol	4515 (-1931)	4515 (-1931)	-2

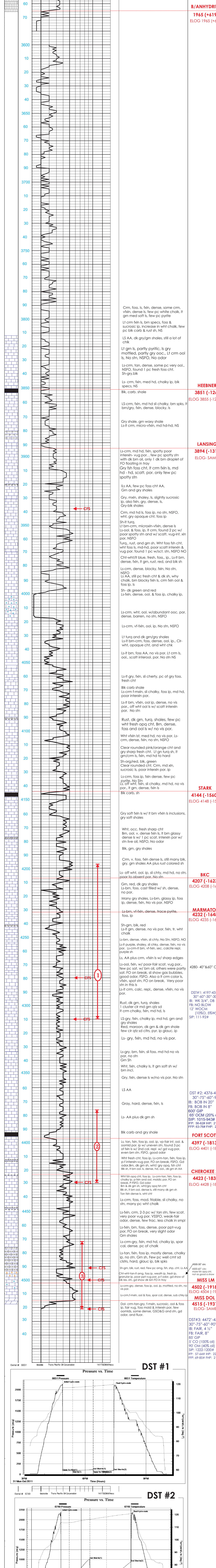
REMARKS Due to the positive test results of DST#3, it was decided to run production casing to further evaluate this well.

Ran 103 its new 4-1/2" 10.5# csw w/backer shoe on bottom and insert baffle in first collar. Tagged bottom pulled up 5' setting packer at 4516' baffle at 4471' P.C. at 1822'.

Ran cmt baskets above pkr shoe and below P.C. Swift pumped 500 gal mud flush followed by 170 sx EA-2 cmt containing 10% salt, 5% caesal, 1/4# flocele, & 1/2% CFR. Plugged rat hole w/30 sx. Plug down 5:30 P.M. 11/3/2011.

Respectfully Submitted,  
 Cristina Goodrich & Bryce Bidleman

DEPTH	DRILLING TIME IN MINUTES PER FOOT	SAMPLE DESCRIPTION	REMARKS
-------	-----------------------------------	--------------------	---------



DST #1 Pressure vs. Time (31 Mar 2011) and DST #2 Pressure vs. Time (1 Tue Nov 2011) and DST #3 Pressure vs. Time (2 Wed Nov 2011)

4800-30' circ  
 4500-60' circ  
 4300-90' circ  
 4100-120' circ  
 3900-150' circ  
 3700-180' circ  
 3500-210' circ  
 3300-240' circ  
 3100-270' circ  
 2900-300' circ  
 2700-330' circ  
 2500-360' circ  
 2300-390' circ  
 2100-420' circ  
 1900-450' circ  
 1700-480' circ  
 1500-510' circ  
 1300-540' circ  
 1100-570' circ  
 900-600' circ  
 700-630' circ  
 500-660' circ  
 300-690' circ  
 100-720' circ  
 0-750' circ

DST #3: 4472'-4521'  
 30"-75"-60"-90"  
 IB: FAIR, 4 1/2"  
 FB: FAIR, 8"  
 85' GIP  
 5' CO (100% oil)  
 90' OM (40% oil)  
 SIP: 1222-1200#  
 IFF: 57-64# IHP: 2244#  
 FFP: 69-85# IHP: 2197#



Conservation Division  
Finney State Office Building  
130 S. Market, Rm. 2078  
Wichita, KS 67202-3802



Phone: 316-337-6200  
Fax: 316-337-6211  
<http://kcc.ks.gov/>

Mark Sievers, Chairman  
Ward Loyd, Commissioner  
Thomas E. Wright, Commissioner

Sam Brownback, Governor

February 02, 2012

Glenna Lowe  
Trans Pacific Oil Corporation  
100 S MAIN STE 200  
WICHITA, KS 67202-3735

Re: ACO1  
API 15-135-25308-00-00  
DUMLER UNIT 'A' 1-14  
NW/4 Sec.14-17S-26W  
Ness County, Kansas

Dear Production Department:

We are herewith requesting that the Well Completion Form ACO-1 and attached information for the subject well be held confidential for a period of two years.

Should you have any questions or need additional information regarding subject well, please contact our office.

Respectfully,  
Glenna Lowe



**JOB LOG**

**SWIFT Services, Inc.**

DATE 3 NOV 11 PAGE NO. 4

CUSTOMER TRANS PACIFIC WELL NO. 1-14 LEASE Dumler A JOB TYPE connect long string TICKET NO. 22435

CHART NO.	TIME	RATE (BPM)	VOLUME (BBL) (GAL)	PUMPS		PRESSURE (PSI)		DESCRIPTION OF OPERATION AND MATERIALS
				T	C	TUBING	CASING	
								200sk EA-2 w/ Floccs 103 joints 10.5" 4 1/2" casing, Part collar #59 1922' RTD 4521' packer shoe 4576' Basket #1, 58 conduits 1, 2, 3, 4, 8, 68 10, 25, 58, 60 shoe jt 4420
	1130							on loc TRR 114
	1325							start 10.5" 4 1/2" casing in well
	1450							circulate joint down - drop ball { try to } - no pressure spike { set packer shoe }
	1645	4	12				200	Pump 500gal mud flush
		4	20				200	Pump 20 bbl KCl flush
			7					Plug RH <del>###</del> <u>30sk</u> <del>20sk</del>
	1655	4 3/4	41				300	mix <del>170sk</del> EA-2 @ 15.3 PPG
	1710							Drop latch down plug wash pump & line
		6 3/4					350	Displace plug
		6 3/4	65				550	
	1730	6 3/4	71				1600	Land plug
								Release pressure to truck - dried up wash truck
	1800							RACK up JOB complete 3V Thanks "Don", Blaine, Rob & Dave

**JOB LOG**

**SWIFT Services, Inc.**

DATE 14 Nov 11 PAGE NO. 1

CUSTOMER Trans Pacific WELL NO. 1-14 LEASE Dum, Lee A JOB TYPE cement port collar TICKET NO. 22440

CHART NO.	TIME	RATE (BPM)	VOLUME (BBL) (GAL)	PUMPS		PRESSURE (PSI)		DESCRIPTION OF OPERATION AND MATERIALS
				T	C	TUBING	CASING	
								300sls SWD w/ #1/4 flaccle 2 3/8 x 4 1/2 DC @ 1922'
	1200							on loc TRK 114
	1217					1000	1000	test to 1000 psi - holding open port collar
	1223	3	3			200		Mix Ester 3bpm @ 200 psi
	1227	4				400		mix SWD cement @ 11.2 ppg
	1231	4	22			500		circ fluid to pit
	1250	4	96			600		cement to surface <u>175 mixed</u> <u>20sls top pit</u>
	1300					1000	1000	close port collar test to 1000 psi - held
	1305							run 4 joints
	1315		20					reverse hole clean 2 cement plugs
								wash truck <u>175 sls mixed</u> <u>20sls top pit</u>
								back up
	1350							job complete
								Thanks Dave, Blaine, & Joe

**RECEIVED**

NOV 16 2011

BY \_\_\_\_\_

**Well:** Dumler A Unit 1-14

**STR :** 14-17S-26W

**Cty:** Ness

**State:** KS

Log Tops:

Anhydrite	1934' ( +650) flat
B/Anhydrite	1965' ( +619) flat
Heebner	3855' (-1271) -1'
Lansing	3894' (-1310) flat
Stark	4150' (-1566) -4'
BKC	4208' (-1624) -4'
Marmaton	4235' (-1651) -3'
Ft. Scott	4401' (-1817) flat
Cherokee Shale	4428' (-1844) -2'
Mississippian	4504' (-1920) -3'
Mississippi Dolomite	4515' (-1931) -2'
RTD	4521' (-1937)