



Confidentiality Requested:

Yes No

KANSAS CORPORATION COMMISSION 1074923
OIL & GAS CONSERVATION DIVISION

Form ACO-1

August 2013

Form must be Typed
Form must be Signed
All blanks must be Filled

WELL COMPLETION FORM
WELL HISTORY - DESCRIPTION OF WELL & LEASE

OPERATOR: License # _____

Name: _____

Address 1: _____

Address 2: _____

City: _____ State: _____ Zip: _____ + _____

Contact Person: _____

Phone: (_____) _____

CONTRACTOR: License # _____

Name: _____

Wellsite Geologist: _____

Purchaser: _____

Designate Type of Completion:

- New Well Re-Entry Workover
- Oil WSW SWD SIOW
- Gas D&A ENHR SIGW
- OG GSW Temp. Abd.
- CM (Coal Bed Methane)
- Cathodic Other (Core, Expl., etc.): _____

If Workover/Re-entry: Old Well Info as follows:

Operator: _____

Well Name: _____

Original Comp. Date: _____ Original Total Depth: _____

- Deepening Re-perf. Conv. to ENHR Conv. to SWD
- Plug Back Conv. to GSW Conv. to Producer
- Commingled Permit #: _____
- Dual Completion Permit #: _____
- SWD Permit #: _____
- ENHR Permit #: _____
- GSW Permit #: _____

Spud Date or Recompletion Date	Date Reached TD	Completion Date or Recompletion Date
-----------------------------------	-----------------	---

API No. 15 - _____

Spot Description: _____

_____ - _____ - _____ Sec. _____ Twp. _____ S. R. _____ East West

_____ Feet from North / South Line of Section

_____ Feet from East / West Line of Section

Footages Calculated from Nearest Outside Section Corner:

- NE NW SE SW

GPS Location: Lat: _____, Long: _____
(e.g. xx.xxxxx) (e.g. -xxx.xxxxx)

Datum: NAD27 NAD83 WGS84

County: _____

Lease Name: _____ Well #: _____

Field Name: _____

Producing Formation: _____

Elevation: Ground: _____ Kelly Bushing: _____

Total Vertical Depth: _____ Plug Back Total Depth: _____

Amount of Surface Pipe Set and Cemented at: _____ Feet

Multiple Stage Cementing Collar Used? Yes No

If yes, show depth set: _____ Feet

If Alternate II completion, cement circulated from: _____

feet depth to: _____ w/ _____ sx cmt.

Drilling Fluid Management Plan

(Data must be collected from the Reserve Pit)

Chloride content: _____ ppm Fluid volume: _____ bbls

Dewatering method used: _____

Location of fluid disposal if hauled offsite:

Operator Name: _____

Lease Name: _____ License #: _____

Quarter _____ Sec. _____ Twp. _____ S. R. _____ East West

County: _____ Permit #: _____

AFFIDAVIT

I am the affiant and I hereby certify that all requirements of the statutes, rules and regulations promulgated to regulate the oil and gas industry have been fully complied with and the statements herein are complete and correct to the best of my knowledge.

Submitted Electronically

KCC Office Use ONLY

- Confidentiality Requested
Date: _____
- Confidential Release Date: _____
- Wireline Log Received
- Geologist Report Received
- UIC Distribution
- ALT I II III Approved by: _____ Date: _____

1074923

Operator Name: _____ Lease Name: _____ Well #: _____

Sec. _____ Twp. _____ S. R. _____ East West County: _____

INSTRUCTIONS: Show important tops of formations penetrated. Detail all cores. Report all final copies of drill stems tests giving interval tested, time tool open and closed, flowing and shut-in pressures, whether shut-in pressure reached static level, hydrostatic pressures, bottom hole temperature, fluid recovery, and flow rates if gas to surface test, along with final chart(s). Attach extra sheet if more space is needed.

Final Radioactivity Log, Final Logs run to obtain Geophysical Data and Final Electric Logs must be emailed to kcc-well-logs@kcc.ks.gov. Digital electronic log files must be submitted in LAS version 2.0 or newer AND an image file (TIFF or PDF).

Drill Stem Tests Taken <i>(Attach Additional Sheets)</i>	<input type="checkbox"/> Yes <input type="checkbox"/> No	<input type="checkbox"/> Log	Formation (Top), Depth and Datum	<input type="checkbox"/> Sample
Samples Sent to Geological Survey	<input type="checkbox"/> Yes <input type="checkbox"/> No	Name	Top	Datum
Cores Taken	<input type="checkbox"/> Yes <input type="checkbox"/> No			
Electric Log Run	<input type="checkbox"/> Yes <input type="checkbox"/> No			
List All E. Logs Run:				

CASING RECORD <input type="checkbox"/> New <input type="checkbox"/> Used							
Report all strings set-conductor, surface, intermediate, production, etc.							
Purpose of String	Size Hole Drilled	Size Casing Set (In O.D.)	Weight Lbs. / Ft.	Setting Depth	Type of Cement	# Sacks Used	Type and Percent Additives

ADDITIONAL CEMENTING / SQUEEZE RECORD				
Purpose:	Depth Top Bottom	Type of Cement	# Sacks Used	Type and Percent Additives
<input type="checkbox"/> Perforate				
<input type="checkbox"/> Protect Casing				
<input type="checkbox"/> Plug Back TD				
<input type="checkbox"/> Plug Off Zone				

Did you perform a hydraulic fracturing treatment on this well? Yes No *(If No, skip questions 2 and 3)*

Does the volume of the total base fluid of the hydraulic fracturing treatment exceed 350,000 gallons? Yes No *(If No, skip question 3)*

Was the hydraulic fracturing treatment information submitted to the chemical disclosure registry? Yes No *(If No, fill out Page Three of the ACO-1)*

Shots Per Foot	PERFORATION RECORD - Bridge Plugs Set/Type Specify Footage of Each Interval Perforated	Acid, Fracture, Shot, Cement Squeeze Record <i>(Amount and Kind of Material Used)</i>	Depth

TUBING RECORD: Size: _____ Set At: _____ Packer At: _____ Liner Run: Yes No

Date of First, Resumed Production, SWD or ENHR: _____ Producing Method: Flowing Pumping Gas Lift Other *(Explain)* _____

Estimated Production Per 24 Hours	Oil Bbls.	Gas Mcf	Water Bbls.	Gas-Oil Ratio	Gravity

DISPOSITION OF GAS: <input type="checkbox"/> Vented <input type="checkbox"/> Sold <input type="checkbox"/> Used on Lease <i>(If vented, Submit ACO-18.)</i>	METHOD OF COMPLETION: <input type="checkbox"/> Open Hole <input type="checkbox"/> Perf. <input type="checkbox"/> Dually Comp. <input type="checkbox"/> Commingled <i>(Submit ACO-5)</i> <i>(Submit ACO-4)</i> <input type="checkbox"/> Other <i>(Specify)</i> _____	PRODUCTION INTERVAL: _____ _____
--	---	---

Form	ACO1 - Well Completion
Operator	F. G. Holl Company L.L.C.
Well Name	BELL 'B' 1-7
Doc ID	1074923

All Electric Logs Run

CDL/CNL
DIL
Microresistivity
BHCS
CPI
Sector Bond/Gamma Ray/ CCL

Form	ACO1 - Well Completion
Operator	F. G. Holl Company L.L.C.
Well Name	BELL 'B' 1-7
Doc ID	1074923

Tops

Name	Top	Datum
Herrington	2179	-257
Winfield	2239	-317
Towanda	2304	-382
Ft Riley	2349	-427
B/Florence	2444	-522
Council Grove	2516	-594
Stotler	3133	-1211
Tarkio	3185	-1263
Heebner	3816	-1894
Brown Lime	3996	-2074
BKC	4405	-2483
Marmaton	4409	-2487
Mississippi	4473	-2551
Viola	4563	-2641
Simpson Shale	4683	-2761
Simpson Sand	4690	-2768
Arbuckle	4760	-2838
RTD	4900	-2978

Conservation Division
Finney State Office Building
130 S. Market, Rm. 2078
Wichita, KS 67202-3802



Phone: 316-337-6200
Fax: 316-337-6211
<http://kcc.ks.gov/>

Mark Sievers, Chairman
Ward Loyd, Commissioner
Thomas E. Wright, Commissioner

Sam Brownback, Governor

February 22, 2012

F. G. Holl Company L.L.C.
9431 E CENTRAL STE 100
WICHITA, KS 67206-2563

Re: ACO1
API 15-007-23837-00-00
BELL 'B' 1-7
SW/4 Sec.07-30S-13W
Barber County, Kansas

Dear Production Department:

We are herewith requesting that the Well Completion Form ACO-1 and attached information for the subject well be held confidential for a period of two years.

Should you have any questions or need additional information regarding subject well, please contact our office.

Respectfully,



DRILL STEM TEST REPORT

Prepared For: **F G Holl Oil Company**

9431 East Central Suite 100
Wichita, Kansas
67206+2583

ATTN: Rene Husted

Bell " B " #1-7

7/30S/13W Barber Co.

Start Date: 2012.02.11 @ 12:15:00

End Date: 2012.02.11 @ 20:28:00

Job Ticket #: 18834 DST #: 1

Superior Testers Enterprises LLC
PO Box 138 Great Bend KS 67530
1-800-792-6902

Printed: 2012.02.11 @ 18:43:15

F G Holl Oil Company
7/30S/13W Barber Co.
Bell " B " #1-7
DST # 1
Mississippi
2012.02.11



DRILL STEM TEST REPORT

TOOL DIAGRAM

F G Holl Oil Company

7/30S/13W Barber Co.

9431 East Central Suite 100
 Wichita, Kansas
 67206+2583
 ATTN: Rene Husted

Bell " B " #1-7

Job Ticket: 18834

DST#: 1

Test Start: 2012.02.11 @ 12:15:00

Tool Information

Drill Pipe:	Length: 4439.00 ft	Diameter: 3.80 inches	Volume: 62.27 bbl	Tool Weight: 2000.00 lb
Heavy Wt. Pipe:	Length: 0.00 ft	Diameter: 0.00 inches	Volume: 0.00 bbl	Weight set on Packer: 20000.00 lb
Drill Collar:	Length: 0.00 ft	Diameter: 2.25 inches	Volume: 0.00 bbl	Weight to Pull Loose: 23000.00 lb
			<u>Total Volume: 62.27 bbl</u>	Tool Chased 0.00 ft
Drill Pipe Above KB:	7.00 ft			String Weight: Initial 58000.00 lb
Depth to Top Packer:	4452.00 ft			Final 58000.00 lb
Depth to Bottom Packer:	ft			
Interval between Packers:	62.27 ft			
Tool Length:	82.27 ft			
Number of Packers:	2	Diameter: 6.75 inches		

Tool Comments:

Tool Description	Length (ft)	Serial No.	Position	Depth (ft)	Accum. Lengths
Shut-In Tool	5.00			4437.00	
Hydraulic Tool	5.00			4442.00	
Packer	5.00			4447.00	20.00 Bottom Of Top Packer
Packer	5.00			4452.00	
Anchor	6.00			4458.00	
Change Over Sub	0.75			4458.75	
Drill Pipe	31.77			4490.52	
Change Over Sub	0.75			4491.27	
Anchor	18.00			4509.27	
Recorder	1.00	6731	Inside	4510.27	
Recorder	1.00	6666	Outside	4511.27	
Bull Plug	3.00			4514.27	62.27 Bottom Packers & Anchor

Total Tool Length: 82.27



DRILL STEM TEST REPORT

FLUID SUMMARY

F G Holl Oil Company

7/30S/13W Barber Co.

9431 East Central Suite 100
Wichita, Kansas
67206+2583
ATTN: Rene Husted

Bell " B " #1-7

Job Ticket: 18834

DST#: 1

Test Start: 2012.02.11 @ 12:15:00

Mud and Cushion Information

Mud Type: Gel Chem

Mud Weight: 9.00 lb/gal

Viscosity: 60.00 sec/qt

Water Loss: 8.80 in³

Resistivity: ohm.m

Salinity: 6000.00 ppm

Filter Cake: 1.00 inches

Cushion Type:

Cushion Length: ft

Cushion Volume: bbl

Gas Cushion Type:

Gas Cushion Pressure: psia

Oil API:

Water Salinity: deg API

ppm

Recovery Information

Recovery Table

Length ft	Description	Volume bbl
15.00	Drilling Mud 100%	0.210

Total Length: 15.00 ft Total Volume: 0.210 bbl

Num Fluid Samples: 0

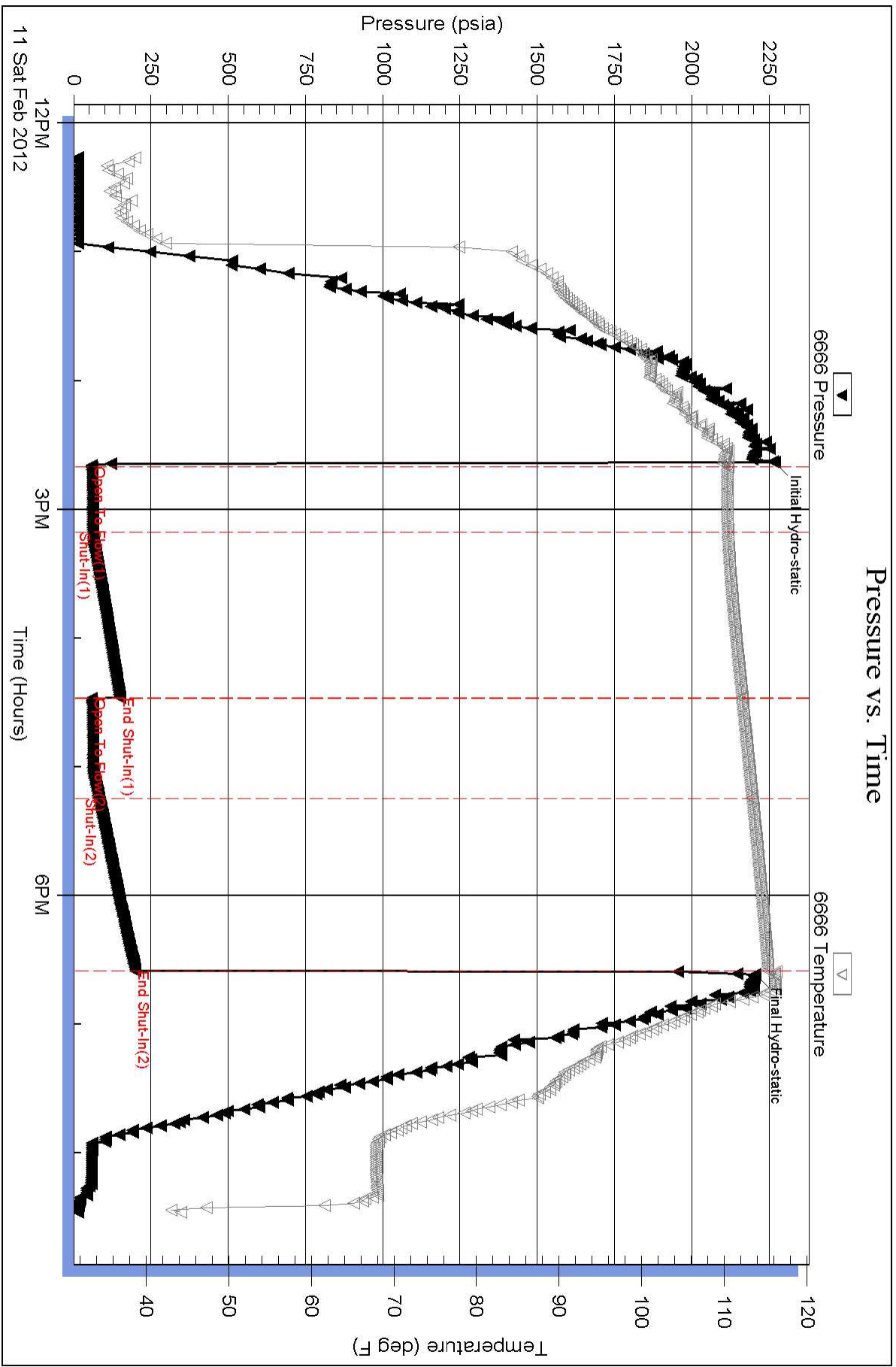
Num Gas Bombs: 0

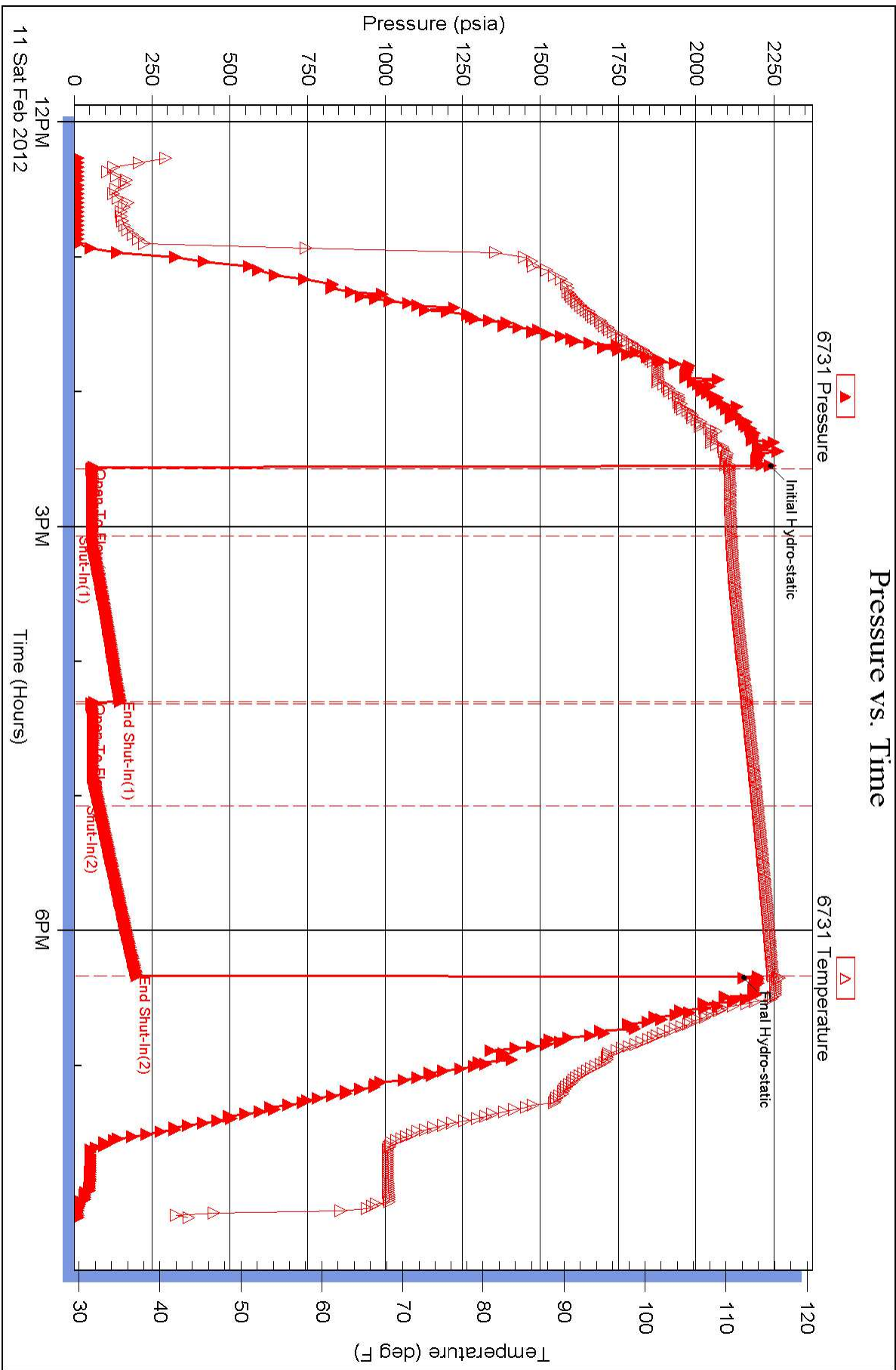
Serial #:

Laboratory Name:

Laboratory Location:

Recovery Comments: Thank you for the work. See u next time







DRILL STEM TEST REPORT

Prepared For: **F G Holl Oil Company**

9431 East Central Suite 100
Wichita, Kansas
67206+2583

ATTN: Rene Husted

Bell " B " #1-7

7/30S/13W Barber Co.

Start Date: 2012.02.12 @ 12:13:00

End Date: 2012.02.12 @ 19:14:00

Job Ticket #: 18835 DST #: 2

Superior Testers Enterprises LLC
PO Box 138 Great Bend KS 67530
1-800-792-6902

Printed: 2012.02.12 @ 17:28:51



DRILL STEM TEST REPORT

F G Holl Oil Company
 9431 East Central Suite 100
 Wichita, Kansas
 67206+2583
 ATTN: Rene Husted

7/30S/13W Barber Co.
Bell " B " #1-7
 Job Ticket: 18835 **DST#: 2**
 Test Start: 2012.02.12 @ 12:13:00

GENERAL INFORMATION:

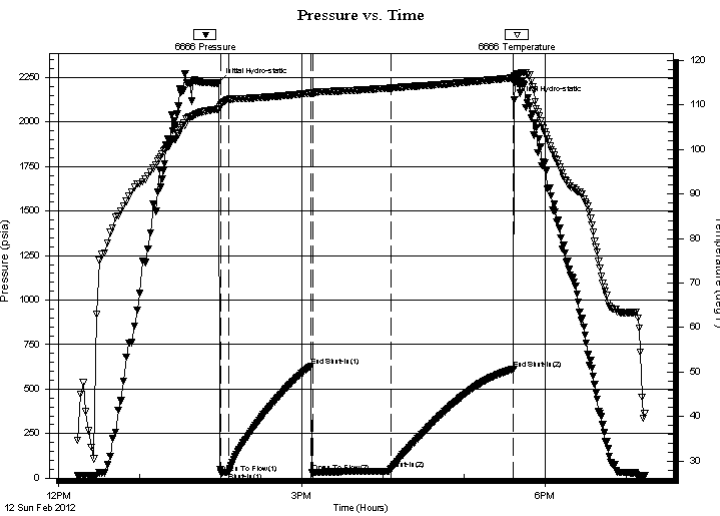
Formation: **Viola**
 Deviated: No Whipstock: ft (KB)
 Time Tool Opened: 14:00:00
 Time Test Ended: 19:14:00
 Test Type: Conventional Bottom Hole (Initial)
 Tester: Dylan E Ellis
 Unit No: 3345/Great Bend/142
 Interval: **4568.00 ft (KB) To 4580.00 ft (KB) (TVD)**
 Total Depth: 4580.00 ft (KB) (TVD)
 Reference Elevations: 1922.00 ft (KB)
 1911.00 ft (CF)
 Hole Diameter: 7.88 inches Hole Condition: Fair
 KB to GR/CF: 11.00 ft

Serial #: 6666

Outside

Press @ Run Depth: 51.77 psia @ 4577.00 ft (KB) Capacity: 5000.00 psia
 Start Date: 2012.02.12 End Date: 2012.02.12 Last Calib.: 2012.02.12
 Start Time: 12:13:00 End Time: 19:14:00 Time On Btm: 2012.02.12 @ 13:58:30
 Time Off Btm: 2012.02.12 @ 17:37:00

TEST COMMENT: 1ST Opening 5 Minutes steady building blow /blow blew to bottom of bucket in 5 minutes
 1ST Shut-In 60 Minutes yes surface blow back weak
 2ND Opening 45 Minutes very strong blow /blow blow bottom of bucket instantly
 2ND Shut-In 90 Minutes yes weak surface blow back



PRESSURE SUMMARY

Time (Min.)	Pressure (psia)	Temp (deg F)	Annotation
0	2221.10	109.08	Initial Hydro-static
2	29.13	110.06	Open To Flow (1)
7	31.57	111.22	Shut-In(1)
68	628.96	112.66	End Shut-In(1)
70	30.96	112.64	Open To Flow (2)
128	51.77	113.78	Shut-In(2)
218	613.07	116.08	End Shut-In(2)
219	2122.56	116.43	Final Hydro-static

Recovery

Length (ft)	Description	Volume (bbl)
15.00	Very lightly Oil spotted Mud-99%	0.21
0.00	350' Gas in the pipe	0.00

Gas Rates

Choke (inches)	Pressure (psia)	Gas Rate (Mcf/d)



DRILL STEM TEST REPORT

TOOL DIAGRAM

F G Holl Oil Company

7/30S/13W Barber Co.

9431 East Central Suite 100
 Wichita, Kansas
 67206+2583
 ATTN: Rene Husted

Bell " B " #1-7

Job Ticket: 18835

DST#: 2

Test Start: 2012.02.12 @ 12:13:00

Tool Information

Drill Pipe:	Length: 4549.00 ft	Diameter: 3.80 inches	Volume: 63.81 bbl	Tool Weight: 2000.00 lb
Heavy Wt. Pipe:	Length: 0.00 ft	Diameter: 0.00 inches	Volume: 0.00 bbl	Weight set on Packer: 20000.00 lb
Drill Collar:	Length: 0.00 ft	Diameter: 2.25 inches	Volume: 0.00 bbl	Weight to Pull Loose: 9000.00 lb
			<u>Total Volume: 63.81 bbl</u>	Tool Chased 4.00 ft
Drill Pipe Above KB:	9.00 ft			String Weight: Initial 59000.00 lb
Depth to Top Packer:	4568.00 ft			Final 60000.00 lb
Depth to Bottom Packer:	ft			
Interval between Packers:	12.00 ft			
Tool Length:	40.00 ft			
Number of Packers:	2	Diameter: 6.75 inches		

Tool Comments: The second open was acting as if it were surging after i bleed it off and closed it to build again

Tool Description	Length (ft)	Serial No.	Position	Depth (ft)	Accum. Lengths
Shut-In Tool	5.00			4545.00	
Hydraulic Tool	5.00			4550.00	
Jars	6.00			4556.00	
Safety Joint	2.00			4558.00	
Packer	5.00			4563.00	28.00 Bottom Of Top Packer
Packer	5.00			4568.00	
Anchor	7.00			4575.00	
Recorder	1.00	6731	Inside	4576.00	
Recorder	1.00	6666	Outside	4577.00	
Bull Plug	3.00			4580.00	12.00 Bottom Packers & Anchor
Total Tool Length:	40.00				



DRILL STEM TEST REPORT

FLUID SUMMARY

F G Holl Oil Company

7/30S/13W Barber Co.

9431 East Central Suite 100
Wichita, Kansas
67206+2583
ATTN: Rene Husted

Bell " B " #1-7

Job Ticket: 18835

DST#: 2

Test Start: 2012.02.12 @ 12:13:00

Mud and Cushion Information

Mud Type: Gel Chem
Mud Weight: 9.00 lb/gal
Viscosity: 49.00 sec/qt
Water Loss: 8.80 in³
Resistivity: ohm.m
Salinity: 4000.00 ppm
Filter Cake: 1.00 inches

Cushion Type:
Cushion Length: ft
Cushion Volume: bbl
Gas Cushion Type:
Gas Cushion Pressure: psia

Oil API: deg API
Water Salinity: ppm

Recovery Information

Recovery Table

Length ft	Description	Volume bbl
15.00	Very lightly Oil spotted Mud-99%	0.210
0.00	350' Gas in the pipe	0.000

Total Length: 15.00 ft Total Volume: 0.210 bbl

Num Fluid Samples: 0

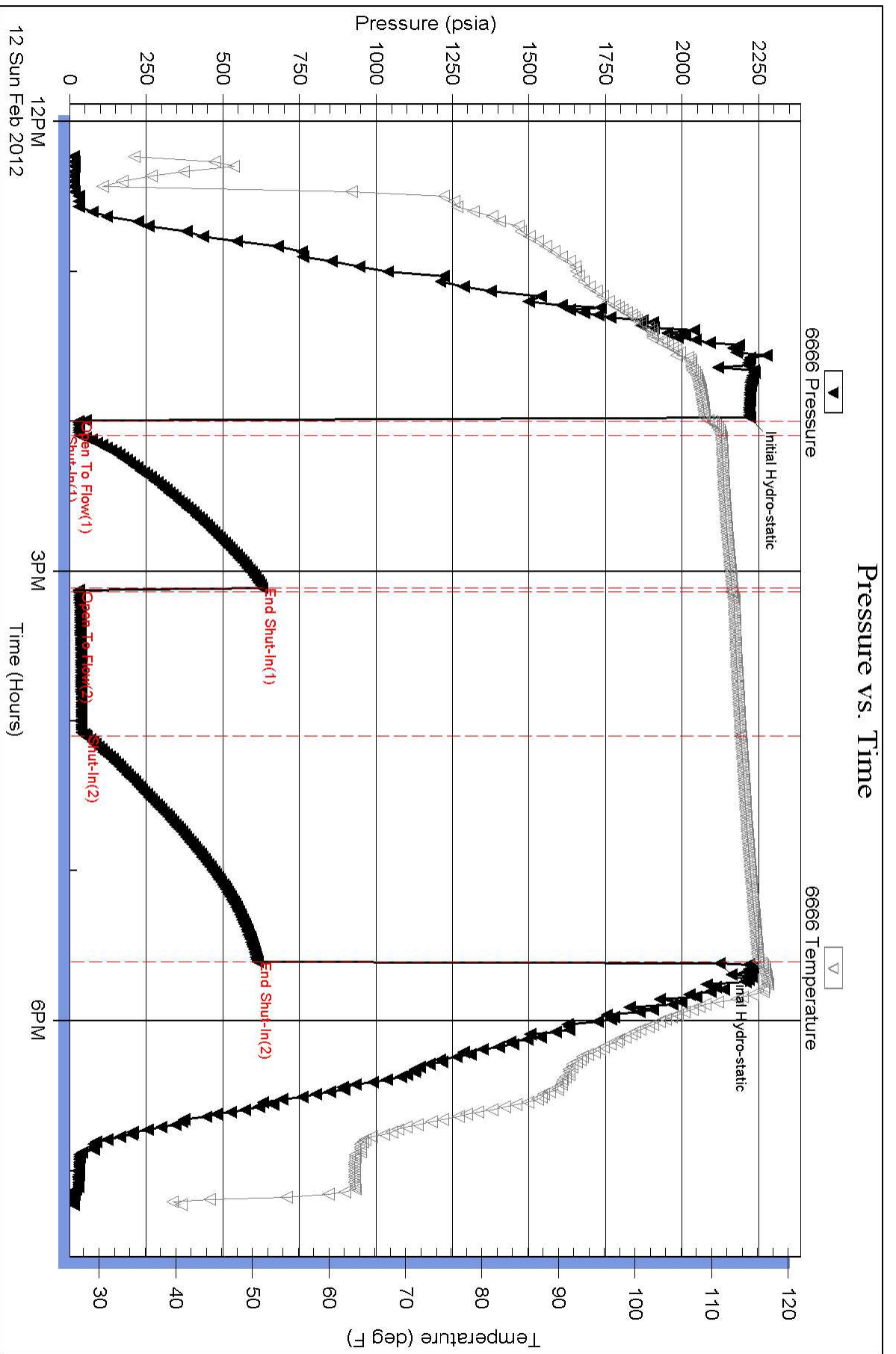
Num Gas Bombs: 0

Serial #:

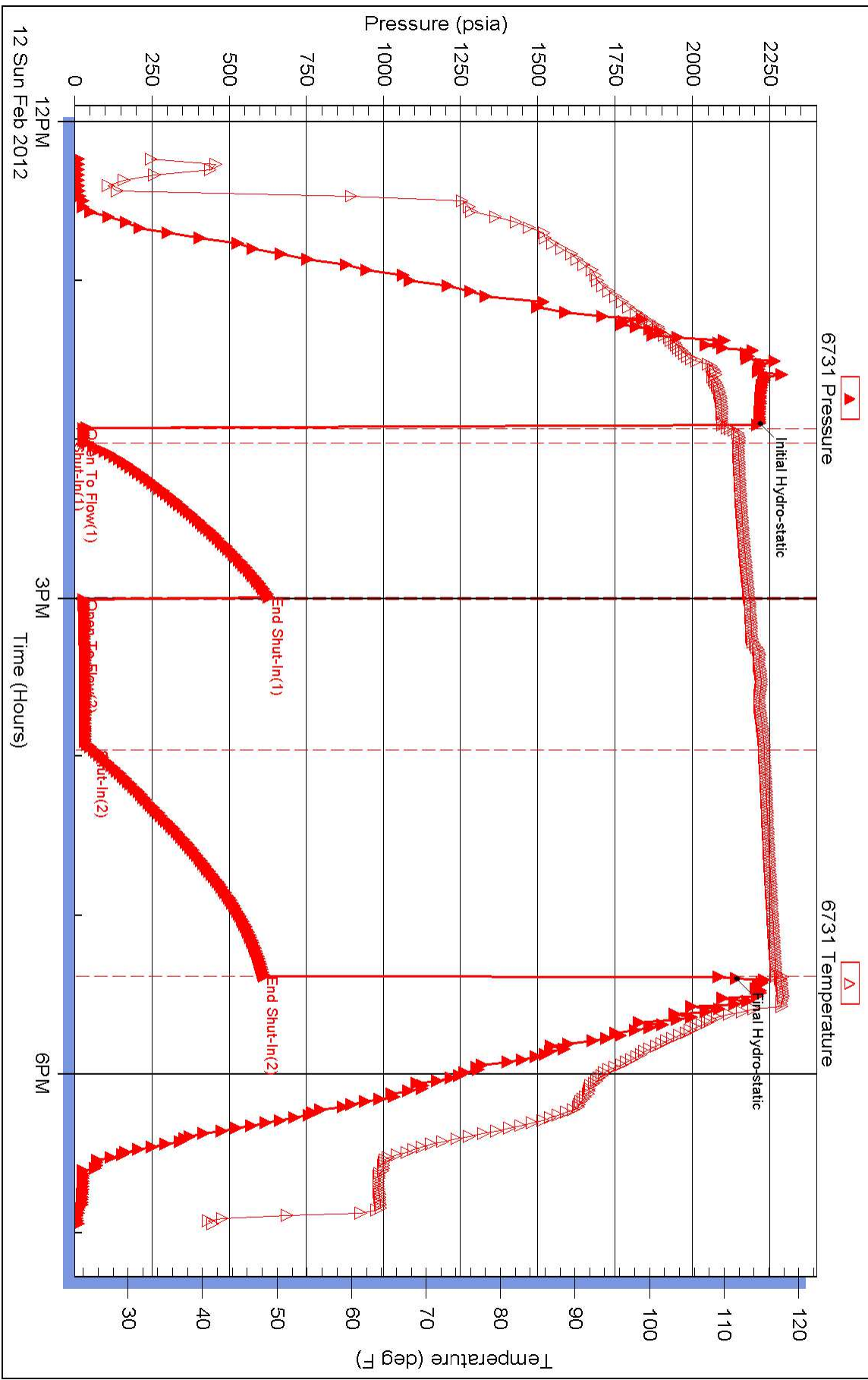
Laboratory Name:

Laboratory Location:

Recovery Comments:



Pressure vs. Time





DRILL STEM TEST REPORT

Prepared For: **F G Holl Oil Company**

9431 East Central Suite 100
Wichita, Kansas
67206+2583

ATTN: Rene Husted

Bell " B " #1-7

7/30S/13W Barber Co.

Start Date: 2012.02.13 @ 04:47:00

End Date: 2012.02.13 @ 12:28:30

Job Ticket #: 18836 DST #: 3

Superior Testers Enterprises LLC
PO Box 138 Great Bend KS 67530
1-800-792-6902

Printed: 2012.02.13 @ 10:41:43



DRILL STEM TEST REPORT

F G Holl Oil Company
 9431 East Central Suite 100
 Wichita, Kansas
 67206+2583
 ATTN: Rene Husted

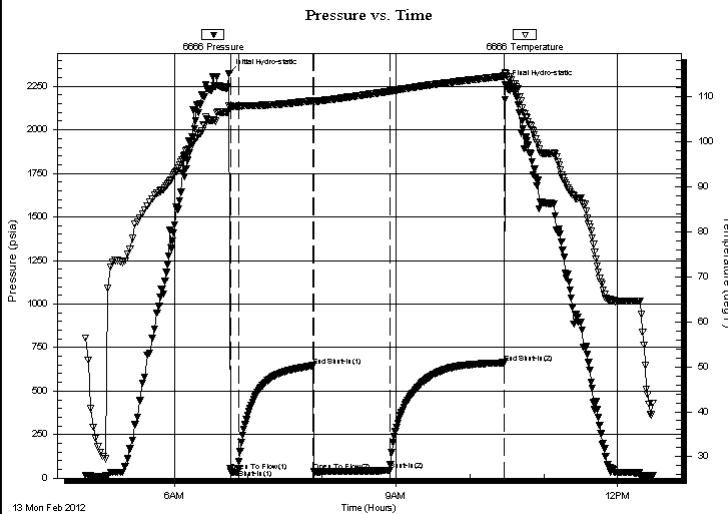
7/30S/13W Barber Co.
Bell " B " #1-7
 Job Ticket: 18836 **DST#: 3**
 Test Start: 2012.02.13 @ 04:47:00

GENERAL INFORMATION:

Formation: **Viola**
 Deviated: No Whipstock: ft (KB)
 Test Type: Conventional Bottom Hole (Initial)
 Time Tool Opened: 06:46:00 Tester: Dylan E Ellis
 Time Test Ended: 12:28:30 Unit No: 3345/Great Bend/142
 Interval: **4581.00 ft (KB) To 4600.00 ft (KB) (TVD)** Reference Elevations: 1922.00 ft (KB)
 Total Depth: 4600.00 ft (KB) (TVD) 1911.00 ft (CF)
 Hole Diameter: 7.88 inches Hole Condition: Fair KB to GR/CF: 11.00 ft

Serial #: 6666 Outside
 Press @ Run Depth: 43.32 psia @ 4597.00 ft (KB) Capacity: 5000.00 psia
 Start Date: 2012.02.13 End Date: 2012.02.13 Last Calib.: 2012.02.13
 Start Time: 04:47:00 End Time: 12:28:30 Time On Btm: 2012.02.13 @ 06:44:30
 Time Off Btm: 2012.02.13 @ 10:29:00

TEST COMMENT: 1ST Opening 5 Minutes very strong blow /blow blew to bottom of bucket in 15 seconds
 1ST Shut-In 60 Minutes no blow back
 2ND Opening 45 Minutes very very strong blow /blow blew to bottom of bucket instantly/gas to surface in 15 mins.
 2ND Shut-In 90 Minutes yes very weak surface blow back



PRESSURE SUMMARY

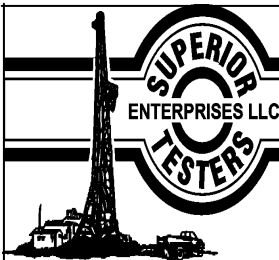
Time (Min.)	Pressure (psia)	Temp (deg F)	Annotation
0	2325.07	107.95	Initial Hydro-static
2	39.69	107.88	Open To Flow (1)
8	53.11	107.89	Shut-In(1)
68	645.78	109.13	End Shut-In(1)
69	36.58	108.98	Open To Flow (2)
131	43.32	111.19	Shut-In(2)
224	663.14	114.59	End Shut-In(2)
225	2257.95	115.05	Final Hydro-static

Recovery

Length (ft)	Description	Volume (bbl)
40.00	Mud cut Oil	0.56
0.00	40% Mud 60% Oil	0.00
0.00	Max gas gauged w as 2,000.0 mCf a day	0.00

Gas Rates

	Choke (inches)	Pressure (psia)	Gas Rate (Mcf/d)
First Gas Rate	0.13	3.00	1.12
Last Gas Rate	0.13	5.60	2.10



DRILL STEM TEST REPORT

F G Holl Oil Company
 9431 East Central Suite 100
 Wichita, Kansas
 67206+2583
 ATTN: Rene Husted

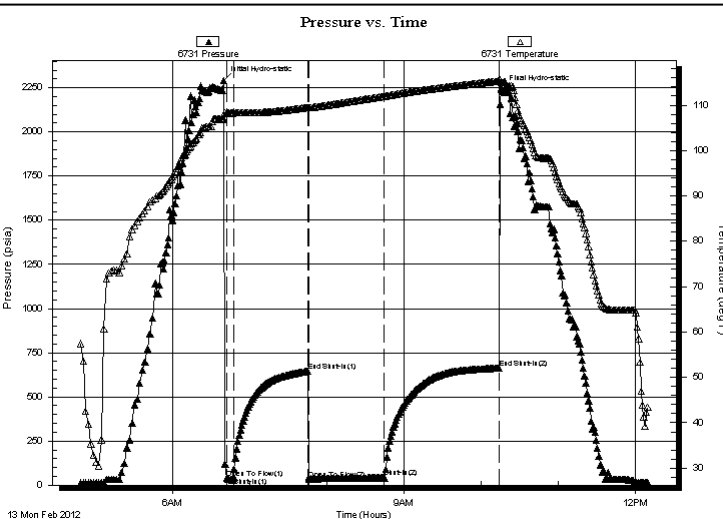
7/30S/13W Barber Co.
Bell " B " #1-7
 Job Ticket: 18836 **DST#: 3**
 Test Start: 2012.02.13 @ 04:47:00

GENERAL INFORMATION:

Formation: **Viola**
 Deviated: No Whipstock: ft (KB)
 Test Type: Conventional Bottom Hole (Initial)
 Time Tool Opened: 06:46:00 Tester: Dylan E Ellis
 Time Test Ended: 12:28:30 Unit No: 3345/Great Bend/142
Interval: 4581.00 ft (KB) To 4600.00 ft (KB) (TVD) Reference Elevations: 1922.00 ft (KB)
 Total Depth: 4600.00 ft (KB) (TVD) 1911.00 ft (CF)
 Hole Diameter: 7.88 inches Hole Condition: Fair KB to GR/CF: 11.00 ft

Serial #: 6731 Inside
 Press @ Run Depth: 662.74 psia @ 4596.00 ft (KB) Capacity: 5000.00 psia
 Start Date: 2012.02.13 End Date: 2012.02.13 Last Calib.: 2012.02.13
 Start Time: 04:47:00 End Time: 12:09:30 Time On Btm: 2012.02.13 @ 06:39:30
 Time Off Btm: 2012.02.13 @ 10:16:00

TEST COMMENT: 1ST Opening 5 Minutes very strong blow /blow blew to bottom of bucket in 15 seconds
 1ST Shut-In 60 Minutes no blow back
 2ND Opening 45 Minutes very very strong blow /blow blew to bottom of bucket instantly/gas to surface in 15 mins.
 2ND Shut-In 90 Minutes yes very weak surface blow back



PRESSURE SUMMARY

Time (Min.)	Pressure (psia)	Temp (deg F)	Annotation
0	2292.99	106.95	Initial Hydro-static
2	36.75	108.25	Open To Flow (1)
8	46.52	108.27	Shut-In(1)
66	645.35	109.52	End Shut-In(1)
67	35.38	109.42	Open To Flow (2)
125	41.93	111.93	Shut-In(2)
215	662.74	115.31	End Shut-In(2)
217	2242.35	115.03	Final Hydro-static

Recovery

Length (ft)	Description	Volume (bbl)
40.00	Mud cut Oil	0.56
0.00	40% Mud 60% Oil	0.00
0.00	Max gas gauged w as 2,000.0 mCf a day	0.00

Gas Rates

	Choke (inches)	Pressure (psia)	Gas Rate (Mcf/d)
First Gas Rate	0.13	3.00	1.12
Last Gas Rate	0.13	5.60	2.10



DRILL STEM TEST REPORT

TOOL DIAGRAM

F G Holl Oil Company

7/30S/13W Barber Co.

9431 East Central Suite 100
 Wichita, Kansas
 67206+2583
 ATTN: Rene Husted

Bell " B " #1-7

Job Ticket: 18836

DST#: 3

Test Start: 2012.02.13 @ 04:47:00

Tool Information

Drill Pipe:	Length: 4559.00 ft	Diameter: 3.80 inches	Volume: 63.95 bbl	Tool Weight: 2000.00 lb
Heavy Wt. Pipe:	Length: 0.00 ft	Diameter: 0.00 inches	Volume: 0.00 bbl	Weight set on Packer: 20000.00 lb
Drill Collar:	Length: 0.00 ft	Diameter: 2.25 inches	Volume: 0.00 bbl	Weight to Pull Loose: 16000.00 lb
			<u>Total Volume: 63.95 bbl</u>	Tool Chased 0.00 ft
Drill Pipe Above KB:	6.00 ft			String Weight: Initial 58000.00 lb
Depth to Top Packer:	4581.00 ft			Final 58000.00 lb
Depth to Bottom Packer:	ft			
Interval between Packers:	19.00 ft			
Tool Length:	47.00 ft			
Number of Packers:	2	Diameter: 6.75 inches		

Tool Comments:

Tool Description	Length (ft)	Serial No.	Position	Depth (ft)	Accum. Lengths
------------------	-------------	------------	----------	------------	----------------

Shut-In Tool	5.00			4558.00	
Hydraulic Tool	5.00			4563.00	
Jars	6.00			4569.00	
Safety Joint	2.00			4571.00	
Packer	5.00			4576.00	28.00 Bottom Of Top Packer
Packer	5.00			4581.00	
Anchor	14.00			4595.00	
Recorder	1.00	6731	Inside	4596.00	
Recorder	1.00	6666	Outside	4597.00	
Bull Plug	3.00			4600.00	19.00 Bottom Packers & Anchor
Total Tool Length:	47.00				



DRILL STEM TEST REPORT

FLUID SUMMARY

F G Holl Oil Company

7/30S/13W Barber Co.

9431 East Central Suite 100
Wichita, Kansas
67206+2583
ATTN: Rene Husted

Bell " B " #1-7

Job Ticket: 18836

DST#: 3

Test Start: 2012.02.13 @ 04:47:00

Mud and Cushion Information

Mud Type: Gel Chem
Mud Weight: 9.00 lb/gal
Viscosity: 49.00 sec/qt
Water Loss: 8.80 in³
Resistivity: ohm.m
Salinity: 4600.00 ppm
Filter Cake: 1.00 inches

Cushion Type:
Cushion Length: ft
Cushion Volume: bbl
Gas Cushion Type:
Gas Cushion Pressure: psia

Oil API: deg API
Water Salinity: ppm

Recovery Information

Recovery Table

Length ft	Description	Volume bbl
40.00	Mud cut Oil	0.561
0.00	40% Mud 60% Oil	0.000
0.00	Max gas gauged w as 2,000.0 mCf a day	0.000

Total Length: 40.00 ft Total Volume: 0.561 bbl

Num Fluid Samples: 0

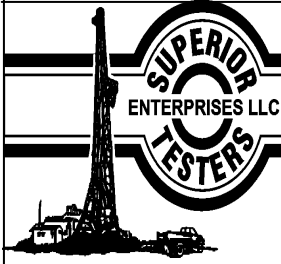
Num Gas Bombs: 0

Serial #:

Laboratory Name:

Laboratory Location:

Recovery Comments: Look at the gas gauge chart.



DRILL STEM TEST REPORT

GAS RATES

F G Holl Oil Company

7/30S/13W Barber Co.

9431 East Central Suite 100
Wichita, Kansas
67206+2583
ATTN: Rene Husted

Bell " B " #1-7

Job Ticket: 18836

DST#: 3

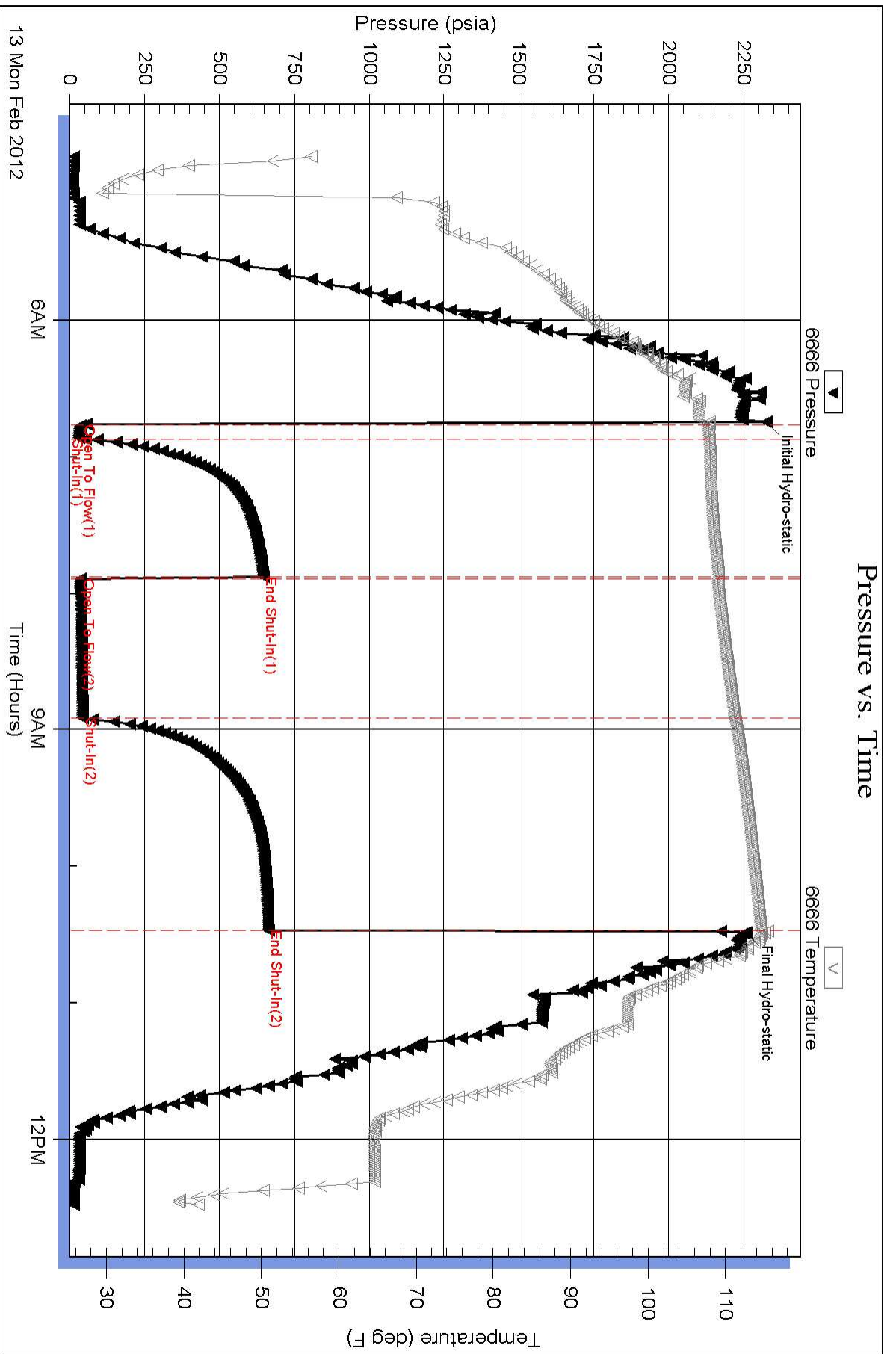
Test Start: 2012.02.13 @ 04:47:00

Gas Rates Information

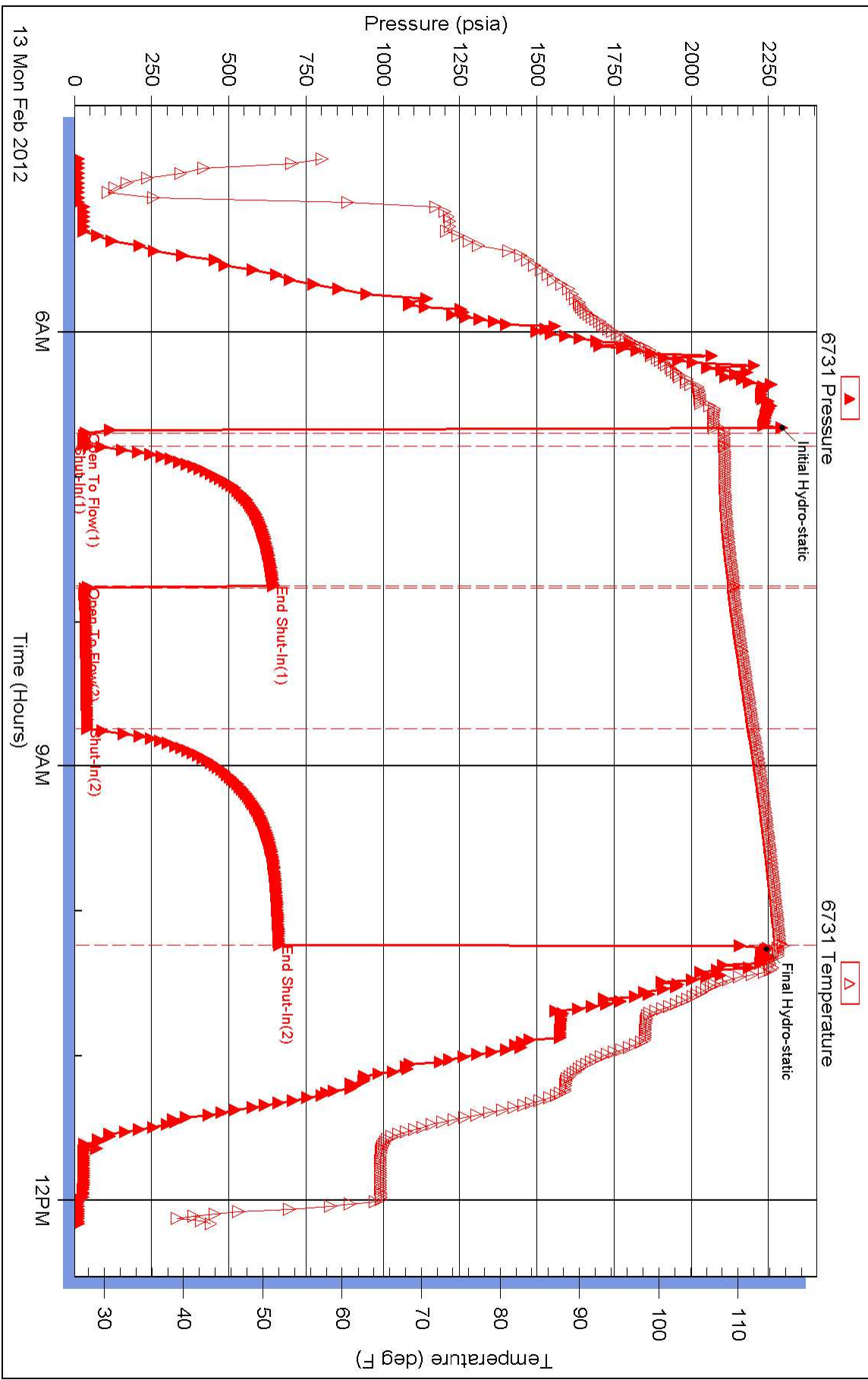
Temperature: 59 (deg F)
Relative Density: 0.65
Z Factor: 0.8

Gas Rates Table

Flow Period	Elapsed Time	Choke (inches)	Pressure (psia)	Gas Rate (Mcf/d)
2	50	0.13	3.00	1.12
2	60	0.13	5.60	2.10



Pressure vs. Time





DRILL STEM TEST REPORT

Prepared For: **F G Holl Oil Company**

9431 East Central Suite 100
Wichita, Kansas
67206+2583

ATTN: Rene Husted

Bell " B " #1-7

7/30S/13W Barber Co.

Start Date: 2012.02.14 @ 01:39:00

End Date: 2012.02.14 @ 00:00:00

Job Ticket #: 18837 DST #: 4

Superior Testers Enterprises LLC
PO Box 138 Great Bend KS 67530
1-800-792-6902

Printed: 2012.02.14 @ 19:13:59



DRILL STEM TEST REPORT

F G Holl Oil Company
 9431 East Central Suite 100
 Wichita, Kansas
 67206+2583
 ATTN: Rene Husted

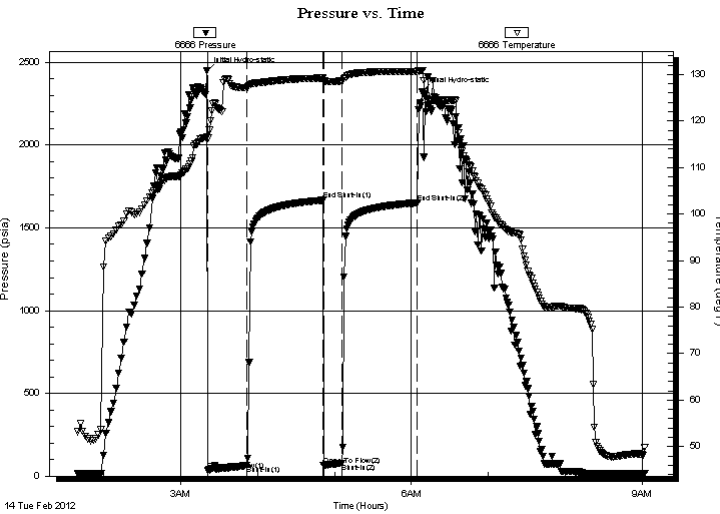
7/30S/13W Barber Co.
Bell " B " #1-7
 Job Ticket: 18837 **DST#: 4**
 Test Start: 2012.02.14 @ 01:39:00

GENERAL INFORMATION:

Formation: **Arbuckle**
 Deviated: No Whipstock: ft (KB)
 Test Type: Conventional Bottom Hole (Initial)
 Time Tool Opened: 00:00:00 Tester: Dylan E Ellis
 Time Test Ended: 00:00:00 Unit No: 3345/Great Bend/142
 Interval: **4655.00 ft (KB) To 4765.00 ft (KB) (TVD)** Reference Elevations: 1922.00 ft (KB)
 Total Depth: 4765.00 ft (KB) (TVD) 1911.00 ft (CF)
 Hole Diameter: 7.88 inches Hole Condition: Fair KB to GR/CF: 11.00 ft

Serial #: 6666 Outside
 Press @ Run Depth: 1650.81 psia @ 4762.00 ft (KB) Capacity: 5000.00 psia
 Start Date: 2012.02.14 End Date: 2012.02.14 Last Calib.: 2012.02.14
 Start Time: 01:39:00 End Time: 09:01:30 Time On Btm: 2012.02.14 @ 03:20:30
 Time Off Btm: 2012.02.14 @ 06:08:00

TEST COMMENT: 1ST Opening 30 Minutes w eak building blow /blow blew 6 inches into bucket of w ater
 1ST Shut-In 60 Minutes no blow back
 2ND Opening 15 Minutes very very w eak surface blow /blow blew 0.50 inches into w ater
 2ND Shut-In 60 Minutes no blow back



PRESSURE SUMMARY

Time (Min.)	Pressure (psia)	Temp (deg F)	Annotation
0	2446.21	116.49	Initial Hydro-static
1	34.90	116.27	Open To Flow (1)
31	63.79	127.22	Shut-In(1)
91	1666.51	129.19	End Shut-In(1)
92	65.44	128.57	Open To Flow (2)
105	78.48	128.56	Shut-In(2)
164	1650.81	130.62	End Shut-In(2)
168	2324.00	130.84	Final Hydro-static

Recovery

Length (ft)	Description	Volume (bbl)
105.00	very light Oil cut Muddy Water	1.47
0.00	2%Oil 63%Mud 35%Water	0.00
0.00	Chlorides w ere 55,000.0	0.00
0.00	Resistivity w as .20 @ 84 degrees	0.00

Gas Rates

	Choke (inches)	Pressure (psia)	Gas Rate (Mcf/d)



DRILL STEM TEST REPORT

TOOL DIAGRAM

F G Holl Oil Company

7/30S/13W Barber Co.

9431 East Central Suite 100
 Wichita, Kansas
 67206+2583
 ATTN: Rene Husted

Bell " B " #1-7

Job Ticket: 18837

DST#: 4

Test Start: 2012.02.14 @ 01:39:00

Tool Information

Drill Pipe:	Length: 4736.00 ft	Diameter: 3.80 inches	Volume: 66.43 bbl	Tool Weight: 2000.00 lb
Heavy Wt. Pipe:	Length: 0.00 ft	Diameter: 0.00 inches	Volume: 0.00 bbl	Weight set on Packer: 20000.00 lb
Drill Collar:	Length: 0.00 ft	Diameter: 2.25 inches	Volume: 0.00 bbl	Weight to Pull Loose: 55000.00 lb
		Total Volume: 66.43 bbl		Tool Chased 4.00 ft
Drill Pipe Above KB:	9.00 ft			String Weight: Initial 60000.00 lb
Depth to Top Packer:	4755.00 ft			Final 60000.00 lb
Depth to Bottom Packer:	ft			
Interval between Packers:	10.00 ft			
Tool Length:	38.00 ft			
Number of Packers:	2	Diameter: 6.75 inches		

Tool Comments: The tool was dragging up into the 9th stand coming out of the hole. We pulled 110,00 on it to the max for it to finally give a little. When we set the tool on bottom the tool set, then it slide about 3-4 feet.

Tool Description	Length (ft)	Serial No.	Position	Depth (ft)	Accum. Lengths
Shut-In Tool	5.00			4732.00	
Hydraulic Tool	5.00			4737.00	
Jars	6.00			4743.00	
Safety Joint	2.00			4745.00	
Packer	5.00			4750.00	28.00 Bottom Of Top Packer
Packer	5.00			4755.00	
Anchor	5.00			4760.00	
Recorder	1.00	6731	Inside	4761.00	
Recorder	1.00	6666	Outside	4762.00	
Bull Plug	3.00			4765.00	10.00 Bottom Packers & Anchor
Total Tool Length:	38.00				



DRILL STEM TEST REPORT

FLUID SUMMARY

F G Holl Oil Company

7/30S/13W Barber Co.

9431 East Central Suite 100
Wichita, Kansas
67206+2583
ATTN: Rene Husted

Bell " B " #1-7

Job Ticket: 18837

DST#: 4

Test Start: 2012.02.14 @ 01:39:00

Mud and Cushion Information

Mud Type: Gel Chem
Mud Weight: 9.00 lb/gal
Viscosity: 60.00 sec/qt
Water Loss: 8.80 in³
Resistivity: ohm.m
Salinity: 4000.00 ppm
Filter Cake: 1.00 inches

Cushion Type:
Cushion Length: ft
Cushion Volume: bbl
Gas Cushion Type:
Gas Cushion Pressure: psia

Oil API: deg API
Water Salinity: ppm

Recovery Information

Recovery Table

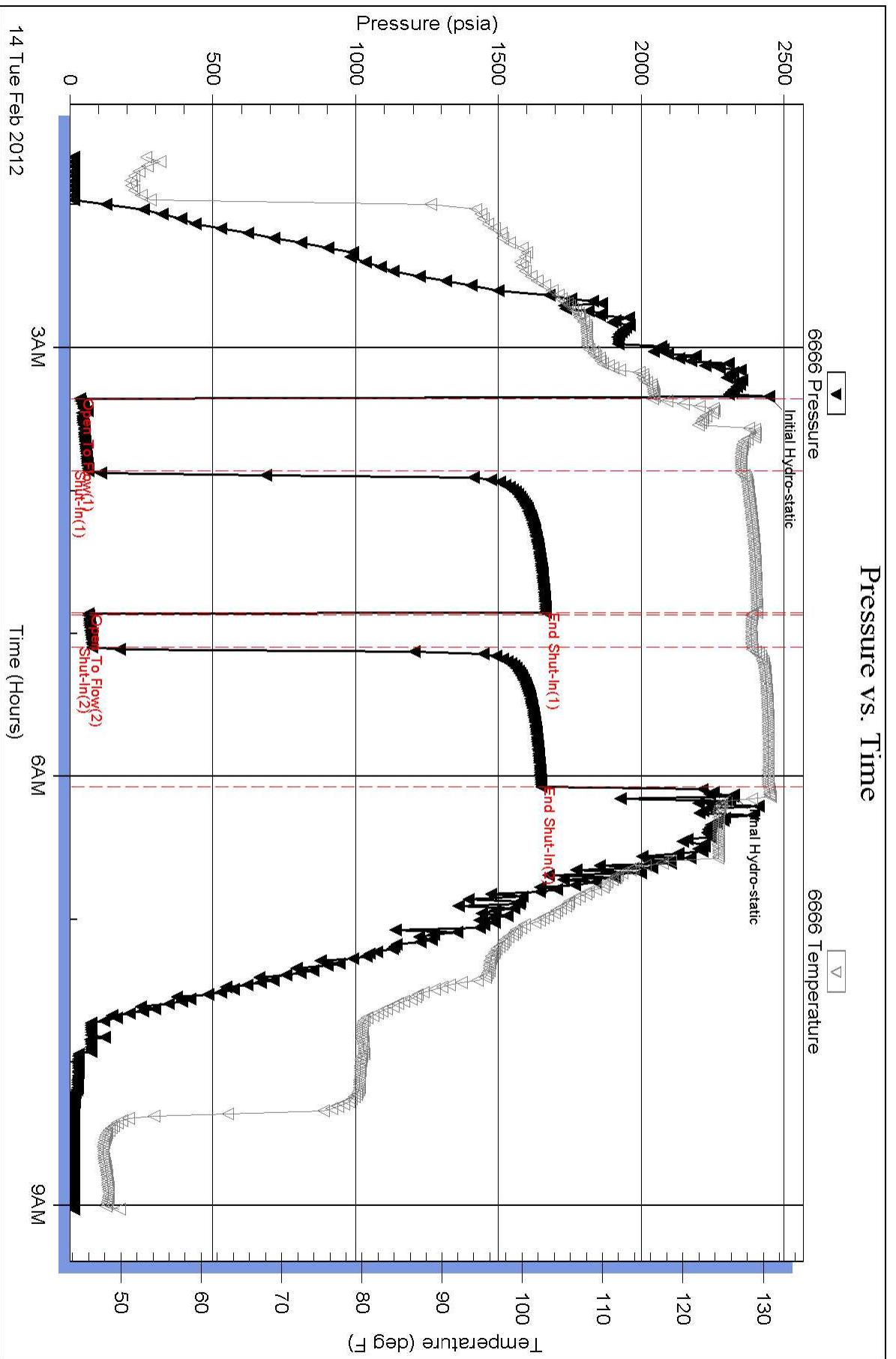
Length ft	Description	Volume bbl
105.00	very light Oil cut Muddy Water	1.473
0.00	2%Oil 63%Mud 35%Water	0.000
0.00	Chlorides were 55,000.0	0.000
0.00	Resistivity was .20 @ 84 degrees	0.000

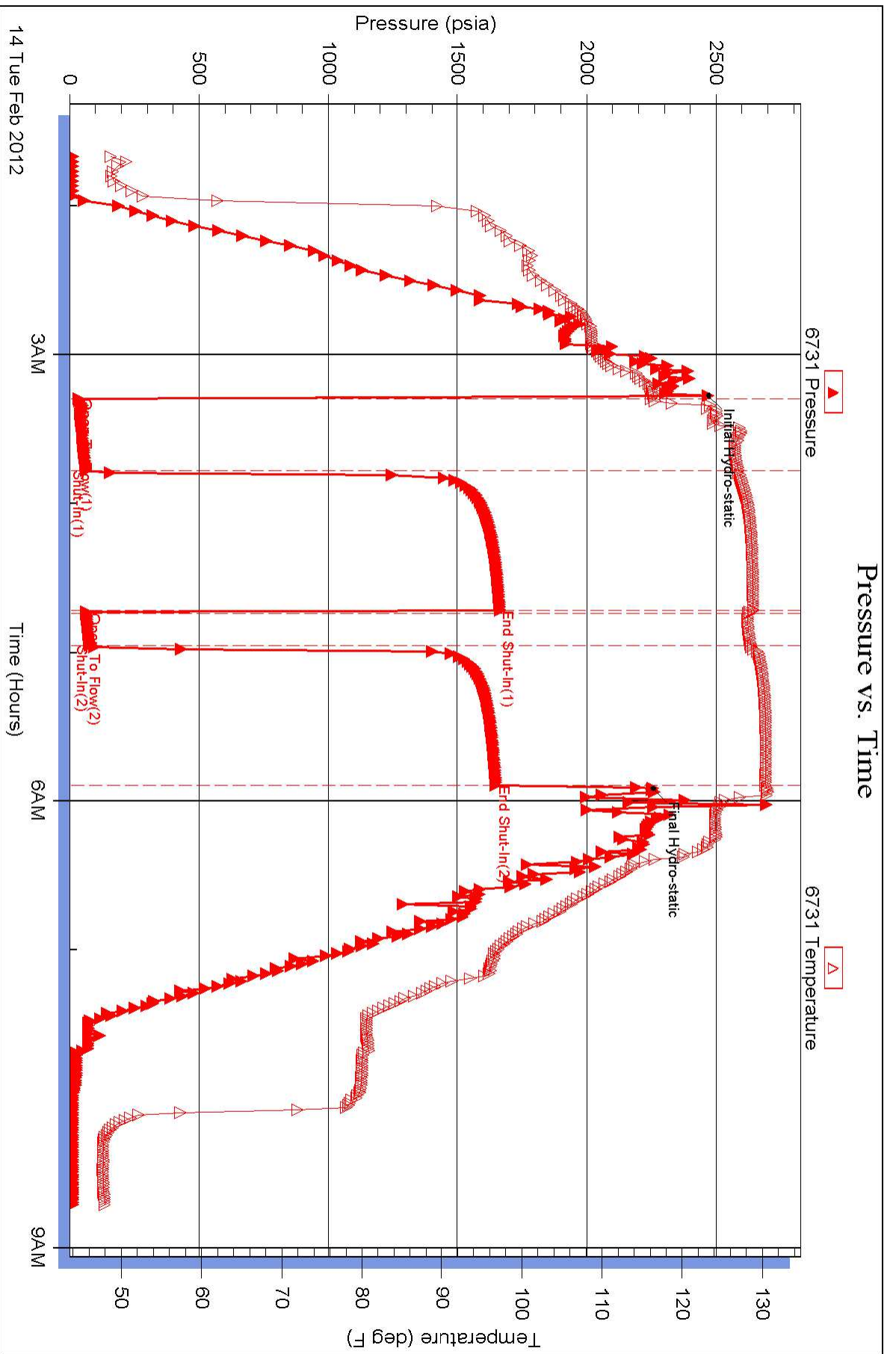
Total Length: 105.00 ft Total Volume: 1.473 bbl

Num Fluid Samples: 0 Num Gas Bombs: 0 Serial #:

Laboratory Name: Laboratory Location:

Recovery Comments: Left half of the bottom packer in the hole.







BASIC
ENERGY SERVICES
PRESSURE PUMPING & WIRELINE

10244 NE Hwy. 61
P.O. Box 8613
Pratt, Kansas 67124
Phone 620-672-1201

FIELD SERVICE TICKET
1718 05805 A

DATE _____ TICKET NO. _____

DATE OF JOB <u>12-16-12</u> DISTRICT <u>Pratt</u>		NEW WELL <input checked="" type="checkbox"/> OLD WELL <input type="checkbox"/> PROD <input type="checkbox"/> INJ <input type="checkbox"/> WDW <input type="checkbox"/> CUSTOMER ORDER NO.:							
CUSTOMER <u>F G HOLL CO LLC</u>		LEASE <u>Bell B</u> <u>1-7</u> WELL NO.							
ADDRESS		COUNTY <u>Barber</u> STATE <u>KS</u>							
CITY STATE		SERVICE CREW <u>Melson Pype Sullivan</u>							
AUTHORIZED BY		JOB TYPE: <u>CNW 4 1/2 LS</u>							
EQUIPMENT#	HRS	EQUIPMENT#	HRS	EQUIPMENT#	HRS	TRUCK CALLED	DATE	AM	TIME
<u>33705 20920</u>	<u>40 m</u>						<u>2/16/12</u>		<u>4:15</u>
<u>19960 19918</u>	<u>40 m</u>					ARRIVED AT JOB	<u>2/16/12</u>	AM	<u>6:45</u>
<u>37900</u>						START OPERATION	<u>2-16-12</u>	AM	<u>2:10</u>
						FINISH OPERATION	<u>2/16/12</u>	AM	<u>2:45</u>
						RELEASED	<u>2-16-12</u>	AM	<u>3:30</u>
						MILES FROM STATION TO WELL			<u>20</u>

CONTRACT CONDITIONS: (This contract must be signed before the job is commenced or merchandise is delivered).

The undersigned is authorized to execute this contract as an agent of the customer. As such, the undersigned agrees and acknowledges that this contract for services, materials, products, and/or supplies includes all of and only those terms and conditions appearing on the front and back of this document. No additional or substitute terms and/or conditions shall become a part of this contract without the written consent of an officer of Basic Energy Services LP.

SIGNED: [Signature]
(WELL OWNER, OPERATOR, CONTRACTOR OR AGENT)

ITEM/PRICE REF. NO.	MATERIAL, EQUIPMENT AND SERVICES USED	UNIT	QUANTITY	UNIT PRICE	\$ AMOUNT
CP 105735	AA2 Cement	SK	135		
CP 103	60/40 Poz	SK	75		
CL 102	Cello Flake	lb	34		
CL 105	Defoamer	lb	32		
CL 111	SALT	lb	605		
CL 115	Gas Blok	lb	127		
CL 129	FLA-322	lb	127		
CL 201	GILSONITE	lb	1725		
CF 606	Latch Down Plug	eg	1		
CF 1250	Auto Fill Shoe	eg	1		
CF 1650	Turbolizer	eg	8		
CF 1900	4 1/2 Basket	eg	1		
CF 2002	Scratchers	eg	30		
CL 154	Super Flush	gal	500		
E 100	Pickup Mileage	mi	20		
E 101	Heavy Mileage	mi	40		
F 113	Bulk Delivery	TM	192		
CE 205	Depth Charge	4hr	1		
CE 240	Mixing Charge	SK	210		

SUB 1

CHEMICAL / ACID DATA:

SERVICE & EQUIPMENT %TAX ON \$
MATERIALS %TAX ON \$

[Signature]

SERVICE REPRESENTATIVE [Signature]

THE ABOVE MATERIAL AND SERVICE ORDERED BY CUSTOMER AND RECEIVED BY: [Signature]

(WELL OWNER OPERATOR CONTRACTOR OR AGENT)

FIELD SERVICE ORDER NO.

Customer <i>J. P. Hollen</i>	Lease No.	Date
Lease <i>BEHL-B-1-7</i>	Well # <i>1-7</i>	<i>02-16-12</i>
Field Order # <i>5805</i>	Station <i>PRATT KS</i>	Casing <i>4 1/2</i>
		Depth <i>4901</i>
		County <i>BARASK</i>
		State <i>KS</i>
Type Job <i>CNW 4 1/2 Lowstay</i>	Formation	Legal Description <i>7-30-13</i>

PIPE DATA		PERFORATING DATA		FLUID USED		TREATMENT RESUME		
Casing Size <i>4 1/2</i>	Tubing Size	Shots/Ft		Acid	RATE	PRESS	ISIP	
Depth <i>4901</i>	Depth	From	To	Pre Pad	Max		5 Min.	
Volume <i>77</i>	Volume	From	To	Pad	Min		10 Min.	
Max Press <i>1800</i>	Max Press	From	To	Frac	Avg		15 Min.	
Well Connection <i>PC</i>	Annulus Vol.	From	To		HHP Used		Annulus Pressure	
Plug Depth <i>4839'</i>	Packer Depth	From	To	Flush	Gas Volume		Total Load	

Customer Representative	Station Manager <i>DAVE SCOTT</i>	Treater <i>Robert [Signature]</i>
Service Units <i>37900 33705 20920 1960 1974</i>		
Driver Names <i>Gallo [Signature] [Signature] [Signature]</i>		

Time	Casing Pressure	Tubing Pressure	Bbls. Pumped	Rate	Service Log
<i>6:45</i>					<i>ON loc. safety meeting</i>
					<i>Run 5.75 4 1/2 # 10.5 csg.</i>
<i>12:00</i>					<i>CASING ON BOTTOM</i>
<i>12:10</i>					<i>HOOK BY CIRC.</i>
<i>2:10</i>	<i>200</i>		<i>12</i>	<i>3</i>	<i>St Super Seal</i>
			<i>5</i>		<i>SPACER 4 3/4</i>
			<i>6</i>	<i>5</i>	<i>MIX SCAVENGER cont 25 sk 13.6 PP9.</i>
			<i>34</i>		<i>MIX AA-E cont 135 sk 15.5 PP9.</i>
					<i>cont mix 2.0 with Pump-Liner</i>
					<i>Release Plug</i>
				<i>6</i>	<i>St Dump</i>
	<i>350</i>				<i>Lift Ps.</i>
	<i>600</i>			<i>3.5</i>	<i>Slow Rate</i>
<i>2:45</i>	<i>1800</i>		<i>77</i>		<i>plug down</i>
			<i>7</i>	<i>2</i>	<i>plug R.H w/ 30 sk</i>
			<i>6</i>		<i>plug M.H w/ 20 sk</i>
					<i>JOB COMPLETE</i>
					<i>Thank you</i>

Customer E.L. Hall	Lease No.	Date 2-3-12			
Lease Bull	Well # P3-1-7				
Field Order # 5648	Station Pratt	Casing 7 1/2	Depth 271	County Barber	State OK
Type Job C.N.W. - 13 3/4 (6.000)	Formation	Legal Description 7-30-12			

PIPE DATA		PERFORATING DATA		FLUID USED		TREATMENT RESUME		
Casing Size	Tubing Size	Shots/Ft		Acid	RATE	PRESS	ISIP	
1500			1500	Acid				
Depth 271	Depth	From	To	Pre Pad	Max		5 Min.	
Volume 425	Volume	From	To	Pad	Min		10 Min.	
Max Press 820	Max Press	From	To	Frac	Avg		15 Min.	
Well Connection 13 3/4	Annulus Vol.	From	To		HHP Used		Annulus Pressure	
Plug Depth 271	Packer Depth	From	To	Flush 40.8	Gas Volume		Total Load	

Customer Representative Scott	Station Manager Drew Scott	Treater Steve Williams
----------------------------------	-------------------------------	---------------------------

Service Units	07325	15865 / 15242	14300 / 15260						
Driver Names	Drew	Drew	Drew						

Time	Casing Pressure	Tubing Pressure	Bbls. Pumped	Rate	Service Log
3:30					Calculate Safety Headings
					Run 5 1/2 13 3/4 Csg
					Casing on Bottom
					Break Circulation
8:40	150		56	4	max 150 psi Acc @ 11 1/4 / 60
8:50	0		32	4	max 150 psi Comm @ 15 1/4 / 60
					Shut Down - Return plug
9:05	0		0	4	Start H2O Displacement
9:10	200		30	4	Coment to Surface
9:15	200		40.8	3%	plug down
					Job Complete
					Thanks, Steve
					Calculate Friction
					Calculate 11 bbls / 70 ft



BASICSM
ENERGY SERVICES
PRESSURE PUMPING & WIRELINE

10244 NE Hwy. 61
P.O. Box 8613
Pratt, Kansas 67124
Phone 620-672-1201

FIELD SERVICE TICKET
1718 05672 A

DATE _____ TICKET NO. _____

DATE OF JOB <u>02-05-12</u> DISTRICT <u>Pratt # 1</u>		NEW WELL <input checked="" type="checkbox"/> OLD WELL <input type="checkbox"/> PROD <input type="checkbox"/> INJ <input type="checkbox"/> WDW <input type="checkbox"/> CUSTOMER ORDER NO.:							
CUSTOMER <u>F.P. HALL</u>		LEASE <u>BELL B</u> 1-7 WELL NO.							
ADDRESS		COUNTY <u>BARBER</u> STATE <u>KS</u>							
CITY STATE		SERVICE CREW <u>Sullivan, Mahony, & Wynn, McPherson</u>							
AUTHORIZED BY		JOB TYPE: <u>CNW 8 3/4 Surface</u>							
EQUIPMENT#	HRS	EQUIPMENT#	HRS	EQUIPMENT#	HRS	TRUCK CALLED	DATE	AM	TIME
<u>17826-19860</u>	<u>1</u>						<u>2-4-12</u>		<u>5:30</u>
<u>17826-19860</u>	<u>1</u>								<u>6:45</u>
<u>19832-21010</u>	<u>1</u>								<u>10:05</u>
<u>37900</u>									<u>2:40</u>
									<u>3:00</u>
						MILES FROM STATION TO WELL	<u>30</u>		

CONTRACT CONDITIONS: (This contract must be signed before the job is commenced or merchandise is delivered).

The undersigned is authorized to execute this contract as an agent of the customer. As such, the undersigned agrees and acknowledges that this contract for services, materials, products, and/or supplies includes all of and only those terms and conditions appearing on the front and back of this document. No additional or substitute terms and/or conditions shall become a part of this contract without the written consent of an officer of Basic Energy Services LP.

SIGNED: [Signature]
(WELL OWNER, OPERATOR, CONTRACTOR OR AGENT)

ITEM/PRICE REF. NO.	MATERIAL, EQUIPMENT AND SERVICES USED	UNIT	QUANTITY	UNIT PRICE	\$ AMOUNT
CP 101	4-conc cut	SK	280		
CP 100	Common cut	SK	175		
CP 100	Common cut	SK	175		
CC 102	CellHake	lb	114		
CC 109	Calcium chloride	lb	1122		
CF 105	TOP Rubber Plug 8 3/4	SA	1		
CF 753	EARPLUG	SA	1		
CF 1753	Container	SA	3		
CF 1903	Basket	SA	2		
CC 109	Calcium chloride	lb	160		
E 100	grease	mi	20		
E 101	Heavy Spud mud	mi	80		
E 113	Bulk Diesel	mi	664		
CE 221	Depth change 501 100'	SA	1		
CF 240	Bleeding - mixing	SK	705		
CE 504	plug container - Metal	SA	1		
S 003	Serviced equipment	SA	1		
CP 100	Common cut	SK	75		
CC 109	Calcium chloride	lb	480		

SUB TOT
DLS

CHEMICAL / ACID DATA:			

SERVICE & EQUIPMENT	%TAX ON \$
MATERIALS	%TAX ON \$
TOT	

Thank you

SERVICE REPRESENTATIVE [Signature]

THE ABOVE MATERIAL AND SERVICE ORDERED BY CUSTOMER AND RECEIVED BY: [Signature]

FIELD SERVICE ORDER NO. _____

(WELL OWNER OPERATOR CONTRACTOR OR AGENT)

Customer 7.9. HULL	Lease No.	Date 02-05-12			
Lease BELL B	Well # 1-7				
Field Order # 5072	Station PRATT KS	Casing 8 5/8	Depth 743'	County BARBER	State KS
Type Job CPW 8 5/8 Surface	Formation	Legal Description 7-30-13			

PIPE DATA		PERFORATING DATA		FLUID USED	TREATMENT RESUME		
Casing Size	Tubing Size	Shots/Ft		Acid	RATE	PRESS	ISIP
8 5/8							
Depth 743'	Depth	From	To	Pre Pad	Max		5 Min.
Volume 57	Volume	From	To	Pad	Min		10 Min.
Max Press 500	Max Press	From	To	Frac	Avg		15 Min.
Well Connection P.C	Annulus Vol.	From	To		HHP Used		Annulus Pressure
Plug Depth 705	Packer Depth	From	To	Flush	Gas Volume		Total Load

Customer Representative	Station Manager DAVE SCOTT	Treater <i>Robert Johnson</i>
-------------------------	--------------------------------------	----------------------------------

Service Units	37900	33708	20920	19826	19860	19832	21010			
Driver Names	<i>Sullivan</i>	<i>Melton</i>	<i>Young</i>		<i>McGraw</i>					

Time	Casing Pressure	Tubing Pressure	Bbls. Pumped	Rate	Service Log
6:45					ON LOC SORT, READY
					RUN 22 STS 8 5/8 29 ESP.
9:50					CASING AND BOTTOM Break in
10:05	250		3		St Spiker
			106	4.5	St mixing 280 sk A-CAN cont 3%cc 1/4 col/Fute
			37	5	mix 175 sk Comma w/ 3%cc 1/4 col/Hoke, shot down cont mixed
					Release Plug
				4	St Deep NO CIRC.
10:50	400		57		plug down
11:00				1 1/2	TOP 8 5/8 w/ 175 sk com 2%cc
11:30	0		37		shot down. wait on next cont
2:10					mix cont
2:20			18		shot down cont IN collar 75 sk
2:40					SOR complete
					Thank you