

**Thomas J. Funk
Petroleum Geologist
785-542-3359**

**Geologists Report
Drilling Time and Sample Log**

OPERATOR Murfin Drilling Co., Inc
LEASE Wieland Unit
WELL NO #1-36
FIELD Wildcat
API 15-109-21060
LOCATION 1560' FNL & 550' FEL
SEC. 36
TWP. 12S
RGE 32W
COUNTY Logan
STATE Kansas

ELEVATION
KB 2997
DF 2984
GL 2984
Measurements Are All From KB

CASING RECORD
SURFACE 8 5/8" at 225' KB w/225sx
PRODUCTION
None

CONTRACTOR Murfin Drilling Co. Rig #25
COMM 12/16/2011
RTD 4/7/12
SAMPLES SAVED FROM 3900
DRILLING TIME KEPT FROM 3690
SAMPLES EXAMINED FROM 3900
TO TD

GEOLOGICAL SUPERVISION FROM 3900
MUD P/L 3400
TYPE MUD Chemical

ELECTRICAL SURVEYS
LOG TECH
DIL
MEL
CNL/CDL
BHCS

FORMATION	LOG TOP DATUM	SAMPLE TOP DATUM	STRUCT COAMP
Anhydrite	2590 (+497)	2510 (+487)	+7
B/Anhydrite	2525 (+472)	2531 (+466)	+7
Topeka	3793 (-762)	3760 (-761)	+1
Heebner Sh	3993 (-966)	3990 (-963)	+1
Lansing	4018 (-1021)	4025 (-1028)	+8
Wimber Creek	4178 (-1181)	4183 (-1186)	-8
Stark Sh	4257 (-1260)	4285 (-1269)	-3
Marrion	4348 (-1351)	4355 (-1356)	-1
Pawnee	4463 (-1466)	4469 (-1472)	-8
Cherokee Sh	4540 (-1543)	4548 (-1551)	-7
Johnson Zone	4582 (-1585)	4597 (-1590)	-7
Mississippian	4653 (-1656)	4660 (-1663)	+4

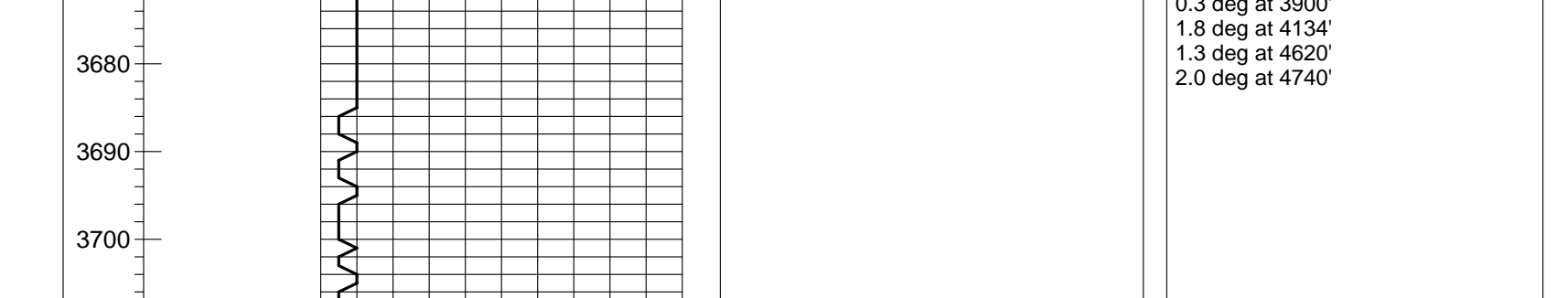
REFERENCE WELL FOR STRUCTURAL COMPARISON: Murfin Drilling Co., #2-35 Kullman D, 335' FNL, 765' FNL, sec. 35-12S-32W, Logan Co., KS

Daily Progress	NOI	Size	Make	Type	Depth Out	Feet	Hours
12/16/11	Spud	1	12 1/4"	Smith	RR	225	225
12/17/11	225 W/O/C	2	7 7/8"	Smith	M616	3900	3675
12/18/11	1710'	3	7 7/8"	HTC	GK-22s	4740	840
12/19/11	2913'					42	
12/20-26	3900' Dn for Xmas						
12/27/11	4134'						
12/28/11	4285'						
12/29/11	4620'						
12/30/11	4740' TD Logging						

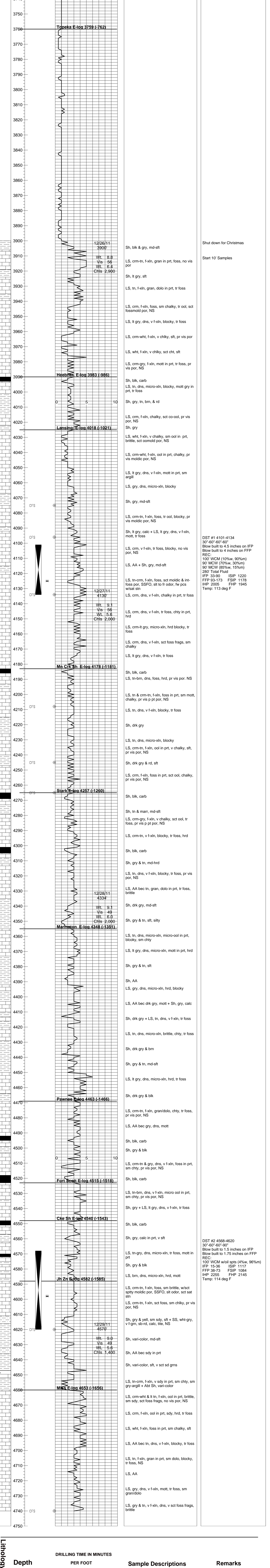
Remarks And Recommendations:
Based upon log analysis, DST recovery, and sample examination it was recommended that the #1-36 Wieland Unit be plugged and abandoned.

Thomas J. Funk
Petroleum Geologist

LEGEND



Lithology



Lithology

COMPANY Murfin Drilling Co., Inc
LEASE #1-36 Wieland Unit
LOCATION 1560' FNL & 550' FEL
COUNTY Logan

ELEVATION 2997 KB
Sec 36
TWP 12S
RGE 32W
STATE Kansas