



DRILL STEM TEST REPORT

Prepared For: **Trans Pacific Oil Corporation**

100 South Main
Suite 200
Wichita, Kansas 67202+3735

ATTN: Christina Goodrich

14/17S/26W/Ness

Dumler Unit A 1-14

Start Date: 2011.11.02 @ 13:01:00

End Date: 2011.11.02 @ 21:10:30

Job Ticket #: 18793 DST #: 3

Superior Testers Enterprises LLC
PO Box 138 Great Bend KS 67530
1-800-792-6902

Printed: 2011.11.02 @ 19:27:26



DRILL STEM TEST REPORT

Trans Pacific Oil Corporation
 100 South Main
 Suite 200
 Wichita, Kansas 67202+3735
 ATTN: Christina Goodrich

Dumler Unit A 1-14

14/17S/26W/Ness

Job Ticket: 18793

DST#: 3

Test Start: 2011.11.02 @ 13:01:00

GENERAL INFORMATION:

Formation: **Mississippi**

Deviated: No Whipstock: ft (KB)

Time Tool Opened: 14:56:30

Time Test Ended: 21:10:30

Test Type: Conventional Bottom Hole (Initial)

Tester: Ken Swinney

Unit No: 3325 Great Bend/190

Interval: 4472.00 ft (KB) To 4521.00 ft (KB) (TVD)

Reference Elevations: 2591.00 ft (KB)

Total Depth: 4521.00 ft (KB) (TVD)

2582.00 ft (CF)

Hole Diameter: 7.88 inches Hole Condition: Fair

KB to GR/CF: 9.00 ft

Serial #: 6651

Inside

Press @ Run Depth: 85.12 psig @ 4517.11 ft (KB)

Capacity: 5000.00 psig

Start Date: 2011.11.02 End Date: 2011.11.02

Last Calib.: 2011.11.02

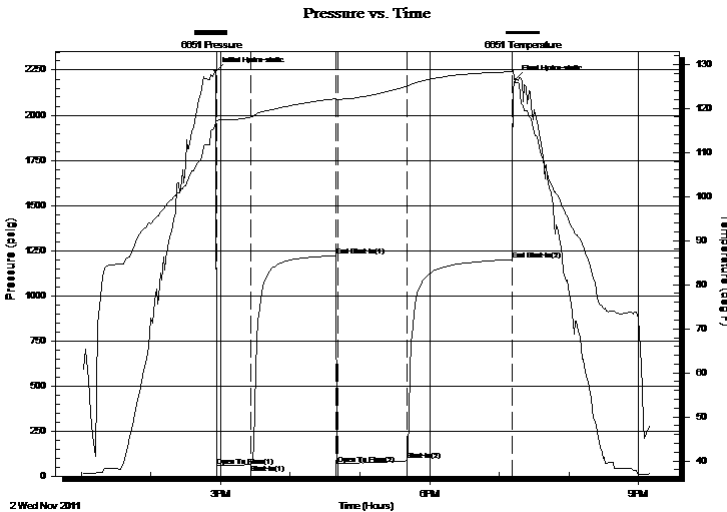
Start Time: 13:01:00 End Time: 21:10:30

Time On Btm: 2011.11.02 @ 14:55:30

Time Off Btm: 2011.11.02 @ 19:14:00

TEST COMMENT: 1ST Open 30 Minutes/Fair blow/Blow built to 4 1/2 inches
 1ST Shut In 75 Minutes/No blow back
 2ND Open 60 Minutes/Fair blow/Blow built to 8 inches
 2ND Shut In 90 Minutes/No blow back

PRESSURE SUMMARY



Time (Min.)	Pressure (psig)	Temp (deg F)	Annotation
0	2243.52	116.80	Initial Hydro-static
1	56.53	117.16	Open To Flow (1)
31	63.94	118.03	Shut-In(1)
104	1221.81	122.19	End Shut-In(1)
106	68.50	121.99	Open To Flow (2)
166	85.12	124.99	Shut-In(2)
256	1200.14	128.32	End Shut-In(2)
259	2197.20	125.79	Final Hydro-static

Recovery

Length (ft)	Description	Volume (bbl)
0.00	85 feet gas in pipe	0.00
5.00	Clean oil 100%	0.07
90.00	Oily mud/ Oil 40% Mud 60%	1.32

Gas Rates

	Choke (inches)	Pressure (psig)	Gas Rate (Mcf/d)



DRILL STEM TEST REPORT

Trans Pacific Oil Corporation

Dumler Unit A 1-14

100 South Main
Suite 200
Wichita, Kansas 67202+3735
ATTN: Christina Goodrich

14/17S/26W/Ness

Job Ticket: 18793

DST#: 3

Test Start: 2011.11.02 @ 13:01:00

GENERAL INFORMATION:

Formation: **Mississippi**

Deviated: No Whipstock: ft (KB)

Time Tool Opened: 14:56:30

Time Test Ended: 21:10:30

Test Type: Conventional Bottom Hole (Initial)

Tester: Ken Swinney

Unit No: 3325 Great Bend/190

Interval: 4472.00 ft (KB) To 4521.00 ft (KB) (TVD)

Reference Elevations: 2591.00 ft (KB)

Total Depth: 4521.00 ft (KB) (TVD)

2582.00 ft (CF)

Hole Diameter: 7.88 inches Hole Condition: Fair

KB to GR/CF: 9.00 ft

Serial #: 6749 Outside

Press @ Run Depth: 1197.59 psig @ 4518.11 ft (KB)

Capacity: 5000.00 psig

Start Date: 2011.11.02 End Date: 2011.11.02

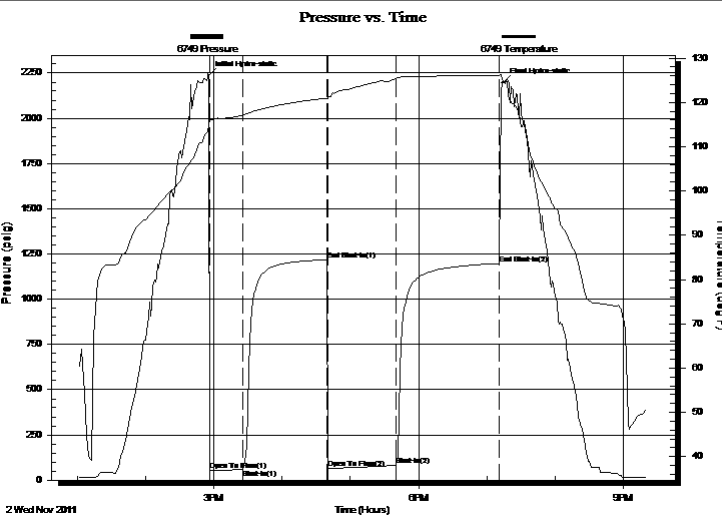
Last Calib.: 2011.11.02

Start Time: 13:01:00 End Time: 21:21:00

Time On Btm: 2011.11.02 @ 14:55:30

Time Off Btm: 2011.11.02 @ 19:14:00

TEST COMMENT: 1ST Open 30 Minutes/Fair blow/Blow built to 4 1/2 inches
1ST Shut In 75 Minutes/No blow back
2ND Open 60 Minutes/Fair blow/Blow built to 8 inches
2ND Shut In 90 Minutes/No blow back



PRESSURE SUMMARY

Time (Min.)	Pressure (psig)	Temp (deg F)	Annotation
0	2238.11	115.03	Initial Hydro-static
1	51.44	115.78	Open To Flow (1)
30	60.30	117.13	Shut-In(1)
104	1218.90	120.94	End Shut-In(1)
105	64.47	120.88	Open To Flow (2)
165	81.51	125.43	Shut-In(2)
256	1197.59	126.14	End Shut-In(2)
259	2196.93	124.88	Final Hydro-static

Recovery

Length (ft)	Description	Volume (bbl)
0.00	85 feet gas in pipe	0.00
5.00	Clean oil 100%	0.07
90.00	Oily mud/ Oil 40% Mud 60%	1.32

Gas Rates

	Choke (inches)	Pressure (psig)	Gas Rate (Mcf/d)



DRILL STEM TEST REPORT

TOOL DIAGRAM

Trans Pacific Oil Corporation

Dumler Unit A 1-14

100 South Main
Suite 200
Wichita, Kansas 67202+3735
ATTN: Christina Goodrich

14/17S/26W/Ness

Job Ticket: 18793

DST#: 3

Test Start: 2011.11.02 @ 13:01:00

Tool Information

Drill Pipe:	Length: 4474.00 ft	Diameter: 3.88 inches	Volume: 65.43 bbl	Tool Weight: 2000.00 lb
Heavy Wt. Pipe:	Length: 0.00 ft	Diameter: 0.00 inches	Volume: 0.00 bbl	Weight set on Packer: 20000.00 lb
Drill Collar:	Length: 0.00 ft	Diameter: 0.00 inches	Volume: 0.00 bbl	Weight to Pull Loose: 68000.00 lb
			<u>Total Volume: 65.43 bbl</u>	Tool Chased 2.00 ft
Drill Pipe Above KB:	22.00 ft			String Weight: Initial 58000.00 lb
Depth to Top Packer:	4472.00 ft			Final 58000.00 lb
Depth to Bottom Packer:	ft			
Interval between Packers:	49.11 ft			
Tool Length:	69.11 ft			
Number of Packers:	2	Diameter: 6.75 inches		

Tool Comments:

Tool Description	Length (ft)	Serial No.	Position	Depth (ft)	Accum. Lengths
------------------	-------------	------------	----------	------------	----------------

Shut-in tool	5.00			4457.00	
Hydraulic tool	5.00			4462.00	
Packer	5.00			4467.00	20.00 Bottom Of Top Packer
Packer	5.00			4472.00	
Anchor	2.00			4474.00	
change over sub	0.75			4474.75	
drill pipe	30.61			4505.36	
change over sub	0.75			4506.11	
anchor	10.00			4516.11	
Recorder	1.00	6651	Inside	4517.11	
Recorder	1.00	6749	Outside	4518.11	
bull plug	3.00			4521.11	49.11 Bottom Packers & Anchor

Total Tool Length: 69.11



DRILL STEM TEST REPORT

FLUID SUMMARY

Trans Pacific Oil Corporation

Dumler Unit A 1-14

100 South Main
Suite 200
Wichita, Kansas 67202+3735
ATTN: Christina Goodrich

14/17S/26W/Ness

Job Ticket: 18793

DST#: 3

Test Start: 2011.11.02 @ 13:01:00

Mud and Cushion Information

Mud Type: Gel Chem
Mud Weight: 9.00 lb/gal
Viscosity: 59.00 sec/qt
Water Loss: 6.79 in³
Resistivity: ohm.m
Salinity: 5800.00 ppm
Filter Cake: 1.00 inches

Cushion Type:
Cushion Length: ft
Cushion Volume: bbl
Gas Cushion Type:
Gas Cushion Pressure: psig

Oil API: deg API
Water Salinity: ppm

Recovery Information

Recovery Table

Length ft	Description	Volume bbl
0.00	85 feet gas in pipe	0.000
5.00	Clean oil 100%	0.073
90.00	Oily mud/ Oil 40% Mud 60%	1.316

Total Length: 95.00 ft Total Volume: 1.389 bbl

Num Fluid Samples: 0

Num Gas Bombs: 0

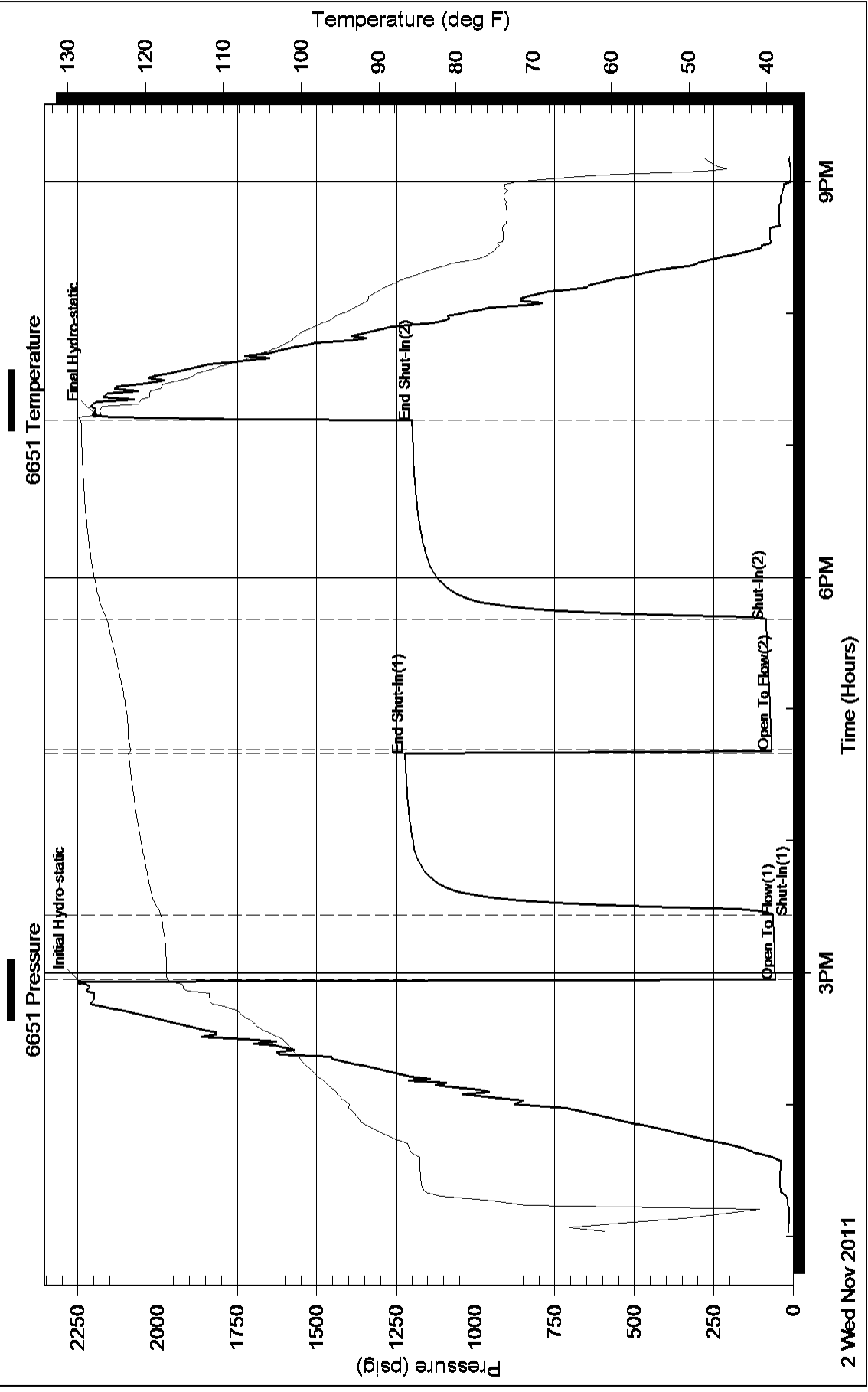
Serial #:

Laboratory Name:

Laboratory Location:

Recovery Comments:

Pressure vs. Time



Pressure vs. Time

