

GEOLOGIST'S REPORT
DRILLING TIME AND SAMPLE LOG

Geologist on Well Bryce Bidleman & Cristina Goodrich

LEASE _____ Dangler Unit - A #1 -14

FIELD _____

LOCATION 200' FNL & 670' FWL

SOC 14 TMSIP 17S ROE 2.6/W

COUNTRY Ness STATE Kansas

CONTRACTOR Duke Drilling Rig #4

SPUD 10/26/2011 COM 11/03/2011

RD 4521 LTD 4521

MUD UP 3577 TYPE MUD CHEMICAL

SAMPLES SAVED FROM 3800 TO TD

DRILLING TIME KEPT FROM 3800 TO TD

SAMPLES EXAMINED FROM 3800 TO TD

GEOLOGICAL SUPERVISION FROM 3800 - TD

REFERENCE WELL Dangler U - #2 Heikel

FORMATION _____

Sample Tops _____ E-log Tops _____

Formation _____ Sample _____

Base Anhydrite 1932 (+652) 1934 (+650) +2

Hebner 1965 (+619) 1965 (+619) -1

Larming 3851 (-1267) 3851 (-1271) -1

Stark Shale 4144 (-1560) 4148 (-1564) -2

BKC 4207 (-1623) 4208 (-1624) -3

Marmaton 4232 (-1648) 4235 (-1651) -4

Fort Scott 4423 (-1839) 4421 (-1817) -1

Cherokee Shale 4423 (-1839) 4428 (-1844) -2

Missouri Dol 4513 (-1931) 4515 (-1931) -2

REMARKS Due to the positive test results of DST#3, it was decided to run production casing to further evaluate this well.

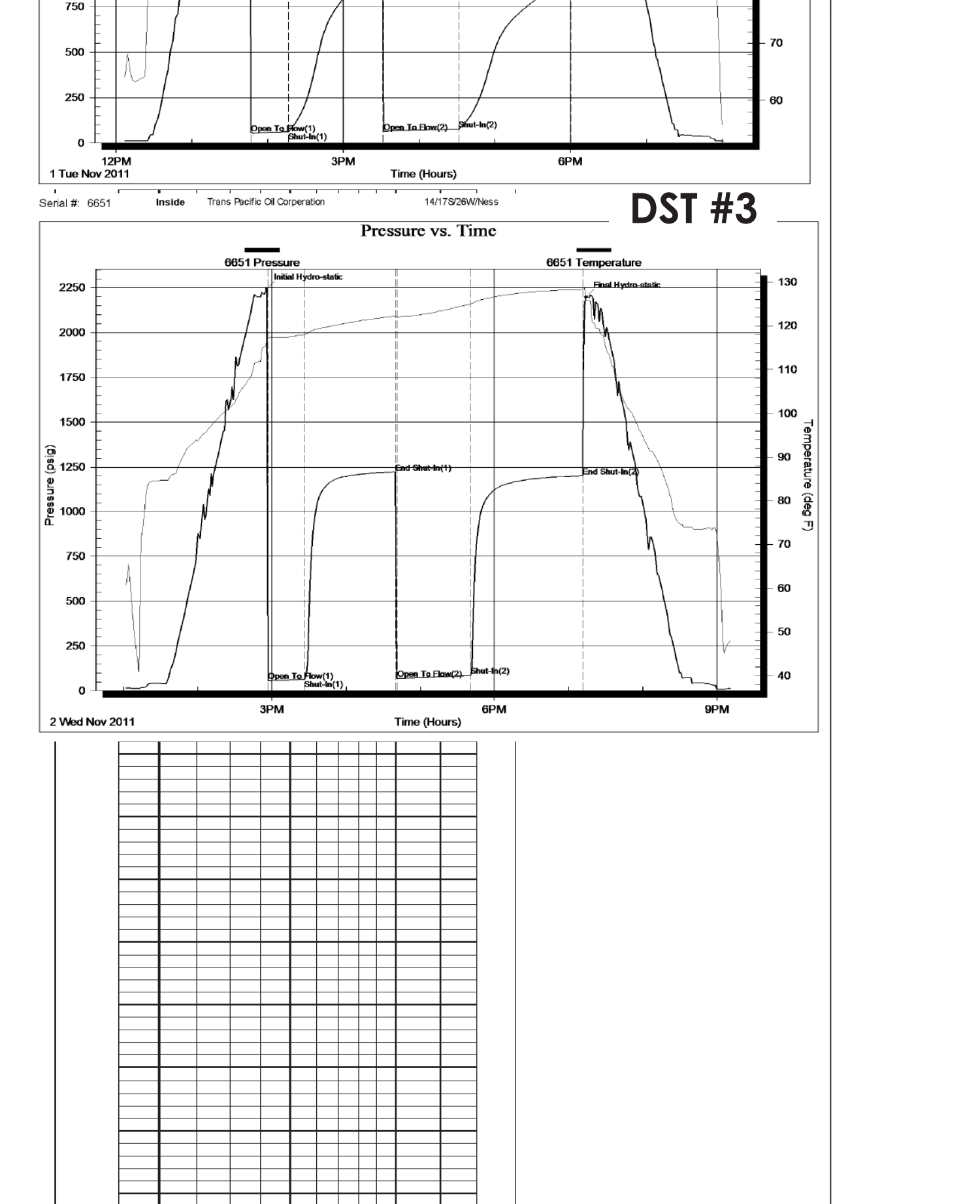
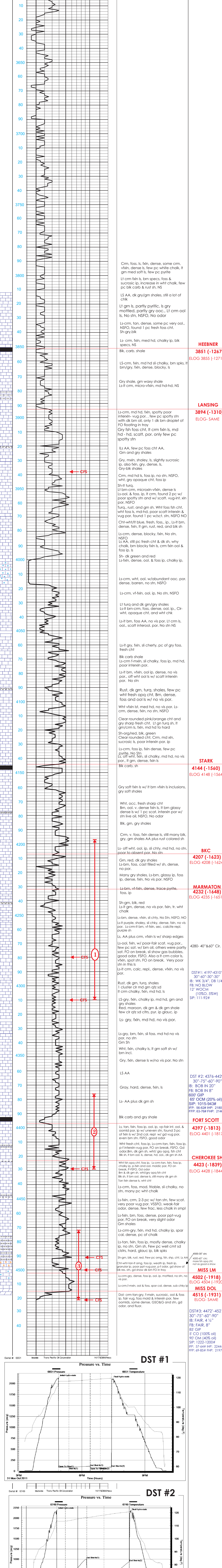
Ran 103 its new 4-1/2" 10.5# csg w/backer shoe on bottom and insert baffle in first collar. Tagged bottom pulled up 5' setting packer at 4516' baffle at 4471' P.C. at 1822'.

Ran cmt baskets above pkr shoe and below P.C. Swift pumped 500 gal mud flush followed by 170 sx EA-2 cmt containing 10% salt, 5% caesal, 1/4# flocele, & 1/2% CFR. Plugged rat hole w/30 sx. Plug down 5:30 P.M. 11/3/2011.

Respectfully Submitted,
 Cristina Goodrich & Bryce Bidleman

LEGEND

Anhydrite
 Sandstone
 Limestone
 Shale
 Carb Sh
 Cherty LS
 Chert
 Dolomite



DST #1
 0651 Pressure vs. Time
 0651 Temperature vs. Time
 31 Mon Oct 2011

DST #2
 6749 Pressure vs. Time
 6749 Temperature vs. Time
 1 Tue Nov 2011

DST #3
 6651 Pressure vs. Time
 6651 Temperature vs. Time
 2 Wed Nov 2011

Serial #: 6651 Inside Trans Pacific Oil Corporation 1417526W/ness

Serial #: 6749 Outside Trans Pacific Oil Corporation 1417526W/ness

Serial #: 6651 Inside Trans Pacific Oil Corporation 1417526W/ness