



DRILL STEM TEST REPORT

Prepared For: **Samuel Gary Jr & Assoc Inc**

1515 Wynkoop
Ste700
Denver Co 80202

ATTN: Clayton Camozzi

Liebl #2-1

1-18s-12w Barton

Start Date: 2011.10.12 @ 18:00:50

End Date: 2011.10.12 @ 23:48:14

Job Ticket #: 44572 DST #: 2

Trilobite Testing, Inc
PO Box 362 Hays, KS 67601
ph: 785-625-4778 fax: 785-625-5620

Printed: 2011.10.13 @ 10:04:50



**TRILOBITE
TESTING, INC.**

DRILL STEM TEST REPORT

Samuel Gary Jr & Assoc Inc

1-18s-12w Barton

1515 Wynkoop
Ste700
Denver Co 80202
ATTN: Clayton Camozzi

Liebl #2-1

Job Ticket: 44572

DST#: 2

Test Start: 2011.10.12 @ 18:00:50

GENERAL INFORMATION:

Formation: **LKC I-J**

Deviated: No Whipstock: ft (KB)

Time Tool Opened: 19:34:45

Time Test Ended: 23:48:14

Test Type: Conventional Bottom Hole (Reset)

Tester: Ray Schwager

Unit No: 42

Interval: 3230.00 ft (KB) To 3260.00 ft (KB) (TVD)

Reference Elevations: 1843.00 ft (KB)

Total Depth: 3260.00 ft (KB) (TVD)

1835.00 ft (CF)

Hole Diameter: 7.85 inches Hole Condition: Fair

KB to GR/CF: 8.00 ft

Serial #: 6625 Inside

Press @ Run Depth: 38.64 psig @ 3231.00 ft (KB)

Capacity: 8000.00 psig

Start Date: 2011.10.12 End Date: 2011.10.12

Last Calib.: 2011.10.12

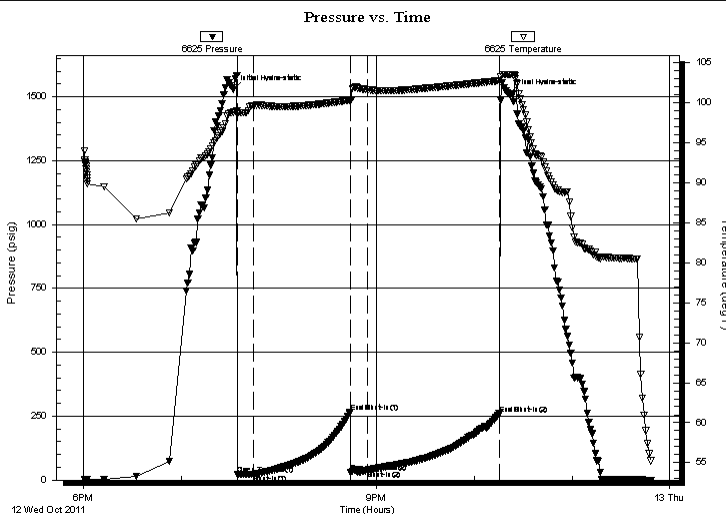
Start Time: 18:00:50 End Time: 23:48:14

Time On Btm: 2011.10.12 @ 19:32:15

Time Off Btm: 2011.10.12 @ 22:21:44

TEST COMMENT: 10-IFP-surface bl
60-ISIP-no bl bk
15-FFP-no bl
75-FSIP-no bl

PRESSURE SUMMARY



Time (Min.)	Pressure (psig)	Temp (deg F)	Annotation
0	1527.49	98.80	Initial Hydro-static
3	21.06	98.77	Open To Flow (1)
12	22.68	99.61	Shut-In(1)
72	266.90	100.30	End Shut-In(1)
72	29.63	100.28	Open To Flow (2)
82	38.64	101.61	Shut-In(2)
163	259.80	102.74	End Shut-In(2)
170	1510.46	103.50	Final Hydro-static

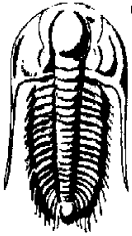
Recovery

Length (ft)	Description	Volume (bbl)
5.00	Mud	0.07

Gas Rates

Choke (inches)	Pressure (psig)	Gas Rate (Mcf/d)

* Recovery from multiple tests



TRILOBITE TESTING, INC.

DRILL STEM TEST REPORT

Samuel Gary Jr & Assoc Inc

1-18s-12w Barton

1515 Wynkoop
Ste700
Denver Co 80202
ATTN: Clayton Camozzi

Liebl #2-1

Job Ticket: 44572

DST#: 2

Test Start: 2011.10.12 @ 18:00:50

GENERAL INFORMATION:

Formation: **LKC I-J**

Deviated: No Whipstock: ft (KB)

Time Tool Opened: 19:34:45

Time Test Ended: 23:48:14

Test Type: Conventional Bottom Hole (Reset)

Tester: Ray Schwager

Unit No: 42

Interval: 3230.00 ft (KB) To 3260.00 ft (KB) (TVD)

Reference Elevations: 1843.00 ft (KB)

Total Depth: 3260.00 ft (KB) (TVD)

1835.00 ft (CF)

Hole Diameter: 7.85 inches Hole Condition: Fair

KB to GR/CF: 8.00 ft

Serial #: 8700 Outside

Press @ Run Depth: psig @ 3231.00 ft (KB)

Capacity: 8000.00 psig

Start Date: 2011.10.12

End Date:

2011.10.12

Last Calib.:

2011.10.12

Start Time: 18:01:50

End Time:

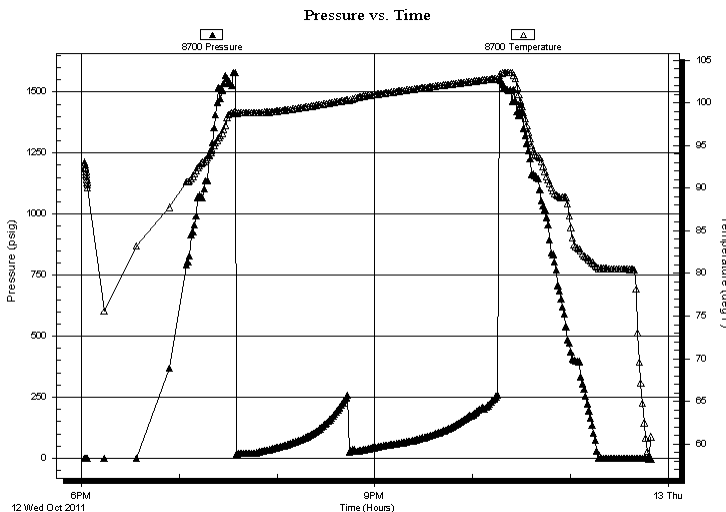
23:49:14

Time On Btm:

Time Off Btm:

TEST COMMENT: 10-IFP-surface bl
60-ISIP-no bl bk
15-FFP-no bl
75-FSIP-no bl

PRESSURE SUMMARY



Time (Min.)	Pressure (psig)	Temp (deg F)	Annotation

Recovery

Length (ft)	Description	Volume (bbl)
5.00	Mud	0.07

Gas Rates

	Choke (inches)	Pressure (psig)	Gas Rate (Mcf/d)

* Recovery from multiple tests



TRILOBITE TESTING, INC.

DRILL STEM TEST REPORT

Samuel Gary Jr & Assoc Inc

1-18s-12w Barton

1515 Wynkoop
Ste700
Denver Co 80202
ATTN: Clayton Camozzi

Liebl #2-1

Job Ticket: 44572

DST#: 2

Test Start: 2011.10.12 @ 18:00:50

GENERAL INFORMATION:

Formation: **LKC I-J**

Deviated: No Whipstock: ft (KB)

Time Tool Opened: 19:34:45

Time Test Ended: 23:48:14

Test Type: Conventional Bottom Hole (Reset)

Tester: Ray Schwager

Unit No: 42

Interval: 3230.00 ft (KB) To 3260.00 ft (KB) (TVD)

Reference Elevations: 1843.00 ft (KB)

Total Depth: 3260.00 ft (KB) (TVD)

1835.00 ft (CF)

Hole Diameter: 7.85 inches Hole Condition: Fair

KB to GR/CF: 8.00 ft

Serial #: 8374 Fluid

Press @ RunDepth: psig @ 3195.00 ft (KB)

Capacity: 8000.00 psig

Start Date: 2011.10.12 End Date: 2011.10.12

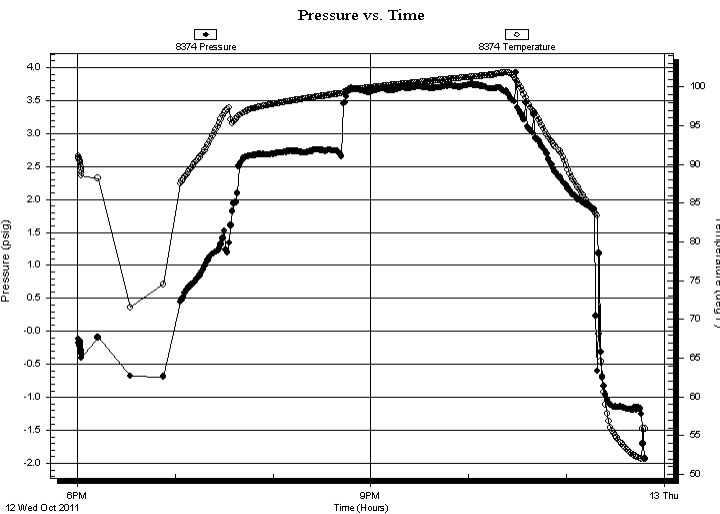
Last Calib.: 2011.10.12

Start Time: 18:00:38 End Time: 23:48:02

Time On Btm:

Time Off Btm:

TEST COMMENT: 10-IFP-surface bl
60-ISIP-no bl bk
15-FFP-no bl
75-FSIP-no bl



PRESSURE SUMMARY

Time (Min.)	Pressure (psig)	Temp (deg F)	Annotation

Recovery

Length (ft)	Description	Volume (bbl)
5.00	Mud	0.07

Gas Rates

Choke (inches)	Pressure (psig)	Gas Rate (Mcf/d)

* Recovery from multiple tests



**TRILOBITE
TESTING, INC.**

DRILL STEM TEST REPORT

TOOL DIAGRAM

Samuel Gary Jr & Assoc Inc

1-18s-12w Barton

1515 Wynkoop
Ste700
Denver Co 80202
ATTN: Clayton Camozzi

Liebl #2-1

Job Ticket: 44572

DST#: 2

Test Start: 2011.10.12 @ 18:00:50

Tool Information

Drill Pipe:	Length: 3216.00 ft	Diameter: 3.80 inches	Volume: 45.11 bbl	Tool Weight: 2200.00 lb
Heavy Wt. Pipe:	Length: 0.00 ft	Diameter: 0.00 inches	Volume: 0.00 bbl	Weight set on Packer: 25000.00 lb
Drill Collar:	Length: 0.00 ft	Diameter: 0.00 inches	Volume: 0.00 bbl	Weight to Pull Loose: 60000.00 lb
			<u>Total Volume: 45.11 bbl</u>	Tool Chased 0.00 ft
Drill Pipe Above KB:	21.00 ft			String Weight: Initial 47000.00 lb
Depth to Top Packer:	3230.00 ft			Final 47000.00 lb
Depth to Bottom Packer:	ft			
Interval between Packers:	30.00 ft			
Tool Length:	65.00 ft			
Number of Packers:	2	Diameter: 6.75 inches		

Tool Comments:

Tool Description

Tool Description	Length (ft)	Serial No.	Position	Depth (ft)	Accum. Lengths
Recorder	0.00	8374	Fluid	3195.00	
Blank Spacing	5.00			3200.00	
Change Over Sub	1.00			3201.00	
Shut In Tool	5.00			3206.00	
Sampler	2.00			3208.00	
Hydraulic tool	5.00			3213.00	
Jars	5.00			3218.00	
Safety Joint	2.00			3220.00	
Packer	5.00			3225.00	35.00 Bottom Of Top Packer
Packer	5.00			3230.00	
Stubb	1.00			3231.00	
Recorder	0.00	6625	Inside	3231.00	
Recorder	0.00	8700	Outside	3231.00	
Perforations	26.00			3257.00	
Bullnose	3.00			3260.00	30.00 Bottom Packers & Anchor

Total Tool Length: 65.00



**TRILOBITE
TESTING, INC.**

DRILL STEM TEST REPORT

FLUID SUMMARY

Samuel Gary Jr & Assoc Inc

1-18s-12w Barton

1515 Wynkoop
Ste700
Denver Co 80202
ATTN: Clayton Camozzi

Liebl #2-1

Job Ticket: 44572

DST#: 2

Test Start: 2011.10.12 @ 18:00:50

Mud and Cushion Information

Mud Type: Gel Chem

Cushion Type:

Oil API:

deg API

Mud Weight: 9.00 lb/gal

Cushion Length:

ft

Water Salinity:

ppm

Viscosity: 54.00 sec/qt

Cushion Volume:

bbbl

Water Loss: 7.94 in³

Gas Cushion Type:

Resistivity: ohm.m

Gas Cushion Pressure:

psig

Salinity: 4800.00 ppm

Filter Cake: 1.00 inches

Recovery Information

Recovery Table

Length ft	Description	Volume bbl
5.00	Mud	0.070

Total Length: 5.00 ft Total Volume: 0.070 bbl

Num Fluid Samples: 0

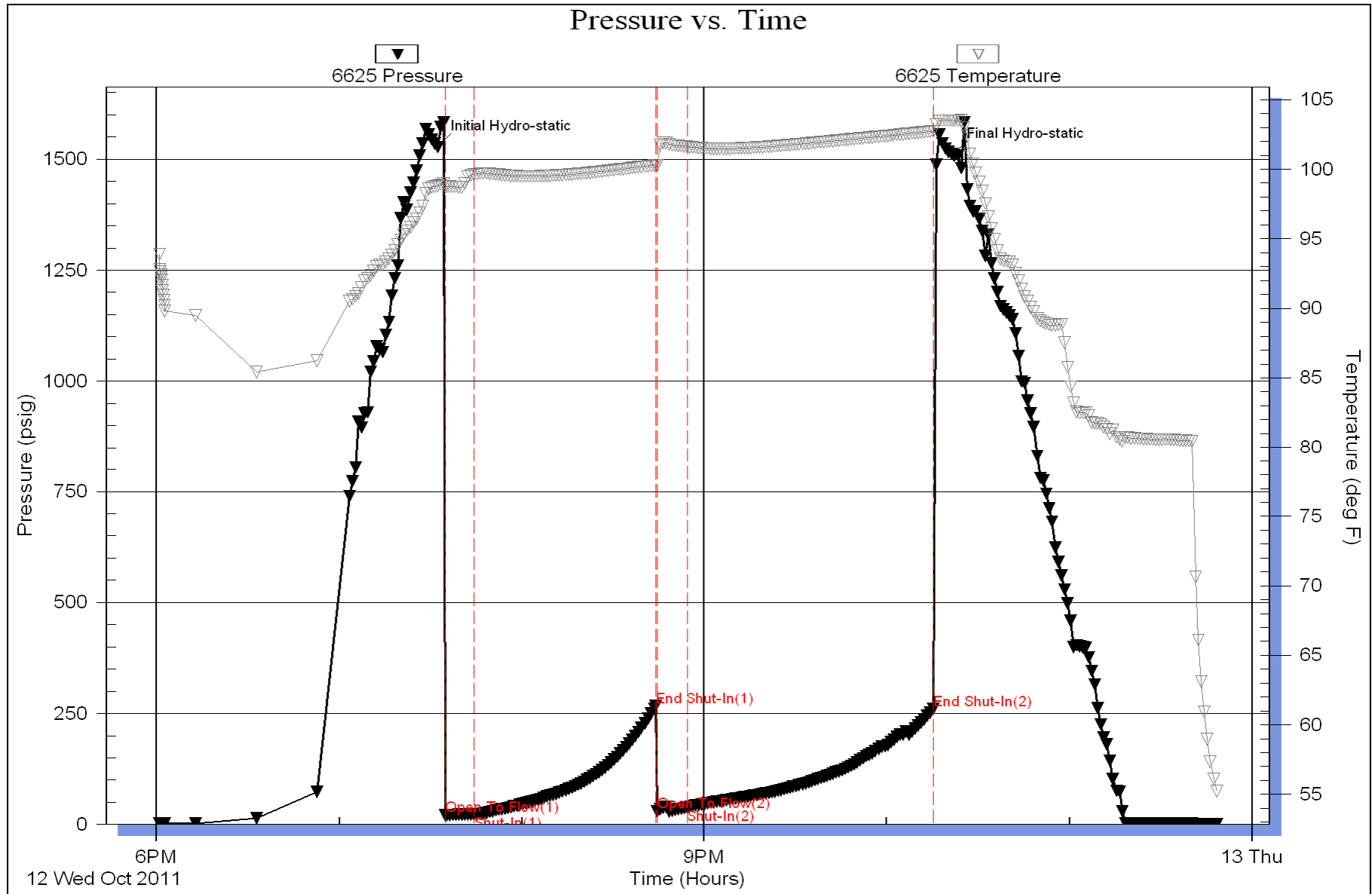
Num Gas Bombs: 0

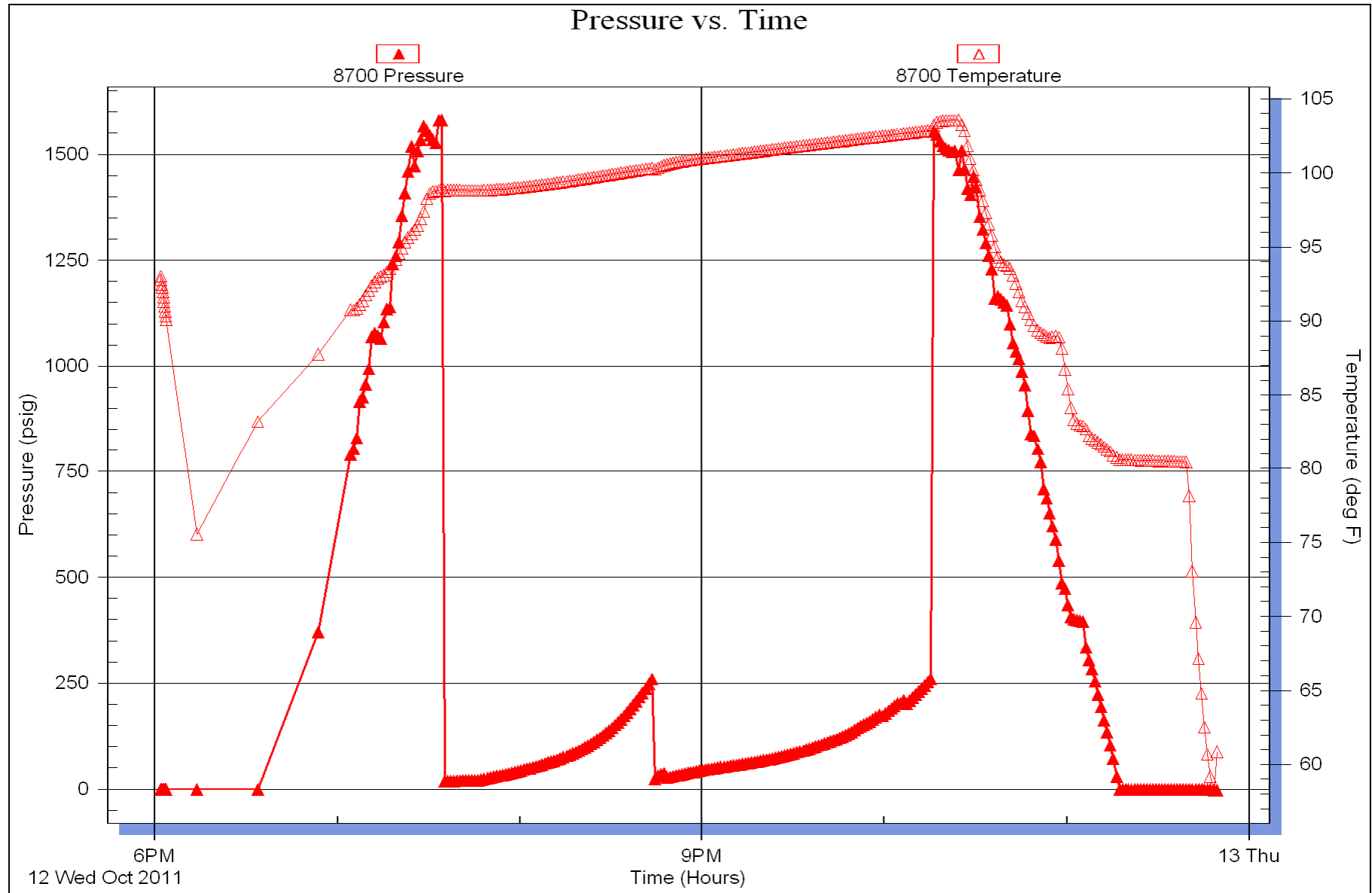
Serial #:

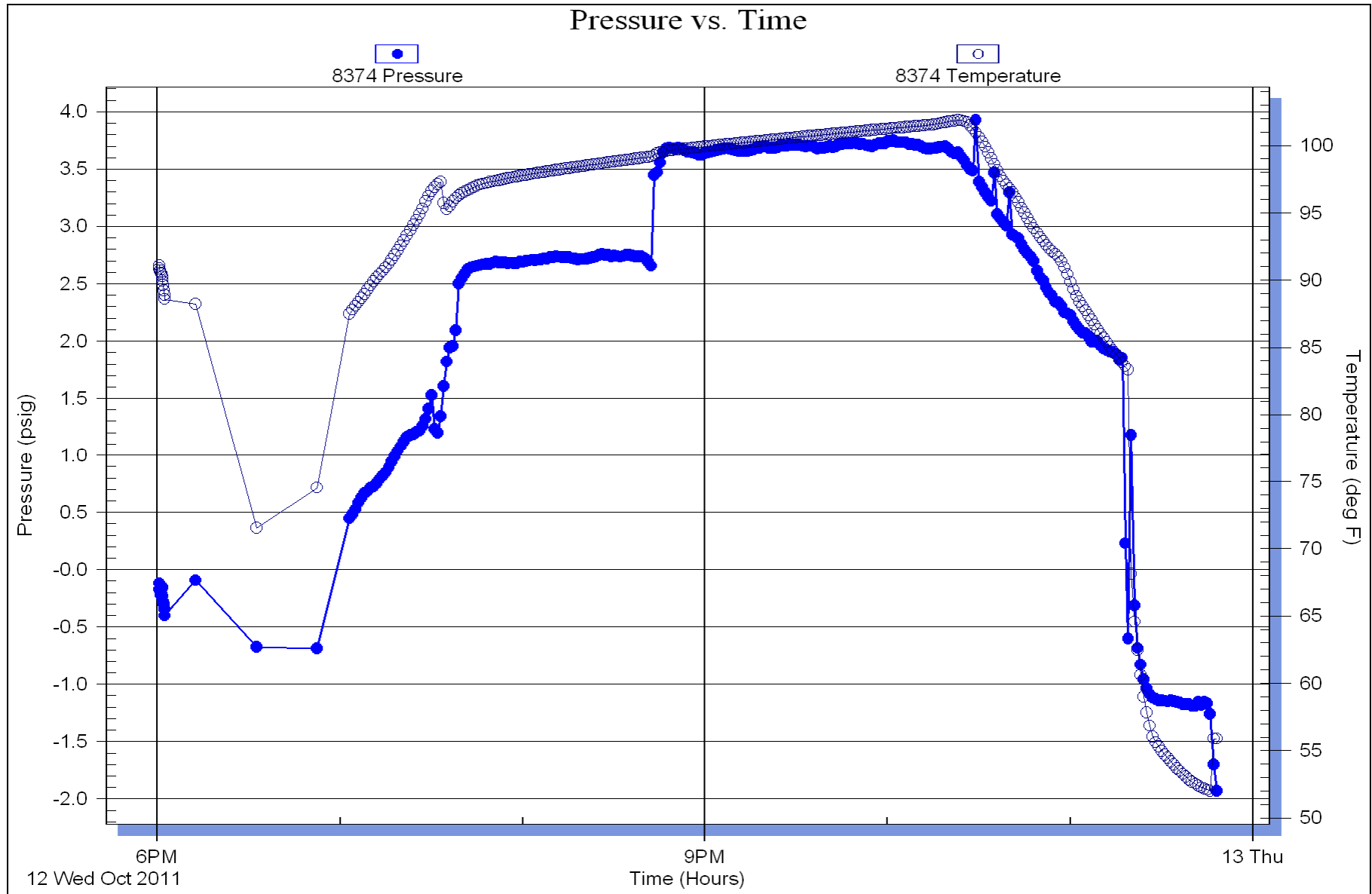
Laboratory Name:

Laboratory Location:

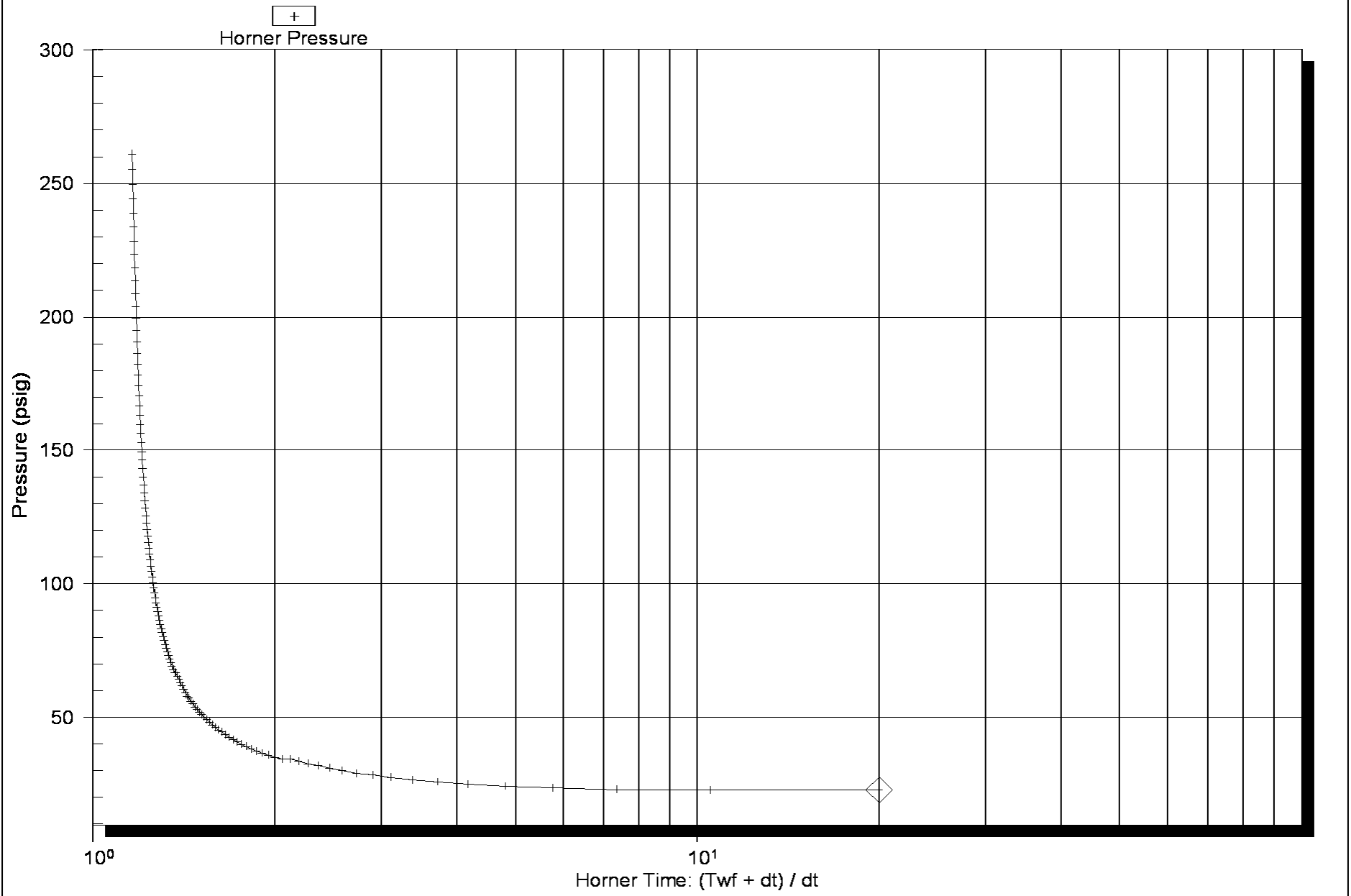
Recovery Comments: Sampler Data: 1000ML Mud PSI 40







Horner Plot



Horner Plot

