



**TRILOBITE TESTING, INC.**

# DRILL STEM TEST REPORT

Mkol Oil LLC  
 1407 Washington Ave.  
 Hays, Ks 67601  
 ATTN: Bob Stolzle

**27-10-16 Rooks, Ks**  
**Haberer 1-27**  
 Job Ticket: 44737      **DST#: 2**  
 Test Start: 2011.11.29 @ 02:10:52

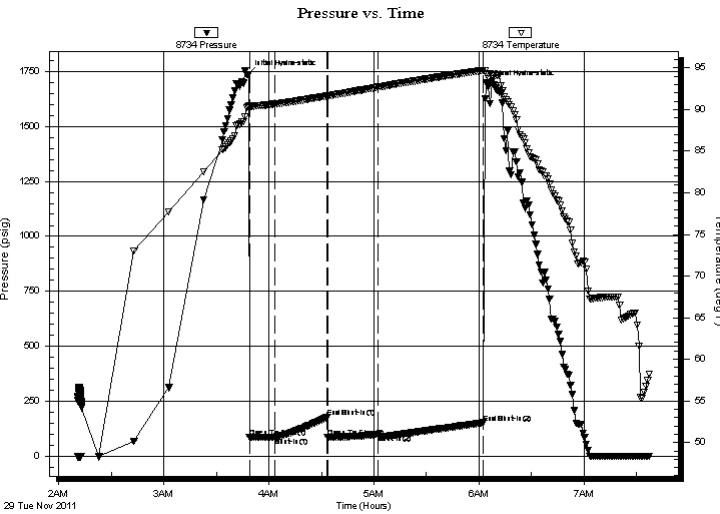
## GENERAL INFORMATION:

Formation: **LKC "H-L"**  
 Deviated: No Whipstock: ft (KB)  
 Test Type: Conventional Bottom Hole (Reset)  
 Time Tool Opened: 03:48:52  
 Tester: Brian Fairbank  
 Time Test Ended: 07:37:52  
 Unit No: 41  
 Interval: **3370.00 ft (KB) To 3510.00 ft (KB) (TVD)**  
 Reference Elevations: 2049.00 ft (KB)  
 Total Depth: 3510.00 ft (KB) (TVD)  
 2042.00 ft (CF)  
 Hole Diameter: 7.88 inches  
 Hole Condition: Good  
 KB to GR/CF: 7.00 ft

## Serial #: 8734 Outside

Press @ Run Depth: 101.97 psig @ 3373.00 ft (KB)      Capacity: 8000.00 psig  
 Start Date: 2011.11.29      End Date: 2011.11.29      Last Calib.: 2011.11.29  
 Start Time: 02:10:53      End Time: 07:37:52      Time On Btm: 2011.11.29 @ 03:47:52  
 Time Off Btm: 2011.11.29 @ 06:04:52

TEST COMMENT: IFP - weak blow throughout 1"  
 ISI - no blow back  
 FFP - no blow  
 FSI - no blow back



## PRESSURE SUMMARY

Time (Min.)	Pressure (psig)	Temp (deg F)	Annotation
0	1734.97	90.37	Initial Hydro-static
1	85.45	90.33	Open To Flow (1)
16	87.57	90.67	Shut-In(1)
45	176.23	91.64	End Shut-In(1)
46	86.98	91.63	Open To Flow (2)
75	101.97	92.70	Shut-In(2)
135	153.06	94.71	End Shut-In(2)
137	1687.88	94.24	Final Hydro-static

## Recovery

Length (ft)	Description	Volume (bbl)
10.00	DRL MUD 100%	0.05

\* Recovery from multiple tests

## Gas Rates

Choke (inches)	Pressure (psig)	Gas Rate (Mcf/d)



**TRILOBITE  
TESTING, INC.**

**DRILL STEM TEST REPORT**

**FLUID SUMMARY**

Mkol Oil LLC  
1407 Washington Ave.  
Hays, Ks 67601  
ATTN: Bob Stolzle

**27-10-16 Rooks, Ks**  
**Haberer 1-27**  
Job Ticket: 44737      **DST#: 2**  
Test Start: 2011.11.29 @ 02:10:52

**Mud and Cushion Information**

Mud Type: Gel Chem	Cushion Type:	Oil API:	deg API
Mud Weight: 9.00 lb/gal	Cushion Length: ft	Water Salinity:	ppm
Viscosity: 75.00 sec/qt	Cushion Volume: bbl		
Water Loss: 7.60 in <sup>3</sup>	Gas Cushion Type:		
Resistivity: ohm.m	Gas Cushion Pressure: psig		
Salinity: 4500.00 ppm			
Filter Cake: inches			

**Recovery Information**

Recovery Table

Length ft	Description	Volume bbl
10.00	DRL MUD 100%	0.049

Total Length: 10.00 ft      Total Volume: 0.049 bbl  
 Num Fluid Samples: 0      Num Gas Bombs: 0      Serial #:  
 Laboratory Name:      Laboratory Location:  
 Recovery Comments:

### Pressure vs. Time

