

OPERATOR

Company: Falcon Explortation, Inc.
 Address: 125 N. Market
 Suite 1252
 Wichita, KS 67202
 Contact Geologist: Brian Fisher
 Contact Phone Nbr: 316-262-1378
 Well Name: Smith #2-5
 Location: Sec 5 - T28S - R30W
 Pool: API: 15-069-20349-0000
 State: Kansas Field: Wildcat
 Country: USA

Scale 1:240 Imperial

Well Name: Smith #2-5
 Surface Location: Sec 5 - T28S - R30W
 Bottom Location:
 API: 15-069-20349-0000
 License Number: 5316
 Spud Date: 10/24/2011 Time: 00:00
 Region: Gray County
 Drilling Completed: 11/5/2011 Time: 20:30
 Surface Coordinates: 2170' FNL & 2440' FWL
 Bottom Hole Coordinates:
 Ground Elevation: 2813.00ft
 K.B. Elevation: 2826.00ft
 Logged Interval: 3400.00ft To: 5550.00ft
 Total Depth: 5550.00ft
 Formation: Mississippian
 Drilling Fluid Type: Chemical/Fresh Water Gel

SURFACE CO-ORDINATES

Well Type: Vertical
 Longitude: Latitude:
 N/S Co-ord: 2170' FNL
 E/W Co-ord: 2440' FWL

LOGGED BY

Keith Reavis
Consulting Geologist

Company: Keith Reavis, Inc.
 Address: 3420 22nd Street
 Great Bend, KS 67530
 Phone Nbr: 620-617-4091
 Logged By: KLG #136 Name: Keith Reavis

CONTRACTOR

Contractor: Sterling Drilling Company
 Rig #: 5
 Rig Type: mud rotary Time: 00:00
 Spud Date: 10/24/2011 Time: 20:30
 TD Date: 11/5/2011 Time: 00:00
 Rig Release: 11/6/2011

ELEVATIONS

K.B. Elevation: 2826.00ft Ground Elevation: 2813.00ft
 K.B. to Ground: 13.00ft

NOTES

Due to favorable results of DST #3 as well as favorable log calculations, it was determined that 5 1/2" production casing be set and cemented and the Mississippian St. Louis be further tested through perforations and stimulation.

The well samples were saved and will be available for review at the Kansas Geological Survey Well Sample Library located in Wichita, KS.

Respectfully submitted,
 Keith Reavis

Falcon Exploration, Inc.
daily drilling report

DATE	7:00 AM DEPTH	REMARKS
10/28/2011		Geologist Keith Reavis on location @ 2220 hrs, 3502 ft., drilling Stotler
10/29/2011	3716	drilling ahead, Tarkio, Bern, Topeka, Heebner
10/30/2011	4287	drilling ahead, Douglas, Lansing
10/31/2011	4727	drilling ahead, Stark, lower KC, Marmaton, Cherokee
11/01/2011	5042	drilling Cherokee, run short trip at 5050', drill Morrow, warrants DST
11/02/2011	5125	conducting DST #1, complete DST #1, resume drilling Morrow, Miss, show in Miss St. Gen, warrants DST, TOH for DST #2
11/03/2011	5226	conducting DST #2, complete, successful test, resume drilling, show and kick in St. Louis, cfs
11/04/2011	5323	warrants test, TOH and conduct and complete DST #3, successful test
11/05/2011	5397	resume drilling, TD @ 5550 ft, ctch, TOH for logs
11/06/2011	5550	conduct and complete logging operations, geologist off loc. @ 0800 hrs

Falcon Exploration, Inc.
well comparison sheet

Formation	DRILLING WELL Smith #2-5 2170' FNL & 2440' FWL Sec 5-T28S-R30W				COMPARISON WELL Smith #1-5 1460' FNL & 330' FWL Sec 5-T28S-R30W				COMPARISON WELL Josserand #1-5 380' FSL & 850' FEL Sec 5-T28S-R30W			
	Sample	Sub-Sea	Log	Sub-Sea	Log	Sub-Sea	Sample	Log	Log	Sub-Sea	Sample	Log
Stotler	3540	-714	3541	-715	3530	-698	-16	-17	3542	-719	5	4
Tarkio	3612	-786	3613	-787	3602	-770	-16	-17	3616	-793	7	6
Bern	3712	-886	3712	-886	3700	-868	-18	-18	3712	-889	3	3
Topeka	3812	-986	3810	-984	3800	-968	-18	-16	3812	-989	3	5
Heebner	4147	-1321	4146	-1320	4140	-1308	-13	-12	4151	-1328	7	8
Lansing	4245	-1419	4249	-1423	4236	-1404	-15	-19	4250	-1427	8	4
Stark	4612	-1786	4610	-1784	4590	-1758	-28	-26	4614	-1791	5	7
Marmaton	4742	-1916	4748	-1922	4738	-1906	-10	-16	4746	-1923	7	1
Pawnee	4833	-2007	4832	-2006	4822	-1990	-17	-16	4843	-2020	13	14
Cherokee	4881	-2055	4881	-2055	4870	-2038	-17	-17	4889	-2066	11	11
Morrow Sand	5081	-2255	5081	-2255	5078	-2246	-9	-9	5103	-2280	25	25
Mississippian	5146	-2320	5145	-2319	5154	-2322	2	3	5139	-2316	-4	-3
St. Lo Por	5276	-2450	5276	-2450	5284	-2452	2	2	5302	-2479	29	29
Salem	5474	-2648	5476	-2650	5474	-2642	-6	-8	5473	-2650	2	0
Total Depth	5550	-2724	5551	-2725	5552	-2720	-4	-5	5547	-2724	0	-1

Drill Stem Test #1

RICKETTS TESTING (620) 326-5830 Page 1

Company: Falcon Exploration, Inc.
 Address: 125 N. Market, Ste. 1252
 CSZ: Wichita, KS 67202
 Attn: Keith Reavis
 Lease Name: Smith (NW)
 Lease #: 2-5
 Legal Desc: NE-SE-SE-NW Job Ticket: 2170
 Section: 5 Range: 30W
 Township: 28S
 County: Gray
 Drilling Cont: Sterling Drilling Co. Rig #5
 State: KS

Comments: Legal Description Feet: 2170' FNL & 2440' FWL

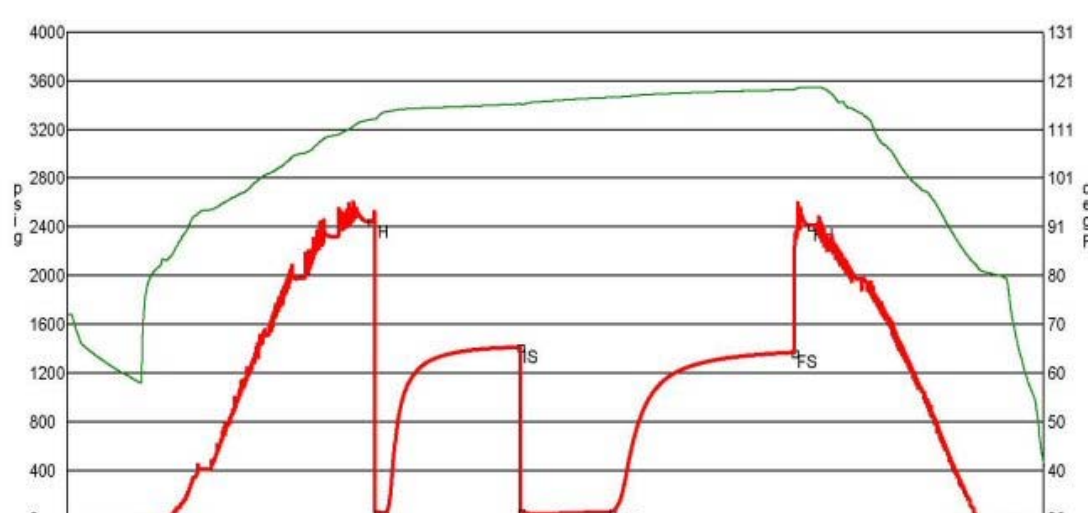
GENERAL INFORMATION

Test #1: 11/2/2011
 Tester: Tim Venters
 Test Type: Conventional Bottom Hole Successful Test
 # of Packers: 2.0 Packer Size: 6 3/4
 Mud Type: Gel Chem
 Mud Weight: 9.2 Viscosity: 56.0
 Filtrate: 8.4 Chlorides: 2400
 Drill Collar Len: 337.0
 Wght Pipe Len: 0
 Formation: Morrow
 Interval Top: 5061.0 Bottom: 5125.0
 Anchor Len Below: 64.0
 Total Depth: 5125.0
 Blow Type: Weak 1/4 inch blow at the start of the initial flow period, building to 3/4 inch hes. Very weak surface blow at the start of the final flow period, building to 1 1/2 inches. Times: 5, 90, 60, 120.

Chokes: 3/4 Hole Size: 7 7/8
 Top Recorder # W1119
 Mid Recorder # W1023
 Bott Recorder # 13310
 Mileage: 244 Approved By:
 Standby Time: 0
 Extra Equipmnt: Jars & Safety joint
 Time on Site: 9:20 PM
 Tool Picked Up: 11:25 PM
 Tool Layed Dwn: 8:50 AM
 Elevation: 2813.00 Kelley Bushings: 2826.00
 Start Date/Time: 11/2/2011 10:22 PM
 End Date/Time: 11/3/2011 9:03 AM

RECOVERY

Feet	Description	Gas	Oil	Water	Mud
30	Mud	0% Off	0% Off	0% Off	100%30ft
90	Mud with specs of oil	0% Off	0% trace	0% Off	100%90ft



Date	Time	Pressure	Temp	
IH	11/3/2011 1:40:00 AM	3.3	2444.288	112.815
IF1	11/3/2011 1:43:40 AM	3.361111	57.781	112.871
IF2	11/3/2011 1:49:20 AM	3.455556	48.601	114.358
IS	11/3/2011 3:18:30 AM	4.941667	1416.089	116.103
FF1	11/3/2011 3:19:10 AM	4.952778	64.459	115.995
FF2	11/3/2011 4:19:00 AM	5.95	63.773	117.477
FS	11/3/2011 6:28:10 AM	7.944444	1372.835	119.044
FH	11/3/2011 6:19:40 AM	8.119444	2412.334	119.514

Drill Stem Test #2

RICKETTS TESTING

(620) 326-5830

Page 1

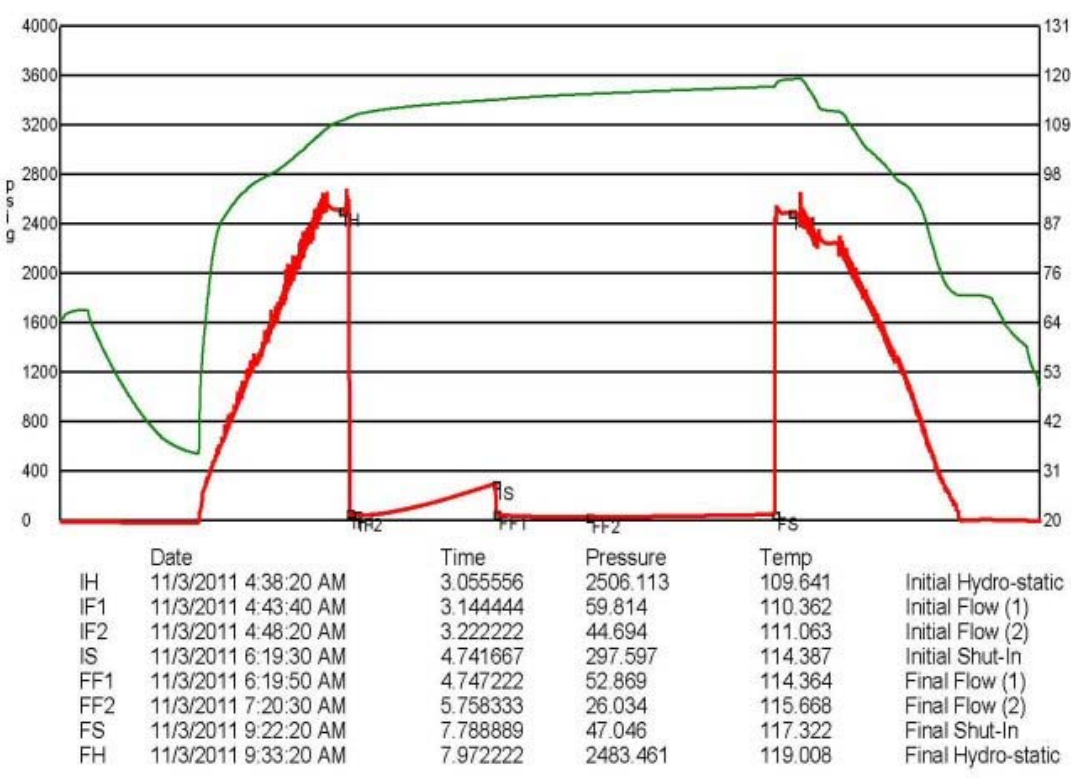
Company	Falcon Exploration, Inc.	Lease Name	Smith (NW)
Address	125 N. Market, Ste. 1252	Lease #	2-5
CSZ	Wichita, KS 67202	Legal Desc	NE-SE-SE-NW
Attn.	Keith Reavis	Section	5
		Township	28S
		County	Gray
		Drilling Cont	Sterling Drilling Co. Rig #5
Comments	Legal Description Feet: 2170' FNL & 2440' FWL		
		Job Ticket	2170
		Range	30W
		State	KS

GENERAL INFORMATION

Test #	2	Test Date	11/3/2011	Chokes	3/4	Hole Size	7 7/8
Tester	Tim Venters			Top Recorder #	W1119		
Test Type	Conventional Bottom Hole			Mid Recorder #	W1023		
	Successful Test			Bot Recorder #	13310		
# of Packers	2.0	Packer Size	6 3/4	Mileage	88	Approved By	
Mud Type	Gel Chem			Standby Time	0		
Mud Weight	9.3	Viscosity	48.0	Extra Equipmnt	Jars & Safety joint		
Filtrate	7.6	Chlorides	2500	Time on Site	11:45 PM		
Drill Collar Len	337.0			Tool Picked Up	2:45 AM		
Wght Pipe Len	0			Tool Layed Dwn	12:00 PM		
Formation	Mississippian			Elevation	2813.00	Kelley Bushings	2826.00
Interval Top	5148.0	Bottom	5226.0	Start Date/Time	11/3/2011 1:35 AM		
Anchor Len Below	78.0	Between	0	End Date/Time	11/3/2011 12:16 PM		
Total Depth	5226.0						
Blow Type	Weak 1/4 inch blow throughout the initial flow period. Very weak surface blow throughout the final flow period. Times: 5, 90, 60, 124						

RECOVERY

Feet	Description	Gas	Oil	Water	Mud
20	Mud	0% Off	0% Off	0% Off	100% 20ft



Drill Stem Test #3

RICKETTS TESTING

(620) 326-5830

Page 1

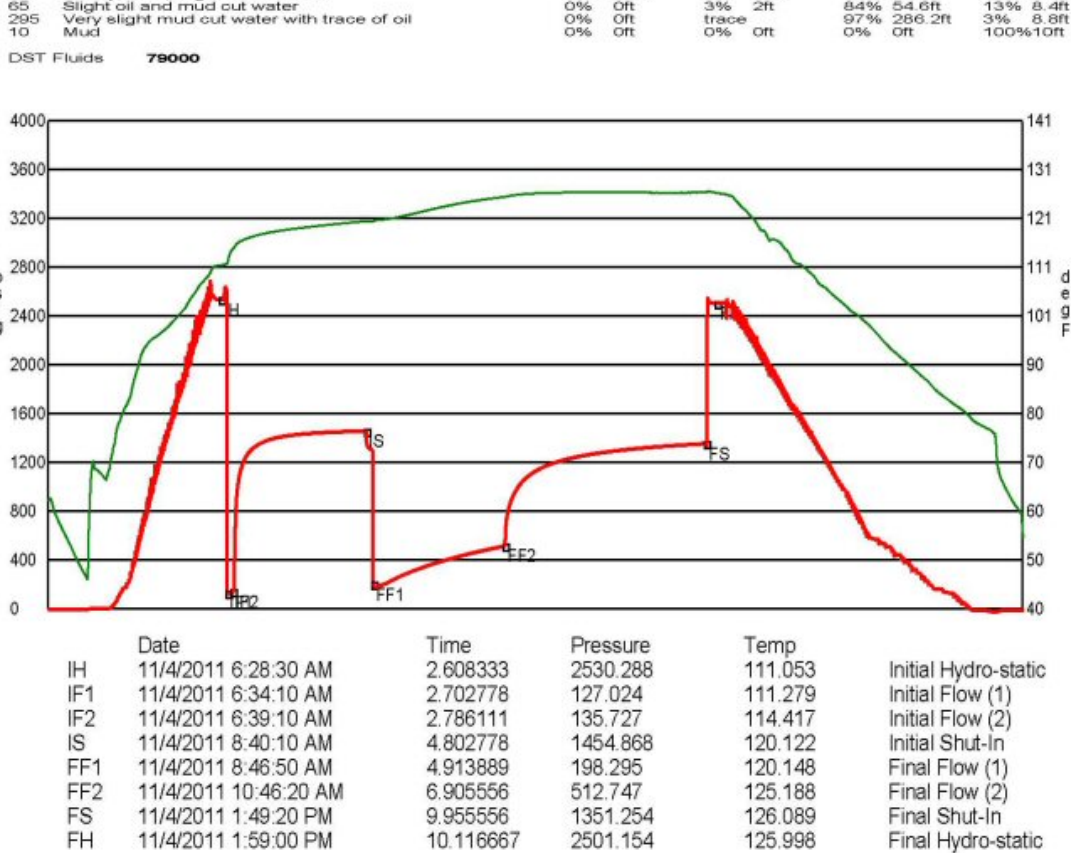
Company	Falcon Exploration, Inc.	Lease Name	Smith (NW)
Address	125 N. Market, Ste. 1252	Lease #	2-5
CSZ	Wichita, KS 67202	Legal Desc	NE-SE-SE-NW
Attn.	Keith Reavis	Section	5
		Township	28S
		County	Gray
		Drilling Cont	Sterling Drilling Co. Rig #5
Comments	Legal Description Feet: 2170' FNL & 2440' FWL		
		Job Ticket	2170
		Range	30W
		State	KS

GENERAL INFORMATION

Test #	3	Test Date	11/4/2011	Chokes	3/4	Hole Size	7 7/8
Tester	Tim Venters			Top Recorder #	W1119		
Test Type	Conventional Bottom Hole			Mid Recorder #	W1022		
	Successful Test			Bot Recorder #	13310		
# of Packers	2.0	Packer Size	6 3/4	Mileage	88	Approved By	
Mud Type	Gel Chem			Standby Time	0		
Mud Weight	9.3	Viscosity	48.0	Extra Equipmnt	Jars & Safety joint		
Filtrate	7.2	Chlorides	2350	Time on Site	2:45 AM		
Drill Collar Len	337.0			Tool Picked Up	4:45 AM		
Wght Pipe Len	0			Tool Layed Dwn	6:30 PM		
Formation	Mississippian St. Louis			Elevation	2813.00	Kelley Bushings	2826.00
Interval Top	5270.0	Bottom	5323.0	Start Date/Time	11/4/2011 3:52 AM		
Anchor Len Below	53.0	Between	0	End Date/Time	11/4/2011 6:37 PM		
Total Depth	5323.0						
Blow Type	Strong blow throughout the initial flow period, reaching the bottom of the bucket in 1 minute. Gas to surface: 70 minutes, but was too small to measure. Weak 1/4 inch blow back at the start of the initial shut-in period, building to 3 inches. Strong blow throughout the final flow period, reaching the bottom of the bucket in 1 1/2 minutes. Weak surface blow back after we bled line off, building, reaching the bottom of the bucket in 13 minutes. Times: 5, 120, 126, 182. Oil Gravity: 28.						

RECOVERY

Feet	Description	Gas	Oil	Water	Mud
3980	Gas in Pipe	100% 3980ft	0% Off	0% Off	0% Off
705	Gassy oil	5% 35.2ft	95% 669.8ft	0% Off	0% Off
125	Gassy, water and mud cut oil	15% 18.8ft	49% 61.2ft	13% 16.2ft	23% 28.8ft
65	Gassy, mud, slight oil cut water	10% 6.5ft	7% 4.6ft	60% 39ft	23% 15ft
65	Slight oil and mud cut water	0% Off	3% 2ft	84% 54.6ft	13% 8.4ft
295	Very slight mud cut water with trace of oil	0% Off	trace	97% 286.2ft	3% 8.8ft
10	Mud	0% Off	0% Off	0% Off	100% 10ft



ROCK TYPES

	Dolprim		Lmst fw<7		shale, gry		Ss
	Dolsec		Lmst fw>7		Carbon Sh		
	sdy lmst		shale, grn		shale, red		

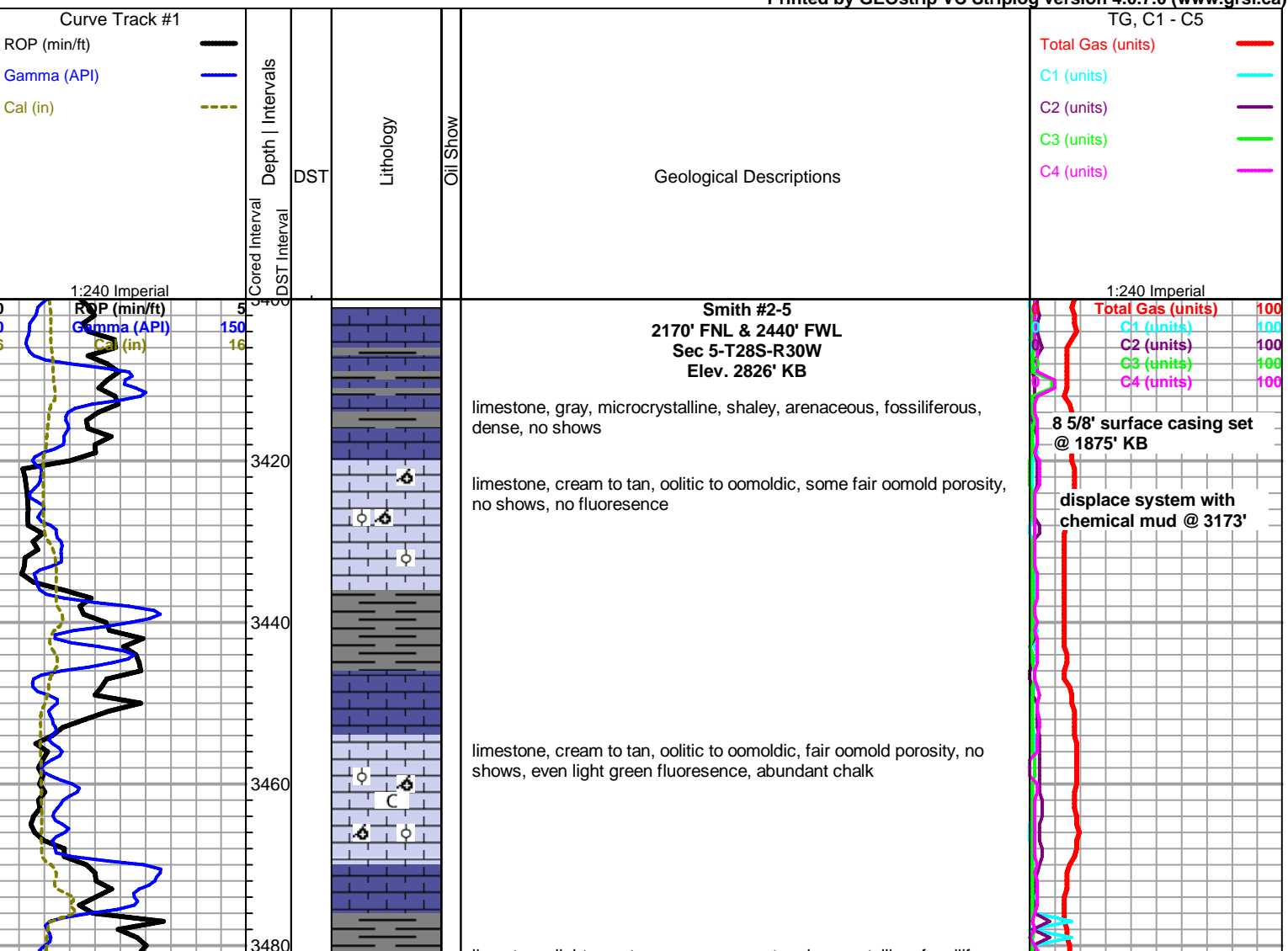
ACCESSORIES

MINERAL	FOSSIL	STRINGER	TEXTURE
- Argillaceous	∩ Bioclastic or Fragmental		C Chalky
▲ Chert, dark	∩ Bryozoa		L Lithogr
▲ Dolomitic	F Fossils < 20%		
∩ Glaucanite	∩ Oolite		
× Mineral Crystals	∩ Pellets		
P Pyrite	∩ Oomoldic		
• Sandy			
△ Chert White			

OTHER SYMBOLS

MISC	DST
	DST Int
	DST alt
	Core

Printed by GEOstrip VC Striplog version 4.0.7.0 (www.grsi.ca)



chalky to dense, poor visible porosity, trace pyritic, some chalk, no shows, scattered fluorescence

3500

3520

3540

3560

3580

3600

3620

3640

3660

3680

3700

3720

3740

3760

3780

3800

3820

3840

3860

3880

3900

3920

3940

3960

3980

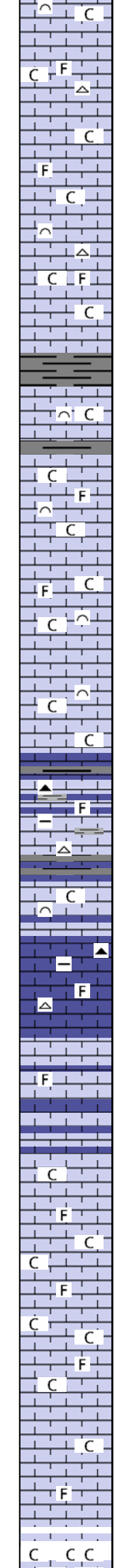
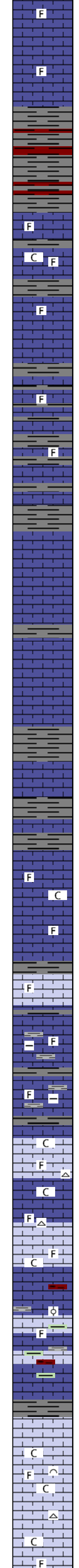
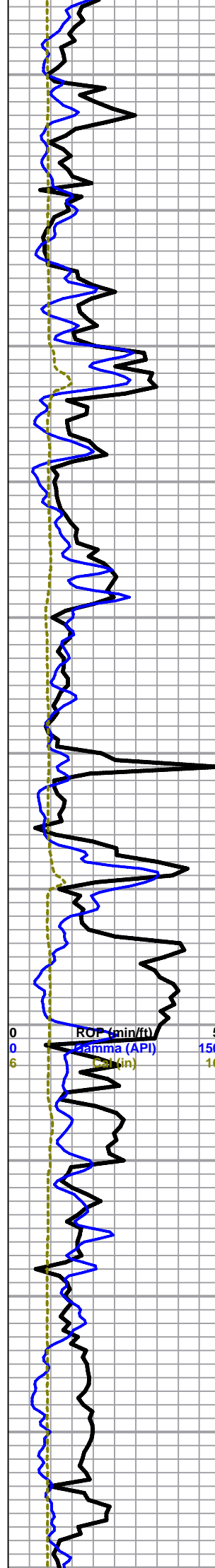
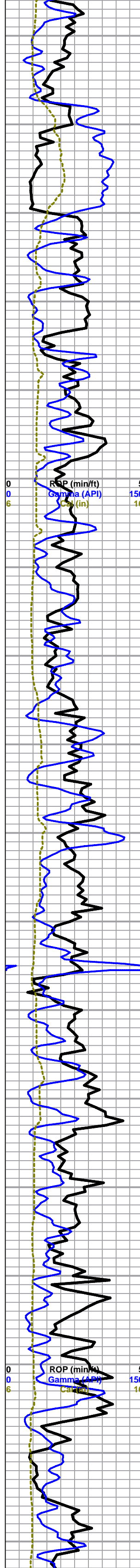
4000

4020

4040

4060

4080



Stotler 3540 -714

limestone, cream to light gray to pale green, crypto-microcrystalline, dense, fossiliferous, some mottled weathered chalky fossiliferous, , no shows, light green fluorescence

limestone, cream to white, microcrystalline, slightly fossiliferous, some secondary calcite, poor visible porosity, no shows, faint fluorescence

limestone, gray to gray/green, cryptocrystalline, dense, some fossiliferous, some arenaceous, with limestone, cream, cryptocrystalline, chalky, slightly fossiliferous, some mixed shales

Tarkio 3612 -786

limestone, gray/green to cream, cryptocrystalline, dense, arenaceous, some secondary calcite, no shows, faint fluorescence

limestone as above

limestone, light gray, cryptocrystalline, chalky, with limestone, mixed gray, cryptocrystalline, dense, fossiliferous, no shows

Bern 3712 -886

limestone, tan, microcrystalline, fossiliferous, some vugs, with limestone, gray, mottled, very fossiliferous, some large clasts, poor visible porosity, no shows

limestone, gray, microcrystalline, argillaceous, with gray limey shales

limestone, cream to white to light gray, microcrystalline, fossiliferous, fairly chalky, poor visible porosity, no shows, some scattered white cherts

limestone, cream to light gray, mixed fossiliferous, chalky, some oolitic, with limestone, gray, dense fossiliferous, abundant mixed shales

Topeka 3812 -986

limestone, light gray to white, chalky fossiliferous to bioclastic, poor visible porosity, no shows, 20-30% chalk, some white scattered cherts, no shows

limestone and chalk as above

as above, increasing chalk

limestone, light gray to white, microcrystalline, chalky, bioclastic to fossiliferous, some scattered pinpoint porosity, no shows, abundant chalk in samples 30%+

as above

as above, with limestone, gray grainy, shaley, argillaceous, dark gray chalky, some gray silty shale, gray to white cherts

Lecompton

as above, abundant chalk

limestone, cream to gray, microcrystalline, chalky, fossiliferous, no shows

limestone, cream to gray, micro-cryptocrystalline, grainy, fossiliferous, chalky, no shows, appx 30-40% chalk

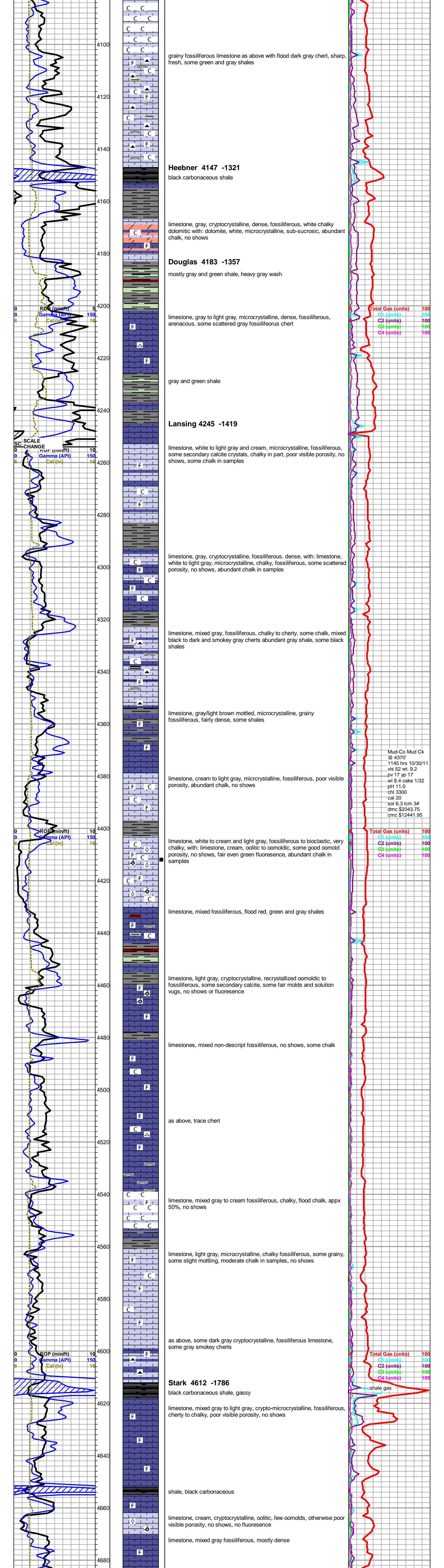
chalk, appx 60% of samples, with limestone as above

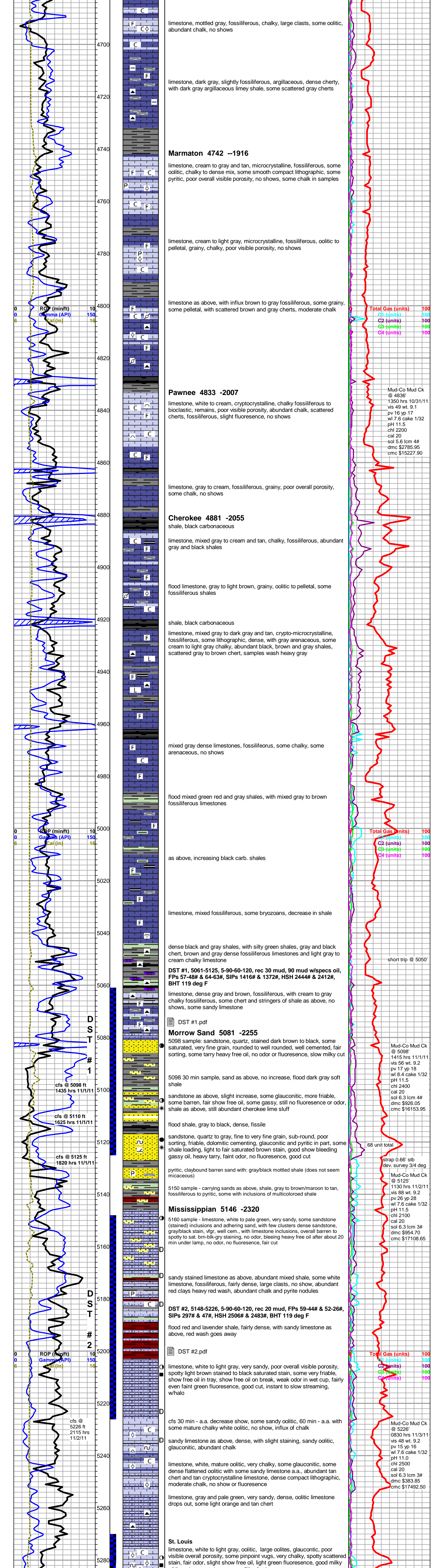
Total Gas (units)	100
C1 (units)	100
C2 (units)	100
G3 (units)	100
C4 (units)	100

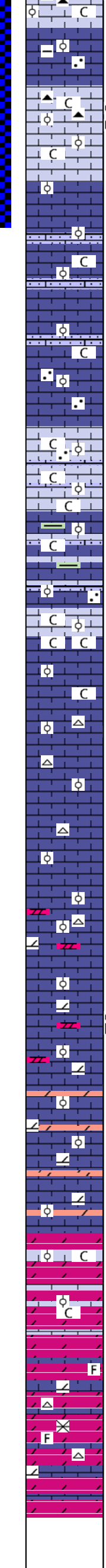
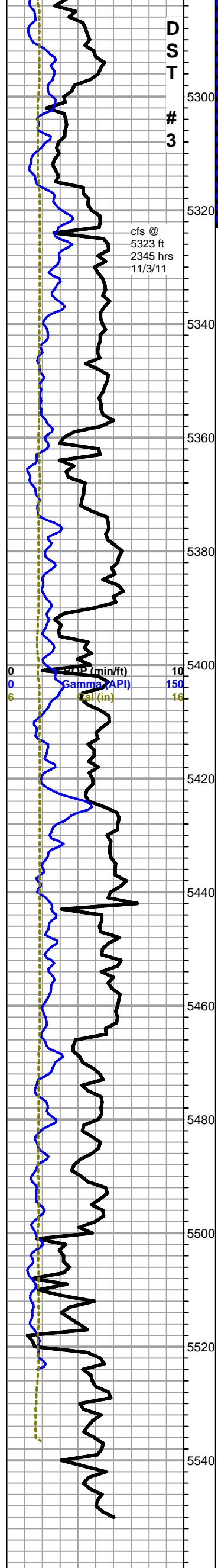
Total Gas (units)	100
C1 (units)	100
C2 (units)	100
G3 (units)	100
C4 (units)	100

Total Gas (units)	100
C1 (units)	100
C2 (units)	100
G3 (units)	100
C4 (units)	100

Mud-Co Mud Ck
@ 3775'
0845 hrs 10/29/11
vis 47 wt.8.9
pv 14 yp 15
wl 8.4 cake 1/32
pH 10.0
chl 3600
cal 20
sol 4.8 lcm2#
dmc \$66.15
cmc \$10398.20







white cut, orange, tan - gray oolitic chert

limestone, gray, microcrystalline, arenaceous to argillaceous, some chalky mostly dense, some oolitic, dense

limestone, white to cream oolitic, no apparent stain, chalky, poor visible porosity, some friable with show light oil droplets on break, with limestone, microcrystalline arenaceous, friable, couple pieces with spotty stain and slight show free oil, fair cut on both facies, some free oil drops and fair odor in wet cup, flood chert in upper part of porosity, white to gray oolitic to fossiliferous, gray/black speckled, abundant chalk

DST #3.pdf

limestone, light gray to cream, mostly cryptocrystalline dense oolitic, glauconitic, abundant argillaceous-sandy, some chalky, no shows

DST #3, 5270-5323, 5-120-120-180, rec GTS tstm @ 70 min, 705' CGO, 125'GWCMO, 130' O&MCW, 295' SMCW, tr oil, 10 mud, FPs 127-135# & 198-512#, SIPs 1454# & 1351#, HSH 2530# & 2501#, BHT 125 deg F

a.a., grading to more mature chalky oolitic, some sandy with large sand grains and abundant glauconite

limestone, light gray to white, oolitic, mostly mature, very chalky, some sandy, some friable, poor visible porosity, no shows, odor or fluorescence, flood chalk in samples

limestone, mixed oolitic, flattened to mature, chalky to dense to sandy, moderate chalk in samples, some pale green shales

oolitic limestone as above, flood chalk, no shows

limestone, mixed gray to tan oolitic, dense and flattened, no shows, with: chert, light gray to tan, some oolitic, dense, fresh

as above, some chalk increase, chert drops decrease, some scattered gray microcrystalline dolomite

5470 as above, 1 rock, oolitic, mature, show with stain sl sfo, no, slow cut, heavy clingy free oil, no odor or free oil or other shows in wet cup

Salem 5474 -2648

limestone as above with: some light gray/blk speckled arenaceous dolomite

as above with limestone, dolomitic, dark brown, cryptocrystalline, lithographic, dense, some fossiliferous

dolomite, limey, gray mottled, fossiliferous to oolitic, some oolitic limestone weathered to chalk, dolomite, brown, crypt, grainy, oolitic to fossiliferous, dense, no shows

dolomite, gray/green to light gray, microcrystalline, arenaceous, dense, with dolomite to dolomitic limestone, mixed, gray to tan, some brown, fossiliferous, some grainy, mostly dense, some mixed chert and scattered large dolomite crystals, no shows

Rotary TD @ 5550 ft. 2030 hrs 11/5/11
Log Tech TD @ 5551 ft
complete logging operations @ 11/6/11

