

LITHOLOGY STRIP LOG

WellSight Systems

Scale 1:240 (5"=100') Imperial

Well Name: Jungemann #1-28
Location: 1656' FNL & 1117' FEL, Sec. 28-T27S-R18W, Kiowa Co., KS.
Licence Number: 15-097-21707
Spud Date: 9/13/2011
Surface Coordinates: 1656' FNL & 1117' FEL, NE 1/4, Sec. 28-T27S-R18W
Region: Wildcat
Drilling Completed: 9/24/2011

Bottom Hole Same as above
Coordinates:
Ground Elevation (ft): 2184' K.B. Elevation (ft): 2195'
Logged Interval (ft): 3200 To: 4870' Total Depth (ft): 4870'
Formation: Viola at Total Depth
Type of Drilling Fluid: Freshwater/Gel to 3015'; Chemical Mud 3015' to 4870'

Printed by MUD.LOG from WellSight Systems 1-800-447-1534 www.WellSight.com

OPERATOR

Company: Strata Exploration, Inc.
Address: P.O. Box 401
Fairfield, IL. 62837-0401

GEOLOGIST

Name: Jon D. Christensen
Company: Consulting Petroleum Geologist
Address: 9002 W. Silver Hollow St.
Wichita, KS. 67205-8856

Cores

None Taken

DSTs

DST #1(Lansing 'A') 4187' - 4204'(Corrected Depths to Log) Test Times 15"-45"-30"-60" IFP Fair Blow built to 13", FFP Fair Blow built to 5.5", no Blowback on SI's; REC: 180' Gas in Pipe, 60' OCM(4%O, 96%M), no Water; IFP 19-30#, ISIP 571#, FFP 34-45#, FSIP 699# and Building, IHP 2051#, FHP 1983#, BHT 112 Deg. F.

DST #2(K.C. 'I' zone) 4382' - 4400'(Corrected Depths to Log) Test Times 15"-45"-45"-90" IFP Weak Blow built to 1.25", FFP Weak building Blow, built to 5.5", no Blowback on SI's; REC: 150' Gas in Pipe, 30' SOCM(2%O, 98%M), no water; IFP 18-25#, ISIP 1286#, FFP 26-37#, FSIP 1331#, IHP 2114#, FHP 2087#, BHT 116 Deg. F.

DST #3(Cherokee/Mississippi Chert) 4718' - 4754'(Corrected Depths to Log) Test Times 15"-45"-45"-90" IFP Fair Blow 4" building to 10"; FFP Fair Blow building to BOB/23 Min., no Gas To Surface, no Blowback on SI's; REC: 340' Gas in Pipe, 35' DM w/oil specks, no water; IFP 21-25#, ISIP 213#, FFP 22-27#, FSIP 762#, IHP 2360#, FHP 2319#, BHT 119 Deg. F.

DST #4(Kinderhook Sandstone) 4788' - 4806'(Corrected Depths to Log) Test Times 15"-45"-45"-90" IFP Weak 2" Blow, FFP Weak 2.5" Blow, no Blowback on SI's; REC: 95' Gas in Pipe, 35' VSOCM(1%O, 99%M), good show of free oil in top of test tool, no water; IFP 19-24#, ISIP 160#, FFP 23-30#, FSIP 297# - building at 40 Deg. angle; IHP 2361#, FHP 2310#, BHT 122 Deg. F.

Comments

9/13/11 MIRU Sterling Drilling Co. Rig #2, Spud at 4:00 PM; 9/14/11 TD. 567' - WOC; 9/15/11 Drilling at 1350'; 9/16/11 Drilling at 2455'; 9/17/11 Drilling at 3112'; 9/18/11 Drilling at 3642'; 9/19/11 Drilling at 4150'; 9/20/11 Drilling at 4208'; 9/21/11 TD. 4404' - TIH after DST #2; 9/22/11 Drilling at 4724'; 9/23/11 TD. 4800' - CFS; 9/24/11 RTD. 4870' - TOH for Logs; 9/25/11 RTD. 4870' / LTD. 4866' - Running 5 1/2" Production Casing.

Set 8 5/8" (24#) Surface Casing at 562' w/350 sx. cement(Allied Cementing Co.). Cement did Circulate. PD. 7:00 AM. 9/14/11.

Set new 5 1/2"(15.5#) Production Casing at 4864'. Cement with 200 sx. "Strata Blend" cement(Basic Energy Services). PD. 10:30 AM. on 9/25/11.

Surveys: 0.25 Deg. at 567'(Surface Casing); 0.75 Deg. at 4208'(DST #1); 0.75 Deg. at 4758'(DST #3); 1.50 Deg. at 4870' RTD.

Pipe Strap for DST #1: Strap 0.10' Short to the Board, no correction made to the Board.

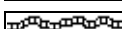
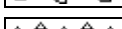
During Rig Service at 4164', the drawworks engine would not restart. Subsequently, the drillpipe became stuck. 50 Bbl. of oil was spotted on bottom, which freed the pipe and drilling operations resumed. The Gas Detector was affected by the oil in the mud system, resulting in a relatively high gas background/erratic gas readings throughout the remainder of the well.

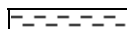

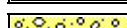

After review of the Halliburton Logs, DST data, structural position, and lease situation, the operator elected to set new 5 1/2" Production Casing for completion in the Kinderhook Sand and Mississippi Chert zones. Prior to abandonment of the well, the KC. 'I' zone should be perforated and tested from 4392' - 4396', and the Lansing 'A' zone should also be tested from 4190' - 4194'(Log depths).





LOG TOPS: Chase 2421(-226), Stotler Lmst. 3378(-1183), Howard 3579(-1384), Heebner Shale 4026(-1831), Toronto 4040(-1845), Brown Lmst. 4174(-1979), Lansing 'A' 4184(-1989), L/KC 'H' 4341(-2146), KC 'I' 4390(-2195), Swope 4481(-2286), Hertha 4537(-2342), Base Kansas City 4570(-2375), Marmaton 4612(-2417), Pawnee 4660(-2465), Cherokee Shale 4694(-2499), Miss. Chert 4733(-2538), Kinderhook Shale 4757(-2562), Kinderhook Sand 4786(-2591), Viola 4854(-2659).

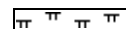
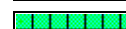

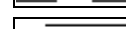
NOTE: This log was shifted upward by 3-4' for correlation purposes with the Halliburton LOGS.



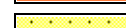

ROCK TYPES

| | |
|--|------|
|  | Anhy |
|  | Bent |
|  | Brec |
|  | Cht |

| | |
|---|-------|
|  | Clyst |
|  | Coal |
|  | Congl |
|  | Dol |

| | |
|---|------|
|  | Gyp |
|  | Igne |
|  | Lmst |
|  | Meta |

| | |
|--|-------|
|  | Mrlst |
|  | Salt |
|  | Shale |
|  | Shcol |

| | |
|---|--------|
|  | Shgy |
|  | Siltst |
|  | Ss |
|  | Till |

ACCESSORIES

- MINERAL**
- Anhy
 - Arggrn
 - Arg
 - Bent
 - Bit
 - Breclfrag
 - Calc
 - Carb
 - Chtdk
 - Chtlt
 - Dol
 - Feldspar
 - Ferrpel
 - Ferr
 - Glau

- Gyp
- Hvymin
- Kaol
- Marl
- Minxl
- Nodule
- Phos
- Pyr
- Salt
- Sandy
- Silt
- Sil
- Sulphur
- Tuff

- FOSSIL**
- Algae
 - Amph
 - Belm
 - Bioclst
 - Brach
 - Bryozoa
 - Cephal
 - Coral
 - Crin
 - Echin
 - Fish
 - Foram
 - Fossil
 - Gastro
 - Oolite

- Ostra
- Pelec
- Pellet
- Pisolite
- Plant
- Strom

- STRINGER**
- Anhy
 - Arg
 - Bent
 - Coal
 - Dol
 - Gyp
 - Ls
 - Mrst

- Siltstrg
- Ssstrg

- TEXTURE**
- Boundst
 - Chalky
 - Cryxln
 - Earthy
 - Finexln
 - Grainst
 - Lithogr
 - Microxln
 - Mudst
 - Packst
 - Wackest

OTHER SYMBOLS

- POROSITY**
- Earthy
 - Fenest
 - Fracture
 - Inter
 - Moldic
 - Organic
 - Pinpoint

- Vuggy
- SORTING**
- Well
 - Moderate
 - Poor

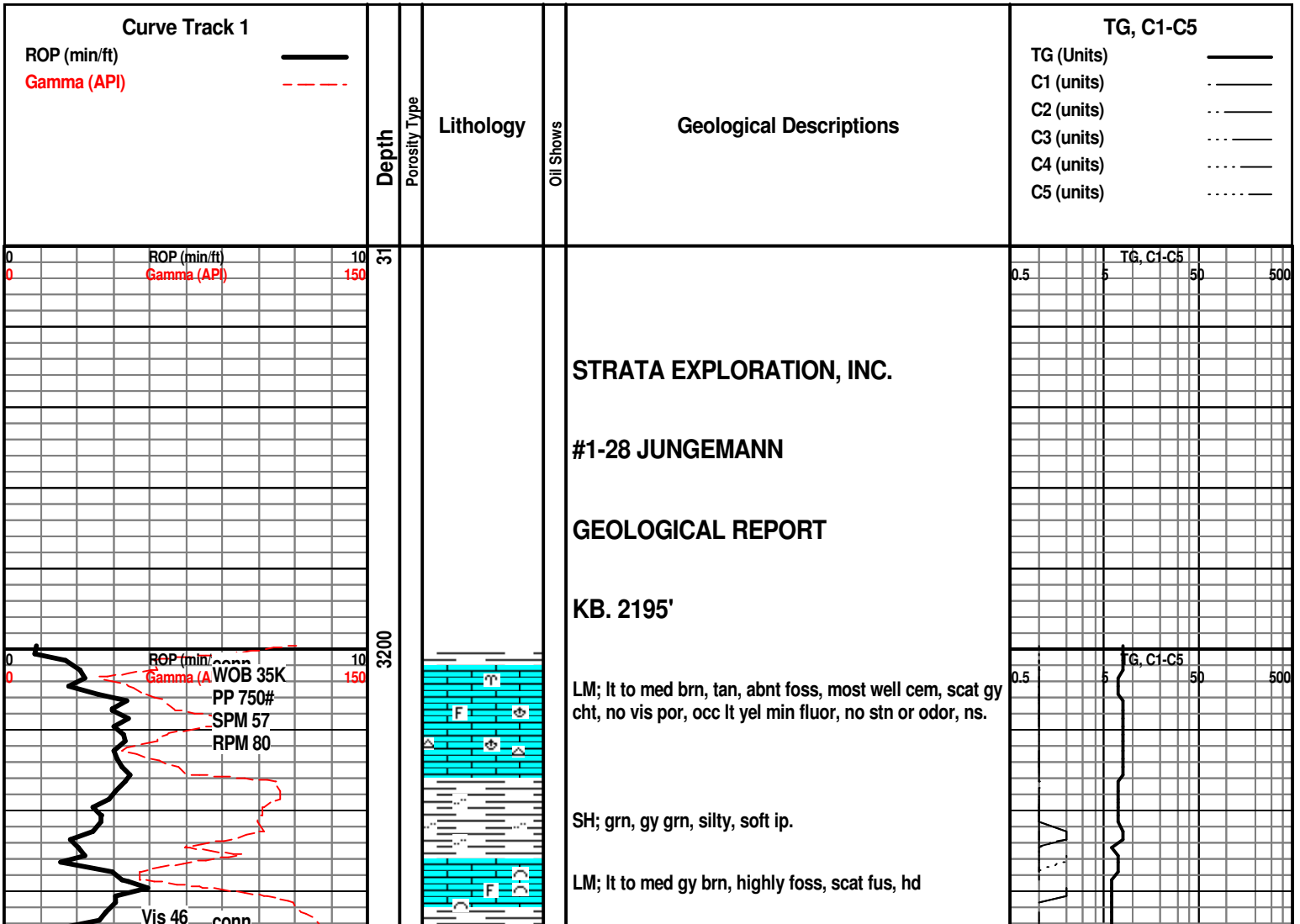
- ROUNDING**
- Rounded
 - Subrnd
 - Subang
 - Angular

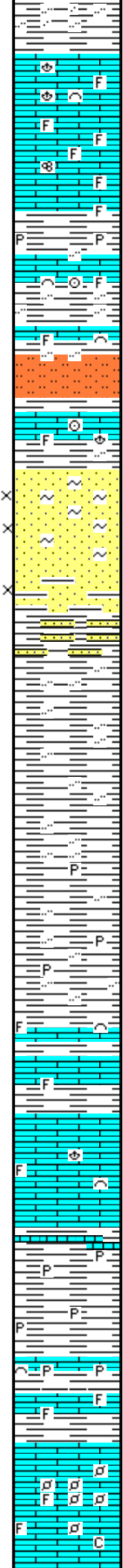
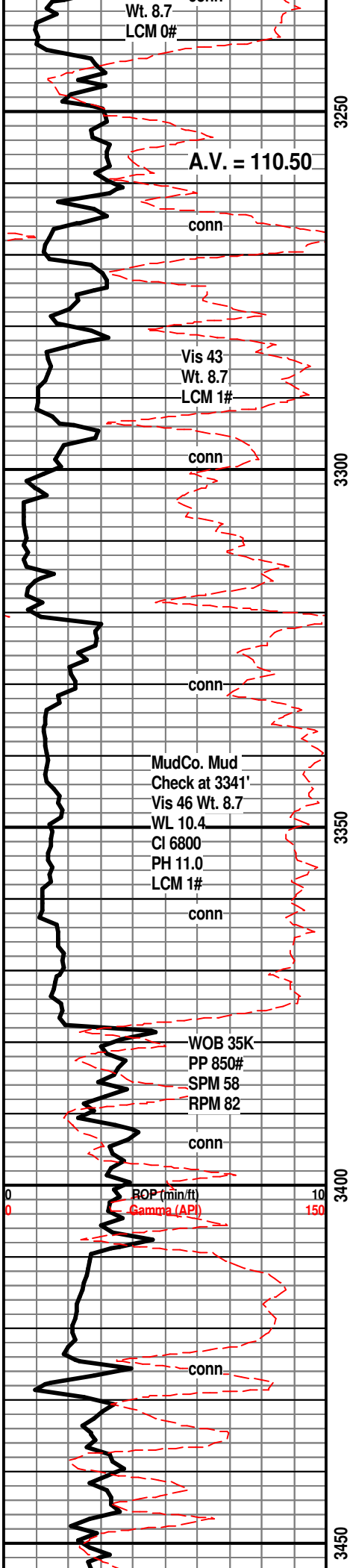
- OIL SHOW**
- Even

- Spotted
- Ques
- Dead

- INTERVAL**
- Core
 - Dst

- EVENT**
- Rft
 - Sidewall



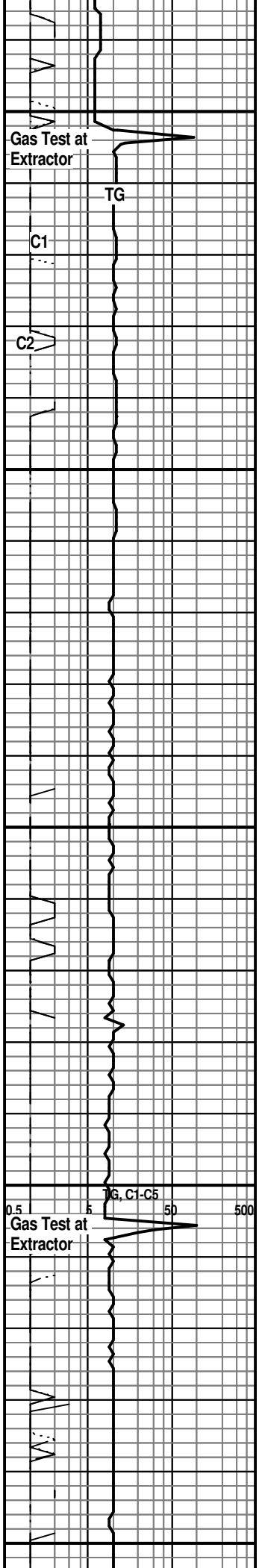


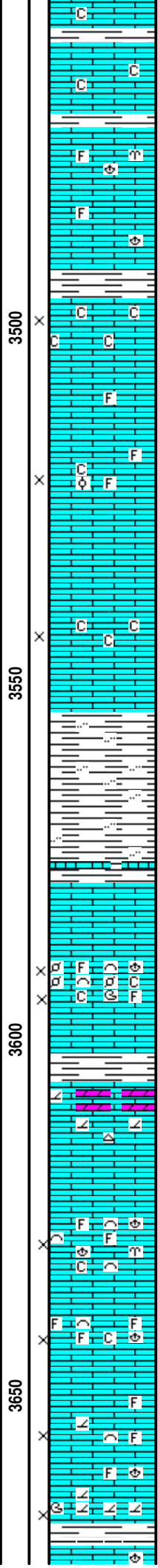
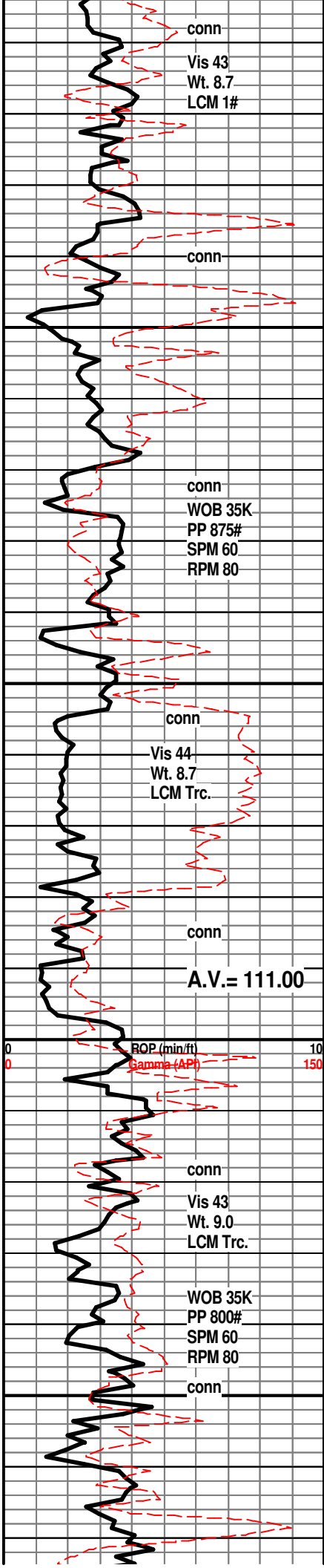
SH; lt to med gy, silty to sandy, firm to soft

WABAUNSEE 3242(-1047)
LM; med gy brn, med brn, dense, blocky, scat well cem foss mat, occ lt yel min fluor, no stn or odor, no gas kick, ns.
LM; off wh, tan, buff, foss, well cem, lt to occ med yel min fluor, minor chalky soft mtx, ns.
SH; med to dk gy, pyr ip, firm
LM; off wh to tan, lt brn, most dense, scat well cem foss, interbdd gy to dk gy grn occ silty shales, ns.
SH; med gy to gy grn, silty, interbdd sltst, soft
LM; med to dk brn, hd, foss ip, tite

LANGDON SS 3300(-1105)
SS; lt gy, clr, pale grn, most f gr qtz, clusters, fri, gd intergran por, glau, rarely mica, some "salt and pepper gr", most well srt, subang - subrnd, no stn or odor, no gas kick, barren, ns.
SS; brn, rust/brn, shaly ip, firm, most fri clusters, soft, no fluor, no stn or odor, ns.
SH; med gy, fiss, interbdd hd gy lmy ss
SH; most med gy, firm, occ silty
SH; med to dk gy, rare gy grn, fiss - platy, occ silty
SH; med gy to grn, firm, lmy ip, occ pyr

STOTLER LMST. 3378(-1183)
LM; med to dk brn, gy brn, v. foss, abnt fus, well cem, dull yel min fluor, no stn, ns.
LM; med to dk brn, dense, v. hd, blocky, tite
LM; tan to cream, off wh, fxln, foss, most well cem, blocky, no vis por, dull to lt yel fluor, no stn or odor, no gas kick, ns.
LM; med gy, v. hd, micritic, tite
SH; med gy, grn, occ pyr, firm, lmy ip.
LM; med to dk brn, hd, pyr, occ foss
SH; med gy, firm, platy
LM; off wh, tan to buff, foss - med xln, scat finely pelletal to fus. lmsst, lt yel fluor, no stn or odor, no gas kick, ns.





LM; off wh, cream, rare lt gy, minor soft chalky mtx, no vis por, no stn, ns.

LM; med gy, gy brn, scat well cem foss, spotted to even lt yel fluor, no vis por, no stn or gas kick, ns,

SH; lt gy to grn, soft, flakey

LM; off wh, f to med xln, gd interxln por, soft chalky mtx ip, lt yel fluor, no stn, no gas kick, ns.

LM; lt gy, gy brn, gran - cse xln, scat foss mat, fair interxln/interpart por, dull yel min fluor, no stn or odor, ns.

LM; tan to off wh, fxln, fair interxln por, soft chalky mtx, lt yel fluor, no stn or odor, no gas kick, ns.

SH; med gy to grn, fiss - flakey, soft ip, occ silty

SH; med gy, silty ip, firm

HOWARD 3579(-1384)

LM; med brn, dense, micritic, tite

LM; wh to off wh, fxln, abnt foss mat, soft, gd interpart and interxln por, minor soft chalky mtx, med yel min fluor, no stn or odor, no gas kick, ns.

SH; med to dk gy, firm

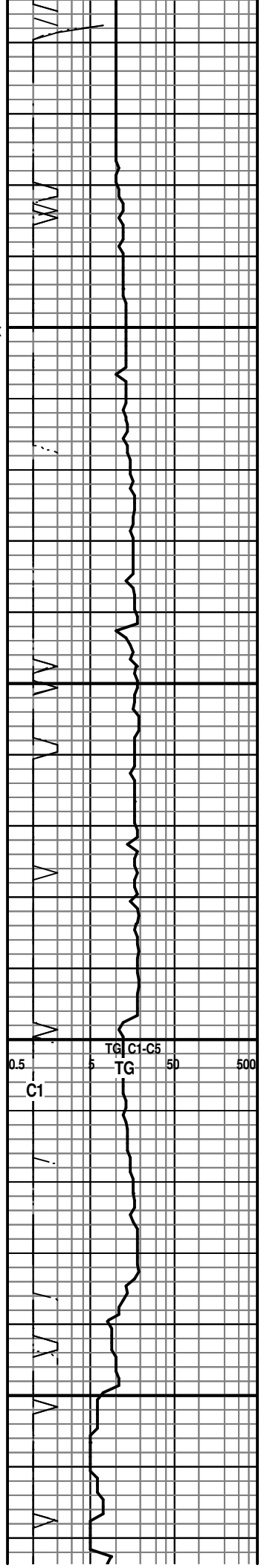
LM; tan to lt brn, buff, fxln to sucrosic, interbdd dolo/dolo. lmst, no vis por, trc wh cht, lt yel fluor, no stn or odor, ns.

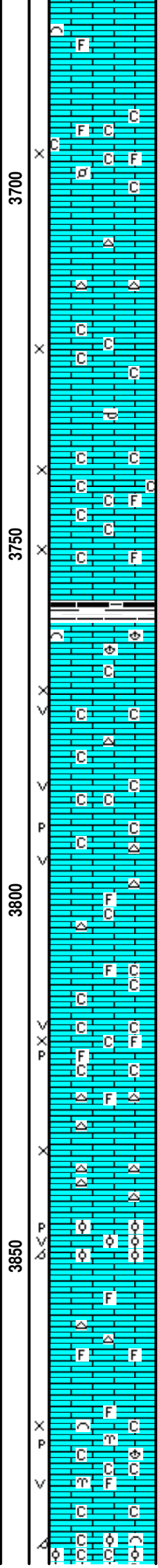
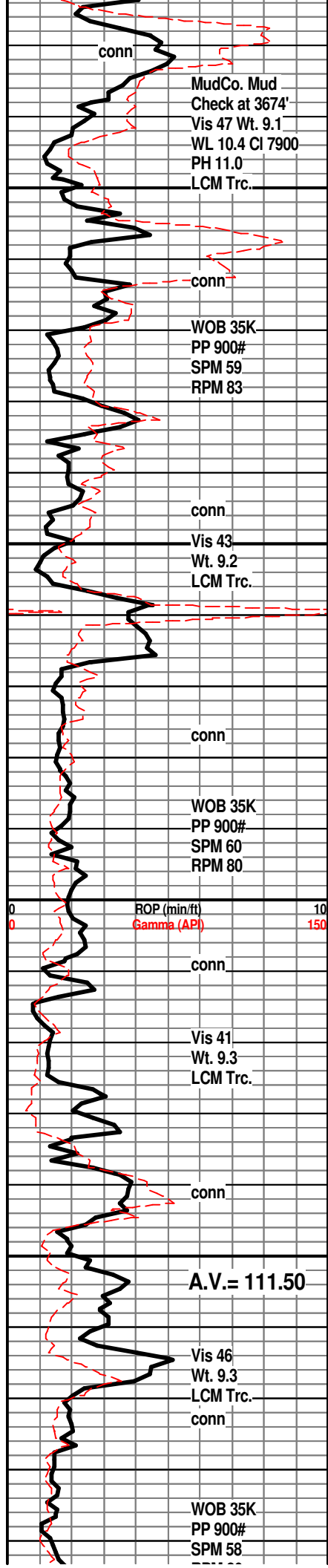
LM; tan to cream, off wh, highly foss, much foss hash, fair interpart por, minor soft chalky mtx, dull yel min fluor, no stn or odor, ns.

LM; tan to lt brn, fxln w/scat sucrosic text, scat foss mat, fair interxln /interpart por, dull yel min fluor only, no stn or odor, ns.

SH; dk gy, firm, platy

TOPEKA 3671(-1476)





LM; med to dk brn, foss ip, hd, tite

LM; off wh, wh, tan, f to med xln, fair to gd interxln por, scat foss mat, chalky mtx ip, dull yel to no fluor, no stn, ns.

LM; lt brn, tan, off wh, fxln, occ soft chalky mtx, fair interxln por, no stn, no gas kick, ns.

LM; tan to off wh, med to cse xln, gran text ip, gd interxln por, occ soft chalky mtx, dull yel min fluor only, no stn or odor, ns.

SH; dk gy, trc blk, platy

LM; med brn, gy brn, hd, foss, tite

LM; tan to off wh, buff, f to med xln, fair to poor vis interxln and small vug por, soft chalky mtx, rare gy foss cht, no fluor, no stn or odor, ns.

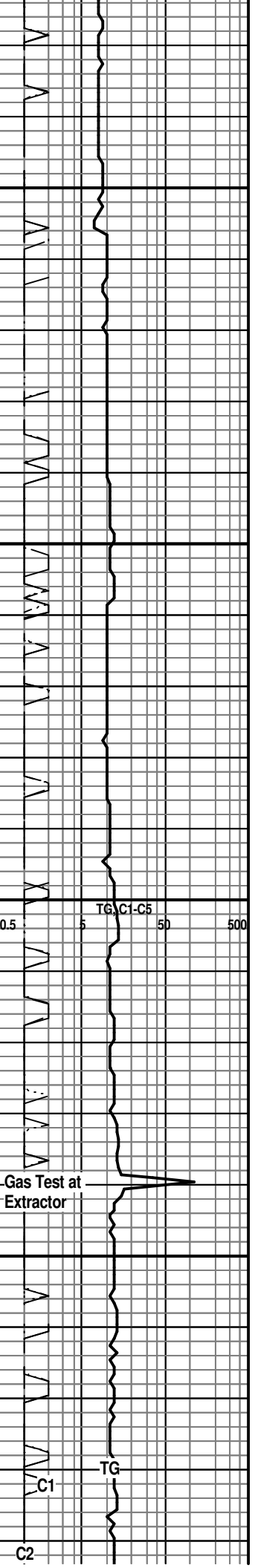
LM; tan to lt brn, med to occ cse xln, gran text ip, fair p-p and small vug por, minor chalky mtx, dull yel fluor, no stn, ns.

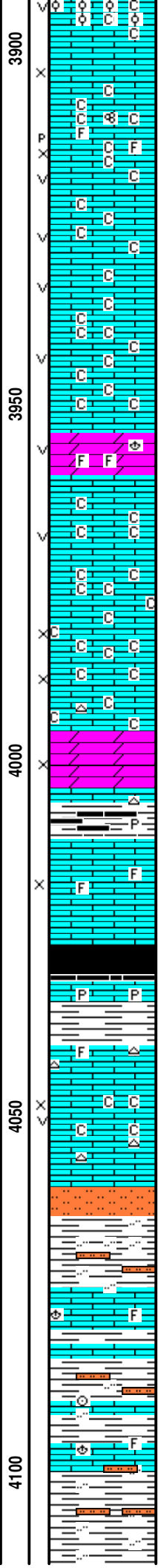
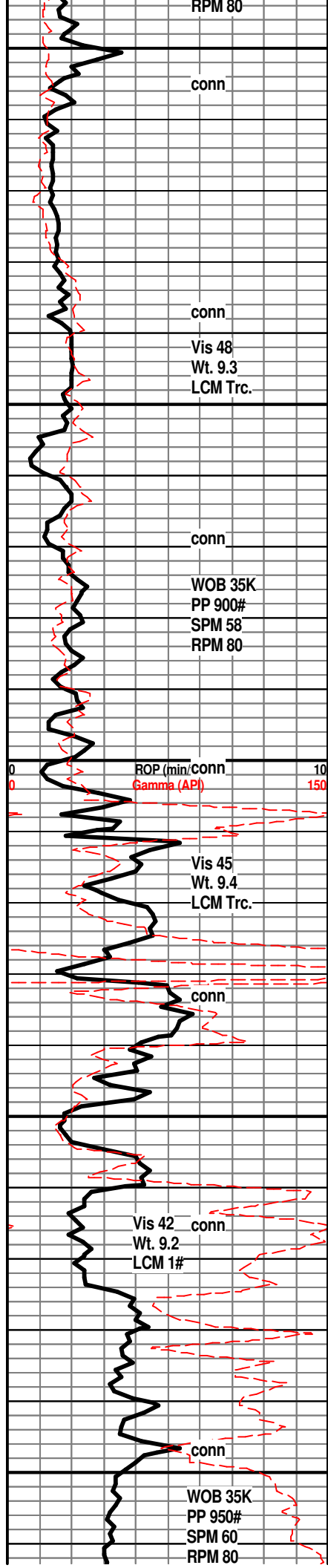
LM; off wh, cream, wh, f to med xln, rarely foss, fair to gd interxln w/p-p and small vug por, occ chalky mtx, no fluor, no stn or odor, ns.

LM; off wh, foss - oolitic, poor to fair oomoldic por, fair/gd p-p and vug por, lt yel fluor, no gas kick, ns.

LM; lt gy brn, lt brn, wh, med xln, scat foss mat, fair to gd vis interxln w/scat p-p / vug por, much soft chalky mtx, lt yel min fluor, no stn or odor, no gas kick, ns.

LM; tan to lt brn, buff, med to cse xln, foss, interbdd





oolitic lmst, fair interxln w/scat oomoldic por, chalky ip, lt yel min fluor, ns.

LM; tan to lt brn, buff, med xln, foss ip, fair interxln w/scat vug por, chalky mtx, no stn or odor, ns.

LM; tan to buff, off wh, f to med xln to gran text, fair vug por, much soft chalky mtx, dull yel fluor, no stn, ns.

DOL; tan to lt brn, sucrosic to finely rhombic, well dev. vug por, soft, lt yel min fluor, no stn or odor, foss ip, ns.

LM; tan to off wh, lt brn, med xln, scat cse opaque spar calc xtals, poor to fair interxln por, v. chalky w/much pure chalk, ns.

DOL; tan to lt brn, sucrosic to finely rhombic, lmy w/interbdd dolo. lmst, occ fair interxln por, chalky ip, lt yel min fluor, no stn vis, no odor, ns.

SH; dk gy to blk, platy, occ pyr

LM; tan to buff, lt brn, fxln, scat foss mat, poor vis interxln por, trc p-p por, dull yel min fluor, ns.

HEEBNER SHALE 4026(-1831)
SH; blk, carb ip, blocky to soft
LM; med brn, hd, micritic, occ pyr

TORONTO 4040(-1845)
LM; wh to off wh, foss, hd, occ wh/off wh cht

LM; wh, off wh, lt gy, med xln, fair vug and interxln por, chalky ip, dull yel min fluor, scat off wh cht, no stn or odor, no gas kick, ns.

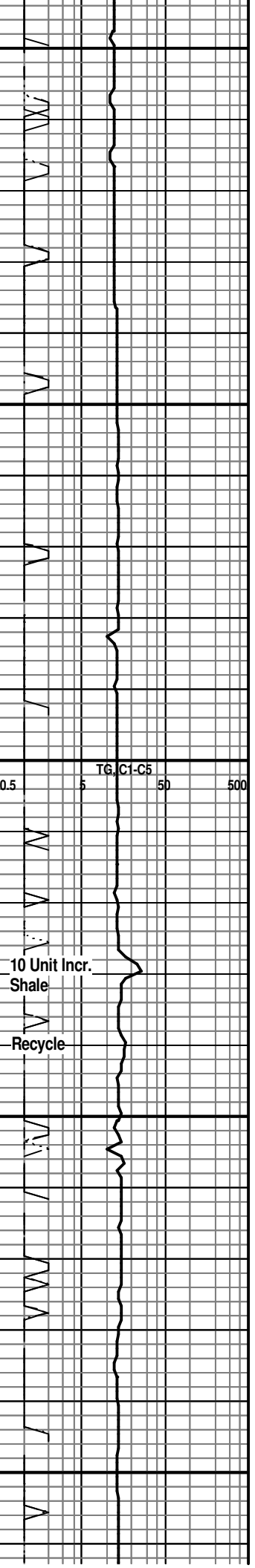
DOUGLAS SHALE 4060(-1865)
SH; lt gy, silty w/interbdd sltst, soft

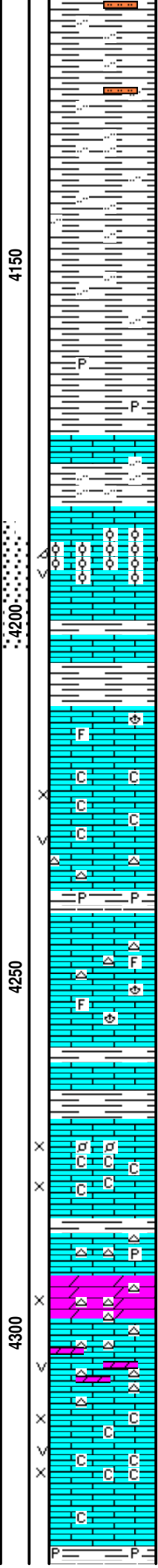
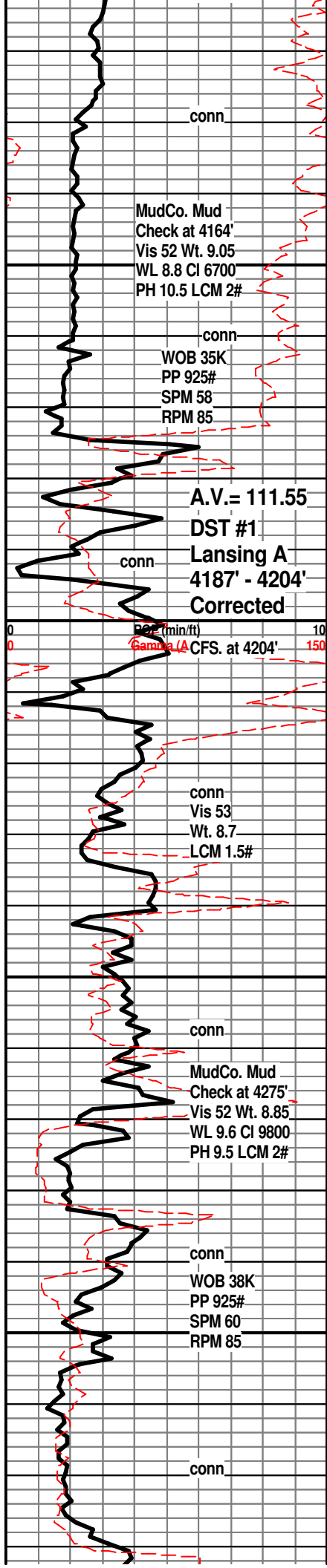
LM; med brn, foss ip, blocky, no vis por, dull to lt yel min fluor, no stn, ns.

SH; lt gy, pale gr grn, firm, occ mica sltst.

LM; med gy brn, hd, foss ip, tite

SH; lt to med gy, firm, occ silty w/ interbdd sltst.





SH; lt to med gy, rare gy grn, firm

SH; lt to med gy, firm, occ silty

Stuck pipe at 4164' - Spot 50 Bbl. Oil

SH; med gy, firm, occ pyr

BROWN LMST. 4174(-1979)

LM; med to dk brn, hd, foss ip, tite
SH; med gy to gy grn, soft, silty ip.

LANSING 'A' 4184(-1989)

LM; lt to med brn, oolitic, gd oomoldic w/vug por, med to brite yel fluor, much even med brn oil stn, gd odor, SFO, few gas bubbles, fair cut, some pcs. bleeding oil/gas

DST #1: Lansing 'A' 4187' - 4204' Corrected Depths to LOG

SH; lt gy, soft, platy

LANSING 'B' 4212(-2017)

LM; off wh, tan, foss, well cem, blocky, trc wh cht, dull yel min fluor, ns.

LM; lt gy, off wh, med xln, fair interxln w/scat vug por, occ soft chalky mtz, dull yel min fluor only, occ gy cht, no stn or odor, ns.

SH; med gy, firm, occ pyr

LM; tan to lt brn, buff, hd, most micritic, blocky, rarely foss, occ gy cht, no vis por, ns.

LM; lt brn, buff, foss ip, hd, scat cse spar calc xtals, dull yel min flour, ns.

SH; med gy, grn, platy

LM; off wh, wh, tan, f to med xln, scat finely pelletal -foss, fair interxln por, much soft chalky mtz, lt yel min fluor, no stn or odor, no gas kick, ns.

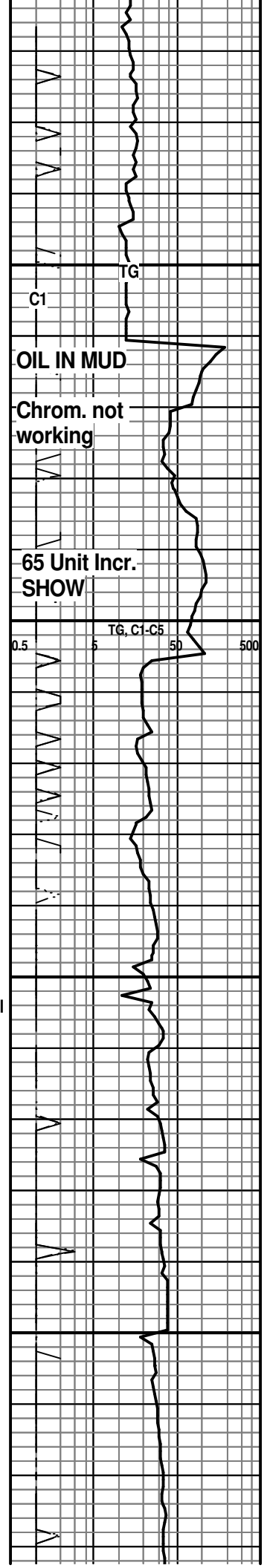
LM; tan to buff, lt brn, hd, occ cherty, pyr ip, tite

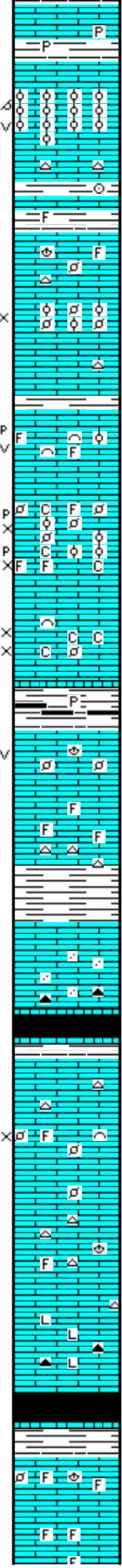
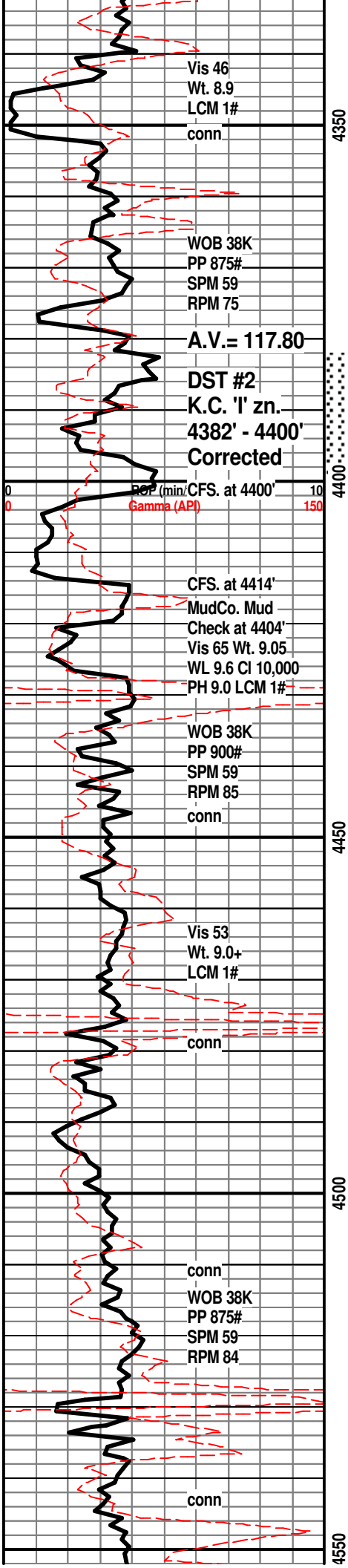
DOL; tan to lt brn, sucrosic, lmy ip, fair interxln por, scat lt gy cht, lt yel fluor, no stn or odor, ns.

LM; lt brn, buff, tan, sucrosic text, interbdd lmy dolo, fair interxln w/scat vug por, cherty ip, lt yel fluor, ns.

LM; off wh, tan, f to med xln, abnt cse opaque sparry calc, much soft chalk and chalky mtz, lt to dull yel min fluor, no stn, no gas kick, ns.

SH; med to dk av. firm. pyr in.





LM; med to dk brn, foss, hd, pyr ip.

LANS/KC. 'H' 4341(-2146)
 LM; tan to lt brn, oolitic, med to lrg molds, gd oomoldic and occ vug por, brittle, lt yel min fluor, no stn or odor, no gas kick, ns.
 LM; lt to med brn, hd, micritic, scat gy to off wh cht, tite

SH; med gy, foss ip, firm

LM; tan to buff, lt brn, most dense, scat well cem foss, hd, occ cherty, no vis por, ns.

LM; off wh, foss-finely pelletal, scat ooids, soft, fair interpart por, lt yel min fluor, no stn, ns.

K.C. 'I' 4390(-2195)
 LM; lt gy, tan, foss/gran, gd p-p w/some small vug/honeycomb por, brite yel fluor, gd odor, SSFO(light oil), few gas bubbles, fair to gd cut
DST #2: K.C. 'I' 4382' - 4400' (Corrected Depths to LOG)
 LM; tan to off wh, buff, highly foss - finely pelletal to oolitic, well dev. p-p and interpart por, minor chalky mtx, no odor, dull yel fluor, no vis stn, no cut, ns.

LM; off wh, buff, med xln, scat foss mat, fair interxln por, soft chalky mtx, dull yel min fluor, occ wh cht, no stn odor, ns.

SH; dk gy to blk, platy, firm, occ pyr

K.C. 'J' DENNIS 4435(-2240)
 LM; tan to lt brn, foss ip, most well cem, scat fair to poor vug por, dull yel fluor, no vis stn, no odor, no gas kick, ns.
 LM; tan to lt brn, scat foss, most dense - micritic, blocky, occ lt gy fresh cht, no vis por, no stn or odor, ns.

SH; med gy to gy grn, platy, smooth

LM; med brn to med gy, hd, gritty to sandy text ip, scat dk gy to smoky cht, no vis por, ns.

STARK SHALE 4475(-2280)
 SH; blk, carb ip, platy

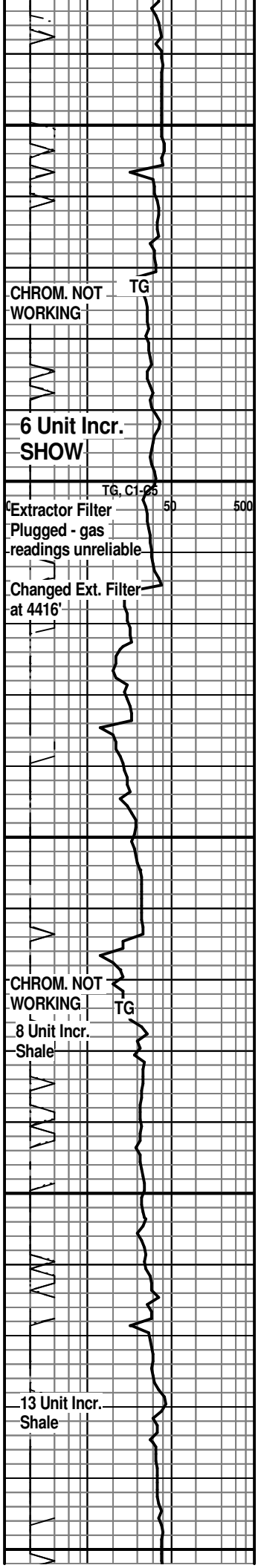
SWOPE 4481(-2286)
 LM; lt gy to lt brn, fxln, scat foss mat, poor interpart por, occ gy cht, lt yel min fluor, no stn or odor, no gas kick, ns.

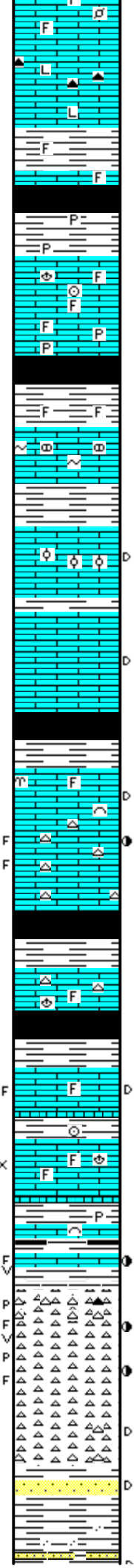
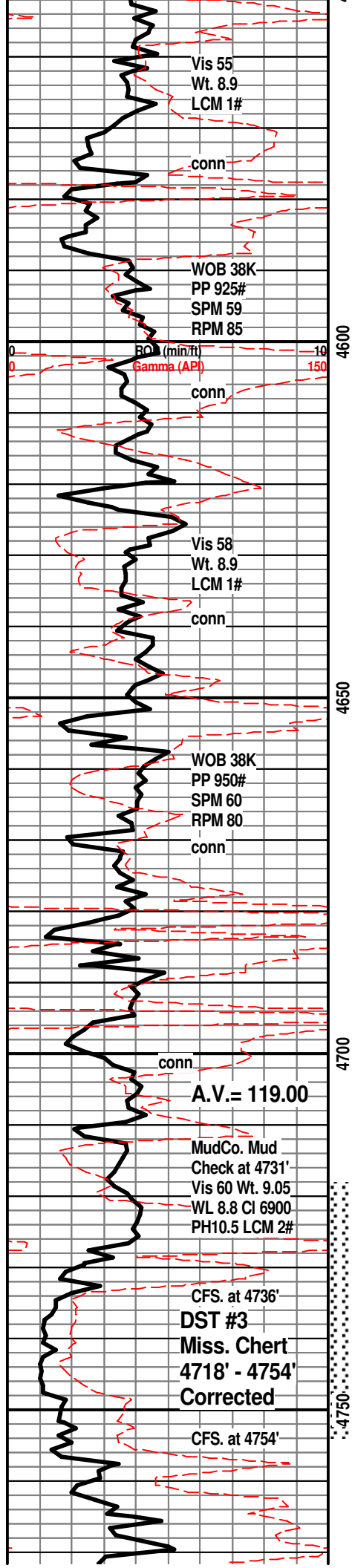
LM; tan to buff, off wh, fxln, occ foss, well cem, scat off wh to lt gy cht, no vis por, no stn or odor, ns.

LM; lt to med brn, most dense, micritic to litho, hd, occ smokey/dk gy cht, ns.

SH; blk, carb ip, , platy to blocky, trc gas

HERTHA 4537(-2342)
 LM; tan to lt brn, buff, foss ip, most well cem, hd, no vis por, no stn or odor, ns.





LM; tan to dk brn, foss ip, most dense, blocky, no vis por, dull yel min fluor, no stn or odor, ns.

LM; med to dk brn, hd, litho, scat dk gy cht, tite

BASE KANSAS CITY 4570(-2375)

SH; dk gy, blk, platy, interbdd brn foss hd lmst

SH; grn, gy grn, interbdd dk gy - blk, fiss, occ pyr

PLEASANTON 4588(-2393)

LM; med brn, med gy, dense, scat foss mat, well cem, blocky, no vis por, ns.

LM; tan to lt gy, foss ip, hd, blocky, scat pyr, tite

SH; med to dk gy, blk, grn, flakey

MARMATON 4612(-2417)

LM; med brn, pale grn tint, glau ip, some nodular, hd, no vis por, ns.

LM; tan to lt brn, fxln, scat well cem foss/oolites, few pcs w/blk dead tarry oil, occ med to brite yel fluor, no live shows

LM; tan to lt brn, buff, fxln to micritic, no vis por, no fluor, trc blk tarry dead oil, tite

SH; blk, dk gy, gy grn, platy

PAWNEE 4660(-2465)

LM; tan to lt brn, scat foss, most dense, occ blk dead tarry oil residue, no vis por, no live shows

LM; tan to lt brn, buff, foss ip, cherty, scat fracs w/faint oil stn on frac faces, spotted med brn stn, occ med to brite yel fluor, fair/faint odor

SH; blk, platy, soft to firm, pyr ip.

LM; lt to med brn, scat foss, hd, blocky, no vis por, occ cherty, tite, ns.

CHEROKEE SHALE 4694(-2499)

SH; blk to dk gy, firm

LM; tan to lt brn, buff, fxln, scat foss mat, dull yel fluor, trc fracs w/blk resid oil, faint odor(poss. slough), lt yel fluor, no gas kick

LM; tan to lt brn, foss, scat poor interpart por, most dense, blocky, dull yel min fluor, no stn or odor, ns.

LM; med brn, fxln, fracs w/trc vug por, blk - tarry oil on frac faces, dull/lt yel fluor, no odor

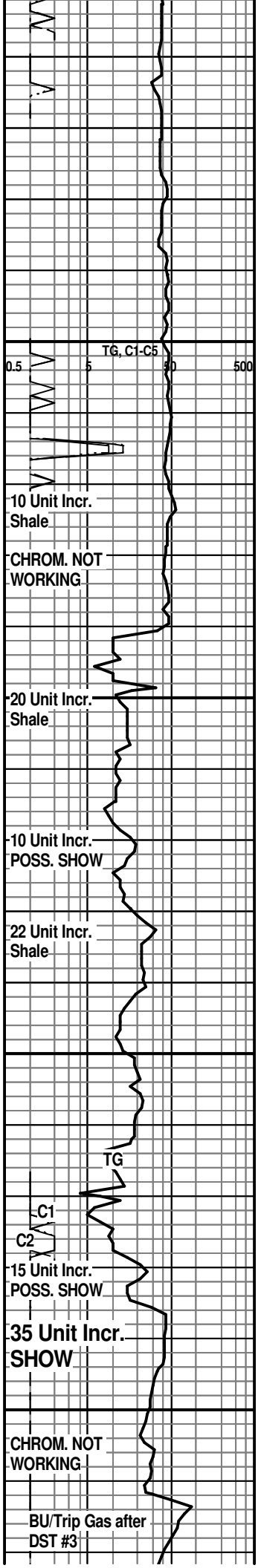
MISSISSIPPI CHERT 4733(-2538)

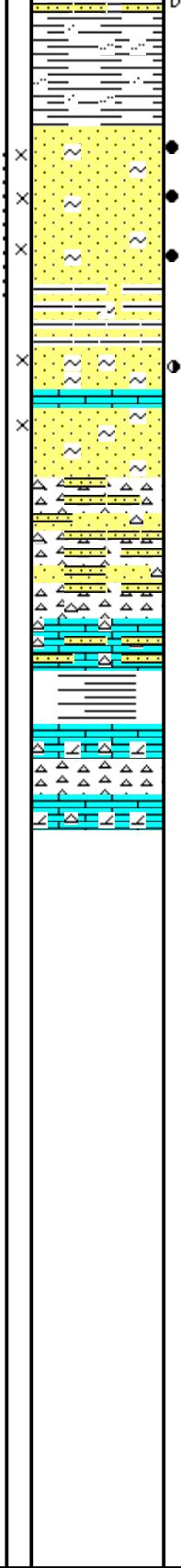
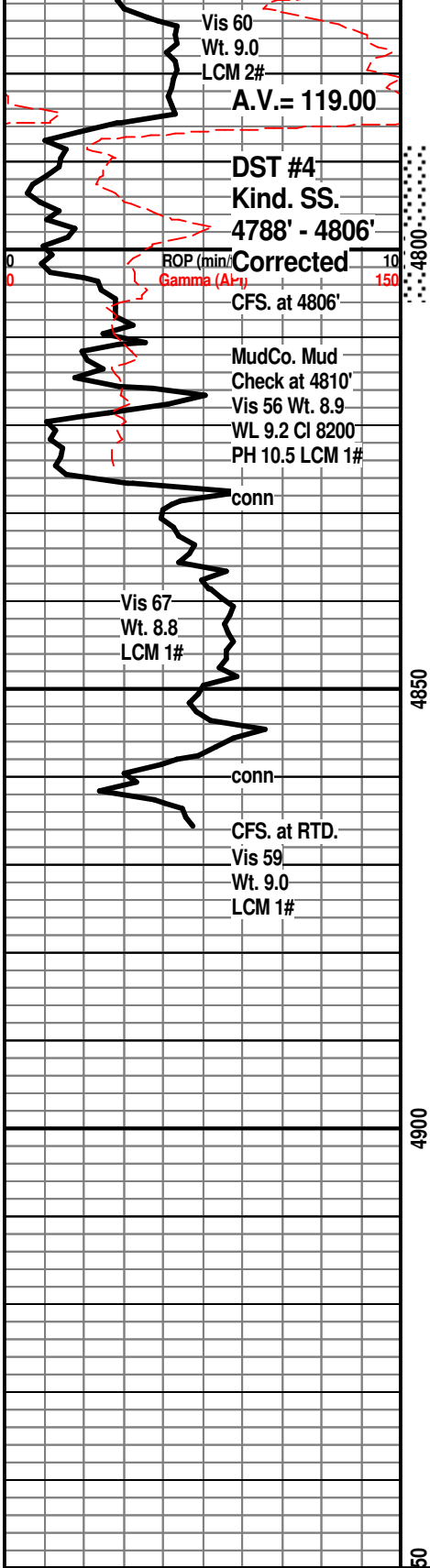
CHT; wh, off wh, fresh and trip, fracs w/fair p-p/small vug por, spotted med brn live oil stn, occ blk tar/gilsonite, Trc. FO, few gas bubbles, faint odor, spotty med/brite yel fluor, fair cut, incr. amt of fresh cht at base - few fracs

DST #3: Cher/Miss. 4718' - 4754'
Corrected Depths to LOG

KINDERHOOK SHALE 4757(-2562)

SH; med gy to grn, platy, interbdd lt gy to pale grn vf to f gr qtz ss, scat blk tar/dead oil in ss, no live shows, scat cse rnd qtz gr





SH; med gy, rare brite sea grn, waxy ip, firm, occ silty to sandy

KINDERHOOK SS 4786(-2591)
SS; lt gy, lt/med brn(oil stn), f gr qtz, well srt, fri clusters, fair/gd intergran por, even med brn live oil stn/occ blk tarry dead oil flakes, gd odor, brite yel fluor, SFO, strm cut, occ oil saturation, few gas bubbles, slow HCL reaction, occ glau

SS; lt brn, f gr qtz, well srt, most w/even med brn stn, SFO, gd odor, trc gas, fair intergran por, brite yel fluor, rare glau, trc wh unstained ss

DST #4: Kinderhook SS 4788' - 4806'
Corrected Depths to LOG

SS; wh, pale grn, f gr qtz, soft ip, gd intergran por, scat glau, fri, no stn or odor, no gas kick, barren, ns.

CHT and SS; wh, off wh, hd - sharp, siliceous dense ss and cht, tite, no stn or odor, ns.

LM; med gy, gy brn, sandy, hard, occ well cem ss, dense

SH; grn, waxy ip, soft varic rust/red, washes red

VIOLA 4854(-2659)
LM; med brn, gritty, dolomitic, interbdd varic hd fresh cht, red, yel, off wh, dove gy, no vis por, ns.

RTD. 4870' at 4:50 AM. 9/24/11

LTD. 4866'

Halliburton DIL, NEU/DEN, Microlog, MIRL

NOTE: This log shifted upward by 3' to 4' for correlation purposes with the Halliburton LOGS.

