



**TRILOBITE  
TESTING, INC.**

# DRILL STEM TEST REPORT

Strata Exploration Inc.

**Jungemann#1-28**

P.O.Box 401  
Fairfield Il.62837

**28-27s-18w Kiowa Ks.**

ATTN: Jon Christensen

Job Ticket: 43971

**DST#: 3**

Test Start: 2011.09.22 @ 16:52:58

## GENERAL INFORMATION:

Formation: **Cherokee/Miss.**

Deviated: No Whipstock: ft (KB)

Time Tool Opened: 19:21:43

Time Test Ended: 00:58:13

Test Type: Conventional Bottom Hole (Reset)

Tester: Gary Pevoteaux

Unit No: 56

**Interval: 4722.00 ft (KB) To 4758.00 ft (KB) (TVD)**

Reference Elevations: 2195.00 ft (KB)

Total Depth: 4758.00 ft (KB) (TVD)

2184.00 ft (CF)

Hole Diameter: 7.88 inches Hole Condition: Poor

KB to GR/CF: 11.00 ft

**Serial #: 8167**

**Inside**

Press @RunDepth: 27.38 psig @ 4723.00 ft (KB)

Capacity: 8000.00 psig

Start Date: 2011.09.22

End Date:

2011.09.23

Last Calib.:

2011.09.23

Start Time: 16:53:03

End Time:

00:58:12

Time On Btm:

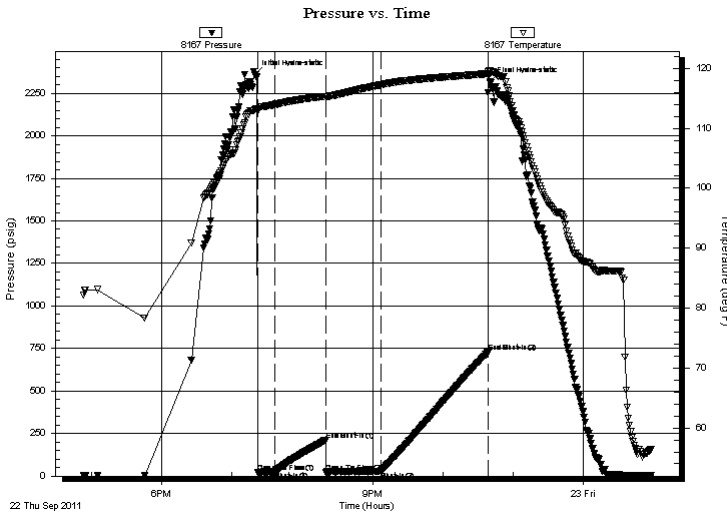
2011.09.22 @ 19:19:43

Time Off Btm:

2011.09.22 @ 22:40:28

**TEST COMMENT:** IF:Weak to fair blow . Increase to 10".  
IS:No blow .  
FF:Fair to strong blow . B.O.B. in 23 mins.  
FS:No blow .

## PRESSURE SUMMARY



Time (Min.)	Pressure (psig)	Temp (deg F)	Annotation
0	2359.70	113.07	Initial Hydro-static
2	21.19	112.75	Open To Flow (1)
17	25.34	113.96	Shut-In(1)
60	212.56	115.35	End Shut-In(1)
61	22.23	115.32	Open To Flow (2)
108	27.38	117.27	Shut-In(2)
199	726.47	119.11	End Shut-In(2)
201	2319.48	119.53	Final Hydro-static

## Recovery

Length (ft)	Description	Volume (bbl)
35.00	Mud w a few o specs	0.17
0.00	340 ft.of GIP	0.00

\* Recovery from multiple tests

## Gas Rates

Choke (inches)	Pressure (psig)	Gas Rate (Mcf/d)



**TRILOBITE  
TESTING, INC.**

# DRILL STEM TEST REPORT

**FLUID SUMMARY**

Strata Exploration Inc.

**Jungemann#1-28**

P.O.Box 401  
Fairfield Il.62837

**28-27s-18w Kiowa Ks.**

Job Ticket: 43971

**DST#: 3**

ATTN: Jon Christensen

Test Start: 2011.09.22 @ 16:52:58

## Mud and Cushion Information

Mud Type: Gel Chem

Cushion Type:

Oil API:

deg API

Mud Weight: 9.00 lb/gal

Cushion Length:

ft

Water Salinity:

6900 ppm

Viscosity: 53.00 sec/qt

Cushion Volume:

bbf

Water Loss: 8.79 in<sup>3</sup>

Gas Cushion Type:

Resistivity: 0.00 ohm.m

Gas Cushion Pressure:

psig

Salinity: 6900.00 ppm

Filter Cake: 0.20 inches

## Recovery Information

Recovery Table

Length ft	Description	Volume bbf
35.00	Mud w a few o specs	0.172
0.00	340 ft.of GIP	0.000

Total Length: 35.00 ft      Total Volume: 0.172 bbf

Num Fluid Samples: 0

Num Gas Bombs: 0

Serial #: none

Laboratory Name:

Laboratory Location:

Recovery Comments:

