



**TRILOBITE  
TESTING, INC.**

# DRILL STEM TEST REPORT

Woolsey Operating Co.LLC

**33-33s-10w Barber Ks**

125 N.Market ,Ste.1000  
Wichita Ks.67202

**Circle B-1**

Job Ticket: 44014

**DST#: 2**

ATTN: Scott Alberg

Test Start: 2011.10.26 @ 04:39:03

## GENERAL INFORMATION:

Formation: **Viola**

Deviated: No Whipstock: ft (KB)

Time Tool Opened: 07:15:33

Time Test Ended: 13:39:33

Test Type: Conventional Bottom Hole (Reset)

Tester: Gary Pevoteaux

Unit No: 56

**Interval: 4916.00 ft (KB) To 4934.00 ft (KB) (TVD)**

Reference Elevations: 1430.00 ft (KB)

Total Depth: 4934.00 ft (KB) (TVD)

1421.00 ft (CF)

Hole Diameter: 7.88 inches Hole Condition: Poor

KB to GR/CF: 9.00 ft

**Serial #: 8167**

**Inside**

Press @RunDepth: 28.12 psig @ 4917.00 ft (KB)

Capacity: 8000.00 psig

Start Date: 2011.10.26

End Date: 2011.10.26

Last Calib.: 2011.10.26

Start Time: 04:39:08

End Time: 13:39:33

Time On Btm: 2011.10.26 @ 07:14:33

Time Off Btm: 2011.10.26 @ 11:22:18

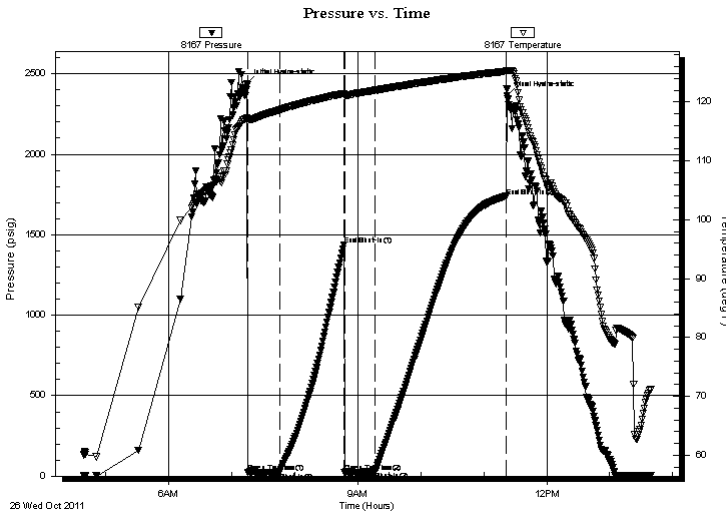
**TEST COMMENT:** IF:Weak to fair blow . Increase to 5 1/2".

IS:No blow .

FF:Strong blow . B.O.B. in 5 secs.

FS:No blow .

## PRESSURE SUMMARY



Time (Min.)	Pressure (psig)	Temp (deg F)	Annotation
0	2439.90	117.28	Initial Hydro-static
1	23.01	116.71	Open To Flow (1)
31	23.72	118.67	Shut-In(1)
93	1436.89	121.43	End Shut-In(1)
93	21.33	121.14	Open To Flow (2)
123	28.12	121.98	Shut-In(2)
247	1738.93	125.19	End Shut-In(2)
248	2365.55	125.31	Final Hydro-static

## Recovery

Length (ft)	Description	Volume (bbl)
35.00	GOCM 10%g 10%o 80%m	0.17
0.00	1015 ft.of GIP	0.00

\* Recovery from multiple tests

## Gas Rates

Choke (inches)	Pressure (psig)	Gas Rate (Mcf/d)



**TRILOBITE  
TESTING, INC.**

# DRILL STEM TEST REPORT

**FLUID SUMMARY**

Woolsey Operating Co.LLC

**33-33s-10w Barber Ks**

125 N.Market ,Ste.1000  
Wichita Ks.67202

**Circle B-1**

Job Ticket: 44014

**DST#: 2**

ATTN: Scott Alberg

Test Start: 2011.10.26 @ 04:39:03

## Mud and Cushion Information

Mud Type: Gel Chem

Cushion Type:

Oil API:

deg API

Mud Weight: 9.00 lb/gal

Cushion Length:

ft

Water Salinity:

10300 ppm

Viscosity: 56.00 sec/qt

Cushion Volume:

bbbl

Water Loss: 9.59 in<sup>3</sup>

Gas Cushion Type:

Resistivity: 0.00 ohm.m

Gas Cushion Pressure:

psig

Salinity: 10300.00 ppm

Filter Cake: 0.20 inches

## Recovery Information

Recovery Table

Length ft	Description	Volume bbbl
35.00	GOCM 10%g 10%o 80%m	0.172
0.00	1015 ft.of GIP	0.000

Total Length: 35.00 ft

Total Volume: 0.172 bbl

Num Fluid Samples: 0

Num Gas Bombs: 0

Serial #: none

Laboratory Name:

Laboratory Location:

Recovery Comments:

