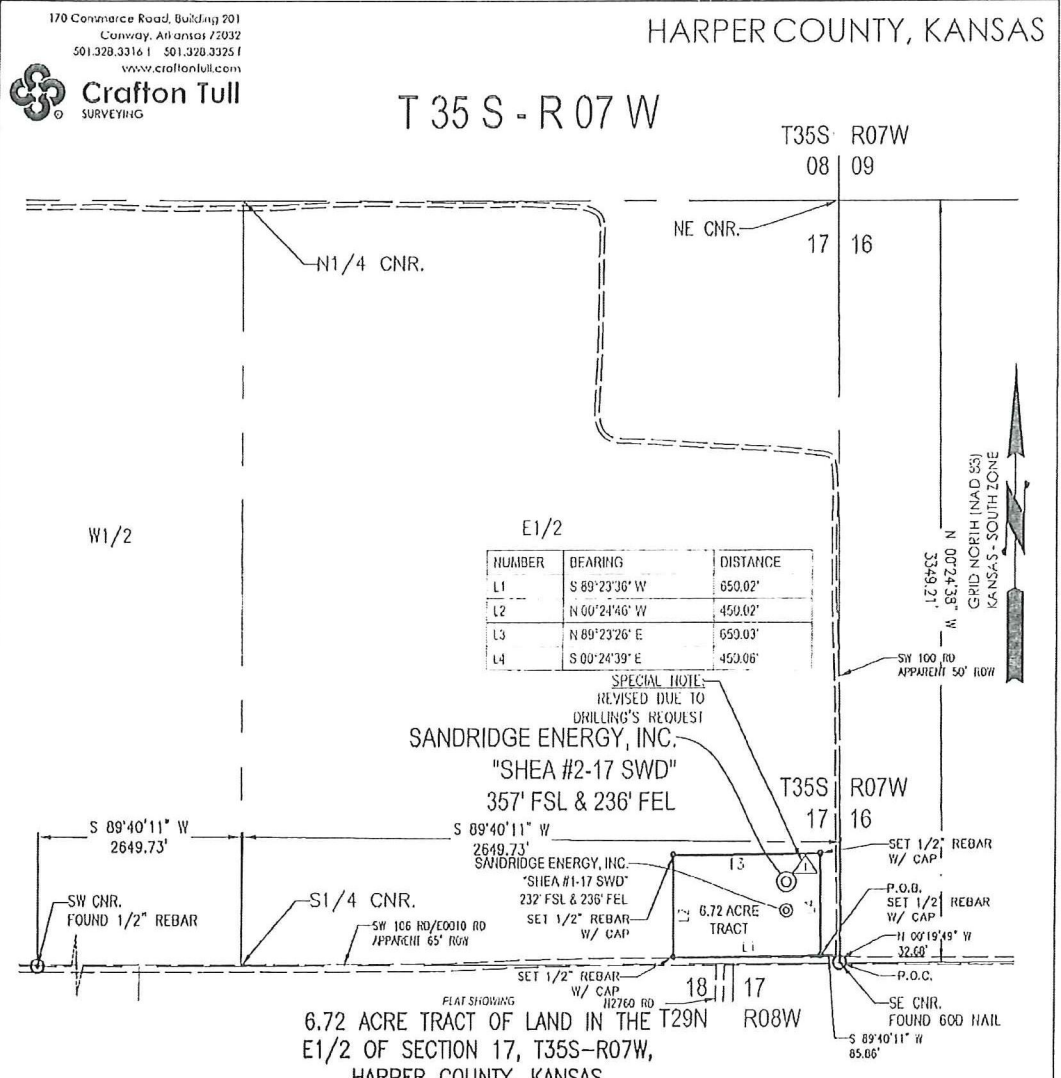


AMENDED S.L.



NUMBER	BEARING	DISTANCE
L1	S 89°23'36" W	650.02'
L2	N 00°24'46" W	450.02'
L3	N 89°23'26" E	650.03'
L4	S 00°24'39" E	450.06'

METES AND BOUNDS DESCRIPTION (6.72 ACRE TRACT)

PART OF THE E1/2 OF SECTION 17, TOWNSHIP 35 SOUTH, RANGE 07 WEST, HARPER COUNTY, KANSAS. MORE PARTICULARLY DESCRIBED AS FOLLOWS:

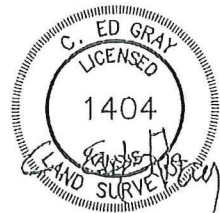
- COMMENCING AT THE SE CORNER OF SAID SECTION 17;
- THENCE N 00°19'49" W ALONG THE EAST LINE OF SAID SECTION 17, A DISTANCE OF 32.68 FEET;
- THENCE S 89°40'11" W, A DISTANCE OF 85.86 FEET TO THE POINT OF BEGINNING;
- THENCE S 89°23'36" W, A DISTANCE OF 650.02 FEET;
- THENCE N 00°24'46" W, A DISTANCE OF 450.02 FEET;
- THENCE N 89°23'26" E, A DISTANCE OF 650.03 FEET;
- THENCE S 00°24'39" E, A DISTANCE OF 450.06 FEET TO THE POINT OF BEGINNING.

SAID TRACT CONTAINING 6.72 ACRES MORE OR LESS OF LAND AS SURVEYED.

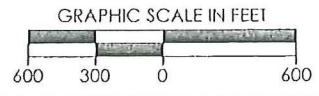
THE COORDINATES ARE BASED ON NAD83 STATE PLANE COORDINATE SYSTEM AS PROCESSED BY OPUS USING THESE STATIONS: AF9518 LMHO LAMONT CORS ARP, AF9525 VCIO VICI CORS ARP, & AF9562 HVLK HAVILAND CORS ARP

SURVEYOR'S CERTIFICATE:
I, C. ED GRAY, KANSAS LICENSED PROFESSIONAL LAND SURVEYOR, NO. 1404, DO HEREBY CERTIFY THAT THIS PLAT REPRESENTS THE RESULTS OF A SURVEY MADE ON THE GROUND UNDER MY SUPERVISION ON THE DATE OF 01-30-2012.

GENERAL NOTES:
THE TIES AND FOOTAGES SHOWN ON THIS PLAT ARE FROM LINES OF OCCUPATION FROM A SURVEY MADE ON THE GROUND AND / OR BEARING AND DISTANCES FROM THE GENERAL LAND OFFICE PLAT OF THE AREA SHOWN AND MAY NOT BE THE ACTUAL PROPERTY CORNERS. THIS PLAT DOES NOT REPRESENT A TRUE BOUNDARY SURVEY.



1/30/2012



REVISION		SandRidge	
▲	REVISED S.H.C. (01-30-2012) DUE TO DRILLING'S REQUEST	"SHEA #2-17 SWD" PART OF THE E1/2 OF SECTION 17, T-35-S, R-07-W PROPOSED DRILL SITE HARPER COUNTY, KANSAS	
		SCALE: 1" = 600'	
		PLOT DATE: 01-30-2012	DRAWN BY: S. ANDER
			SHEET NO.: 1 OF 1