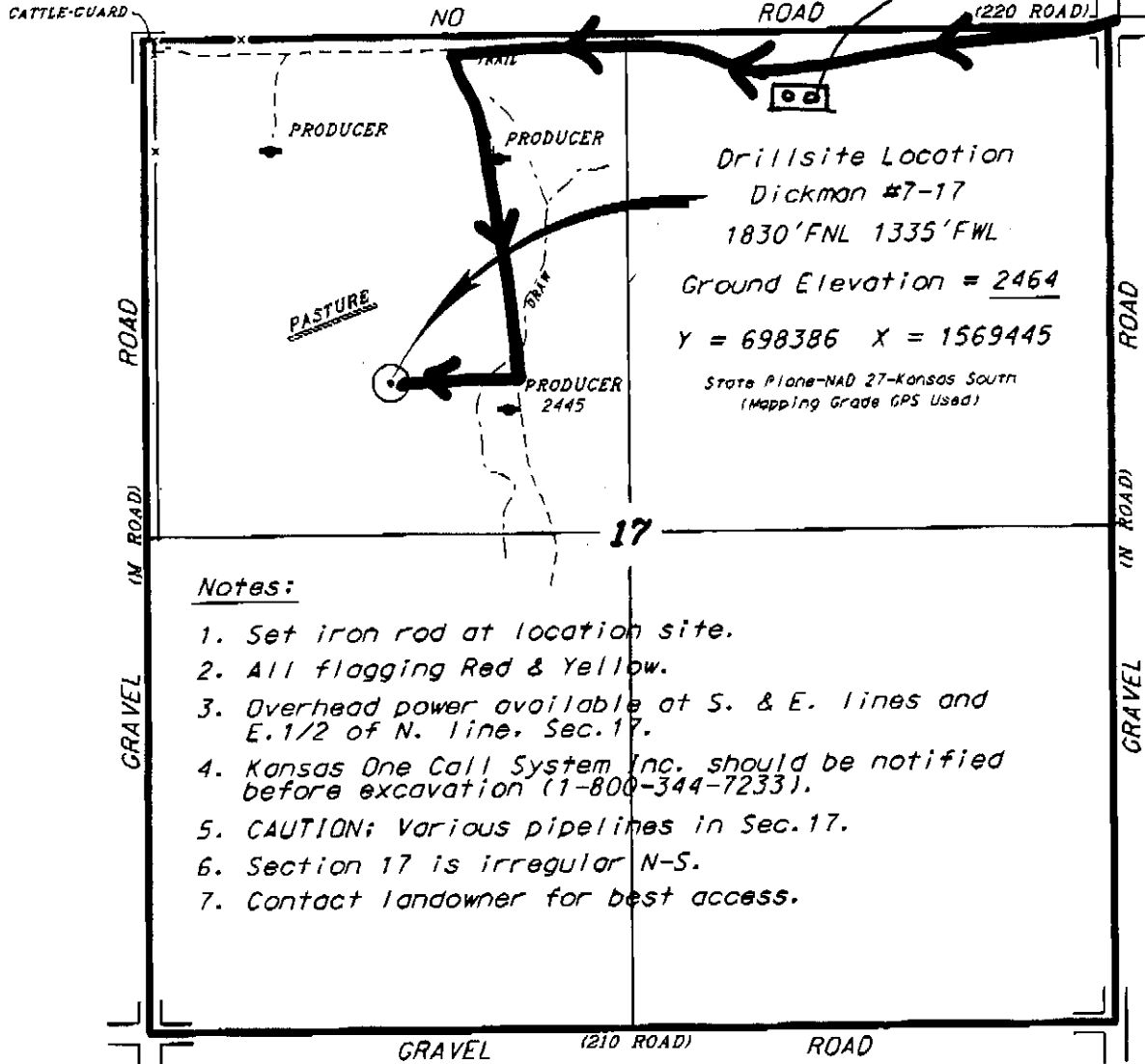
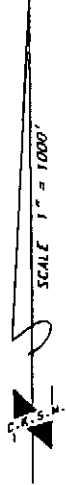


GRAND MESA OPERATING COMPANY
DICKMAN LEASE
NW.1/4, SECTION 17, T17S, R24W
NESS COUNTY, KANSAS

TANK BATTERY

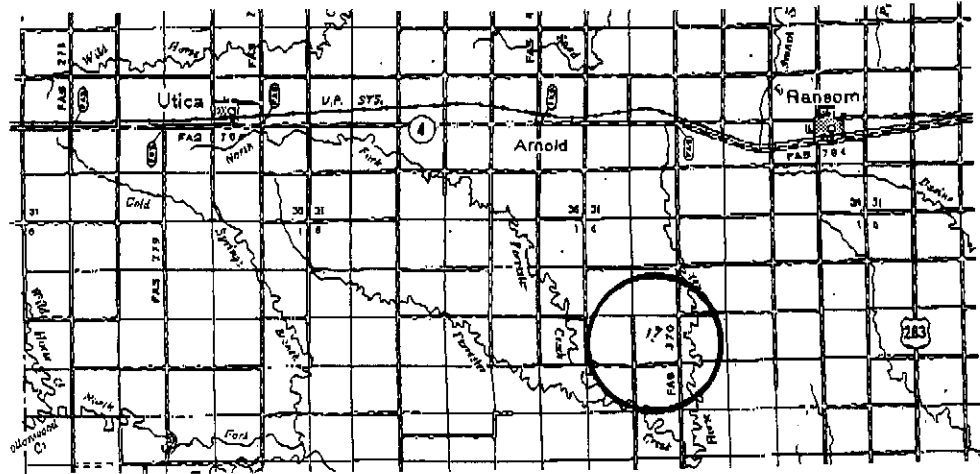


*Ingress and egress to location as shown on this plot is per usage only and may not be legally opened for public use. Contact landowner, tenant and county road department for access.



Notes:

1. Set iron rod at location site.
2. All flagging Red & Yellow.
3. Overhead power available at S. & E. lines and E.1/2 of N. line, Sec.17.
4. Kansas One Call System Inc. should be notified before excavation (1-800-344-7233).
5. CAUTION; Various pipelines in Sec.17.
6. Section 17 is irregular N-S.
7. Contact landowner for best access.



• Contouring data is based upon the best maps and photographs available to us and upon a regular section of land containing 640 acres.

• Approximate section lines were determined using the normal standard of care of oilfield surveyors practicing in the state of Kansas. The section corners, which establish the precise section lines, were not necessarily located, and the exact location of the drillsite location in the section is not guaranteed. Therefore, the operator securing this service and accepting this plot and all other parties relying thereon agree to hold Central Kansas Oilfield Services, Inc., its officers and employees harmless from all losses, costs and expenses and said services released from any liability from incidental or consequential damages.

Date February 14, 2012