

MURFIN DRILLING COMPANY, INC.
MEMBER OF THE MURFIN GROUP

GEOLOGIST'S REPORT

OPERATOR: MURFIN DRILLING COMPANY, INC.
LEASE: ORTH 'E' # 9
LOCATION: 1350 FNL & 1050 FWL

SEC. 3 TWP. 14S RGE. 19W
COUNTY: ELLIS STATE: KANSAS

FIELD: STADELMAN

CONTRACTOR: Murfin Drilling Company RIG NO. 8
COMMENCED: 1 Nov. 2011 COMPLETED: 11 Nov. 2011
MUD OIL PLACED: 2929 MUD TYPE: Chemical
DRILLING TIME KEPT FROM: 3090 TO: 3835
SAMPLES SAVED FROM: 3090 TO: 3835
SAMPLES EXAMINED FROM: 3090 TO: 3835

GEOLOGICAL SUPERVISION FROM: 2977 TO: 3835
GEOLOGIST ON WELL: Paul Gurselmann

FORMATION NAME: TOP DATUM SAMPLE DATE
 Stone Corral 1489 +715 1475 +709
 Base/Anhydrite 1514 +670 1511 +673

LOG DATUM TOP DATE
 Topoka 3188 -1004 3185 -1001
 Heebner Shale 3431 -1248 3426 -1242
 Toronto 3452 -1288 3450 -1286
 Lansing 3474 -1290 3472 -1288
 Base/Kansas City 3728 -1544 3724 -1540
 Arbutuckle 3818 -1634 3816 -1632
 Total Depth 3840 -1736 3835 -1751

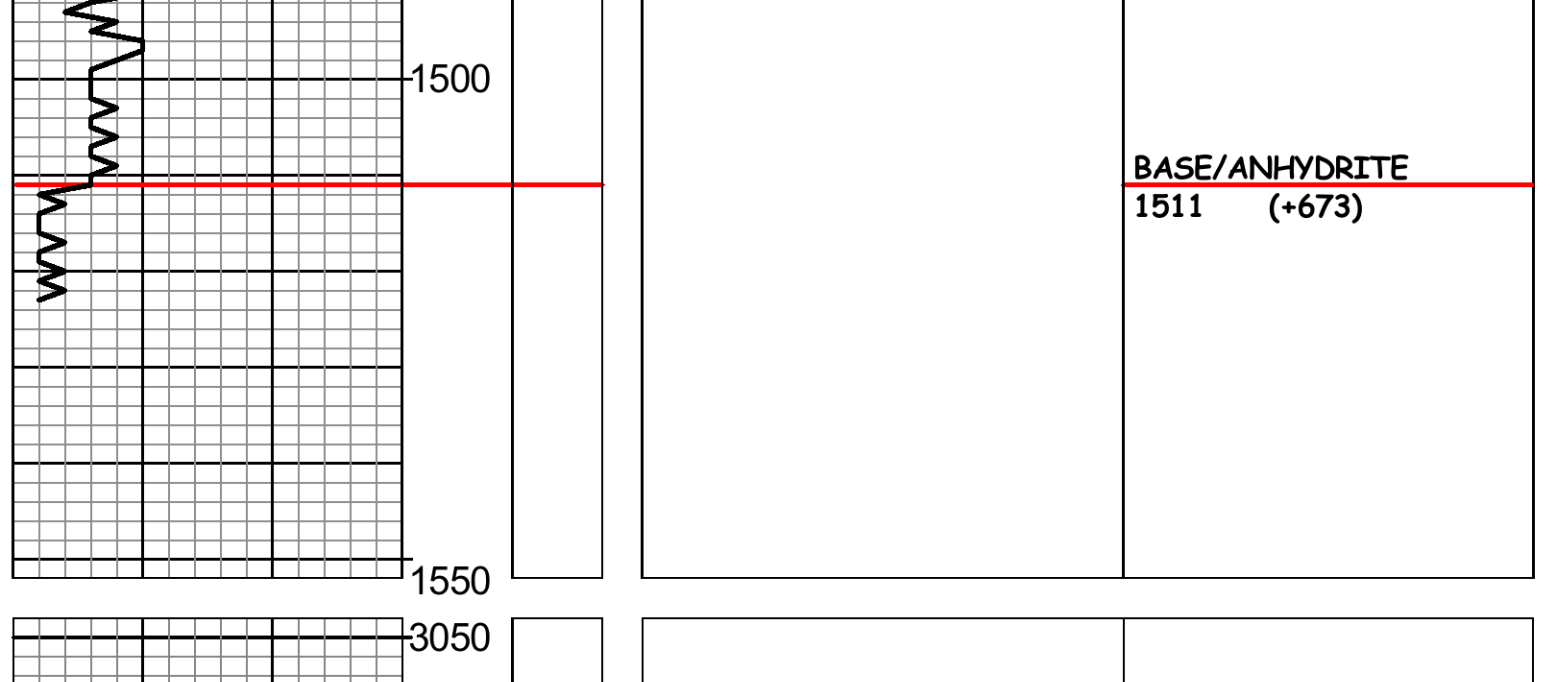
ELEVATIONS
 KB 2184 Ft.
 CL 2179 Ft.

CASING RECORD
 Candidate Name
 Surface 8"8" @ 220'
 Production 5 1/2" @ 2890'

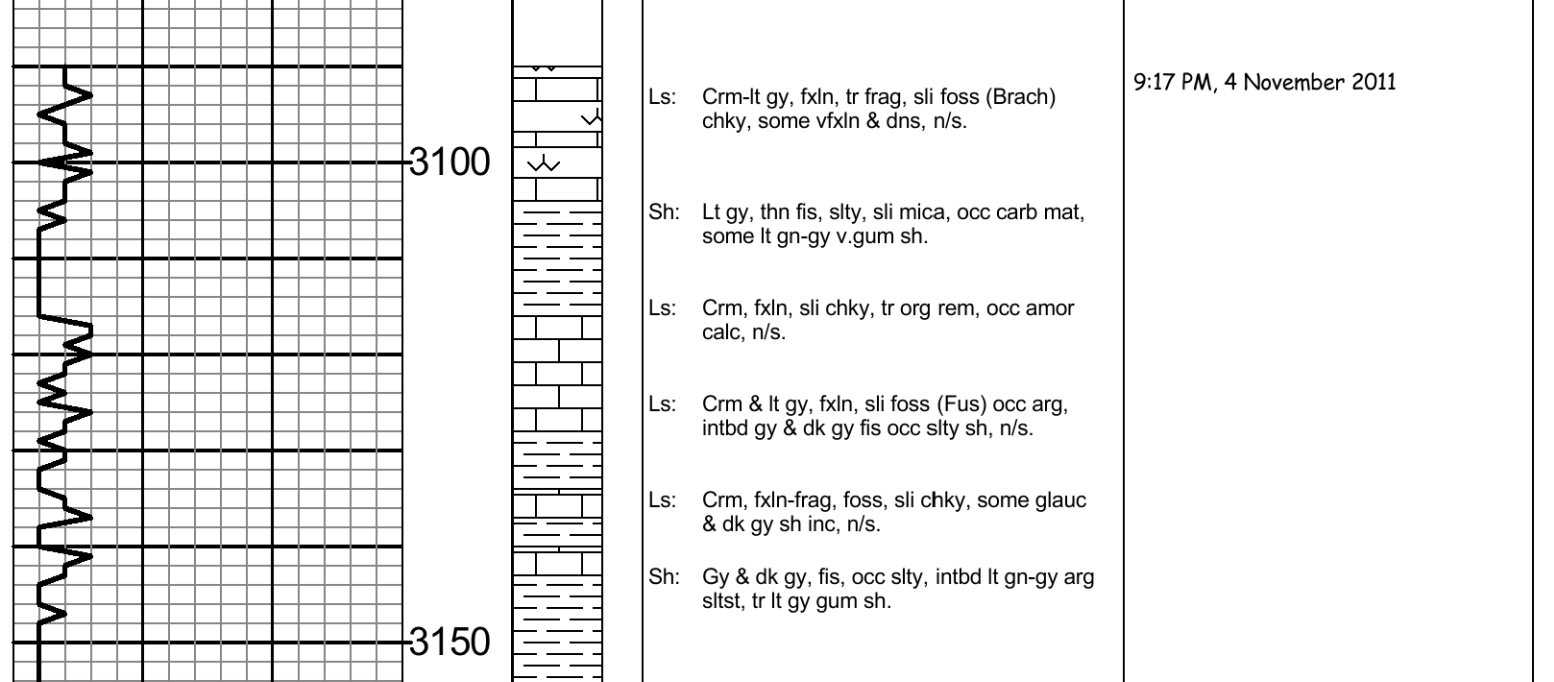
ELECTRICAL SURVEYS:
 Log-Tech, Inc.
 Comp. Neutron Density
 Dual Induction
 Micro-resistivity
 Comp. Sonic

DRILL TIME (MIN/FT)	DEPTH	LITHOLOGY	SAMPLE DESCRIPTIONS	REMARKS
---------------------	-------	-----------	---------------------	---------

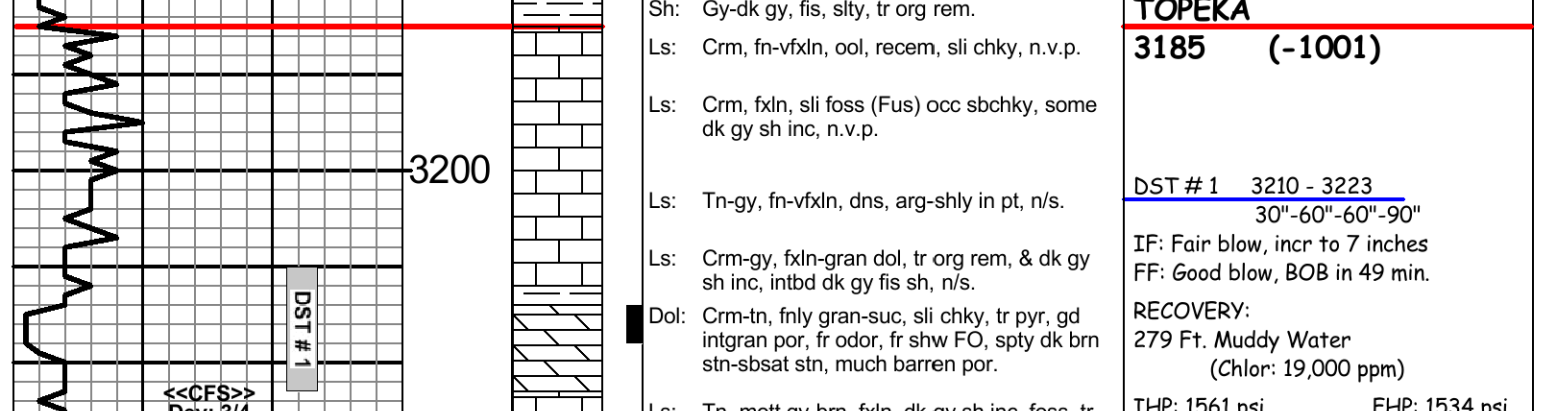
REMARKS
 API 15-051-26208-00-00
 Drilling Fluids: Morgan Mud, Inc. (David Lines, engineer)
 Drill Stem Testing: Tribolite Testing, Inc. (Cody Bloedorn, tester)
 Gas Trailing: No Gas Trailer
 Reserve Pit Chlorides: 19,500 ppm.



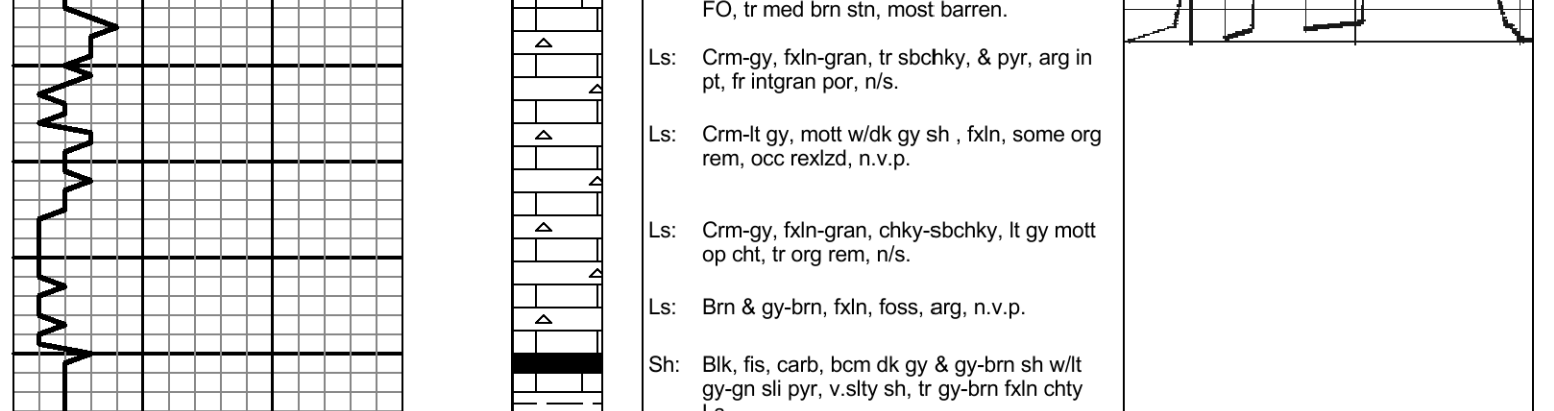
STONE CORRAL 1475 (+709)
BASE/ANHYDRITE 1511 (+673)



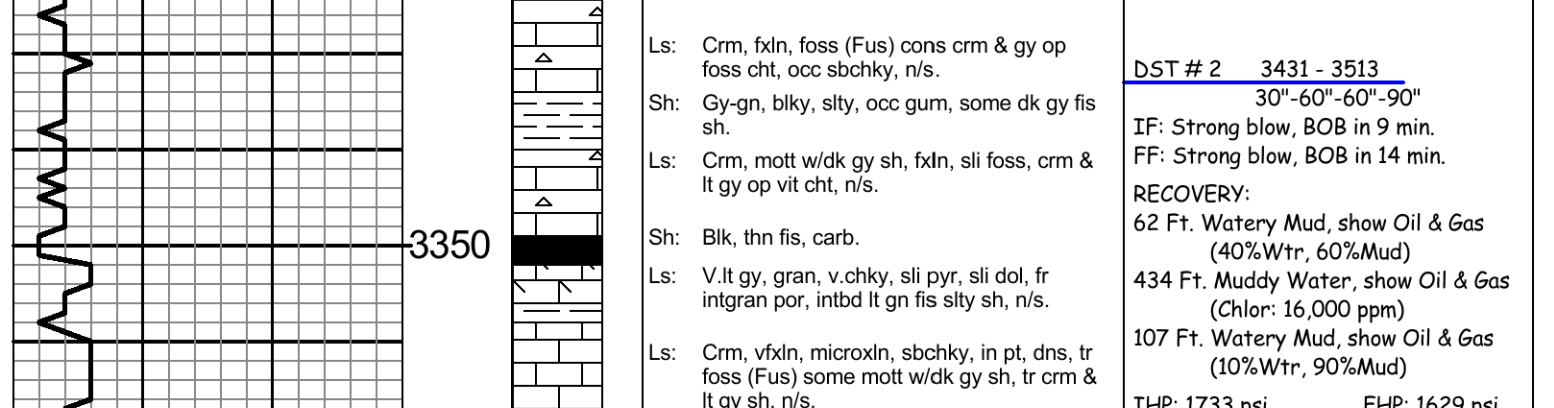
TOPEKA 3185 (-1001)



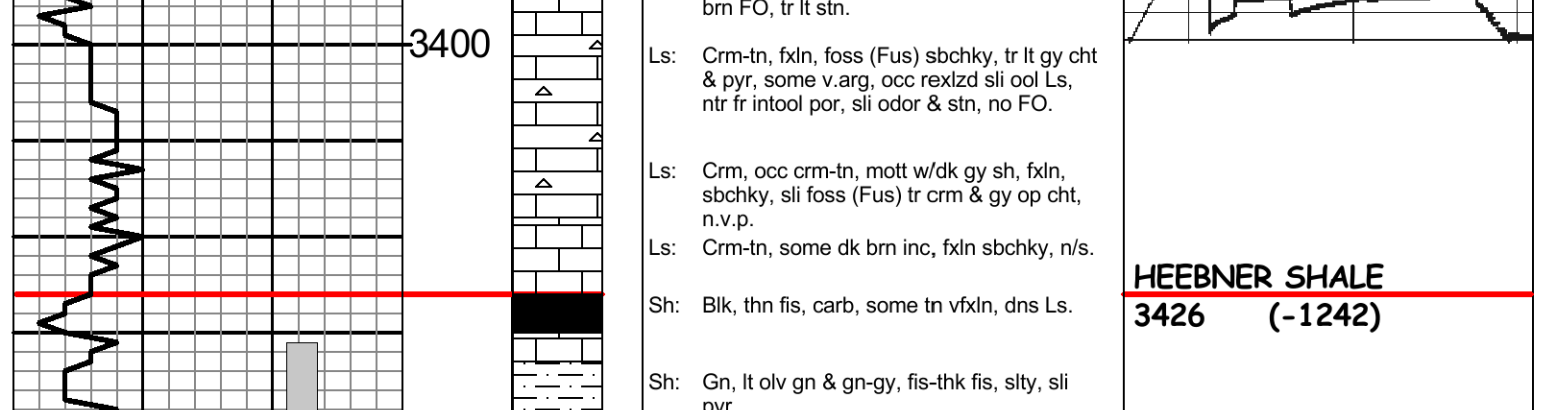
HEEBNER SHALE 3426 (-1242)



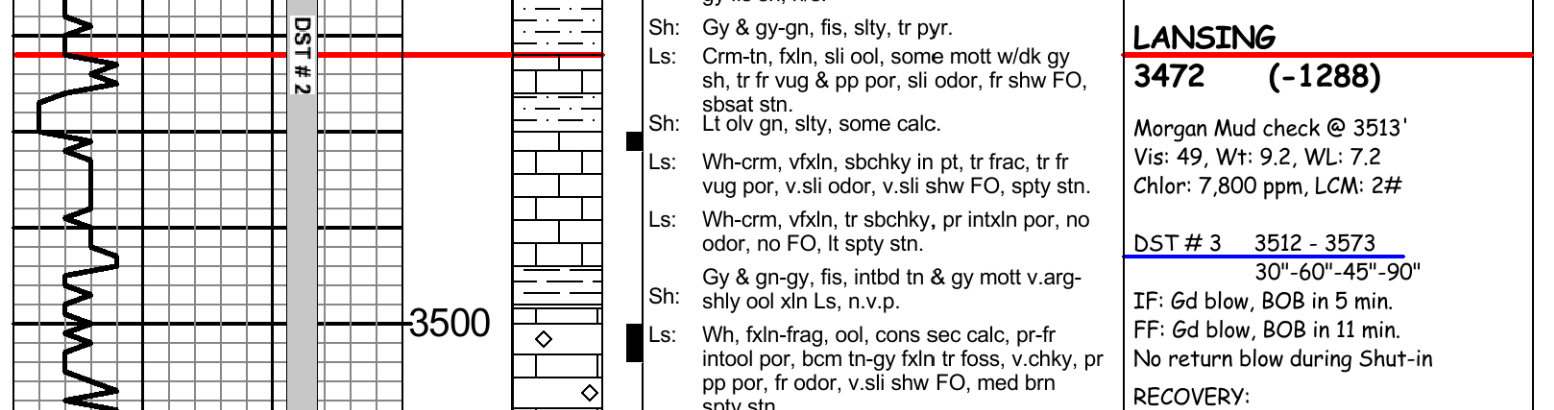
TORONTO 3450 (-1266)



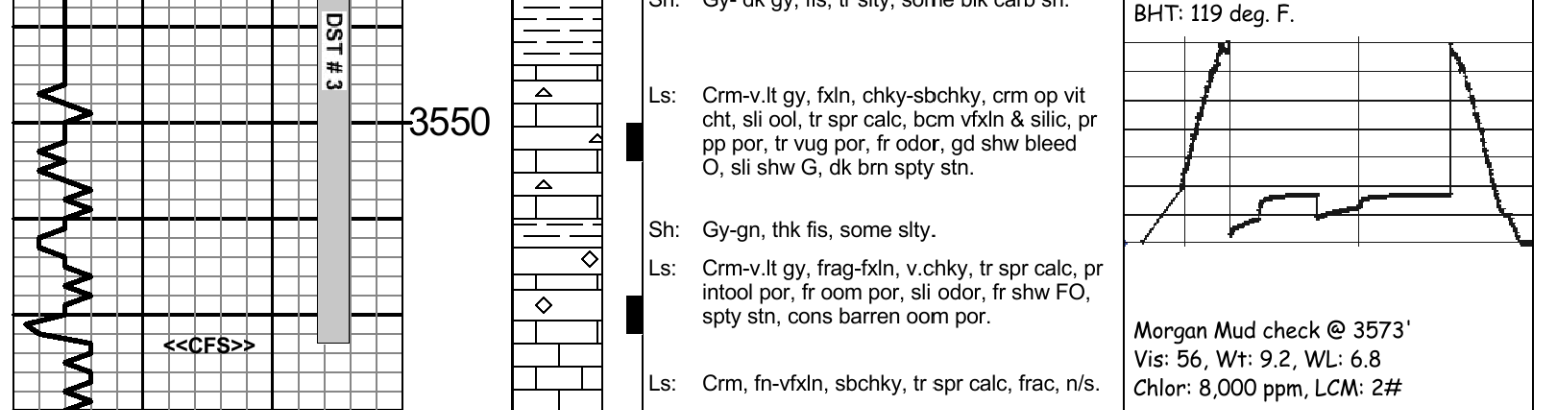
LANSSING 3472 (-1288)



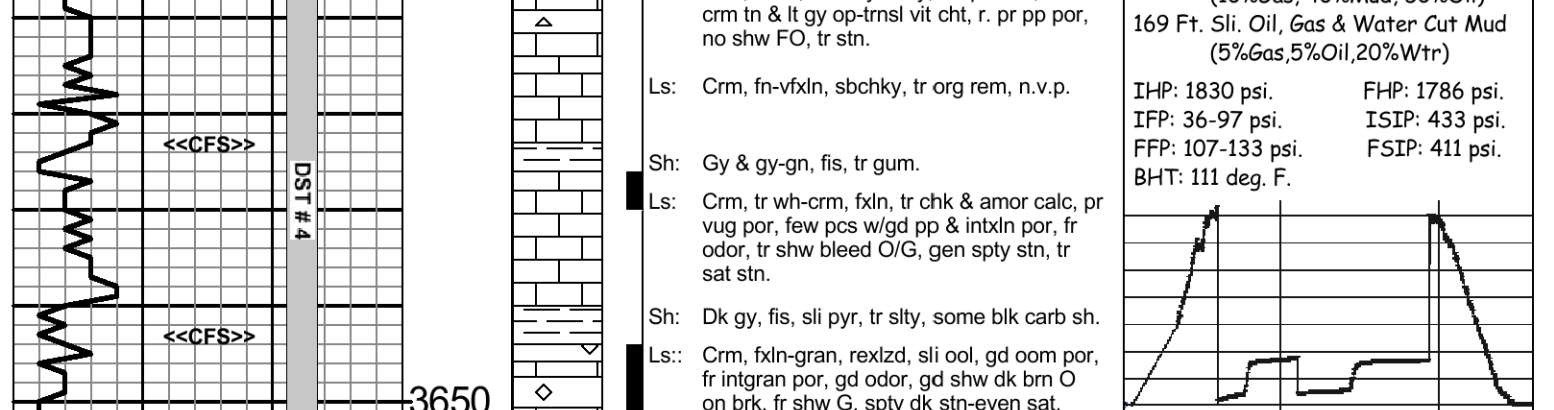
BASE/KANSAS CITY 3724 (-1540)



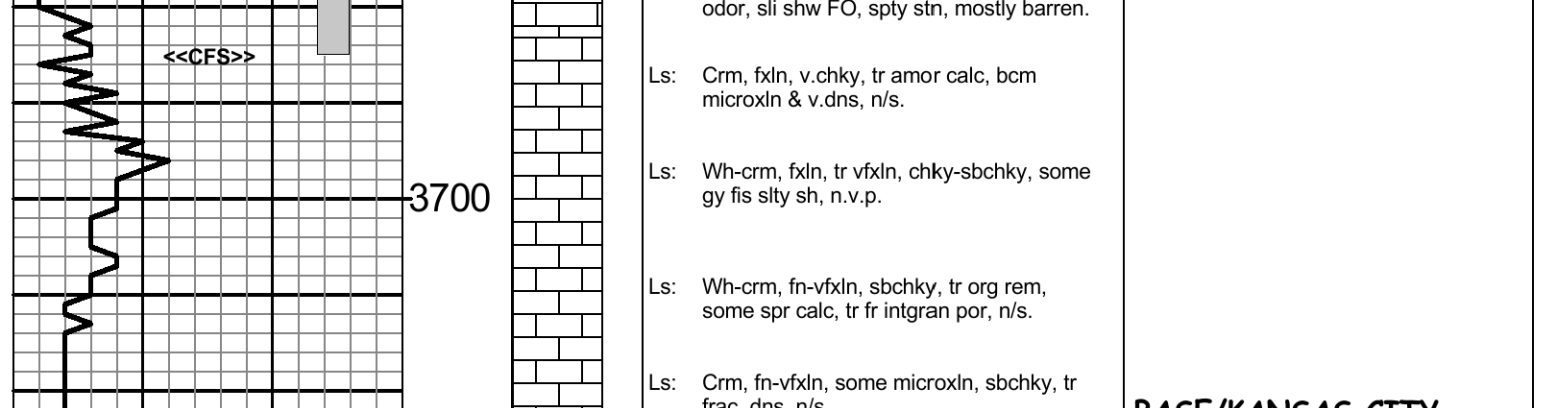
ARBUCKLE 3816 (-1632)



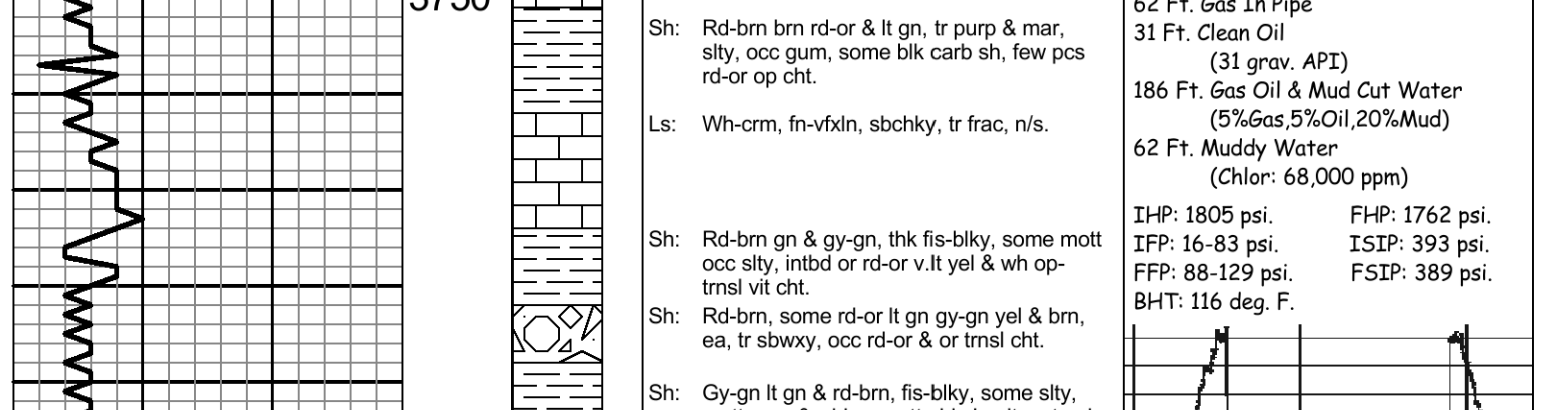
TOTAL DEPTH 3935 (-1751)



BASE/KANSAS CITY 3724 (-1540)



ARBUCKLE 3816 (-1632)



TOTAL DEPTH 3935 (-1751)

Operator: MURFIN DRILLING COMPANY, INC.
Lease: ORTH 'E' # 9
Location: 1350 FNL & 1050 FWL SEC. 3 TWP. 14S RGE. 19W
County: ELLIS State: KANSAS