



DRILL STEM TEST REPORT

Prepared For: **Shelby Resources LLC.**

445 Union Blvd.Suite 208
Lakewood,Colorado 80228

ATTN: Keith R

9/17S/14W Barton

Beren Trust#1-9

Start Date: 2011.07.03 @ 04:09:00

End Date: 2011.07.03 @ 11:17:30

Job Ticket #: 16616 DST #: 2

Superior Testers Enterprises LLC
PO Box 138 Great Bend KS 67530
1-800-792-6902

Printed: 2011.07.03 @ 23:32:00

Shelby Resources LLC. Beren Trust#1-9 9/17S/14W Barton DST # 2 Arbuckle 2011.07.03



DRILL STEM TEST REPORT

Shelby Resources LLC.
 445 Union Blvd. Suite 208
 Lakewood, Colorado 80228
 ATTN: Keith R

Beren Trust#1-9
9/17S/14W Barton
 Job Ticket: 16616 **DST#: 2**
 Test Start: 2011.07.03 @ 04:09:00

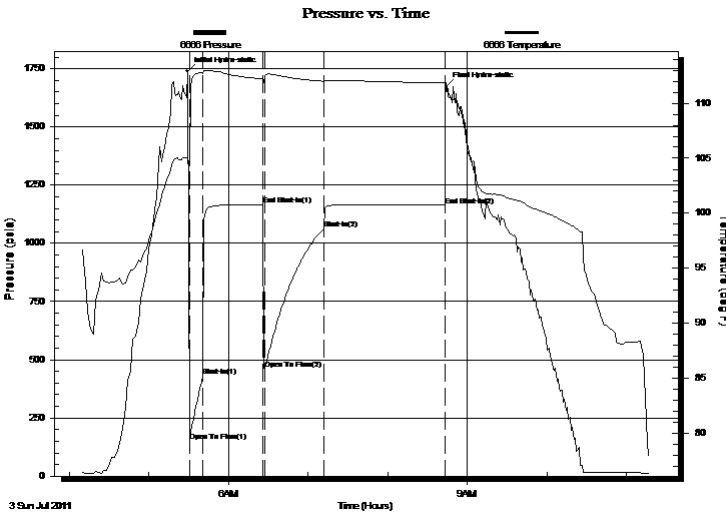
GENERAL INFORMATION:

Formation: **Arbuckle**
 Deviated: No Whipstock: ft (KB)
 Test Type: Conventional Bottom Hole (Initial)
 Time Tool Opened: 05:30:30 Tester: Dylan E Ellis
 Time Test Ended: 11:17:30 Unit No: 3345/Great Bend/34
 Interval: **3476.00 ft (KB) To 3484.00 ft (KB) (TVD)** Reference Elevations: 1961.00 ft (KB)
 Total Depth: 3484.00 ft (KB) (TVD) 1952.00 ft (CF)
 Hole Diameter: 7.88 inches Hole Condition: Fair KB to GR/CF: 9.00 ft

Serial #: 6666 Outside
 Press @ Run Depth: 1061.39 psia @ 3481.00 ft (KB) Capacity: 5000.00 psia
 Start Date: 2011.07.03 End Date: 2011.07.03 Last Calib.: 2011.07.03
 Start Time: 04:09:00 End Time: 11:17:30 Time On Btm: 2011.07.03 @ 05:29:00
 Time Off Btm: 2011.07.03 @ 08:44:00

TEST COMMENT: 1ST Opening 10 Minutes good blow /blow blew to bottom of bucket in 1 minute
 1ST Shut-In 45 Minutes yes surface blow back
 2ND Opening 45 Minutes good blow /blow blew to bottom of bucket in 1 minute
 2ND Shut-In 90 Minutes yes surface blow back

PRESSURE SUMMARY



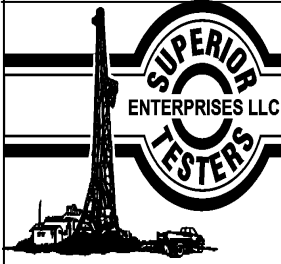
Time (Min.)	Pressure (psia)	Temp (deg F)	Annotation
0	1739.55	105.02	Initial Hydro-static
2	149.65	104.32	Open To Flow (1)
12	429.48	112.73	Shut-In(1)
57	1166.59	112.22	End Shut-In(1)
58	459.35	112.38	Open To Flow (2)
103	1061.39	112.00	Shut-In(2)
194	1162.33	111.87	End Shut-In(2)
195	1673.50	111.88	Final Hydro-static

Recovery

Gas Rates

Length (ft)	Description	Volume (bbl)
2300.00	Salt Water 100%	30.32
0.00	Chlorides were 43,000.0	0.00
0.00	Resistivity was .14 @ 69 degrees	0.00

	Choke (inches)	Pressure (psia)	Gas Rate (Mcf/d)



DRILL STEM TEST REPORT

Shelby Resources LLC.
 445 Union Blvd.Suite 208
 Lakewood, Colorado 80228
 ATTN: Keith R

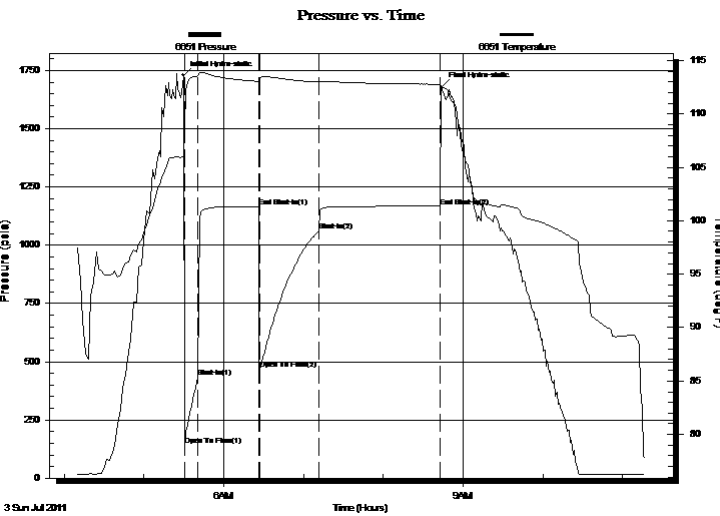
Beren Trust#1-9
9/17S/14W Barton
 Job Ticket: 16616 **DST#: 2**
 Test Start: 2011.07.03 @ 04:09:00

GENERAL INFORMATION:

Formation: **Arbuckle**
 Deviated: No Whipstock: ft (KB)
 Test Type: Conventional Bottom Hole (Initial)
 Time Tool Opened: 05:30:30 Tester: Dylan E Ellis
 Time Test Ended: 11:17:30 Unit No: 3345/Great Bend/34
 Interval: **3476.00 ft (KB) To 3484.00 ft (KB) (TVD)** Reference Elevations: 1961.00 ft (KB)
 Total Depth: 3484.00 ft (KB) (TVD) 1952.00 ft (CF)
 Hole Diameter: 7.88 inches Hole Condition: Fair KB to GR/CF: 9.00 ft

Serial #: 6651 Inside
 Press @ Run Depth: 1166.70 psia @ 3480.00 ft (KB) Capacity: 5000.00 psia
 Start Date: 2011.07.03 End Date: 2011.07.03 Last Calib.: 2011.07.03
 Start Time: 04:09:00 End Time: 11:17:00 Time On Btm: 2011.07.03 @ 05:29:30
 Time Off Btm: 2011.07.03 @ 08:44:00

TEST COMMENT: 1ST Opening 10 Minutes good blow /blow blew to bottom of bucket in 1 minute
 1ST Shut-In 45 Minutes yes surface blow back
 2ND Opening 45 Minutes good blow /blow blew to bottom of bucket in 1 minute
 2ND Shut-In 90 Minutes yes surface blow back



PRESSURE SUMMARY

Time (Min.)	Pressure (psia)	Temp (deg F)	Annotation
0	1728.77	106.04	Initial Hydro-static
1	142.52	108.50	Open To Flow (1)
11	435.52	113.54	Shut-In(1)
57	1166.32	113.02	End Shut-In(1)
58	466.78	113.36	Open To Flow (2)
102	1061.36	112.97	Shut-In(2)
193	1166.70	112.77	End Shut-In(2)
195	1679.11	112.41	Final Hydro-static

Recovery

Length (ft)	Description	Volume (bbl)
2300.00	Salt Water 100%	30.32
0.00	Chlorides were 43,000.0	0.00
0.00	Resistivity was .14 @ 69 degrees	0.00

Gas Rates

	Choke (inches)	Pressure (psia)	Gas Rate (Mcf/d)



DRILL STEM TEST REPORT

TOOL DIAGRAM

Shelby Resources LLC.
 445 Union Blvd.Suite 208
 Lakewood, Colorado 80228
 ATTN: Keith R

Beren Trust#1-9
9/17S/14W Barton
 Job Ticket: 16616 **DST#: 2**
 Test Start: 2011.07.03 @ 04:09:00

Tool Information

Drill Pipe:	Length: 3248.00 ft	Diameter: 3.80 inches	Volume: 45.56 bbl	Tool Weight:	2000.00 lb
Heavy Wt. Pipe:	Length: 0.00 ft	Diameter: 0.00 inches	Volume: 0.00 bbl	Weight set on Packer:	20000.00 lb
Drill Collar:	Length: 213.21 ft	Diameter: 2.25 inches	Volume: 1.05 bbl	Weight to Pull Loose:	27000.00 lb
			<u>Total Volume: 46.61 bbl</u>	Tool Chased	0.00 ft
Drill Pipe Above KB:	13.21 ft			String Weight: Initial	64000.00 lb
Depth to Top Packer:	3476.00 ft			Final	74000.00 lb
Depth to Bottom Packer:	ft				
Interval between Packers:	8.00 ft				
Tool Length:	36.00 ft				
Number of Packers:	1	Diameter: 6.75 inches			

Tool Comments:

Tool Description	Length (ft)	Serial No.	Position	Depth (ft)	Accum. Lengths
Shut-In Tool	5.00			3453.00	
Hydraulic Tool	5.00			3458.00	
Jars	6.00			3464.00	
Safety Joint	2.00			3466.00	
Packer	5.00			3471.00	28.00 Bottom Of Top Packer
Packer	5.00			3476.00	
Perforations	3.00			3479.00	
Recorder	1.00	6651	Inside	3480.00	
Recorder	1.00	6666	Outside	3481.00	
Bull Plug	3.00			3484.00	8.00 Bottom Packers & Anchor
Total Tool Length:	36.00				



DRILL STEM TEST REPORT

FLUID SUMMARY

Shelby Resources LLC.
445 Union Blvd.Suite 208
Lakewood, Colorado 80228
ATTN: Keith R

Beren Trust#1-9
9/17S/14W Barton
Job Ticket: 16616 **DST#: 2**
Test Start: 2011.07.03 @ 04:09:00

Mud and Cushion Information

Mud Type: Gel Chem	Cushion Type:	Oil API:	deg API
Mud Weight: 9.00 lb/gal	Cushion Length: ft	Water Salinity:	ppm
Viscosity: 59.00 sec/qt	Cushion Volume: bbl		
Water Loss: 10.20 in ³	Gas Cushion Type:		
Resistivity: ohm.m	Gas Cushion Pressure: psia		
Salinity: 7500.00 ppm			
Filter Cake: 1.00 inches			

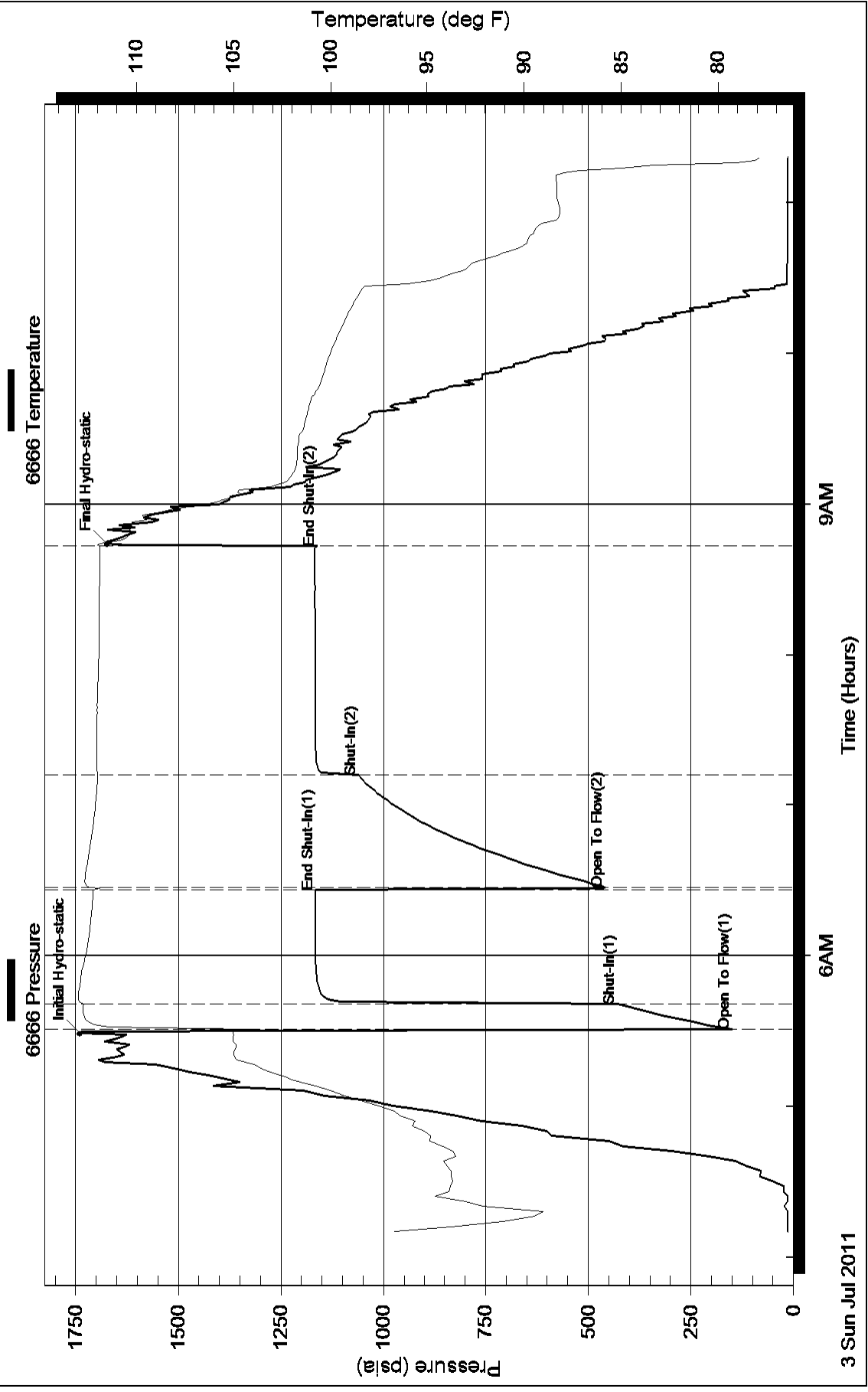
Recovery Information

Recovery Table

Length ft	Description	Volume bbl
2300.00	Salt Water 100%	30.321
0.00	Chlorides were 43,000.0	0.000
0.00	Resistivity was .14 @ 69 degrees	0.000

Total Length: 2300.00 ft Total Volume: 30.321 bbl
Num Fluid Samples: 0 Num Gas Bombs: 0 Serial #:
Laboratory Name: Laboratory Location:
Recovery Comments:

Pressure vs. Time



3 Sun Jul 2011

6AM

Time (Hours)

9AM

Pressure vs. Time

