

**OPERATOR**

Company: Shelby Resources, LLC  
 Address: 445 Union Blvd.  
 Suite 208  
 Lakewood, CO 80228  
 Contact Geologist: Janine Sturdavant  
 Contact Phone Nbr: 720-274-4682  
 Well Name: Berens Trust #1-9  
 Location: Sec. 9 - T17S - R14W  
 Pool:   
 State: Kansas  
 API: 15-009-25551-0000  
 Field: Capitol View  
 Country: USA

## Scale 1:240 Imperial

Well Name: Berens Trust #1-9  
 Surface Location: Sec. 9 - T17S - R14W  
 Bottom Location:   
 API: 15-009-25551-0000  
 License Number: 31275  
 Spud Date: 6/27/2011 Time: 00:00  
 Region: Barton County  
 Drilling Completed: 7/5/2011 Time: 07:00  
 Surface Coordinates: 330' FSL & 701' FWL  
 Bottom Hole Coordinates:   
 Ground Elevation: 1952.00ft  
 K.B. Elevation: 1961.00ft  
 Logged Interval: 2800.00ft To: 3570.00ft  
 Total Depth: 3550.00ft  
 Formation: Arbuckle  
 Drilling Fluid Type: Chemical/Fresh Water Gel

**SURFACE CO-ORDINATES**

Well Type: Vertical  
 Longitude: Latitude:  
 N/S Co-ord: 330' FSL  
 E/W Co-ord: 701' FWL

**LOGGED BY**

***Keith Reavis***  
*Consulting Geologist*

Company: Keith Reavis, Inc.  
 Address: 3420 22nd Street  
 Great Bend, KS 67530  
 Phone Nbr: 620-617-4091  
 Logged By: KLG #136 Name: Keith Reavis

**CONTRACTOR**

Contractor: Sterling Drilling Company  
 Rig #: 4  
 Rig Type: mud rotary  
 Spud Date: 6/27/2011 Time: 00:00  
 TD Date: 7/5/2011 Time: 07:00  
 Rig Release: Time:

**ELEVATIONS**

K.B. Elevation: 1961.00ft Ground Elevation: 1952.00ft  
 K.B. to Ground: 9.00ft

**NOTES**

Due to the favorable results of DST #1, it was recommended that 5 1/2 inch surface casing be set and cemented and the Berens Trust #1-9 be further tested through perforations in the Arbuckle.

The samples were saved and will be available for review at the Kansas Geological Survey Well Sample Library located in Wichita, KS

# Shelby Resources, LLC

## DAILY DRILLING REPORT


DATE	7:00 AM DEPTH	REMARKS
07/01/2011		Geologist Keith Reavis on location @ 1515 hrs, 2969 ft., drilling ahead Topeka, Heebner, Toronto, Douglas
07/02/2011	3283	drilling, Douglas, Lansing, BKC, congl, conduct short trip, drill into Arbuckle, show warrants test, TOH for DST #1, conducting DST
07/03/2011	3470	complete DST #1, successful test, RIH w/bit, drill ahead, second porosity show warrants DST, TOH for DST #2, conduct and complete DST #2, RIH w/bit
07/04/2011	3570	resume drilling, rathole to TD, RTD @ 0700 hrs, TOH for logs, conduct and complete logging operations, geologist off loc. @ 1440 hrs

# Shelby Resources, LLC

## WELL COMPARISON SHEET

DRILLING WELL					COMPARISON WELL				COMPARISON WELL			
Shelby Beren Trust 1-9 330' FSL & 701' FWL Sec. 9, T17S R14W					Reif - #1 Elwyn E/2 NE NW NW Sec. 16, T17S R14W				Alpine - #1 Dryden SE SW SW Sec. 16, T17S R14W			
1961 KB					1971 KB		Structural Relationship		1945 KB		Structural Relationship	
Formation	Sample	Sub-Sea	Log	Sub-Sea	Samp	Sub-Sea	Sample	Log	Log	Sub-Sea	Sample	Log
Topeka	2901	-940	2902	-941	2910	-939	-1	-2	2890	-945	5	4
Heebner	3133	-1172	3133	-1172	3142	-1171	-1	-1	3119	-1174	2	2
Toronto	3148	-1187	3146	-1185	3158	-1187	0	2				
Douglas	3160	-1199	3159	-1198	3171	-1200	1	2				
Brown Lime	3199	-1238	3199	-1238	3210	-1239	1	1	3184	-1239	1	1
Lansing	3212	-1251	3212	-1251	3222	-1251	0	0	3196	-1251	0	0
Muncie Cr.	3341	-1380	3342	-1381								
Base KC	3418	-1457	3417	-1456	3432	-1461	4	5				
Penn Congl	3425	-1464	3429	-1468	3439	-1468	4	0	3408	-1463	-1	-5
Congl Sand	np		np		3452	-1481						
Arbuckle	3458	-1497	3458	-1497	3475	-1504	7	7	3453	-1508	11	11
Total Depth	3570	-1609	3570	-1609	3481	-1510	-99	-99	3470	-1525	-84	-84

### DST #1

	<b>DRILL STEM TEST REPORT</b>	
	Shelby Resources LLC.  445 Union Blvd. Suite 208 Lakewood, Colorado 80228  ATTN: Keith R	Beren Trust#1-9  9/17S/14W Barton  Job Ticket: 16615 <b>DST#: 1</b>  Test Start: 2011.07.02 @ 09:40:00

GENERAL INFORMATION:

Formation: **Arbuckle**  
 Deviated: No Whipstock: ft (KB)  
 Time Tool Opened: 11:34:00  
 Time Test Ended: 19:11:00

Test Type: Conventional Bottom Hole (Initial)  
 Tester: Dylan E Ellis  
 Unit No: 3345/Great Bend/34

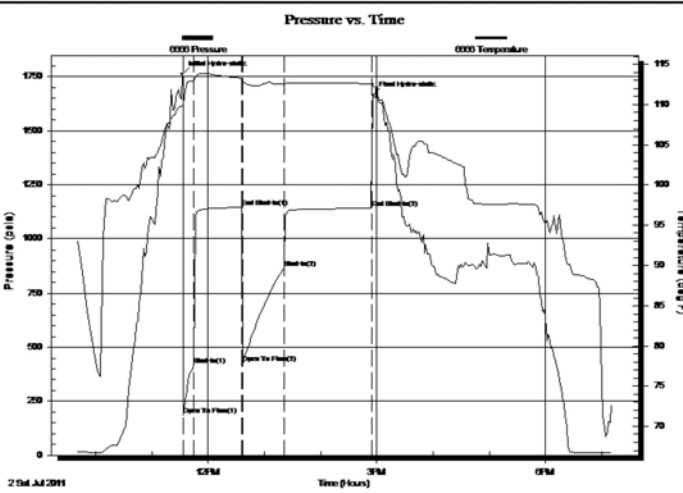
Interval: **3416.00 ft (KB) To 3470.00 ft (KB) (TVD)**  
 Total Depth: 3470.00 ft (KB) (TVD)  
 Hole Diameter: 7.88 inches Hole Condition: Fair

Reference Elevations: 1961.00 ft (KB)  
 1952.00 ft (CF)  
 KB to GR/CF: 9.00 ft

**Serial #: 6666 Outside**

Press@RunDepth: 867.93 psia @ 3466.52 ft (KB) Capacity: 5000.00 psia  
 Start Date: 2011.07.02 End Date: 2011.07.02 Last Calib.: 2011.07.03  
 Start Time: 09:40:00 End Time: 19:11:00 Time On Btm: 2011.07.02 @ 11:32:30  
 Time Off Btm: 2011.07.02 @ 14:56:00

TEST COMMENT: 1ST Opening 10 Minutes very strong blow/blow blew to bottom of bucket in 1 minute  
 1ST Shut-In 45 Minutes yes surface blow back  
 2ND Opening 45 Minutes strong blow/blow blew to bottom of bucket of water in 2 minutes  
 2ND Shut-In 90 Minutes yes



**PRESSURE SUMMARY**

Time (Min.)	Pressure (psia)	Temp (deg F)	Annotation
0	1762.00	109.92	Initial Hydro-static
2	185.25	109.97	Open To Flow (1)
13	416.55	112.98	Shut-In(1)
64	1144.29	113.31	End Shut-In(1)
65	427.36	112.92	Open To Flow (2)
109	867.93	112.54	Shut-In(2)
202	1140.41	112.58	End Shut-In(2)
204	1664.32	112.33	Final Hydro-static

**Recovery**

Length (ft)	Description	Volume (bbl)
128.00	Lightly Mud cut Oil	0.63
0.00	15% Mud 85% Oil	0.00
1799.00	Clean Gassy Oil	24.46
0.00	10% Gas 90% Oil	0.00
64.00	Lightly Oil and Mud cut Water	0.90
0.00	15% Oil 35% Mud 50% Water	0.00

**Gas Rates**

Choke (inches)	Pressure (psia)	Gas Rate (Mcf/d)

Superior Testers Enterprises LLC

Ref. No: 16615

Printed: 2011.07.03 @ 07:52:43

**DST #2**



**DRILL STEM TEST REPORT**

Shelby Resources LLC.  
 445 Union Blvd. Suite 208  
 Lakewood, Colorado 80228  
 ATTN: Keith R

**Beren Trust#1-9**  
**9/17S/14W Barton**  
 Job Ticket: 16616 **DST#: 2**  
 Test Start: 2011.07.03 @ 04:09:00

**GENERAL INFORMATION:**

Formation: **Arbuckle**

Deviated: No Whipstock: ft (KB)  
 Time Tool Opened: 05:30:30  
 Time Test Ended: 11:17:30

Test Type: Conventional Bottom Hole (Initial)  
 Tester: Dylan E Ellis  
 Unit No: 3345/Great Bend/34

Interval: 3476.00 ft (KB) To 3484.00 ft (KB) (TVD)  
 Total Depth: 3484.00 ft (KB) (TVD)  
 Hole Diameter: 7.88 inches Hole Condition: Fair

Reference Elevations: 1961.00 ft (KB)  
 1952.00 ft (CF)  
 KB to GR/CF: 9.00 ft

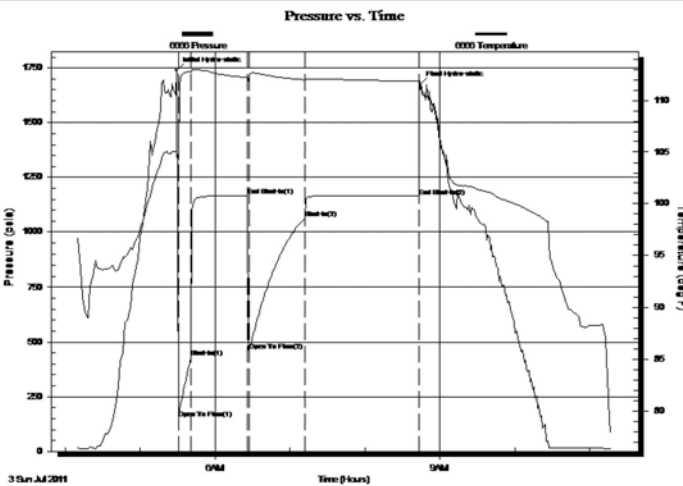
**Serial #: 6666**

**Outside**

Press@RunDepth: 1061.39 psia @ 3481.00 ft (KB)  
 Start Date: 2011.07.03 End Date: 2011.07.03  
 Start Time: 04:09:00 End Time: 11:17:30

Capacity: 5000.00 psia  
 Last Calib.: 2011.07.03  
 Time On Btm: 2011.07.03 @ 05:29:00  
 Time Off Btm: 2011.07.03 @ 08:44:00

TEST COMMENT: 1ST Opening 10 Minutes good blow/blow blew to bottom of bucket in 1 minute  
 1ST Shut-In 45 Minutes yes surface blow back  
 2ND Opening 45 Minutes good blow/blow blew to bottom of bucket in 1 minute  
 2ND Shut-In 90 Minutes yes surace blow backk



**PRESSURE SUMMARY**

Time (Min.)	Pressure (psia)	Temp (deg F)	Annotation
0	1739.55	105.02	Initial Hydro-static
2	149.65	104.32	Open To Flow (1)
12	429.48	112.73	Shut-In(1)
57	1166.59	112.22	End Shut-In(1)
58	459.35	112.38	Open To Flow (2)
103	1061.39	112.00	Shut-In(2)
194	1162.33	111.87	End Shut-In(2)
195	1673.50	111.88	Final Hydro-static

**Recovery**

Length (ft)	Description	Volume (bbl)
2300.00	Salt Water 100%	30.32
0.00	Chlorides were 43,000.0	0.00
0.00	Resistivity was .14 @ 69 degrees	0.00

**Gas Rates**

Choke (inches)	Pressure (psia)	Gas Rate (Mcf/d)

Superior Testers Enterprises LLC

Ref. No: 16616

Printed: 2011.07.03 @ 23:32:00

**ROCK TYPES**

Cht vari	Dolsec	shale, gm	shale, red
Chtcongl	Lmst fw<7	shale, gry	
Dolprim	Lmst fw>7	Carbon Sh	

**ACCESSORIES**

**MINERAL**

- P Pyrite
- \* Sandy
- \*\* Silty
- △ Chert White

**FOSSIL**

- ∩ Bioclastic or Fragmental
- F Fossils < 20%
- ⊕ Oolite
- ♁ Pellets
- ⊕ Oomoldic

**STRINGER**

- Limestone
- Sandstone
- Shale
- green shale
- red shale

**TEXTURE**

- C Chalky
- L Lithogr

**OTHER SYMBOLS**

**MISC**

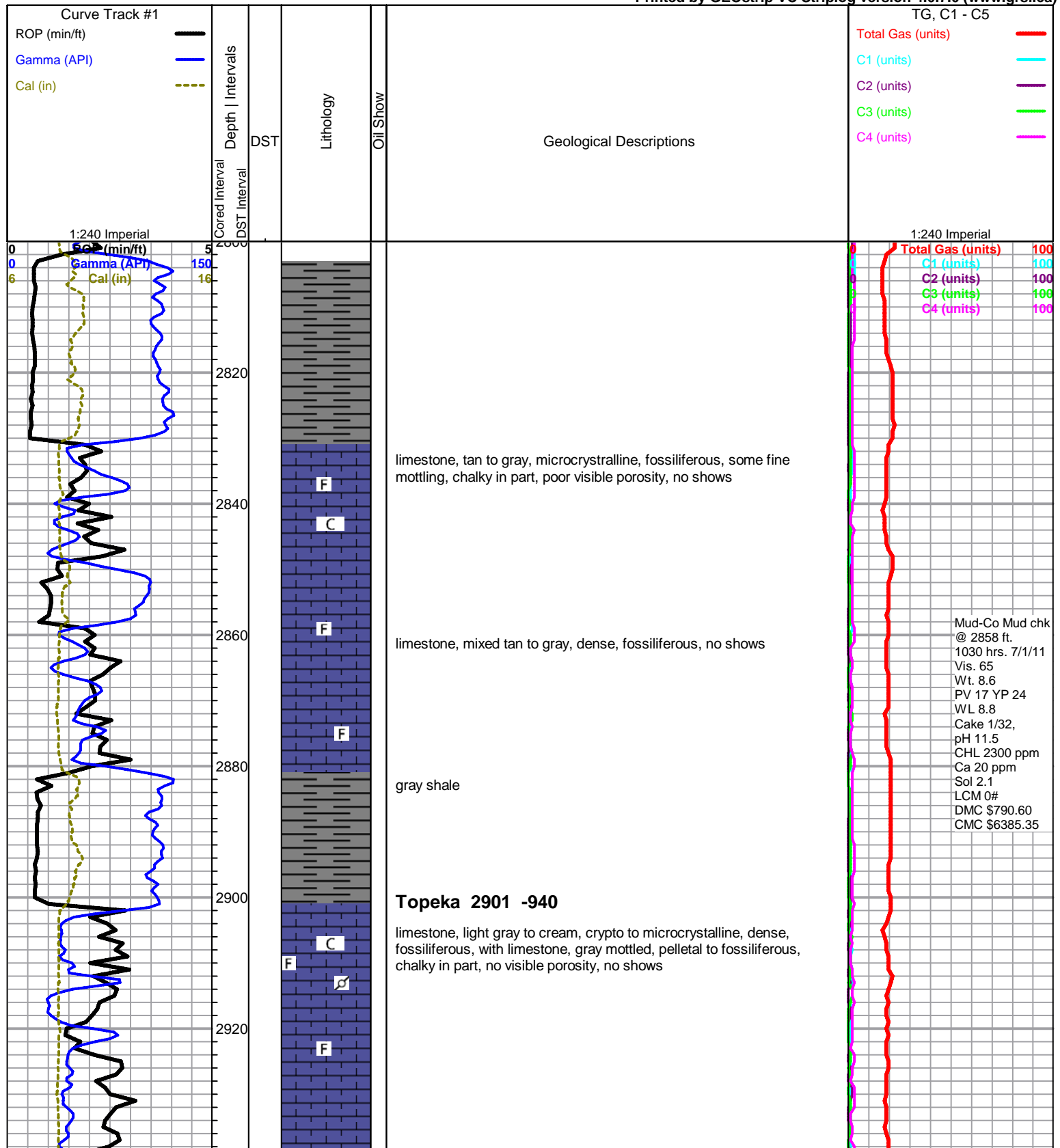
Daily Report

**DST**

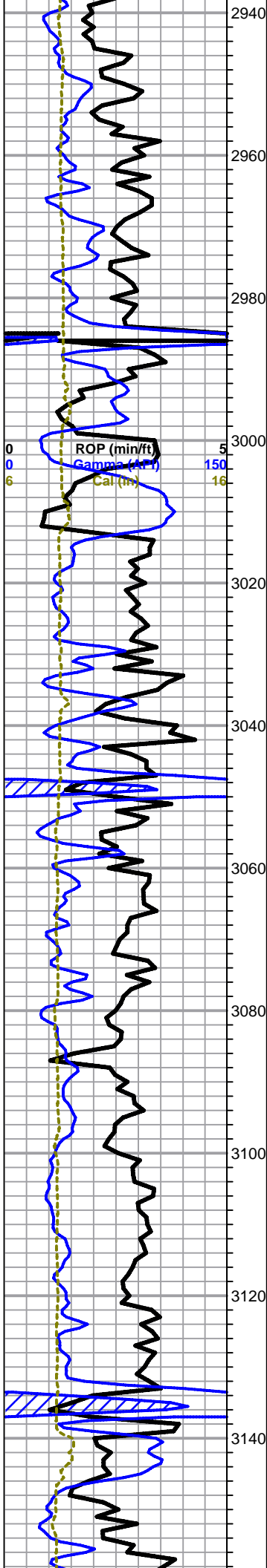
DST Int

- Daily Report
- Digital Photo
- Document
- Folder
- Link
- Vertical Log File
- Horizontal Log File
- Core Log File
- Drill Cuttings Rpt

DST alt  
 Core



Mud-Co Mud chk  
@ 2858 ft.  
1030 hrs. 7/1/11  
Vis. 65  
Wt. 8.6  
PV 17 YP 24  
WL 8.8  
Cake 1/32,  
pH 11.5  
CHL 2300 ppm  
Ca 20 ppm  
Sol 2.1  
LCM 0#  
DMC \$790.60  
CMC \$6385.35



limestone, cream to gray, mostly cryptocrystalline, lithographic to fossiliferous, dense, no shows

limestone as above, with some chalky grainy tan-gray fossilifeous, no shows

limestone, tan to light gray, microcrystalline, chalky, fossiliferous, grainy in part, no shows

limestone, light gray to pale green, cryptocrystalline, fossiliferous to lithographic, dense, no shows

**Queen Hill Shale 3047 -1086**

limestones, mixed gray to cream, non-descript dense fossiliferous, some chalky

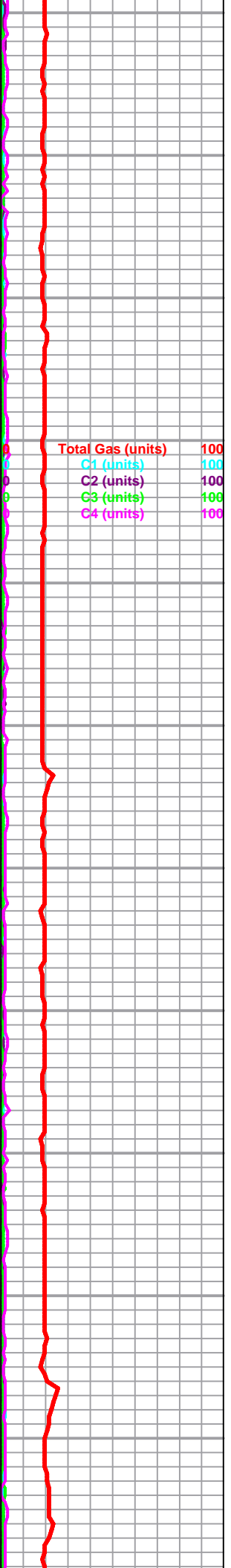
as above

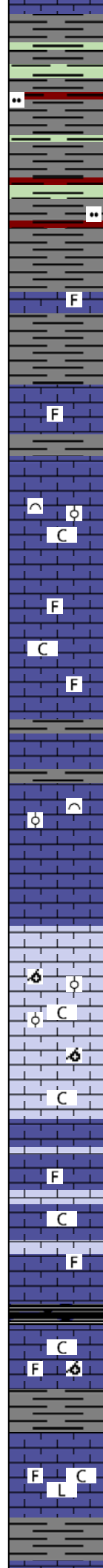
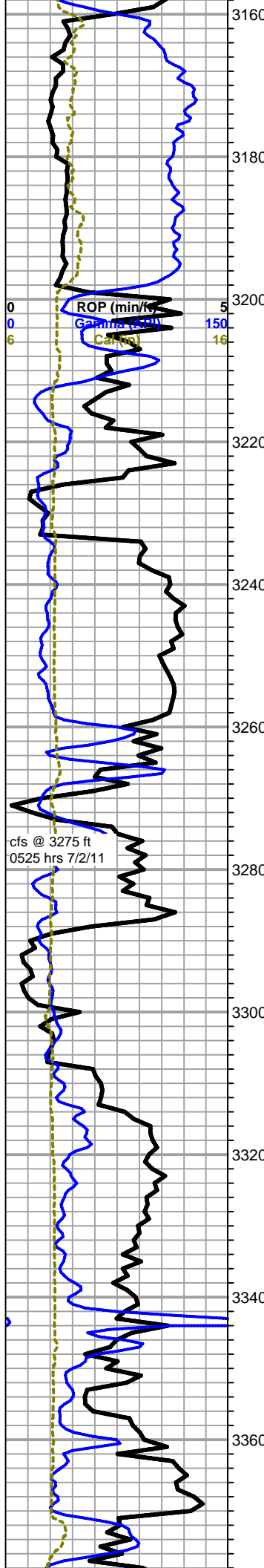
**Heebner 3133 -1172**

black carbonaceous shale

**Toronto 3149 -1187**

limestone, cream, cryptocrystalline, fossiliferous, chalky, poor visible porosity, no shows





**Douglas 3160 -1199**

shale, mostly gray, with mixed green and red, some silty

**Brown Lime 3199 -1238**

limestone, tan, micro-cryptocrystalline, dense, fossiliferous

**Lansing 3212 -1251**

limestone, gray to cream, cryptocrystalline, chalky, fossiliferous, poor visible porosity, no shows

limestone, cream, bioclastic to oolitic, chalky, poor visible porosity, few small pieces with black dead stain, spotty faint fluorescence, no show free oil, no odor

limestone, mixed light gray to cream, cryptocrystalline, fossiliferous, chalky in part, no visible porosity, no shows

as above

limestone, cream to light gray, oolitic to bioclastic, mostly fused clasts, trace vugs, some fair light brown stain, some scaly sheen, no show free oil, no odor, poor fluorescence

limestone, gray to white, microcrystalline, fossiliferous to lithographic, chalky, some scattered black stain, no show free oil, no odor

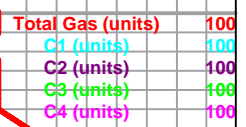
limestone, white to light gray, microcrystalline, oolitic to oomoldic, some fair porosity, scattered fair brown saturated and interoolite staining, scaly sheen of free oil, no odor, no fluorescence, no cut

limestone, white to light gray, mixed fossiliferous, chalky to dense, some scattered porosity, some very light staining, no show free oil, no odor, no fluorescence

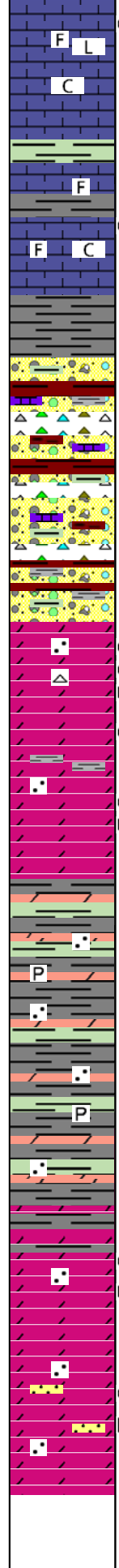
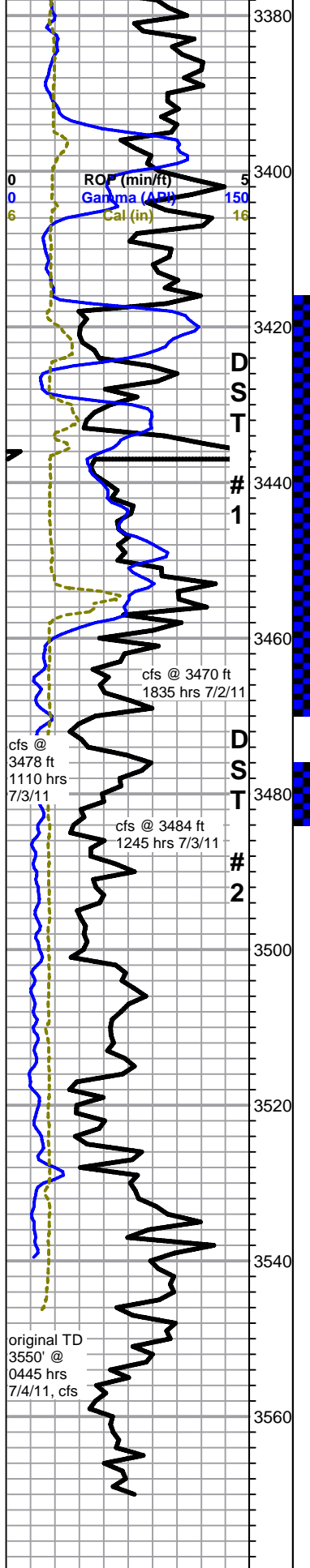
**Muncie Creek 3341 -1380**

limestone, white to cream, crypto-microcrystalline, fossiliferous, trace fine oomoldic (from above?) with slight brown stain, and trace weathered chalky white limestone, fossiliferous, dead black stain, no show free oil, no odor

limestone, white to gray, micro-cryptocrystalline, fossiliferous, dense, some dark gray lithographic, 1 piece light golden edge stain, no show free oil, no odor



Mud-Co Mud chk @ 3363 ft. 1010 hrs. 7/2/11 Vis. 53 Wt. 9.3 PV 14 YP 18 WL 10.2



limestone, white to gray, microcrystalline, chalky fossiliferous to cryptocrystalline dense lithographic, poor overall visible porosity, some scattered spotty stains, no show free oil, no odor, scattered fair mineral fluorescence

limestone as above, few small vugs, scattered stain, influx green sandy shale

mixed limestones as above, some fine crystalline with secondary calcite and fractures, some brown, cherty, dense

**Base KC 3418 -1457**

3440 sample, still mostly mixed limestones, increase red shale, some limestone is white fossiliferous to oolitic with slight stain

grading to conglomerate, mixed shales, mostly red/maroon, some mottled, yellow to orange cherts, some oolitic cherts, mixed limestone

Beren Trust 1-9 DST-1.pdf  
Beren Trust 1-9 DST-2.pdf

**Arbuckle 3458 -1497**

dolomite, white to light gray and pale green, fine crystalline rhombic, good intercrystalline porosity, wormy gray/black to brown stain, fair show free oil, slightly gassy, fair odor, white fluorescence, with some microcrystalline, white, dense, mostly barren, some white chert and trace sandy dolomite with slight stain

dolomite, white, microcrystalline, dense cherty, a few pieces very pyritic, a few pieces very sandy, trace stain, no free oil, fleeting odor, some dirty gray to gray/green very dense blocky sandy (large grains) shale

@ 3477' - dolomite, white, micro-fine crystalline, sub-rhombic, some rhombic edges on dense cryptocrystalline matrix, poor to scattered fair intercrystalline porosity, some small vugs, appx. 30% with spotty light brown to gray/black intercrystalline stain, trace free oil on break, fleeting odor, bright bluish white fluorescence, no nat. cut, bluish milky cut on break

@ 3491' - shale (or claystone) gray to gray/green and bright green, very dense blocky, sandy (large grains) and dolomite, 10-20% mixed white to cream, micro to cryptocrystalline, dense, poor visible porosity, abundant pyrite in samples, no shows

as above

dolomite, white to light gray, fine crystalline rhombic, with some fair intercrystalline porosity and light brown/gray stain, microcrystalline sub-rhombic, poor visible porosity, barren, some sandy, white cryptocrystalline, very dense, trace free oil in fine rhombic on break, slight odor under lamp, no odor in free cup, good white fluorescence, few pieces streaming milky white cut

dolomite, light gray to cream, micro to cryptocrystalline, very sandy, poor visible porosity, barren, some light gray microcrystalline, rhombic, scattered intercrystalline porosity, few pieces spotty dark brown stain, trace clingy tarry oil, no odor, poor cut, overall pale bluish white to pale green fluor., some sandstone stringers, fine grained, well rounded and cemented

Rotary TD 3570' @ 0700 hrs 7/4/11  
Superior Wireline TD 3570'  
Complete Logging Operations 1400 hrs 7/4/11

