



TRILOBITE TESTING, INC.

DRILL STEM TEST REPORT

Wold Oil Properties
 139 W 2nd. St STE 200
 Casper Wy. 82601
 ATTN: Robert Hendrix

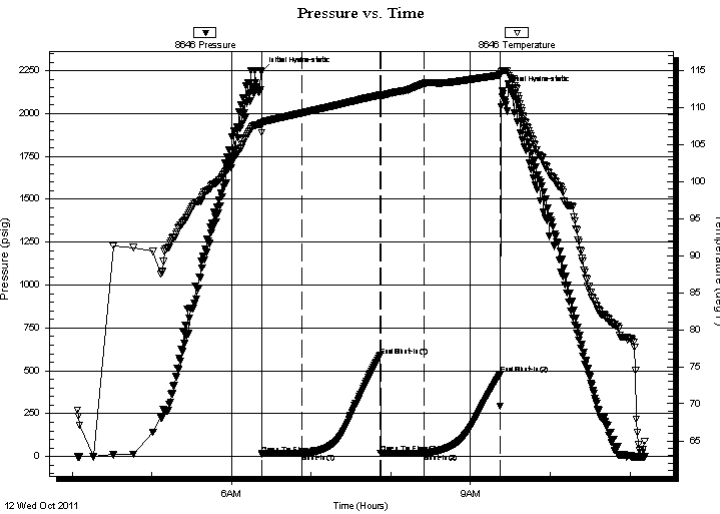
2-13-35 Logan KS
Sirvta #1-2
 Job Ticket: 43216 **DST#: 3**
 Test Start: 2011.10.12 @ 04:04:15

GENERAL INFORMATION:

Formation: **Lower Altamont**
 Deviated: No Whipstock: ft (KB)
 Test Type: Conventional Bottom Hole (Reset)
 Time Tool Opened: 06:22:45 Tester: Mike Roberts
 Time Test Ended: 11:11:30 Unit No: 48
 Interval: **4313.00 ft (KB) To 4350.00 ft (KB) (TVD)** Reference Elevations: 3057.00 ft (KB)
 Total Depth: 4350.00 ft (KB) (TVD) 3047.00 ft (CF)
 Hole Diameter: 7.88 inches Hole Condition: Fair KB to GR/CF: 10.00 ft

Serial #: 8646 Outside
 Press @ Run Depth: 19.99 psig @ 4345.00 ft (KB) Capacity: 8000.00 psig
 Start Date: 2011.10.12 End Date: 2011.10.12 Last Calib.: 2011.10.12
 Start Time: 04:04:15 End Time: 11:11:30 Time On Btm: 2011.10.12 @ 06:22:30
 Time Off Btm: 2011.10.12 @ 09:24:00

TEST COMMENT: IF: Built to weak surface blow
 IS: No return blow
 FF: No blow
 FS: No return blow



PRESSURE SUMMARY

Time (Min.)	Pressure (psig)	Temp (deg F)	Annotation
0	2242.56	107.93	Initial Hydro-static
1	14.82	106.57	Open To Flow (1)
31	18.74	109.27	Shut-In(1)
90	588.23	111.66	End Shut-In(1)
90	18.12	111.44	Open To Flow (2)
123	19.99	113.23	Shut-In(2)
180	478.32	114.37	End Shut-In(2)
182	2132.11	115.01	Final Hydro-static

Recovery

Length (ft)	Description	Volume (bbl)
5.00	mud with oil spots	0.02

* Recovery from multiple tests

Gas Rates

Choke (inches)	Pressure (psig)	Gas Rate (Mcf/d)



**TRILOBITE
TESTING, INC.**

DRILL STEM TEST REPORT

FLUID SUMMARY

Wold Oil Properties

2-13-35 Logan KS

139 W 2nd. St STE 200
Casper Wy. 82601

Sirvta #1-2

Job Ticket: 43216

DST#: 3

ATTN: Robert Hendrix

Test Start: 2011.10.12 @ 04:04:15

Mud and Cushion Information

Mud Type: Gel Chem

Cushion Type:

Oil API:

0 deg API

Mud Weight: 9.00 lb/gal

Cushion Length:

ft

Water Salinity:

0 ppm

Viscosity: 58.00 sec/qt

Cushion Volume:

bbbl

Water Loss: 7.20 in³

Gas Cushion Type:

Resistivity: 0.00 ohm.m

Gas Cushion Pressure:

psig

Salinity: 8900.00 ppm

Filter Cake: 2.00 inches

Recovery Information

Recovery Table

Length ft	Description	Volume bbl
5.00	mud w ith oil spots	0.025

Total Length: 5.00 ft Total Volume: 0.025 bbl

Num Fluid Samples: 0

Num Gas Bombs: 0

Serial #:

Laboratory Name:

Laboratory Location:

Recovery Comments:

