



Pro-Stake LLC
 Oil Field & Construction Site Staking
 P.O. Box 2324
 Garden City, Kansas 67846
 Office/Fax: (620) 276-6159
 Cell: (620) 272-1499



q012012k
 PLAT NO.

9814
 INVOICE NO.

Berexco, Inc.
 OPERATOR
Scott County, KS
 COUNTY

Huslig #2-28
 LEASE NAME
1922' FNL - 1542' FEL
 LOCATION SPOT

28 **18s** **31w**
 Sec. Twp. Rng.

SCALE: N/A
 DATE STAKED: Jan 19th, 2012
 MEASURED BY: Luke R.
 DRAWN BY: Luke R.
 AUTHORIZED BY: Evan M.

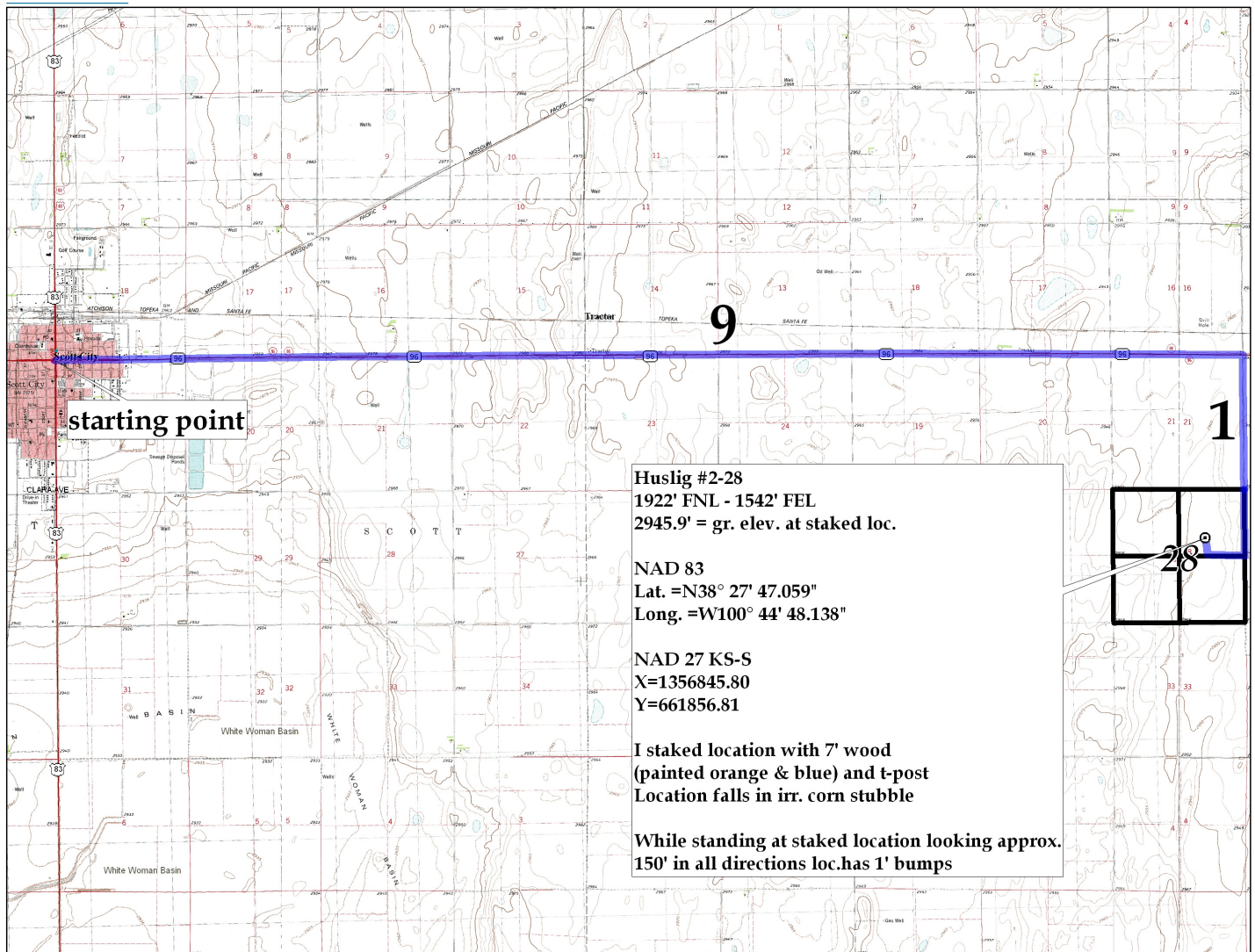


GR. ELEVATION: 2945.9'

Directions: From the center of Scott City, KS at the intersection of Hwy 83 & Hwy 96 – Now go 9 miles East on Hwy 96 – Now go 1 mile South on Union Rd to the NE corner of section 28-18s-31w – Now go 0.5 mile South on Union Rd to ingress stake West into – Now go 0.3 mile West on lease rd to ingress stake North into – Now go approx. 730' North through irr. corn stubble into staked location.

Final ingress must be verified with land owner or Operator.

This drawing does not constitute a monumented survey or a land survey plat.
This drawing is for construction purposes only.



Huslig #2-28
1922' FNL - 1542' FEL
2945.9' = gr. elev. at staked loc.

NAD 83
Lat. =N38° 27' 47.059"
Long. =W100° 44' 48.138"

NAD 27 KS-S
X=1356845.80
Y=661856.81

I staked location with 7' wood (painted orange & blue) and t-post
Location falls in irr. corn stubble

While standing at staked location looking approx. 150' in all directions loc.has 1' bumps