

60
80
3500
20
40
60
80
3600
20
40
60
80

SOME W. V. SCAT IT GRY BLK SPK'D
ENLY SILTY & SLI SILTY SILT

1M. CRM. BLUE GRAY TAN EN VIN
TO FINE SUB-CILIND & PRED DENSE
& HARD PLUS CONS SU AS ABOVE
TO SILT AS ABOVE

SH. MED GRY GRY GRN RED SMDK
GRY W. SCAT LIM AS ABOVE & SCAT
SILT AS ABOVE

1M. BLUE TAN & BRN EN VIN PRED
DENSE & HARD W. GRY GRN RED
GRN DY GRY & BLK SH TO SILT AS
ABOVE

SH. MED GRY GRY GRN RED GRN W.
V. SCAT LIM AS ABOVE

SH AS ABOVE W. BLUE TAN & BRN
EN VIN PRED DENSE HARD LM

SH & LIM AS ABOVE W. SCAT BLK
COBB IN PORT STILL RED & GRN SH

LENER **3592**
-2083

SH. BLUE & BRN SH-BLK COBB GRY
GRY GRN RED & DY GRY SH. BLUE CRM
BLUE GRY TAN & BRN EN VIN SUB-
CILIND TO DENSE HARD LM

1M. W. CRM. BLUE & IT GRY EN VIN SUB-
CILIND & MED HARD - SH AS ABOVE
STILL HARD RED SH

SOME W. SIL IN SH ESPECIALLY GRN
SH

SOME AS ABOVE W. TP IT GRY EN GRN
HARD COBB SILT

1M. CRM. BLUE GRY TAN BRN EN
VIN PRED DENSE & HARD W. CONS
MED TO DY GRY GRY GRN & V. SCAT
GRN & BLK SH

3700

SAME AS ABOVE. RED SH. STILL
CONS. RED SH

20

SH. MED TO DK GRAY & GRAY-GRN. STILL
CONS. RED SH W. SCAT. IM. AS ABOVE

40

SAME AS ABOVE

60

SH. MED GRAY-GRY-GRN W. SCAT. RED
& BLK SH. PLUS BLUE GRAY TANK BRN
FN. YAL. SUR. CHALKY TO DENT. HARD
LM. & FEIN. PIECES. LT GRAY BLK SP. 1/2
EN. GRAINED. COMP. SILT

80

SAME AS ABOVE W. SCAT. BLK. CARB.
IN PART. SH. - POOR. TPLE. - RED. RED. SH

3800

SAME AS ABOVE - RED. CH

20

SH. MED. GRAY-GRY-GRN. RED & TR. BLK
W. SCAT. BLUE. TAN & BRN. PRE. DNCE
HARD. LM

40

SH. LM. AS ABOVE

60

SH. MED TO DK GRAY-GRY-GRN. BLK
(TR. CARB.) - STILL. RED. SH. U. SCAT. IM.
AS ABOVE

LANSING

3872

2363

80

LM. COM. LT. GRAY. BLUE. TAN & BRN. FN.
YAL. SUR. CHALKY. TR. CHALKY TO DENT. &
HARD. W. SILT. AS ABOVE

3900

SAME AS ABOVE

20

LM. AS ABOVE W. MED. DK. GRAY-GRY-GRN
& SCAT. RED. SH. & TR. BLK. SH.



FFS

60
80
4000
20
40
60
80
4100
20
40
60
80

5970 LM. BLUE TAN & BRN. ODM & TPOUT
ENLY ODM POR. SUB-CHUKY & CHUKY
SOFT TO PART TULL TO TR. SEOL-BRIGHT
KLAUP. TO TINY BUBBLE (AIR ??) - HAADOR
OR GAS VICK?

LM. BLUE GRAY TAN & BRN. SM. ODM & SLT
ODM & X ABOVE BLUE W. DENSE & HARD
TO CURTY LM.

LM. AS ABOVE IN MED GRAY GRAY-CRN SLT
SUCTY & DK GRAY & BLK SH.

LM. TAN GRAY & BRN. PARTLY MIXED EN
XIN. TO FOST. PRED. DENSE & HARD W. V.
SOFT SH. AS ABOVE.

LM. LT GRAY BLUE TAN TO BRN. DK GRAY
(ARGILL. IN PART) EN. XIN. PRED. DENSE
& HARD W. MED TO DK GRAY GRAY-CRN. W. TR.
BLK SH.

SH. MED TO DK GRAY GRAY-CRN & BLK W.
BLUE TAN & DK GRAY (TR. ARGILL.) PRED.
DENSE. HARD LM.

LM. LT & DK GRAY BLUE & TAN MIXED &
BATTLED IN PART. TR. ARGILL. W. CONK. MED.
TR. DK GRAY GRAY-CRN & BLK SH.

SH. MED TO DK GRAY & BLK. SM. GRAY-CRN
W. SCAT. LM. AS ABOVE.

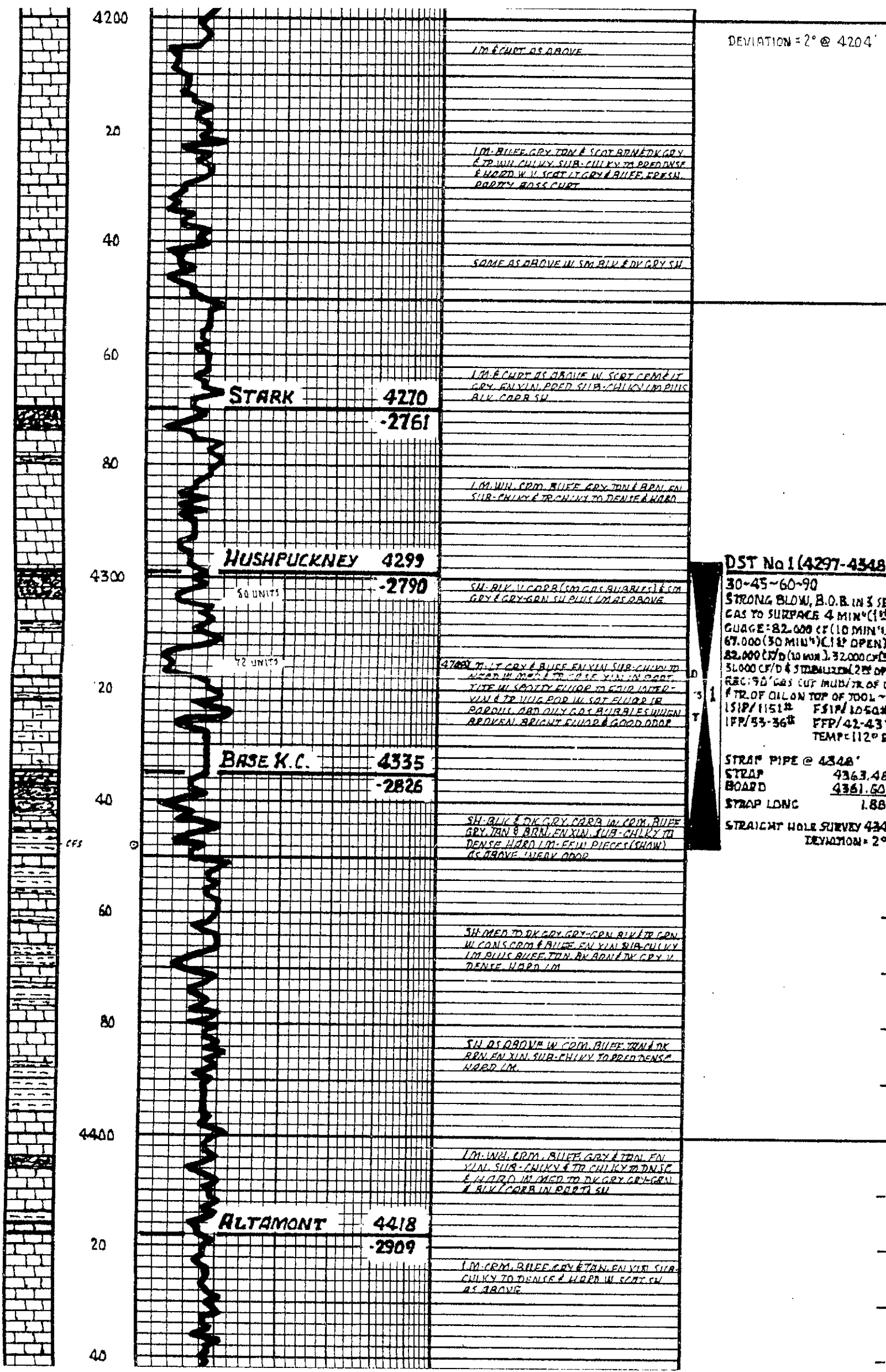
SH. MED TO DK GRAY BLUE & SM. GRAY-CRN.
W. TAN & TR. BRN. & DK GRAY (NEAR BLK)
V. DENSE. HARD LM.

LM. W. ODM. LT GRAY CHUKY & SUB-CHUKY
TO SCOT. DENSE & HARD W. TR. BRN. IN GRAY
SO. V. DENSE. HARD. LM. AS ABOVE. PLUS
SCAT. TR. SH. AS ABOVE.

LM. BLUE TAN & DK GRAY PRED. DENSE. HARD
LM. & MED TO DK GRAY GRAY-CRN & BLK SH.

LM. BRN. BLUE GRAY TAN & BRN. EN. XIN. W.
SCAT. SH. AS ABOVE.

LM. BRN. BLUE LT GRAY TAN & BRN. EN. XIN.
PRED. DENSE & HARD PLUS SM. TR. BRN. &
BLK. TR. ARGILL. DENSE. HARD. LM. PLUS
TR. W. CHUKY. LM. LT GRAY. EN. XIN. W. V.
TR. BRN. TO NEAR ORG. PART.



DEVIATION = 2° @ 4204'

1M & CRT AS ABOVE

1M. BLUE GR. TAN & SCOT. BROWN GR. & TR. W/ CHLKY SUB-CHLKY TO DENSE & HARD W. N. SCOT. LT GR. & BLUE. FRESH. BDDY. ROSS CRT

SAME AS ABOVE IN SM. BLK & DV GR. SW

STARK 4270 -2761

1M. CRT AS ABOVE IN SCOT. CR. & GR. EN. XIN. P. SUB-CHLKY TO DENSE BLK. CORR SW

1M. W/ CR. BLUE GR. TAN & BROWN. SUB-CHLKY TO TR. CHLKY TO DENSE & HARD

HUSHPUCKNEY 4299 -2790

SH. BLK. V. CORR. (M. G. S. B. U. B. L. Z. L. S. M. GR. & GR. GRN. SUB. BLK. W/ AS ABOVE

4700 W. LT GR. & BLUE. EN. XIN. SUB-CHLKY TO HARD IN MED. TO CR. XIN. IN PART. TYP. W. SPOTTY FLUR. TO FLUR. INTER-VIN. & TR. W/ DOR. W. SAT. FLUR. IN BDDY. AND DILY. GAS. BUBBLES WHEN BROKEN. BRIGHT FLUR. & GOOD ODR.

BASE K.C. 4335 -2826

SH. BLK. & DK GR. CORR. IN CR. BLUE GR. TAN & BRN. EN. XIN. SUB-CHLKY TO DENSE. HARD. LM. FEIN. PIECES (SHOW) AS ABOVE. INEVY ODR.

SH. MED. TO DK GR. GR. GRN. BLK. TR. GRN. W. CONS. CR. & BLUE. EN. XIN. SUB-CHLKY. 1M. BLUE. BLUE. TAN. BR. BROWN. GR. V. DENSE. HARD. LM.

SH. AS ABOVE IN CR. BLUE. TAN. & BRN. EN. XIN. SUB-CHLKY TO DENSE. HARD. LM.

1M. W/ CR. BLUE. GR. & TAN. EN. XIN. SUB-CHLKY TO TR. CHLKY TO DENSE & HARD. W. SCOT. SW & BLK. CORR. IN BDDY. SW

ALTAMONT 4418 -2909

1M. CR. BLUE. GR. & TAN. EN. XIN. SUB-CHLKY TO DENSE & HARD. W. SCOT. SW AS ABOVE

DST No 1 (4297-4348)

30-45-60-90
 STRONG BLOW, B.O.B. IN 3 SE
 GAS TO SURFACE 4 MIN (1ST
 GAUGE = 82.000 CF (10 MIN)
 67.000 (30 MIN) (1ST OPEN)
 82.000 (10 MIN) 32.000 CF
 31.000 CF/D & STABILIZED (2ND ON
 REC) 90' GAS CAP. MULT. OF C
 1 FT. OF OIL ON TOP OF TOOL -
 151P/1151R F51P/1050R
 1PP/53-36R FFP/42-431
 TEMP = 112°F

STRAP PIPE @ 4348'
 STRAP 4363.48
 BOARD 4361.60
 STRAP LONG 1.88

STRAIGHT HOLE SURVEY 434
 DEVIATION = 2°

PAWNEE 4452

-2943

WARD
SM. BLV. CARB. W. MED. TO DK. GRN. (BUBBLES)
PLUS BLUE EN. YIN. E. OSS. SUB-CHILKY
TO PRED. DENSE. HARD IN SCAT. PIECES
W. BOOR. INTD. YIN. PAR. E. SAND. GAS
BUBBLES. DULL. FLOR. AND. ADOR.

1M. RUFF. LT. GR. TAN. E. BRN. EN. YIN.
SUB-CHILKY TO PRED. DENSE. E. HARD

SM. BLV. CARB. W. MED. TO DK. GRN. E. BRN.
PLUS BRN. CRM. BLUE. GR. TAN. E. BRN.
EN. YIN. SUB-CHILKY TO DENSE. E. HARD

CHEROKEE 4498

-2989

SUB. BLV. CARB. W. DK. GR. GR. GRN. E.
GRN. PLUS. CRM. BLUE. GR. TAN. E. BRN.
EN. YIN. SUB-CHILKY (TR. CHILKY TO DENSE.
HARD. 1M.

1M. RUFF. GR. TAN. E. BRN. EN. YIN.
PRED. DENSE. E. HARD IN V. SCAT. MED. TO
DK. GR. GRN. E. GR. GRN. SU.

SAME W. SM. BLV. CARB. SU.

MISSISSIPPIAN 4542

-3033

9540) CHRT. WH. CRM. LT. GR. SM. CON. TINTED.
FRESH. FRACTURED. DENT. E. WENT. IN
REAL. DK. GR. E. BLV. STN. PRED. V. HARD. 1E
WEATH. SM. AP. FAVORABLE. SM. GAS. BUBBLES
IMPR. PRESSED. E. SCAT. NEAR. CLEAR. OIL
DROPLETS. OR. WATER. (DOES. NOT. FLOR. NO. OOR.

9570) CHRT. FRESH. TO. PRED. IMP. FUR. E. TRIP.
W. FAIR. PAR. BRN. TO. BLV. SPOTTY. TO. PRED.
SAT. STN. PAR. AND. BRN. LITTLE. (SEMI-
GATED. E. STRINGY. TO. PRED. LIVE. OIL. GASSY
OIL. DROPLETS. - GOOD. OOR.

9580) SAME. AS. ABOVE. W. ST. ENCR. IN. FRESH.
CHRT. - GOOD. OOR.

CHRT. AS. ABOVE. PLUS. SCAT. BLUE. TAN. E.
BRN. EN. YIN. DENSE. HARD. 1M. FAIR. OOR.

1M. CRM. BLUE. GR. TAN. E. BRN. EN. YIN.
PRED. DENSE. E. HARD. E. ALL. CHRT. W. FEIN.
'SAND' PIECES. AS. DARK. - FAINT. OOR.

1M. AS. ABOVE. W. SCAT. GRN. TINTED.
EN. YIN. DENSE. HARD. 1M. E. CARB. CRM.
E. LT. GR. FRESH. SUB-TRANSI. TO. APRA.
SUPP. CHRT.

SAME. AS. ABOVE.

1M. CRM. BLUE. GR. TAN. E. BRN. EN. YIN.
TINTED. EN. YIN. SUB-CHILKY. TO. PRED.
DENSE. E. HARD. IN. SCAT. GRN. MED. TO
DK. GR. E. SM. BLV. SU.

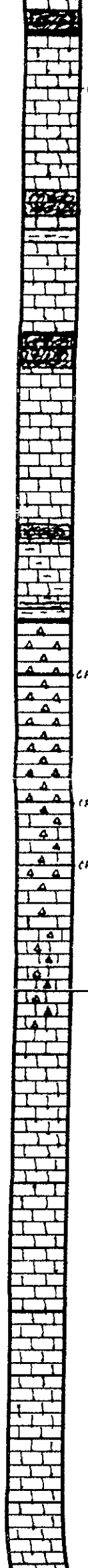
1M. AS. ABOVE. W. CRM. BRN. EN. YIN. DENSE.
HARD. 1M. TR. BRN. EN. YIN. SUPP. SU.
TRANSI. CHRT. LUCE. IN. SU. PARTICULAR.
GRN.

1M. E. CHRT. AS. ABOVE. W. BRN. EN. YIN. SU.

DEVIATION: 1° @ 4550'

1375 UNITS

60
80
4500
20
40
60
80
4600
20
40
60
80



4700
20
40
60
80
4800
20
40
60
80
4900
20

1M. WIL. COM. - GRY. LGRA. TINTED BARK
E TO TAN EN XIN. SUB. CHLKY. ETR CHLKY
TO DENSE & HARD

SU. CR. MED. GY. GRY. CRAL. & BLK.
RED. MAR. W. IM. AS ABOVE

1M. WIL. CHLKY. W. CR. BURE. IT. GRY.
GR. TINTED. E. TAN. OP. DENSE &
HARD. W. IT. GRY. WIL. FRESU. SUB. TRANSI.
W. SU. AS ABOVE

KINDERHOOK 4756
-3247

SU. MED. TO DY. CR. CON. CON. & CON.
E TO BLK.

SIMON TO DY. GRY. CON. & BLK.

DEVIATION = 1 3/4° @ 4801

CHATTANOOGA 4812
-3303

SU. AS ABOVE. W. WIL. COM. BURE. IT.
GRY. & SM. TAN. EN X. W. SUB. CHLKY.
TO DENSE & HARD. W. SU. AS ABOVE

50 UNITS

SU. BLK. BRNISH-BLK. CRAL. GAS
BUABLES. DIALOMITE. (SPORE BEARING)

VIOLA 4844
-3335

SU. CR. MED. & SPORE BEARING. AS
ABOVE. W. WIL. COM. BURE. IT. GRY. EN XIN.
SUB. CHLKY. TO DENSE & HARD. IM.

1M. AS ABOVE. PLUS SCOT. & SM. MED. XIN.
E TO CHLKY. IM.

1M. CR. BURE. GRY. (TAN. EN XIN. DENSE
& HARD. W. GR. CR. TAN. W. TINY
BLK. SP. S. (MICRO-ORGANISMS). FRESH
TILL CHOT

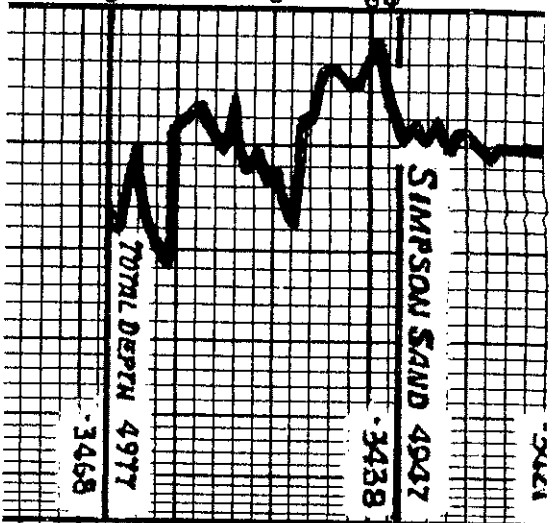
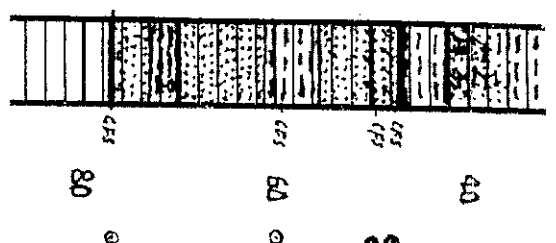
1M. & CHOT. AS ABOVE

SIMPSON 4930
-3421

SOME W. SM. IT. GRY. EN. MED. XIN. IM.
& CONS. CHOT. AS ABOVE

SAME SCOT. MEDIA. DY. GRY. CON. GRY.
CON. LTR. BURE. SU.
9968 DST. DIALOMITE. IT. GRY. ETR. GR. EN.
GRAINED. CHOT. W. BOB. BOB. HARD. BTH.
KAR. EN. TO. WIL. BTH. OIL. BOB. BTH. IM.

DST No. 2(4916-1)
30-45-90-90
WEAK BLOW INCREASE
2" IN BUCKET (1ST OF)
WEAK BLOW SLOW IN
TO 3 3/4" (2ND OPEN)
REC: 50' MUDDY WATER
OIL & 125' MUDDY WATER
(TT. 000)
158/1678. 5512/1



4968) 50 FT. MUD. W. L. T. GRY. & SP. GR. S. S.
 4969) 50 FT. MUD. W. L. T. GRY. & SP. GR. S. S.
 4970) 50 FT. MUD. W. L. T. GRY. & SP. GR. S. S.
 4971) 50 FT. MUD. W. L. T. GRY. & SP. GR. S. S.
 4972) 50 FT. MUD. W. L. T. GRY. & SP. GR. S. S.
 4973) 50 FT. MUD. W. L. T. GRY. & SP. GR. S. S.
 4974) 50 FT. MUD. W. L. T. GRY. & SP. GR. S. S.
 4975) 50 FT. MUD. W. L. T. GRY. & SP. GR. S. S.
 4976) 50 FT. MUD. W. L. T. GRY. & SP. GR. S. S.
 4977) 50 FT. MUD. W. L. T. GRY. & SP. GR. S. S.
 4978) 50 FT. MUD. W. L. T. GRY. & SP. GR. S. S.
 4979) 50 FT. MUD. W. L. T. GRY. & SP. GR. S. S.
 4980) 50 FT. MUD. W. L. T. GRY. & SP. GR. S. S.
 4981) 50 FT. MUD. W. L. T. GRY. & SP. GR. S. S.
 4982) 50 FT. MUD. W. L. T. GRY. & SP. GR. S. S.
 4983) 50 FT. MUD. W. L. T. GRY. & SP. GR. S. S.
 4984) 50 FT. MUD. W. L. T. GRY. & SP. GR. S. S.
 4985) 50 FT. MUD. W. L. T. GRY. & SP. GR. S. S.
 4986) 50 FT. MUD. W. L. T. GRY. & SP. GR. S. S.
 4987) 50 FT. MUD. W. L. T. GRY. & SP. GR. S. S.
 4988) 50 FT. MUD. W. L. T. GRY. & SP. GR. S. S.
 4989) 50 FT. MUD. W. L. T. GRY. & SP. GR. S. S.
 4990) 50 FT. MUD. W. L. T. GRY. & SP. GR. S. S.
 4991) 50 FT. MUD. W. L. T. GRY. & SP. GR. S. S.
 4992) 50 FT. MUD. W. L. T. GRY. & SP. GR. S. S.
 4993) 50 FT. MUD. W. L. T. GRY. & SP. GR. S. S.
 4994) 50 FT. MUD. W. L. T. GRY. & SP. GR. S. S.
 4995) 50 FT. MUD. W. L. T. GRY. & SP. GR. S. S.
 4996) 50 FT. MUD. W. L. T. GRY. & SP. GR. S. S.
 4997) 50 FT. MUD. W. L. T. GRY. & SP. GR. S. S.
 4998) 50 FT. MUD. W. L. T. GRY. & SP. GR. S. S.
 4999) 50 FT. MUD. W. L. T. GRY. & SP. GR. S. S.
 5000) 50 FT. MUD. W. L. T. GRY. & SP. GR. S. S.

REC: 50' MUDDY WATER IN TR
 OIL & 125' MUDDY WATER
 (77.000 CUBIC FT)
 151P/1687# F51P/1685#
 16P/28-43# FFP/59-87#
 TEMP: 128.0 F.