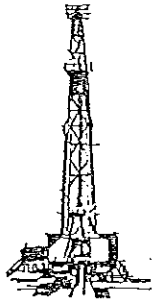




ROBERT E. MOSER, R.L.S.

Oil Field Surveying

335 N. Mission Road • Wichita, Kansas 67206
(316) 683-2853



KM206121

INVOICE NO.

VESS OIL CORPORATION

OPERATOR

hhh

NO.

Wilson "A"

FARM

Butler (KS) 9 25s 05e
COUNTY S T R

2176' FNL - 2310' FNL

LOCATION

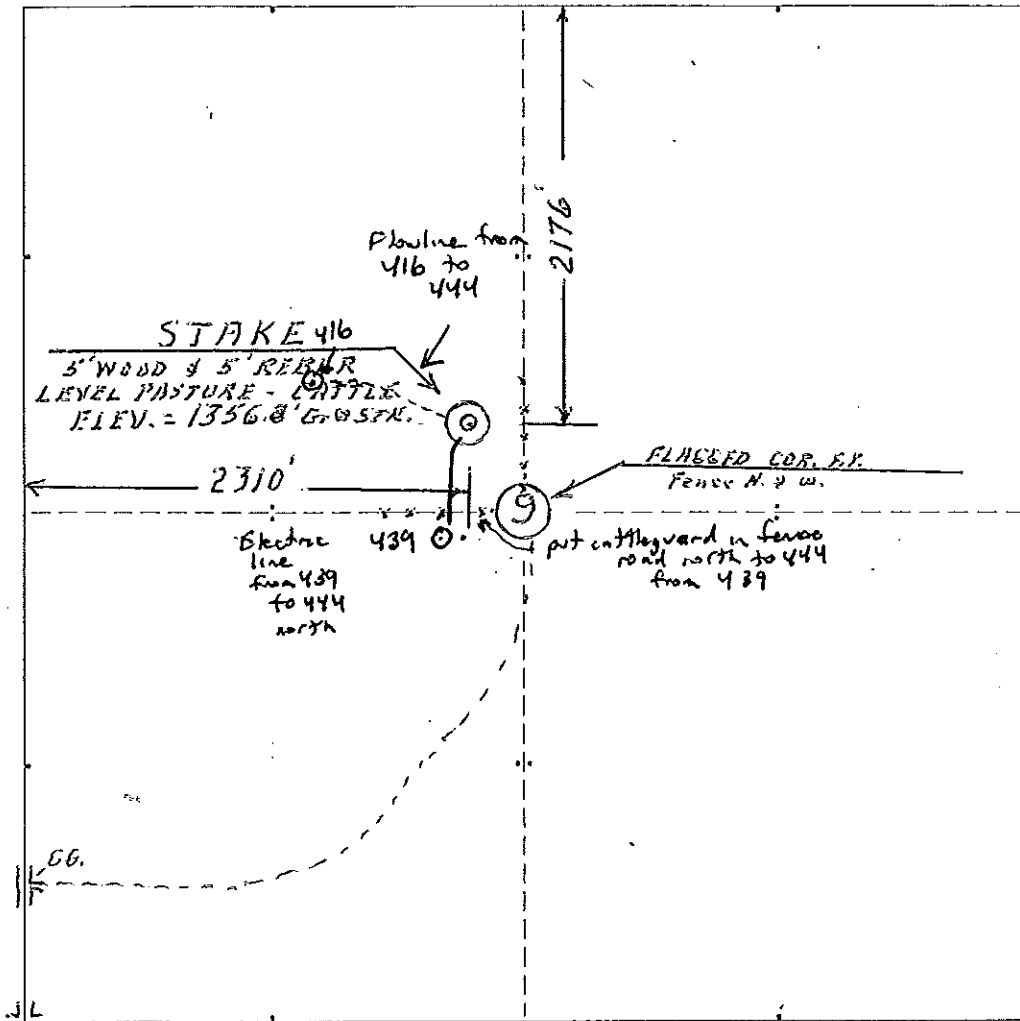
ELEVATION: 1356.8' gr. @ stk.

Vess Oil Corporation
8100 East 22nd St. "N"
Wichita, KS 67226

Mr. C. Coats

AUTHORIZED BY:

SCALE: 1" = 1000'



Mr. Steve Darwin Present @ staking

Date: 5 February 2012

R. E. Moser

Surveyor: R. E. Moser, R.L.S. #329 KS