



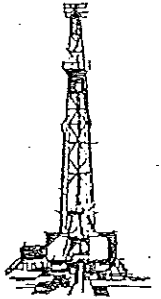
# ROBERT E. MOSER, R.L.S.

Oil Field Surveying

335 N. Mission Road • Wichita, Kansas 67206

(316) 683-2853

2  
KM 05121  
INVOICE NO.



VESS OIL CORPORATION  
OPERATOR

A-47  
NO.

J.W. Smith  
FARM

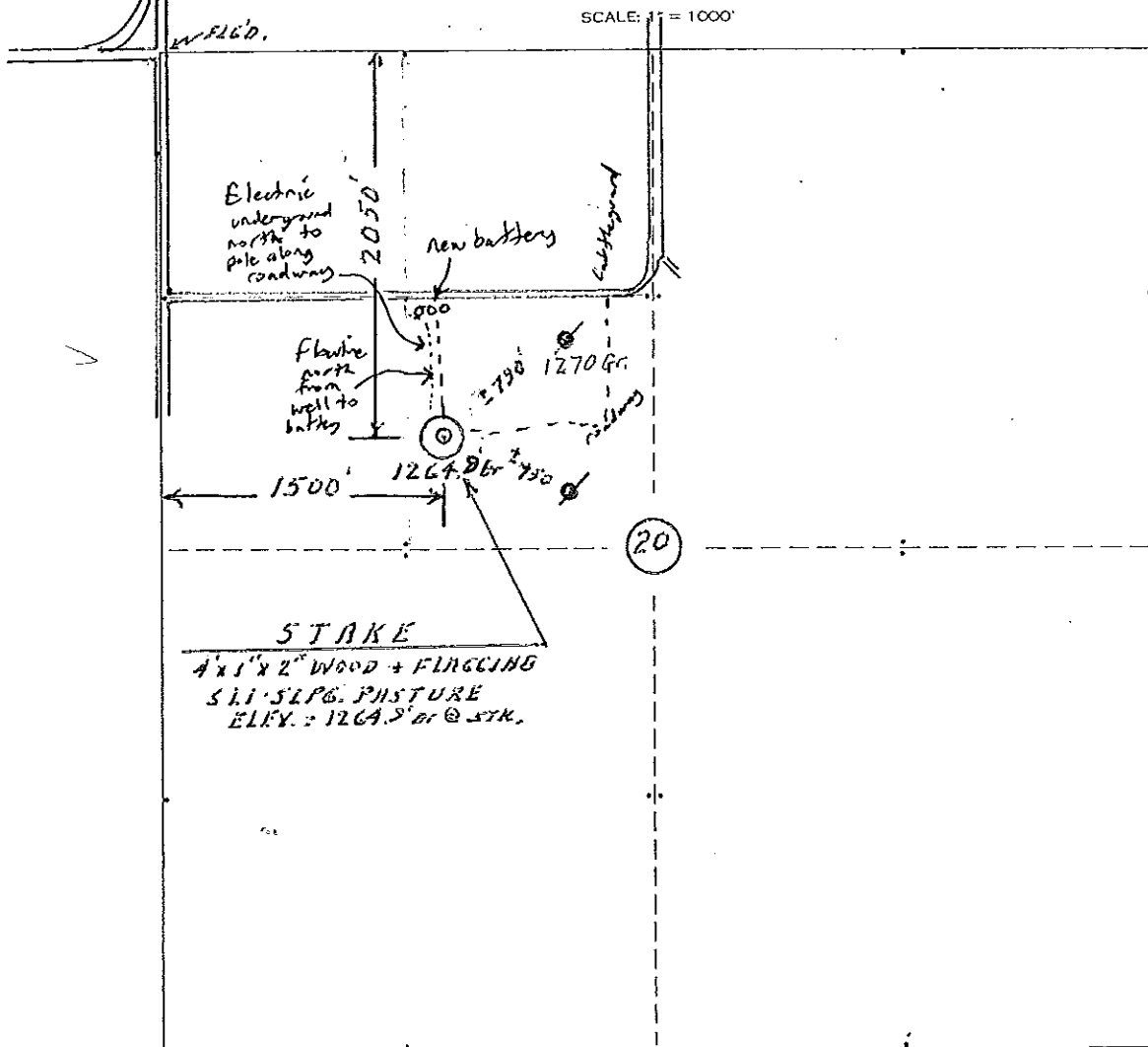
Butler (KS) 20 28s 04e  
COUNTY S T R

2050' FNL - 1500' FWL  
LOCATION

ELEVATION: 1264.9' gr. @ stk.

Vess Oil Corporation  
8100 East 22nd St. "N"  
Wichita, KS 67226

AUTHORIZED BY: Mr. C. Coats (delivered to R.E.M. 1/27/12).



Date: 6 February 2012

Surveyor: R.E. Moser - R.L.S. #329 KS