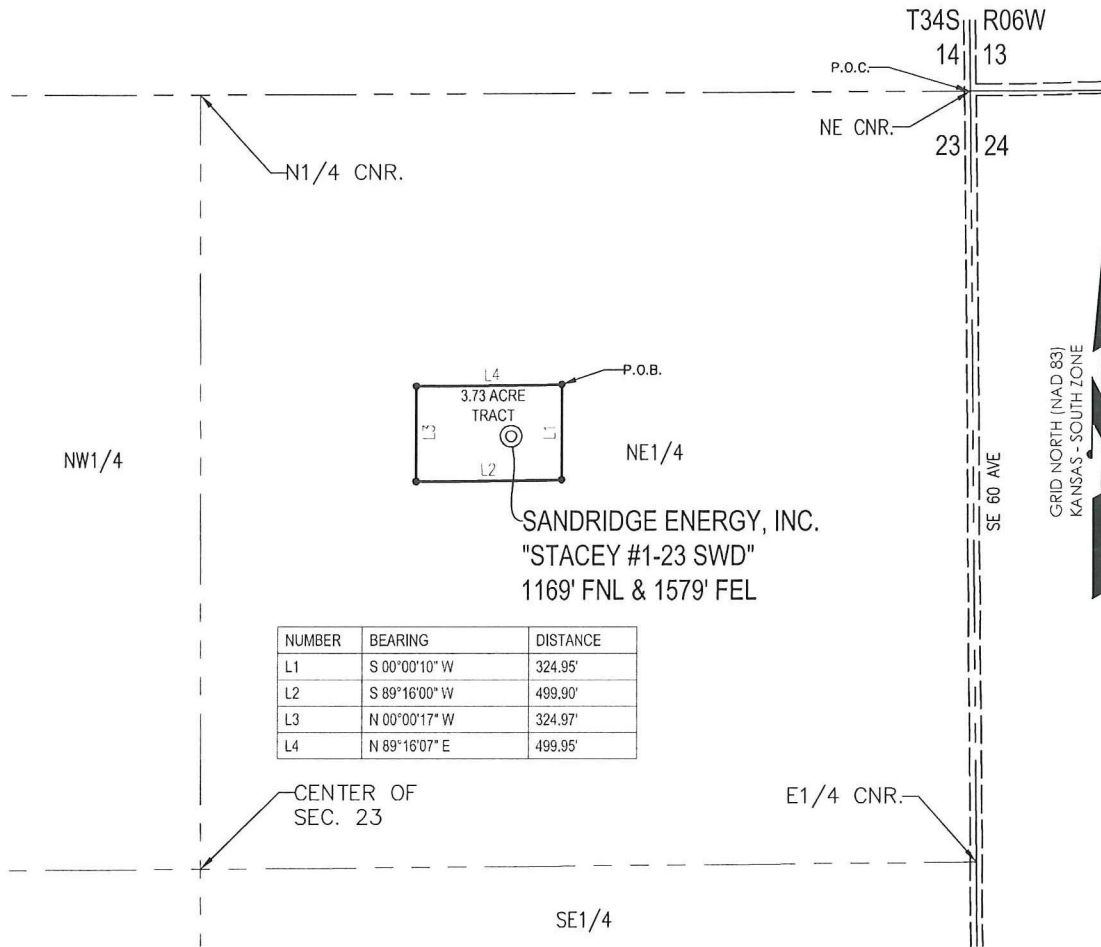




T 34 S - R 06 W



| NUMBER | BEARING | DISTANCE |
|--------|---------------|----------|
| L1 | S 00°00'10" W | 324.95' |
| L2 | S 89°16'00" W | 499.90' |
| L3 | N 00°00'17" W | 324.97' |
| L4 | N 89°16'07" E | 499.95' |

PLAT SHOWING
**3.73 ACRE TRACT OF LAND IN THE
 NE 1/4 OF SECTION 23, T34S-R06W,
 HARPER COUNTY, KANSAS**

METES AND BOUNDS DESCRIPTION (3.73 ACRE TRACT)

PART OF THE NE 1/4 OF SECTION 23, TOWNSHIP 34 SOUTH, RANGE 06 WEST, HARPER COUNTY, KANSAS, MORE PARTICULARLY DESCRIBED AS FOLLOWS:

COMMENCING AT THE NE CORNER OF SAID SECTION 23;
 THENCE S 89°44'10" W ALONG THE NORTH LINE OF SAID SECTION 23, A DISTANCE OF 1397.44 FEET;
 THENCE S 00°15'50" E, A DISTANCE OF 993.06 FEET TO THE POINT OF BEGINNING;
 THENCE S 00°00'10" W, A DISTANCE OF 324.95 FEET;
 THENCE S 89°16'00" W, A DISTANCE OF 499.90 FEET;
 THENCE N 00°00'17" W, A DISTANCE OF 324.97 FEET;
 THENCE N 89°16'07" E, A DISTANCE OF 499.95 FEET TO THE POINT OF BEGINNING.

SAID TRACT CONTAINING 3.73 ACRES OF LAND AS SURVEYED.

SURVEYOR'S CERTIFICATE:

I, C. ED GRAY, KANSAS LICENSED PROFESSIONAL LAND SURVEYOR, NO. 1404, DO HEREBY CERTIFY THAT THIS PLAT REPRESENTS THE RESULTS OF A SURVEY MADE ON THE GROUND UNDER MY SUPERVISION.

9/29/2011

GENERAL NOTES:

THE TIES AND FOOTAGES SHOWN ON THIS PLAT ARE FROM LINES OF OCCUPATION FROM A SURVEY MADE ON THE GROUND AND / OR BEARING AND DISTANCES FROM THE GENERAL LAND OFFICE PLAT OF THE AREA SHOWN AND MAY NOT BE THE ACTUAL PROPERTY CORNERS. THIS PLAT DOES NOT REPRESENT A TRUE BOUNDARY SURVEY.



| REVISION | SandRidge | | |
|----------|---|-------------------|-------------------|
| | "STACEY # 1-23 SWD" PART OF THE NE 1/4 OF SECTION 23, T-34-S, R-06-W PROPOSED DRILL SITE HARPER COUNTY, KANSAS | | |
| | SCALE: 1" = 500' | DRAWN BY: S.ANDER | SHEET NO.: 1 OF 1 |
| | PLOT DATE: 09-29-2011 | | |