

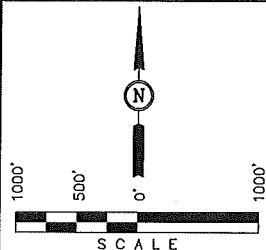
T35S, R9W, 6th P.M.

SGOMI

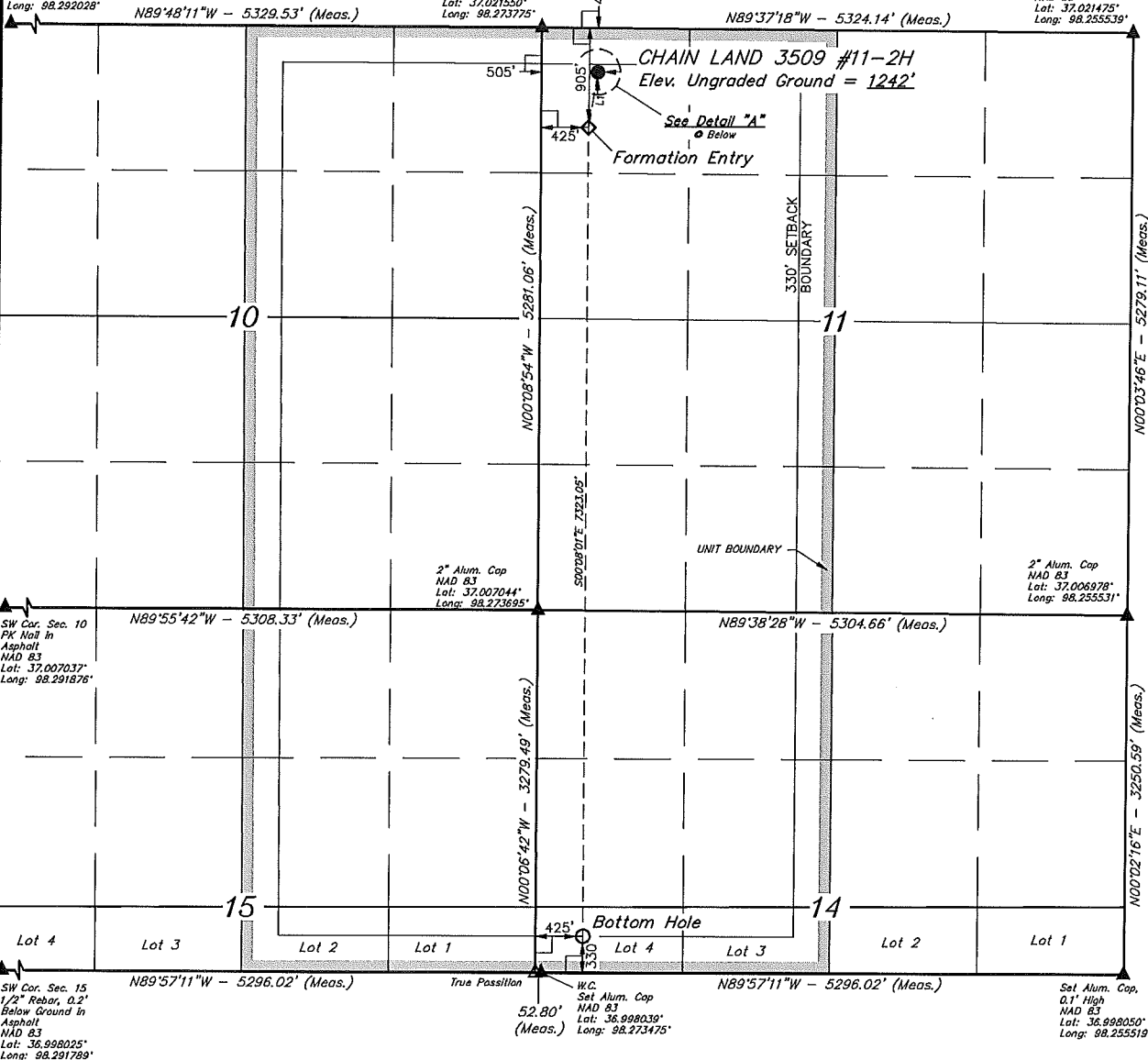
Well location, CHAIN LAND 3509 #11-2H, located as shown in the NW 1/4 NW 1/4 of Section 11, T35S, R9W, 6th P.M., Harper County, Kansas.

BASIS OF ELEVATION

SPOT ELEVATION LOCATED AT THE NORTHEAST CORNER OF SECTION 22, T33S, R7W, 6th P.M. TAKEN FROM THE ANTHONY, QUADRANGLE, KANSAS, HARPER COUNTY, 7.5 MINUTE QUAD (TOPOGRAPHIC MAP) PUBLISHED BY THE UNITED STATES DEPARTMENT OF THE INTERIOR, GEOLOGICAL SURVEY. SAID ELEVATION IS MARKED AS BEING 1348 FEET.



NW Cor. Sec. 10
PK Nail in
Asphalt
NAD 83
Lot: 37,021572"
Long: 98,292028"



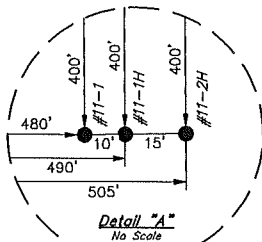
| LINE TABLE | | |
|------------|-------------|---------|
| LINE | BEARING | LENGTH |
| L1 | S08°11'35"W | 510.53' |

BASIS OF BEARINGS

BASIS OF BEARINGS IS A G.P.S. OBSERVATION.

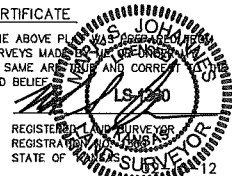
LEGEND:

- └ = 90° SYMBOL
- = PROPOSED WELL HEAD.
- ▲ = SECTION CORNERS LOCATED.
- △ = SECTION CORNERS RE-ESTABLISHED. (Not Set on Ground.)



CERTIFICATE

THIS IS TO CERTIFY THAT THE ABOVE PLAT IS A TRUE AND CORRECT COPY OF THE ORIGINAL SURVEY PLAT AND THAT THE SAME ARE TRUE AND CORRECT IN ACCORDANCE WITH THE BEST OF MY KNOWLEDGE AND BELIEF.



REVISED: 02-14-12

| | | |
|---|----------------------------|-------------------------|
| UINTAH ENGINEERING & LAND SURVEYING 85 SOUTH 200 EAST - VERNAL, UTAH 84078 (435) 788-1017 | | |
| SCALE 1" = 1000' | DATE SURVEYED: 01-08-12 | DATE DRAWN: 01-19-12 |
| PARTY L.S. D.S. C.C. | REFERENCES G.L.O. PLAT | FILE SGOMI |
| WEATHER COLD | | |

| NAD 83 (#11-2H TARGET BOTTOM HOLE) | NAD 83 (#11-2H FORMATION ENTRY) | NAD 83 (#11-2H SURFACE LOCATION) |
|--------------------------------------|--------------------------------------|--------------------------------------|
| LATITUDE = 36°59'56.20" (36.998944) | LATITUDE = 37°01'08.61" (37.019058) | LATITUDE = 37°01'13.60" (37.020444) |
| LONGITUDE = 98°16'19.94" (98.272206) | LONGITUDE = 98°16'20.30" (98.272306) | LONGITUDE = 98°16'19.34" (98.272039) |
| NAD 27 (#11-2H TARGET BOTTOM HOLE) | NAD 27 (#11-2H FORMATION ENTRY) | NAD 27 (#11-2H SURFACE LOCATION) |
| LATITUDE = 36°59'56.11" (36.998919) | LATITUDE = 37°01'08.52" (37.019033) | LATITUDE = 37°01'13.50" (37.020417) |
| LONGITUDE = 98°16'19.69" (98.271856) | LONGITUDE = 98°16'19.05" (98.271956) | LONGITUDE = 98°16'18.09" (98.271692) |