



**TRILOBITE  
TESTING, INC.**

# DRILL STEM TEST REPORT

Daystar Petroleum, Inc.

**19/7S/12E-Pottawatomie**

P.O. Box 560  
Eureka, KS 67045

**Pfrang #1-19**

Job Ticket: 44207

**DST#: 1**

ATTN: Matt Osborn

Test Start: 2011.11.10 @ 14:09:30

## GENERAL INFORMATION:

Formation: **Viola**

Deviated: No Whipstock: ft (KB)

Time Tool Opened: 17:09:00

Time Test Ended: 23:23:00

Test Type: Conventional Bottom Hole (Initial)

Tester: Dustin Rash

Unit No: 38

**Interval: 3125.00 ft (KB) To 3135.00 ft (KB) (TVD)**

Reference Elevations: 1304.00 ft (KB)

Total Depth: 3135.00 ft (KB) (TVD)

1294.00 ft (CF)

Hole Diameter: 7.88 inches Hole Condition: Fair

KB to GR/CF: 10.00 ft

**Serial #: 8354**

**Inside**

Press @ Run Depth: 34.40 psig @ 3127.00 ft (KB)

Capacity: 8000.00 psig

Start Date: 2011.11.10

End Date:

2011.11.10

Last Calib.:

2011.11.10

Start Time: 14:19:30

End Time:

23:23:00

Time On Btm:

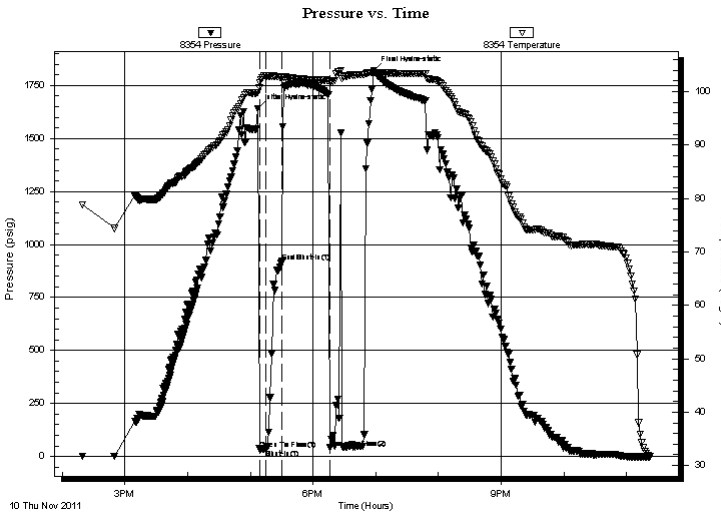
2011.11.10 @ 17:07:00

Time Off Btm:

2011.11.10 @ 18:58:00

**TEST COMMENT:** IF-Weak blow . Built to 1 inch. Died off to 1/4 inch.  
ISI-No Return.  
FF-No Blow . Flushed tool. Few bubbles. No Blow .  
FSI-No Return.

## PRESSURE SUMMARY



Time (Min.)	Pressure (psig)	Temp (deg F)	Annotation
0	1640.38	99.78	Initial Hydro-static
2	31.98	101.65	Open To Flow (1)
8	34.40	102.96	Shut-In(1)
24	919.81	102.64	End Shut-In(1)
69	40.82	101.82	Open To Flow (2)
111	1821.31	103.59	Final Hydro-static

## Recovery

Length (ft)	Description	Volume (bbl)
35.00	100%Mud	0.17

## Gas Rates

Choke (inches)	Pressure (psig)	Gas Rate (Mcf/d)



**TRILOBITE  
TESTING, INC.**

# DRILL STEM TEST REPORT

**FLUID SUMMARY**

Daystar Petroleum, Inc.

**19/7S/12E-Pottawatomie**

P.O. Box 560  
Eureka, KS 67045

**Pfrang #1-19**

Job Ticket: 44207

**DST#: 1**

ATTN: Matt Osborn

Test Start: 2011.11.10 @ 14:09:30

## Mud and Cushion Information

Mud Type: Gel Chem

Cushion Type:

Oil API:

deg API

Mud Weight: 9.00 lb/gal

Cushion Length:

ft

Water Salinity:

ppm

Viscosity: 58.00 sec/qt

Cushion Volume:

bbbl

Water Loss: 8.17 in<sup>3</sup>

Gas Cushion Type:

Resistivity: ohm.m

Gas Cushion Pressure:

psig

Salinity: 700.00 ppm

Filter Cake: inches

## Recovery Information

Recovery Table

Length ft	Description	Volume bbbl
35.00	100%Mud	0.172

Total Length: 35.00 ft      Total Volume: 0.172 bbl

Num Fluid Samples: 0

Num Gas Bombs: 0

Serial #:

Laboratory Name:

Laboratory Location:

Recovery Comments:

