

TRILOBITE
TESTING, INC.

DRILL STEM TEST REPORT

Prepared For: **N-10 Exploration LLC**

PO Box 195
Attica KS 67009

ATTN: Randy Newberry/Tim P

10-34s-11w Barber,KS

Medicine River Ranch D-3

Start Date: 2011.11.23 @ 07:46:42

End Date: 2011.11.23 @ 14:29:27

Job Ticket #: 44108 DST #: 2

Trilobite Testing, Inc

PO Box 362 Hays, KS 67601

ph: 785-625-4778 fax: 785-625-5620

Printed: 2011.12.01 @ 13:57:01



TRILOBITE
TESTING, INC

DRILL STEM TEST REPORT

N-10 Exploration LLC

Medicine River Ranch D-3

PO Box 195

10-34s-11w Barber, KS

Atfca KS 67009

Job Ticket: 44108

DST#: 2

ATTN: Randy Newberry/Timp

Test Start: 2011.11.23 @ 07:46:42

GENERAL INFORMATION:

Formation: **Misener** No Whipstock: ft (KB)
Deviated: No Time Tool Opened: 10:06:27
Time Test Ended: 14:29:27 Time Test Ended: 14:29:27
Interval: **4873.00 ft (KB) To 4900.00 ft (KB) (TVD)**
Total Depth: **4900.00 ft (KB) (TVD)**
Hole Diameter: **7.88 inches**Hole Condition: Fair

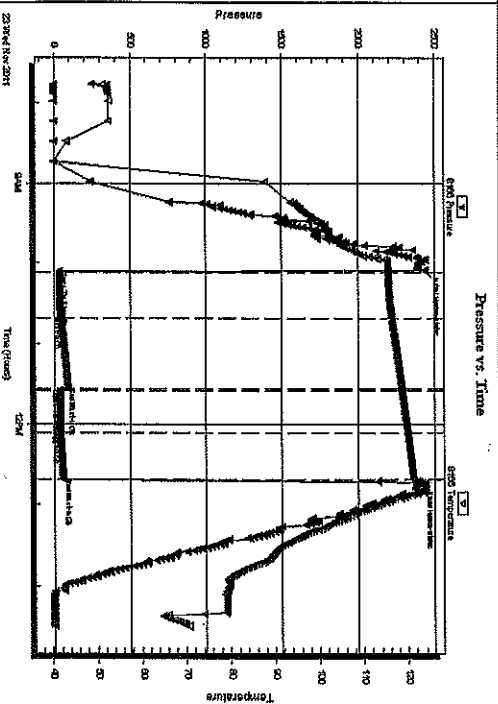
Test Type: Conventional Bottom Hole (Reset)
Tester: Chris Staats
Unit No: 34
Reference Elevations: 1380.00 ft (KB)
1370.00 ft (CF)
10.00 ft

Serial #: 8166 **Outside**
Press@RunDepth: 37.99 psig @ 4874.00 ft (KB)
Start Date: 2011.11.23 End Date: 2011.11.23
Start Time: 07:46:47 End Time: 14:29:26

Capacity: 8000.00 psig
Last Callb.: 2011.11.23
Time On Birt: 2011.11.23 @ 10:05:12
Time Off Birt: 2011.11.23 @ 12:44:27

TEST COMMENT: IF: Weak blow 1 1/2" Blow died

IS: No blow back
FE: No blow
FSI: No blow back



PRESSURE SUMMARY

Time (Min.)	Pressure (psig)	Temp (deg F)	Annotation
0	2436.11	115.50	Initial Hydro-static
2	34.00	115.48	Open To Flow (1)
36	43.62	116.23	Shut-In(1)
89	87.92	118.48	End Shut-In(1)
90	34.03	118.52	Open To Flow (2)
121	37.99	119.81	Shut-In(2)
156	58.37	121.14	End Shut-In(2)
160	2389.32	123.86	Final Hydro-static

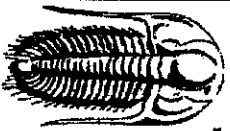
Recovery

Length (ft)	Description	Volume (bbl)
30.00	mud	0.15

Gas Rates

Choke (inches)	Pressure (psig)	Gas Rate (Mcf/d)

* Recovery from multiple tests



TRILOBITE
TESTING, INC

DRILL STEM TEST REPORT

TOOL DIAGRAM

N-10 Exploration LLC

Medicine River Ranch D-3

PO Box 195
Attica KS 67009

10-34s-11w Barber, KS

Job Ticket: 44108

DST#: 2

ATTN: Randy Newberry/Tim P

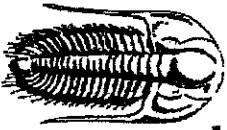
Test Start: 2011.11.23 @ 07:46:42

Tool Information

Drill Pipe:	Length: 4761.00 ft	Diameter: 3.80 inches	Volume: 66.78 bbl	Tool Weight: 2000.00 lb
Heavy Wt. Pipe:	Length: 0.00 ft	Diameter: 0.00 inches	Volume: 0.00 bbl	Weight set on Packer: 25000.00 lb
Drill Collar:	Length: 118.00 ft	Diameter: 2.25 inches	Volume: 0.58 bbl	Weight to Pull Loose: 90000.00 lb
			<u>Total Volume:</u> 67.36 bbl	Tool Chased 6.00 ft
Drill Pipe Above KB:	27.00 ft			String Weight: Initial 74000.00 lb
Depth to Top Packer:	4873.00 ft			Final 74000.00 lb
Depth to Bottom Packer:	ft			
Interval betw seen Packers:	27.00 ft			
Tool Length:	48.00 ft			
Number of Packers:	2	Diameter: 6.75 inches		

Tool Comments:

Tool Description	Length (ft)	Serial No.	Position	Depth (ft)	Accum. Lengths
Change Over Sub	1.00			4853.00	
Shut In Tool	5.00			4858.00	
Hydraulic tool	5.00			4863.00	
Packer	5.00			4868.00	21.00 Bottom Of Top Packer
Packer	5.00			4873.00	
Stubb	1.00			4874.00	
Recorder	0.00	6773	Outside	4874.00	
Recorder	0.00	8166	Outside	4874.00	
Perforations	23.00			4897.00	
Bullnose	3.00			4900.00	27.00 Bottom Packers & Anchor
Total Tool Length:	48.00				



TRILOBITE
TESTING, INC

DRILL STEM TEST REPORT

FLUID SUMMARY

N-10 Exploration LLC

Medicine River Ranch D-3

PO Box 195

10-34s-11w Barber, KS

Attica KS 67009

Job Ticket: 44108

DST#: 2

ATTN: Randy Newberry/Tim P

Test Start: 2011.11.23 @ 07:46:42

Mud and Cushion Information

Mud Type: Gel Chem
 Mud Weight: 10.00 lb/gal
 Viscosity: 44.00 sec/qt
 Water Loss: 9.18 in³
 Resistivity: 0.00 ohmm
 Salinity: 5000.00 ppm
 Filter Cake: 0.02 inches

Cushion Type:
 Cushion Length: ft
 Cushion Volume: bbl
 Gas Cushion Type:
 Gas Cushion Pressure: psig

Oil API: deg API
 Water Salinity: ppm

Recovery Information

Recovery Table

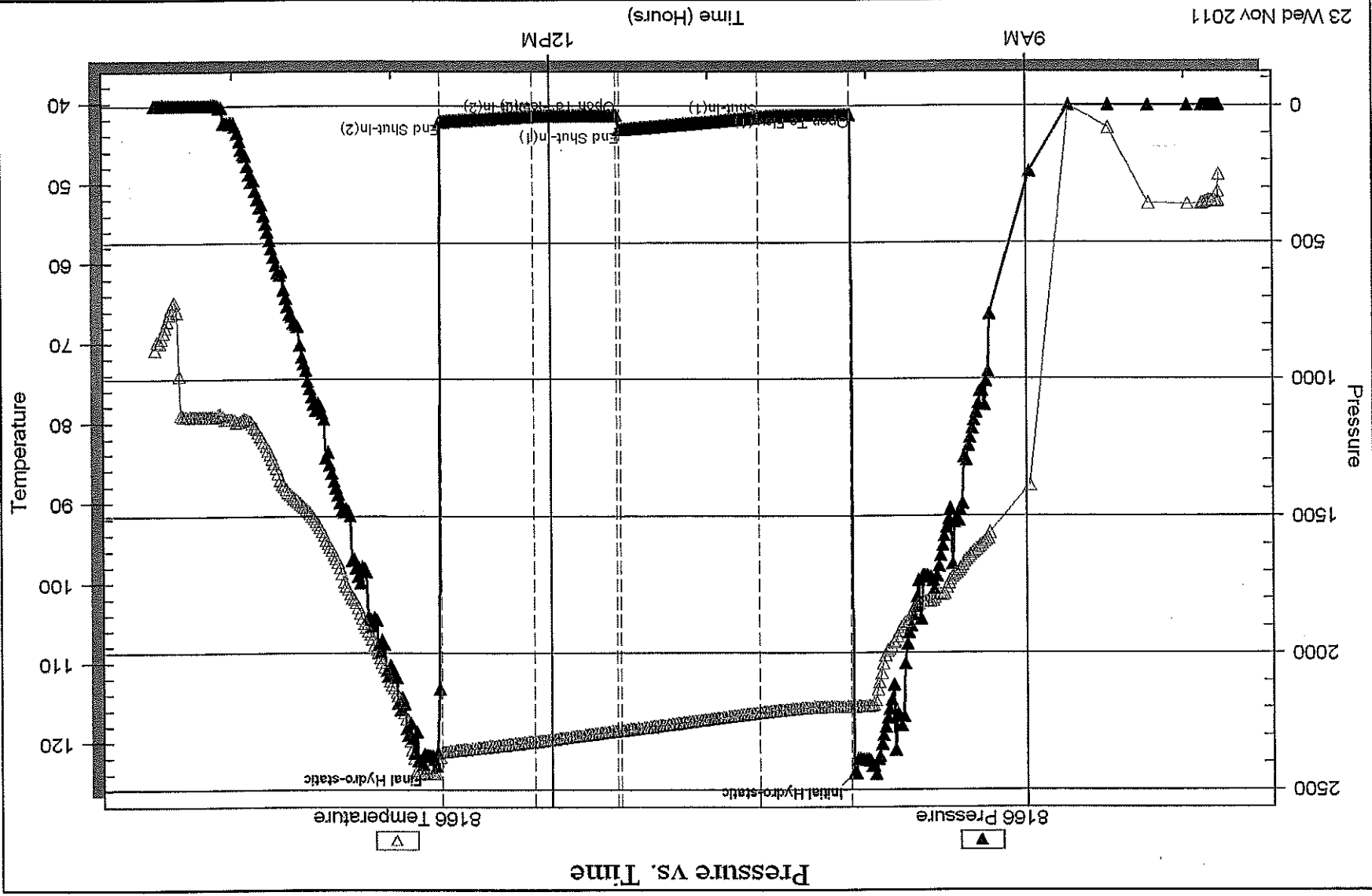
Length ft	Description	Volume bbl
30.00	mud	0.148

Total Length: 30.00 ft Total Volume: 0.148 bbl

Num Fluid Samples: 0 Num Gas Borbs: 0 Serial#:

Laboratory Name: Laboratory Location:

Recovery Comments:



Pressure vs. Time

Final Hydro-static

Initial Hydro-static

End Shut-In(2)

End Shut-In(1)

Open To Flow(1)

Open To Flow(2)