



DRILL STEM TEST REPORT

Prepared For: **L B Exploration Inc.**

2135 2nd Road Holyrood
Kansas 67450+9021

ATTN: Scott Alberg

14/32S/15W Barber

Lakin # 14

Start Date: 2011.04.06 @ 12:14:00

End Date: 2011.04.06 @ 21:35:00

Job Ticket #: 15983 DST #: 1

Superior Testers Enterprises LLC
PO Box 138 Great Bend KS 67530
1-800-792-6902

Printed: 2011.04.06 @ 10:07:03



DRILL STEM TEST REPORT

L B Exploration Inc.
 2135 2nd Road Holyrood
 Kansas 67450+9021
 ATTN: Scott Alberg

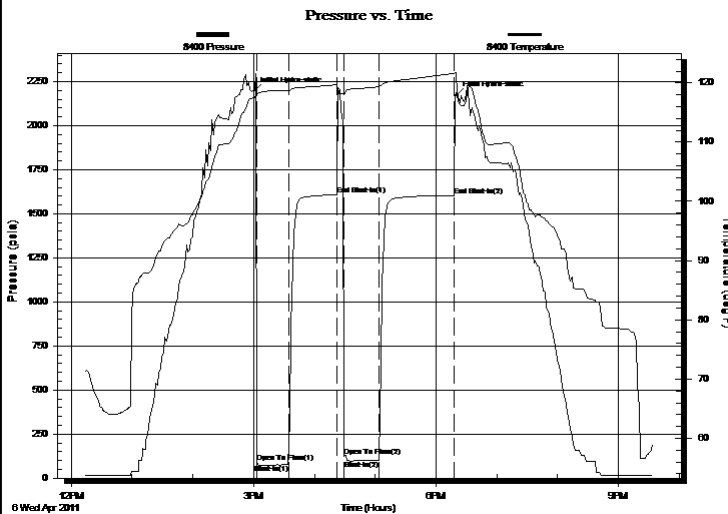
Lakin # 14
14/32S/15W Barber
 Job Ticket: 15983 **DST#: 1**
 Test Start: 2011.04.06 @ 12:14:00

GENERAL INFORMATION:

Formation: **Dennis**
 Deviated: No Whipstock: ft (KB)
 Test Type: Conventional Bottom Hole (Initial)
 Time Tool Opened: 15:03:30 Tester: Dylan E Ellis
 Time Test Ended: 21:35:00 Unit No: 3345/Pratt/124
 Interval: **4530.00 ft (KB) To 4555.00 ft (KB) (TVD)** Reference Elevations: 1979.00 ft (KB)
 Total Depth: 4555.00 ft (KB) (TVD) 1971.00 ft (CF)
 Hole Diameter: 7.88 inches Hole Condition: Fair KB to GR/CF: 8.00 ft

Serial #: 8400 Outside
 Press @ Run Depth: 99.55 psia @ 4552.00 ft (KB) Capacity: 5000.00 psia
 Start Date: 2011.04.06 End Date: 2011.04.06 Last Calib.: 2011.04.06
 Start Time: 12:14:00 End Time: 21:35:00 Time On Btm: 2011.04.06 @ 15:00:30
 Time Off Btm: 2011.04.06 @ 18:19:30

TEST COMMENT: 1ST Opening 30 Minutes very strong blow/blew bottom of bucket instantly/gas to surface in 8 minutes
 1ST Shut-In 45 Minutes yes blow back
 2ND Opening 45 Minutes very strong blow/blew bottom of bucket instantly/gauged gas
 2ND Shut-In 60 Minutes yes blow back



PRESSURE SUMMARY			
Time (Min.)	Pressure (psia)	Temp (deg F)	Annotation
0	2194.16	117.44	Initial Hydro-static
3	89.87	117.91	Open To Flow (1)
34	78.37	118.66	Shut-In(1)
82	1606.94	119.71	End Shut-In(1)
89	126.17	118.01	Open To Flow (2)
124	99.55	119.34	Shut-In(2)
198	1604.22	121.61	End Shut-In(2)
199	2168.72	121.78	Final Hydro-static

Recovery		
Length (ft)	Description	Volume (bbl)
150.00	Slightly Gassy cut Mud	0.74
0.00	5% Gas 95% Mud	0.00

Gas Rates			
	Choke (inches)	Pressure (psia)	Gas Rate (Mcf/d)
First Gas Rate	1.00	4.60	132.25
Last Gas Rate	1.00	4.92	141.44
Max. Gas Rate	1.00	4.92	141.44



DRILL STEM TEST REPORT

L B Exploration Inc.
 2135 2nd Road Holyrood
 Kansas 67450+9021
 ATTN: Scott Alberg

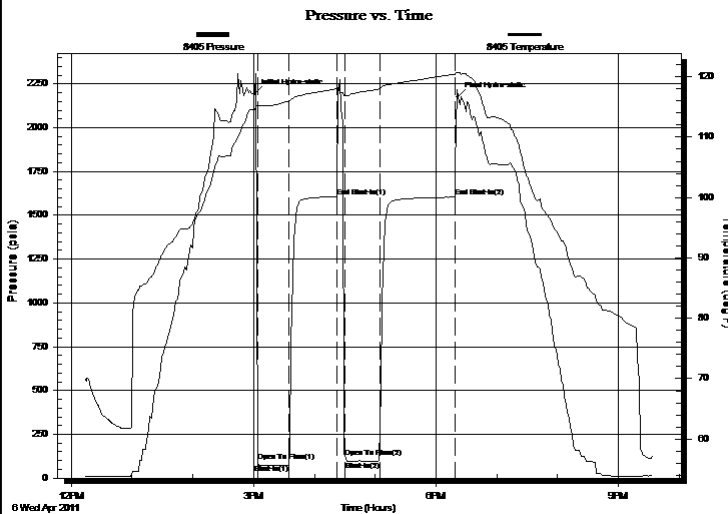
Lakin # 14
14/32S/15W Barber
 Job Ticket: 15983 **DST#: 1**
 Test Start: 2011.04.06 @ 12:14:00

GENERAL INFORMATION:

Formation: **Dennis**
 Deviated: No Whipstock: ft (KB)
 Test Type: Conventional Bottom Hole (Initial)
 Time Tool Opened: 15:03:30 Tester: Dylan E Ellis
 Time Test Ended: 21:35:00 Unit No: 3345/Pratt/124
 Interval: **4530.00 ft (KB) To 4555.00 ft (KB) (TVD)** Reference Elevations: 1979.00 ft (KB)
 Total Depth: 4555.00 ft (KB) (TVD) 1971.00 ft (CF)
 Hole Diameter: 7.88 inches Hole Condition: Fair KB to GR/CF: 8.00 ft

Serial #: 8405 Inside
 Press @ Run Depth: 1603.51 psia @ 4551.00 ft (KB) Capacity: 5000.00 psia
 Start Date: 2011.04.06 End Date: 2011.04.06 Last Calib.: 2011.04.06
 Start Time: 12:14:00 End Time: 21:35:00 Time On Btm: 2011.04.06 @ 15:01:30
 Time Off Btm: 2011.04.06 @ 18:21:30

TEST COMMENT: 1ST Opening 30 Minutes very strong blow/blew bottom of bucket instantly/gas to surface in 8 minutes
 1ST Shut-In 45 Minutes yes blow back
 2ND Opening 45 Minutes very strong blow/blew bottom of bucket instantly/gauged gas
 2ND Shut-In 60 Minutes yes blow back



PRESSURE SUMMARY

Time (Min.)	Pressure (psia)	Temp (deg F)	Annotation
0	2193.96	114.56	Initial Hydro-static
3	95.27	115.19	Open To Flow (1)
33	77.48	115.93	Shut-In(1)
81	1606.32	118.01	End Shut-In(1)
89	121.48	116.84	Open To Flow (2)
123	98.44	118.00	Shut-In(2)
197	1603.51	120.43	End Shut-In(2)
200	2176.42	120.61	Final Hydro-static

Recovery

Length (ft)	Description	Volume (bbl)
150.00	Slightly Gassy cut Mud	0.74
0.00	5% Gas 95% Mud	0.00

Gas Rates

	Choke (inches)	Pressure (psia)	Gas Rate (Mcf/d)
First Gas Rate	1.00	4.60	132.25
Last Gas Rate	1.00	4.92	141.44
Max. Gas Rate	1.00	4.92	141.44



DRILL STEM TEST REPORT

TOOL DIAGRAM

L B Exploration Inc.
 2135 2nd Road Holyrood
 Kansas 67450+9021
 ATTN: Scott Alberg

Lakin # 14
14/32S/15W Barber
 Job Ticket: 15983 **DST#: 1**
 Test Start: 2011.04.06 @ 12:14:00

Tool Information

Drill Pipe:	Length: 4255.00 ft	Diameter: 3.80 inches	Volume: 59.69 bbl	Tool Weight: 2000.00 lb
Heavy Wt. Pipe:	Length: 0.00 ft	Diameter: 0.00 inches	Volume: 0.00 bbl	Weight set on Packer: 20000.00 lb
Drill Collar:	Length: 251.18 ft	Diameter: 2.25 inches	Volume: 1.24 bbl	Weight to Pull Loose: 24000.00 lb
			<u>Total Volume: 60.93 bbl</u>	Tool Chased 0.00 ft
Drill Pipe Above KB:	4.18 ft			String Weight: Initial 64000.00 lb
Depth to Top Packer:	4530.00 ft			Final 64000.00 lb
Depth to Bottom Packer:	ft			
Interval between Packers:	25.00 ft			
Tool Length:	53.00 ft			
Number of Packers:	2	Diameter: 6.75 inches		

Tool Comments:

Tool Description	Length (ft)	Serial No.	Position	Depth (ft)	Accum. Lengths
Shut-In Tool	5.00			4507.00	
Hydraulic Tool	5.00			4512.00	
Jars	6.00			4518.00	
Safety Joint	2.00			4520.00	
Packer	5.00			4525.00	28.00 Bottom Of Top Packer
Packer	5.00			4530.00	
Perforations	20.00			4550.00	
Recorder	1.00	8405	Inside	4551.00	
Recorder	1.00	8400	Outside	4552.00	
Bull Plug	3.00			4555.00	25.00 Bottom Packers & Anchor
Total Tool Length:	53.00				



DRILL STEM TEST REPORT

FLUID SUMMARY

L B Exploration Inc.
2135 2nd Road Holyrood
Kansas 67450+9021
ATTN: Scott Alberg

Lakin # 14
14/32S/15W Barber
Job Ticket: 15983 **DST#: 1**
Test Start: 2011.04.06 @ 12:14:00

Mud and Cushion Information

Mud Type: Gel Chem	Cushion Type:	Oil API:	deg API
Mud Weight: 10.00 lb/gal	Cushion Length: ft	Water Salinity:	ppm
Viscosity: 48.00 sec/qt	Cushion Volume: bbl		
Water Loss: 12.00 in ³	Gas Cushion Type:		
Resistivity: ohm.m	Gas Cushion Pressure: psia		
Salinity: 6600.00 ppm			
Filter Cake: 1.00 inches			

Recovery Information

Recovery Table

Length ft	Description	Volume bbl
150.00	Slightly Gassy cut Mud	0.738
0.00	5% Gas 95% Mud	0.000

Total Length: 150.00 ft Total Volume: 0.738 bbl

Num Fluid Samples: 0 Num Gas Bombs: 0 Serial #:
Laboratory Name: Laboratory Location:

Recovery Comments: On the second open we were well stuck and to pull tool loose and reset it to turn the tool. Tool back spun on us in the table that's way.



DRILL STEM TEST REPORT

GAS RATES

L B Exploration Inc.

Lakin # 14

2135 2nd Road Holyrood
Kansas 67450+9021

14/32S/15W Barber

Job Ticket: 15983

DST#: 1

ATTN: Scott Alberg

Test Start: 2011.04.06 @ 12:14:00

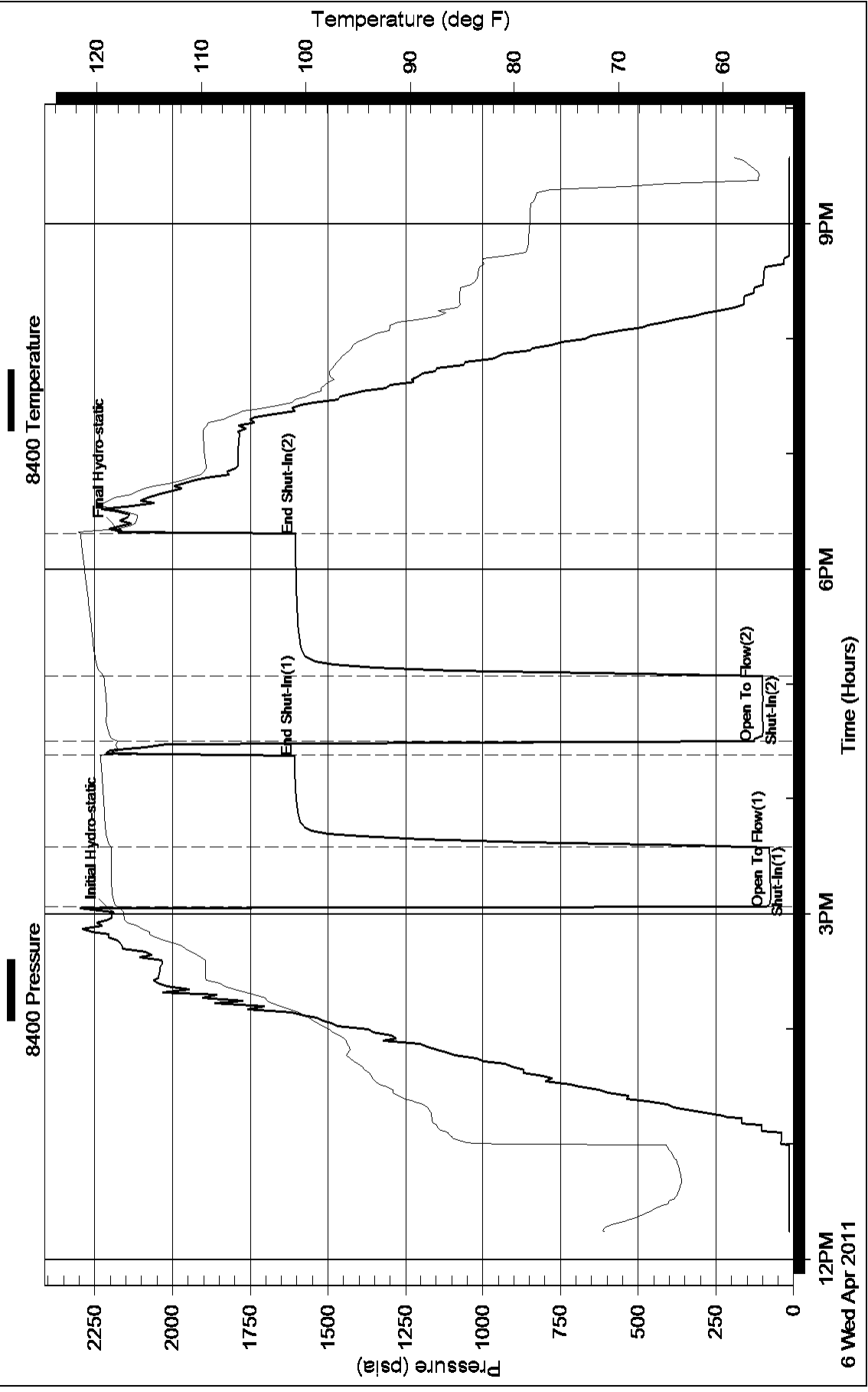
Gas Rates Information

Temperature: 59 (deg F)
Relative Density: 0.65
Z Factor: 0.8

Gas Rates Table

Flow Period	Elapsed Time	Choke (inches)	Pressure (psia)	Gas Rate (Mcf/d)
2	10	1.00	4.60	132.25
2	20	1.00	4.92	141.44
2	30	1.00	4.92	141.44
2	40	1.00	4.92	141.44
2	50	1.00	4.92	141.44

Pressure vs. Time



Pressure vs. Time

