



DRILL STEM TEST REPORT

Prepared For: **L B Exploration Inc.**

2135 2nd Road Holyrood
Kansas 67450+9021

ATTN: Scott Alberg

14/32S/15W Barber

Lakin # 14

Start Date: 2011.04.07 @ 04:08:00

End Date: 2011.04.07 @ 11:46:30

Job Ticket #: 15984 DST #: 2

Superior Testers Enterprises LLC
PO Box 138 Great Bend KS 67530
1-800-792-6902

Printed: 2011.04.07 @ 12:08:47



DRILL STEM TEST REPORT

L B Exploration Inc.
 2135 2nd Road Holyrood
 Kansas 67450+9021
 ATTN: Scott Alberg

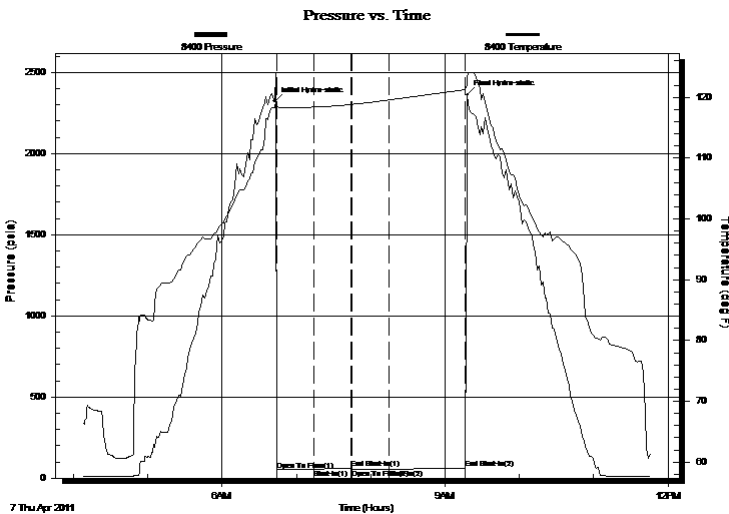
Lakin # 14
14/32S/15W Barber
 Job Ticket: 15984 **DST#: 2**
 Test Start: 2011.04.07 @ 04:08:00

GENERAL INFORMATION:

Formation: **Marmaton**
 Deviated: No Whipstock: ft (KB)
 Test Type: Conventional Bottom Hole (Initial)
 Time Tool Opened: 06:44:30 Tester: Dylan E Ellis
 Time Test Ended: 11:46:30 Unit No: 3345/Pratt/124
 Interval: **4670.00 ft (KB) To 4708.00 ft (KB) (TVD)** Reference Elevations: 1979.00 ft (KB)
 Total Depth: 4708.00 ft (KB) (TVD) 1971.00 ft (CF)
 Hole Diameter: 7.88 inches Hole Condition: Fair KB to GR/CF: 8.00 ft

Serial #: 8400 Outside
 Press @ Run Depth: 54.08 psia @ 4705.00 ft (KB) Capacity: 5000.00 psia
 Start Date: 2011.04.07 End Date: 2011.04.07 Last Calib.: 2011.04.07
 Start Time: 04:08:00 End Time: 11:46:30 Time On Btm: 2011.04.07 @ 06:42:30
 Time Off Btm: 2011.04.07 @ 09:18:00

TEST COMMENT: 1ST Opening 30 Minutes very weak blow/blow built to 0.25 inch into bucket of water
 1ST Shut-In 30 Minutes no blow back
 2ND Opening 30 Minutes blow was dead all through out open
 2ND Shut-In 60 Minutes no blow back



PRESSURE SUMMARY

Time (Min.)	Pressure (psia)	Temp (deg F)	Annotation
0	2321.48	118.27	Initial Hydro-static
2	51.11	118.50	Open To Flow (1)
32	53.87	118.40	Shut-In(1)
62	62.56	118.82	End Shut-In(1)
63	53.79	118.83	Open To Flow (2)
92	54.08	119.55	Shut-In(2)
154	62.42	121.27	End Shut-In(2)
156	2361.82	123.15	Final Hydro-static

Recovery

Length (ft)	Description	Volume (bbl)
5.00	Mud 100%	0.02

Gas Rates

Choke (inches)	Pressure (psia)	Gas Rate (Mcf/d)



DRILL STEM TEST REPORT

L B Exploration Inc.
 2135 2nd Road Holyrood
 Kansas 67450+9021
 ATTN: Scott Alberg

Lakin # 14
14/32S/15W Barber
 Job Ticket: 15984 **DST#: 2**
 Test Start: 2011.04.07 @ 04:08:00

GENERAL INFORMATION:

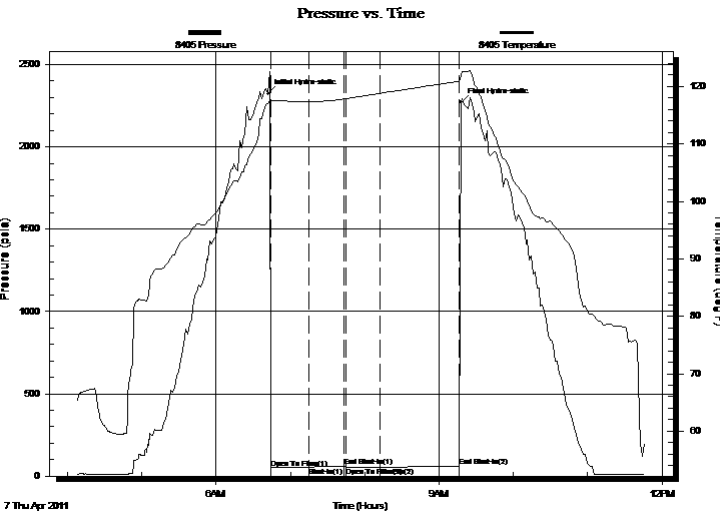
Formation: **Marmaton**
 Deviated: No Whipstock: ft (KB)
 Time Tool Opened: 06:44:30
 Time Test Ended: 11:46:30
 Interval: **4670.00 ft (KB) To 4708.00 ft (KB) (TVD)**
 Total Depth: 4708.00 ft (KB) (TVD)
 Hole Diameter: 7.88 inches Hole Condition: Fair
 Test Type: Conventional Bottom Hole (Initial)
 Tester: Dylan E Ellis
 Unit No: 3345/Pratt/124
 Reference Elevations: 1979.00 ft (KB)
 1971.00 ft (CF)
 KB to GR/CF: 8.00 ft

Serial #: 8405

Inside

Press @ Run Depth: 61.71 psia @ 4704.00 ft (KB) Capacity: 5000.00 psia
 Start Date: 2011.04.07 End Date: 2011.04.07 Last Calib.: 2011.04.07
 Start Time: 04:08:00 End Time: 11:46:00 Time On Btm: 2011.04.07 @ 06:42:00
 Time Off Btm: 2011.04.07 @ 09:17:30

TEST COMMENT: 1ST Opening 30 Minutes very weak blow/blow built to 0.25 inch into bucket of water
 1ST Shut-In 30 Minutes no blow back
 2ND Opening 30 Minutes blow was dead all through out open
 2ND Shut-In 60 Minutes no blow back



PRESSURE SUMMARY

Time (Min.)	Pressure (psia)	Temp (deg F)	Annotation
0	2323.41	116.99	Initial Hydro-static
3	50.44	117.33	Open To Flow (1)
33	54.97	117.30	Shut-In(1)
62	61.80	117.83	End Shut-In(1)
63	54.10	117.87	Open To Flow (2)
91	54.51	118.79	Shut-In(2)
155	61.71	120.89	End Shut-In(2)
156	2270.59	121.89	Final Hydro-static

Recovery

Length (ft)	Description	Volume (bbl)
5.00	Mud 100%	0.02

Gas Rates

Choke (inches)	Pressure (psia)	Gas Rate (Mcf/d)



DRILL STEM TEST REPORT

TOOL DIAGRAM

L B Exploration Inc.
 2135 2nd Road Holyrood
 Kansas 67450+9021
 ATTN: Scott Alberg

Lakin # 14
14/32S/15W Barber
 Job Ticket: 15984 **DST#: 2**
 Test Start: 2011.04.07 @ 04:08:00

Tool Information

Drill Pipe:	Length: 4477.00 ft	Diameter: 3.80 inches	Volume: 62.80 bbl	Tool Weight: 2000.00 lb
Heavy Wt. Pipe:	Length: 0.00 ft	Diameter: 0.00 inches	Volume: 0.00 bbl	Weight set on Packer: 20000.00 lb
Drill Collar:	Length: 189.00 ft	Diameter: 2.25 inches	Volume: 0.93 bbl	Weight to Pull Loose: 26000.00 lb
			<u>Total Volume: 63.73 bbl</u>	Tool Chased 0.00 ft
Drill Pipe Above KB:	24.00 ft			String Weight: Initial 66000.00 lb
Depth to Top Packer:	4670.00 ft			Final 67000.00 lb
Depth to Bottom Packer:	ft			
Interval between Packers:	38.00 ft			
Tool Length:	66.00 ft			
Number of Packers:	2	Diameter: 6.75 inches		

Tool Comments:

Tool Description	Length (ft)	Serial No.	Position	Depth (ft)	Accum. Lengths
Shut-In Tool	5.00			4647.00	
Hydraulic Tool	5.00			4652.00	
Jars	6.00			4658.00	
Safety Joint	2.00			4660.00	
Packer	5.00			4665.00	28.00 Bottom Of Top Packer
Packer	5.00			4670.00	
Perforations	33.00			4703.00	
Recorder	1.00	8405	Inside	4704.00	
Recorder	1.00	8400	Outside	4705.00	
Bull Plug	3.00			4708.00	38.00 Bottom Packers & Anchor
Total Tool Length:	66.00				



DRILL STEM TEST REPORT

FLUID SUMMARY

L B Exploration Inc.

Lakin # 14

2135 2nd Road Holyrood
Kansas 67450+9021

14/32S/15W Barber

Job Ticket: 15984

DST#: 2

ATTN: Scott Alberg

Test Start: 2011.04.07 @ 04:08:00

Mud and Cushion Information

Mud Type: Gel Chem
Mud Weight: 9.00 lb/gal
Viscosity: 66.00 sec/qt
Water Loss: 10.80 in³
Resistivity: ohm.m
Salinity: 7800.00 ppm
Filter Cake: 1.00 inches

Cushion Type:
Cushion Length: ft
Cushion Volume: bbl
Gas Cushion Type:
Gas Cushion Pressure: psia

Oil API: deg API
Water Salinity: ppm

Recovery Information

Recovery Table

Length ft	Description	Volume bbl
5.00	Mud 100%	0.025

Total Length: 5.00 ft Total Volume: 0.025 bbl

Num Fluid Samples: 0

Num Gas Bombs: 0

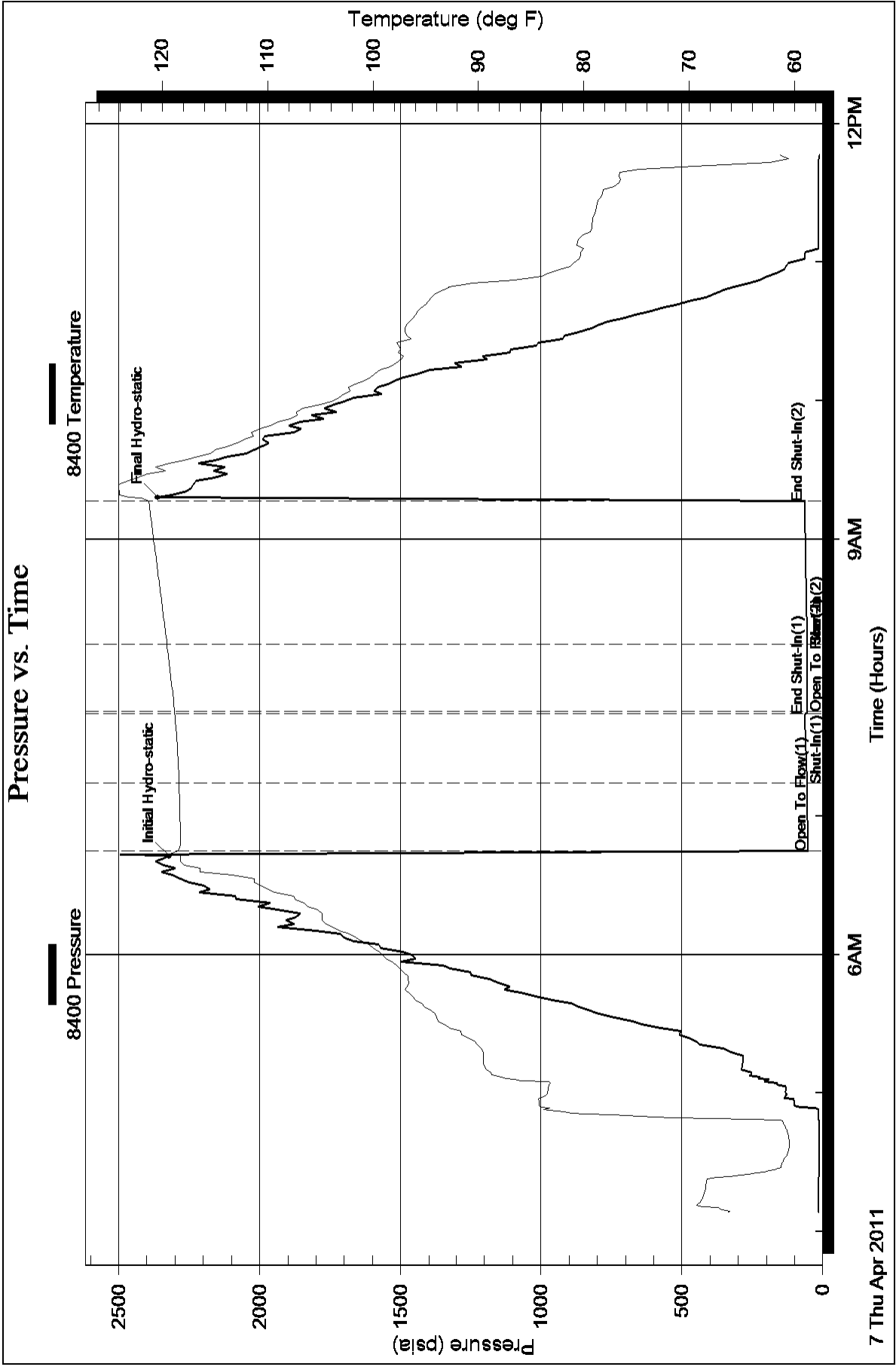
Serial #:

Laboratory Name:

Laboratory Location:

Recovery Comments:

Pressure vs. Time



Pressure vs. Time

