



DRILL STEM TEST REPORT

Prepared For: **L B Exploration Inc.**

2135 2nd Road Holyrood
Kansas 67450+9021

ATTN: Scott Alberg

14/32S/15W Barber

Lakin # 14

Start Date: 2011.04.08 @ 07:06:00

End Date: 2011.04.08 @ 16:15:30

Job Ticket #: 15985 DST #: 3

Superior Testers Enterprises LLC
PO Box 138 Great Bend KS 67530
1-800-792-6902

Printed: 2011.04.09 @ 04:37:36



DRILL STEM TEST REPORT

L B Exploration Inc.
 2135 2nd Road Holyrood
 Kansas 67450+9021
 ATTN: Scott Alberg

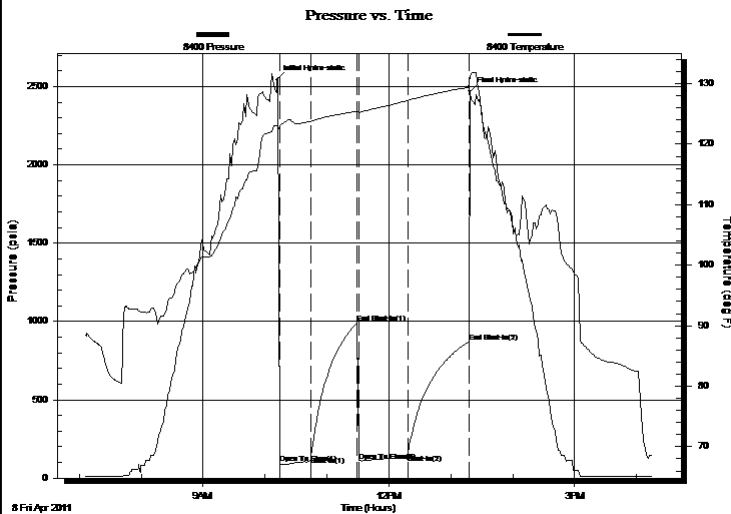
Lakin # 14
14/32S/15W Barber
 Job Ticket: 15985 **DST#: 3**
 Test Start: 2011.04.08 @ 07:06:00

GENERAL INFORMATION:

Formation: **Viola Zone**
 Deviated: No Whipstock: ft (KB)
 Test Type: Conventional Bottom Hole (Initial)
 Time Tool Opened: 10:14:30 Tester: Dylan E Ellis
 Time Test Ended: 16:15:30 Unit No: 3345/Pratt/124
 Interval: **4888.00 ft (KB) To 4950.00 ft (KB) (TVD)** Reference Elevations: 1979.00 ft (KB)
 Total Depth: 4950.00 ft (KB) (TVD) 1971.00 ft (CF)
 Hole Diameter: 7.88 inches Hole Condition: Fair KB to GR/CF: 8.00 ft

Serial #: 8400 Outside
 Press @ RunDepth: 150.17 psia @ 4947.10 ft (KB) Capacity: 5000.00 psia
 Start Date: 2011.04.08 End Date: 2011.04.08 Last Calib.: 2011.04.09
 Start Time: 07:06:00 End Time: 16:15:30 Time On Btm: 2011.04.08 @ 10:11:30
 Time Off Btm: 2011.04.08 @ 13:18:30

TEST COMMENT: 1ST Opening 30 Minutes very strong blow /blow blew to bottom of bucket in 30 seconds
 1ST Shut-In 45 Minutes yes blow back
 2ND Opening 45 Minutes very strong blow /blew off bottom almost instantly/gas to surface 15 minutes
 2ND Shut-In 60 Minutes yes blow back



PRESSURE SUMMARY

Time (Min.)	Pressure (psia)	Temp (deg F)	Annotation
0	2542.04	123.09	Initial Hydro-static
3	94.89	122.89	Open To Flow (1)
33	138.10	123.78	Shut-In(1)
78	989.34	125.47	End Shut-In(1)
79	110.29	125.21	Open To Flow (2)
127	150.17	127.25	Shut-In(2)
186	869.13	129.39	End Shut-In(2)
187	2469.57	131.15	Final Hydro-static

Recovery

Length (ft)	Description	Volume (bbl)
190.00	Slightly Gassy cut Mud	0.94
0.00	Gas 2% Mud 98%	0.00

Gas Rates

	Choke (inches)	Pressure (psia)	Gas Rate (Mcf/d)



DRILL STEM TEST REPORT

L B Exploration Inc.
 2135 2nd Road Holyrood
 Kansas 67450+9021
 ATTN: Scott Alberg

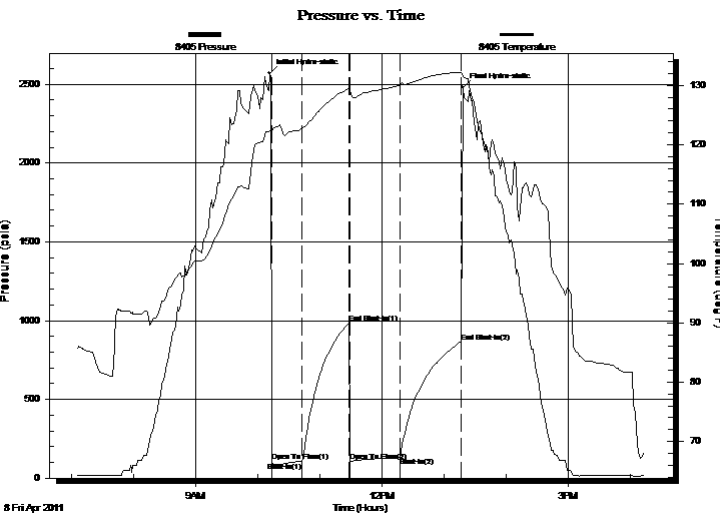
Lakin # 14
14/32S/15W Barber
 Job Ticket: 15985 **DST#: 3**
 Test Start: 2011.04.08 @ 07:06:00

GENERAL INFORMATION:

Formation: **Viola Zone**
 Deviated: No Whipstock: ft (KB)
 Test Type: Conventional Bottom Hole (Initial)
 Time Tool Opened: 10:14:30 Tester: Dylan E Ellis
 Time Test Ended: 16:15:30 Unit No: 3345/Pratt/124
 Interval: **4888.00 ft (KB) To 4950.00 ft (KB) (TVD)** Reference Elevations: 1979.00 ft (KB)
 Total Depth: 4950.00 ft (KB) (TVD) 1971.00 ft (CF)
 Hole Diameter: 7.88 inches Hole Condition: Fair KB to GR/CF: 8.00 ft

Serial #: 8405 Inside
 Press @ Run Depth: 865.10 psia @ 4946.10 ft (KB) Capacity: 5000.00 psia
 Start Date: 2011.04.08 End Date: 2011.04.08 Last Calib.: 2011.04.09
 Start Time: 07:06:00 End Time: 16:15:00 Time On Btm: 2011.04.08 @ 10:11:30
 Time Off Btm: 2011.04.08 @ 13:18:30

TEST COMMENT: 1ST Opening 30 Minutes very strong blow /blow blew to bottom of bucket in 30 seconds
 1ST Shut-In 45 Minutes yes blow back
 2ND Opening 45 Minutes very strong blow /blew off bottom almost instantly/gas to surface 15 minutes
 2ND Shut-In 60 Minutes yes blow back



PRESSURE SUMMARY

Time (Min.)	Pressure (psia)	Temp (deg F)	Annotation
0	2570.42	122.34	Initial Hydro-static
2	108.18	121.81	Open To Flow (1)
31	102.71	122.65	Shut-In(1)
77	982.50	129.41	End Shut-In(1)
78	109.30	129.22	Open To Flow (2)
126	132.40	129.90	Shut-In(2)
186	865.10	132.19	End Shut-In(2)
187	2481.07	131.60	Final Hydro-static

Recovery

Length (ft)	Description	Volume (bbl)
190.00	Slightly Gassy cut Mud	0.94
0.00	Gas 2% Mud 98%	0.00

Gas Rates

	Choke (inches)	Pressure (psia)	Gas Rate (Mcf/d)



DRILL STEM TEST REPORT

TOOL DIAGRAM

L B Exploration Inc.
 2135 2nd Road Holyrood
 Kansas 67450+9021
 ATTN: Scott Alberg

Lakin # 14
14/32S/15W Barber
 Job Ticket: 15985 **DST#: 3**
 Test Start: 2011.04.08 @ 07:06:00

Tool Information

Drill Pipe:	Length: 4692.00 ft	Diameter: 3.80 inches	Volume: 65.82 bbl	Tool Weight: 2000.00 lb
Heavy Wt. Pipe:	Length: 0.00 ft	Diameter: 0.00 inches	Volume: 0.00 bbl	Weight set on Packer: 20000.00 lb
Drill Collar:	Length: 189.00 ft	Diameter: 2.25 inches	Volume: 0.93 bbl	Weight to Pull Loose: 26000.00 lb
			<u>Total Volume: 66.75 bbl</u>	Tool Chased 0.00 ft
Drill Pipe Above KB:	21.00 ft			String Weight: Initial 62000.00 lb
Depth to Top Packer:	4888.00 ft			Final 62000.00 lb
Depth to Bottom Packer:	ft			
Interval between Packers:	62.10 ft			
Tool Length:	90.10 ft			
Number of Packers:	2	Diameter: 6.75 inches		

Tool Comments:

Tool Description	Length (ft)	Serial No.	Position	Depth (ft)	Accum. Lengths
-------------------------	--------------------	-------------------	-----------------	-------------------	-----------------------

Shut-In Tool	5.00			4865.00	
Hydraulic Tool	5.00			4870.00	
Jars	6.00			4876.00	
Safety Joint	2.00			4878.00	
Packer	5.00			4883.00	28.00 Bottom Of Top Packer
Packer	5.00			4888.00	
Perforations	5.00			4893.00	
Change Over Sub	0.75			4893.75	
Drill Pipe	31.60			4925.35	
Change Over Sub	0.75			4926.10	
Perforations	19.00			4945.10	
Recorder	1.00	8405	Inside	4946.10	
Recorder	1.00	8400	Outside	4947.10	
Bull Plug	3.00			4950.10	62.10 Bottom Packers & Anchor

Total Tool Length: 90.10



DRILL STEM TEST REPORT

FLUID SUMMARY

L B Exploration Inc.
2135 2nd Road Holyrood
Kansas 67450+9021
ATTN: Scott Alberg

Lakin # 14
14/32S/15W Barber
Job Ticket: 15985 **DST#: 3**
Test Start: 2011.04.08 @ 07:06:00

Mud and Cushion Information

Mud Type: Gel Chem	Cushion Type:	Oil API:	deg API
Mud Weight: 9.00 lb/gal	Cushion Length: ft	Water Salinity:	ppm
Viscosity: 61.00 sec/qt	Cushion Volume: bbl		
Water Loss: 10.80 in ³	Gas Cushion Type:		
Resistivity: ohm.m	Gas Cushion Pressure: psia		
Salinity: 5000.00 ppm			
Filter Cake: 1.00 inches			

Recovery Information

Recovery Table

Length ft	Description	Volume bbl
190.00	Slightly Gassy cut Mud	0.943
0.00	Gas 2% Mud 98%	0.000

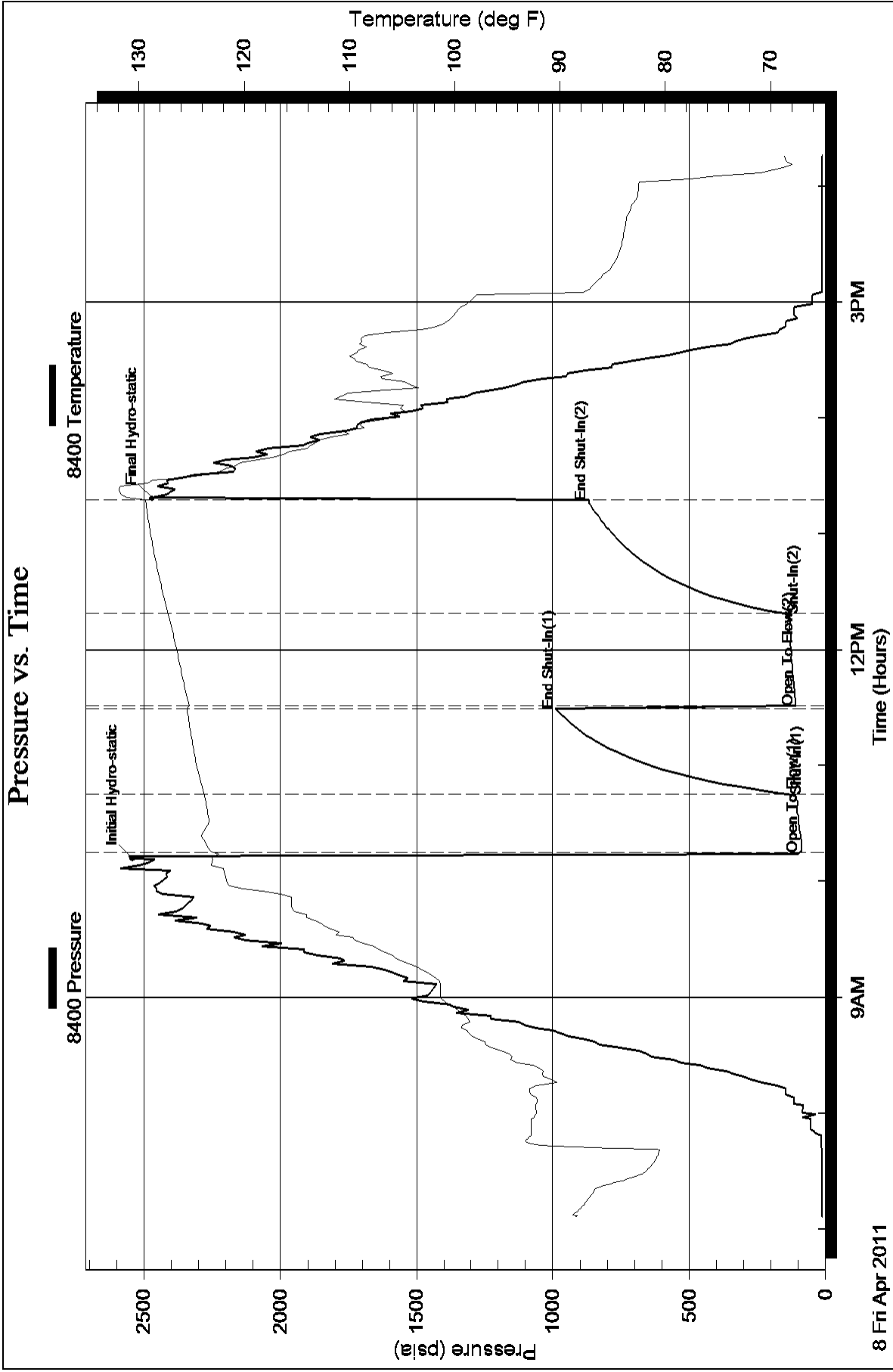
Total Length: 190.00 ft Total Volume: 6558.363 bbl

Num Fluid Samples: 0 Num Gas Bombs: 0 Serial #:

Laboratory Name: Laboratory Location:

Recovery Comments: I tried to gauge the gas but didn't have enough pressure behind it to measure the gas/ but i caught a gas sample of it.

Pressure vs. Time



Pressure vs. Time

