

Timothy G. Pierce

Petroleum Geologist

GEOLOGIST'S REPORT DRILLING TIME AND SAMPLE LOG

COMPANY N-10 Exploration, LLC
 LEASE Medicine River Ranch 'B' #9
 FIELD Landis
 LOCATION 2310' FNL & 690' FEL
 SEC 15 TWP 34S RGE 11W
 COUNTY Barber STATE Kansas
 CONTRACTOR Hardt Drilling Rig #1
 SPUD 11-28-2011 COMP 12-03-2011
 RTD 5073 LTD 5072
 MUD UP 2891 TYPE MUD Chemical
 SAMPLES SAVED FROM 4000 TO RTD
 DRILLING TIME KEPT FROM 4000 TO RTD
 SAMPLES EXAMINED FROM 4000 TO RTD
 GEOLOGICAL SUPERVISION FROM 2900 TO RTD
 GEOLOGIST ON WELL Tim Pierce

ELEVATIONS

KB 1367'
 DF _____
 GL 1357'
 Measurements Are All
 From Kelly Bushing

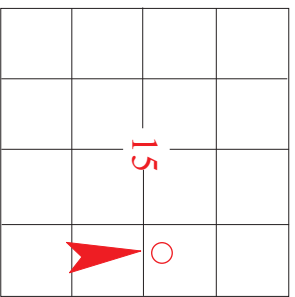
CASING

CONDUCTOR _____
 SURFACE 8-5/8" at 269'
 PRODUCTION 5-1/2" at 5065'

ELECTRICAL SURVEYS

DIL / CN-CD
Log-Tech


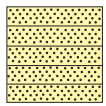
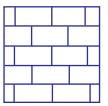
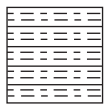

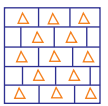
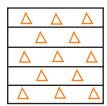
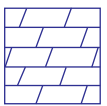
FORMATION TOPS	ELECTRIC LOG	SAMPLE
Heebner Sh.	3652 (-2285)	NA
Iatan LS.	4094 (-2727)	4091 (-2724)
Stark Sh.	4335 (-2968)	4333 (-2966)
Cherokee Sh.	4558 (-3191)	4557 (-3190)
Mississippi	4606 (-3239)	4606 (-3239)
Chattanooga Sh.	4884 (-3517)	4885 (-3518)
Viola	4938 (-3571)	4935 (-3568)
Simpson	5031 (-3664)	5027 (-3660)




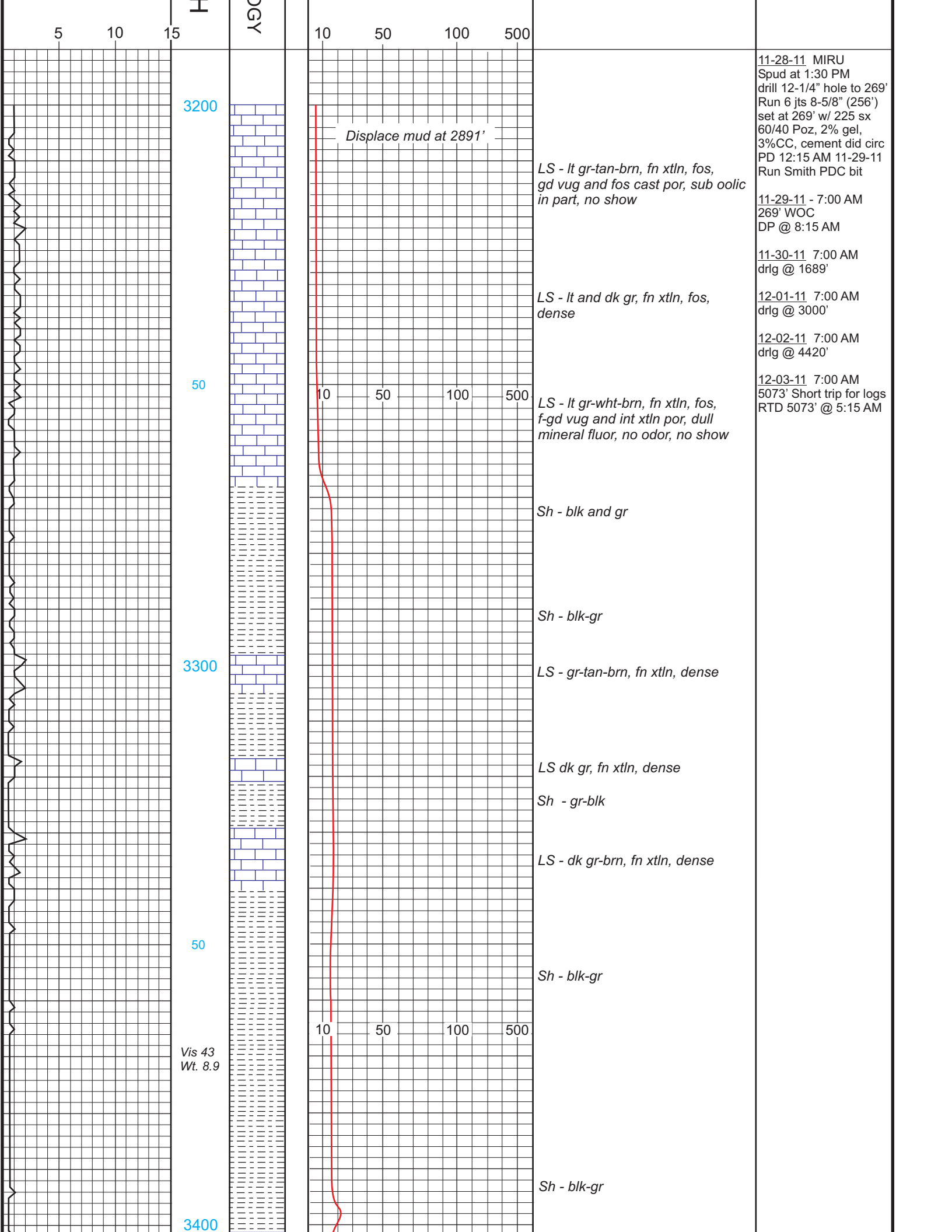
REMARKS Samples and electric logs indicate a probable pay zone in the Mississippi from 4608'-4708'.
Sample shows and/or gas kicks were noted in the Meisner Sand from 4911'-4912'; Chattanooga Shale from 4884'-4894'; and in the Pawnee LS from 4520'-4524'. There were no other zones of interest indicated by samples or electric logs.

Timothy G. Pierce

LEGEND

							
Anhydrite	Sandstone	Limestone	Shale	Carb Sh	Cherty LS	Chert	Dolomite

DRILLING TIME IN MINUTES PER FOOT Rate of Penetration Decreases 	DEPTH	LITHOLOG	GAS SCALE	SAMPLE DESCRIPTION	REMARKS
---	-------	----------	-----------	--------------------	---------



5 10 15

OGY

10 50 100 500

3200

Displace mud at 2891'

LS - lt gr-tan-brn, fn xtln, fos, gd vug and fos cast por, sub oolic in part, no show

11-28-11 MIRU Spud at 1:30 PM drill 12-1/4" hole to 269' Run 6 jts 8-5/8" (256') set at 269' w/ 225 sx 60/40 Poz, 2% gel, 3%CC, cement did circ PD 12:15 AM 11-29-11 Run Smith PDC bit

11-29-11 - 7:00 AM 269' WOC DP @ 8:15 AM

11-30-11 7:00 AM drlg @ 1689'

LS - lt and dk gr, fn xtln, fos, dense

12-01-11 7:00 AM drlg @ 3000'

12-02-11 7:00 AM drlg @ 4420'

50

10 50 100 500

LS - lt gr-wht-brn, fn xtln, fos, f-gd vug and int xtln por, dull mineral fluor, no odor, no show

12-03-11 7:00 AM 5073' Short trip for logs RTD 5073' @ 5:15 AM

Sh - blk and gr

Sh - blk-gr

3300

LS - gr-tan-brn, fn xtln, dense

LS dk gr, fn xtln, dense

Sh - gr-blk

LS - dk gr-brn, fn xtln, dense

50

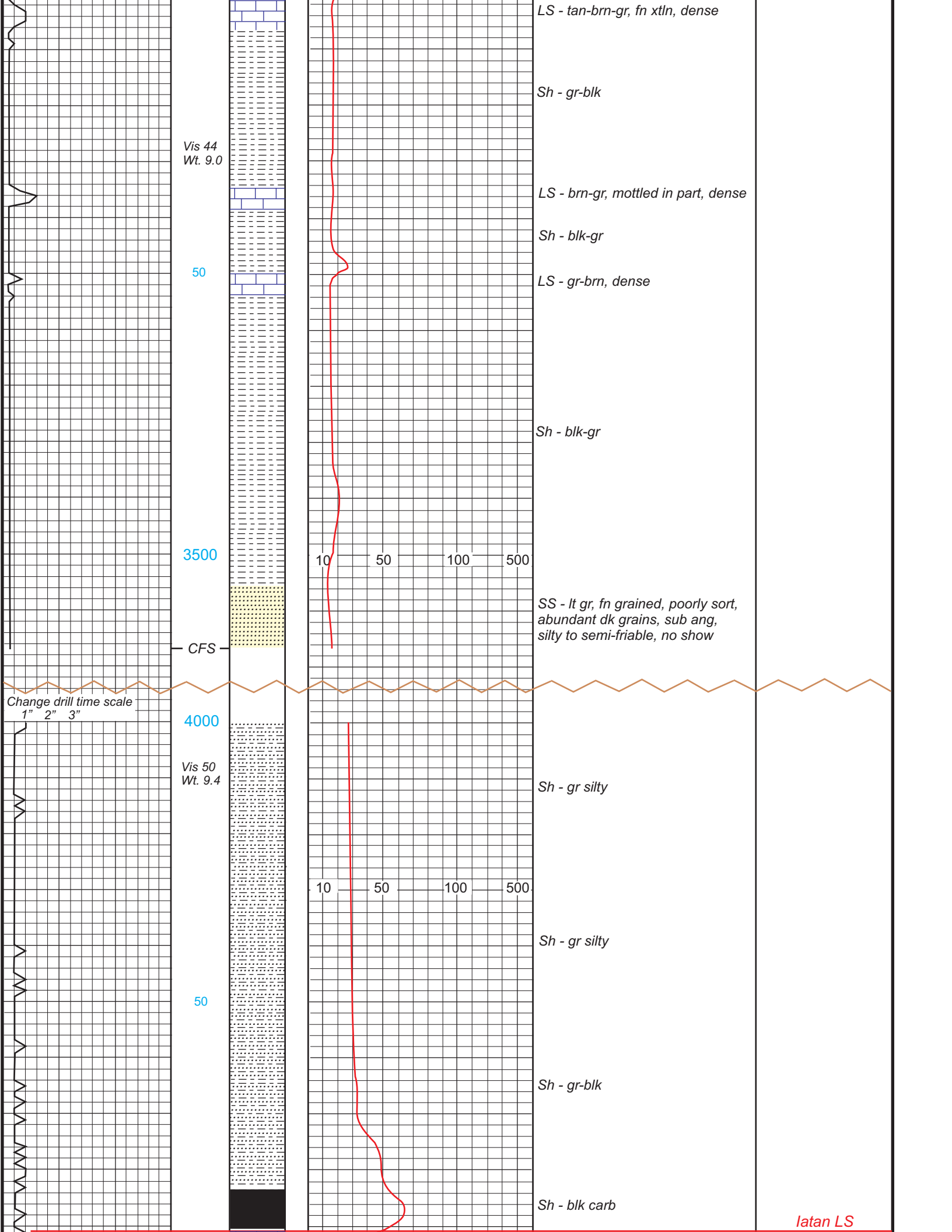
Sh - blk-gr

10 50 100 500

Vis 43 Wt. 8.9

Sh - blk-gr

3400



LS - tan-brn-gr, fn xtl, dense

Sh - gr-blk

Vis 44
Wt. 9.0

LS - brn-gr, mottled in part, dense

Sh - blk-gr

50

LS - gr-brn, dense

Sh - blk-gr

3500

10 50 100 500

SS - lt gr, fn grained, poorly sort,
abundant dk grains, sub ang,
silty to semi-friable, no show

CFS

Change drill time scale
1" 2" 3"

4000

Sh - gr silty

Vis 50
Wt. 9.4

10 50 100 500

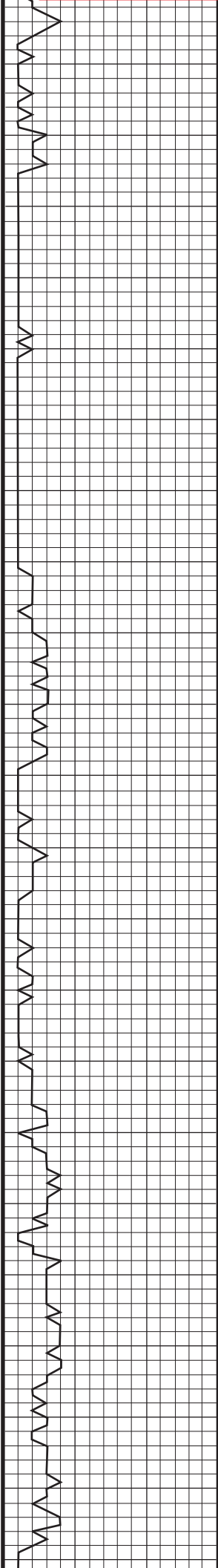
Sh - gr silty

50

Sh - gr-blk

Sh - blk carb

latan LS



4100

Vis 50
Wt. 9.6

50

4200

Vis 48
Wt. 9.6

50

Vis 47
Wt. 9.5

4300

10 50 100 500

10 50 100 500

10 50 100 500

LS - brn-tan, fn xtln, dense

LS - gr-brn, dense

Sh - gr-blk, silty in part, scat gr-wht sand, semi-friable, no show

Sh - gr-blk

Sh - blk carb

LS - gr-wht, fn xtln, slt fos, no vis por, no odor, dull fluor, no vis show

Sh - blk-gr

LS - tan-crm-lt gr, fn xtln, fos, gd vug and int xtln por, scat chalk, no show

LS - gr-tan, fn xtln, dense to slt chalky

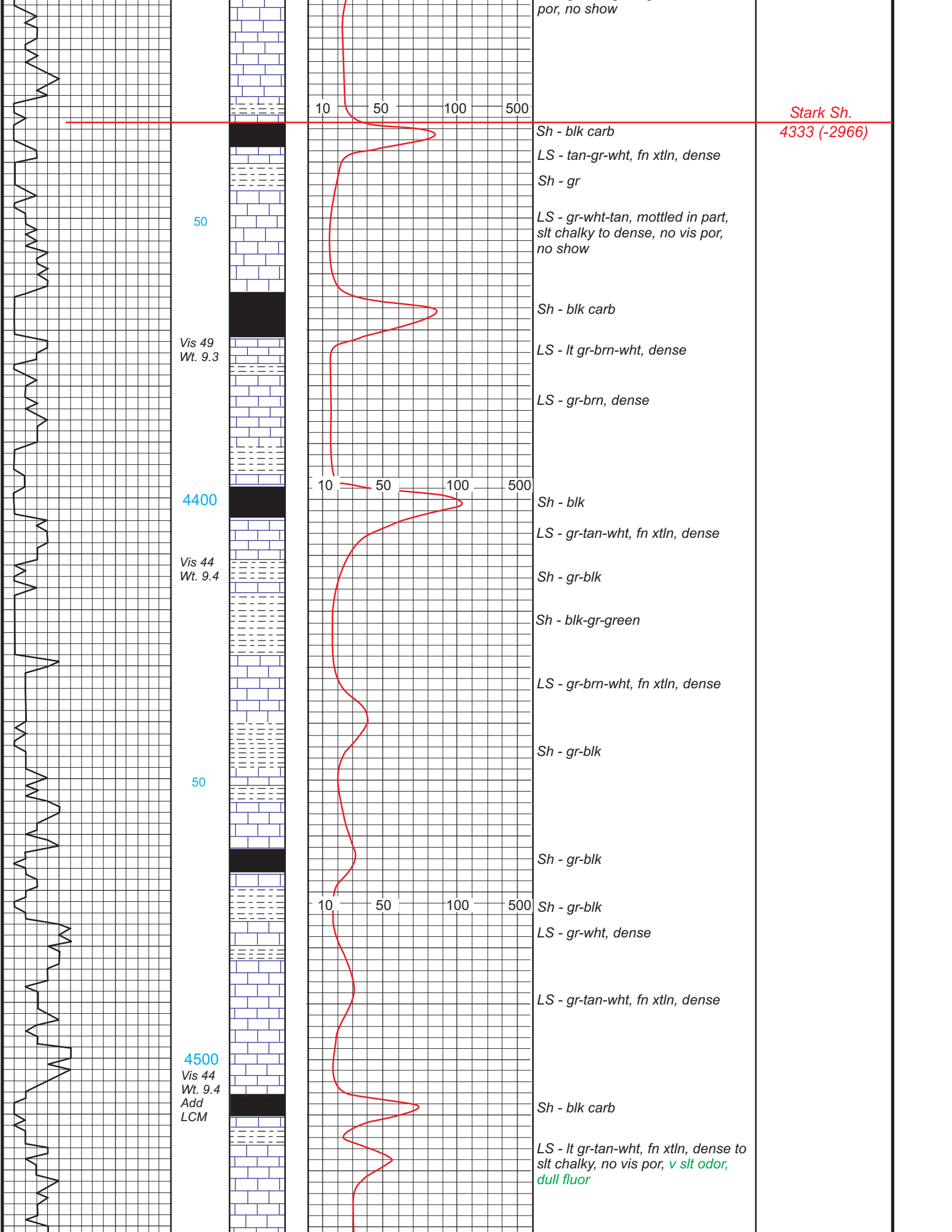
LS - gr-tan-wht, fn xtln, dense

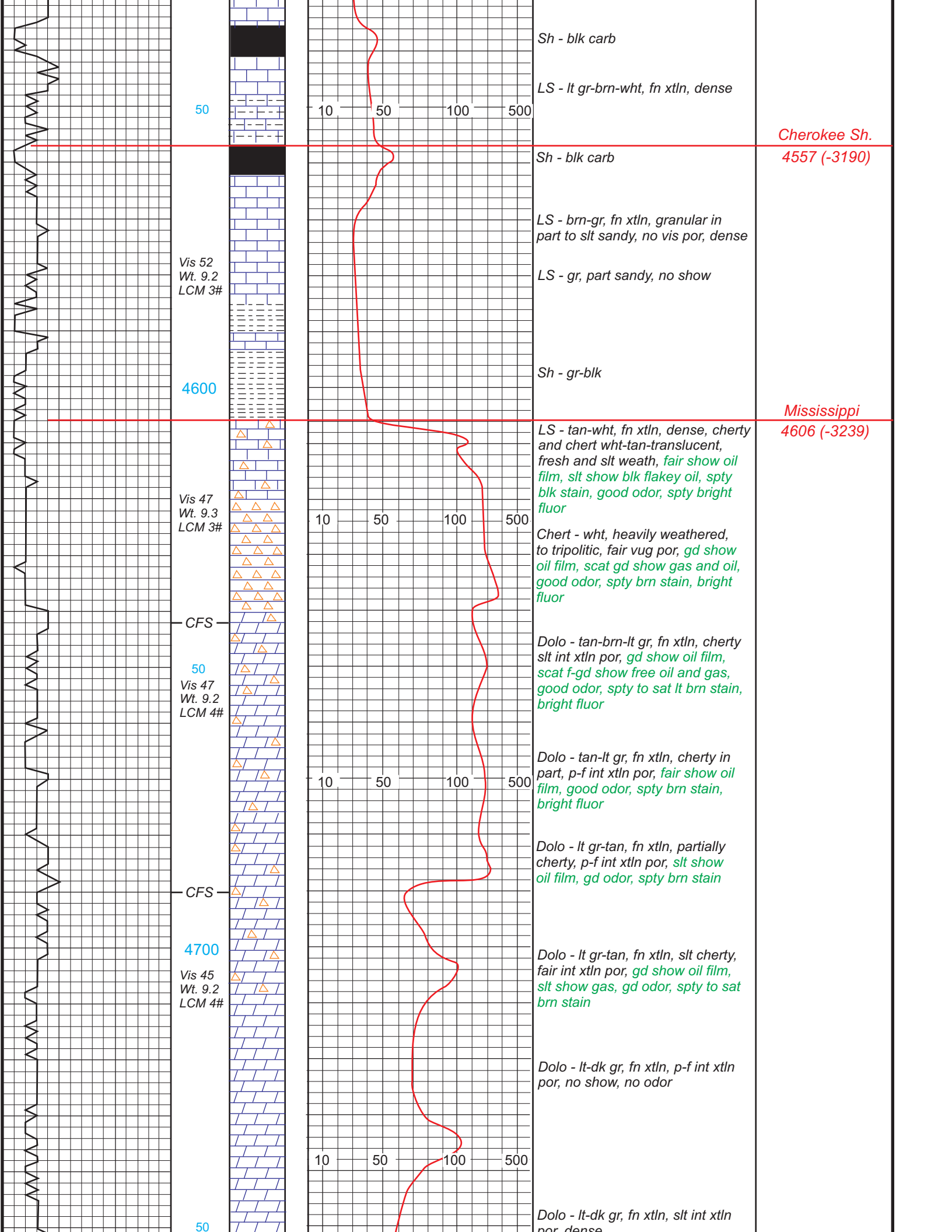
LS - tan-gr, fn xtln, scat fair pinpoint and int xtln por, scat chalk

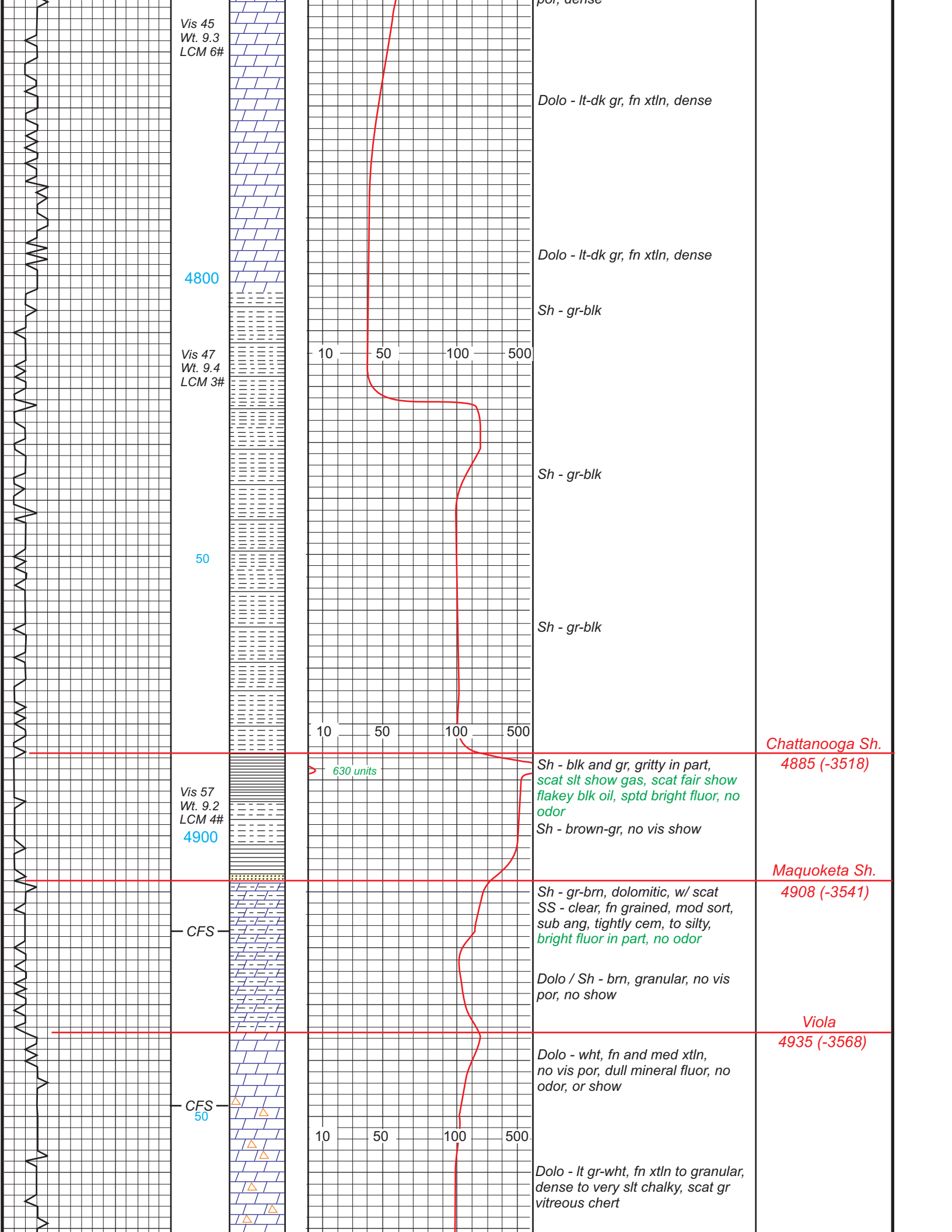
LS - lt gr-tan, fn xtln, dense

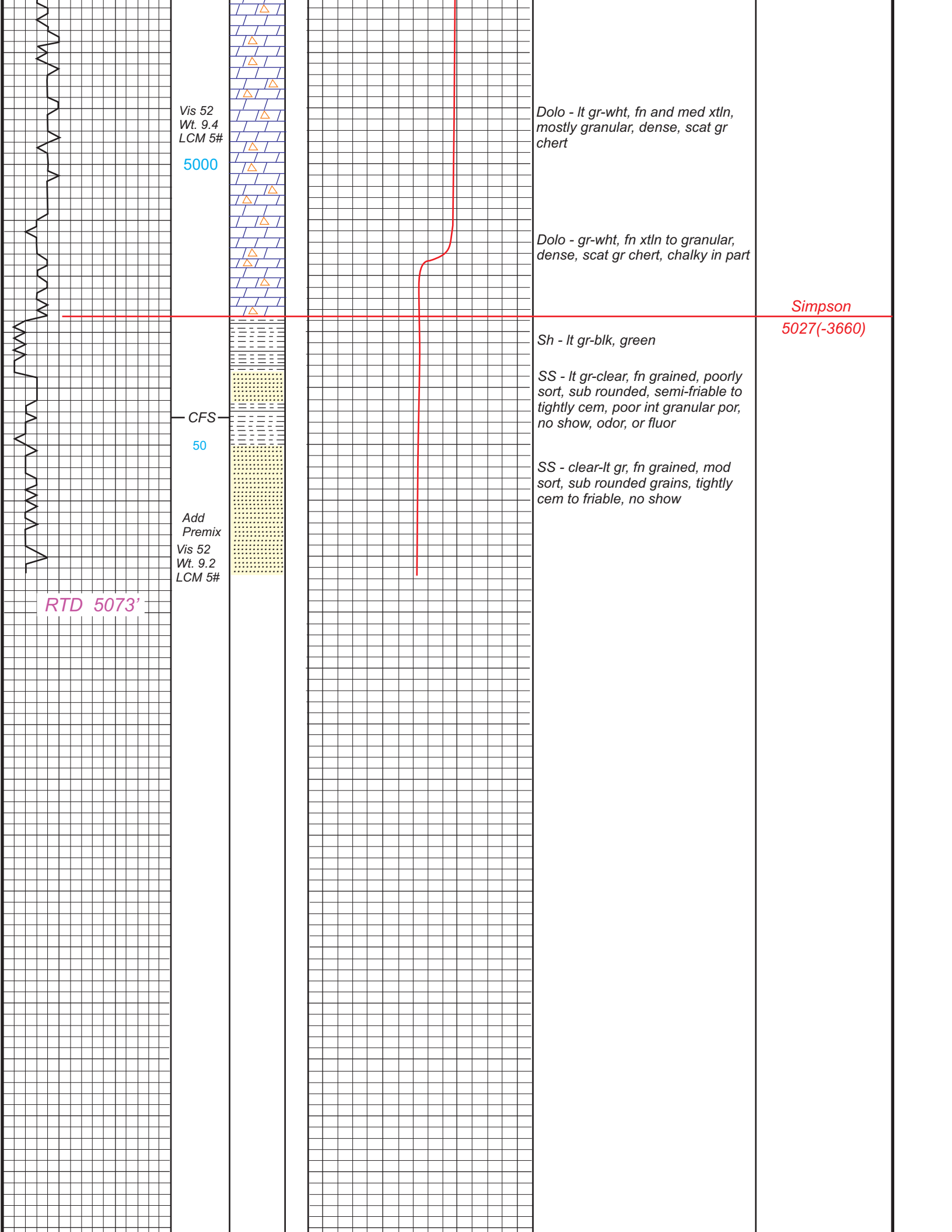
LS - gr-wht, fn xtln, dense to part chalky

LS - gr-brn, gd vug and oolitic









Vis 52
Wt. 9.4
LCM 5#

5000

Dolo - lt gr-wht, fn and med xtl, mostly granular, dense, scat gr chert

Dolo - gr-wht, fn xtl to granular, dense, scat gr chert, chalky in part

*Simpson
5027(-3660)*

CFS

50

Sh - lt gr-blk, green

SS - lt gr-clear, fn grained, poorly sort, sub rounded, semi-friable to tightly cem, poor int granular por, no show, odor, or fluor

SS - clear-lt gr, fn grained, mod sort, sub rounded grains, tightly cem to friable, no show

Add
Premix
Vis 52
Wt. 9.2
LCM 5#

RTD 5073'

