

GEOLOGICAL REPORT

Noble Petroleum, Inc.

Scholfield #1

2400' FSL & 930' FWL Section 30-T28S-R4E

Butler County, Kansas

COMMENCED: 10-12-11

STATUS: Dry

COMPLETED: 10-18-11

A.P.I. #: 15-015-23924

CONTRACTOR: C & G Drilling, Inc.

OPERATOR LIC.: 31389

SIZE OF HOLE: 7 7/8"

FIELD: Unnamed

SURFACE PIPE: 8 5/8"

ELEVATION: 1267 K.B.

CEMENTED WITH: N/A

LOGS: DIL, CDL/CNL, BHCS

LONG STRING: None

MUD SYSTEM: Chemical

CEMENTED WITH: N/A

OTHER:

R.T.D.: 2960'

William M. Stout

William M. Stout
Geologist

FORMATION TOPS

1261 G.L. 1267 K.B.

	<u>Sample</u>	<u>Log</u>
Heebner	1618 -351	1619 -352
Douglas	1654 -387	1654 -387
Lansing	1881 -614	1881 -614
Kansas City	2196 -929	2196 -929
Base Kansas City	2417 -1150	2415 -1148
Cherokee	2591 -1324	2591 -1324
Mississippi	2676 -1409	2680 -1413
Kinderhook	2784 -1517	2784 -1517
Simpson	2888 -1621	2888 -1621
Arbuckle	2894 -1627	2894 -1627
Total Depth	2960 -1693	2960 -1693

SAMPLE SHOW DESCRIPTIONS

Simpson 2888' (-1621)

2888' - 2894'

Sandstone - white, medium to very fine grain, medium hard, dense, medium to poorly sorted, well cemented, trace stain with weak cut and fluorescence, no visible porosity. (Covered by DST #1)

Arbuckle 2894' (-1627)

2894' - 2896'

Dolomite - white, cream, medium to fine crystalline, medium hard, trace fair intercrystalline porosity, with trace free oil on breaks, much barren porosity. (Covered by DST #1)

DST #1 2855' - 2895'

Open tool 30 min. with weak surface blow. Close tool 45 min. Open tool 30 min. with no blow. Close tool 60 min. Recovered 10' drilling mud.

IFP 45 - 43#

FFP 43 -39#

ISIP 1009#

FSIP 1109#

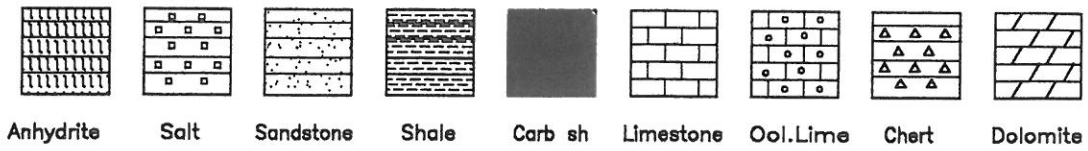
HP 1399 - 1362#

Temp. 103 degrees

CONCLUSIONS

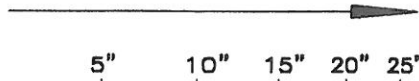
The decision was made to plug this hole as dry and abandon.

LEGEND

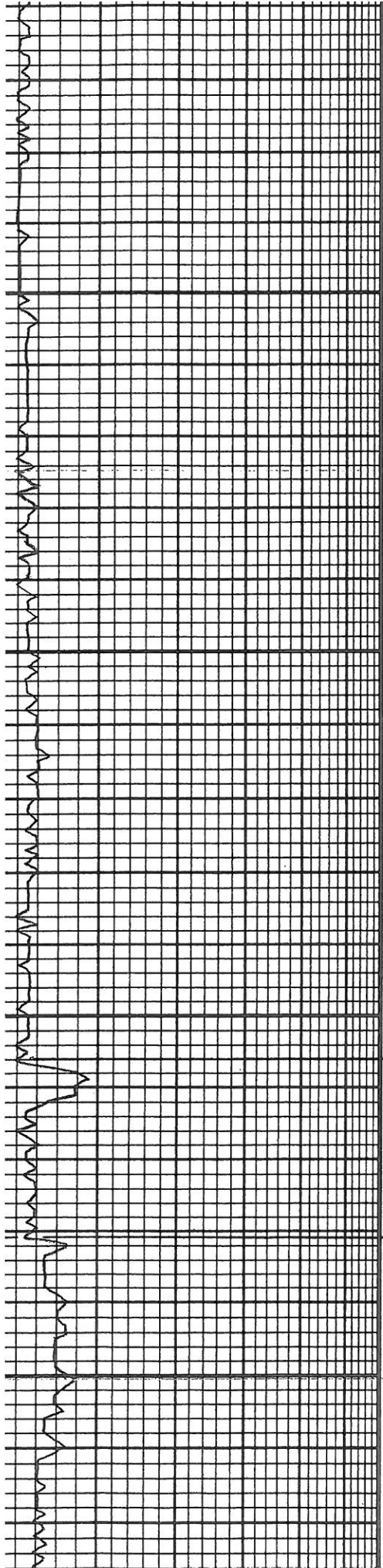


LOG 7710

DRILLING TIME IN MINUTES
PER FOOT
Rate of Penetration Decreases



	DEPTH	LITHOLOGY	SAMPLE DESCRIPTIONS	OIL SHOWS	REMARKS
<div style="display: flex; justify-content: space-around;"> 5" 10" 15" 20" 25" </div>	1600		15-16. BRN. LL. G. F. V. F. S. MIA NS. NUB W/ Silt Gy		GL. 1261 K.B. 1267
			SA. W. G. BLU. CLAY. W/ LK. BRN F. X. DRE. NS. NUB		HEEBNER 1618 (-351)
	50		15-16. BRN. F. X. F. E. D. F. O. S. MIA N.E. NUB W/ Silt Gy 15-16 W/ Silt Gy		DOUGLAS 1654 (-387)
			SA. G. GRN S/SH.		
	1700		SA. BR. W/ SS. G. F. G. MIA. GR ARE NS. P/B		
			SA. G. GRN SA.		
			55-6. LL. G. F. G. MIA. GR S/ F. E. N. NS. F. D. P. B		



50

1800

50

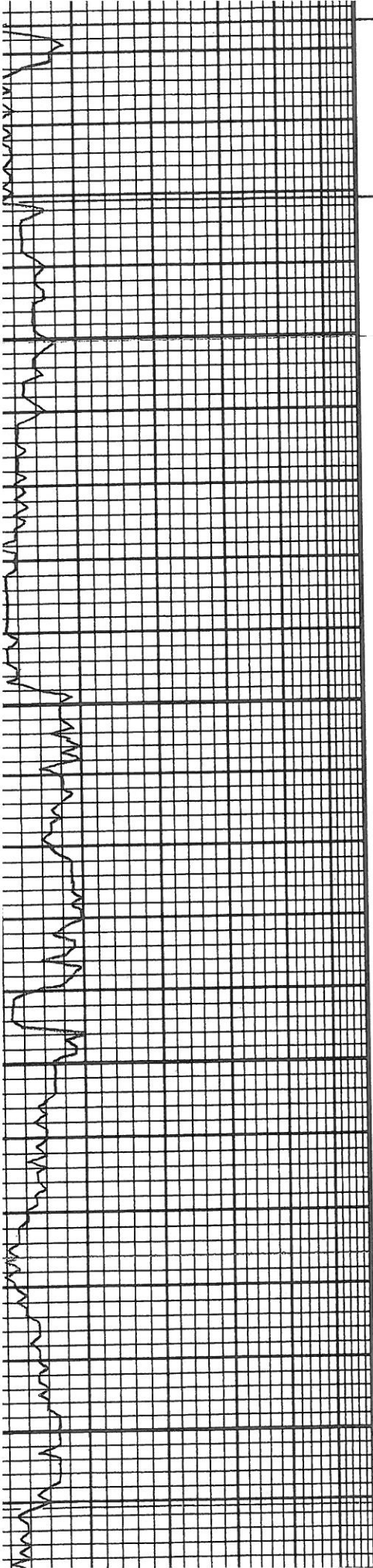
1900

SS-G, LF-G, F-G MICR. CALC S/P. NS, F-P-SS
SS-NA.
SS-NA. ENC CALC. HD. NS. P-P
SS-NA w/SA. GY.
SS-G, F-G ARG. CALC. MICH NS. R.P. w/SA. GY
SH-GY M-G w/SS-NA.
SH-GY M-G GY.
SA-NA
LS-BRN. F-Y FOS. DUS. NS NUA
SH-GY GY. S/SA
LS-LF. BRN. LF-GY F-Y FOS DUS NS. FOLG SS
LS-LF. BRN. BRN. F-Y. FOS. DUS. NS. NUP
LS-BRN. GY F-Y. FOS. DUS. NS. NUA
SH-GY M-GY w/LS-NA.

Vis. 34
wt. 9.1
2nd LCM

BROWN LIME
1856 (-589)

LANSING
1881 (-614)



1900

50

2000

50

LS-BRN. F.Y. FOS. DNS. NS NUY
SIT-6Y BRN. S/SR
LS-LI. BRN. LI. GY F.Y. FOS DNS NS FEUCG #
LS-LI. BRN. BRN. F.Y. FOS. DNS NS. NUY
LS-BRN. GY F.Y. FOS. DNS. NS. NUY
SIT-6Y 11-6Y w/LS. NR.
SIT-6Y 11-6Y
SH-H. A.
LS-LI. GY LI. BRN. F.X. FEW FOS. DNS. NS. NUY ENK
LS-LI. BRN. BRN. F.X. DNS. FOS. NS. NUY
LS-LI. BRN. F.X. DNS. SCAT. CLEAR CALC. XTRLS. NS. NUY
LS-LI. BRN. BRN. F.Y. DNS. FOS. w/ CALC. XTRLS. CLEAR
LS-NA. w/SIT 6Y BRN. S/SR
LS-BRN. LI. BRN. F.X. DNS. FOS. ABUND. GYSS. CALC. XTRLS. CLEAR. NS. NUY
LS-LI. GY F.X. FOS. CARY. NS. PEXOS.
LS-LI. BRN. BRN. F.M.X. FOS. SLI GARY. NS. SCAT. XTRLS. BRN. GY
LS-LI. BRN. GY F.X. FOS. DNS. NS. NUY
LS-BRN. LI. BRN. F.X. DNS. FOS. NS. NUY
LS-BRN. GY F.Y. FOS. DNS. REG. S/NOU. NS. NUY w/SIT 6Y BRN. S/SR.
SH-GY. BRN. GY

BROWN LIME
1856 (-589)

LANSING
1881 (-614)

7:00 AM 10-15-11

W/STY NS. DMS. NS. NUS

50

LS-L4 BRN. GY F-X. ROS. DNS. NS. NUS

LS-DRN. LF. BRN. F-X DUS, ROS. NS. NUS

LS-DRN. GY F-Y FOS. DNS. REG. S/DOLC. NS. NUS W/SH-GY GRN S/SW.

SH-GY, BR-GY BKW.

SH-BLK CARB. BK GY.

SH-DKG GY S/CALL. ND.

2100

SH-LKGY GY

SH-GY M-GY CALL. HA.

SH-RA.

50

SH-GY M-GY GRN.

SH-RA.

2200

LS-L6 BRN. BRN. GY F-X. FOS. DNS. NS. NUS W/SH-RA.

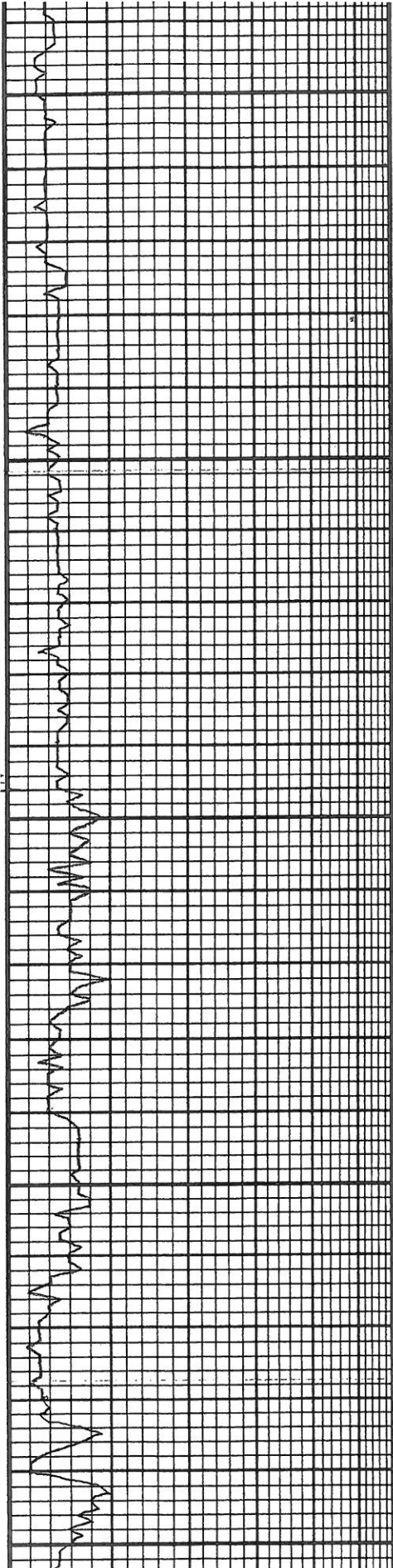
LS-L4 BRN. BRN. F-X FOS. LKGY. DNS. NS. NUS

LS-L4 GY F-X. FOS. DNS. CHKY NS. NUS BR-DKG GY SA.

LS-L4 BRN. LKGY F-X. FOS. S/CHKY NS. SLAT EXP

LS-RA DNS. NS. NUS

KANSAS CITY
2196 (-929)



2100

50

2200

50

2300

SH-DKG by S/CALL. HA.
SH-DKG by
SA by M-by CALL. HA.
SA-RA.
SH by M-by GRN.
SA-RA.
15-LG. BRN. BRN. GL F-X. FOS. DNS. NS. NUØ w/SH-RA.
15-H. BRN. BRN. F-X. FOS. CHRY. DNS. NS. NUØ
15-LG. F-X. FOS. DNS. CHRY NS. NUØ CO. DRGy SA.
15-LF. BRN. LG. F-X. FOS. S/ CHRY NS. SEAT EXP
15-RA DNS. NS. NUØ
15-LG. BRN. BRN. F-X. FOS. DNS. S/CHRY/NS. NUØ
15-ROZ. H. BRN. F-X. FOS. CHRY. NS. SEAT EXP
15-A.A. TR. GRN.
15-BRN. F-M X FOS. S/DNS. S/ CLEAR. CALX. TR. NS. FL-Ø S/GR EXP
15-L. BRN. BRN. F-X. FOS < 1000

KANSAS CITY
2196 (-929)

2300

LS-BEN. F.M X FOS. S/DNS. S/
CLFAR. LALCXRDA. NS. P2-P
S/GD. IXP

LS-L. BEN. BEN. F-Y FOS. S/DNS.
CHRY. NS. SCAT IXP

LS-L. BEN. G. F-X FOS. DNS. CHRY/
NS. NU 40

LS-BEN. G. F-Y FOS. DAK. ARC.
NS. NU 40 w/ SN. BLC. CARB.

LS-L. BEN. L.G. F-X SCAT FOS
DNS. S/CHRY. NS. NU 40

50

LS-AA. W/ SN. BLC. CARB. DKG.

LS-L. BEN. F-X. FOS. CHRY/ NS.
SCAT IXP

LS-G. BEN. L.G. F-Y. DNS. FOS.
CARB. ARC. NS. NU 40

LS-A.A.

2400

SH-G. M-G. GRN.

LS-BEN. H. BEN. F-Y. DNS. FOS.
FOS. S/V. F-F. DOLIC. NS. NU 40

SA DKG. GY

SA-AA.

SN DKG. GY. GRN. S/BLC. CARB.

50

LS-H. BEN. BEN. F-X. FOS. DNS.
NS. NU 40

SH-G. GRN.

SH-AA. 7/DKG

LS-L. BEN. F-Y. DNS. SCAT FOS
S/100G. NS. NU 40

LS-L. BEN. H.G. F-Y. DNS. CHRY/
NS. NU 40

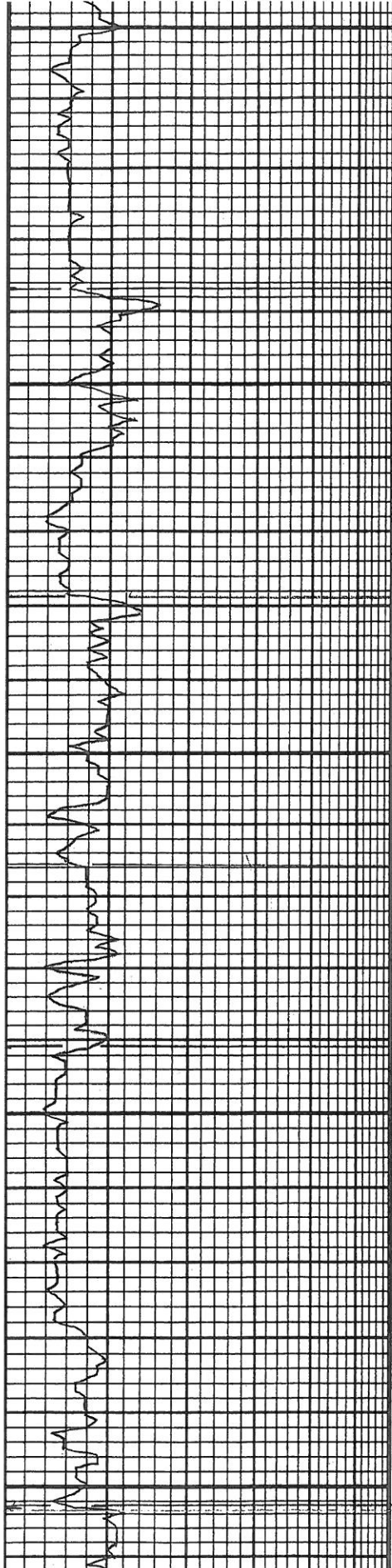
Vis 39
Wt. 9.1
2nd LCM

5:30 AM 10-16-11

BASE KANSAS CITY
2417 (-1150)

MARMATON
2443 (-1176)

ALTAMONT
2487 (-1220)



50

2500

50

2600

50

LS-H. BRN. BEN. F-X. FOS. DNS. NS. NU#
SH GY GRN.
SH-AR 3/DK GY
LS-LI. BRN. F-X. DNS. SCAT FOS 3/1000. NS. NU#
LS-LI. BRN. GY F-X DNS. CNKY NS. NU#
LS-LI. BRN. BEN. F-X DNS. M. BLY NS. NU#
LS-AR 1/5N-GRN. GY S/SAY.
SH GY DRG BRN.
LS-LI. BRN. VFFX DNS. FEW FOS. NS. NU#
LS-AR 1/5N-GRY DRG
LS-BEN. LI. BRN. F-X. DNS. FEW FOS NS. NU# w/SH GY GRN.
SH-DRG CARB. GY w/LS-AR.
LS-BEN GY F-X. DNS. S/REG NS. NU# w/SH GY.
LS-LI. BRN. GY BEN. F-X FOS. DNS. NS w/SN-BLK CARB DRG
LS-SH-AR. S/SN-LI GY GRN.
SH-LI GY GRN. SAY.
SH-AR.
SH-AR 3/DK GY.
SH-DRG GY GRN S/SAY w/LS. LI. BRN. BANGY F-X DNS FOS. NS. NU#
SH-DRG GY S/RY CALL. F. DRG w/LS-AR. 60 BLK CARB SH LS-BEN GY M-X DNS REG NS. NU# w/ABOVE DRG SH
LS-LI. BRN. BEN. VFFX DNS. BLK 100 FT. NS. NU# S/SN-DRG.

ALTAMONT
2487 (-1220)

PAWNEE
2529 (-1262)

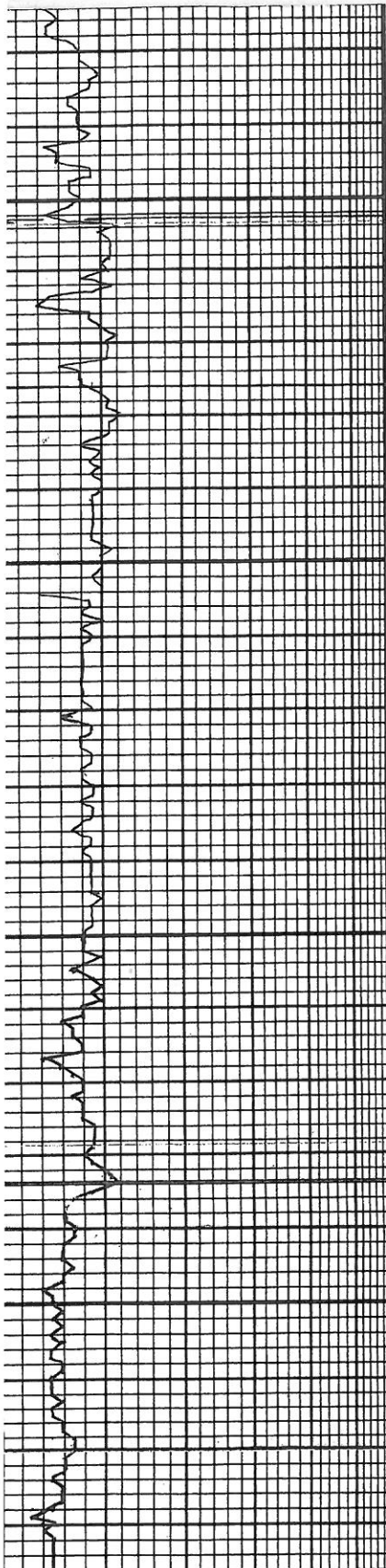
FORT SCOTT
2566 (-1299)

CHEROKEE
2591 (-1324)

Vis 40
Wt 93
2" LCM

9:30 PM 10-16-1.

ARDMORE
2653 (-1386)



50

2700

2750

2800

SN-DK GY GRN S/SAY W/LS LT. IRON BRNG F-X DMS FOR NS NUP
SN-DK GY GRN S/VY CALL. TORPED W/LS-AA. LG BCK CARB SH LS-BAN G M-X DMS REC W/LS NUP W/ABUND DMS
LS-LT BRN. IRN. VFX DMS BCK W/PT. N.S. NUP S/S H-DKG
SN-BCK CARB. W/LS-AA. LS-AA W/IRON SN DKG BCK 2/LAB W/CAT ORNG WTH GRN. TENS-OP S/SH. LS SN-DK GY GRN S/VY CALL. TORPED W/LS-AA. LG BCK CARB SH LS-BAN G M-X DMS REC W/LS NUP W/ABUND DMS
LS-AA W/GRN M-X DMS NS NUP W/CAT. S/SH. AA. LS-AA W/GRN M-X DMS NS NUP W/CAT. S/SH. AA.
LS-LT BRN WTH. LT GRN M-C X DMS NS NUP W/CAT. HD
LS-LT BRN. LT GRN. F-M-X DMS. CHRY NS. NUP S/CLAY
LS-LT BRN. WTH. F-M-X DMS. CHRY NS. NUP ABUND GY SN-TORPED
LS-AA. W/GR. GY DKG
LS-LT BRN. LT GRN. F-M-X DMS. CHRY S/CLAY NS. NUP W/SH-AA
SN-DK GY GRN TORPED W/LS-LBAN LT GR M-X DMS W/LS/AA.
LS: CR. M. TAN, M. HRD-HRD, DMS, IRN-VFGXIN, TR FOSS, NØ NSFOC
SH: GR. GRN-GRY-TR. IRD BRN. CLAYMS?
LS WH-CR. M. ST. CHRY-HRD DMS, MIC. VFG-MX IN. TR FOSS, NØ NSFOC
SH: GR. GRN-DK. GRY-TR. IRD BRN.
SH: GR. GRN-DK. GRY, M. ST. M. HRD. DMS, HCKLY - FISSILE
DEC. LS: AA, LESS CHRY NØ NSFOC
LS: CR. M. ST. HRD, DMS, TR FOSS, TR CHRY. VFGXIN, NØ NSFOC
SH: GR. GRN-DK. GRY, M. ST. M. HRD, HCK. - FISS.
SH: H. DK GRY, ST. + CLAYEY - M. HRD, DMS, HCKLY
TR. LS: CR. M. H. A. NØ NSFOC
SH: GR. GRN-DK. GRY, ST. + CLAYEY - TR. STY, M. HRD, DMS, HCKLY, TR. PYR.
SH: GR. GRN-DK. GRY, A. P. LESS ST. + CLAYEY, DEC. BRONZES W/ TR. COPPER SPOTS + FLOR. HCK. LEATHY
SH: DK GRY-GRN, M. ST. + CLAYEY - TR. STY, TR. STY, DEC. FLOR W/ TR. COPPER SPOTS
SH: GR. GRN-DK. GRY, M. ST. + CLAYEY DMS, TR. MIC. A, TR. FLOR.

9:30 PM 10-16-11

ARDMORE
2653(-1386)

MISSISSIPPI
2676(-1409)

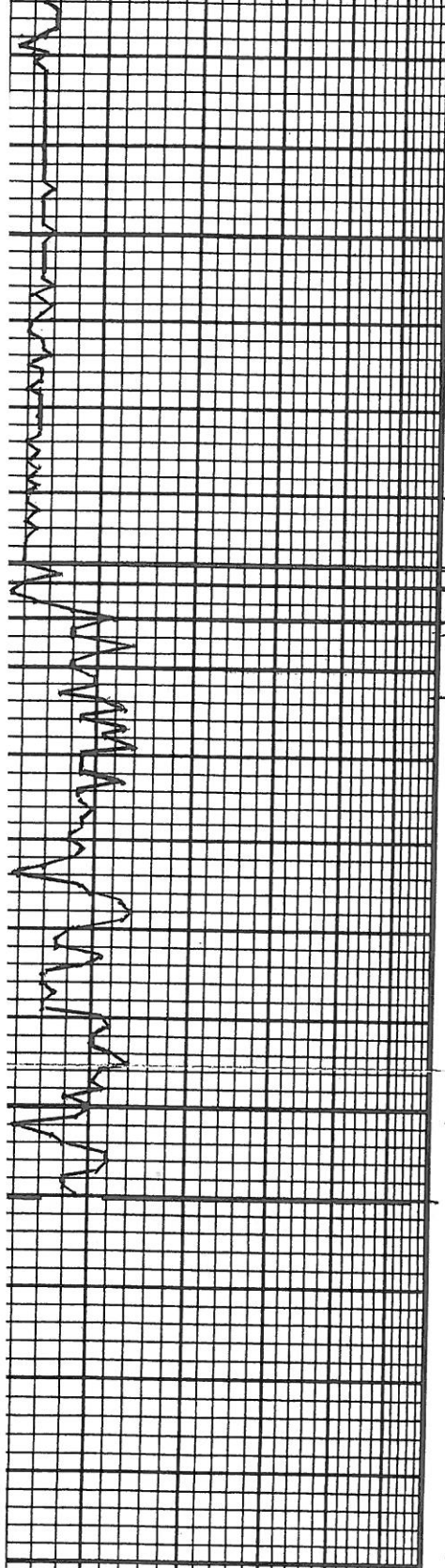
TRIP BIT @ 271
BACK DRG. 8:3
10-17-11 Devic
3

VIS. 39
WT. 9.3
2# LCM

Stop relieved by
Sto 12:15 PM. 1
± 2750'

Kinderhook 5
-1517

Chattanooga
-1553



2850

1

CFS

CFS

CFS

2900

CFS

2950

CFS

3000

EARLY HYDRA SLTY, OCC. FLUOR. rd. spores
Sh: gry-brn, m.sft.-m.hrd. dns, tr. mica, tr. fluor. rd. spores
Sh: brn, m.sft., dns, early hy. frags by mica, tr. slty, tr. rd. spores
Sh: brn, m.sft.-m.hrd, dns, tr. slty, earthy-hackly. tr. spores
Sh: dk gry-brn, m.sft., occ. slty, tr. pyr., tr. (2-3 pc) blue grn. SIMPSON SS. 19d. odor NO VIS. SS. NO OTHER SHOW
Sh: dk gry-brn, m.sft.-m.hrd dns, tr. slty, tr. pyr., hackly rare sd. grains. FAIR odor, NO STN. CUT. F. O. OF ϕ
Sh: A. A. Gd. odor tr. ss. wh. m. hrd, dns med. VEG. pr. int. ϕ NSFOC
SS: A. A. tr. dol. med. pr. no vis. ϕ , tr. wh. cut. slty, tr. pyr., tr. mica, tr. fluor. rd. spores
Dol: A. A. tr. Vug. ϕ , tr. dol. chiz. NSFOC
Dol: crm-gry, hrd, dns, fin - VEG. in, tr. slty, abrad. wh-gry. cut. tr. pr. Vug. NSFOC
Dol: crm, m.sft.-f. h. - hrd, dns, fin-VEG. chiz, tr. pr. Vug. tr. pr. int. ϕ NSFOC
Dol: crm, hrd, dns, fin-VEG. slt. tr. cut. tr. wh. mica. tr. tr. pr. Vug. ϕ NSFOC
Dol: wh-gry-fan, hrd, dns, fin-VEG. in, occ. tr. Vug. ϕ moldic, pr. int. ϕ NSFOC pyr.
Dol: wh-brn, hrd, dns, occ. must. tr. A. VEG. in, pr. - No Vug. or int. ϕ NSFOC pyr.
Dol: A. A., occ. gry, occ. b. sft. chiz, tr. dol. chiz. tr. dol. dol., no vis ϕ NSFOC
HB 1619-352
AB 1654-387
L 1881-614
KG 2146-929
BCC 2415-1140
CK 2591-1324
MISS 2680-1413
K 2784-1517
S 2880-1621
A 2884-1627

CITIZEN 100 yd. -1553

DST #1 2855'-2855'
 Rac: 10' M
 Times 30-45-30-4
 I.F. 45-43
 I.S.I. 1009 ps
 F.F. 43-39 ps
 F.S.I. 1109 ps

Simpson SS.
 -1621 Weak Sho.
 Arbuckle Fm.
 -1627

D.T.D. 2960'
 L.T.D. 2960'
 Deviation 1°