

# T30S, R7W, 6th P.M.

# SGOMI

Well location, MORROW LAND 3007 #28-1H, located as shown in the SW 1/4 SE 1/4 of Section 28, T30S, R7W, 6th P.M., Kingman County, Kansas.

## BASIS OF ELEVATION

SPOT ELEVATION LOCATED AT THE NORTHEAST CORNER OF SECTION 22, T33S, R7W, 6th P.M. TAKEN FROM THE ANTHONY, QUADRANGLE, KANSAS, HARPER COUNTY, 7.5 MINUTE QUAD (TOPOGRAPHIC MAP) PUBLISHED BY THE UNITED STATES DEPARTMENT OF THE INTERIOR, GEOLOGICAL SURVEY. SAID ELEVATION IS MARKED AS BEING 1348 FEET.

## BASIS OF BEARINGS

BASIS OF BEARINGS IS A G.P.S. OBSERVATION.



## CERTIFICATE

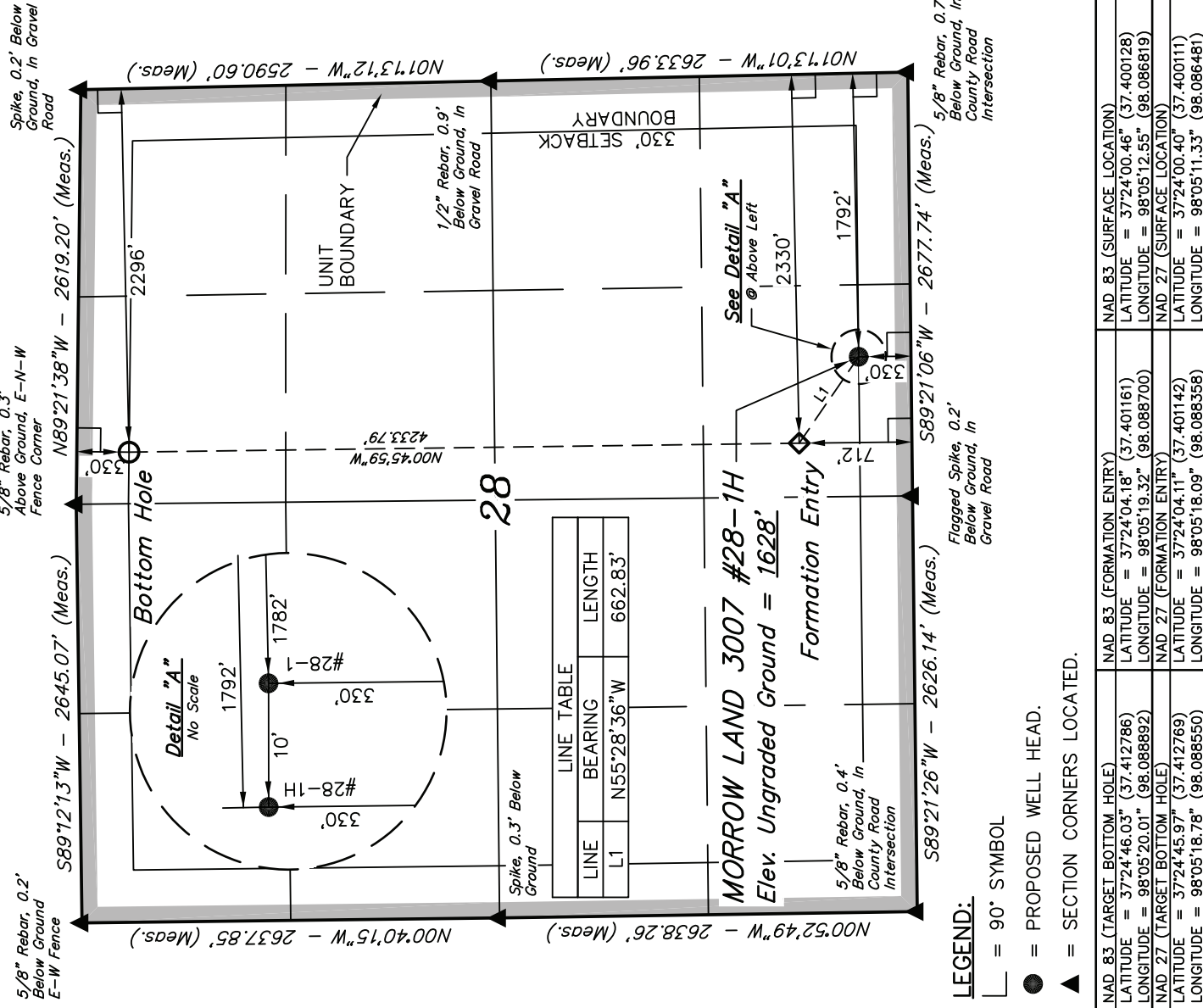
THIS IS TO CERTIFY THAT THE ABOVE PLAT WAS PREPARED FROM FIELD NOTES OF ACTUAL SURVEYS MADE BY ME OR UNDER MY SUPERVISION AND THAT THE SAME ARE TRUE AND CORRECT TO THE BEST OF MY KNOWLEDGE AND BELIEF.

JOHN A. JOHNSON  
REGISTERED LAND SURVEYOR  
REGISTRATION NO. 1586  
STATE OF KANSAS

REVISED: 11-22-11

**UNTAH ENGINEERING & LAND SURVEYING**  
85 SOUTH 200 EAST - VERNAL, UTAH 84078  
(435) 789-1017

SCALE	1" = 1000'	DATE SURVEYED:	11-01-11	DATE DRAWN:	11-07-11
PARTY	L.S. K.H. C.C.	REFERENCES	G.L.O. PLAT		
WEATHER	COOL	FILE	SGOMI		



LINE TABLE		
LINE	BEARING	LENGTH
L1	N55°28'36"W	662.83'

**MORROW LAND 3007 #28-1H**  
Elev. Ungraded Ground = 1628'

- LEGEND:**
- = 90° SYMBOL
  - = PROPOSED WELL HEAD.
  - ▲ = SECTION CORNERS LOCATED.

POINT	DESCRIPTION	NAD 83 (FORMATION ENTRY)	NAD 83 (SURFACE LOCATION)
1	Bottom Hole	LATITUDE = 37°24'04.18" (37.401161) LONGITUDE = 98°05'19.32" (98.088700)	LATITUDE = 37°24'00.46" (37.400128) LONGITUDE = 98°05'12.55" (98.086819)
2	Formation Entry	LATITUDE = 37°24'04.11" (37.401142) LONGITUDE = 98°05'18.09" (98.088358)	LATITUDE = 37°24'00.40" (37.400111) LONGITUDE = 98°05'11.33" (98.086481)