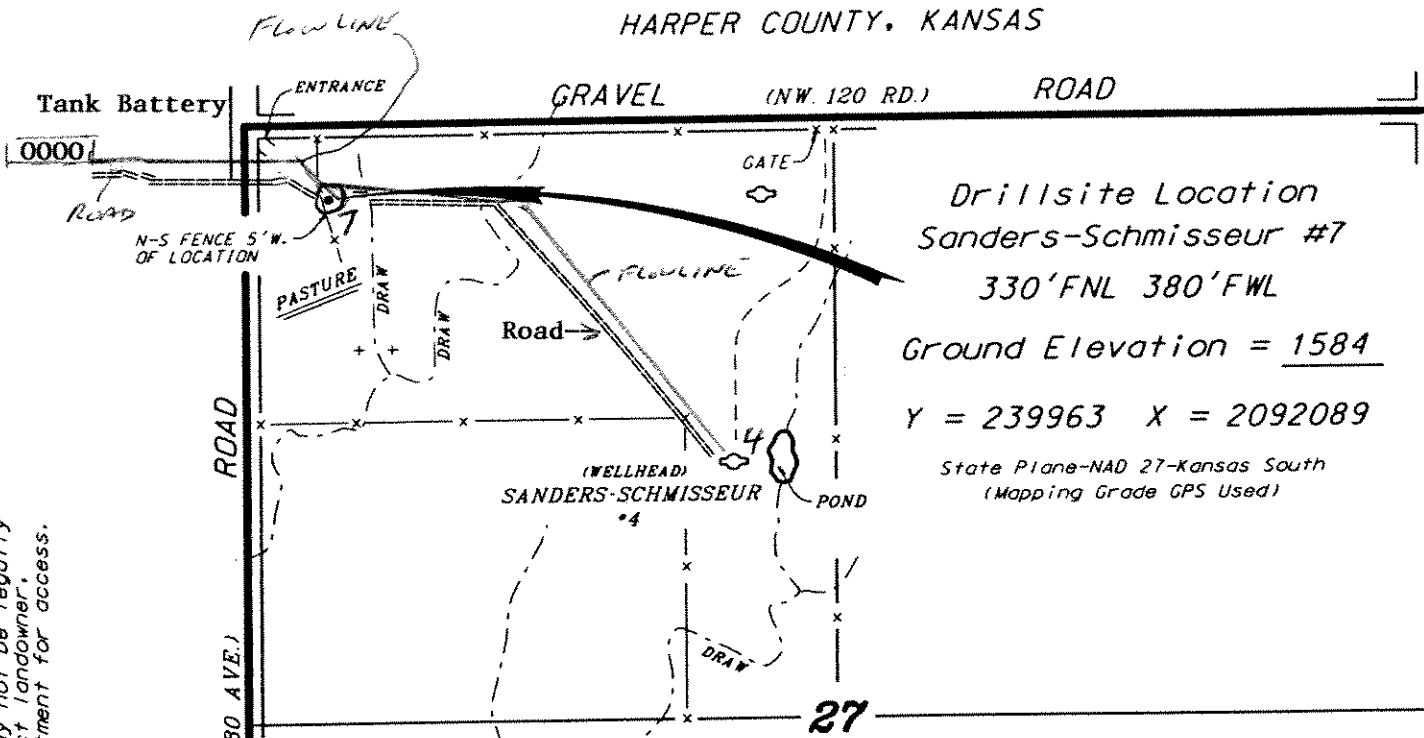


ACCESS ROAD, FLOW LINE, TANK BATTERY

ATLAS OPERATING, LLC
 SANDERS-SCHMISSEUR LEASE
 NW. 1/4, SECTION 27, T31S, R8W
 HARPER COUNTY, KANSAS



Drillsite Location
 Sanders-Schmisneur #7
 330'FNL 380'FWL
 Ground Elevation = 1584
 Y = 239963 X = 2092089
 State Plane-NAD 27-Kansas South
 (Mapping Grade GPS Used)

Notes:

1. Set iron rod at location site.
2. All flagging Red & Yellow.
3. Overhead power available at W. 1/2 of N. line and N. 1/4 of W. line, Sec. 27 and at the NE. corner of Sec. 27.
4. Kansas One Call System Inc. should be notified before excavation (1-800-344-7233).
5. CAUTION: Various pipelines in Sec. 27.
6. Contact landowner for best access.

*Ingress and egress to location as shown on this plat is per usage only and may not be legally opened for public use. Contact landowner, tenant and county road department for access.

