

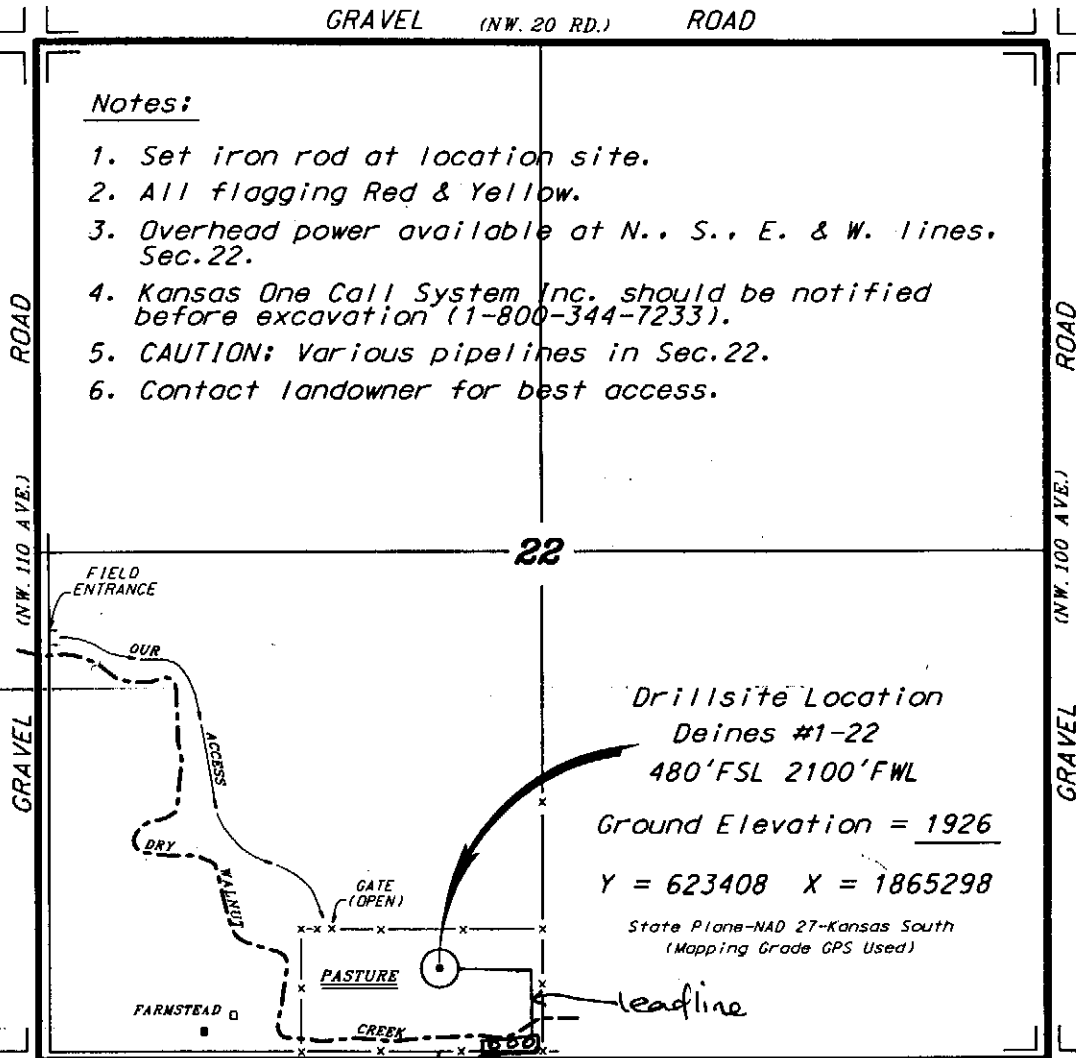
F.G. HOLL COMPANY, LLC
 DEINES LEASE
 SW.1/4, SECTION 22, T19S, R15W
 BARTON COUNTY, KANSAS

GRAVEL (NW. 20 RD.) ROAD

Notes:

1. Set iron rod at location site.
2. All flagging Red & Yellow.
3. Overhead power available at N., S., E. & W. lines, Sec. 22.
4. Kansas One Call System Inc. should be notified before excavation (1-800-344-7233).
5. CAUTION; Various pipelines in Sec. 22.
6. Contact landowner for best access.

* Ingress and egress to location as shown on this plat is for usage only and may not be legally opened for public use. Contact landowner, tenant and county road department for access.



Drillsite Location
 Deines #1-22
 480' FSL 2100' FWL

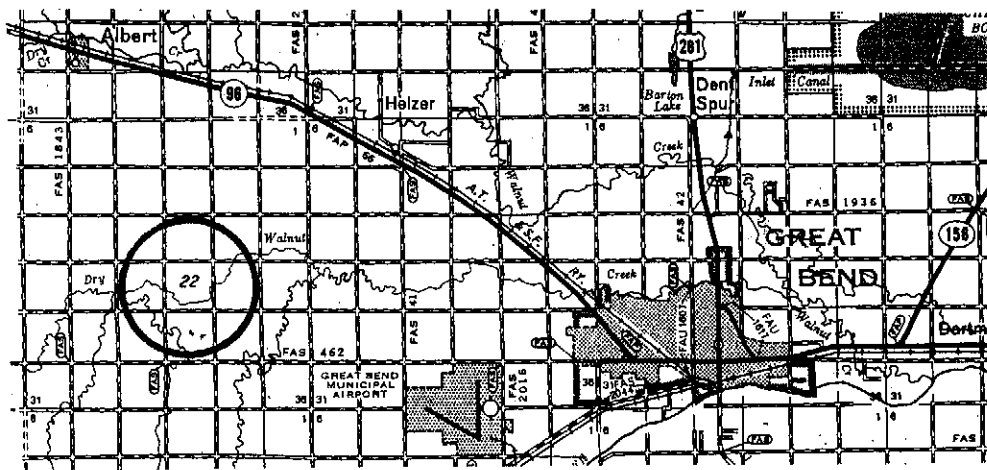
Ground Elevation = 1926

Y = 623408 X = 1865298

State Plane-NAD 27-Kansas South
 (Mapping Grade GPS Used)

GRAVEL (NW. 10 RD.) ROAD
 FLAGGED ROAD OPPOSITE LOC.
 Tank battery Access Road

SCALE 1" = 1000'



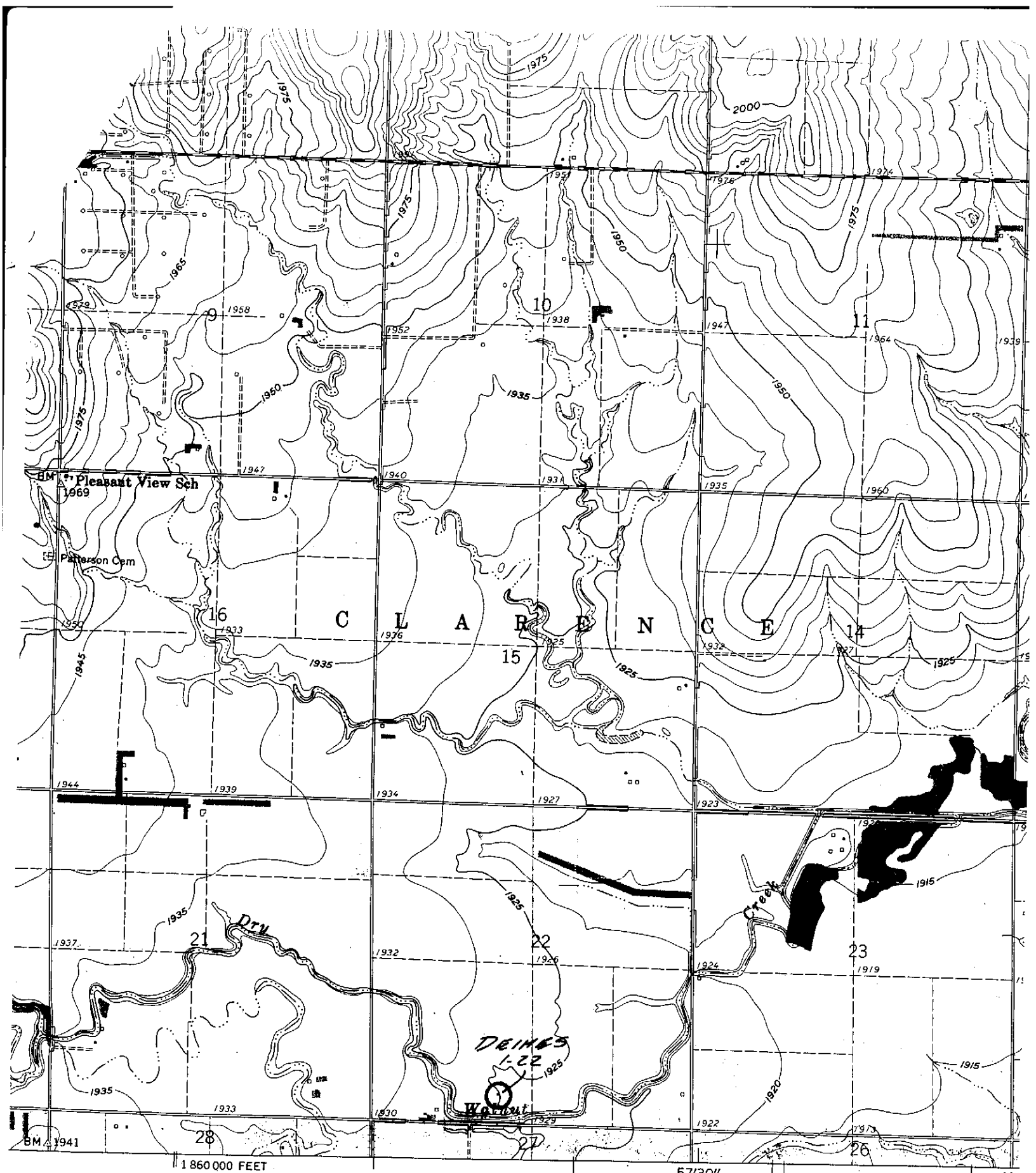
* Controlling data is based upon the best maps and photographs available to us and upon a regular section of land containing 640 acres.

* Approximate section lines were determined using the normal standard of care of oilfield surveyors practicing in the state of Kansas. The section corners, which establish the precise section lines, were not necessarily located, and the exact location of the drillsite location in the section is not guaranteed. Therefore, the operator securing this service and accepting this plat and all other parties relying thereon agree to hold Central Kansas Oilfield Services, Inc., its officers and employees harmless from all losses, costs and expenses and said entities released from any liability from incidental or consequential damages.

* Elevations derived from National Geodetic Vertical Datum.

Date February 21, 2012

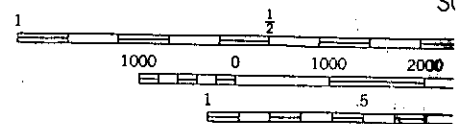
CENTRAL KANSAS OILFIELD SERVICES, INC. (620)792-1977



red, edited, and published by the Geological Survey
 and by USGS and USC&GS

Map made by USGS from aerial photographs by photogrammetric methods
 and from ground planimetric surveys 1960. Aerial photographs taken 1954

Map projection. 1927 North American datum
 6-foot grid based on Kansas coordinate system, south zone
 meter Universal Transverse Mercator grid ticks,
 4, shown in blue



CONTOUR
 DATUM