

OPERATOR

Company: Falcon Exploration, Inc.
 Address: 125 N. Market
 Suite 1252
 Wichita, KS 67202
 Contact Geologist: Brian Fisher
 Contact Phone Nbr: 316-262-1378
 Well Name: Crump # 1-14 (NE)
 Location: Sec 14 - T28S - R30W
 Pool: API: 15-069-20354-0000
 State: Kansas Field: Wildcat
 Country: USA

Scale 1:240 Imperial

Well Name: Crump # 1-14 (NE)
 Surface Location: Sec 14 - T28S - R30W
 Bottom Location:
 API: 15-069-20354-0000
 License Number: 5316
 Spud Date: 11/19/2011 Time: 00:00
 Region: Gray County
 Drilling Completed: 12/1/2011 Time: 06:25
 Surface Coordinates: 110' FNL & 330' FEL
 Bottom Hole Coordinates:
 Ground Elevation: 2792.00ft
 K.B. Elevation: 2805.00ft
 Logged Interval: 0.00ft To: 0.00ft
 Total Depth: 5420.00ft
 Formation: Mississippian
 Drilling Fluid Type: Chemical/Fresh Water Gel

SURFACE CO-ORDINATES

Well Type: Vertical
 Longitude: Latitude:
 N/S Co-ord: 110' FNL
 E/W Co-ord: 330' FEL

LOGGED BY

Keith Reavis
Consulting Geologist

Company: Keith Reavis, Inc.
 Address: 3420 22nd Street
 Great Bend, KS 67530
 Phone Nbr: 620-617-4091
 Logged By: KLG #136 Name: Keith Reavis

CONTRACTOR

Contractor: Sterling Drilling Company
 Rig #: 5
 Rig Type: mud rotary
 Spud Date: 11/19/2011 Time: 00:00
 TD Date: 12/1/2011 Time: 06:25
 Rig Release: Time:

ELEVATIONS

K.B. Elevation: 2805.00ft Ground Elevation: 2792.00ft
 K.B. to Ground: 13.00ft

NOTES

Based on drill stem tests #1 and #2, it was determined that 5 1/2" production casing be set and cemented through the Tarkio and the Crump #1-14 be further test through perforations and stimulation in the Stotler and Tarkio formations.
 The samples were saved and will be available for review at the Kansas Geological Survey Well Sample Library located in Wichita, KS.
 Respectfully submitted,
 Keith Reavis

Falcon Exploration, Inc.

DAILY DRILLING REPORT

DATE	7:00 AM DEPTH	REMARKS
11/24/2011	3449	Geologist Keith Reavis on location @ 0335 hrs, 3347 ft. Check Tooke Daq drilling ahead Foraker, Stotler, gas kick and show in Stotler warrants test, short trip, conduct DST #1
11/25/2011	3614	complete DST #1, successful test, TIH w/bit, resume drilling, Tarkio, cfs and TOH for DST #2, conduct and complete, successful test, resume drlg.
11/26/2011	3876	drilling ahead, Bern, Topeka, Lecompton, Heebner, Douglas, Lansing
11/27/2011	4413	drilling ahead, LKC, Stark, BKC
11/28/2011	4801	drilling ahead, Marmaton, Pawnee, Cherokee
11/29/2011	5120	drilling ahead Cherokee, Morrow, Miss. (St. Gen), St. Louis, cfs, begin short trip prior to DST #3, upper St. Louis
11/30/2011	5287	finish short trip, ctch, TOH w/bit, in with tools, conduct DST #3, successful test, TIH w/bit, resume drilling
12/01/2011	5420	TD @ 0625 hrs, cfs/ctch, TOH for logs, conduct logging operations, parted Line #1 on first pass, re-head, finish logs, operator elected to straddle Test Miss St. Lo C, released geologist Keith Reavis @ 1800 hrs, test supervised by Brian Fisher

Falcon Exploration, Inc.

WELL COMPARISON SHEET

DRILLING WELL Crump #1-14 110' FNL & 330' FEL Sec. 14 T28S R30W					COMPARISON WELL Falcon - Goossen #1-14 1310' FSL & 880' FEL Sec. 14 T28S R30W				COMPARISON WELL Williams #1-13 1230' FSL & 730' FEL Sec. 13 T28S R30W			
2805 KB					2806 KB		Structural Relationship		2810 KB		Structural Relationship	
Formation	Sample	Sub-Sea	Log	Sub-Sea	Log	Sub-Sea	Sample	Log	Log	Sub-Sea	Sample	Log
Chase	2657	148	2659	146	2657	149	-1	-3	2674	136	12	10
Winfield	2732	73	2728	77	2728	78	-5	-1	2746	64	9	13
Towanda	2774	31	2778	27	2772	34	-3	-7	2790	20	11	7
Ft. Riley	2826	-21	2826	-21	2820	-14	-7	-7	2840	-30	9	9
Cottonwood	3086	-281	3088	-283	3082	-276	-5	-7	3097	-287	6	4
Neva	3156	-351	3153	-348	3145	-339	-12	-9	3164	-354	3	6
Foraker	3263	-458	3262	-457	3254	-448	-10	-9	3273	-463	5	6
Stotler	3500	-695	3498	-693	3486	-680	-15	-13	3513	-703	8	10
Tarkio	3576	-771	3572	-767	3561	-755	-16	-12	3586	-776	5	9
Bern	3674	-869	3672	-867	3656	-850	-19	-17	3683	-873	4	6
Topeka	3778	-973	3772	-967	3760	-954	-19	-13	3786	-976	3	9
Lecompton	3947	-1142	3945	-1140	3932	-1126	-16	-14	3968	-1158	16	18
Heebner	4130	-1325	4128	-1323	4112	-1306	-19	-17	4138	-1328	3	5
Lansing	4228	-1423	4227	-1422	4208	-1402	-21	-20	4233	-1423	0	1
Stark	4569	-1764	4566	-1761	4550	-1744	-20	-17	4576	-1766	2	5
Marmaton	4724	-1919	4724	-1919	4710	-1904	-15	-15	4737	-1927	8	8
Pawnee	4812	-2007	4811	-2006	4796	-1990	-17	-16	4820	-2010	3	4
Cherokee	4860	-2055	4856	-2051	4838	-2032	-23	-19	4868	-2058	3	7
Miss St. Gen.	5109	-2304	5110	-2305	5090	-2284	-20	-21	5094	-2284	-20	-21
St. Louis	5210	-2405	5210	-2405	5198	-2392	-13	-13	5183	-2373	-32	-32
Warsaw	np				5554	-2748			5545	-2735		
Osage	np				5844	-3038			5808	-2998		
Viola	np				6100	-3294			6134	-3324		
Arbuckle	np				6278	-3472			6279	-3469		
Total Depth	5420	-2615	5420	-2615	6379	-3573	958	958	6351	-3541	926	926

COMPARISON WELL Falcon Dirks #1-12 2020' FSL & 770' FWL Sec. 12 T28S R30W					COMPARISON WELL Apache - Harvey #1 C NE SE Sec. 14 T28S R30W			
2806 KB		Structural Relationship			2799 KB		Structural Relationship	
Formation	Log	Sub-Sea	Sample	Log	Log	Sub-Sea	Sample	Log
Chase	2654	151	-3	-5	2658	141	7	5
Winfield	2729	76	-3	1	2726	73	0	4
Towanda	2774	31	0	-4	2773	26	5	1
Ft. Riley	2877	-22	1	1	2822	-23	2	2
Cottonwood	3070	-265	-16	-18	3068	-269	-12	-14
Neva	3151	-346	-5	-2	3148	-349	-2	1
Foraker	3260	-455	-3	-2	3258	-459	1	2
Stotler	3495	-690	-5	-3	3492	-693	-2	0
Tarkio	3568	-763	-8	-4	3568	-769	-2	2
Bern	3663	-858	-11	-9	3666	-867	-2	0
Topeka	3768	-963	-10	-4	3770	-971	-2	4
Lecompton	3935	-1130	-12	-10	3943	-1144	2	4
Heebner	4119	-1314	-11	-9	4122	-1323	-2	0
Lansing	4217	-1412	-11	-10	4219	-1420	-3	-2
Stark	4553	-1748	-16	-13	4568	-1769	5	8
Marmaton	4709	-1904	-15	-15	4720	-1921	2	2
Pawnee	4798	-1993	-14	-13	4811	-2012	5	6
Cherokee	4845	-2040	-15	-11	4854	-2055	0	4
Miss St. Gen.	5085	-2280	-24	-25	5124	-2325	21	20
St. Louis	5184	-2379	-26	-26	5220	-2421	16	16
Warsaw	np				np			
Osage	np				np			
Viola	np				np			
Arbuckle	np				np			
Total Depth	5406	-2601	-14	-14	5507	-2708	93	93

ROCK TYPES

Cht, Cht vari, Chtcong, Dolprim, Dolsec, sdy lms, Lmst fw<7, Lmst fw>7, shale, gry, Carbon Sh, shale, red, Ss

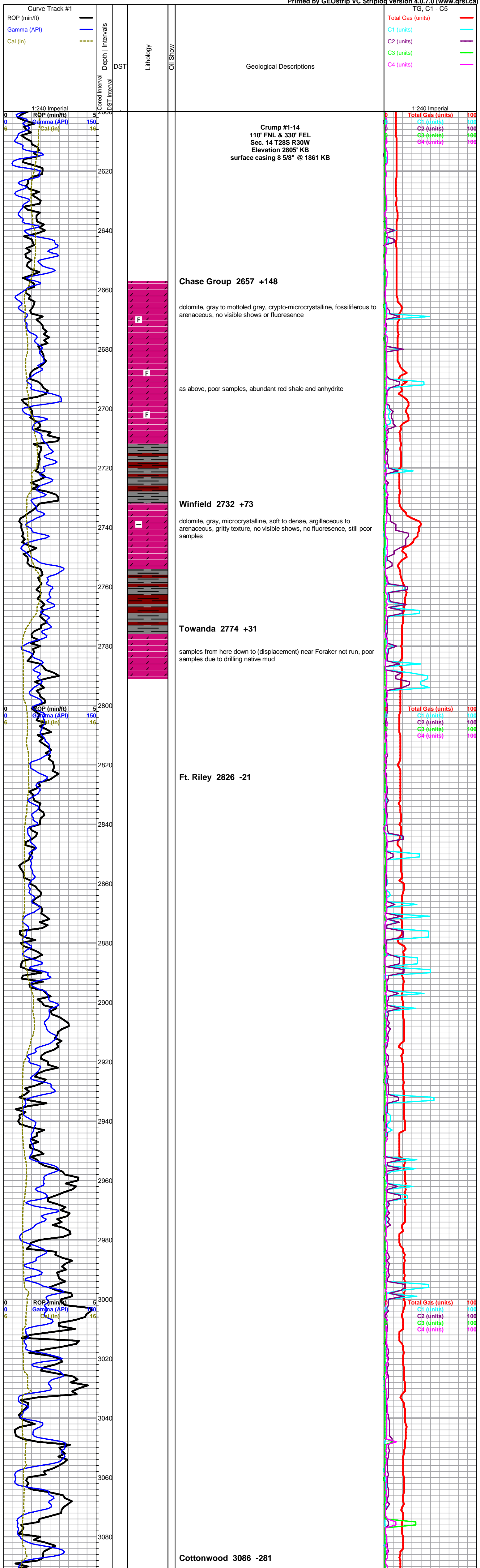
ACCESSORIES

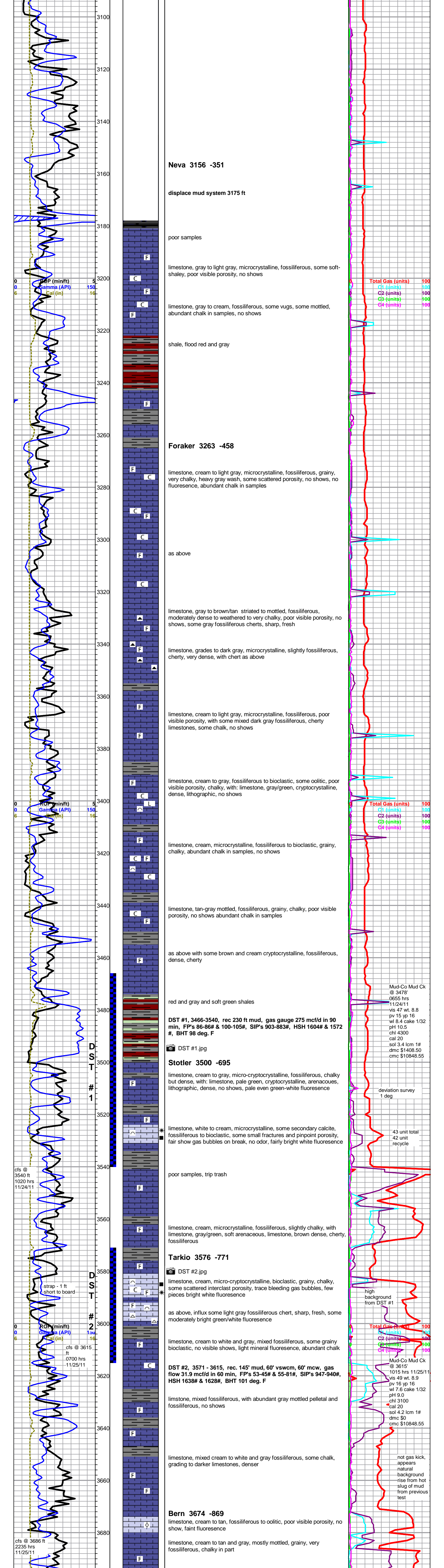
MINERAL
 - Argillaceous
 ▲ Chert, dark
FOSSIL
 ∩ Bryozoa
STRINGER
 - Dolomite
 - Limestone
TEXTURE
 C Chalky
 CX Cryptocrystalline

OTHER SYMBOLS

- | | |
|---------------------|------------|
| MISC | DST |
| Daily Report | DST Int |
| Digital Photo | DST alt |
| Document | Core |
| Folder | tail pipe |
| Link | |
| Vertical Log File | |
| Horizontal Log File | |
| Core Log File | |
| Drill Cuttings Rpt | |

Printed by GEOstrip VC Striplog version 4.0.7.0 (www.grsi.ca)





Neva 3156 -351

displace mud system 3175 ft

poor samples

limestone, gray to light gray, microcrystalline, fossiliferous, some soft-shaley, poor visible porosity, no shows

limestone, gray to cream, fossiliferous, some vugs, some mottled, abundant chalk in samples, no shows

shale, flood red and gray

Foraker 3263 -458

limestone, cream to light gray, microcrystalline, fossiliferous, grainy, very chalky, heavy gray wash, some scattered porosity, no shows, no fluorescence, abundant chalk in samples

as above

limestone, gray to brown/tan striated to mottled, fossiliferous, moderately dense to weathered to very chalky, poor visible porosity, no shows, some gray fossiliferous cherts, sharp, fresh

limestone, grades to dark gray, microcrystalline, slightly fossiliferous, cherty, very dense, with chert as above

limestone, cream to light gray, microcrystalline, fossiliferous, poor visible porosity, with some mixed dark gray fossiliferous, cherty limestones, some chalk, no shows

limestone, cream to gray, fossiliferous to bioclastic, some oolitic, poor visible porosity, chalky, with: limestone, gray/green, cryptocrystalline, dense, lithographic, no shows

limestone, cream, microcrystalline, fossiliferous to bioclastic, grainy, chalky, abundant chalk in samples, no shows

limestone, tan-gray mottled, fossiliferous, grainy, chalky, poor visible porosity, no shows abundant chalk in samples

as above with some brown and cream cryptocrystalline, fossiliferous, dense, cherty

red and gray and soft green shales

DST #1, 3466-3540, rec 230 ft mud, gas gauge 275 mcf/d in 90 min, FP's 86-86# & 100-105#, SIP's 903-883#, HSH 1604# & 1572 #, BHT 98 deg. F

DST #1.jpg

Stotler 3500 -695

limestone, cream to gray, micro-cryptocrystalline, fossiliferous, chalky but dense, with: limestone, pale green, cryptocrystalline, arenaceous, lithographic, dense, no shows, pale even green-white fluorescence

limestone, white to cream, microcrystalline, some secondary calcite, fossiliferous to bioclastic, some small fractures and pinpoint porosity, fair show gas bubbles on break, no odor, fairly bright white fluorescence

poor samples, trip trash

Tarkio 3576 -771

DST #2.jpg

limestone, cream, micro-cryptocrystalline, bioclastic, grainy, chalky, some scattered interclast porosity, trace bleeding gas bubbles, few pieces bright white fluorescence

as above, influx some light gray fossiliferous chert, sharp, fresh, some moderately bright green/white fluorescence

limestone, cream to white and gray, mixed fossiliferous, some grainy bioclastic, no visible shows, light mineral fluorescence, abundant chalk

DST #2, 3571 - 3615, rec. 145' mud, 60' vswcm, 60' mcw, gas flow 31.9 mcf/d in 60 min, FP's 53-45# & 55-81#, SIP's 947-940#, HSH 1638# & 1628#, BHT 101 deg. F

limestone, mixed fossiliferous, with abundant gray mottled pelletal and fossiliferous, no shows

limestone, mixed cream to white and gray fossiliferous, some chalk, grading to darker limestones, denser

Bern 3674 -869

limestone, cream to tan, fossiliferous to oolitic, poor visible porosity, no show, faint fluorescence

limestone, cream to tan and gray, mostly mottled, grainy, very fossiliferous, chalky in part

Total Gas (units)	100
C1 (units)	100
C2 (units)	100
C3 (units)	100
C4 (units)	100

Total Gas (units)	100
C1 (units)	100
C2 (units)	100
C3 (units)	100
C4 (units)	100

Mud-Co Mud Ck @ 3478' 0655 hrs 11/24/11 vis 47 wt. 8.8 pv 15 yp 16 wl 8.4 cake 1/32 pH 10.5 chl 4300 cal 20 sol 3.4 lcm 1# dmc \$1408.50 cmc \$10848.55

deviation survey 1 deg
43 unit total
42 unit recycle

Total Gas (units)	100
C1 (units)	100
C2 (units)	100
C3 (units)	100
C4 (units)	100

Mud-Co Mud Ck @ 3615' 1015 hrs 11/25/11 vis 49 wt. 8.9 pv 16 yp 16 wl 7.6 cake 1/32 pH 9.0 chl 3100 cal 20 sol 4.2 lcm 1# dmc \$0 cmc \$10848.55

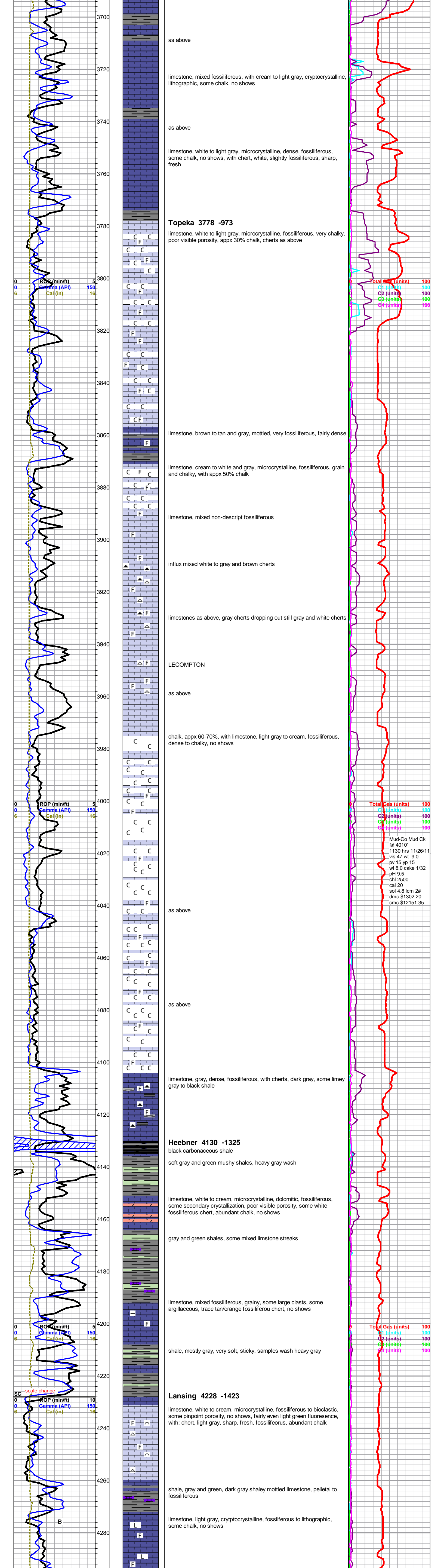
not gas kick, appears natural background rise from hot slug of mud from previous test

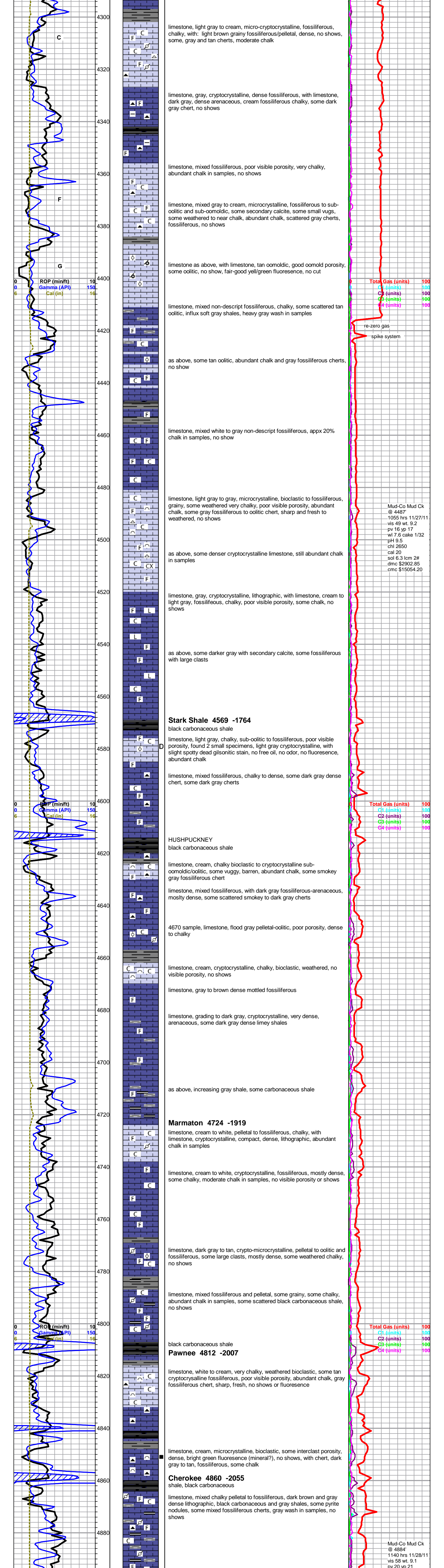
cfs @ 3540 ft 1020 hrs 11/24/11

strap - 1 ft short to board

cfs @ 3615 ft 0700 hrs 11/25/11

cfs @ 3686 ft 2235 hrs 11/25/11





limestone, light gray to cream, micro-cryptocrystalline, fossiliferous, chalky, with: light brown grainy fossiliferous/pelletal, dense, no shows, some, gray and tan cherts, moderate chalk

limestone, gray, cryptocrystalline, dense fossiliferous, with limestone, dark gray, dense arenaceous, cream fossiliferous chalky, some dark gray chert, no shows

limestone, mixed fossiliferous, poor visible porosity, very chalky, abundant chalk in samples, no shows

limestone, mixed gray to cream, microcrystalline, fossiliferous to sub-oolitic and sub-oolimoldic, some secondary calcite, some small vugs, some weathered to near chalk, abundant chalk, scattered gray cherts, fossiliferous, no shows

limestone as above, with limestone, tan oomoldic, good oomold porosity, some oolitic, no show, fair-good yell/green fluorescence, no cut

limestone, mixed non-descript fossiliferous, chalky, some scattered tan oolitic, influx soft gray shales, heavy gray wash in samples

as above, some tan oolitic, abundant chalk and gray fossiliferous cherts, no show

limestone, mixed white to gray non-descript fossiliferous, appx 20% chalk in samples, no show

limestone, light gray to gray, microcrystalline, bioclastic to fossiliferous, grainy, some weathered very chalky, poor visible porosity, abundant chalk, some gray fossiliferous to oolitic chert, sharp and fresh to weathered, no shows

as above, some denser cryptocrystalline limestone, still abundant chalk in samples

limestone, gray, cryptocrystalline, lithographic, with limestone, cream to light gray, fossiliferous, chalky, poor visible porosity, some chalk, no shows

as above, some darker gray with secondary calcite, some fossiliferous with large clasts

Stark Shale 4569 -1764

black carbonaceous shale

limestone, light gray, chalky, sub-oolitic to fossiliferous, poor visible porosity, found 2 small specimens, light gray cryptocrystalline, with slight spotty dead gilsonitic stain, no free oil, no odor, no fluorescence, abundant chalk

limestone, mixed fossiliferous, chalky to dense, some dark gray dense chert, some dark gray cherts

HUSHPUCKNEY

black carbonaceous shale

limestone, cream, chalky bioclastic to cryptocrystalline sub-oolimoldic/oolitic, some vuggy, barren, abundant chalk, some smokey gray fossiliferous chert

limestone, mixed fossiliferous, with dark gray fossiliferous-arenaceous, mostly dense, some scattered smokey to dark gray cherts

4670 sample, limestone, flood gray pelletal-oolitic, poor porosity, dense to chalky

limestone, cream, cryptocrystalline, chalky, bioclastic, weathered, no visible porosity, no shows

limestone, gray to brown dense mottled fossiliferous

limestone, grading to dark gray, cryptocrystalline, very dense, arenaceous, some dark gray dense limey shales

as above, increasing gray shale, some carbonaceous shale

Marmaton 4724 -1919

limestone, cream to white, pelletal to fossiliferous, chalky, with limestone, cryptocrystalline, compact, dense, lithographic, abundant chalk in samples

limestone, cream to white, cryptocrystalline, fossiliferous, mostly dense, some chalky, moderate chalk in samples, no visible porosity or shows

limestone, dark gray to tan, crypto-microcrystalline, pelletal to oolitic and fossiliferous, some large clasts, mostly dense, some weathered chalky, no shows

limestone, mixed fossiliferous and pelletal, some grainy, some chalky, abundant chalk in samples, some scattered black carbonaceous shale, no shows

Pawnee 4812 -2007

black carbonaceous shale

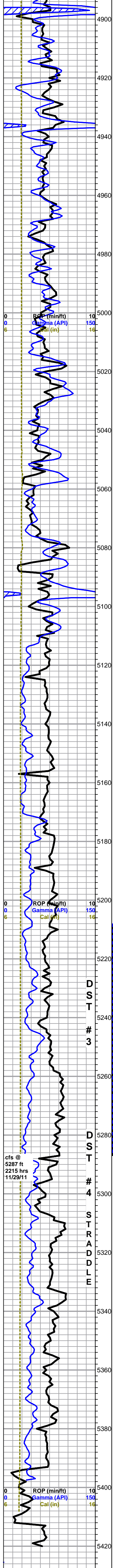
limestone, white to cream, very chalky, weathered bioclastic, some tan cryptocrystalline fossiliferous, poor visible porosity, abundant chalk, gray fossiliferous chert, sharp, no shows or fluorescence

limestone, cream, microcrystalline, bioclastic, some interclast porosity, dense, bright green fluorescence (mineral?), no shows, with chert, dark gray to tan, fossiliferous, some chalk

Cherokee 4860 -2055

shale, black carbonaceous

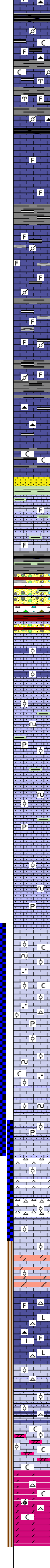
limestone, mixed chalky pelletal to fossiliferous, dark brown and gray dense lithographic, black carbonaceous and gray shales, some pyrite nodules, some mixed fossiliferous cherts, gray wash in samples, no shows



ROP (min/ft)
Gamma (API)
Cal (in)

0 10
6 150
16

cfs @ 5287 ft
2215 hrs
11/29/11



limestones, mixed cream to gray pelletal, cream chalky fossiliferous, tan cryptocrystalline, lithographic to fossiliferous, dense gray fossiliferous, abundant dense blocky carbonaceous shale, mixed cherts

as above, some large cherty bryozoan frags

limestone, light gray, microcrystalline, fossiliferous, dense, no visible porosity, some large fossil imprints, no shows

limestone as above, with streaks shale, black and gray, some brown to gray grainy fossiliferous to pelletal, dense, no shows

limestone, mixed fossiliferous, cherty, with some chalky pelletal to fossiliferous, some large clasts, mixed shales, limy

as above, trace gray spiculitic chert

limestone, black, dark gray, brown mottled, cryptocrystalline, dense, cherty, with black dense limey shales, some scattered cherts

5070 sample - limestone, as above, with some heavily weathered to near chalk, some soft gray shale, samples wash heavy gray, some cream - yellow fossiliferous, large clasts, pyritic

sandstone, green/pale green, very fine grained, shaley, well cemented, poorly sorted, with green sandy shale

5080-5090 samples, limestone, light gray to gray green, very sandy with: limestone, yellow fossiliferous, large clasts, pyritic (as above @ 5050), smooth cryptocrystalline, with green waxy shale

flood shale, gray, green and black, argillaceous to some with organic black plant matter, mostly very soft, heavy gray wash

5110 sample, conglomerate, heavy red wash with flood soft red shale, cherts, limestone and shale as above

Mississippian (St. Gen.) 5109 -2304

limestone, gray to pale green, very sandy, some black to light brown staining, saturated to spotty, no show free oil, no odor, with limestone, brown, oolitic to fossiliferous, very dense, barren, abundant chalk, no fluorescence

sandy limestone as above, decreasing stain, fairly homogeneous, some oolitic, trace pyritic and glauconitic, marked decrease in stain, some waxy green shale

as above, no stain

as above

St. Louis 5210 -2405

limestone, cream to white and light gray, oolitic, mature, chalky, poor visible porosity, trace glauconitic to sandy, no shows or fluorescence, moderate chalk in samples

limestone as above with influx gray to cream cryptocrystalline, flattened oolitic, dense, slightly pyritic and sandy, some light gray oolitic chert, pyritic, no shows or fluorescence

DST #3, 5208' - 5287', rec 30' mud, FP's 74-50# & 71-38#, SIP's 717-184#, HSH 2522# & 2466#, BHT 120 deg. F

DST #3.jpg

as above

limestone, cream, oolitic, fairly mature to flattened, chalky, no visible porosity, some glauconitic and pyritic with: limestone, gray to gray/green, dense, very sandy, sub-oolitic, some pyritic

DST #4 Straddle, 5275' - 5316', rec. 100' wcm 65' smcw 880' vsmcw 60' wcm, chlorides 41,000, FP's 66-78# & 126-483#, BHP's 1536# - 1518#, HSH 2527# - 2491#, BHT 128 deg. F

DST #4.jpg

limestone as above, flood of chert, translucent gray to white, fossiliferous, sharp, fresh, no shows or fluorescence

limestone, mature oolitic as above, limestone, gray, dense, flattened oolitic, glauconitic, chert and sandy limestone drops out, no shows

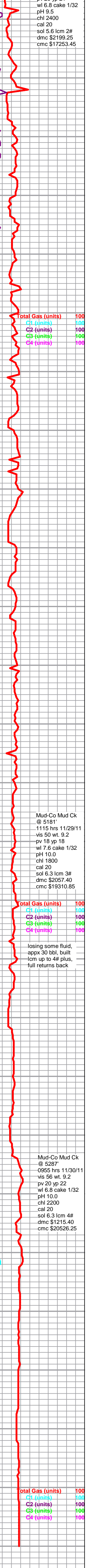
5340 sample, as above, with flood dolomite, gray/green, micro-cryptocrystalline, sub-lithographic, dense, even light green mineral fluorescence

5350 sample, dolomite drops out, limestone, mostly gray, cryptocrystalline, compact dense lithographic, cherty, with limestone, gray to light gray, microcrystalline, sub-oolitic-fossiliferous, dense, with chert, smokey gray to translucent gray, sharp, fresh, no shows or fluorescence

limestone, gray to cream, chalky to dense oolitic to flattened oolitic, with gray-gray/green gritty arenaceous to sandy limestone, dense, some mixed cherts, no shows or fluorescence

limestone, cream to tan and light gray, chalky mature oolitic, with limestone, light gray, microcrystalline, arenaceous and dolomite, light gray, microcrystalline, sub-sucrosic-arenaceous, faint even green mineral fluorescence, abundant chalk, no shows

dolomite, light gray, microcrystalline, subsucrosic, few specimens sub-oolitic, vuggy, some with chert nodules, pale yellow/green fluorescence, with: dolomite, light brown to dark gray, with chert, frosted white to light gray, fossiliferous, abun. chalk



Total Gas (units) 100
C1 (units) 100
C2 (units) 100
C3 (units) 100
C4 (units) 100

wl 6.8 cake 1/32
pH 9.5
chl 2400
cal 20
sol 5.6 lcm 2#
dmc \$2199.25
cmc \$17253.45

Mud-Co Mud Ck @ 5181'
1115 hrs 11/29/11
vis 50 wt. 9.2
pv 18 yp 18
wl 7.6 cake 1/32
pH 10.0
chl 1800
cal 20
sol 6.3 lcm 3#
dmc \$2057.40
cmc \$19310.85

losing some fluid, appx 30 bbl, built 1cm up to 4# plus, full returns back

Mud-Co Mud Ck @ 5287'
0955 hrs 11/30/11
vis 56 wt. 9.2
pv 20 yp 22
wl 6.8 cake 1/32
pH 10.0
chl 2200
cal 20
sol 6.3 lcm 4#
dmc \$1215.40
cmc \$20526.25

Total Gas (units) 100
C1 (units) 100
C2 (units) 100
C3 (units) 100
C4 (units) 100

Rotary TD @ 5420 ft 0625 hrs 12/1/11
Log Tech TD 5420 ft

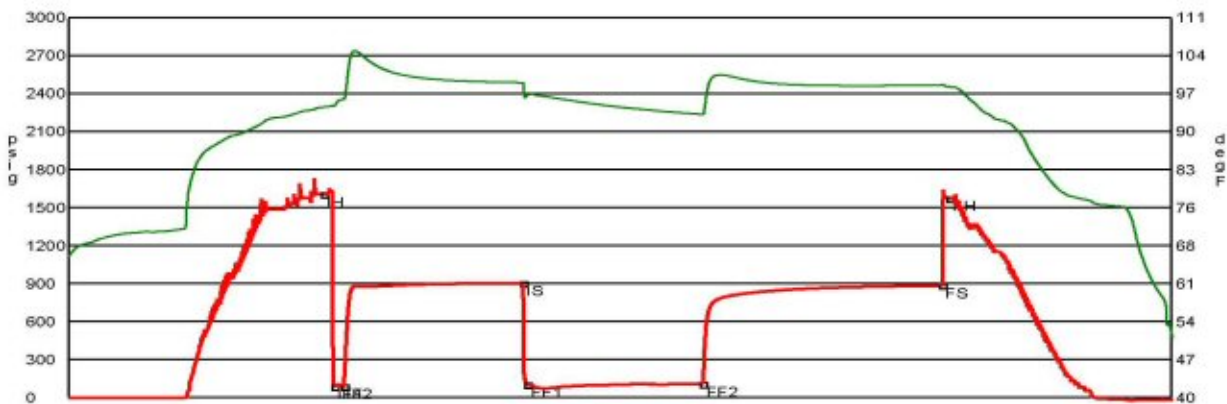
Company	Falcon Exploration, Inc.	Lease Name	Crump (NE)
Address	125 N. Market, Ste. 1252	Lease #	1-14
CSZ	Wichita, KS 67202	Legal Desc	N/2-NE-NE-NE
Attn.	Keith Reavis	Section	14
		Township	28S
		County	Gray
		Drilling Cont	Sterling Drilling Co. Rig #5
Comments	Legal Description Feet: 110' FNL & 330' FEL		
		Job Ticket	2173
		Range	30W
		State	KS

GENERAL INFORMATION

Test # 1	Tester	Test Date	11/25/2011	Chokes	3/4	Hole Size	7 7/8
	Tim Venters			Top Recorder #	W1119		
	Conventional Bottom Hole			Mid Recorder #	W1023		
	Successful Test			Bot Recorder #	13310		
# of Packers	2.0	Packer Size	6 3/4	Mileage	224	Approved By	
Mud Type	Gel Chem	Viscosity	47.0	Standby Time	0		
Mud Weight	8.3	Chlorides	4300	Extra Equipmnt	Jars & Safety joint		
Filtrate	8.4			Time on Site	2:30 PM		
Drill Collar Len	333.0			Tool Picked Up	1:20 PM		
Wght Pipe Len	0			Tool Layed Dwn	1:20 AM		
Formation	Stotler	Bottom	3540.0	Elevation	2792.00	Kelley Bushings	2805.00
Interval Top	3486.0	Between	0	Start Date/Time	11/24/2011 4:15 PM		
Anchor Len Below	74.0			End Date/Time	11/25/2011 1:27 AM		
Total Depth	3540.0						
Blow Type	Fairly strong 2 inch blow at the start of the intial flow period, building, reac hing the bottom of the bucket in 45 seconds. Very strong blow throughout the fi nal flow period, hitting the bottom of the bucket intantaneously. Gas to surfac e, 4 minutes. Weak surface blow back at the start of the final shut-in period, lasting 30-40 minutes. Times: 5, 90, 90, 120.						

RECOVERY

Feet	Description	Gas	Oil	Water	Mud
3210	Gas in pipe	100%3210ft	0% 0ft	0% 0ft	0% 0ft
230	Mud	0% 0ft	0% 0ft	0% 0ft	100%230ft



Date	Time	Pressure	Temp	
11/24/2011 6:21:50 PM	2.113889	1604.44	94.292	Initial Hydro-static
11/24/2011 6:27:10 PM	2.202778	86.997	94.532	Initial Flow (1)
11/24/2011 6:31:50 PM	2.280556	86.676	95.741	Initial Flow (2)
11/24/2011 8:01:40 PM	3.777778	903.113	98.88	Initial Shut-In
11/24/2011 8:03:50 PM	3.813889	100.855	96.512	Final Flow (1)
11/24/2011 9:31:50 PM	5.280556	105.539	92.91	Final Flow (2)
11/24/2011 11:31:30 PM	7.275	883.424	98.388	Final Shut-In
11/24/2011 11:35:10 PM	7.336111	1572.284	98.075	Final Hydro-static

GAS FLOWS

Min Into IFP	Min Into FFP	Gas Flows	Pressure	Choke
0	10	166.00 mcf	18.00 psig	0.50 in
0	20	222.00 mcf	28.00 psig	0.50 in
0	30	237.00 mcf	31.00 psig	0.50 in
0	40	253.00 mcf	34.00 psig	0.50 in
0	50	260.00 mcf	35.00 psig	0.50 in
0	60	265.00 mcf	36.00 psig	0.50 in
0	70	270.00 mcf	37.00 psig	0.50 in
0	80	275.00 mcf	38.00 psig	0.50 in
0	90	275.00 mcf	38.00 psig	0.50 in

Company	Falcon Exploration, Inc.	Lease Name	Crump (NE)
Address	125 N. Market, Ste. 1252	Lease #	1-14
CSZ	Wichita, KS 67202	Legal Desc	N/2-NE-NE-NE
Attn.	Keith Reavis	Section	14
		Township	28S
		County	Gray
		Drilling Cont	Sterling Drilling Co. Rig #5
Comments	Legal Description Feet: 110' FNL & 330' FEL		
		Job Ticket	2173
		Range	30W
		State	KS

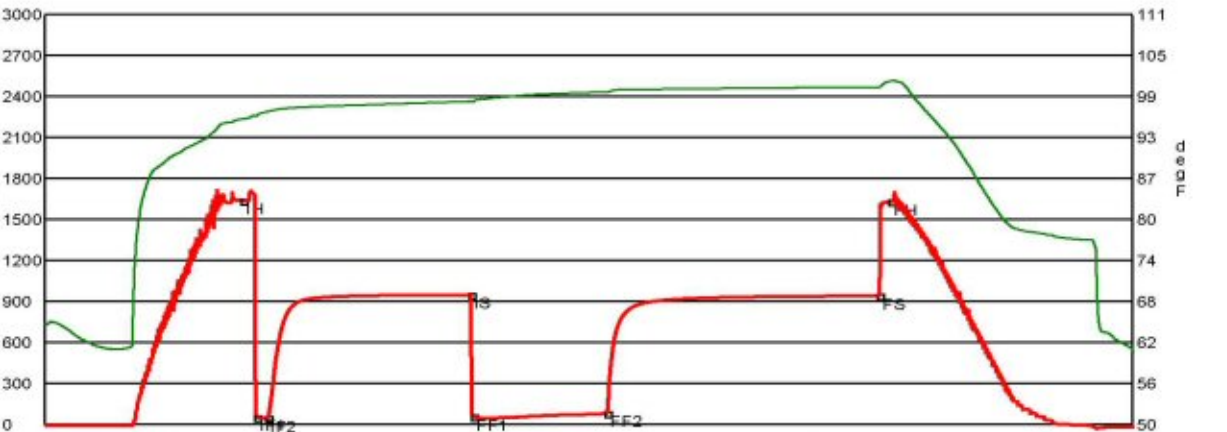
GENERAL INFORMATION

Test # 2	Tester	Test Date	11/25/2011	Chokes	3/4	Hole Size	7 7/8
	Tim Venters			Top Recorder #	W1119		
	Conventional Bottom Hole			Mid Recorder #	W1023		
	Successful Test			Bot Recorder #	13310		
# of Packers	2.0	Packer Size	6 3/4	Mileage	72	Approved By	
Mud Type	Gel Chem	Viscosity	49.0	Standby Time	0		
Mud Weight	9.0	Chlorides	3100	Extra Equipmnt	Jars & Safety joint		
Filtrate	7.6			Time on Site	9:20 AM		
Drill Collar Len	333.0			Tool Picked Up	10:05 AM		
Wght Pipe Len	0			Tool Layed Dwn	5:40 PM		
Formation	Tarkio	Bottom	3615.0	Elevation	2792.00	Kelley Bushings	2805.00
Interval Top	3571.0	Between	0	Start Date/Time	11/25/2011 9:14 AM		
Anchor Len Below	44.0			End Date/Time	11/25/2011 5:13 PM		
Total Depth	3615.0						
Blow Type	Very strong blow throughout the intial flow period, hitting the bottom of the bu cket instantaneously. Weak surface blow at the start of the initial shut-in per iod, lasting 40-50 minutes. Very strong blow throughout the final flow period, hitting the bottom of the bucket instantaneously. Gas to surface in 12 minutes. Times: 3, 90, 60, 120.						

RECOVERY

Feet	Description	Gas	Oil	Water	Mud
3280	Gas in pipe	100%3280ft	0% 0ft	0% 0ft	0% 0ft
145	Mud	0% 0ft	0% 0ft	0% 0ft	100%145ft
60	Very slight water cut mud	0% 0ft	0% 0ft	8% 4.8ft	92% 55.2ft
60	Mud cut water	0% 0ft	0% 0ft	68% 40.8ft	32% 19.2ft

DST Fluids **117000**



Date	Time	Pressure	Temp	
11/25/2011 10:40:40 AM	1.444444	1638.162	95.462	Initial Hydro-static
11/25/2011 10:46:40 AM	1.544444	53.943	95.963	Initial Flow (1)
11/25/2011 10:51:20 AM	1.622222	45.694	96.549	Initial Flow (2)
11/25/2011 12:21:00 PM	3.116667	947.529	98.065	Initial Shut-In
11/25/2011 12:22:10 PM	3.136111	55.51	98.031	Final Flow (1)
11/25/2011 1:21:10 PM	4.119444	81.667	99.451	Final Flow (2)
11/25/2011 3:21:10 PM	6.119444	940.256	100.186	Final Shut-In
11/25/2011 3:26:10 PM	6.202778	1628.484	101.087	Final Hydro-static

GAS FLOWS

Min Into IFP	Min Into FFP	Gas Flows	Pressure	Choke
0	20	25.10 mcf	16.00 h2o	0.50 in
0	30	28.00 mcf	20.00 h2o	0.50 in
0	40	31.60 mcf	25.50 h2o	0.50 in
0	50	31.60 mcf	25.50 h2o	0.50 in
0	60	31.90 mcf	26.00 h2o	0.50 in

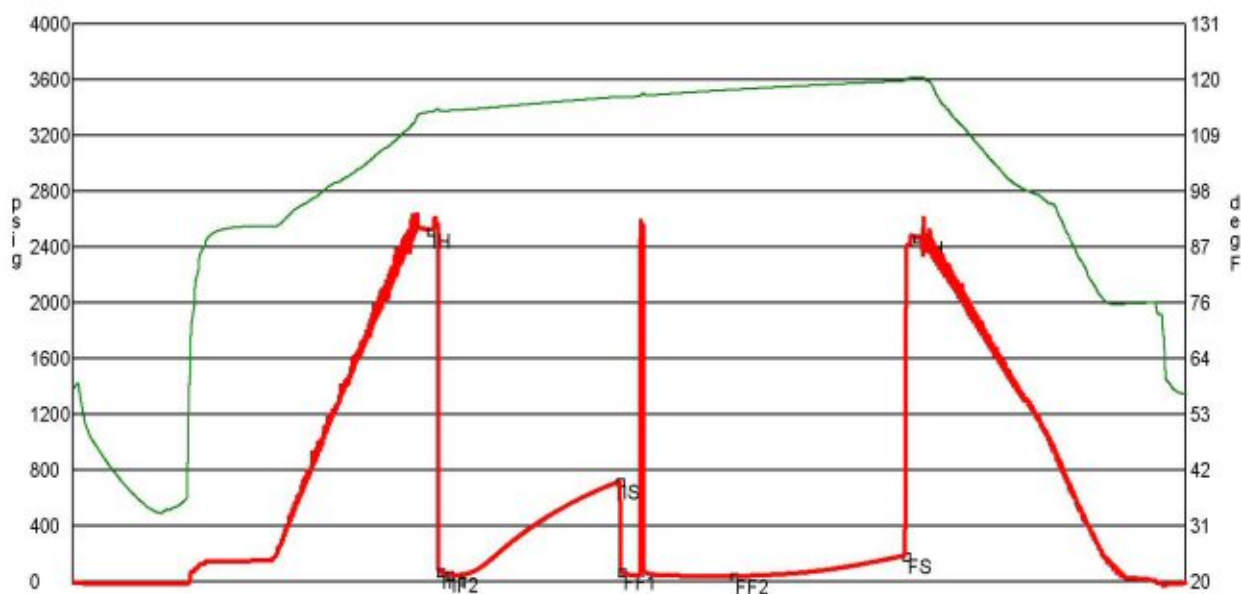
Company	Falcon Exploration, Inc.	Lease Name	Crump (NE)
Address	125 N. Market, Ste. 1252	Lease #	1-14
CSZ	Wichita, KS 67202	Legal Desc	N/2-NE-NE-NE
Attn.	Keith Reavis	Section	14
		Township	28S
		County	Gray
		Drilling Cont	Sterling Drilling Co. Rig #5
Comments	Legal Description Feet: 110' FNL & 330' FEL		
		Job Ticket	2173
		Range	30W
		State	KS

GENERAL INFORMATION

Test #	3	Test Date	11/30/2011	Chokes	3/4	Hole Size	7 7/8
Tester	Tim Venters			Top Recorder #	W1119		
Test Type	Conventional Bottom Hole			Mid Recorder #	W1023		
	Successful Test			Bot Recorder #	13310		
# of Packers	2.0	Packer Size	6 3/4	Mileage	72	Approved By	
Mud Type	Gel Chem			Standby Time	40		
Mud Weight	9.2	Viscosity	56.0	Extra Equipmnt	Jars & Safety joint		
Filtrate	6.8	Chlorides	2200	Time on Site	4:45 AM		
Drill Collar Len	333.0			Tool Picked Up	6:25 AM		
Wght Pipe Len	0			Tool Layed Dwn	3:15 PM		
Formation	Mississippian/St. Louis			Elevation	2792.00	Kelley Bushings	2805.00
Interval Top	5208.0	Bottom	5287.0	Start Date/Time	11/30/2011 5:35 AM		
Anchor Len Below	79.0	Between	0	End Date/Time	11/30/2011 3:19 PM		
Total Depth	5287.0						
Blow Type	Weak surface blow at the start of the intial flow period, building to 1/4 inch. Weak surface blow at the start of the final flow period lasting about 5 minutes. We flushed the tool at 10 minutes and got a surface blow lasting 35-40 minutes. Times: 5, 90, 60, 90.						

RECOVERY

Feet	Description	Gas	Oil	Water	Mud
30	Mud	0% 0ft	0% 0ft	0% 0ft	100% 30ft
DST Fluids 0					



	Date	Time	Pressure	Temp	
IH	11/30/2011 8:41:20 AM	3.10556	2522.457	113.42	Initial Hydro-static
IF1	11/30/2011 8:46:30 AM	3.191667	74.512	113.773	Initial Flow (1)
IF2	11/30/2011 8:51:30 AM	3.275	50.202	113.716	Initial Flow (2)
IS	11/30/2011 10:21:10 AM	4.769444	717.118	116.47	Initial Shut-In
FF1	11/30/2011 10:21:50 AM	4.780556	71.824	116.415	Final Flow (1)
FF2	11/30/2011 11:20:40 AM	5.761111	38.611	117.887	Final Flow (2)
FS	11/30/2011 12:51:10 PM	7.269444	184.722	119.654	Final Shut-In
FH	11/30/2011 12:57:10 PM	7.369444	2466.125	120.317	Final Hydro-static

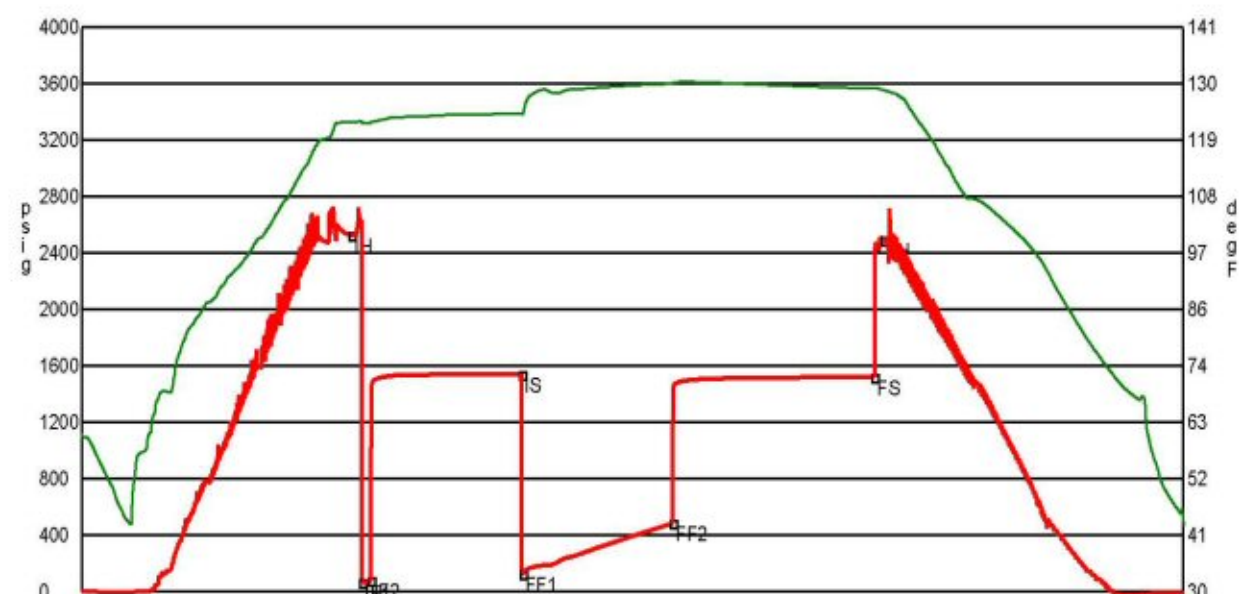
Company	Falcon Exploration, Inc.	Lease Name	Crump (NE)
Address	125 N. Market, Ste. 1252	Lease #	1-14
CSZ	Wichita, KS 67202	Legal Desc	N/2-NE-NE-NE
Attn.	Brian Fischer	Section	14
		Township	28S
		County	Gray
		Drilling Cont	Sterling Drilling Co. Rig #5
Comments	Legal Description Feet: 110' FNL & 330' FEL		
		Job Ticket	2173
		Range	30W
		State	KS

GENERAL INFORMATION

Test #	4	Test Date	12/2/2011	Chokes	3/4	Hole Size	7 7/8
Tester	Tim Venters			Top Recorder #	W1119		
Test Type	Straddle			Mid Recorder #	13310		
	Successful Test			Bot Recorder #	W1023		
# of Packers	3.0	Packer Size	6 3/4	Mileage	72	Approved By	
Mud Type	Gel Chem			Standby Time	0		
Mud Weight	9.2	Viscosity	68.0	Extra Equipmnt	Jars, Safety joint, Extra packer		
Filtrate	7.2	Chlorides	1750	Time on Site	9:55 PM		
Drill Collar Len	303.0			Tool Picked Up	12:15 AM		
Wght Pipe Len	0			Tool Layed Dwn	10:30 AM		
Formation	Mississippian			Elevation	2792.00	Kelley Bushings	2805.00
Interval Top	5275.0	Bottom	5316.0	Start Date/Time	12/1/2011 11:40 PM		
Anchor Len Below	104.0	Between	41.0	End Date/Time	12/2/2011 10:38 AM		
Total Depth	5420.0						
Blow Type	Weak 1/4 inch blow at the start of the intial flow period, building to 3 inches. Weak surface blow at the start of the final flow period, building, reaching the bottom of the bucket in 17 minutes. It never did blow water out of the bucket. Times: 5, 90, 90, 120.						

RECOVERY

Feet	Description	Gas	Oil	Water	Mud
100	Water cut mud	0% 0ft	0% 0ft	20% 20ft	80% 80ft
65	Slight mud cut water	0% 0ft	0% 0ft	83% 54ft	17% 11ft
880	Very slight mud cut water	0% 0ft	0% 0ft	97% 853.6ft	3% 26.4ft
60	Water cut mud	0% 0ft	0% 0ft	27% 16.2ft	73% 43.8ft
DST Fluids 41000					



	Date	Time	Pressure	Temp	
IH	12/2/2011 2:19:40 AM	2.661111	2527.345	122.335	Initial Hydro-static
IF1	12/2/2011 2:26:00 AM	2.766667	66.974	122.215	Initial Flow (1)
IF2	12/2/2011 2:31:00 AM	2.852778	78.515	122.088	Initial Flow (2)
IS	12/2/2011 4:01:00 AM	4.35	1536.668	123.926	Initial Shut-In
FF1	12/2/2011 4:01:30 AM	4.358333	126.329	123.824	Final Flow (1)
FF2	12/2/2011 5:31:00 AM	5.85	483.795	129.815	Final Flow (2)
FS	12/2/2011 7:31:10 AM	7.852778	1518.738	128.874	Final Shut-In
FH	12/2/2011 7:36:40 AM	7.944444	2491.062	128.567	Final Hydro-static