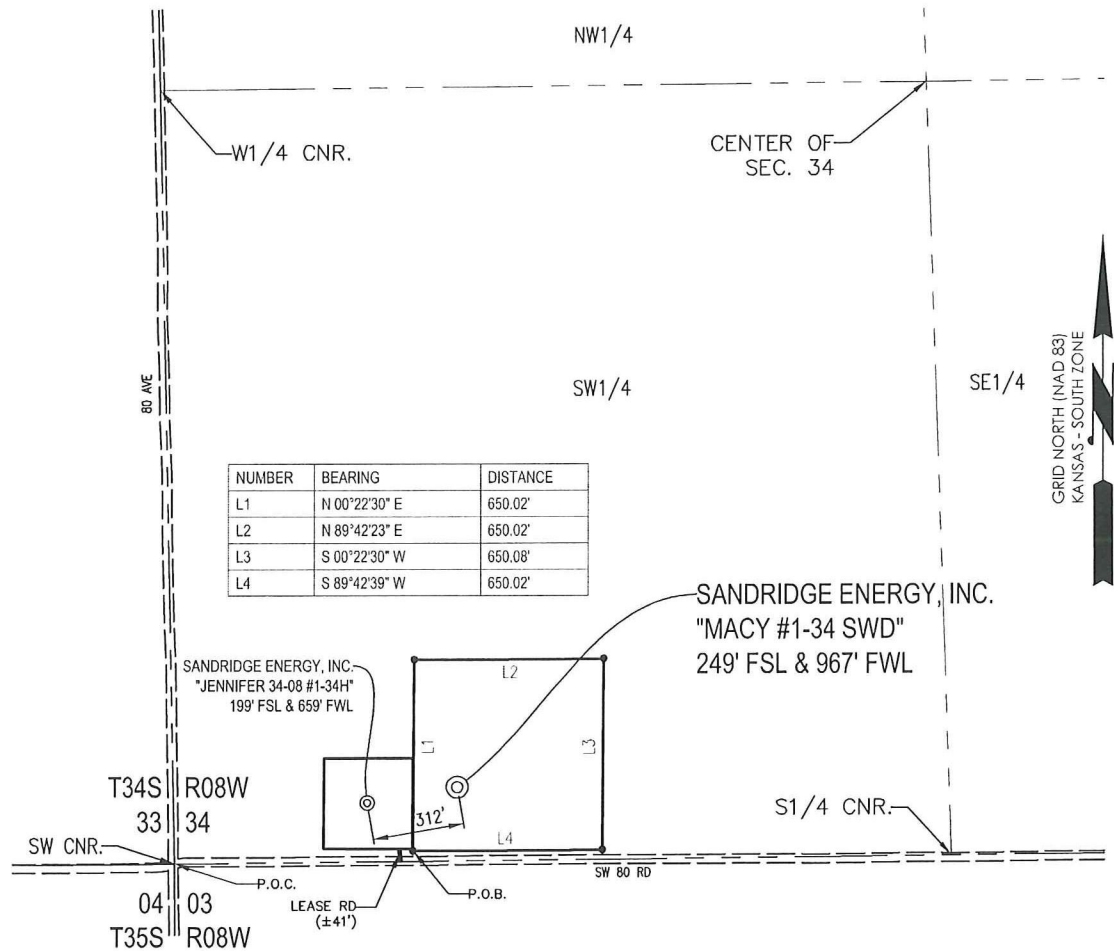




T 34 S - R 08 W



PLAT SHOWING  
**9.70 ACRE TRACT OF LAND IN THE  
 SW 1/4 OF SECTION 34, T34S-R08W,  
 HARPER COUNTY, KANSAS**

**METES AND BOUNDS DESCRIPTION (9.70 ACRE TRACT)**

PART OF THE SW 1/4 OF SECTION 34, TOWNSHIP 34 SOUTH, RANGE 08 WEST, HARPER COUNTY, KANSAS, MORE PARTICULARLY DESCRIBED AS FOLLOWS:

COMMENCING AT THE SW CORNER OF SAID SECTION 34;  
 THENCE N 89°26'32" E ALONG THE SOUTH LINE OF SAID SECTION 34, A DISTANCE OF 811.46 FEET;  
 THENCE N 00°33'28" W, A DISTANCE OF 34.94 FEET TO THE POINT OF BEGINNING;  
 THENCE N 00°22'30" E, A DISTANCE OF 650.02 FEET;  
 THENCE N 89°42'23" E, A DISTANCE OF 650.02 FEET;  
 THENCE S 00°22'30" W, A DISTANCE OF 650.08 FEET;  
 THENCE S 89°42'39" W, A DISTANCE OF 650.02 FEET TO THE POINT OF BEGINNING.

SAID TRACT CONTAINING 9.70 ACRES OF LAND AS SURVEYED.

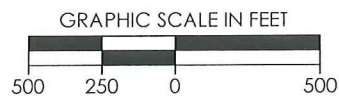
**SURVEYOR'S CERTIFICATE:**

I, C. ED GRAY, KANSAS LICENSED PROFESSIONAL LAND SURVEYOR, NO. 1404, DO HEREBY CERTIFY THAT THIS PLAT REPRESENTS THE RESULTS OF A SURVEY MADE ON THE GROUND UNDER MY SUPERVISION.

9/22/2011

**GENERAL NOTES:**

THE TIES AND FOOTAGES SHOWN ON THIS PLAT ARE FROM LINES OF OCCUPATION FROM A SURVEY MADE ON THE GROUND AND / OR BEARING AND DISTANCES FROM THE GENERAL LAND OFFICE PLAT OF THE AREA SHOWN AND MAY NOT BE THE ACTUAL PROPERTY CORNERS. THIS PLAT DOES NOT REPRESENT A TRUE BOUNDARY SURVEY.



REVISION	<b>SandRidge</b>		
	"MACY #1-34 SWD" PART OF THE SW 1/4 OF SECTION 34, T-34-S, R-08-W PROPOSED DRILL SITE HARPER COUNTY, KANSAS		
	SCALE: 1" = 500'	DRAWN BY: S.ANDER	SHEET NO.: 1 OF 1
	PLOT DATE: 09-22-2011		