



Well File

PAGE 1 of 1	CUST NO 1003965	INVOICE DATE 12/21/2011
INVOICE NUMBER <b>1717 - 90783595</b>		

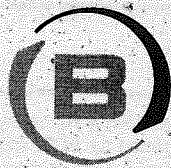
Liberal (620) 624-2277

B STELBAR OIL CORPORATION INC  
 I 1625 N WATERFRONT PKWY STE 200  
 L WICHITA  
 L KS US 67206  
 T  
 O ATTN: ACCOUNTS PAYABLE

J LEASE NAME Cheyenne #1-26  
 O LOCATION  
 B COUNTY Stanton  
 S STATE KS  
 I JOB DESCRIPTION Cement-New Well Casing/Pi  
 T JOB CONTACT  
 E

JOB #	EQUIPMENT #	PURCHASE ORDER NO.	TERMS	DUE DATE
40409430	30463		Net - 30 days	01/20/2012
<b>For Service Dates: 12/19/2011 to 12/19/2011</b>				
0040409430				
171702502A Cement-New Well Casing/Pi 12/19/2011 8 5/8" Surface				
A-Con Blend	400.00	EA	12.00	4,800.02 T
Premium Plus Cement	200.00	EA	10.52	2,103.23 T
Calcium Chloride	1,504.00	EA	0.68	1,018.84 T
Celloflake	151.00	EA	2.39	360.45 T
C-51	76.00	EA	16.13	1,225.81 T
Guide Shoe - Regular - 8 5/8"	1.00	EA	245.16	245.16
Insert Float Valve - 8 5/8"	1.00	EA	180.65	180.65
Econimizer Centralizer - 8 5/8"	4.00	EA	93.55	374.19
Canvas Basket - 8 5/8"	1.00	EA	677.42	677.42
Top Rubber Cement Plug - 8 5/8"	1.00	EA	145.16	145.16
Heavy Equipment Mileage	255.00	MI	4.52	1,151.62
Blending & Mixing Service Charge	600.00	MI	0.90	541.94
Proppant and Bulk Delivery Charge	2,397.00	MI	1.03	2,474.33
Depth Charge; 1001' - 2000'	1.00	EA	967.75	967.75
Plug Container Utilization Charge	1.00	EA	161.29	161.29
Pickup Mileage	85.00	MI	2.74	233.07
Service Supervisor	1.00	HR	112.90	112.90

PLEASE REMIT TO:	SEND OTHER CORRESPONDENCE TO:	SUB TOTAL	16,773.83
BASIC ENERGY SERVICES, LP	BASIC ENERGY SERVICES, LP	TAX	694.11
PO BOX 841903	PO BOX 10460	INVOICE TOTAL	17,467.94
DALLAS, TX 75284-1903	MIDLAND, TX 79702		



**BASIC**<sup>SM</sup>  
ENERGY SERVICES  
PRESSURE PUMPING & WIRELINE

1700 S. Country Estates Rd.  
P.O. Box 129  
Liberal, Kansas 67905  
Phone 620-624-2277

FIELD SERVICE TICKET  
1717 02502 A

DATE \_\_\_\_\_ TICKET NO. \_\_\_\_\_

DATE OF JOB: 12-19-11	DISTRICT: 1717	NEW WELL <input checked="" type="checkbox"/>	OLD WELL <input type="checkbox"/>	PROD <input type="checkbox"/>	INJ <input type="checkbox"/>	WDW <input type="checkbox"/>	CUSTOMER ORDER NO.:		
CUSTOMER: 570610	LEASE: Cheyenne	WELL NO. 121							
ADDRESS:	COUNTY: 570610	STATE: KS							
CITY:	STATE:	SERVICE CREW: [Handwritten]							
AUTHORIZED BY: T. Davis	IRB	JOB TYPE: 292 Surface							
EQUIPMENT#	HRS	EQUIPMENT#	HRS	EQUIPMENT#	HRS	TRUCK CALLED	DATE	AM	TIME
17855	1.5	17858	1.5				12-19	AM	01:00
17856	1.5	17853	1.5				12-19	AM	04:30
17857	1.5						12-19	AM	05:00
17859	1.5						12-19	AM	08:00
17858	1.5						12-19	AM	11:00
						MILES FROM STATION TO WELL	78		

CONTRACT CONDITIONS: (This contract must be signed before the job is commenced or merchandise is delivered).

The undersigned is authorized to execute this contract as an agent of the customer. As such, the undersigned agrees and acknowledges that this contract for services, materials, products, and/or supplies includes all of and only those terms and conditions appearing on the front and back of this document. No additional or substitute terms and/or conditions shall become a part of this contract without the written consent of an officer of Basic Energy Services LP.

SIGNED: [Signature]  
(WELL OWNER, OPERATOR, CONTRACTOR OR AGENT)

ITEM/PRICE REF. NO.	MATERIAL, EQUIPMENT AND SERVICES USED	UNIT	QUANTITY	UNIT PRICE	\$ AMOUNT
0101	Water Blend	SK	400		7440.00
0110	Proprietary Pkg	SK	200		3260.00
0017	Chemical Additive	LB	1504		1579.20
0112	Cellulose	LB	151		553.70
0130	C-51	LB	70		1900.00
CF233	Load shoe	EA	1		380.00
CF413	Lubricant	EA	1		290.00
CF445	Conditioner	EA	4		580.00
CF456	Control Basket	EA	1		1050.00
CF455	Top Plug	EA	1		725.00
0101	Heavy Equip. Mileage	Mi	205		1795.00
0200	Unloading & Moving 5000 Lbs.	SK	600		840.00
203	Bulk Delivery	Ton	2377		3835.20
0202	Depth Plug 1401-2000'	EA	1		150.00
0204	Pro Controller	EA	1		250.00
0100	Pickup Mileage	Mi	85		361.25
5003	Service Supervisor	EA	1		175.00
SUB TOTAL					11993.83

CHEMICAL / ACID DATA:			

SERVICE & EQUIPMENT	%TAX ON \$	
MATERIALS	%TAX ON \$	
TOTAL		

SERVICE REPRESENTATIVE: [Signature]	THE ABOVE MATERIAL AND SERVICE ORDERED BY CUSTOMER AND RECEIVED BY: [Signature]
FIELD SERVICE ORDER NO.:	(WELL OWNER OPERATOR CONTRACTOR OR AGENT)



**BASIC**  
ENERGY SERVICES  
Liberal, Kansas

11-11-11

**Cement Report**

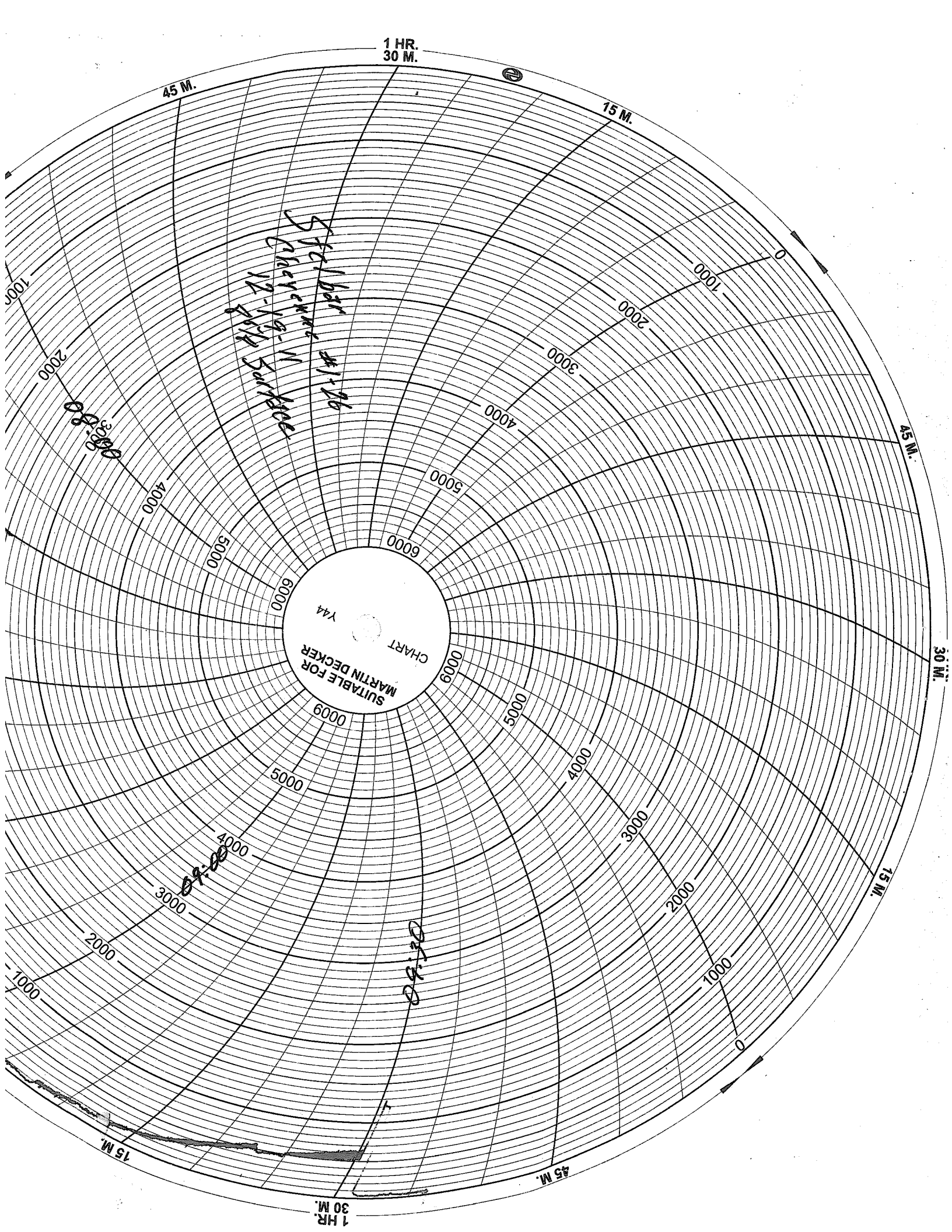
Customer <i>57-11-11</i>	Lease No.	Date <i>12-17-11</i>
Lease <i>Cherokee</i>	Well # <i>1-26</i>	Service Receipt <i>7777-02502</i>
Casing <i>2 7/8</i>	Depth	County <i>Franklin</i>
Job Type <i>2 1/2 surface</i>	Formation	State <i>KS</i>
		Legal Description <i>11-30-11</i>

Pipe Data		Perforating Data		Cement Data
Casing size	Tubing Size	Shots/Ft		Lead
Depth	Depth	From	To	<i>5000/11500</i>
Volume	Volume <i>518</i>	From	To	
Max Press	Max Press	From	To	Tail in
Well Connection	Annulus Vol.	From	To	
Plug Depth	Packer Depth	From	To	

Time	Casing Pressure	Tubing Pressure	Bbls. Pumped	Rate	Service Log
<i>04:30</i>					<i>on loc. / 11-11 Safety Meeting</i>
<i>06:30</i>					<i>Start Csg.</i>
<i>07:40</i>					<i>Csg. on Bottom Cir. w/ Rig</i>
					<i>T.P. 1185 51 43 3 1/2 24"</i>
<i>08:11</i>	<i>250</i>				<i>Test Pump + Lines</i>
<i>08:16</i>	<i>260</i>		<i>810</i>	<i>5.5</i>	<i>Start Lead Cont 400sk @ 11.4"</i>
<i>08:54</i>	<i>360</i>		<i>48</i>	<i>5.5</i>	<i>Start Tail Cont 200sk @ 14.8"</i>
<i>09:00</i>					<i>Shutdown + Drop Plug</i>
<i>09:05</i>	<i>260</i>			<i>3-5</i>	<i>Start Disp w/ Fresh H<sub>2</sub>O</i>
<i>09:23</i>	<i>450</i>		<i>84</i>	<i>2.5</i>	<i>Slow Rate</i>
<i>09:31</i>	<i>1150</i>		<i>104</i>	<i>2.5</i>	<i>Bump Plug</i>
<i>09:32</i>			<i>104</i>	<i>0</i>	<i>Release / Float Hold</i>
<i>09:45</i>					<i>End Job</i>
	<i>550</i>				<i>Pressure Before Plug Loaded</i>
					<i>Circulated Cont to the Pit</i>

Service Units	<i>21755</i>	<i>24915898</i>	<i>115517578</i>	<i>158281783</i>
Driver Names	<i>Cochran</i>	<i>Hammer</i>	<i>J. M. Stone</i>	<i>S. M. Stone</i>

*A. H. ...* Customer Representative      *J. D. ...* Station Manager      *M. Cochran* Cementer



1 HR.  
30 M.

45 M.

15 M.

*Steel bar #1-196  
CNC machine  
1/2 inch Surface*

SUITABLE FOR  
MARTIN DECKER  
CHART  
Y44

15 M.

1 HR.  
30 M.

45 M.

15 M.

30 M.

45 M.

*08:00*

*09:30*

*08:30*

1000

2000

3000

4000

5000

6000

0009

5000

4000

3000

2000

1000

0

1000

2000

3000

4000

5000

1000

2000

3000

4000

5000

6000

0009

5000

4000

3000

2000

1000

0

1000

2000

3000

4000

5000