



**BASIC**<sup>SM</sup>  
ENERGY SERVICES

*Well File*

PAGE 1 of 1	CUST NO 1003965	INVOICE DATE 01/04/2012
INVOICE NUMBER <b>1717 - 90793359</b>		

Liberal (620) 624-2277

B STELBAR OIL CORPORATION INC  
I 1625 N WATERFRONT PKWY STE 200  
L WICHITA  
L KS US 67206

T  
O ATTN: ACCOUNTS PAYABLE

J LEASE NAME Cheyenne #1-26  
O LOCATION  
B COUNTY Stanton  
S STATE KS  
I JOB DESCRIPTION Cement-Plug & Abandonment  
T JOB CONTACT  
E

JOB #	EQUIPMENT #	PURCHASE ORDER NO.		TERMS	DUE DATE
40413597	27462			Net - 30 days	02/03/2012
<i>For Service Dates: 01/01/2012 to 01/01/2012</i>		QTY	U of M	UNIT PRICE	INVOICE AMOUNT
0040413597					
171702506A Cement-Plug & Abandonment 01/01/2012 PTA					
60/40 POZ					
Cement Gel					
Heavy Equipment Mileage					
Blending & Mixing Service Charge					
Proppant and Bulk Delivery Charge					
Depth Charge; 1001' - 2000'					
Pickup Mileage					
Service Supervisor					
		170.00	EA	9.60	1,632.00 T
		294.00	EA	0.20	58.80 T
		170.00	MI	5.60	952.00 T
		170.00	MI	1.12	190.40 T
		624.75	MI	1.28	799.68 T
		1.00	EA	1,200.00	1,200.00 T
		85.00	MI	3.40	289.00 T
		1.00	HR	140.00	140.00 T

PLEASE REMIT TO:

SEND OTHER CORRESPONDENCE TO:

BASIC ENERGY SERVICES, LP  
PO BOX 841903  
DALLAS, TX 75284-1903

BASIC ENERGY SERVICES, LP  
PO BOX 10460  
MIDLAND, TX 79702

SUB TOTAL 5,261.88  
TAX 384.12  
INVOICE TOTAL 5,646.00



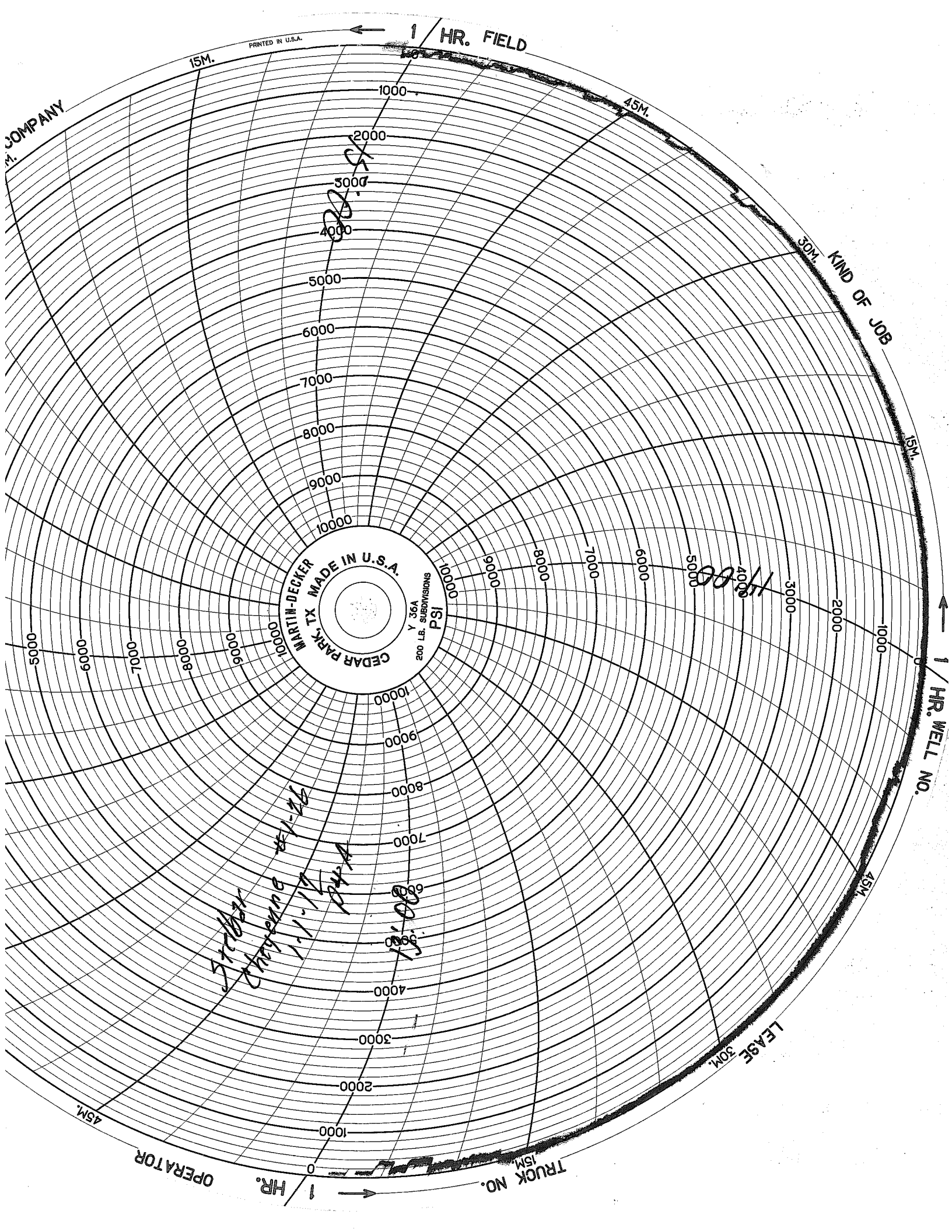


**BASIC**  
ENERGY SERVICES  
Liberal, Kansas

### Cement Report

Customer <i>27412</i>		Lease No.		Date <i>1-1-12</i>	
Lease <i>27412</i>		Well # <i>1-21</i>		Service Receipt <i>1719 02500</i>	
Casing	Depth	County <i>Sevier</i>		State <i>K-</i>	
Job Type <i>244 H/A</i>		Formation		Legal Description <i>26 30 41</i>	
<b>Pipe Data</b>			<b>Perforating Data</b>		<b>Cement Data</b>
Casing size		Tubing Size <i>4 1/2 16.5"</i>		<b>Shots/Ft</b>	
Depth		Depth <i>1710</i>		From	To
Volume		Volume		From	To
Max Press		Max Press		From	To
Well Connection		Annulus Vol.		From	To
Plug Depth		Packer Depth		From	To
Lead		<i>See call sheet</i>			
Tail in					
Time	Casing Pressure	Tubing Pressure	Bbls. Pumped	Rate	Service Log
<i>07:45</i>					<i>cont. c. / H-11 2nd 1/4 Mortar</i>
					<i>Run T.I.H. w/ D.P.</i>
					<i>1st Plug @ 1710' (50 sk)</i>
<i>12:55</i>		<i>280</i>	<i>10</i>	<i>5</i>	<i>Start fresh H<sub>2</sub>O</i>
<i>13:07</i>		<i>2800</i>			<i>Test Pump + Lines</i>
<i>13:09</i>		<i>280</i>	<i>13.7</i>	<i>4</i>	<i>Start Cmt 50 sk @ 13.5"</i>
<i>13:19</i>		<i>280</i>	<i>4</i>	<i>4</i>	<i>Start Disp. w/ fresh H<sub>2</sub>O</i>
<i>13:20</i>		<i>280</i>	<i>3</i>	<i>4</i>	<i>Switch To Mud</i>
<i>13:24</i>		<i>280</i>	<i>20</i>	<i>0</i>	<i>Shutdown &amp; 4" Checkback</i>
					<i>2nd Plug @ 1710' (50 sk)</i>
<i>13:45</i>		<i>280</i>	<i>10</i>	<i>5</i>	<i>Start fresh H<sub>2</sub>O</i>
<i>13:47</i>		<i>280</i>	<i>13.4</i>	<i>4.5</i>	<i>Start Cmt 50 sk @ 13.5"</i>
<i>13:56</i>		<i>280</i>	<i>6</i>	<i>4.5</i>	<i>Start Disp. w/ fresh H<sub>2</sub>O</i>
<i>13:57</i>			<i>7</i>	<i>4.5</i>	<i>Switch To Mud</i>
<i>13:59</i>			<i>5</i>	<i>0</i>	<i>Shutdown &amp; 4" Checkback</i>
					<i>3rd Plug @ 10' (20 sk)</i>
<i>14:31</i>		<i>280</i>	<i>10</i>	<i>4</i>	<i>Start fresh H<sub>2</sub>O</i>
<i>14:33</i>		<i>280</i>	<i>5</i>	<i>4</i>	<i>Start Cmt 50 sk @ 13.5"</i>
<i>14:35</i>			<i>4</i>		<i>Shutdown &amp; 4" Checkback</i>
<i>14:37</i>		<i>280</i>	<i>5</i>	<i>4</i>	<i>Plug Place H<sub>2</sub>O w/ 20 sk @ 13.5"</i>
<i>14:45</i>		<i>280</i>	<i>6</i>	<i>4</i>	<i>Plug Ret. H<sub>2</sub>O w/ 20 sk @ 13.5"</i>
<i>14:51</i>					<i>Wash up to 1st Ret</i>
<i>15:05</i>					<i>Cont Job</i>
Service Units		<i>21755</i>	<i>27412</i>	<i>172277566</i>	
Driver Names		<i>Cocharn</i>	<i>Murphy</i>	<i>Winters</i>	

*Allen* Customer Representative      *J. Bennett* Station Manager      *M. Cocharn* Cementer



PRINTED IN U.S.A.

1 / HR. FIELD

M. COMPANY

30M. KIND OF JOB

15M.

CEDAR PARK TX MADE IN U.S.A.  
Y 36A  
200 LB. SUBDIVISIONS  
PSI

1 / HR. WELL NO.

LEASE 30M.

OPERATOR

TRUCK NO. 15M.

1 / HR.



15.8

11200

27-138  
11.1.11

11.1.11