

**TRILOBITE
TESTING, INC.**

DRILL STEM TEST REPORT

Prepared For: **Stelbar Oil Corp**

1625 N Waterfront Parkway
Wichita, KS 67206

ATTN: Larry Friend

Cheyenne #1-26

26-30s-41w Stanton,KS

Start Date: 2011.12.29 @ 13:35:08

End Date: 2011.12.30 @ 00:21:38

Job Ticket #: 42324 DST #: 1

Trilobite Testing, Inc

PO Box 362 Hays, KS 67601

ph: 785-625-4778 fax: 785-625-5620

ORIGINAL

Printed: 2012.01.05 @ 10:14:47

Stelbar Oil Corp

26-30s-41w Stanton,KS

Cheyenne #1-26

DST # 1

MORROW

2011.12.29



**TRILOBITE
TESTING, INC**

DRILL STEM TEST REPORT

Stelbar Oil Corp
1625 N Waterfront Parkway
Wichita, KS 67206
ATTN: Larry Friend

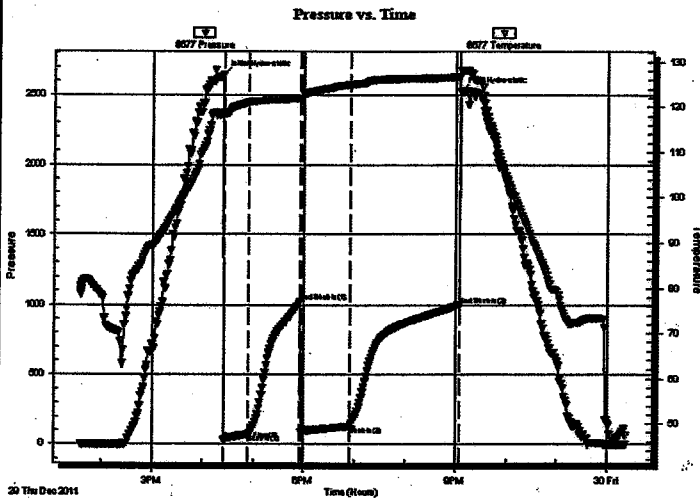
26-30s-41w Stanton, KS
Cheyenne #1-26
Job Ticket: 42324 DST#: 1
Test Start: 2011.12.29 @ 13:35:08

GENERAL INFORMATION:

Formation: **Morrow**
Deviated: **No Whipstock** ft (KB)
Time Tool Opened: 16:25:23
Time Test Ended: 00:21:38
Interval: **5326.00 ft (KB) To 5489.00 ft (KB) (TVD)**
Total Depth: **5489.00 ft (KB) (TVD)**
Hole Diameter: **7.88 inches** Hole Condition: **Good**
Test Type: **Conventional Bottom Hole (Initial)**
Tester: **Mike Slemp**
Unit No: **53**
Reference Elevations: **3401.00 ft (KB)**
3390.00 ft (CF)
KB to GR/CF: **11.00 ft**

Serial #: 8677 **Inside**
Press@RunDepth: **128.31 psig @ 5328.00 ft (KB)** Capacity: **8000.00 psig**
Start Date: **2011.12.29** End Date: **2011.12.30** Last Calib.: **2011.12.30**
Start Time: **13:35:09** End Time: **00:21:38** Time On Btm: **2011.12.29 @ 16:23:53**
Time Off Btm: **2011.12.29 @ 21:05:53**

TEST COMMENT: IF- Weak blow 8 inches in 30 min
IS- No blow back
FF- BOB in 13 min
FS- No blow back



PRESSURE SUMMARY

Time (Min.)	Pressure (psig)	Temp (deg F)	Annotation
0	2640.50	118.66	Initial Hydro-static
2	31.87	118.47	Open To Flow (1)
30	70.74	121.01	Shut-In(1)
92	1023.26	121.86	End Shut-In(1)
93	86.52	121.62	Open To Flow (2)
150	128.31	124.89	Shut-In(2)
281	999.67	126.65	End Shut-In(2)
282	2525.97	128.11	Final Hydro-static

Recovery

Length (ft)	Description	Volume (bbl)
300.00	GIP	1.48
300.00	100% mud Skim of oil	4.18

Gas Rates

	Choke (inches)	Pressure (psig)	Gas Rate (Mcf/d)



**TRILOBITE
TESTING, INC**

DRILL STEM TEST REPORT

TOOL DIAGRAM

Stelbar Oil Corp
1625 N Waterfront Parkway
Wichita, KS 67206

ATTN: Larry Friend

26-30s-41w Stanton, KS
Cheyenne #1-26
Job Ticket: 42324 DST#: 1
Test Start: 2011.12.29 @ 13:35:08

Tool Information

Drill Pipe:	Length: 5015.00 ft	Diameter: 3.80 inches	Volume: 70.35 bbl	Tool Weight: 2000.00 lb
Heavy Wt. Pipe:	Length: 0.00 ft	Diameter: 0.00 inches	Volume: 0.00 bbl	Weight set on Packer: 25000.00 lb
Drill Collar:	Length: 303.00 ft	Diameter: 2.25 inches	Volume: 1.49 bbl	Weight to Pull Loose: 100000.0 lb
		Total Volume:	71.84 bbl	Tool Chased 0.00 ft
Drill Pipe Above KB:	21.00 ft			String Weight: Initial 90000.00 lb
Depth to Top Packer:	5326.00 ft			Final 90000.00 lb
Depth to Bottom Packer:	ft			
Interval between Packers:	163.00 ft			
Tool Length:	192.00 ft			
Number of Packers:	2	Diameter: 6.75 inches		

Tool Comments:

Tool Description	Length (ft)	Serial No.	Position	Depth (ft)	Accum. Lengths
Shut In Tool	5.00			5302.00	
Sampler	3.00			5305.00	
Hydraulic tool	5.00			5310.00	
Jars	5.00			5315.00	
Safety Joint	2.00			5317.00	
Packer	5.00			5322.00	29.00 Bottom Of Top Packer
Packer	4.00			5326.00	
Stubb	1.00			5327.00	
Perforations	1.00			5328.00	
Recorder	0.00	8522	Inside	5328.00	
Recorder	0.00	8677	Inside	5328.00	
Perforations	28.00			5356.00	
Change Over Sub	1.00			5357.00	
Drill Pipe	128.00			5485.00	
Change Over Sub	1.00			5486.00	
Bullnose	3.00			5489.00	163.00 Bottom Packers & Anchor
Total Tool Length:	192.00				



**TRILOBITE
TESTING, INC**

DRILL STEM TEST REPORT

FLUID SUMMARY

Stelbar Oil Corp

26-30s-41w Stanton,KS

1625 N Waterfront Parkway
Wichita, KS 67206

Cheyenne #1-26

Job Ticket: 42324

DST#: 1

ATTN: Larry Friend

Test Start: 2011.12.29 @ 13:35:08

Mud and Cushion Information

Mud Type: Gel Chem

Cushion Type:

Oil API:

deg API

Mud Weight: 9.00 lb/gal

Cushion Length:

ft

Water Salinity:

ppm

Viscosity: 49.00 sec/qt

Cushion Volume:

bbbl

Water Loss: 7.94 in³

Gas Cushion Type:

Resistivity: ohmm

Gas Cushion Pressure:

psig

Salinity: 300.00 ppm

Filter Cake: inches

Recovery Information

Recovery Table

Length ft	Description	Volume bbl
300.00	GIP	1.475
300.00	100% mud Skim of oil	4.181

Total Length: 600.00 ft Total Volume: 5.656 bbl

Num Fluid Samples: 0

Num Gas Bombs: 0

Serial #:

Laboratory Name:

Laboratory Location:

Recovery Comments: Sampler- 900PSI- 4000ml mud skim of oil

DST Test Number: 1

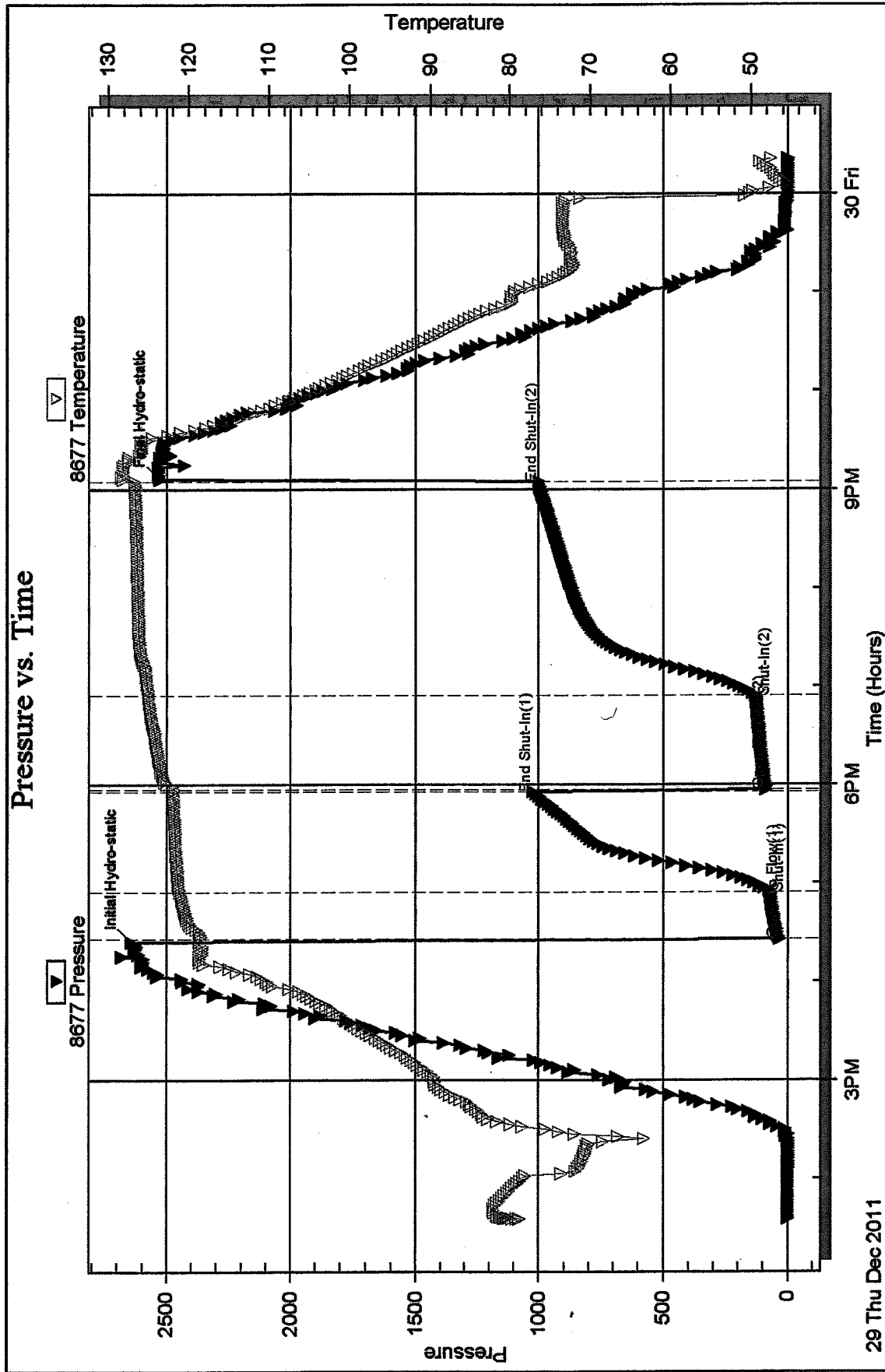
Cheyenne #1-26

Stebar Oil Corp

Inside

Serial #: 8677

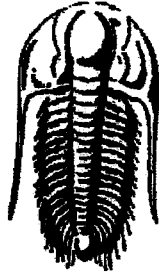
Pressure vs. Time



Printed: 2012.01.05 @ 10:14:49

Ref. No: 42324

Tribbitt Testing, Inc



**TRILOBITE
TESTING, INC.**

DRILL STEM TEST REPORT

Prepared For: **Stelbar Oil Corp**

1625 N Waterfront Parkway
Wichita, KS 67206

ATTN: Larry Friend

Cheyenne #1-26

26-30s-41w Stanton,KS

Start Date: 2011.12.31 @ 14:08:15

End Date: 2012.01.01 @ 02:04:30

Job Ticket #: 44914 DST #: 2

Trilobite Testing, Inc

PO Box 362 Hays, KS 67601

ph: 785-625-4778 fax: 785-625-5620

Printed: 2012.01.05 @ 10:18:17

Stelbar Oil Corp

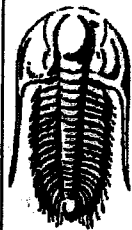
26-30s-41w Stanton,KS

Cheyenne #1-26

DST # 2

Lw. Keys Sand

2011.12.31



TRILOBITE TESTING, INC

DRILL STEM TEST REPORT

Stelbar Oil Corp
 1625 N Waterfront Parkway
 Wichita, KS 67206
 ATTN: Larry Friend

26-30s-41w Stanton, KS

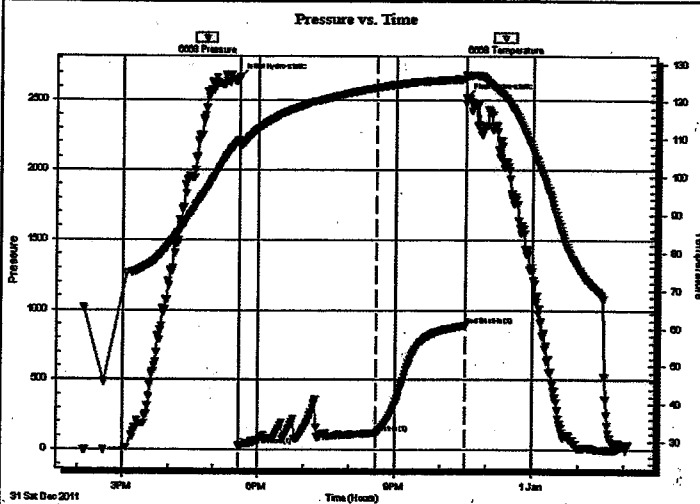
Cheyenne #1-26
 Job Ticket: 44914 DST#: 2
 Test Start: 2011.12.31 @ 14:08:15

GENERAL INFORMATION:

Formation: **Lw. Keys Sand**
 Deviated: **No Whipstock** ft (KB)
 Time Tool Opened: 17:34:30
 Time Test Ended: 02:04:30
 Interval: **5395.00 ft (KB) To 5537.00 ft (KB) (TVD)**
 Total Depth: **5636.00 ft (KB) (TVD)**
 Hole Diameter: **7.88 inches** Hole Condition: **Fair**
 Test Type: **Conventional Straddle (Reset)**
 Tester: **Mike Roberts**
 Unit No: **53**
 Reference Elevations: **3401.00 ft (KB)**
 3390.00 ft (CF)
 KB to GR/CF: 11.00 ft

Serial #: 6668 **Outside**
 Press@RunDepth: **121.23 psig @ 5398.00 ft (KB)**
 Start Date: **2011.12.31** End Date: **2012.01.01**
 Start Time: **14:08:15** End Time: **02:04:30**
 Capacity: **8000.00 psig**
 Last Calib.: **2012.01.01**
 Time On Btm: **2011.12.31 @ 17:34:00**
 Time Off Btm: **2011.12.31 @ 22:32:30**

TEST COMMENT: IF: Built to 7" blow
 IF: No return blow
 FF: PULLED TEST
 FS:



PRESSURE SUMMARY

Time (Min.)	Pressure (psig)	Temp (deg F)	Annotation
0	2659.41	109.86	Initial Hydro-static
1	28.82	108.51	Open To Flow (1)
182	121.23	123.70	Shut-In(1)
298	889.73	126.01	End Shut-In(1)
299	2523.60	126.74	Final Hydro-static

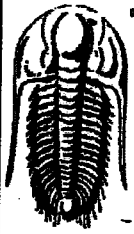
Recovery

Length (ft)	Description	Volume (bbl)
248.00	mud with oil trace 98% m 2% o	1.22

Gas Rates

	Choke (Inches)	Pressure (psig)	Gas Rate (Mcf/d)

* Recovery from multiple tests



**TRILOBITE
TESTING, INC**

DRILL STEM TEST REPORT

TOOL DIAGRAM

Stelbar Oil Corp

26-30s-41w Stanton,KS

1625 N Waterfront Parkway
Wichita, KS 67206

Cheyenne #1-26

Job Ticket: 44914

DST#: 2

ATTN: Larry Friend

Test Start: 2011.12.31 @ 14:08:15

Tool Information

Drill Pipe: Length: 5090.00 ft	Diameter: 3.80 inches	Volume: 71.40 bbl	Tool Weight: 2000.00 lb
Heavy Wt. Pipe: Length: 0.00 ft	Diameter: 0.00 inches	Volume: 0.00 bbl	Weight set on Packer: 25000.00 lb
Drill Collar: Length: 303.00 ft	Diameter: 2.25 inches	Volume: 1.49 bbl	Weight to Pull Loose: 120000.0 lb
			Tool Chased 0.00 ft
			String Weight: Initial 100000.0 lb
			Final 101000.0 lb
Drill Pipe Above KB: 30.00 ft	Total Volume: 72.89 bbl		
Depth to Top Packer: 5395.00 ft			
Depth to Bottom Packer: 5534.00 ft			
Interval between Packers: 139.00 ft			
Tool Length: 273.00 ft			
Number of Packers: 2	Diameter: 6.75 inches		

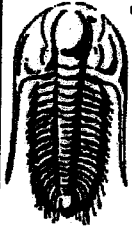
Tool Comments:

Tool Description

Length (ft) Serial No. Position Depth (ft) Accum. Lengths

Change Over Sub	1.00			5364.00		
Shut In Tool	5.00			5369.00		
Sampler	4.00			5373.00		
Hydraulic tool	5.00			5378.00		
Jars	5.00			5383.00		
Safety Joint	3.00			5386.00		
Packer	5.00			5391.00	32.00	Bottom Of Top Packer
Packer	4.00			5395.00		
Stubb	1.00			5396.00		
Perforations	2.00			5398.00		
Recorder	0.00	8358	Inside	5398.00		
Recorder	0.00	6668	Outside	5398.00		
Change Over Sub	1.00			5399.00		
Drill Pipe	128.00			5527.00		
Change Over Sub	1.00			5528.00		
Perforations	5.00			5533.00		
Blank Off Sub	1.00			5534.00	139.00	Tool Interval
Packer	3.00			5537.00		
Stubb	1.00			5538.00		
Perforations	27.00			5565.00		
Change Over Sub	1.00			5566.00		
Recorder	0.00	8646	Below	5566.00		
Drill Pipe	64.00			5630.00		
Change Over Sub	1.00			5631.00		
Bullnose	5.00			5636.00	102.00	Bottom Packers & Anchor

Total Tool Length: 273.00



**TRILOBITE
TESTING, INC**

DRILL STEM TEST REPORT

FLUID SUMMARY

Stelbar Oil Corp
1625 N Waterfront Parkway
Wichita, KS 67206
ATTN: Larry Friend

26-30s-41w Stanton,KS
Cheyenne #1-26
Job Ticket: 44914 **DST#: 2**
Test Start: 2011.12.31 @ 14:08:15

Mud and Cushion Information

Mud Type: Gel Chem	Cushion Type:	Oil API:	0 deg API
Mud Weight: 9.00 lb/gal	Cushion Length: ft	Water Salinity:	0 ppm
Viscosity: 58.00 sec/qt	Cushion Volume: bbl		
Water Loss: 5.18 in ²	Gas Cushion Type:		
Resistivity: 0.00 ohm.m	Gas Cushion Pressure: psig		
Salinity: 500.00 ppm			
Filter Cake: 1.00 inches			

Recovery Information

Recovery Table

Length ft	Description	Volume bbl
248.00	mud with oil trace 98% m 2% o	1.220

Total Length: 248.00 ft Total Volume: 1.220 bbl
Num Fluid Samples: 0 Num Gas Bombs: 0 Serial #:
Laboratory Name: Laboratory Location:
Recovery Comments:

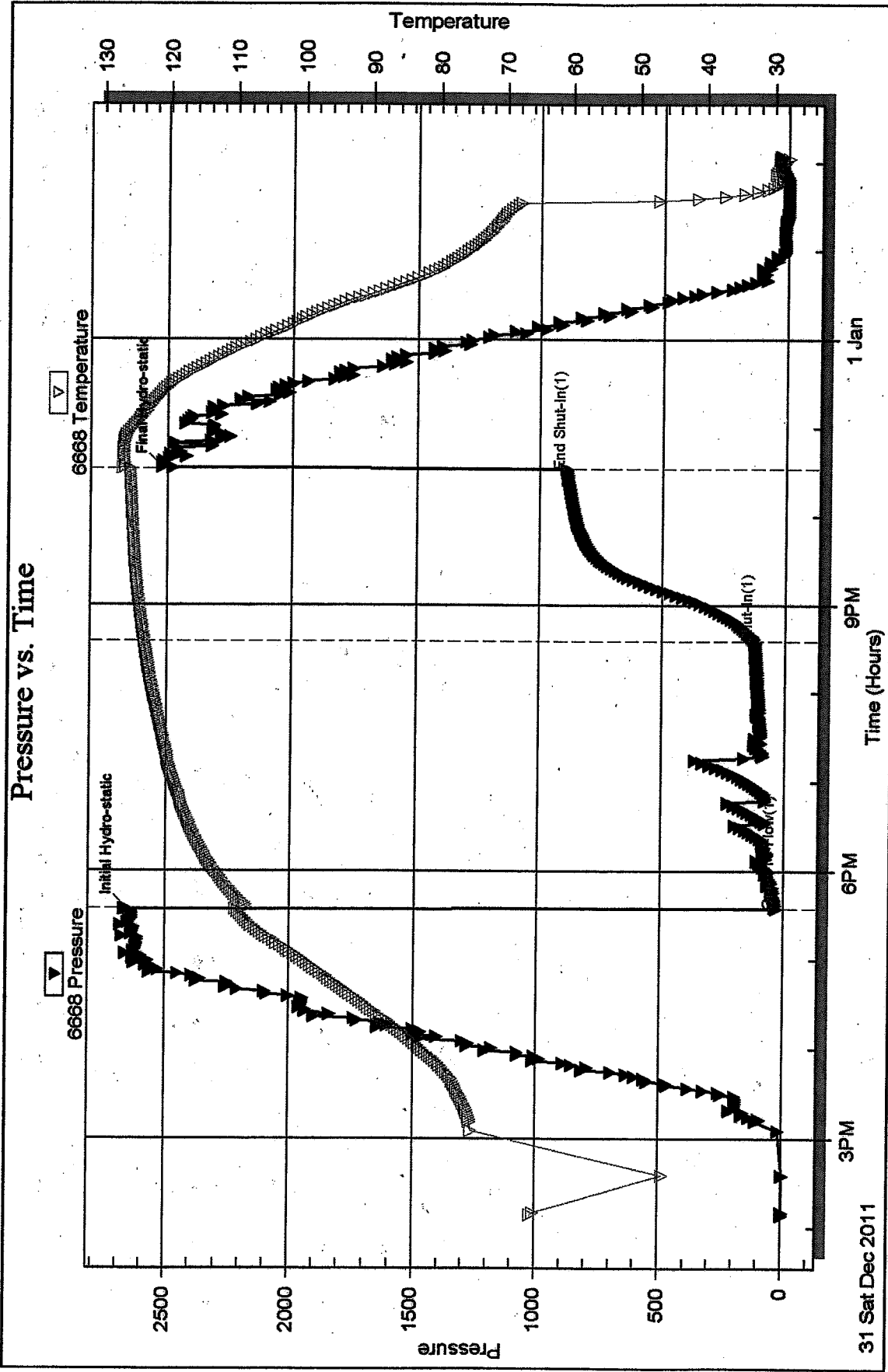
Serial #: 6668

Outside Steibar Oil Corp

Cheyenne #1-26

DST Test Number: 2

Pressure vs. Time

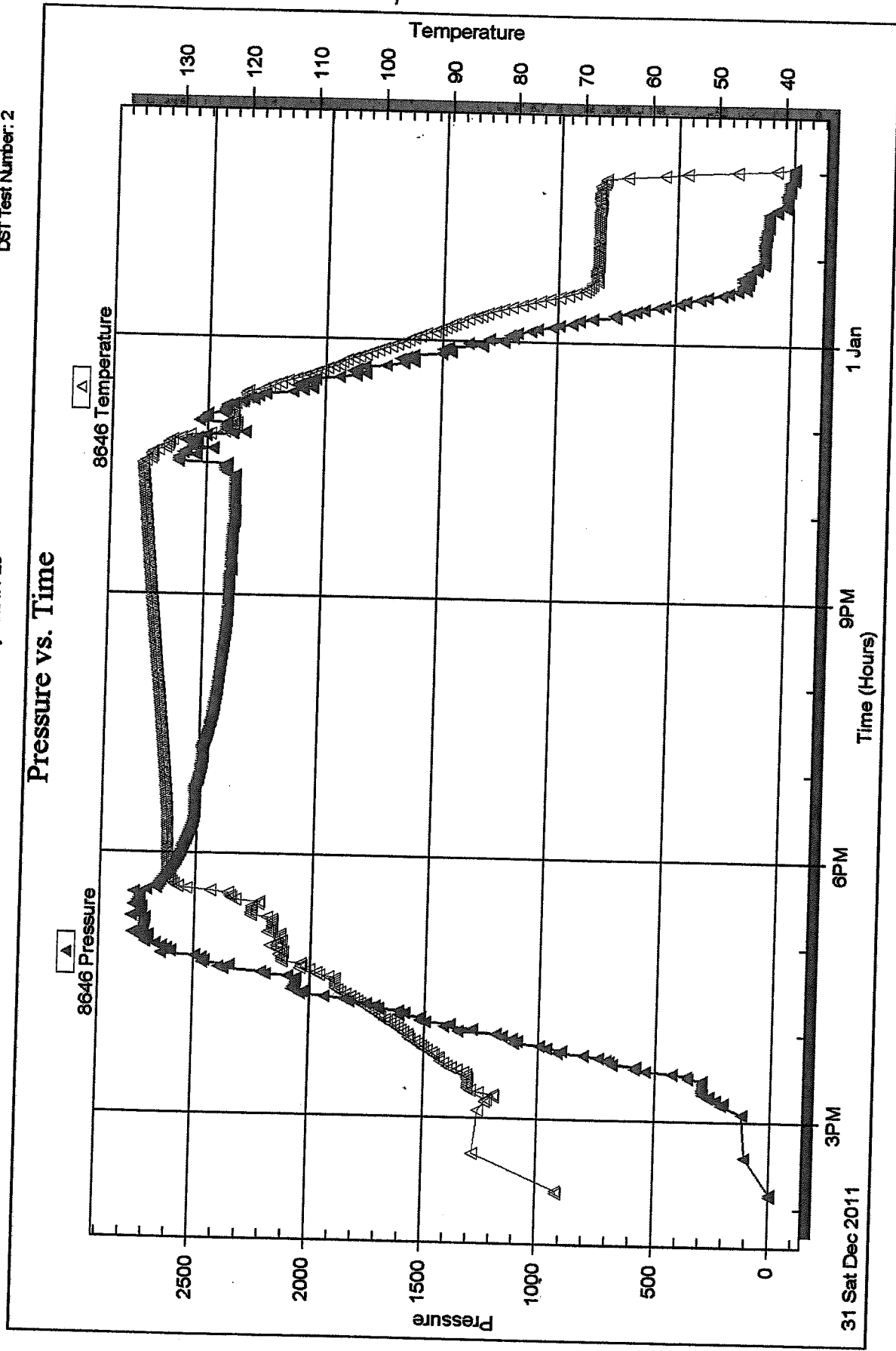


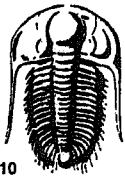
Serial #: 8646

Below (Stratfield) Oil Corp

Cheyenne #1-26

DST Test Number: 2





TRILOBITE TESTING INC.

P.O. Box 1733 • Hays, Kansas 67601

RECEIVED
JAN 03 2012

Test Ticket

No. 042324

BY: _____

Well Name & No. Cheyenne #1-26 Test No. 1 Date 12-29-11
 Company Stelbar Oil Corp Elevation 3401 KB 3388 GL
 Address 1625 N. Waterfront Pkwy
 Co. Rep / Geo. Larry Friend Rig Stirling 5
 Location: Sec. 26 Twp. 30s Rge. 4W Co. Stanton State Ks

Interval Tested 5326-5489 Zone Tested Keyes
 Anchor Length 163 Drill Pipe Run 5015.0 Mud Wt. 9.0
 Top Packer Depth 5321 Drill Collars Run 303.0 Vis 49
 Bottom Packer Depth 5326 Wt. Pipe Run 0 WL 8.0
 Total Depth 5489 Chlorides 300 ppm System LCM 16#

Blow Description IF - weak blow 8 inches in 30 min
ISE - NO blow back
FE - BOB in 13 min
FSE - NO blow back

Rec	Feet of	%gas	%oil	%water	%mud
<u>300</u>	<u>Gas in pipe</u>		<u>skin</u>		
<u>300</u>	<u>Mud</u>		skin	<u>100</u>	
Rec	Feet of	%gas	%oil	%water	%mud
Rec	Feet of	%gas	%oil	%water	%mud
Rec	Feet of	%gas	%oil	%water	%mud

Rec Total 600 BHT 126.6 Gravity _____ API RW _____ @ _____ °F Chlorides _____ ppm

(A) Initial Hydrostatic 2640.50 Test 1325.00 T-On Location 1:00pm
 (B) First Initial Flow 31.87 Jars 250.00 T-Started 2:00pm
 (C) First Final Flow 70.74 Safety Joint 75.00 T-Open 4:25pm
 (D) Initial Shut-In 1023.28 Circ Sub _____ T-Pulled 8:55pm
 (E) Second Initial Flow 86.52 Hourly Standby _____ T-Out 12:00 AM
 (F) Second Final Flow 129.31 Mileage 100mi - 140.00 Comments _____
 (G) Final Shut-In 999.67 Sampler 250.00 _____
 (H) Final Hydrostatic 2525.97 Straddle _____ Ruined Shale Packer _____
 Shale Packer _____ Ruined Packer _____
 Extra Packer _____ Extra Copies _____
 Extra Recorder _____
 Day Standby _____
 Accessibility _____

Initial Open 30
 Initial Shut-In 60
 Final Flow 60
 Final Shut-In 100

Sub Total 2040.00
 Total 2040.00
 MP/DST Disc't _____

Approved By Larry Friend Our Representative MS Rep

Trilobite Testing Inc. shall not be liable for damaged of any kind of the property or personnel of the one for whom a test is made, or for any loss suffered or sustained, directly or indirectly, through the use of its equipment, or its statements or opinion concerning the results of any test, tools lost or damaged in the hole shall be paid for at cost by the party for whom the test is made.



TRILOBITE TESTING, INC.

P.O. Box 362 • Hays, Kansas 67601

FLUID SAMPLER DATA

Ticket No. 40324 Date 12-29-11
 Company Name Stellar Oil Corp
 Lease Cheyenne #1-26 Test No. 1
 County Stanton Sec. 26 Twp. 30s Rng. 41w

SAMPLER RECOVERY

PIT MUD ANALYSIS

Gas <u>0</u> ML	Chlorides <u>300</u> ppm.
Oil <u>Skim</u> ML	Resistivity _____ ohms @ _____ F
Mud <u>4000</u> ML	Viscosity <u>49</u>
Water <u>0</u> ML	Mud Weight <u>90</u>
Other <u>0</u> ML	Filtrate <u>8.0</u>
Pressure <u>900 PSI</u> ML	Other <u>CCM 16#</u>
Total <u>4000</u> ML	

SAMPLER ANALYSIS

PIPE RECOVERY

Resistivity _____ ohms @ _____ F
 Chlorides _____ ppm.

TOP
 Resistivity _____ ohms @ _____ F
 Chlorides _____ ppm.

Gravity _____ corrected @60F

MIDDLE
 Resistivity _____ ohms @ _____ F
 Chlorides _____ ppm.

BOTTOM
 Resistivity _____ ohms @ _____ F
 Chlorides _____ ppm.



TRILOBITE TESTING INC.

P.O. Box 1733 • Hays, Kansas 67601

RECEIVED
JAN 04 2012

Test Ticket

8646
Straddle

NO. 44914

BY: _____

Well Name & No. Cheyenne 1-26 Test No. 2 Date 12-31-11
 Company Stelbar Oil Corp Elevation 3388 KB 3401 GL
 Address 1625 N. Waterfront Pkwy Wichita KS 67206
 Co. Rep / Geo. Larry Friend Rig Stirling #5
 Location: Sec. 26 Twp. 30S Rge. 41W Co. Stanton State KS

Interval Tested 5395-5537 Zone Tested AW Keys Sd.
 Anchor Length 142 Drill Pipe Run 5090 Mud Wt. 9.0
 Top Packer Depth 5391 Drill Collars Run 303 Vis 58
 Bottom Packer Depth 5395 Wt. Pipe Run Ø WL 5.2
 Total Depth 5537 - TP 5636 Chlorides 500 ppm System LCM 16

Blow Description IF: Built to 7" Blow
IS: No Return Blow
FF: Pulled Test

Rec	Feet of	%gas	%oil	%water	%mud
<u>248</u>	<u>M with Trace of oil</u>	<u>2</u>		<u>98</u>	
Rec	Feet of	%gas	%oil	%water	%mud
Rec	Feet of	%gas	%oil	%water	%mud
Rec	Feet of	%gas	%oil	%water	%mud
Rec	Feet of	%gas	%oil	%water	%mud

Rec Total 248 BHT 125 Gravity 1 API RW 1 @ 1 ° F Chlorides 1 ppm
 (A) Initial Hydrostatic 2659 Test 1325.00 T-On Location 12:45
 (B) First Initial Flow 28 Jars 250.00 T-Started 14:08
 (C) First Final Flow 121 Safety Joint 75.00 T-Open 17:34
 (D) Initial Shut-In 889 Circ Sub NL T-Pulled 22:34
 (E) Second Initial Flow pulled test Hourly Standby 2 1/4 hrs 225- T-Out 02:04
 (F) Second Final Flow pulled test Mileage 100 RT. 140- Comments _____
 (G) Final Shut-In 2523 Sampler 250.00 _____
 (H) Final Hydrostatic 2523 Straddle 600.00 _____

Initial Open 180 Shale Packer _____ Ruined Shale Packer _____
 Initial Shut-In 120 Extra Packer _____ Ruined Packer _____
 Final Flow pull Extra Recorder _____ Extra Copies _____
 Final Shut-In pull Day Standby _____ Sub Total 150-
 Accessibility 150.00 Total 3015-
 Sub Total 2865- MP/DST Disc't _____

Approved By Larry Friend Our Representative Mike Roberts

Trilobite Testing Inc. shall not be liable for damaged of any kind of the property or personnel of the one for whom a test is made, or for any loss suffered or sustained, directly or indirectly, through the use of its equipment, or its statements or opinion concerning the results of any test, tools lost or damaged in the hole shall be paid for at cost by the party for whom the test is made.



TRILOBITE TESTING, INC.

P.O. Box 362 • Hays, Kansas 67601

FLUID SAMPLER DATA

Ticket No. 44914 Date 12-31-11
 Company Name Stelbar Oil Comp
 Lease Clayenwe 1-26 Test No. 2
 County Stanbur Sec. 26 Twp. 30S Rng. 4/W

SAMPLER RECOVERY

PIT MUD ANALYSIS

Gas <u>∅</u>	ML	Chlorides <u>500</u>	ppm.
Oil <u>2</u>	ML	Resistivity <u>∅</u>	ohms @ _____ F
Mud <u>48</u>	ML	Viscosity <u>58</u>	
Water <u>1</u>	ML	Mud Weight <u>9.0</u>	
Other <u>1</u>	ML	Filtrate <u>5.2</u>	
Pressure <u>NA</u>	ML	^{LCM} Other <u>16</u>	
Total <u>50</u>	ML		

SAMPLER ANALYSIS

PIPE RECOVERY

Resistivity _____ ohms @ _____ F	TOP
Chlorides _____ ppm.	Resistivity _____ ohms @ _____ F
	Chlorides _____ ppm.
Gravity _____ corrected @ 60F	MIDDLE
	Resistivity _____ ohms @ _____ F
	Chlorides _____ ppm.
	BOTTOM
	Resistivity _____ ohms @ _____ F
	Chlorides _____ ppm.