

GEOLOGICAL LOG

WellSight Systems

Scale 1:240 (5"=100') Imperial
Measured Depth Log

Well Name: CHEYENNE 1-26
Location: SEC. 26 - T30S - R41W
License Number: API: 15-187-21202
Spud Date: 12/17/2011
Surface Coordinates: 335' FSL & 2050 FEL
70' W & 5' N, S/2 - SW - SE
Region: STANTON CO, KS
Drilling Completed: 12/31/2011
Bottom Hole Coordinates:
Ground Elevation (ft): 3388 K.B. Elevation (ft): 3401
Logged Interval (ft): 2100 To: TD Total Depth (ft): 5635
Formation: MISSISSIPPIAN ST. LOUIS AT TD
Type of Drilling Fluid: CHEMICAL - MUD-CO

Printed by WellSight Log Viewer from WellSight Systems 1-800-447-1534 www.WellSight.com

OPERATOR

Company: STELBAR OIL CORP., INC.
Address: 1625 N. WATERFRONT PARKWAY
WICHITA, KS 67206-6602
316-264-8378

GEOLOGIST

Name: LARRY P. FRIEND
Company: CONSULTANT
Address: 1639 BURNS
WICHITA, KS 67203
316-265-2228

DRILLING PROGRESS

12/17/2011: MOVING IN
12/18/2011: 680'
12/19/2011: 1684', WAITING ON BLIZZARD
12/20/2011: 1684', SET SURF. CSG @ 1679.56'
12/21/2011: 2130'
12/22/2011: ?
12/23/2011: 3533, SHUT RIG DOWN FOR CHRISTMAS
12/26/2011: 3533, STARTING RIG BACK UP
12/27/2011: 4180
12/28/2011: 4943, LOST CIRCULATION, 160 BBLS
12/29/2011:
12/30/2011:
12/31/2011: 5635, RETESTING KEYES SAND

FORMATION TOPS

FORMATION TOPS:	SAMPLE	LOG
ATOKA SHALE	4900 (-1499)	4900 (-1499)
MORROW SHALE	5008 (-1607)	5010 (-1609)
MID MORROW SAND	5147 (-1746)	5152 (-1751)
LW MORROW MKR	5307 (-1906)	5310 (-1909)
LW MORROW SAND	5364 (-1963)	5366 (-1965)
LW KEYES SAND	5472 (-2071)	5474 (-2073)
MISSISSIPPIAN (CHESTER)	5501 (-2100)	5490 (-2089)
ST. GENEVIEVE	5520 (-2119)	5521 (-2120)
"ST. LOUIS"	5577 (-2176)	5577 (-2176)

DST's



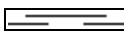

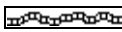

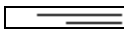
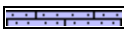
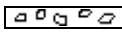

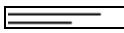

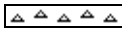



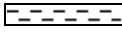




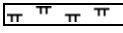






DST #1: 5326-5489, TIMES: 30-60-60-120
IF: BLOW BUILT TO 8"
ISI: NO BLOWBACK
FF: BLOW OFF BTM BUCKET IN 13"
FSI: NO BLOWBACK
REC: 300' GAS IN PIPE,
 300' DRLG MUD W/ SKIM OF OIL ON TOP
 (REC, FLUID TESTED 500 CHLOR, SAME AS MUD)
 SAMPLER CHAMBER: 4000 ML DRLG MUD, SKIM OF **OIL, W/ 900PSI**
IFP: 32-71#, FFP: 87-128#, SIP: 1023-1000#, HP: 2651-2526#
MAX TEMP: 126.6 DEG.

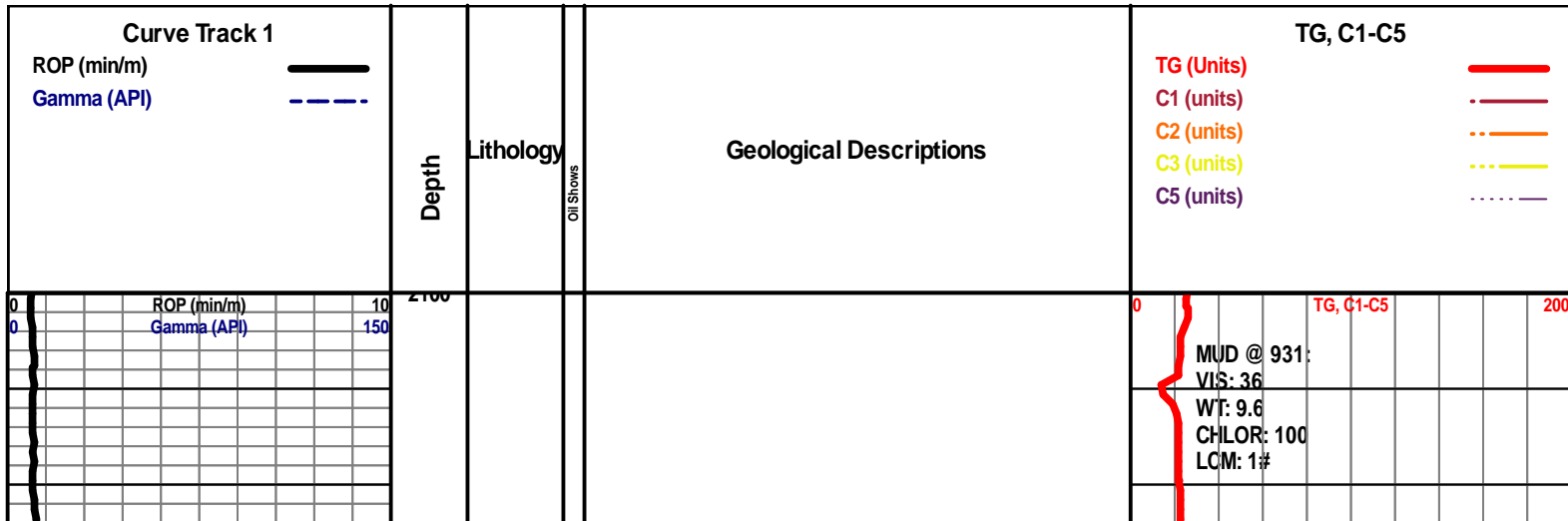
DST #2: 5395-5537 (STRADDLE), TIMES: 180-120

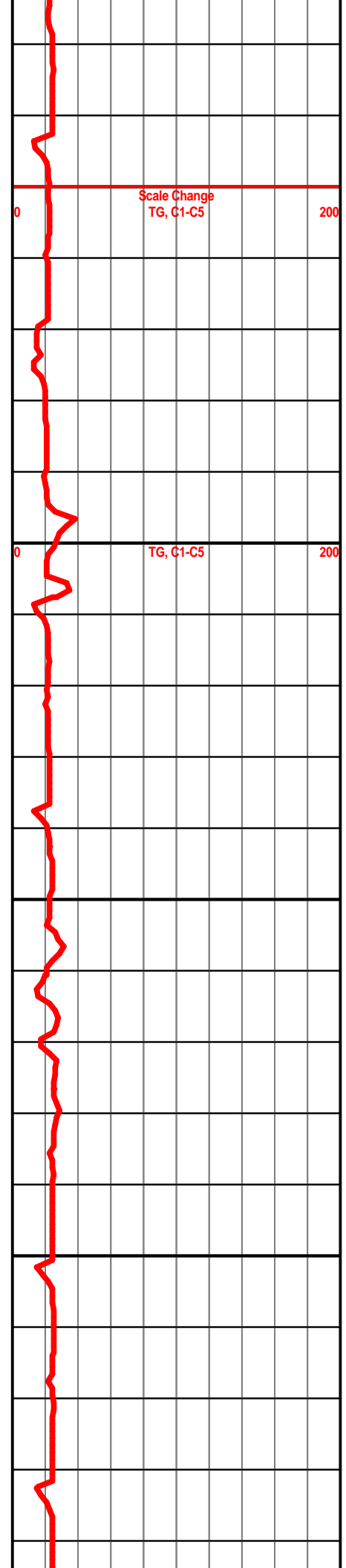
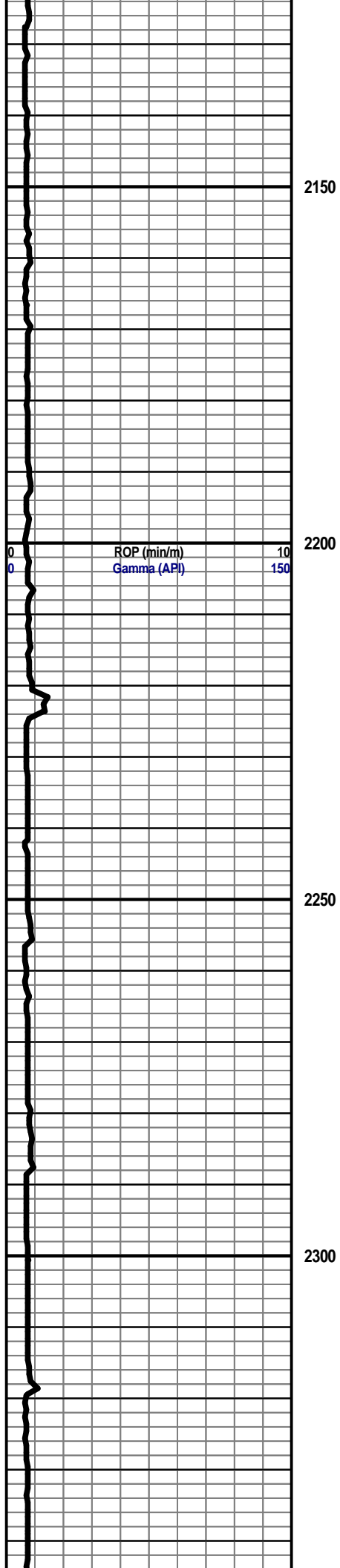
SURVEYS

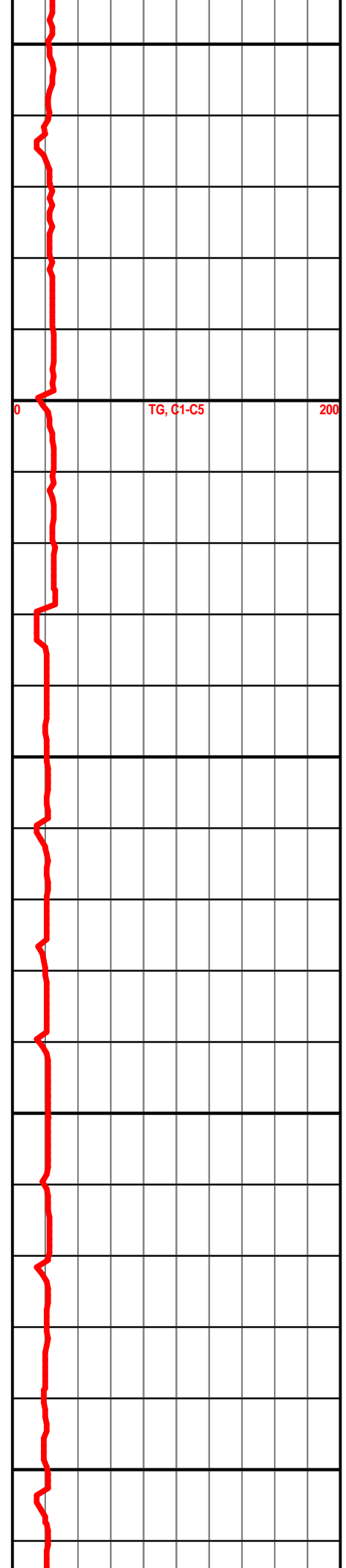
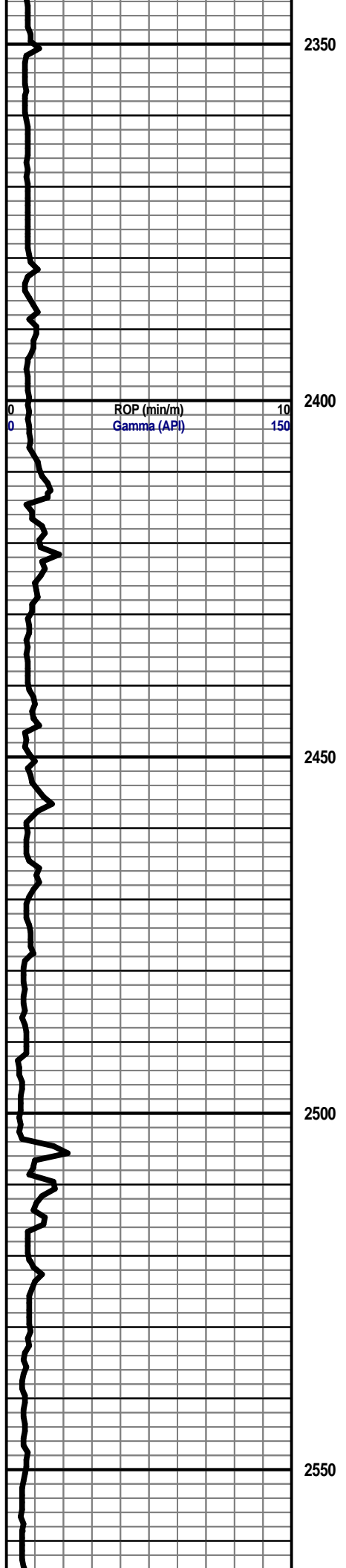
DEVIATION SURVEYS:
1/2 DEGREE @ 1684'
1 DEGREE @ 3533'
1/2 DEGREE @ 5489'

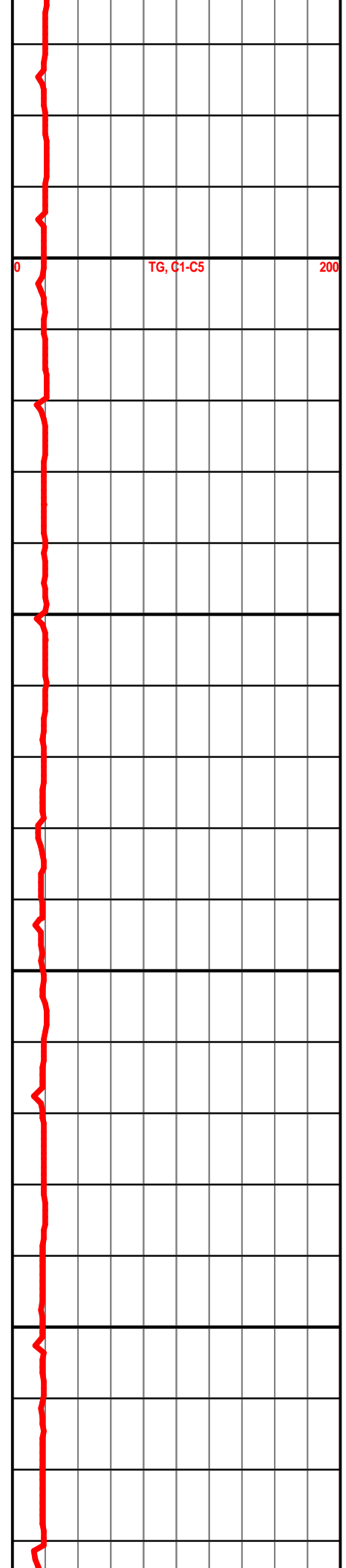
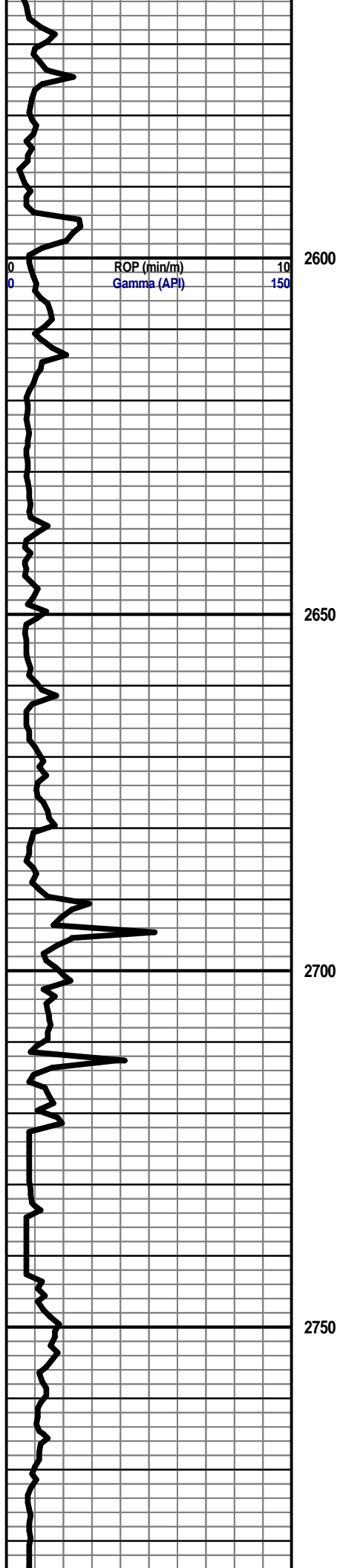
ROCK TYPES

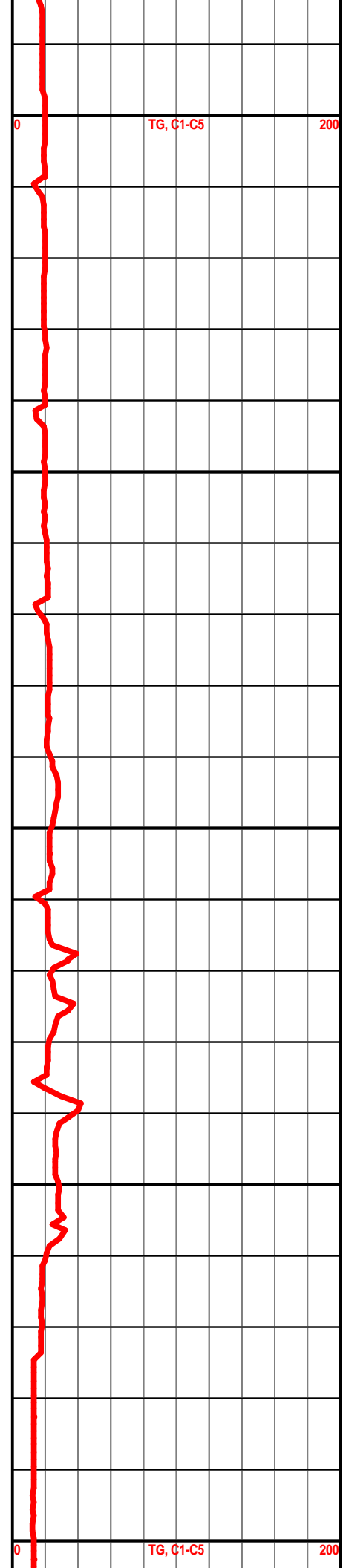
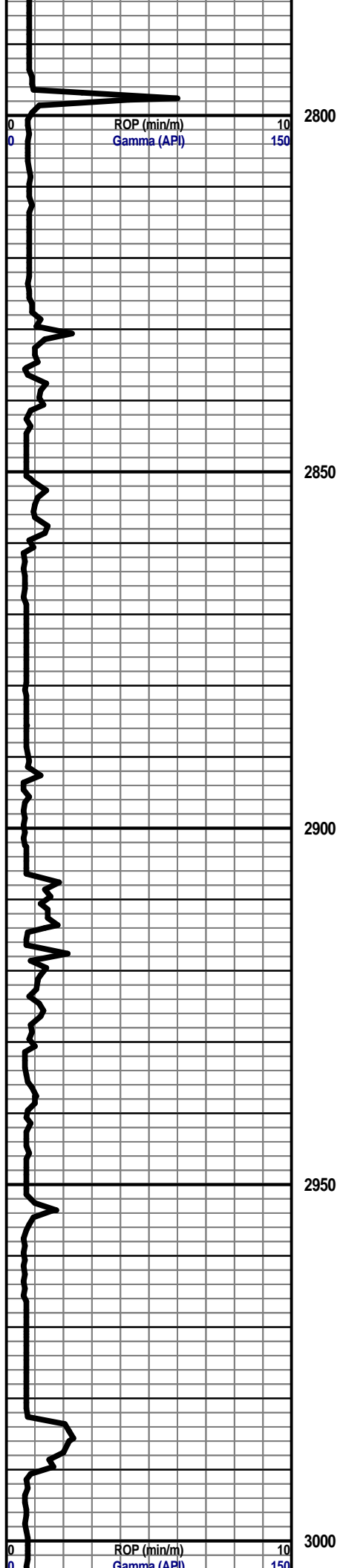
	Anhy		Dol		Shale		Shale
	Bent		Gyp		Shcol		Sandylms
	Brec		Igne		Shgy		Lms
	Cht		Lmst		Slst		Gry sh
	Clyst		Meta		Ss		Dtd
	Coal		Mrlst		Till		Dol
	Congl		Salt		Slstn		Carb sh

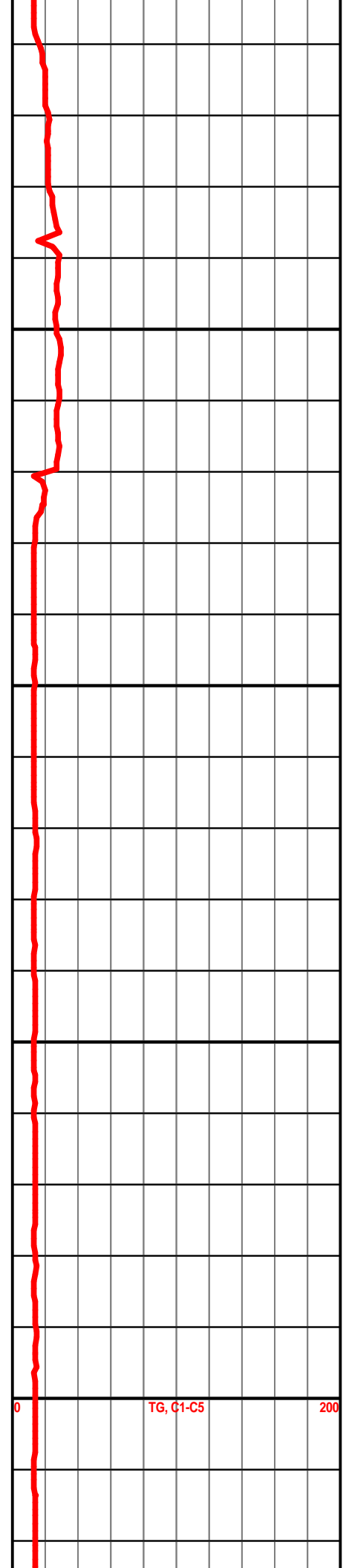
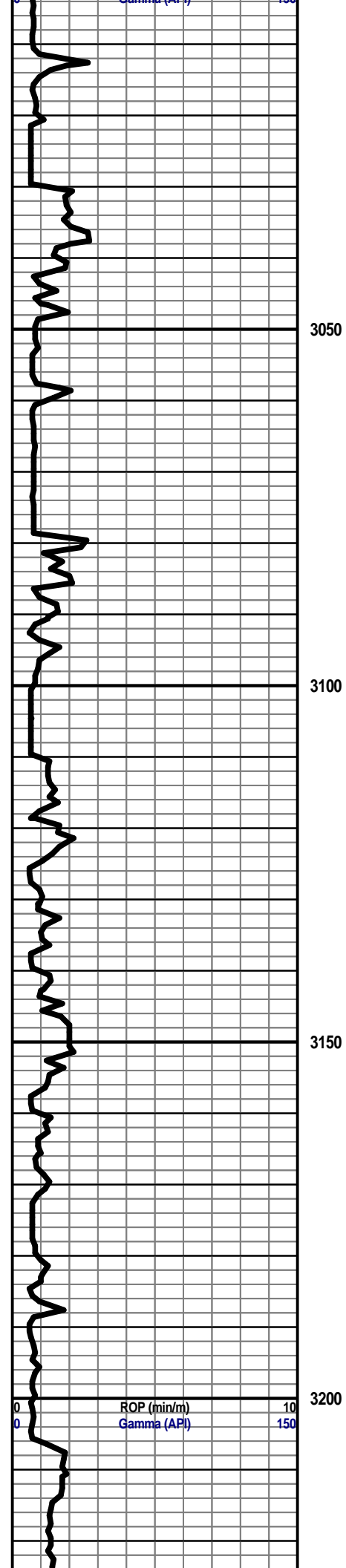


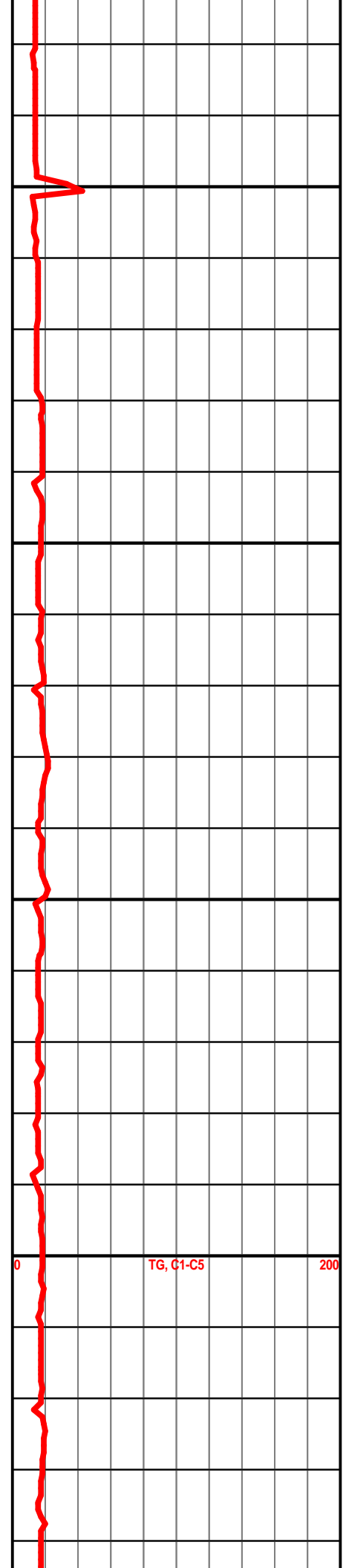
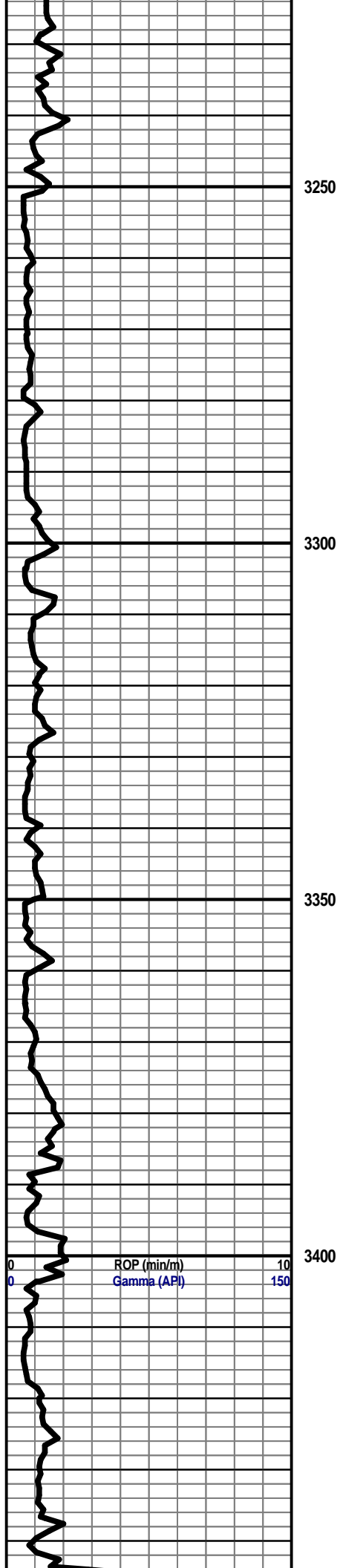


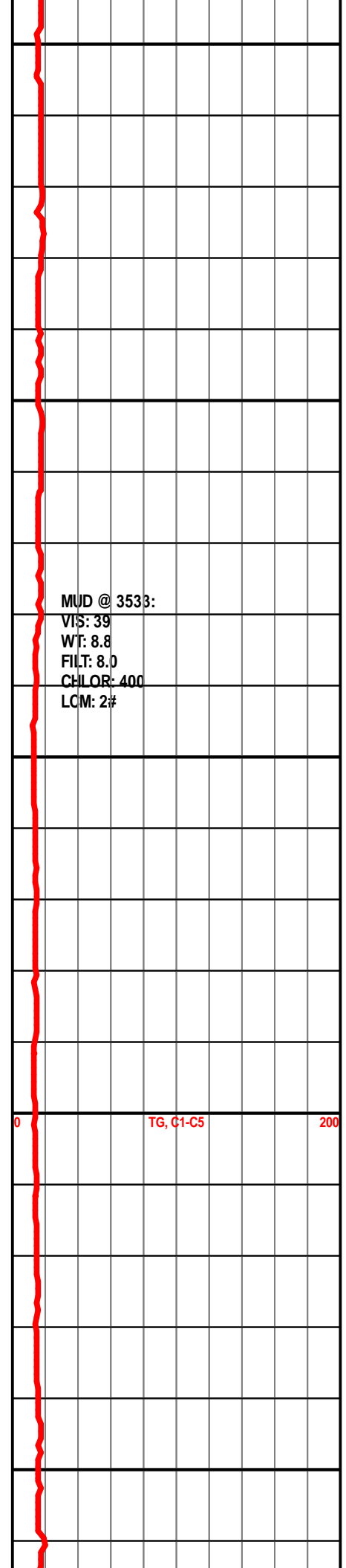
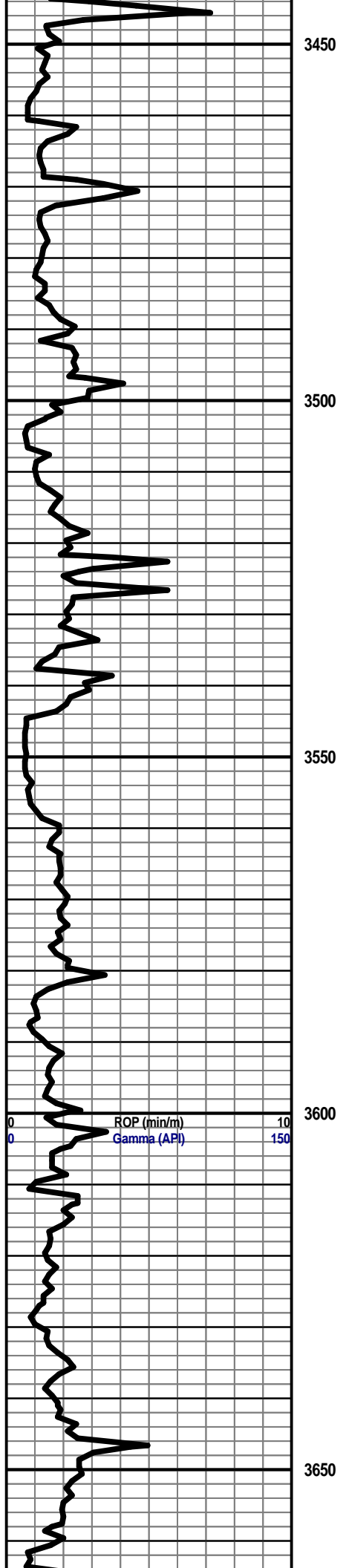






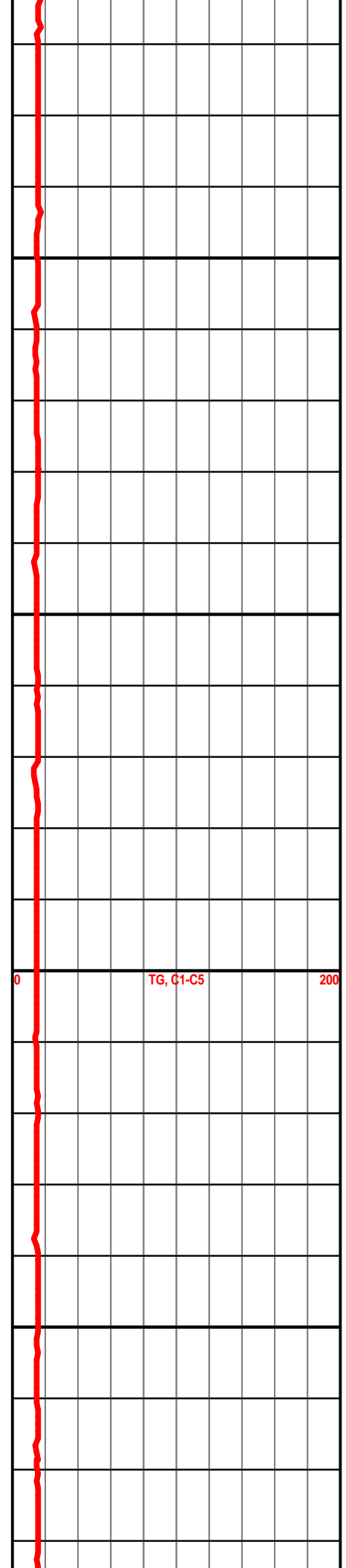
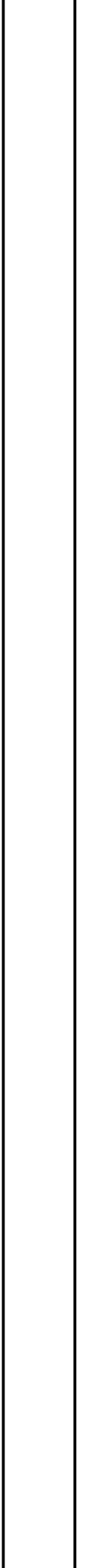
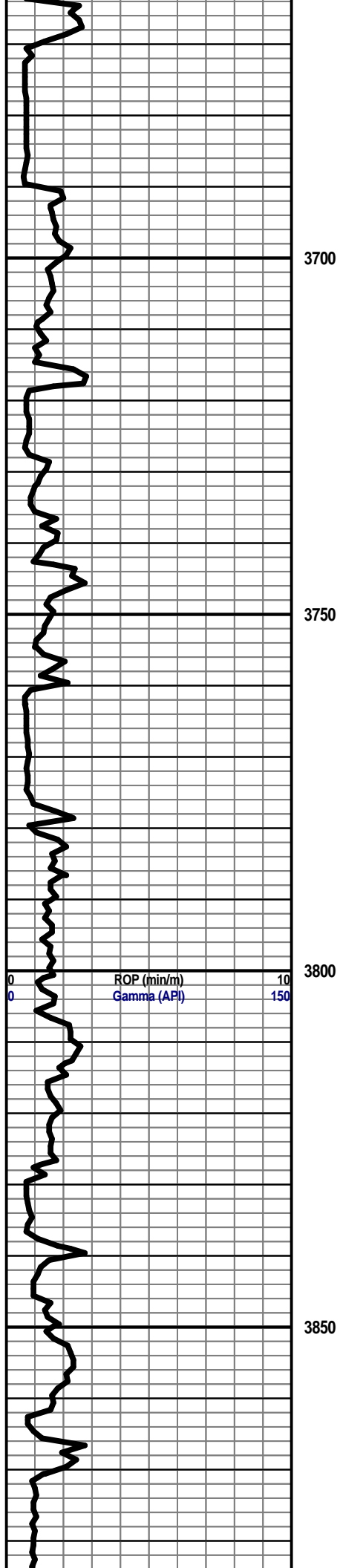


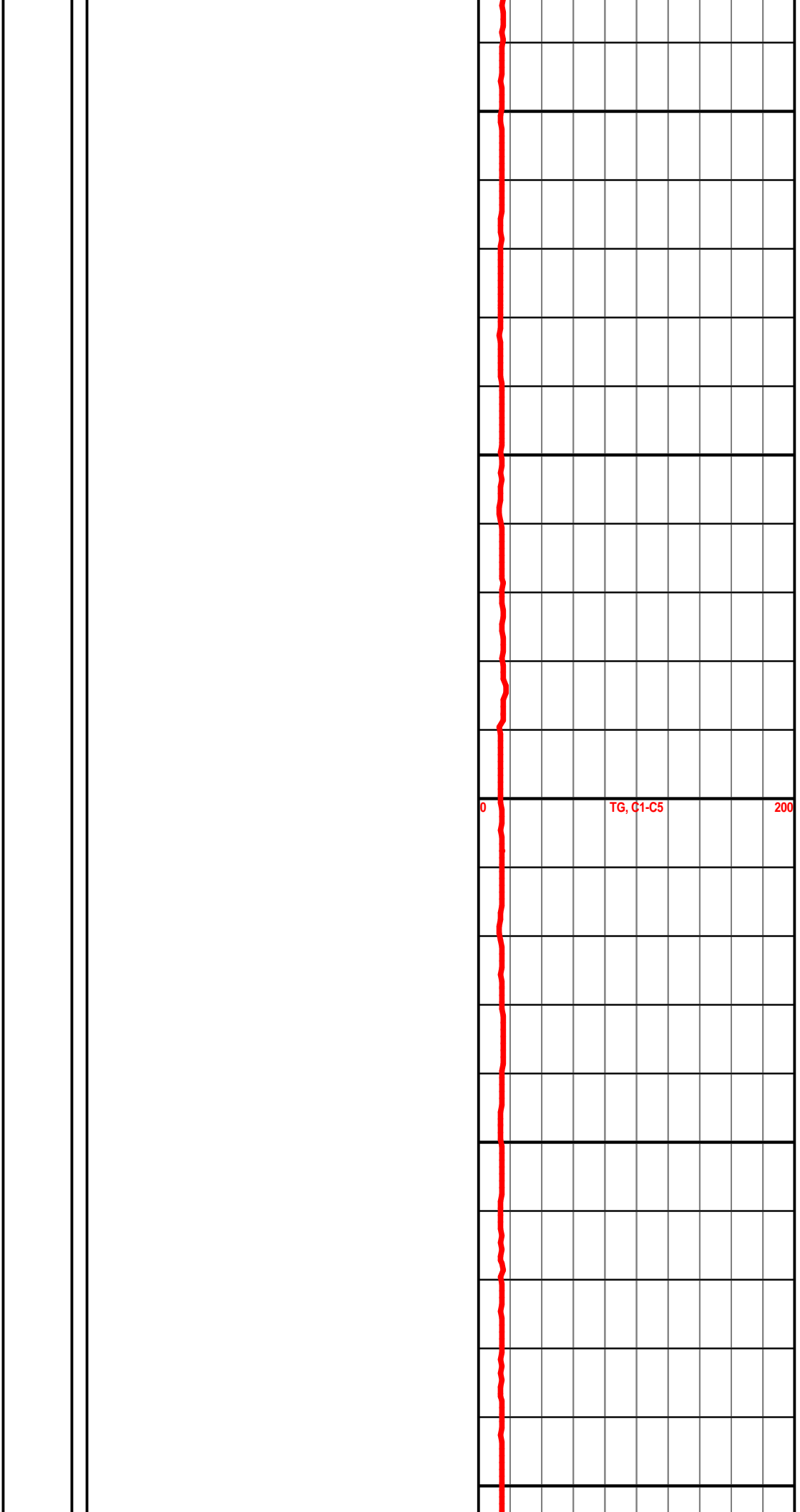
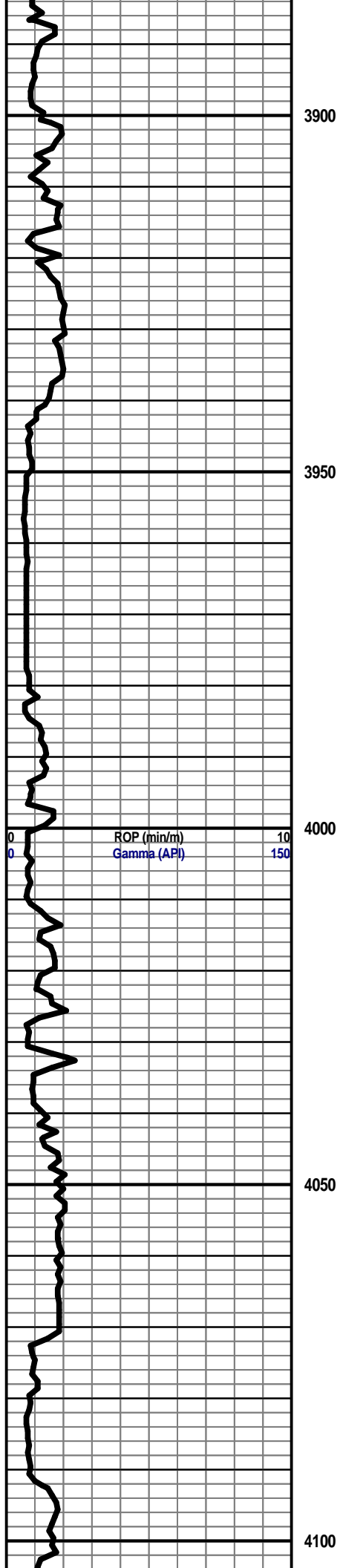


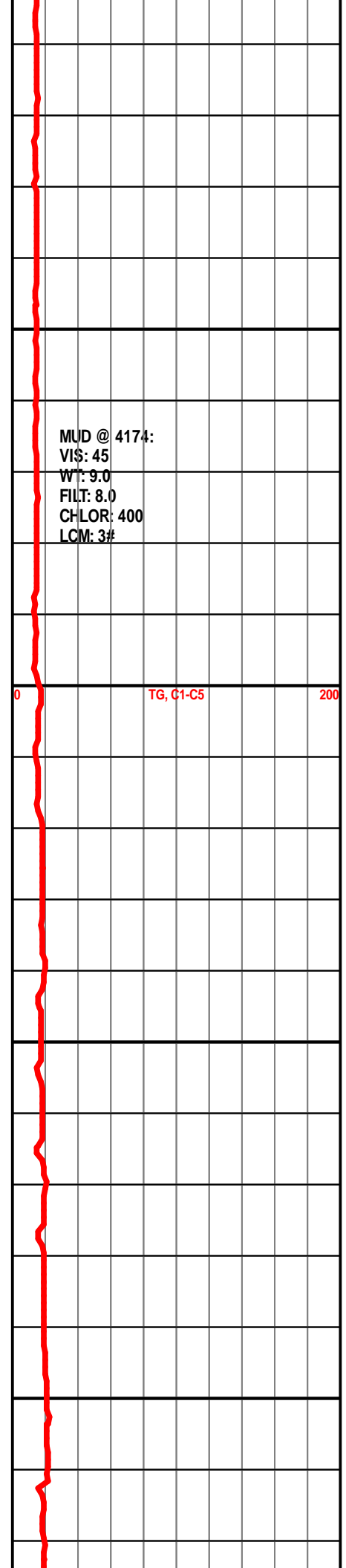
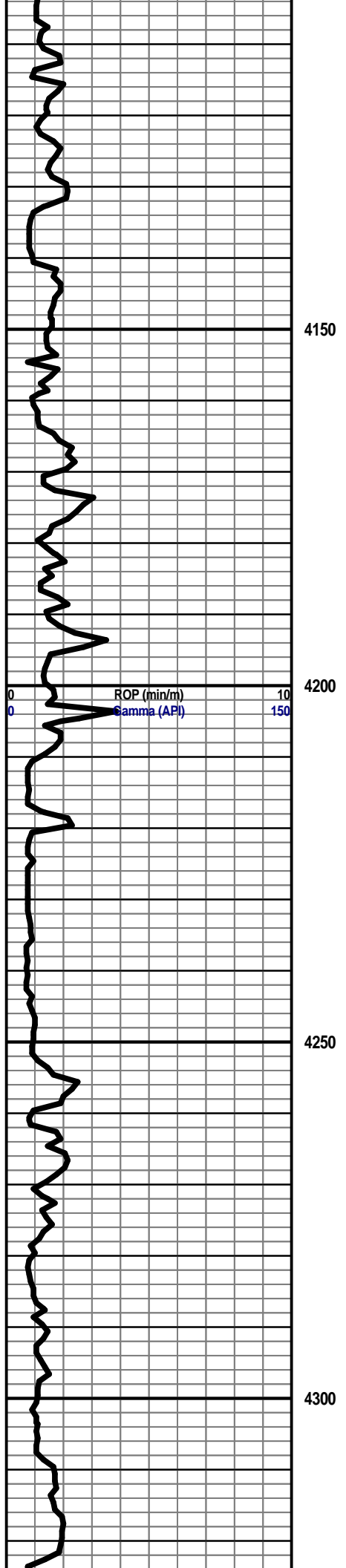


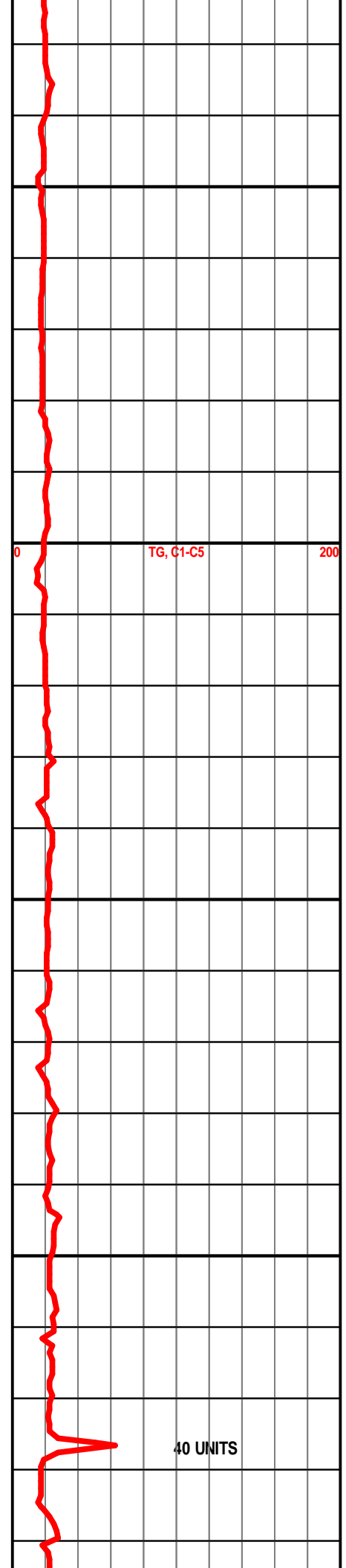
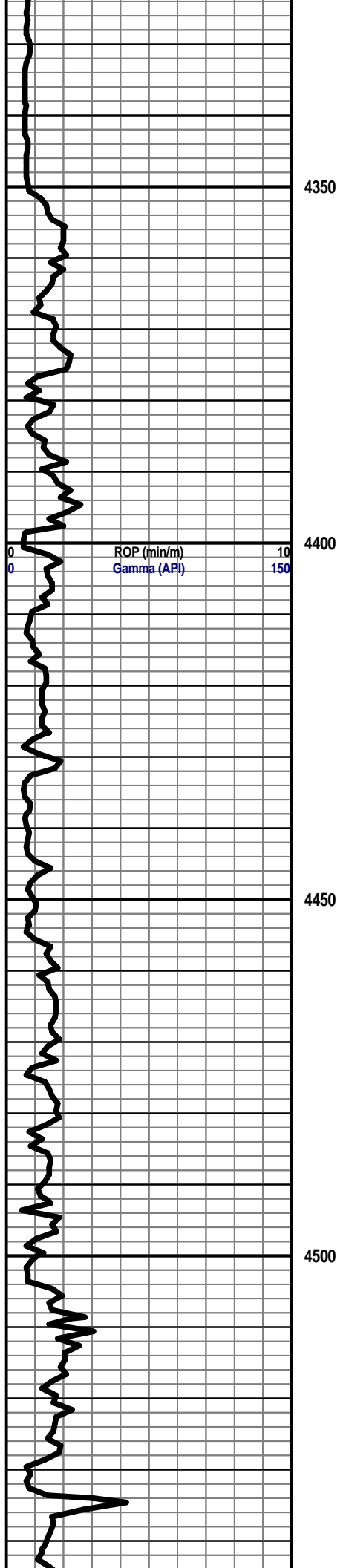
MUD @ 3533:
VIS: 39
WT: 8.8
FILT: 8.0
CHLOR: 400
LCM: 2#

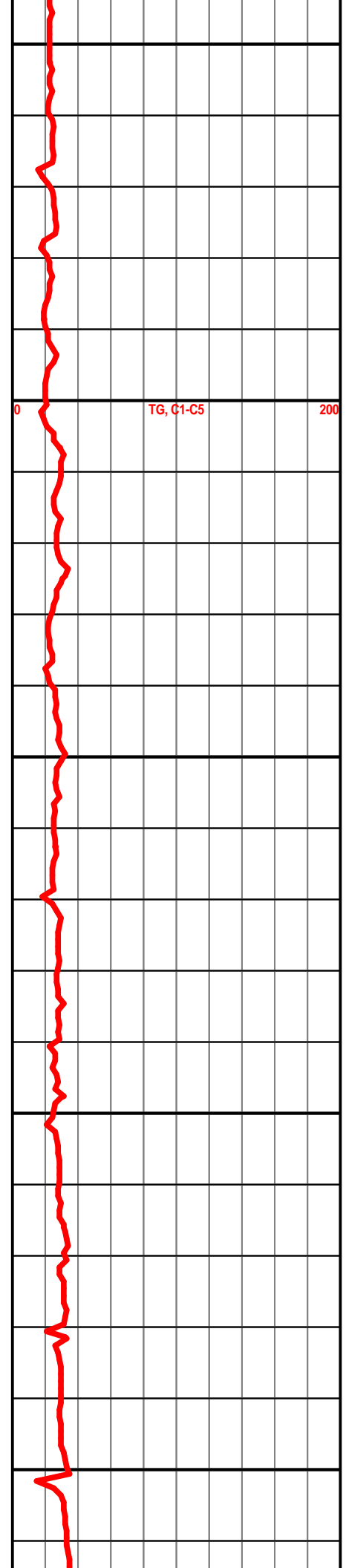
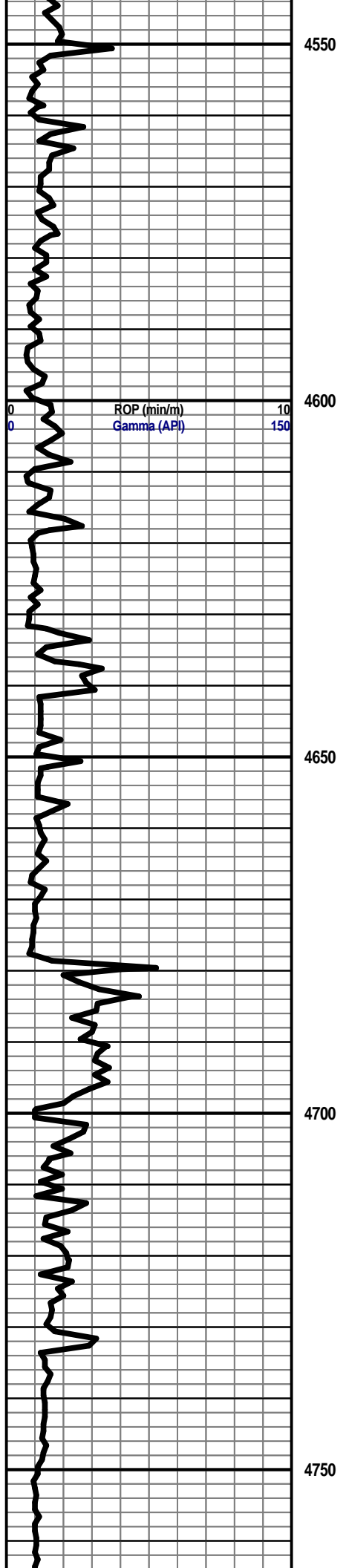
TG, C1-C5

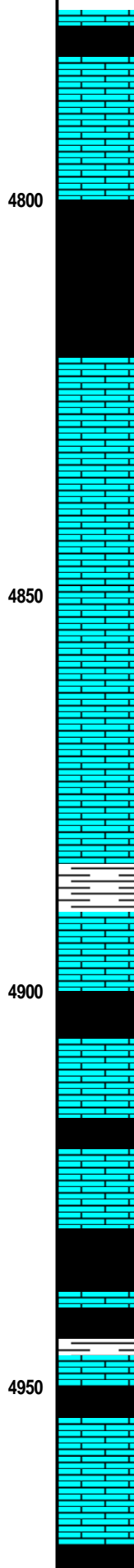
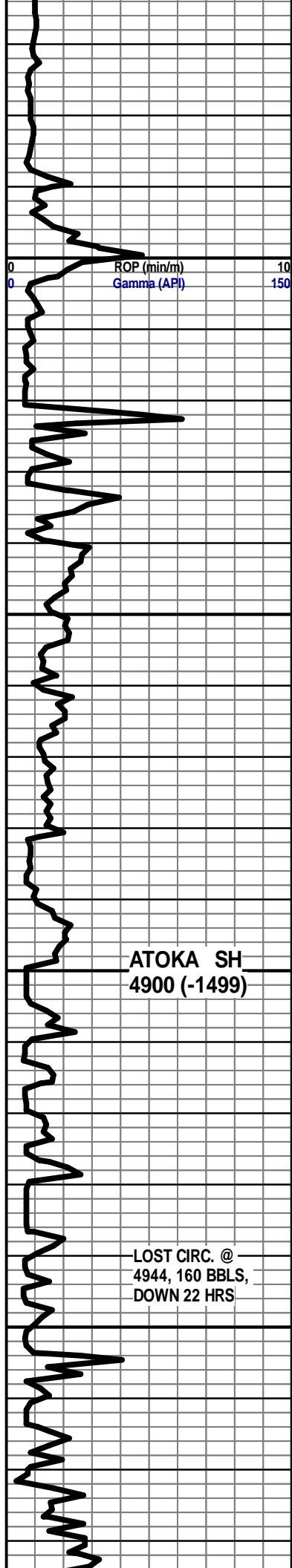












LS, BRN, VFXLN, DSE TO WEATH. SLI. CHLKY; SHALE, GRY, BRN, BLE, SOME LMY.

MOSTLY LS, GRY-BRN, FXLN, SLI. SUC, SOME SLI. SHLY, PR. POR; NS

INC. SHALE, GRY-BLK.

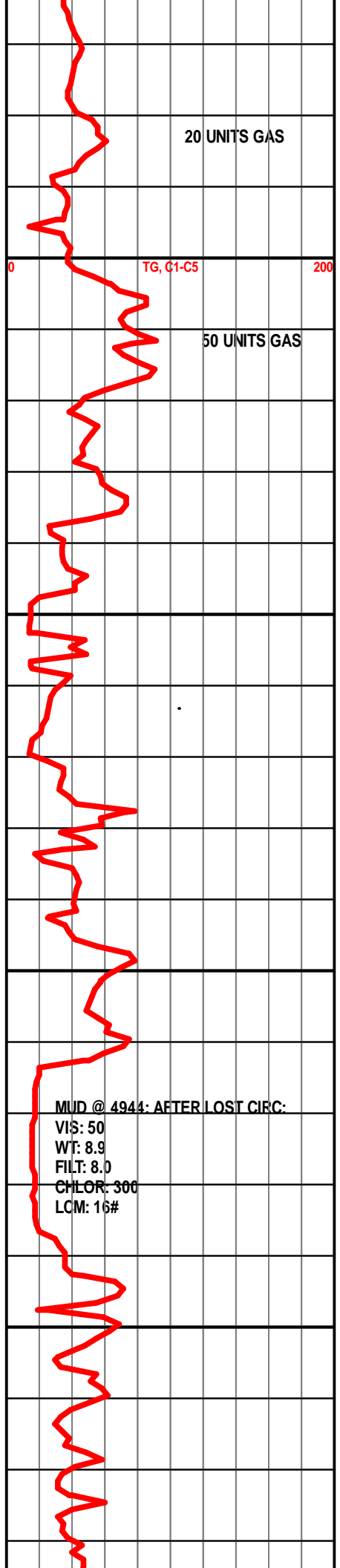
LS, GRY-BRN, FXLN, SLI. SHLY, SLI. SUC; SHALE AS ABV.

MOSTLY SHALE, GRY TO BLK, W/ FR. SHOW OF GAS BUBBS.

MOSTLY SHALE, GRY-BLK.

LS, BRN, FXLN, DULL, EARTHY, SILTY; NS

LS, AS ABV.



20 UNITS GAS

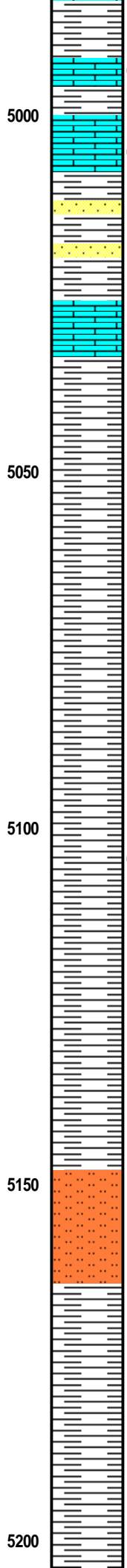
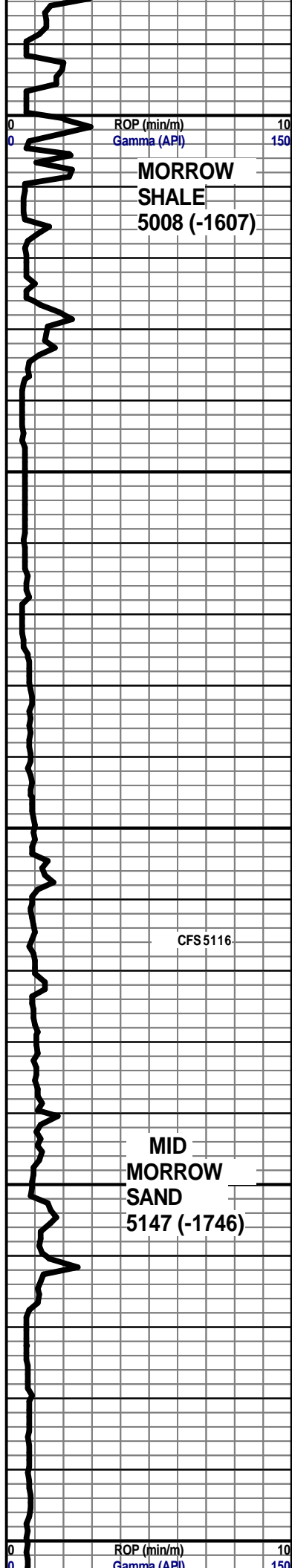
50 UNITS GAS

ATOKA SH
4900 (-1499)

LOST CIRC. @
4944, 160 BBLs,
DOWN 22 HRS

MUD @ 4944: AFTER LOST CIRC:

VIS: 50
WT: 8.9
FILT: 8.0
CHLOR: 300
LCM: 16#



SHALE, GRY-BLK; LS, GRY-BRN, SLI. SILTY, SLI. WEATH, TR. FOSS., PR0TR. FR. XLN. POR., SLI. ODOR, NO OTHER SHOW.

AS ABV; SLI. ODOR

SHALE, GRY-BRN; TR. LMY SOFT TO HARD SILIC. SST, VF GRND, FR. WELL SORT, SLI. PYRITIC; NS

SHALE, LT-DK. GRY.

SHALE, BRN-BLK, CARBONACEOUS AND PYRITE.

SHALE, GRY - BRN / BLK, SOME SLI. PYRITIC, W/ SLI. SHOW GAS BUBBLES, NO OTHER SHOW.

SHALE, MD-DK GRY TO BLK; TR. PYTITE.

FLOOD, TAN, SLI. LMY, TIGHT, SILTSTONE TO VERY RARE TR. SST, FN GRND. W/ DK SPKS (BIOTITE?), PR. VIS POR.; NSO, NO FLUOR, NO CUT.

SHALE, MD-DK GRY TO BLK; TR. PYRITE.



SHALE, MD-DK GRY, TR. BLK.

TR. LS, BRN VFXLN, SLI. WEATH. TO TR. TAN, LMY SILTSTONE, TIGHT; NS

5250

SHALE, MD-DK GRY, SOME SLI. LMY.

MOSTLY SHALE, MD-DK GRY, SLI. LMY; TR. PYRITE.

5300

LWR. MORROW MKR. 5307 (-1906)

CONG. W/ MD-CSE, CLR, ANG. QTZ GRNS & TR. SHALE & LS FRAGMENTS TIGHTLY CEM. IN LS MATRIX, PR. POR; NS, NO FLUOR, NO CUT, NO ODOR

5350

SHALE, MD-DK GRY.

LWR MORROW SAND 5364 (-1963)

SST, FN GRND, WELL SORT, ANG-SUBANG, GLAUC, IN LS MATRIX, PR-FR. POR; NS, NO FLUOR, NO CUT.

DST #1 5326-5489; TIMES 30-60-60-120 REC: 300' GIP, 300 DM, W/ SSO ON TOP. SIP: 1023-1000# SEE DETAILS ABOVE

SST, SILT.- MD GRND, FRLY WELL SORT, ANG-SUBANG, GLAUC, IN LS MATRIX, PR-FR. POR; NS

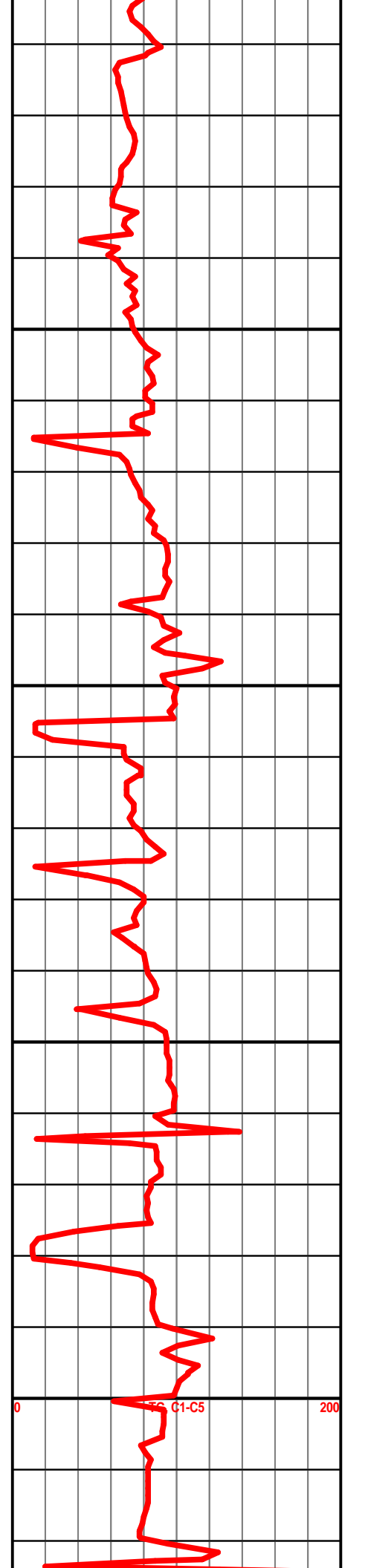
5400

ROP (ft) CFS 5401 10 Gamma (API) 150

SHALE, GRY-BLK.

UP. KEYES SAND 5404 (-1922)

SM. AMT SST, VF-MD GRND, ANG-SBANG, IN LMY MATRIX TIGHT TO TR. FR. POR. SSO (LT) SHOW GAS



5421 (-2020)

DST #2:
5395-5537
TIMES: 180-120
REC:

CFS 5456

LW. KEYES
SAND
5472 (-2071)

CFS 5483

CFS 5489

MISS.
CHESTER
5492 (-2091)

MISS.
ST. GEN.
5520 (-2119)

MISS.
"ST. LOUIS"
5577 (-2176)

ROP (min/m)
Gamma (API)

RTD 5635

LTD 5636

5450

5500

5550

5600

MATRIX, TIGHT TO TR. FR. POR, SSFO (LT), SHOW GAS, PR. SPTY TO FEW PCS W/ TOTAL LT. BRN, SAT STN, WK FLUSH TO GOOD CRUSH CUT, SLI - FR. ODOR (OVERALL LOOKS TIGHT)

SHALE, GRY-BLK; CARRYING FEW PCS. SST AS ABOVE IN SAMPLE.

MOSTLY SHALE MD-DK GRY; TR. SST AS ABV, GLAUC, TIGHT W/ LMY TO SILIC. CEM; NS

TR. SST, FN-CSE GRND, PRLY SORT, ANG-SBANG, SLI. GLAUC, SLI. CALC. CEM, TIGHT TO FR. TO TR. GD. INTER-GRN PPT & VUG. POR, VSSFO & G (LT), WK-FR. CRUSH CUT, NO STN, SLI. ODOR ON BRK

MOSTLY SHALE, LT-DK GRY, TR. BLK; TR. PYRITE; 1 PC. SST AS ABV. (MUCH SHALE SLUFF IN SAMP.)

MOSTLY MD-DK GRY SHALE & REDBEDS

TR. LS, CRM-BRN, FXLN, ARENACEOUS W/ SILT - VFN GRN QTZ. GRNS, PR-FR XLN POR; NS

LS CRM-GRY, FXLN, AREN, WEATH. SLI. CHLKY TO TR. SLI. OOLITIC, PR-FR. XLN POR; NS

LS, CRM, FXLN, SLI CHLKY, SOFT, AREN. & MICRO-OOLITIC, PR-FR. XLN POR; NS

LS, AS ABV; NS

LS, AREN. & OOLITIC AS ABOVE, PR-FR. XLN POR; NS

LS, CRM, FXLN, SLI. CHLKY, AREN. W/ SILT TO FN GRN QTZ GRNS & MICRO-OOLITES, PR-FR. XLN POR; NS

TR. LS, GRY-BRN, FXLN, ONLY SLI. AREN., SOFT, PR. XLN POR; AND LS AS ABV; NS

LS, TAN, FXLN, FRAGMENTAL, W/ CSE OOLITES TO LS FRAGS, FR. XLN POR; NS, NO FLUOR.

LS, CRM-TAN, FXLN, AREN. & MICRO-OOLITIC W/ PR-FR. XLN POR; NS

LS, AS ABV, & TR. CSE OOLITES; NS

LS, CRM, V. AREN/ OOLITIC W/ PR-FR. XLN POR; TR. DK BRN, V. OOL. LS W/ PR. POR; TR. CSE, RDED, QTZ GRNS; NS

LS, CRM, FXLN, OOLITIC, W/ MD - TR. CSE OOLITES, SOFT W/FR. XLN POR; NS, NO FLUOR.

146 UNITS GAS

PIPE STRAP
@ 5489:
.38' SHORT
TO BOARD

MUD @ 5483:
VIS: 49
WT: 9.0
FILT: 8.0
CHLOR: 300
LCM: 16#

45 UNITS GAS

LOST CIR. WHILE GOING
IN AFTER DST (250 BBLs)

DETECTOR NOT WORKING HERE

MUD AFTER DST
@ 5489:
VIS: 50
WT: 9.2
FILT: 4.8
CHLOR: 500
LCM: 10#

DETECTOR NOT WORKING HERE

GAS INCREASE

TG. (CCS) 0 200

