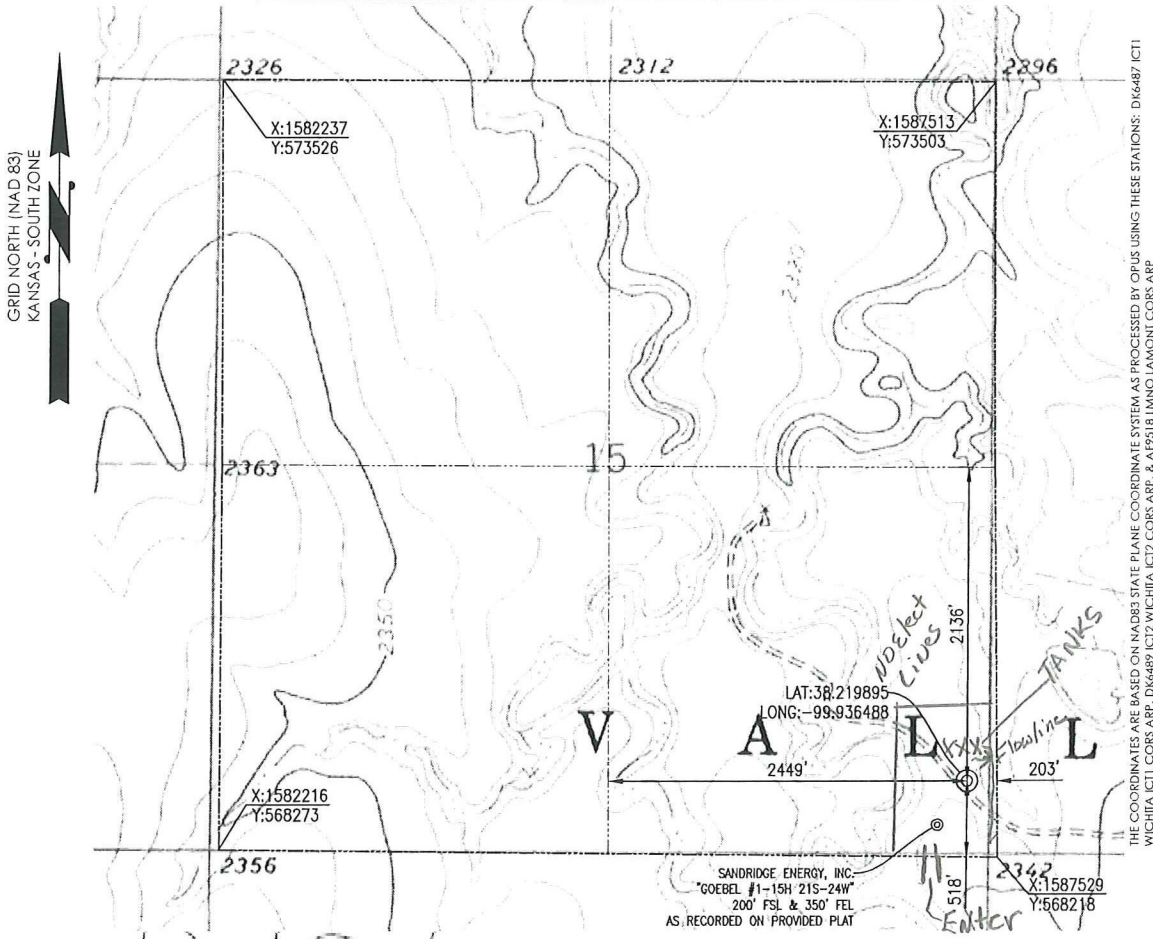


HODGEMAN COUNTY, KANSAS

518' FSL- 203' FEL SECTION 15 TOWNSHIP 21S RANGE 24W 6TH P.M.



THE COORDINATES ARE BASED ON NAD83 STATE PLANE COORDINATE SYSTEM AS PROCESSED BY OPUS USING THESE STATIONS: DK6487 ICT1 WICHITA ICT1 CORS ARP, DK6489 ICT2 WICHITA ICT2 CORS ARP, & AP918 LIMNO LAMONT CORS ARP

OPERATOR: SANDRIDGE ENERGY, INC.

WELL NO: 1-15

ELEVATION:
 2338' GR. AT STAKE

LEASE NAME: CARISSA SWD

TOPOGRAPHIC & VEGETATION: LOCATION FEL IN A FIELD

GOOD DRILL SITE: YES

REFERENCE STAKES OR ALTERNATE LOCATION
 STAKES SET: NONE

BEST ACCESSIBILITY TO LOCATION: SOUTH OR EAST LINE

DISTANCE & DIRECTION
 FROM HWY JCT OR TOWN: FROM THE JCT. OF US-283 & KS-156 (JETMORE, KS), TRAVEL NORTH ON US-283 FOR ±9.1 MILES, TURN LEFT (WEST) ON UNNAMED RD & TRAVEL ±1.0 MILE, TURN LEFT (SOUTH) ON UNNAMED RD & TRAVEL ±0.5 MILE, TURN RIGHT (WEST) ON UNNAMED RD & TRAVEL ±1.1 MILES (NORTHWEST) ON DIRT ROAD TO THE SE CORNER S15, T21S-R14W.

(THE FOLLOWING INFORMATION WAS GATHERED USING A GPS RECEIVER ACCURACY ±2.3 METERS)

GPS DATUM: <u>NAD-27</u>	STATE PLANE COORDINATES: <u>ZONE: KS-SOUTH</u>
LAT: <u>38.219895</u>	X: <u>1587322.163</u>
LONG: <u>-99.936488</u>	Y: <u>568738.062</u>

SURVEYOR'S CERTIFICATE:

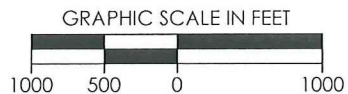
DATE STAKED: 02-21-2012

I, C. ED GRAY, KANSAS LICENSED PROFESSIONAL LAND SURVEYOR, NO. 1404, DO HEREBY CERTIFY THAT THIS PLAT REPRESENTS THE RESULTS OF A SURVEY MADE ON THE GROUND UNDER MY SUPERVISION.

GENERAL NOTES:

THE TIES AND FOOTAGES SHOWN ON THIS PLAT ARE FROM LINES OF OCCUPATION FROM A SURVEY MADE ON THE GROUND AND / OR BEARING AND DISTANCES FROM THE GENERAL LAND OFFICE PLAT OF THE AREA SHOWN AND MAY NOT BE THE ACTUAL PROPERTY CORNERS. THIS PLAT DOES NOT REPRESENT A TRUE BOUNDARY SURVEY.

DISTANCES SHOWN IN (PARENTHESES) ARE CALCULATED BASED UPON THE QUARTER SECTION BEING 2640 FEET, THOSE SHOWN IN [BRACKETS] ARE BASED ON GLO (GENERAL LAND OFFICE) DISTANCES AND HAVE NOT BEEN MEASURED.



REVISION		SandRidge	
△	REVISED SHL (02-20-2012)	"CARISSA SWD 1-15" PART OF THE SE1/4 OF SECTION 15, T-21-S, R-24-W PROPOSED DRILL SITE HODGEMAN COUNTY, KANSAS	
△	REVISED CL. LMTS (02-21-12)		
		SCALE: 1" = 1000'	DRAWN BY: S. ANDER
		PLOT DATE: 02-21-2012	SHEET NO.: 1 OF 3